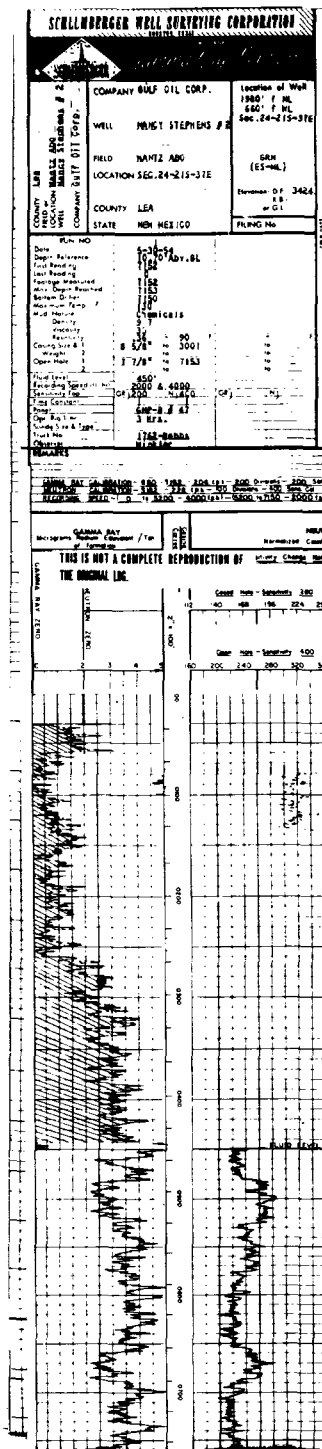


Reported By:
West Texas Electrical Log Service
1305 Commerce Street
Dallas 1, Texas

REFERENCE No A 3081 -A



ATLANTIC RICHFIELD COMPANY
Blinebry Unit Well No. 66 UT
Drinkard Unit Well No. 66 LT
(Gulf - Nancy Stephens No. 2)
Lea County, New Mexico

EXHIBIT NO. 37