



STATE OF NEW MEXICO
ENERGY, MINERALS AND NATURAL RESOURCES DEPARTMENT
OIL CONSERVATION DIVISION

GARREY CARRUTHERS
GOVERNOR

September 27, 1990

POST OFFICE BOX 2088
STATE LAND OFFICE BUILDING
SANTA FE, NEW MEXICO 87504
(505) 827-5800

Kerr-McGee Corporation
110 N. Marienfeld, Suite 200
Midland, TX 79701

Attention: Kelly Jamerson

RE: Injection Pressure Increase
Bilbrey "51" Well No. 1
Lea County, New Mexico

Dear Ms. Jamerson:

Reference is made to your request dated January 11, 1990, to increase the surface injection pressure on the Bilbrey "51" Well No. 1. This request is based on a step rate test conducted on the well on January 3, 1990. The results of the test have been reviewed by my staff and we feel an increase in injection pressure on the well is justified at this time.

You are therefore authorized to increase the surface injection pressure on the following well.

WELL AND LOCATION

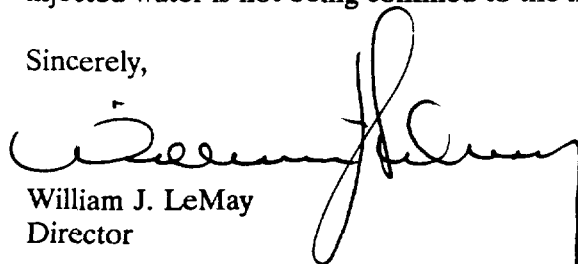
MAXIMUM INJECTION
SURFACE PRESSURE

Bilbrey "51" Well No. 1
Unit A, Section 23, T-9 South,
R-37 East, NMPM, Lea County, New Mexico.

1475 PSIG

The Division Director may rescind this injection pressure increase if it becomes apparent that the injected water is not being confined to the injection zone or is endangering any fresh water aquifers.

Sincerely,



William J. LeMay
Director

cc: Oil Conservation Division - Hobbs
✓File: Case No. 6034
R. Brown
D. Catanach

Memo

From

BONNIE PRICHARD
District I - UIC Coordinator

9/5/90

To David

Kerr Mc Gee called &
have not had a
response on this
request - Please check
& advise as soon as
possible (They have
B H I scheduled shortly.)



OIL CONSERVATION DIVISION
AL 1750
1990 SEP 6 AM 8 36
STATE OF NEW MEXICO
ENERGY AND MINERALS DEPARTMENT
OIL CONSERVATION DIVISION
HOBBS DISTRICT OFFICE

January 22, 1990

GARREY CARRUTHERS
GOVERNOR

POST OFFICE BOX 1980
HOBBS, NEW MEXICO 88240
(505) 393-6161

OIL CONSERVATION DIVISION
P.O. BOX 2088
SANTA FE, NEW MEXICO 87504-2088

RE: APPLICATION FOR PRESSURE LIMIT INCREASE FOR DISPOSAL & INJECTION WELLS

Gentlemen:

I have examined the step rate test for the:

KerrMcGee Corporation	Bilbrey 51 #1-A	23-9-37
Operator	Lease & Well No.	Unit
		S-T-R

and my recommendations are as follows:

OK

Very truly yours

Jerry Sexton
Supervisor, District I

/bp



KERR-McGEE CORPORATION

110 N. MARIENFELD, SUITE 200 • MIDLAND, TEXAS 79701

January 11, 1990

PHONE

915 688-7000

State of New Mexico
Energy and Minerals Department
Oil Conservation Division
Hobbs District Office
P. O. Box 1980
Hobbs, New Mexico 88241-1980

Attn: Jerry Sexton

RE: Bilbrey 51 No. 1 (SWD)
Sec. 23, T9S, R37E
Lea County, New Mexico

Gentlemen:

The approved pressure limit on subject well as per Division Order No. R-5539 is 1138 psig. The current injection pressure is 1500 psig.

A step-rate test was run 01-03-90. This test showed a surface fracture pressure of 1525 psig occurring at a rate of 0.78 BPM. Attached is a copy of the graph reflecting the step-rate test.

Based on the results of the step-rate test, it is respectfully requested that the approved pressure limit be increased from 1138 psig to 1525 psig.

Yours very truly,

Kelly Jamerson
District Superintendent

KDJ/sb
attachment

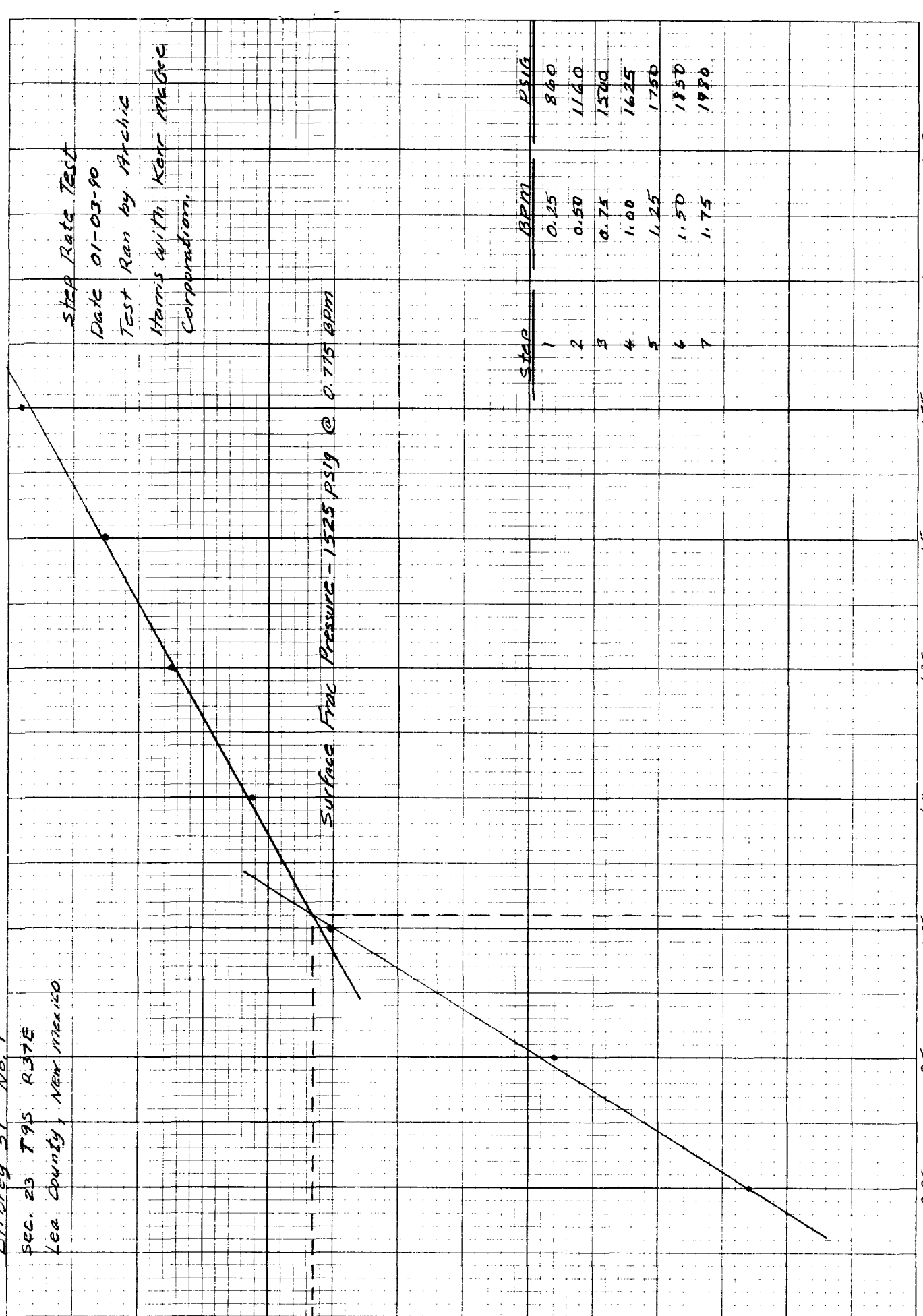
Bilberry 51 No. 1
Sec. 23 T9S R37E
Lea County, New Mexico

Step Rate Test
Date 01-03-90
Test Ran by Archie

Harris with Kent McGee
Corporation.

Surface Frac Pressure - 1525 PSIG @ 0.775 BPM

Step	BPM	PSIG
1	0.25	860
2	0.50	1160
3	0.75	1500
4	1.00	1625
5	1.25	1750
6	1.50	1850
7	1.75	1980



Injection Rate (BPM)