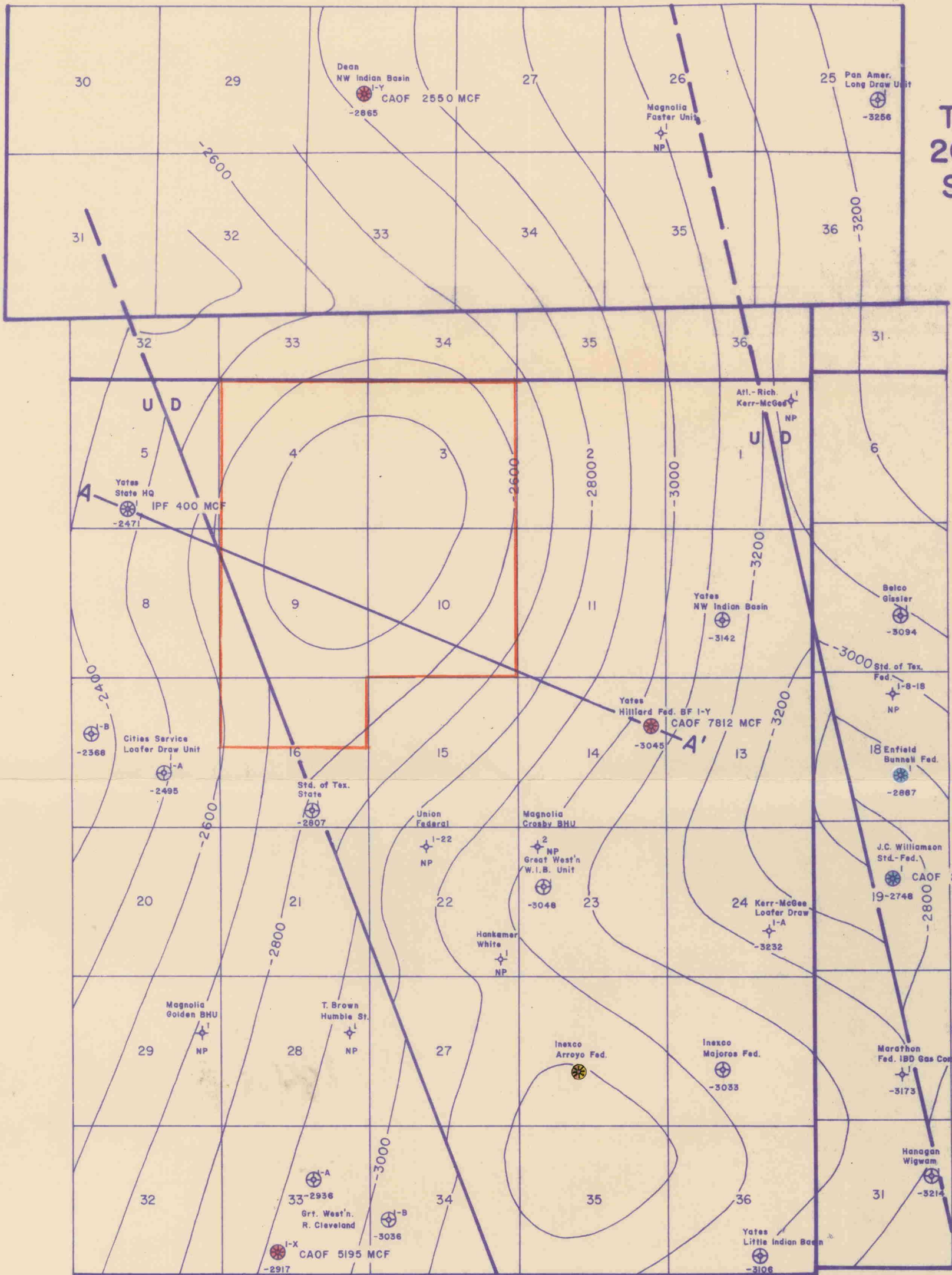


R 23 E



LEGEND

- Location
- ⊕ Plugged and Abandoned Well
- ☼ Canyon Gas Well
- ☼ Strawn Gas Well
- ☼ Atoka Gas Well
- ☼ Morrow Gas Well
- ⊕ Well Drilled to Morrow or Deeper
- NP ← No Penetration

100' Structure Contours
on Lower Canyon Marker

Fault

Inferred Fault



R 22 E

R 23 E

YATES PETROLEUM CORP.
STINKING DRAW UNIT
EDDY COUNTY, NEW MEXICO

EXHIBIT No. 3