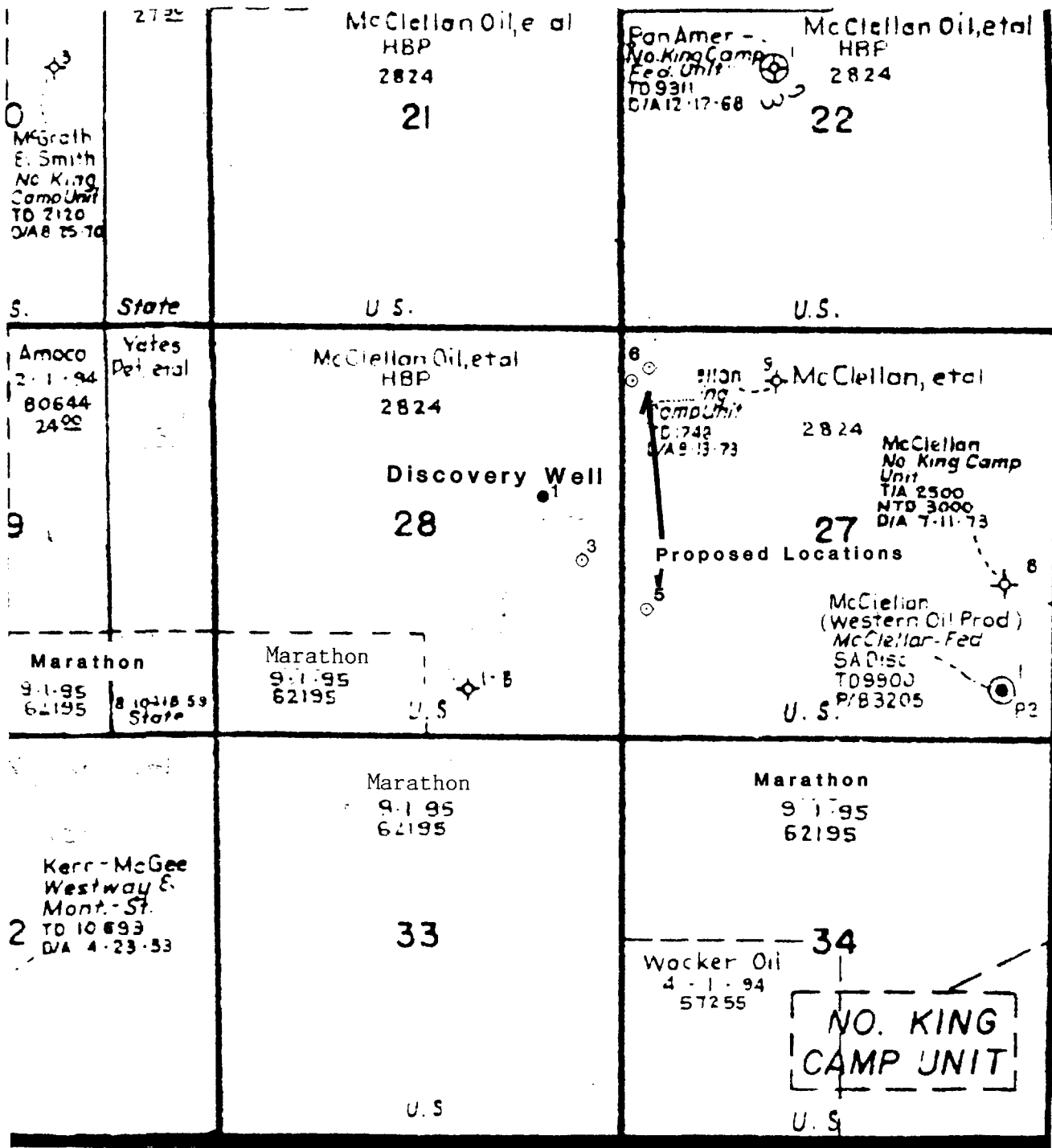


T13S, R29E



STEVENS OPERATING CORPORATION

Proposed Location, McClellan #5, #6

Land Map

STEVENS OPERATING CORPORATION  
OIL CONSERVATION DIVISION  
Stevens Exhibit No. 1  
CASINO 10387, 10388

Jack Ahlen July 1991

Exhibits 1 through 5  
Complete Set

R29E

21

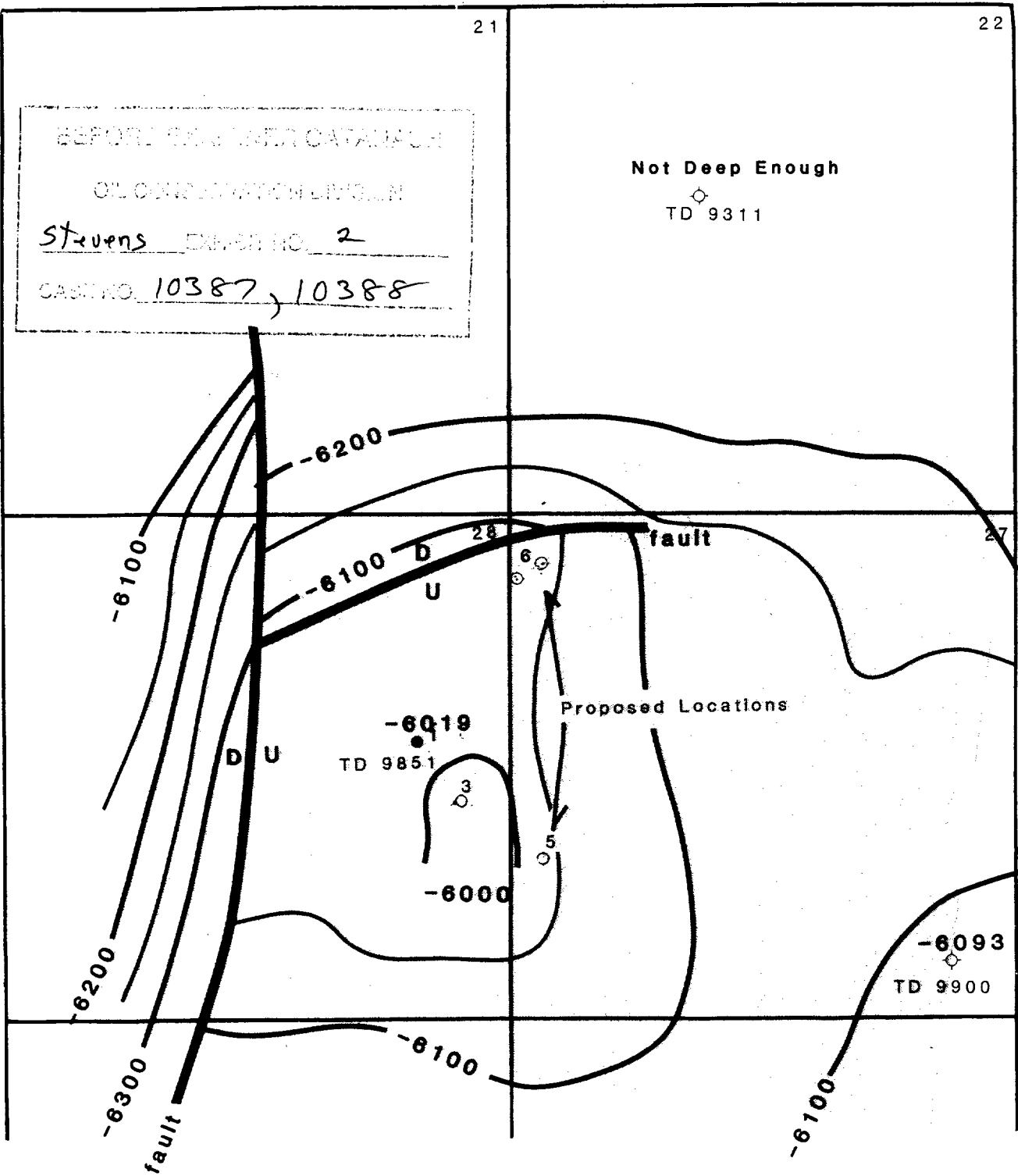
22

BEFORE OIL & WATER CATASTROPHES  
 OIL CONCENTRATION LINES IN  
 Stevens EXPLORATION NO. 2  
 CASE NO. 10387, 10388

Not Deep Enough

TD 9311

T13S



# STRUCTURE, TOP DEVONIAN

3D Seismic Control

C. I. = 50'

Scale   2000'

Jack Ahlen Aug 1991

Schlumberger

NEUTRON/ CCL LOG

COMPANY: STEVENS OPERATING CORP.

WELL: McCLELLAN FEDERAL #1

FIELD: WILDCAT

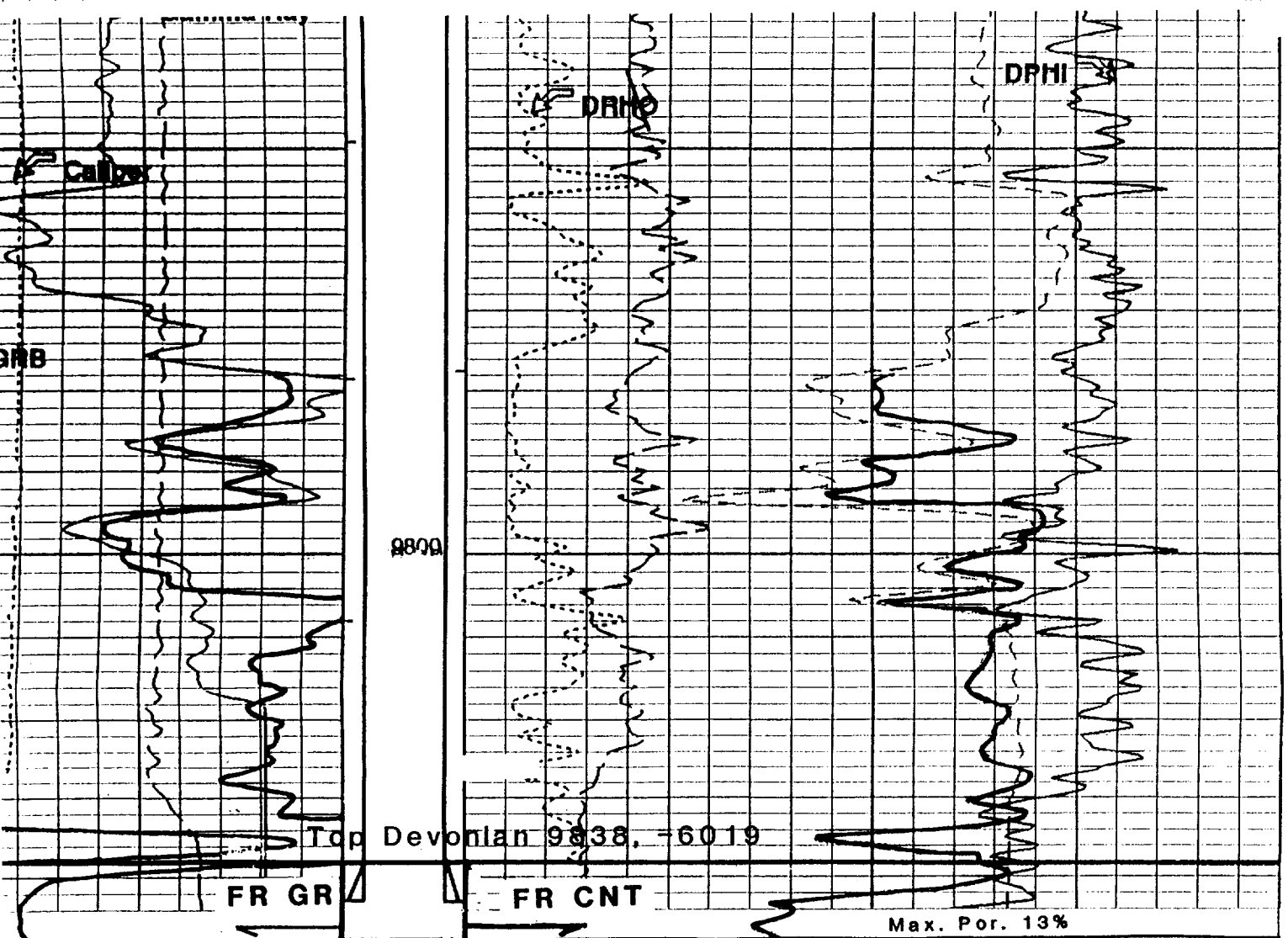
COUNTY: CHAVES STATE: NEW MEXICO

COUNTY: CHAVES  
Field: WILDCAT  
Location: 2190' FNL & 990' FEL  
Well: Mc CLELLAN FED. #1  
Company: STEVENS OPERATING

COMPENSATED NEUTRON  
LITHO-DENSITY  
GAMMA RAY

LOCATION		GROUND LEVEL	
2190' FNL & 990' FEL		Elev.: K.B. 3819 F	
		G.L. 3801 F	
		D.F. 3818 F	
Permanent Datum:	GROUND LEVEL	Elev.: 3801 F	
Log Measured From: KB		18.0 F above Perm. Datum	
Drilling Measured From: KB			
API Serial No. 30-005-62834	SECTION 28	TOWNSHIP 13-S	RANGE 29-E
Logging Date 4-10-91			
Run Number 1			

Depth Driller	9851 F		
Schlumberger Depth	9830 F		
Bottom Log Interval	9828 F		
Top Log Interval	100 F		
Casing Driller Size @ Depth	8.625 IN @ 2300 F		
Casing Schlumberger	2300 F		
Bit Size	7.875 IN		
Type Fluid In Hole	BRINE/GEU/STARCH/OIL		
Density	9.6 LB/G	55 S	
Fluid Loss	9 C3	9.2	
Source Of Sample	PTT		
FM @ Measured Temperature	0.086 OHMM @ 78 DEGF		
FMF @ Measured Temperature	0.070 OHMM @ 78 DEGF		
FMC @ Measured Temperature			
Source FMI	FMC		
FM @ BHT	MEAS		
FMF @ BHT	0.052 @ 138	0.041 @ 136	
Maximum Recorded BHT			
Circulation Stopped	Time 4-10-91	12:30	



TD 9848

GR and CNT traced from cased hole log

IF Swb at the rate of 561 BOPD

Tension (TENS) (LBF)	0.0	0.0	
GRB (GR) (GAPI)	200.0	0.3	NPHI (NPHI) (V/V) -0.1
Gamma Ray (GR) (GAPI)	103.87	103.88	DPHI (DPHI) (V/V) -0.1

BEFORE EXAMINATION

CONSERVATION DIVISION

EXHIBIT NO. 3



McClellan Oil Corporation

September 18, 1991

Oil Conservation Division  
New Mexico Oil Department of Energy,  
Minerals and Natural Resources  
State Land Office Building  
Santa Fe, New Mexico 87503

Re: Case # 10388  
Unorthodox Location  
Lone Wolf, South Devonian  
Township 13 South, Range 29 East

Gentlemen:

McClellan Oil Corporation, an overriding royalty and lease owner and offsetting operator in Section 22 (and offsetting operator in Sections 21 and 28 subject to a farmout agreement with Stevens Oil Company) in the immediate area of the Stevens Operating Corporation #6 McClellan well, hereby supports the proposed Application of Stevens Operating Corporation for the unorthodox location under the 660' lease setback rules of Order No. R-9514. The unorthodox location is necessary to secure maximum structural position without impairing correlative rights.

McClellan Oil Corporation supports Stevens Oil Company's request for a preferred location of 660 feet from the north line and 100 feet from the west line of Section 27. However, we understand there are some archeological concerns with regard to this location. Therefore, we also support the request for an alternative location (in the event archeological concerns cannot be resolved with regard to the preferred location) of 500 feet from the north line and 330 feet from the west line

Additionally, McClellan Oil Corporation, as offset operator, agrees to waive notice of this hearing.

Your granting of the application as presented without reduction in allowable will work to the best interest of all concerned in the development of this newly discovered pool.

Very Truly Yours,  
McCLELLAN OIL CORPORATION

*Mark McClellan*

Mark McClellan, Vice President

SEARCHED	INDEXED
SERIALIZED	FILED
OIL CONSERVATION DIVISION	
Stevens	
EXHIBIT NO.	4
CASE NO. 10387, 10388	



McClellan Oil Corporation

September 18, 1991

Oil Conservation Division  
New Mexico Oil Department of Energy,  
Minerals and Natural Resources  
State Land Office Building  
Santa Fe, New Mexico 87503

Re: Case # 10387  
Unorthodox Location  
Lone Wolf, South Devonian  
Township 13 South, Range 29 East

Gentlemen:

McClellan Oil Corporation, an overriding royalty and lease owner (and offsetting operator of Section 28 lands subject to a farmout agreement with Stevens Oil Company) in the immediate area of the Stevens Operating Corporation #5 McClellan well, hereby supports the proposed Application of Stevens Operating Corporation for the unorthodox location under the 660' lease setback rules of Order No. R-9514. The unorthodox location is necessary to secure maximum structural position without impairing correlative rights.

McClellan Oil Corporation supports a location of 1700 feet from the South line and 280 feet or more from the west line of Section 27. We understand that there are potential archeological concerns in regard to the original location that have necessitated the movement of the location from the originally proposed location.

Additionally, McClellan Oil Corporation, as offset operator, agrees to waive required notice of this hearing.

Your granting of the application as presented without reduction in allowable will work to the best interest of all concerned in the development of this newly discovered pool.

Very Truly yours,  
McCLELLAN OIL CORPORATION

*Mark McClellan*

Mark McClellan, Vice president

BEFORE ENGINEER DANANACH  
OIL CONSERVATION DIVISION  
Stevens OPERATING #5  
10387, 10388