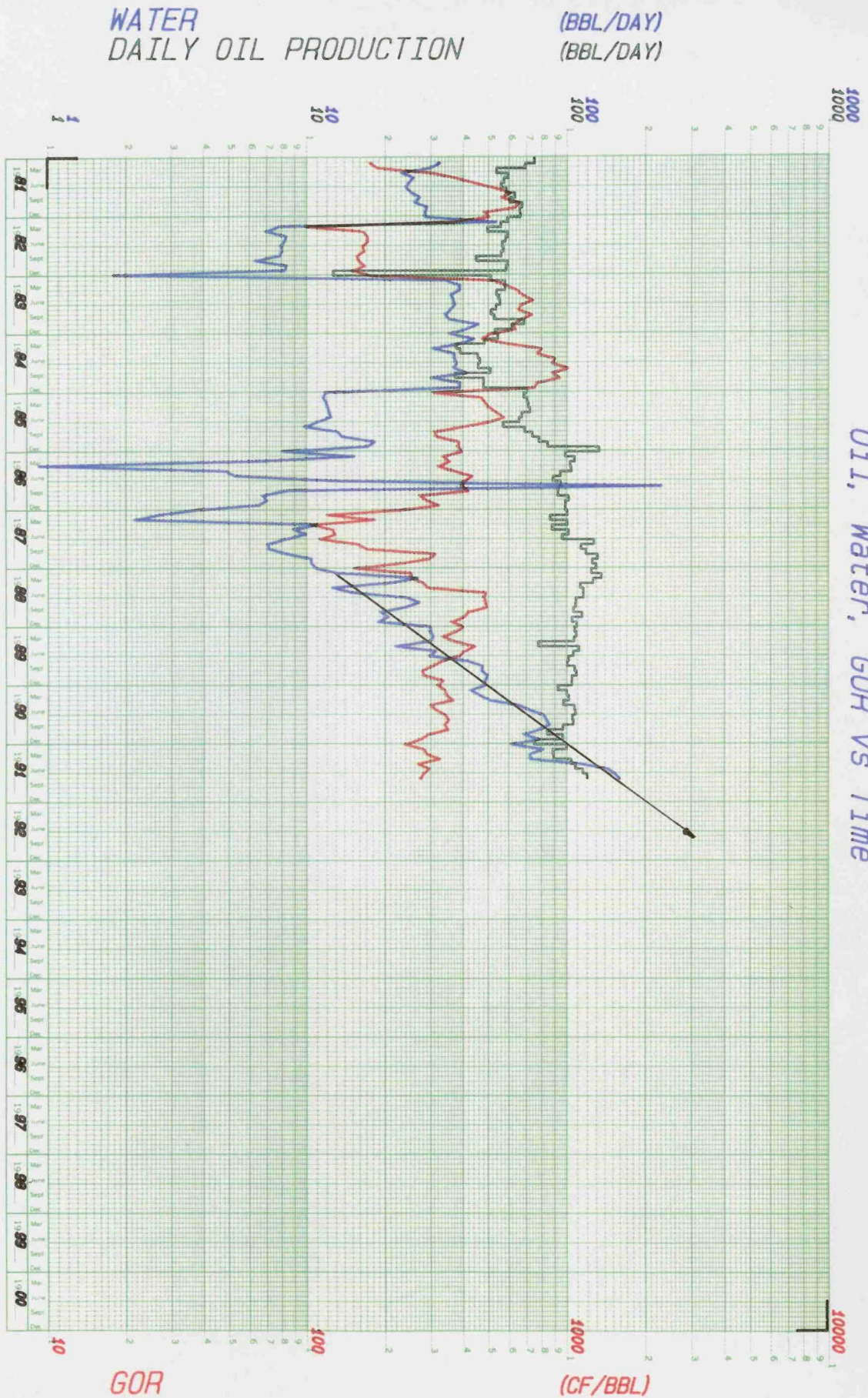


# Oil, Water, GOR vs Time



BEFORE THE  
OIL CONSERVATION DIVISION  
Santa Fe, New Mexico

Case No. 10462 Exhibit No. 111

Submitted by Mobil

Date 4-2-92

Mobil Exploration & Producing U.S.  
Midland South Team

Field: VACUM  
 Lease: NEW MEXICO K STATE  
 Operator: EXXON CORPORATION  
 County: LEA

#027

State: NM

Current Date: 03-27-92

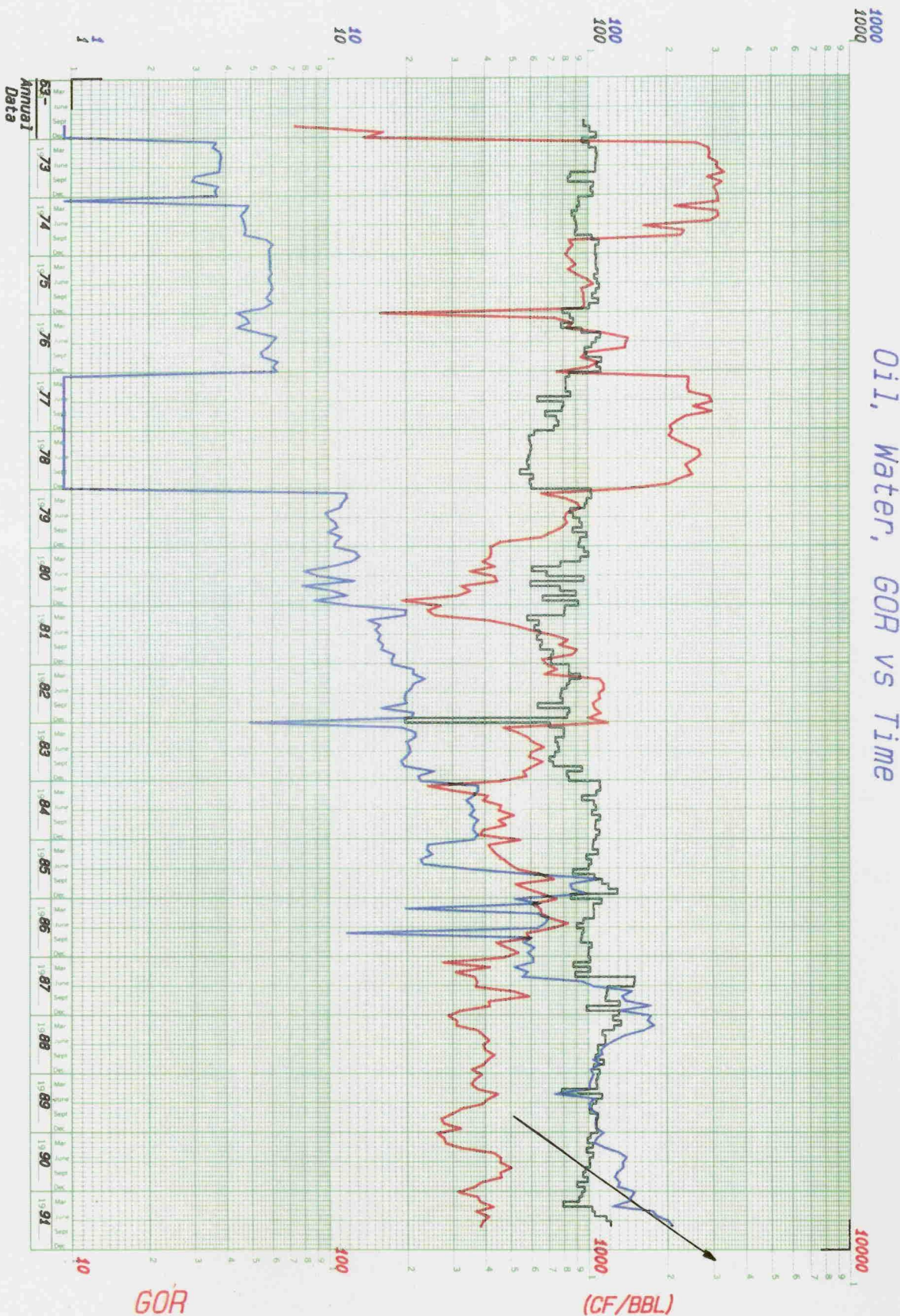
Code: 17339528MGL



# Oil, Water, GOR vs Time

WATER  
DAILY OIL PRODUCTION

(BBL/DAY)  
(BBL/DAY)



Mobil Exploration & Producing U.S.

Midland South Team

Field: VACUM  
Lease: NEW MEXICO K STATE #29  
Operator: EXXON CORPORATION  
County: LEA

State: NM

Current Date: 03-26-92

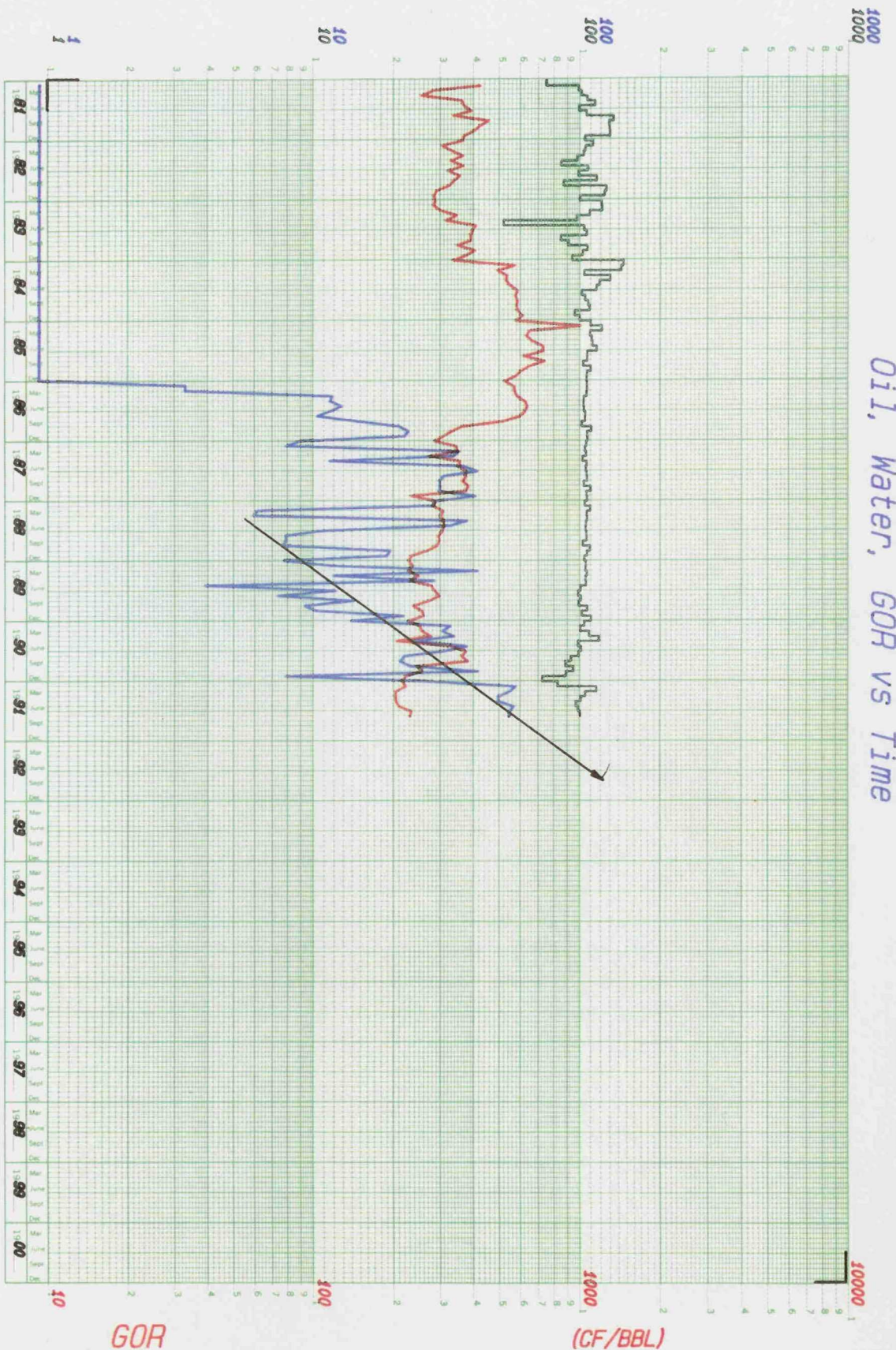
Code: 17335E28K6L



# Oil, Water, GOR vs Time

WATER  
DAILY OIL PRODUCTION

(BBL/DAY)  
(BBL/DAY)



## LEGEND

OIL  
WATER  
GOR

## Mobil Exploration & Producing U.S.

Midland South Team

Field: VACUM  
Lease: SKELLY P STATE  
Operator: TEXACO  
County: LEA

State: NM

WELL 003

Current Date: 03-27-92

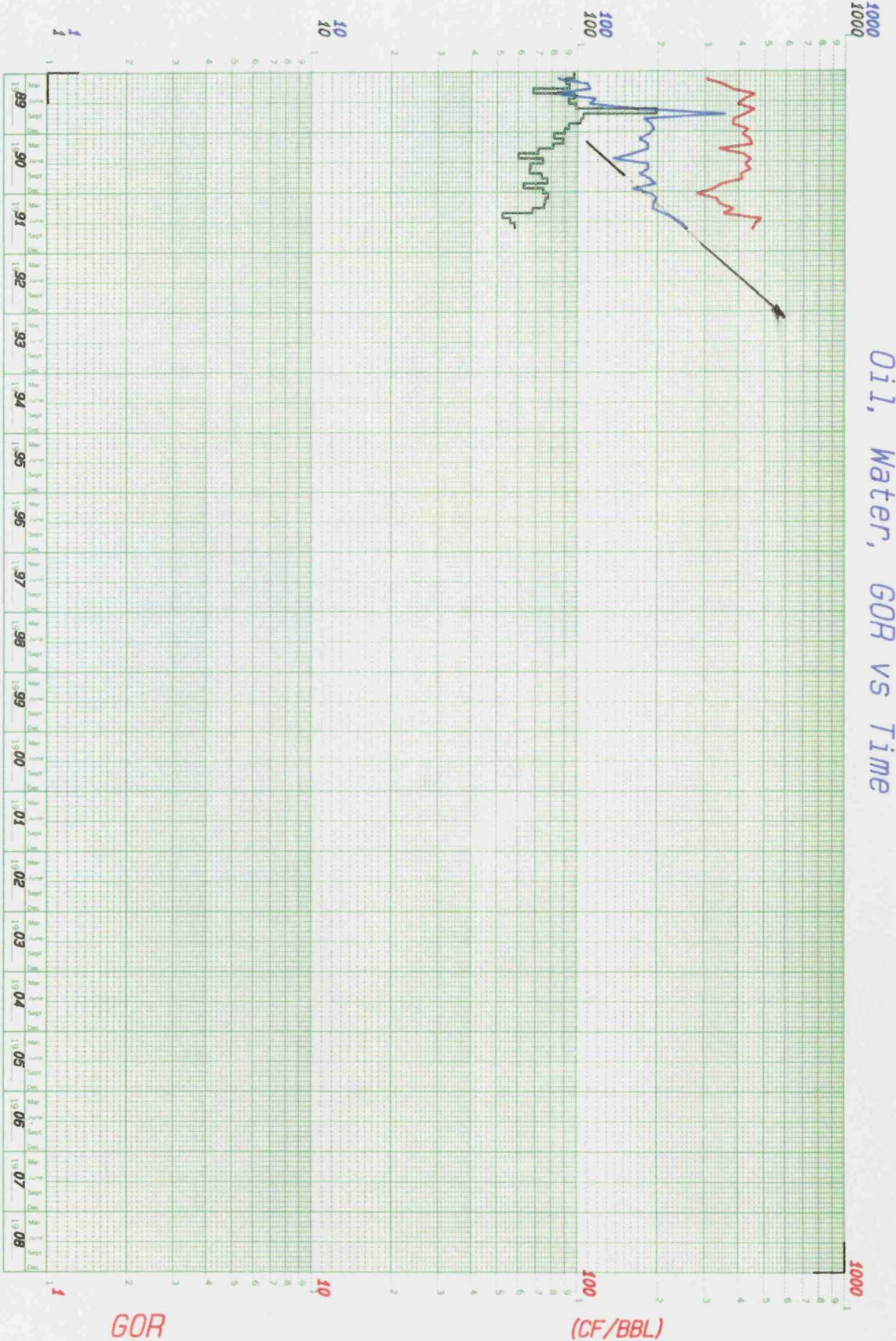
Code: 17396E33CBL



# WATER DAILY OIL PRODUCTION

(BBL/DAY)  
(BBL/DAY)

Oil, Water, GOR vs Time



## LEGEND

OIL  
WATER  
GOR

Mobil Exploration & Producing U.S.

Midland South Team

Field: VACUUM  
Lease: NEW MEXICO K STATE #35  
Operator: EXXON CORPORATION  
County: LEA

State: NM

Current Date: 03-26-92

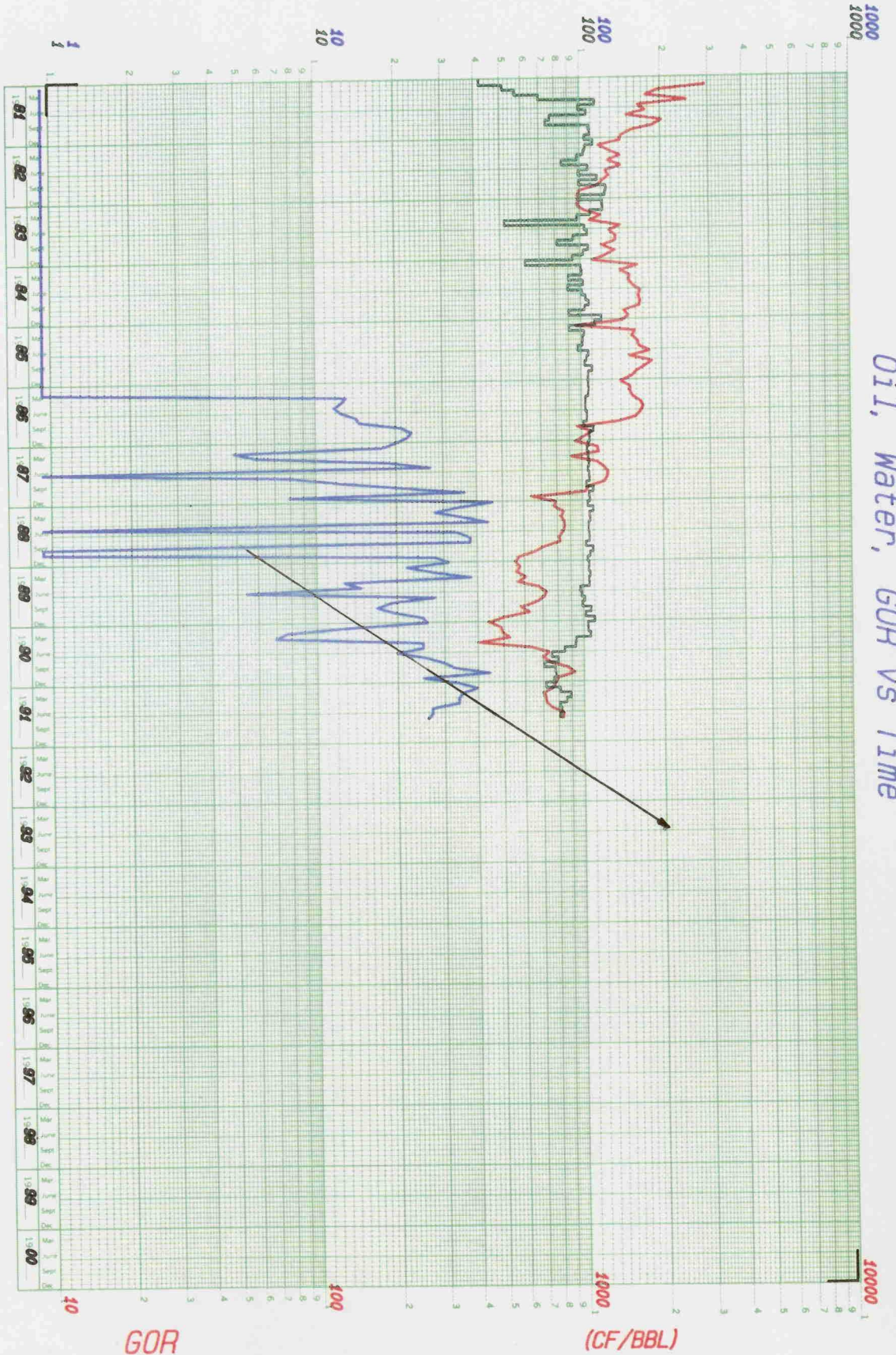
Code: 17339E2808L



# WATER DAILY OIL PRODUCTION

(BBL/DAY)  
(BBL/DAY)

Oil, Water, GOR vs Time



## LEGEND

OIL  
WATER  
GOR

Mobil Exploration & Producing U.S.

Midland South Team

Field: VACUUM  
Lease: SKELLY P STATE  
Operator: TEXACO  
County: LEA

State: NM

Current Date: 03-27-92

Code: 17536E3306L