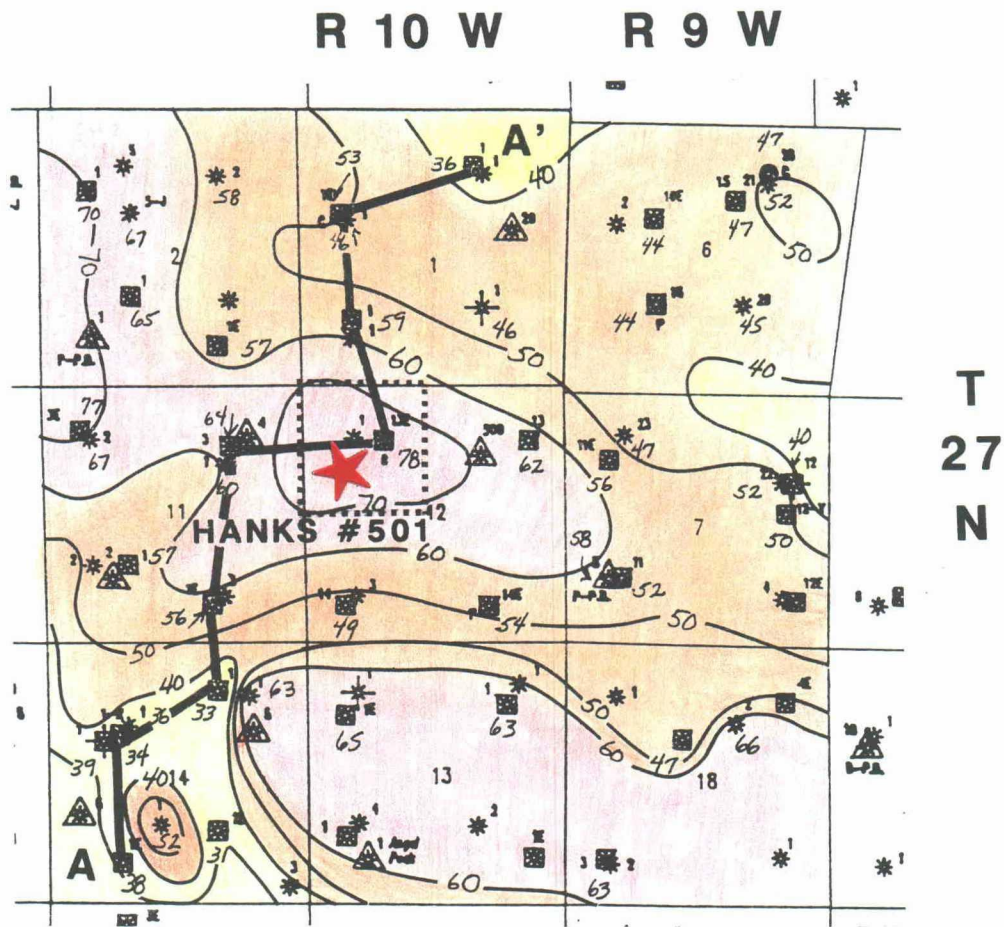


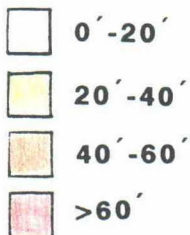
EXHIBIT 5



San Juan County, New Mexico

**PICTURED CLIFFS
NET PAY ISOPACH**

LEGEND



C.I. = 10 Feet

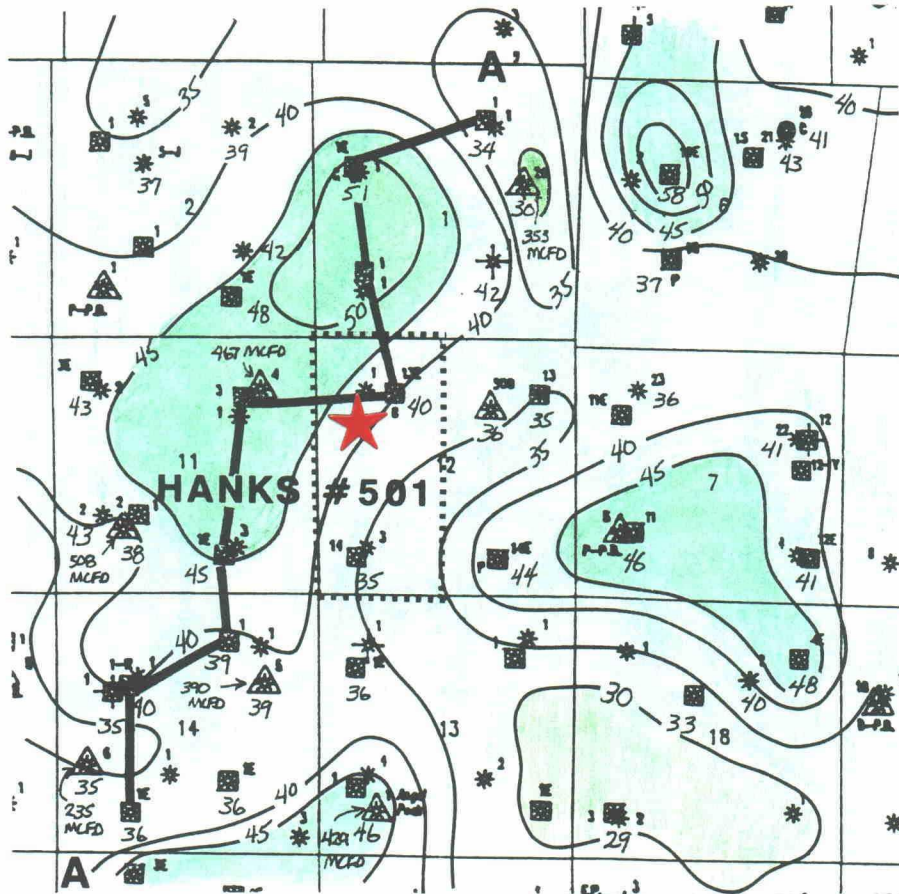
Net Pay = $R_t > \text{Shale Baseline} \ \& \ SP > (10) \text{ mv Deflection}$

SCALE 1" = 4000'

KMSH 8/92

R 10 W

R 9 W

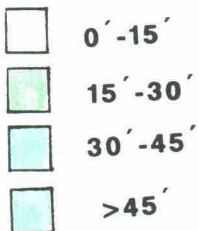


T
27
N

San Juan County, New Mexico

**FRUITLAND COAL
NET CLEAN COAL ISOPACH
C.I. = 5 Feet**

LEGEND

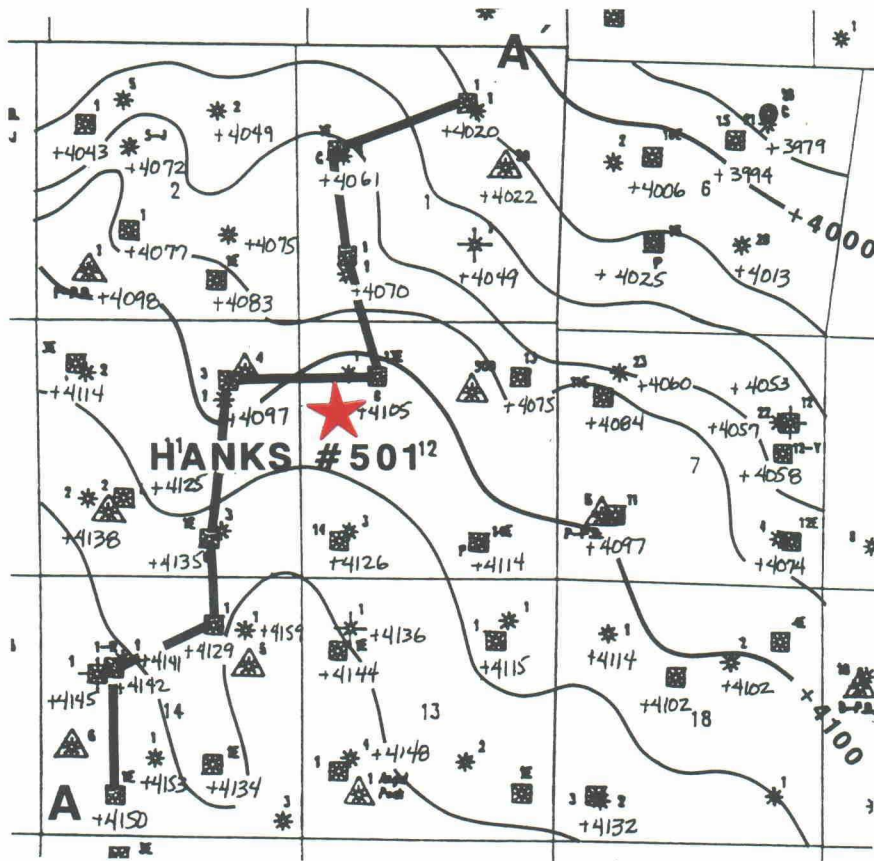


SCALE 1" = 4000'

Dec. 1991 Kfc
223 MCFD Ave. Daily Prod. Rates

KMSH 8/92

R 10 W R 9 W



T
27
N

San Juan County, New Mexico

STRUCTURE BASE OF FRUITLAND COAL

C.I. = 20 Feet

SCALE 1" = 4000'

KMSH 8/92