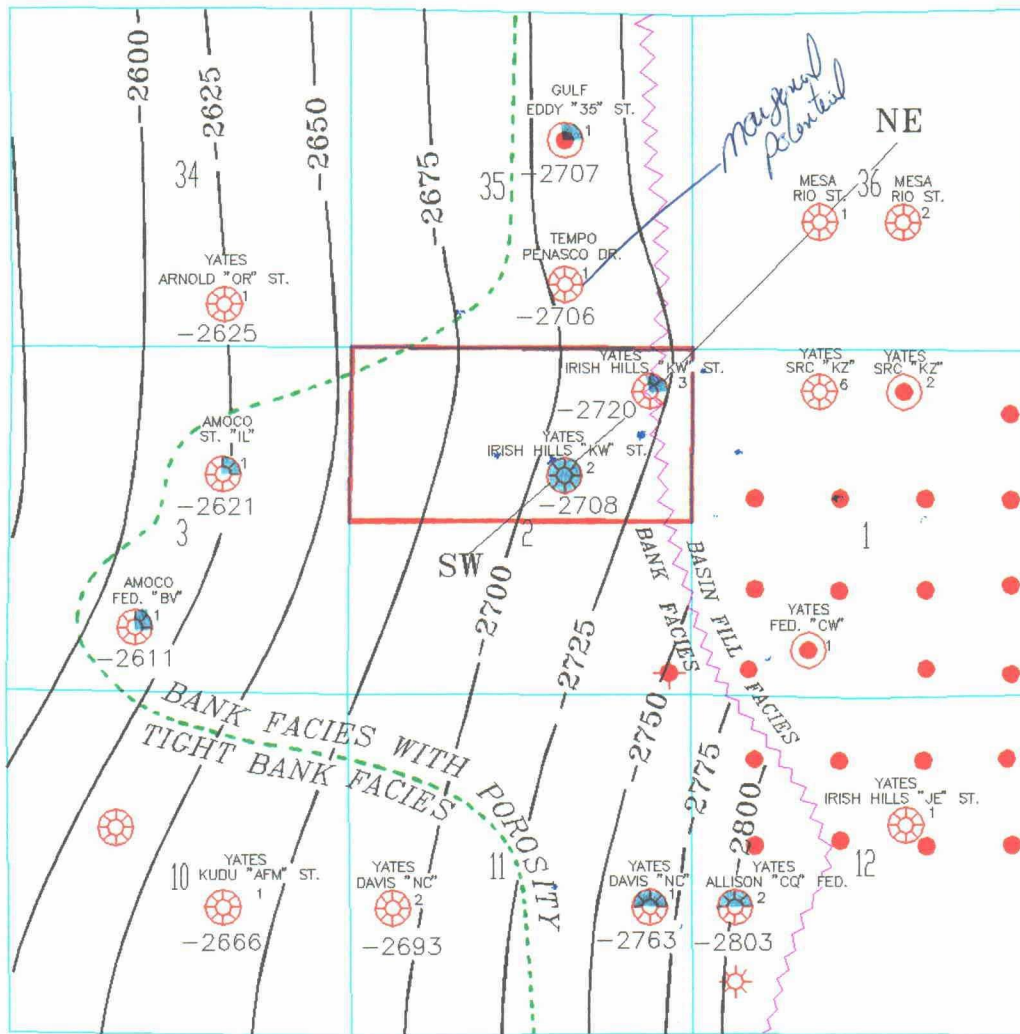


Exhibits 1 through 4 and
Complete Set

R24E





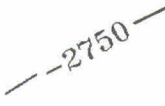


T
18
S

T
19
S



DRAFT\92055E
5-28-93 JF

LEGEND

-  PERMO-PENN PENETRATIONS (DOUBLE CIRCLED)
- 2666 - SUBSEA DATUM OF TOP OF CISCO MARKER
-  PERMO-PENN PRODUCER
-  GOOD POTENTIAL FOR PERMO-PENN PRODUCER
-  MARGINAL POTENTIAL FOR PERMO-PENN PRODUCER
-  -2750- SOLID CONTOURS: STRUCTURE ON TOP OF CISCO MARKER
C.I. = 25 FEET
-  BOUNDARY BETWEEN PERMO-PENN BANK FACIES AND BASIN FILL FACIES
-  WEST LIMIT OF EFFECTIVE BANK FACIES POROSITY

**BEFORE THE
OIL CONSERVATION DIVISION**
Santa Fe, New Mexico

Case No. 10543 Exhibit No. 1

Submitted by: Yates Petroleum Corporation

Hearing Date: June 17, 1993