



BEFORE EXAMINER CATANACH	
OIL AND SEVERAL DIVISION	
Amoco	EXHIBIT NO. C
CASE NO.	10593

Amoco Production Company
November 5, 1992

Amoco Production Company

CAMPBELL, CARR, BERGE

& SHERIDAN, P.A.

LAWYERS

MICHAEL B. CAMPBELL
WILLIAM F. CARR
BRADFORD C. BERGE
MARK P. SHERIDAN
WILLIAM P. SLATTERY

PATRICIA A. MATTHEWS
MICHAEL H. FELDEWERT

JACK M. CAMPBELL
OF COUNSEL

JEFFERSON PLACE

SUITE 1 - 110 NORTH GUADALUPE

POST OFFICE BOX 2208

SANTA FE, NEW MEXICO 87504-2208

TELEPHONE (505) 988-4421

TELECOPIER (505) 983-6043

October 14, 1992

HAND-DELIVERED

William J. LeMay, Director
Oil Conservation Division
New Mexico Department of Energy,
Minerals and Natural Resources
State Land Office Building
Santa Fe, New Mexico 87503

RECEIVED

OCT 14 1992

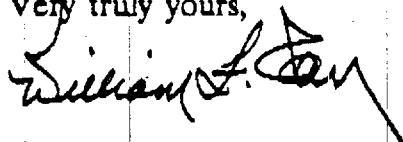
OIL CONSERVATION DIVISION

Re: In the Matter of the Application of Amoco Production Company for
Approval of an Unorthodox Gas Well Location and Acreage Rededication,
San Juan County, New Mexico

Dear Mr. LeMay:

Enclosed in triplicate is the Application of Amoco Production Company in the above-referenced case. Amoco Production Company respectfully request that this matter be placed on the docket for the November 5, 1992 Examiner hearings.

Very truly yours,



WILLIAM F. CARR

WFC:mlh

Enclosures

cc w/enclosures: Mr. Bill Hawkins
Amoco Production Company

BEFORE THE
OIL CONSERVATION DIVISION

NEW MEXICO DEPARTMENT OF ENERGY, MINERALS AND NATURAL RESOURCES

RECEIVED

IN THE MATTER OF THE APPLICATION OF
AMOCO PRODUCTION COMPANY FOR APPROVAL
OF AN UNORTHODOX GAS WELL LOCATION
AND ACREAGE REDEDICATION,
SAN JUAN COUNTY, NEW MEXICO.

OCT 14 1992

OIL CONSERVATION DIVISION

CASE NO. _____

APPLICATION

COMES NOW AMOCO PRODUCTION COMPANY ("Amoco"), by its undersigned attorneys, and applies to the New Mexico Oil Conservation Division for approval of an unorthodox well location in the Basin-Fruitland Coal Gas Pool and for acreage rededication for its Fields A-21-R Well to be drilled at an unorthodox well location 820 feet from the North line and 1820 feet from the West line of Section 25, Township 32 North, Range 11 West, N.M.P.M., San Juan County, New Mexico, to be dedicated to a 320-acre spacing unit consisting of the West half of Section 25, and in support of this application states:

1. Amoco is the operator of Section 25 on which two wells are located which produce from the Basin-Fruitland Coal Gas Pool. The North half of the section is currently dedicated to the Fields A-20 Well which is located at a standard location in the Northeast quarter of the section and the South half of the section is dedicated to the Fields A-21 Well which is located at a standard location in the Southwest quarter of the section. The Fields A-21 Well in the SE/4 of the section is only capable of marginal

production.

2. The Working Interest Ownership and the Royalty Interest Ownership is common throughout Section 25.

3. Amoco has been unsuccessful in its efforts to obtain a commercial Fruitland Coal Gas well in the SW/4 of Section 25 and reserves are being drained from the NW/4 of this section.

4. To prevent drainage of the reserves from the W/2 of Section 25 Amoco proposes to rededicate acreage so that the East half of the section will be dedicated to the Fields A-20 Well in the NE/4 and then to drill its Fields A-21-R Well in the NW/4 and dedicate the West half of the section to this new well.

5. Amoco therefore seeks authority to drill its Fields A-21-R Well in the Basin-Fruitland Coal Gas Pool at an unorthodox location in the NW/4 820 feet from the North line and 1820 feet from the West line of Section 25 as a replacement well for its Fields A-21 Well which will not be produced after the replacement well is completed.

6. The proposed location is unorthodox for the Basin-Fruitland Coal Gas Pool because it is located in the NW/4 of the section and an exception to Rule 7 of the Basin Fruitland Coal Gas Pool Rules (Order R-8768) is therefore required.

7. The proposed unorthodox location is necessary in order for the applicant to economically recover the Basin-Fruitland Coal Gas Pool reserves that are present under the W/2 of Section 25 and to avoid having this acreage drained by offsetting wells.

8. Amoco requests that this matter be docketed for hearing on the Division Examiner docket now scheduled for November 5, 1992.

9. A copy of this application has been sent to all offsetting operators and interested parties who might be affected by this application as identified and set forth as required by the Rules of the Division.

WHEREFORE, Amoco Production Company requests that this matter be set for hearing on November 5, 1992 before a duly appointed Examiner of the Oil Conservation Division and that after notice and hearing as required by law, the Division enter its Order granting this application.

Respectfully submitted,

CAMPBELL, CARR, BERGE
& SHERIDAN, P.A.

By: 

WILLIAM F. CARR

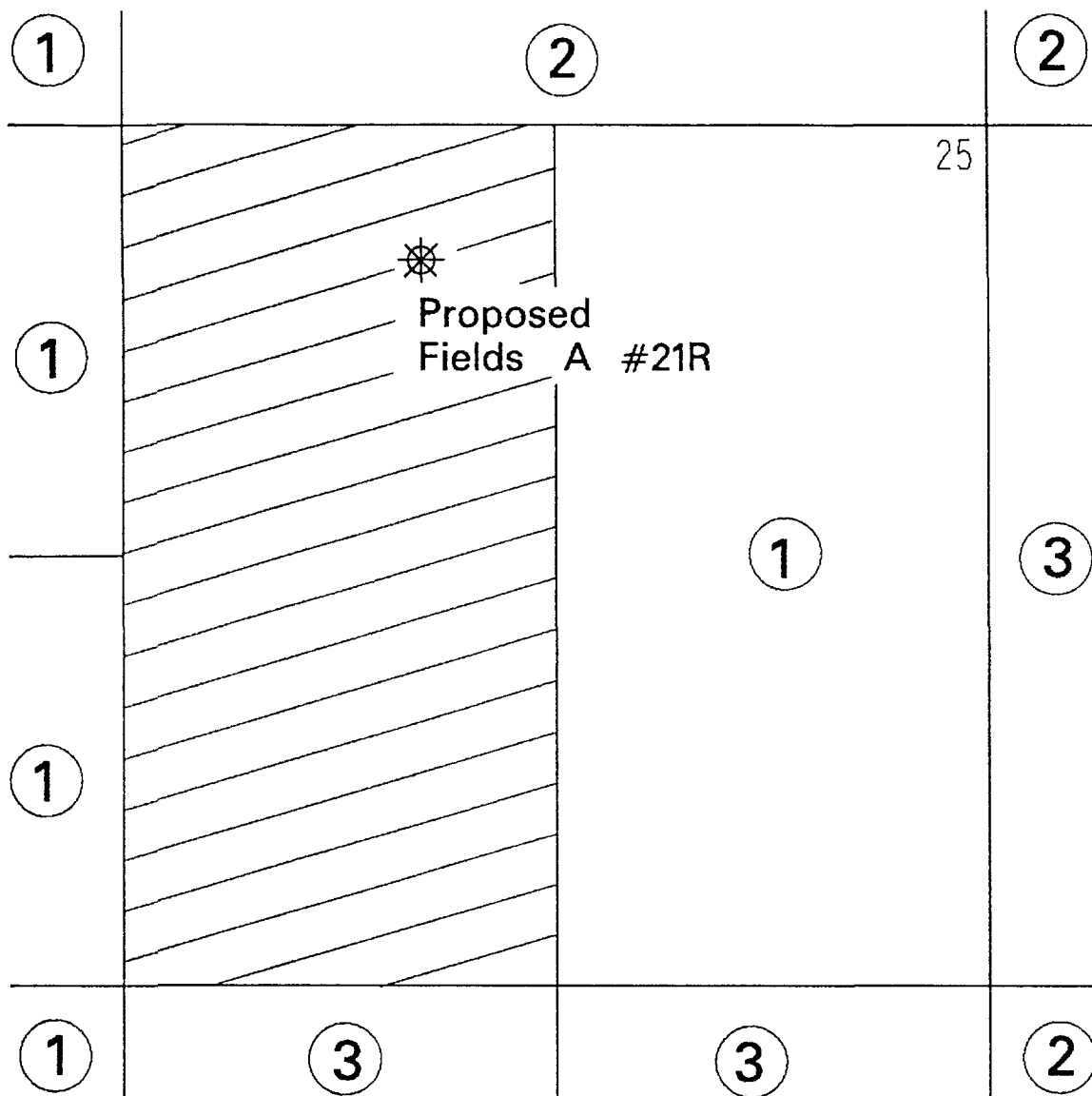
Post Office Box 2208

Santa Fe, New Mexico 87504

Telephone: (505) 988-4421

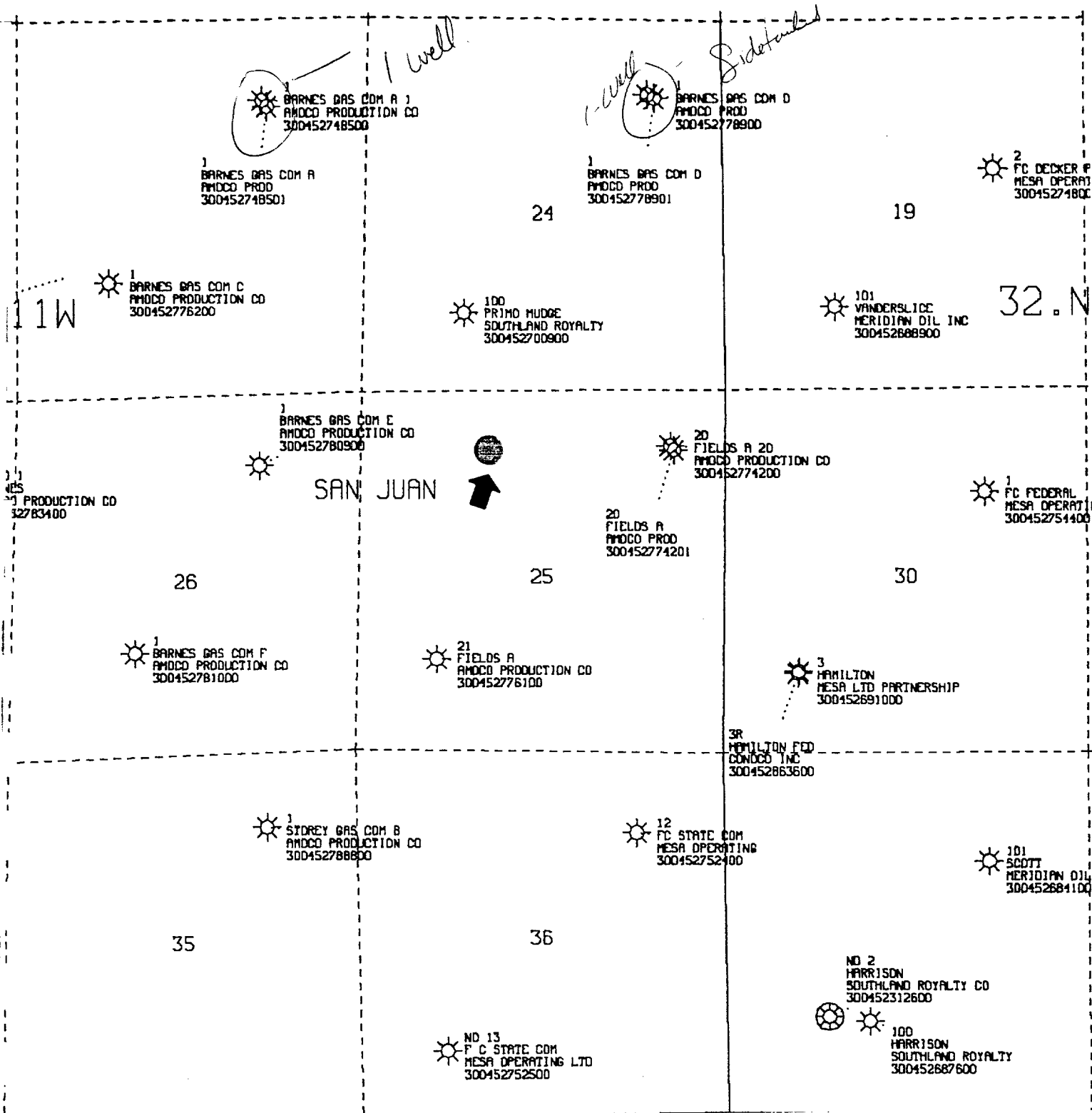
ATTORNEYS FOR AMOCO PRODUCTION
COMPANY

AMOCO PRODUCTION COMPANY
 OFFSET OPERATOR PLAT
 FIELDS A #21R
 Township 32 North, Range 11 West
 820' FNL, 1820' FWL Section 25
 Fruitland Coal Formation



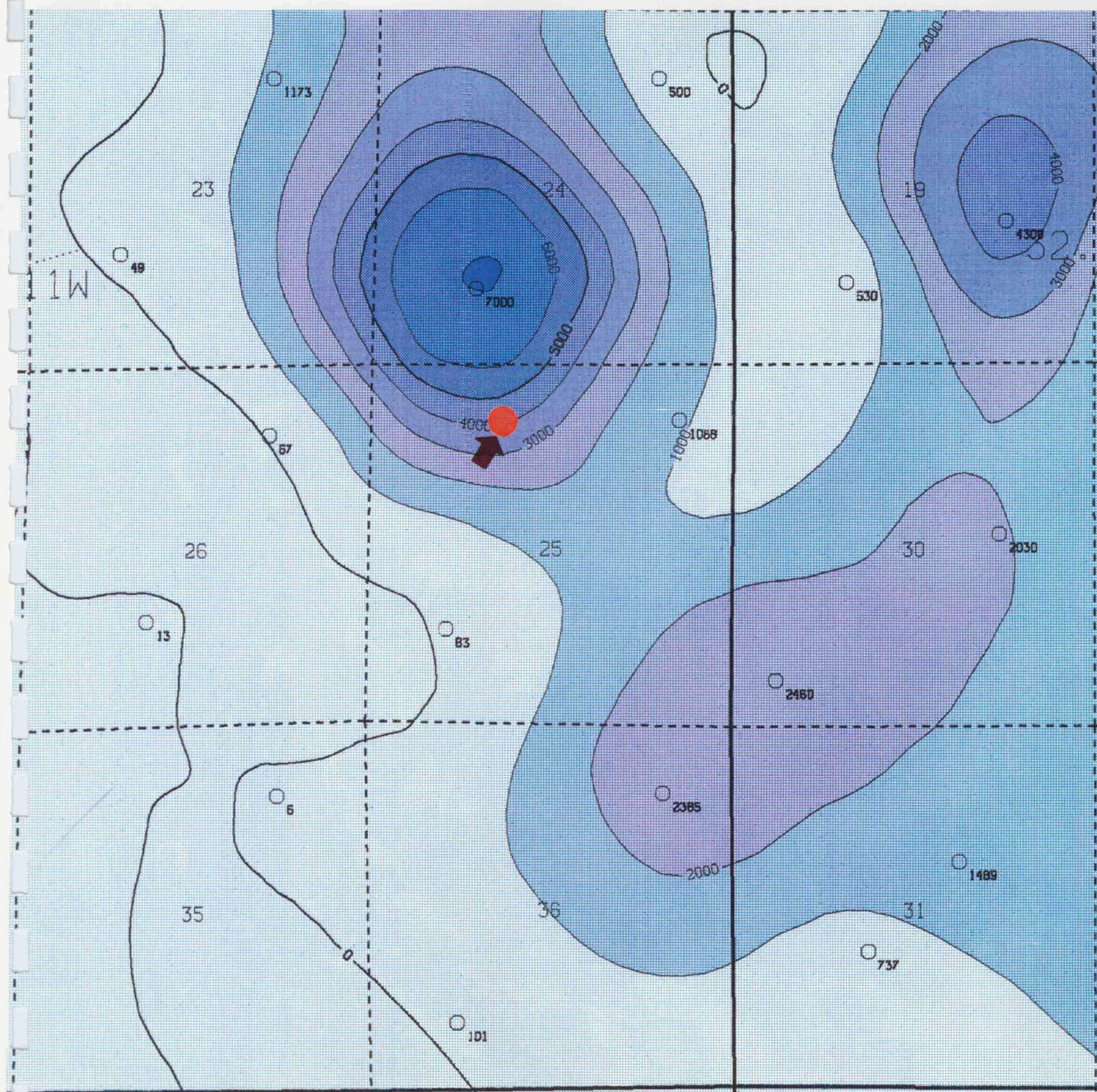
- ① AMOCO PRODUCTION COMPANY
- ② MERIDIAN OIL INC., P.O. Box 4289, Farmington, NM 87499-4289
- ③ CONOCO INC., 10 Desta Drive, Suite 100W, Midland TX 79705-4500

Amoco Production Company
 November 5, 1992
 NMOCD Case 10593
 Exhibit No. 1



AMOCO PRODUCTION COMPANY PLAT MAP

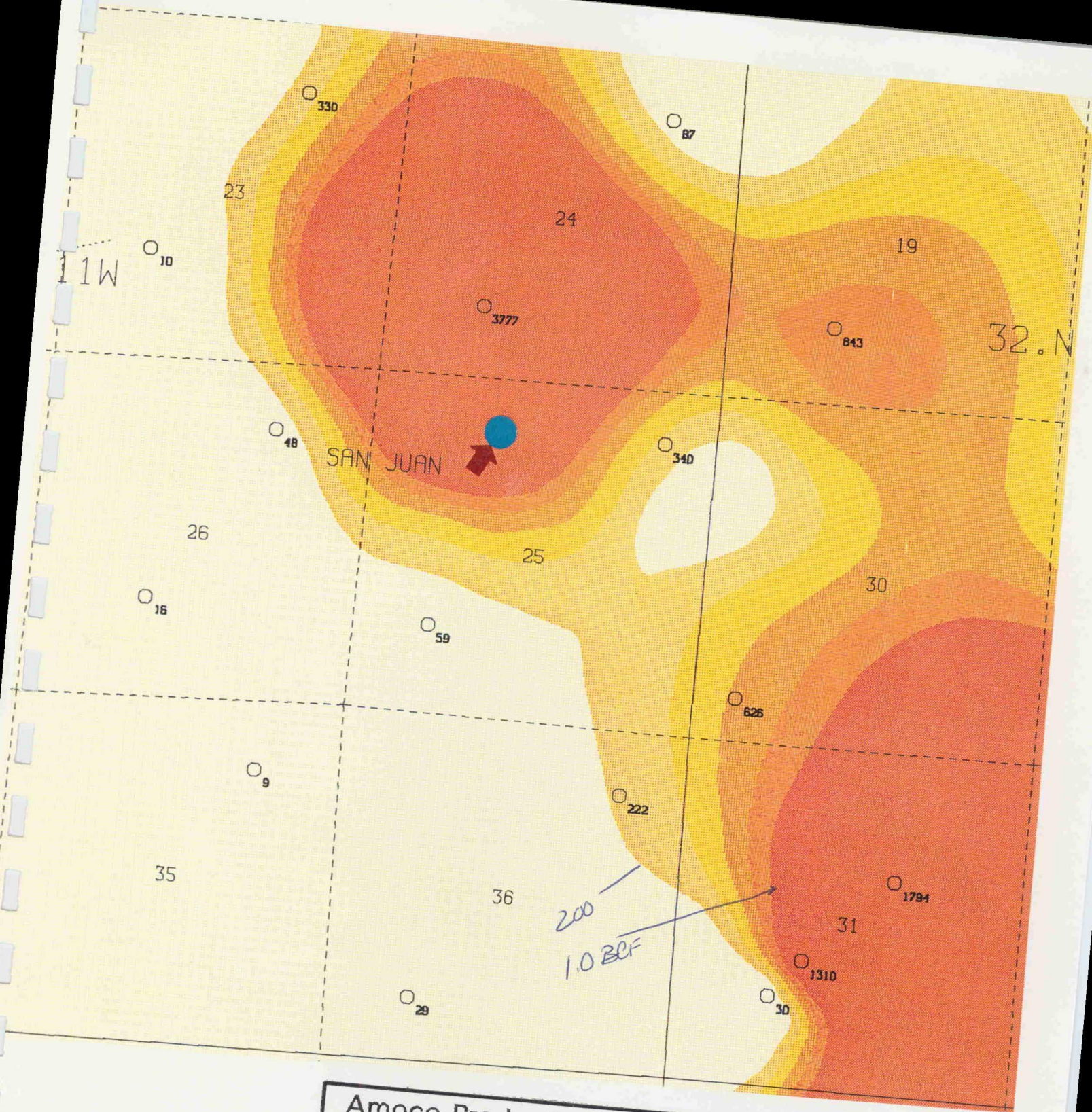
FIELDS A 21
SEC 25-T32N-R11W
SCALE 1 IN. = 2,000 FT. OCT 23, 1992



**Amoco Production Company - SRBU
Fruitland Coal Wells**

Average Daily Production MCFD

**Contour Interval - 1000 MCFD
SCALE 1 IN. = 2,000 FT. OCT 30, 1992**



Amoco Production Company - SRBU
Fields A 21 Cum/Gas

DEPTHARM = DATUM1
AMOCO1 CONTOUR INTERVAL = 200
SCALE 1 IN. = 2,000 FT. OCT 29, 1992

*200 mmcf
gas produced*

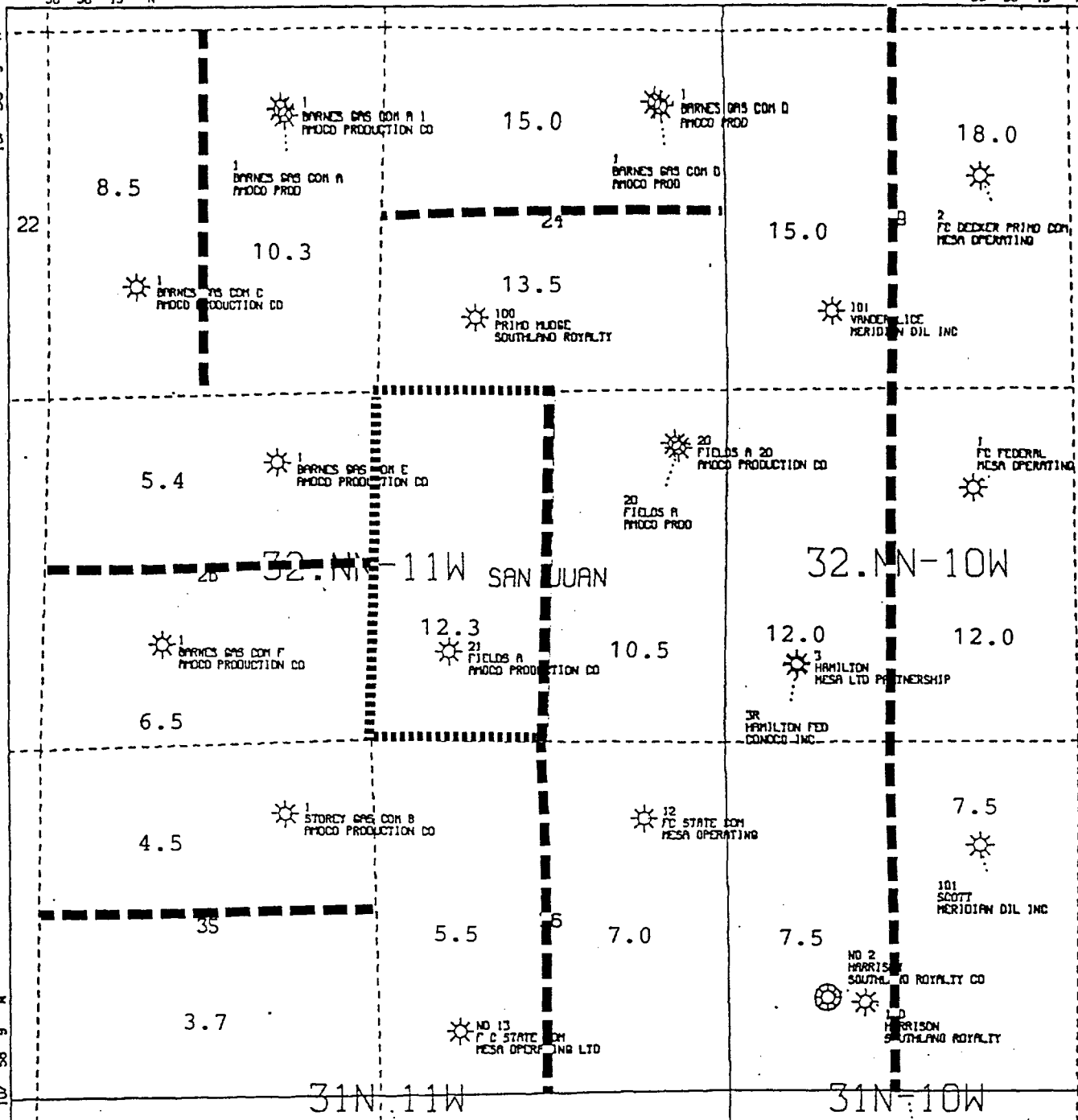
Amoco Production Company
November 5, 1992
NMOCD Case 10593

13,431,527.13 FT. N
36° 58' 43" N

13,431,527.13 FT. N
36° 58' 43" N

991,841.05 FT. E
107° 54' 48" E

1,008,158.95 FT. E
107° 54' 48" E



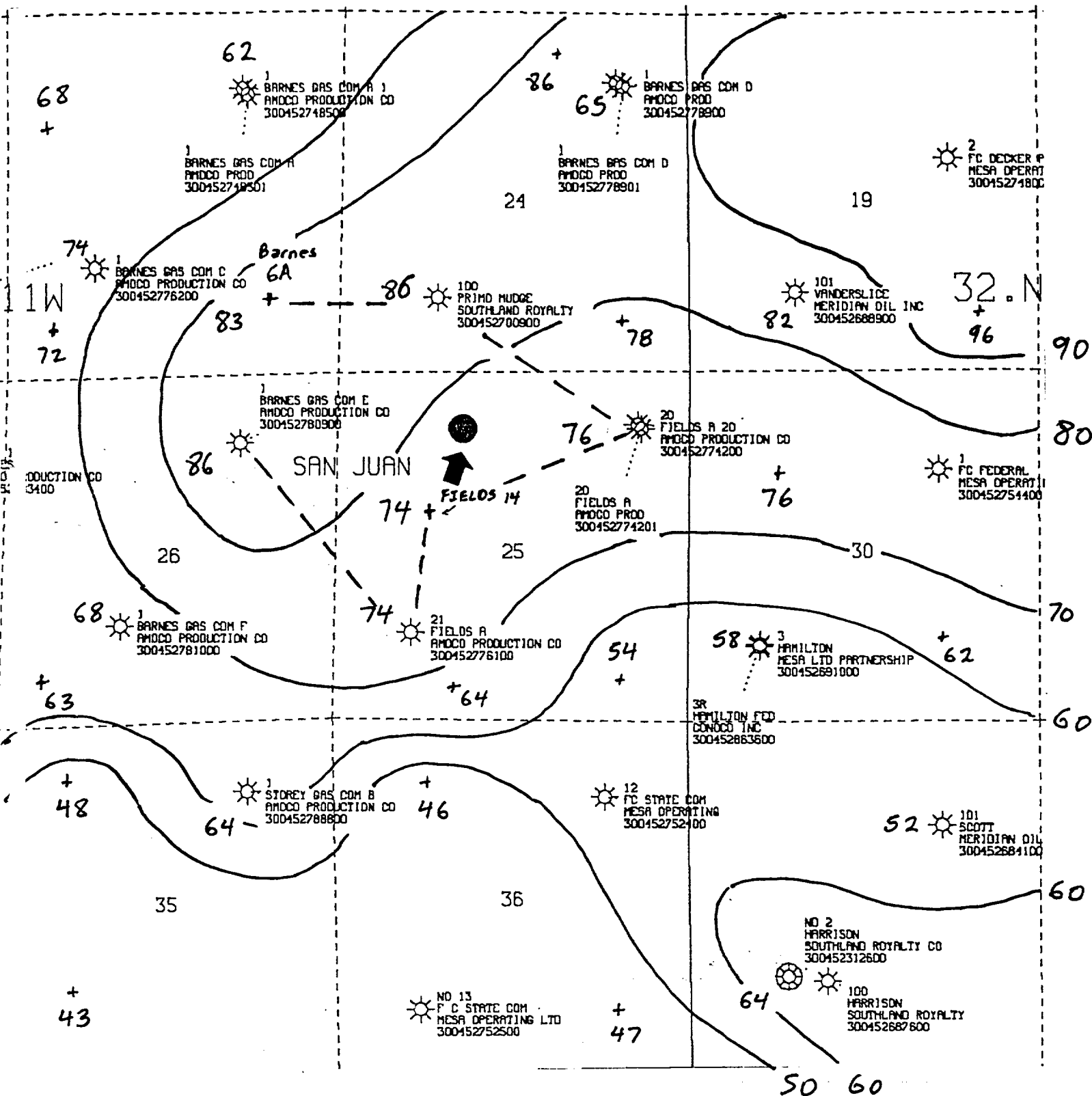
All geological and geophysical data, including the interpretation thereof, appearing on this map is the private and confidential property of Amoco Production Company. The publication or reproduction thereof without the written permission of said Company is strictly prohibited.

Fruitland Coal - original gas in place, BCF/320 Acres.

AMOCO PRODUCTION COMPANY

POLYCONIC CENTRAL MERIDIAN - 107° 56' 29" W LON
SPHEROID - 8

FIELDS A 21
SEC 25-T32N-R11W



AMOCO PRODUCTION COMPANY FRUITLAND COAL THICKNESS

(BULK DENSITY ≤ 2.0 gm/cc)

GEOLOGIST: W.L. PELZMAN

SCALE 1 IN. = 2,000 FT. NOV. 3, 1992

