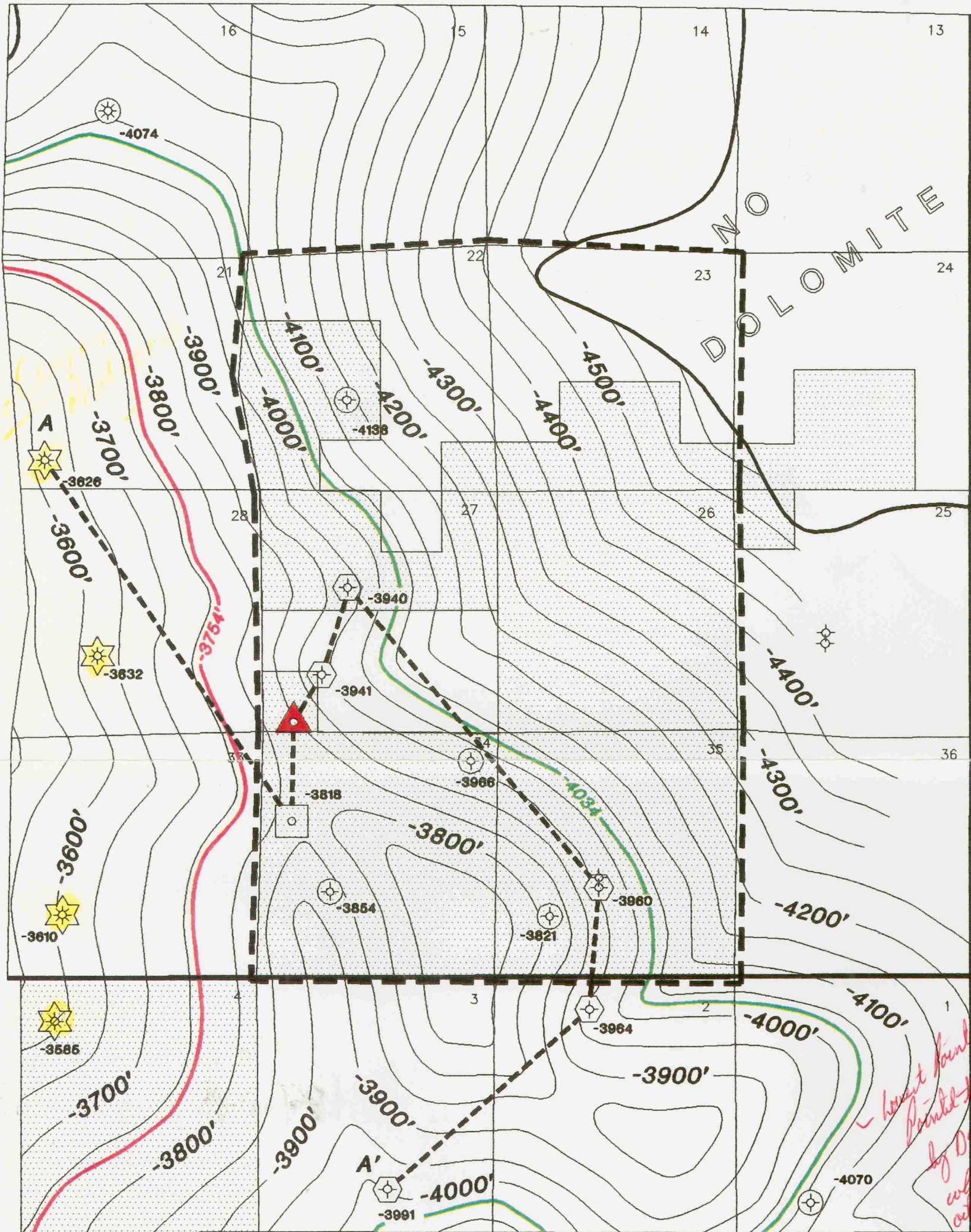

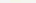




R 24 E



- |   |   |
|---|---|
|  | SFEOP,LP, NESTE, NORTH CENTRAL LEASEHOLD          |
|  | SFEOP,LP, NESTE, NORTH CENTRAL A.M.I              |
|  | SFEOP,LP RIGHTHAND CANYON FED. °34° ±1            |
|  | SFEOP,LP ROCKY TOP FED. °27° ±1 PROPOSED LOCATION |

- ☐ CISCO/CANYON PENETRATION - NO OIL OR GAS TESTS  
☐ CISCO/CANYON PENETRATION - OIL, GAS AND WATER REC. BY DST  
☐ CISCO/CANYON PRODUCER

NDE NOT DEEP ENOUGH

BEFORE EXAMINER STOGNER

OIL CONSERVATION DIVISION

Santa Fe EXHIBIT NO. 10

CASE NO. 10629/10628



Santa Fe Energy Operating Partners, LP.

**CENTRAL DIVISION**  
**MIDLAND, TEXAS**

CARLSBAD AREA

## EAST INDIAN HILLS AREA

EDDY COUNTY, NEW MEXICO

## STRUCTURE MAP CISCO CANYON DOLOMITE

Geol. By: G. Davis  
Scale: 1"=2500'

C.I.: 50°  
Date: 12-1-92

EINDHEAR.DWG

File: 3-T-3