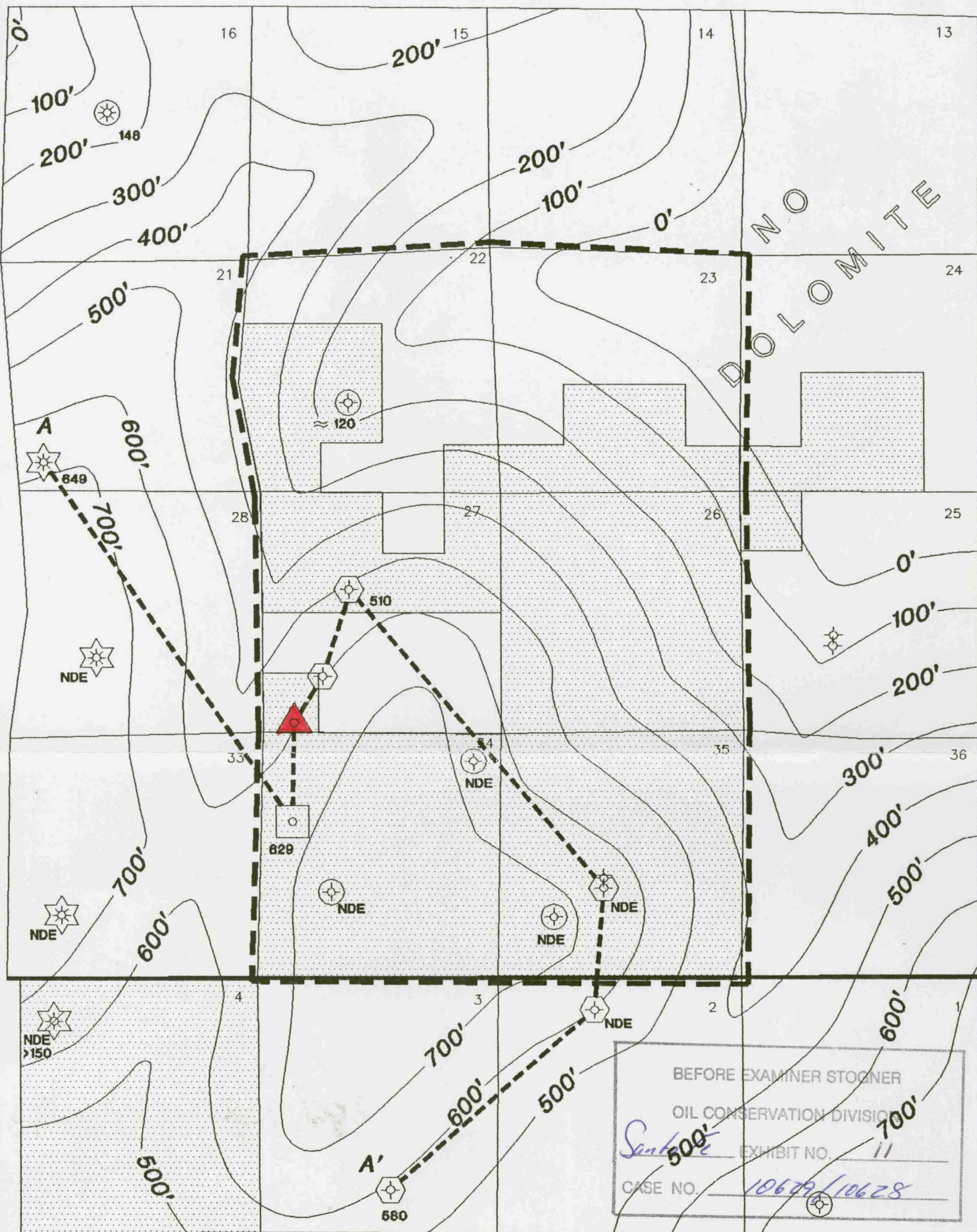


R 24 E



T 21 S

- SFEOP,LP, NESTE, NORTH CENTRAL LEASEHOLD
- SFEOP,LP, NESTE, NORTH CENTRAL A.M.I.
- SFEOP,LP RIGHTHAND CANYON FED. '34' #1
- SFEOP,LP ROCKY TOP FED. '27' #1 PROPOSED LOCATION

- CISCO/CANYON PENETRATION - NO OIL OR GAS TESTS
- CISCO/CANYON PENETRATION - OIL, GAS AND WATER REG. BY DST
- CISCO/CANYON PRODUCER

NDE NOT DEEP ENOUGH

**Santa Fe Energy Operating Partners, LP.**  
CENTRAL DIVISION  
MIDLAND, TEXAS

---

CARLSBAD AREA  
**EAST INDIAN HILLS AREA**  
EDDY COUNTY, NEW MEXICO

---

**ISOPACH MAP**  
**CISCO CANYON DOLOMITE**

Geol. By: G. Davis  
Scale: 1"=2500'

C.I.: 100'  
Date: 12-1-92

EINDHEAR.DWG File: 3-T-3

BEFORE EXAMINER STOCHNER  
OIL CONSERVATION DIVISION

*Santa Fe* EXHIBIT NO. 11

CASE NO. 10679/10628