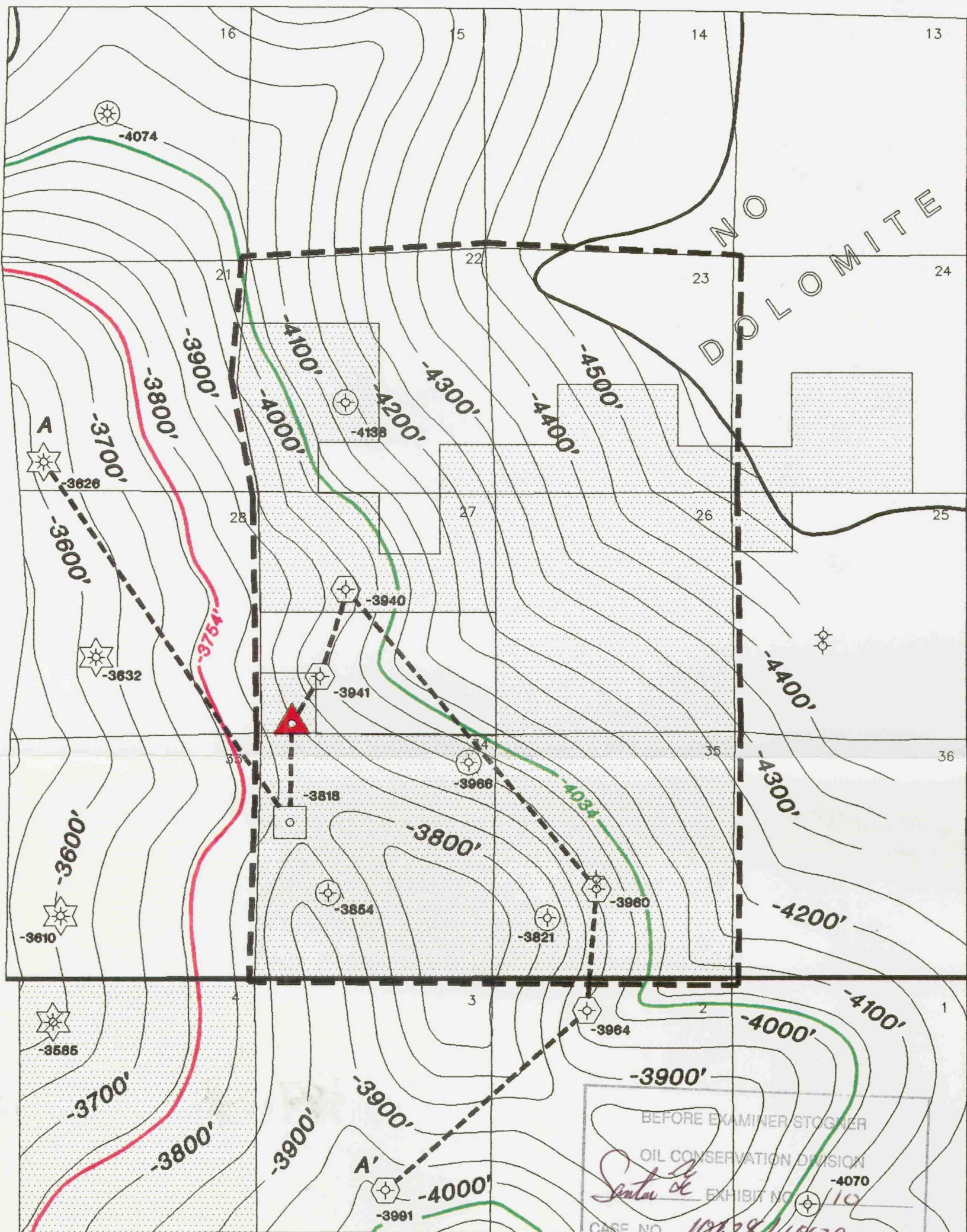


R 24 E



T 21 S

- SFEOP,LP, NESTE, NORTH CENTRAL LEASEHOLD
- SFEOP,LP, NESTE, NORTH CENTRAL A.M.L
- SFEOP,LP RIGHTHAND CANYON FED. '34' #1
- SFEOP,LP ROCKY TOP FED. '27' #1 PROPOSED LOCATION

- CISCO/CANYON PENETRATION - NO OIL OR GAS TESTS
- CISCO/CANYON PENETRATION - OIL, GAS AND WATER REC. BY DST
- CISCO/CANYON PRODUCER

NDE NOT DEEP ENOUGH



Santa Fe Energy Operating Partners, LP.
CENTRAL DIVISION
MIDLAND, TEXAS

CARLSBAD AREA

EAST INDIAN HILLS AREA
EDDY COUNTY, NEW MEXICO

STRUCTURE MAP
CISCO CANYON DOLOMITE

Geol. By: G. Davis
Scale: 1"=2500'

C.I.: 50'
Date: 12-1-92

EINDHEAR.DWG

File: 3-T-3