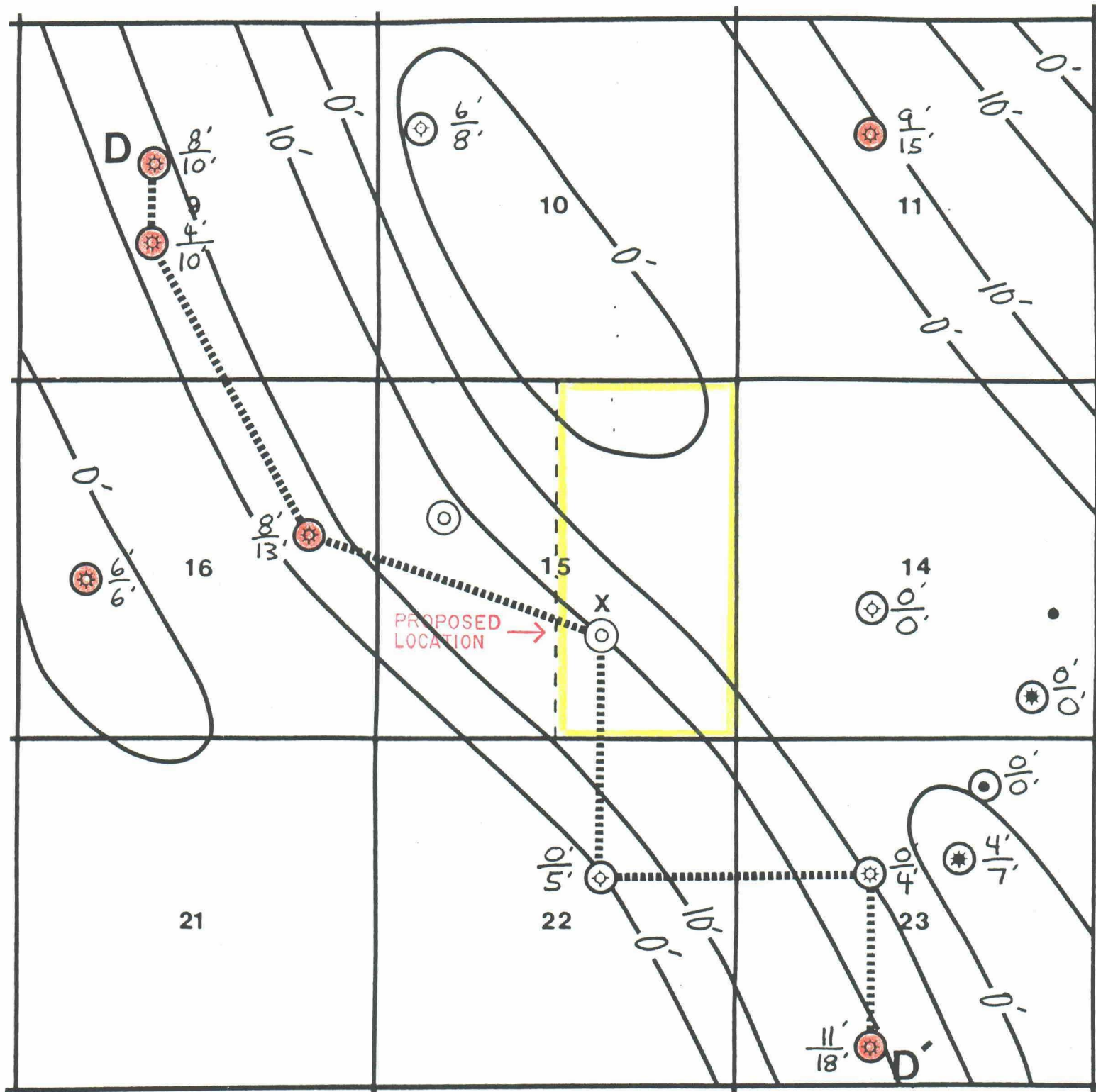


R 28 E

T 18 S



- MORROW PENETRATIONS
- ZONE PRODUCER

Net Porosity $\geq 7\%$
Gross Sand

MOC

MEWBOURNE OIL COMPANY

MIDLAND, TEXAS DISTRICT

NORTH TURKEY TRACK PROSPECT
EDDY COUNTY, NEW MEXICO

Lower Morrow Orange Sand
Net Porosity Isopach
Contour Interval = 10'

BEFORE EXAMINER STOGNER

OIL CONSERVATION DIVISION

Mewbourne EXHIBIT NO. 11

CASE NO. 10635

November 1992

Scale 1"=2000'

Dexter Harmon