

**BEFORE THE  
OIL CONSERVATION DIVISION  
Santa Fe, New Mexico**

Case No. 10711 (Reopened) Exhibit No. 3

Submitted by: Yates Petroleum Corporation

Hearing Date: September 9, 1993

YATES PETROLEUM CORPORATION's Creek "AL" Federal Well No. 13,  
2310' FNL, 330' FWL, and access road, Sections 25 and 26, T18S,  
R30E, NMPM, Eddy County, New Mexico, archaeological site.  
(Move 200' south.)

250'  
SOUTH

Submit to Appropriate  
District Office  
State Lease - 4 copies  
Fee Lease - 3 copies

State of New Mexico  
Energy, Minerals and Natural Resources Department

Form C-102  
Revised 1-1-89

OIL CONSERVATION DIVISION

P.O. Box 2088  
Santa Fe, New Mexico 87504-2088

DISTRICT I  
P.O. Box 1980, Hobbs, NM 88240

DISTRICT II  
P.O. Drawer DD, Artesia, NM 88210

DISTRICT III  
3000 Rio Brazos Rd., Aztec, NM 87410

WELL LOCATION AND ACREAGE DEDICATION PLAT

All Distances must be from the outer boundaries of the section

Operator YATES PETROLEUM CORPORATION			Lease CREEK "AL" FEDERAL			Well No. 13		
Unit Letter E	Section 25	Township 18 SOUTH	Range 30 EAST	County NMPM		EDDY		
Actual Footage Location of Well:								
2310 feet from the NORTH line and			330 feet from the WEST line					
Ground level Elev. 3461		Producing Formation		Pool		Dedicated Acreage: Acres		

1. Outline the acreage dedicated to the subject well by colored pencil or hachure marks on the plat below.

2. If more than one lease is dedicated to the well, outline each and identify the ownership thereof (both as to working interest and royalty).

3. If more than one lease of different ownership is dedicated to the well, have the interest of all owners been consolidated by communitization, unitization, force-pooling, etc.?

☐ Yes ☐ No If answer is "yes" type of consolidation

If answer is "no" list the owners and tract descriptions which have actually been consolidated. (Use reverse side of this form if necessary).

No allowable will be assigned to the well until all interests have been consolidated (by communitization, unitization, forced-pooling, or otherwise) or until a non-standard unit, eliminating such interest, has been approved by the Division.

OPERATOR CERTIFICATION

I hereby certify that the information contained herein is true and complete to the best of my knowledge and belief.

Signature

Printed Name

Position

Company

Date

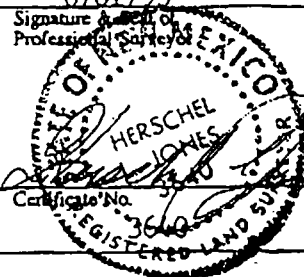
SURVEYOR CERTIFICATION

I hereby certify that the well location shown on this plat was plotted from field notes of actual surveys made by me or under my supervision, and that the same is true and correct to the best of my knowledge and belief.

Date Surveyed

6/01/93

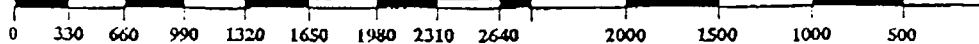
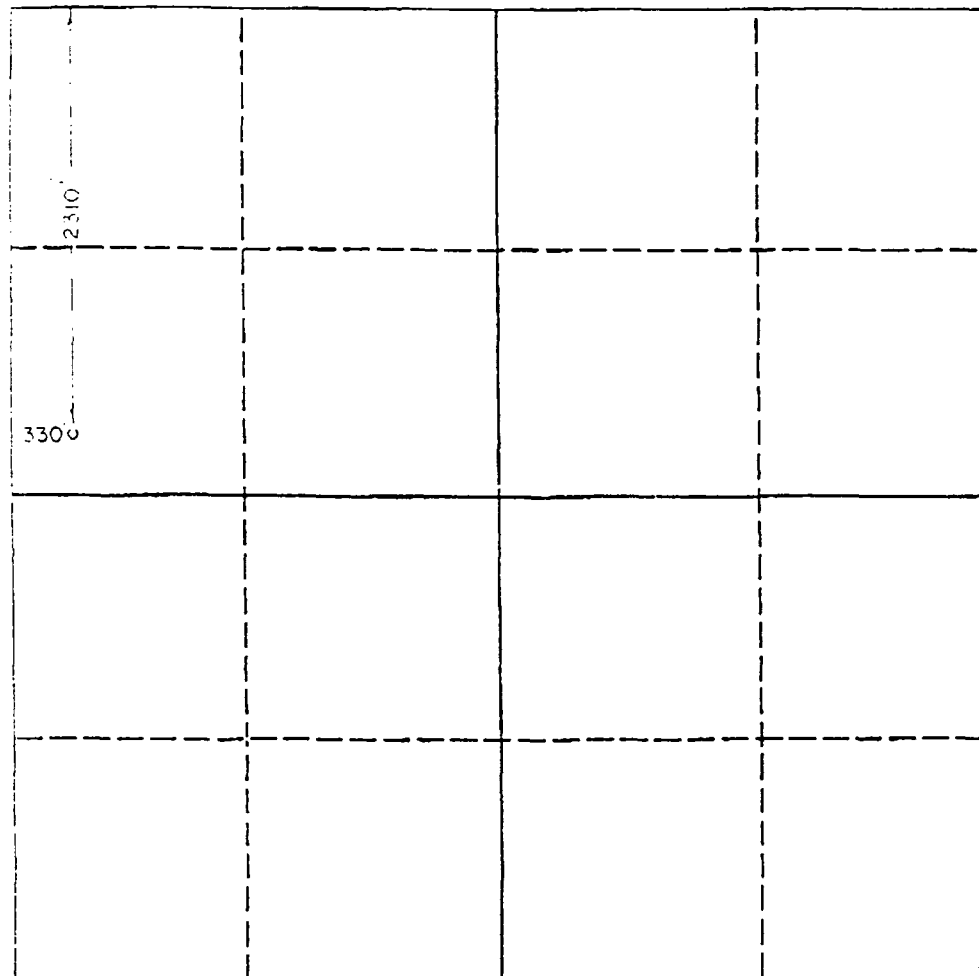
Signature & Seal of  
Professional Surveyor

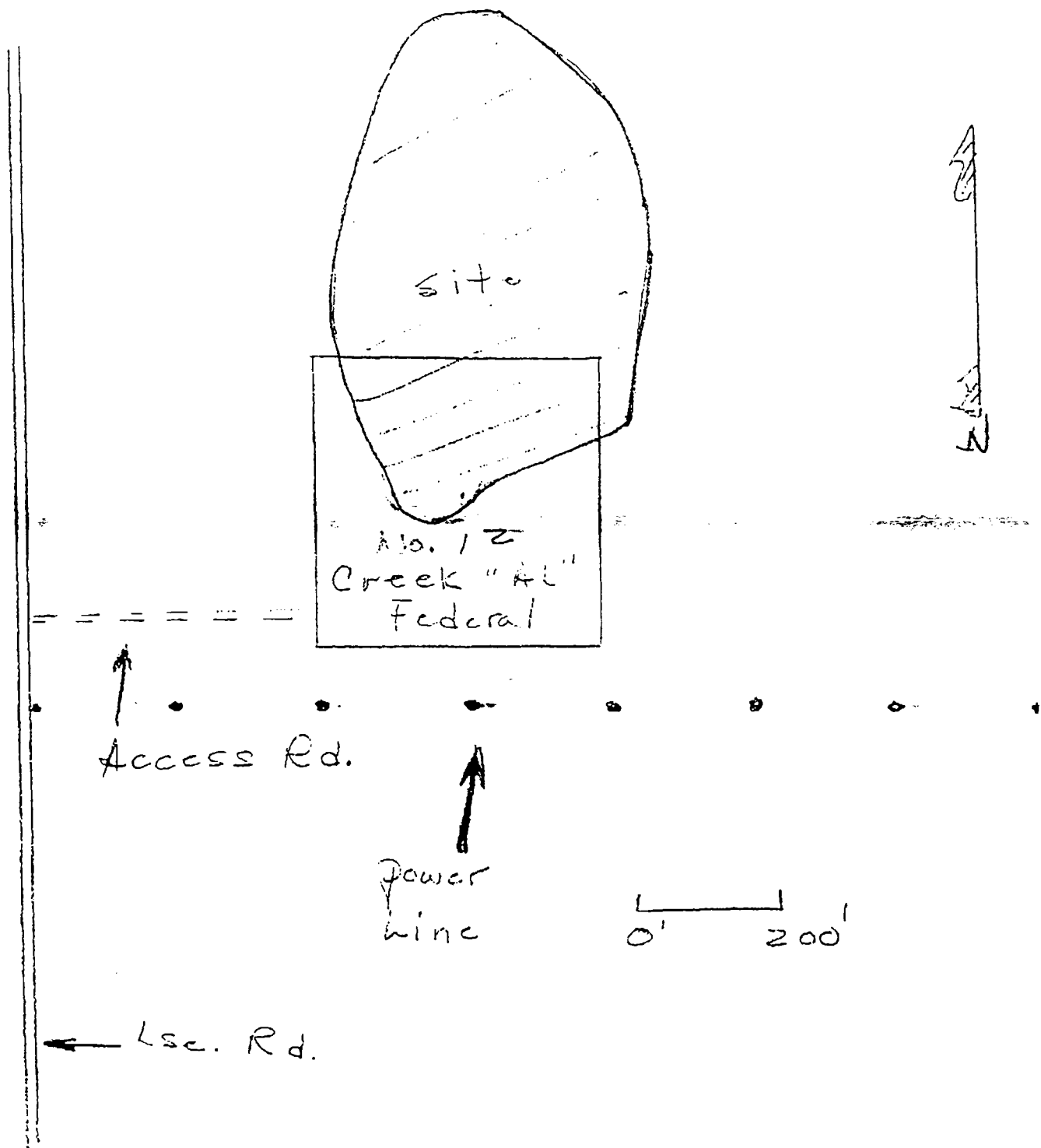


Certificate No.

3640

REGISTERED LAND SURVEYOR





YATES PETROLEUM CORPORATION's Creek "AL" Federal Well No. 12, 1155' FNL, 330' FWL, and access road, Sections 25 and 26, T18S, R30E, NMPM, Eddy County, New Mexico, vis à vis archaeological site.

Submit to Appropriate  
District Office  
State Lease - 4 copies  
Fee Lease - 3 copies

State of New Mexico  
Department of Geology, Minerals and Natural Resources

Form C-102  
Revised 1-1-89

OIL CONSERVATION DIVISION

P.O. Box 2088  
Santa Fe, New Mexico 87504-2088

DISTRICT I

P.O. Box 1980, Hobbs, NM 88240

DISTRICT II

P.O. Drawer DD, Artesia, NM 88210

DISTRICT III

1000 Rio Brazos Rd., Aztec, NM 87410

WELL LOCATION AND ACREAGE DEDICATION PLAT

All Distances must be from the outer boundaries of the section

Operator YATES PETROLEUM CORPORATION			Lease CREEK "AL" FEDERAL		Well No. 12
Unit Letter D	Section 25	Township 18 SOUTH	Range 30 EAST	County EDDY	
Actual Footage Location of Well: 1155 feet from the NORTH line and 330 feet from the WEST line					
Ground level Elev. 3478		Producing Formation Grayburg		Pool Shugart Grayburg	Dedicated Acreage: 40 Acres

1. Outline the acreage dedicated to the subject well by colored pencil or hatchure marks on the plat below.

2. If more than one lease is dedicated to the well, outline each and identify the ownership thereof (both as to working interest and royalty).

3. If more than one lease of different ownership is dedicated to the well, have the interest of all owners been consolidated by communitization, unitization, force-pooling, etc.?

☐ Yes

☒ No

If answer is "yes" type of consolidation

If answer is "no" list the owners and tract descriptions which have actually been consolidated. (Use reverse side of this form if necessary.)

No allowable will be assigned to the well until all interests have been consolidated (by communitization, unitization, forced-pooling, or otherwise) or until a non-standard unit, eliminating such interest, has been approved by the Division.

OPERATOR CERTIFICATION

I hereby certify that the information contained herein is true and complete to the best of my knowledge and belief.

Signature

Printed Name

Ken Beardemphl

Position

Landman

Company

YATES PETROLEUM CORP.

Date

7/22/93

SURVEYOR CERTIFICATION

I hereby certify that the well location shown on this plat was plotted from field notes or actual surveys made by me or under my supervision, and that the same is true and correct to the best of my knowledge and belief.

Date Surveyed

6/01/93

Signature & Seal of  
Professional Surveyor

Certificate No.

3840

1155		330	
LC-028990			

0 330 660 990 1320 1650 1980 2310 2640 2000 1500 1000 500 0