

# Merrion Oil & Gas Corporation

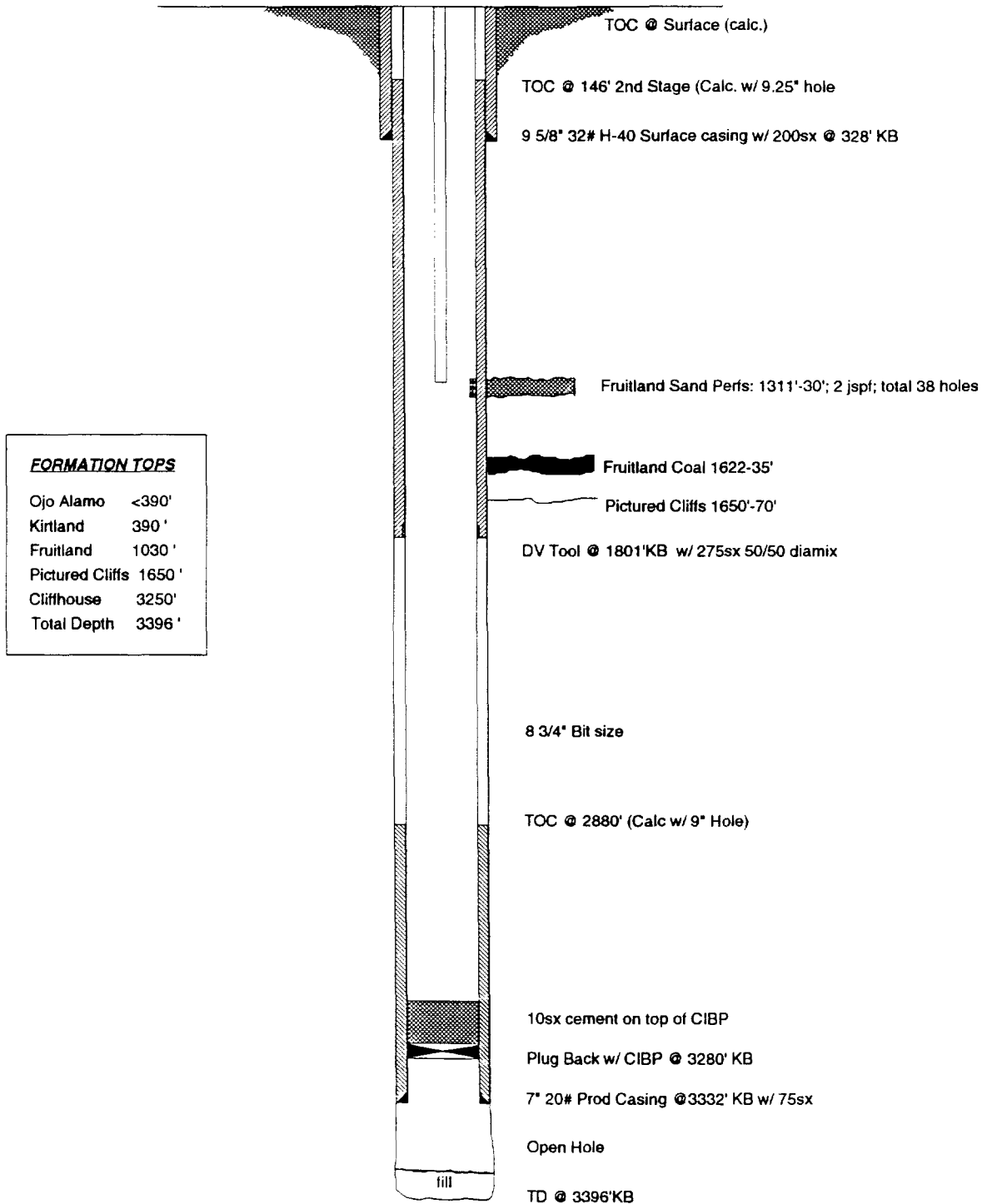
## WELLBORE SCHEMATIC

### OSBORN NO. 1

#### Post Recompletion Wellbore Configuration

LOCATION: 790' fst & 900' fwl  
Sec 22, T30N, R12W  
San Juan, New Mexico

Elevation: 5491' GR  
5503' RKB



8/20/93

NMOCD Examiner Hearing  
August 26, 1993  
Application of Merrion Oil & Gas  
Case #: 10801  
Exhibit # 6