

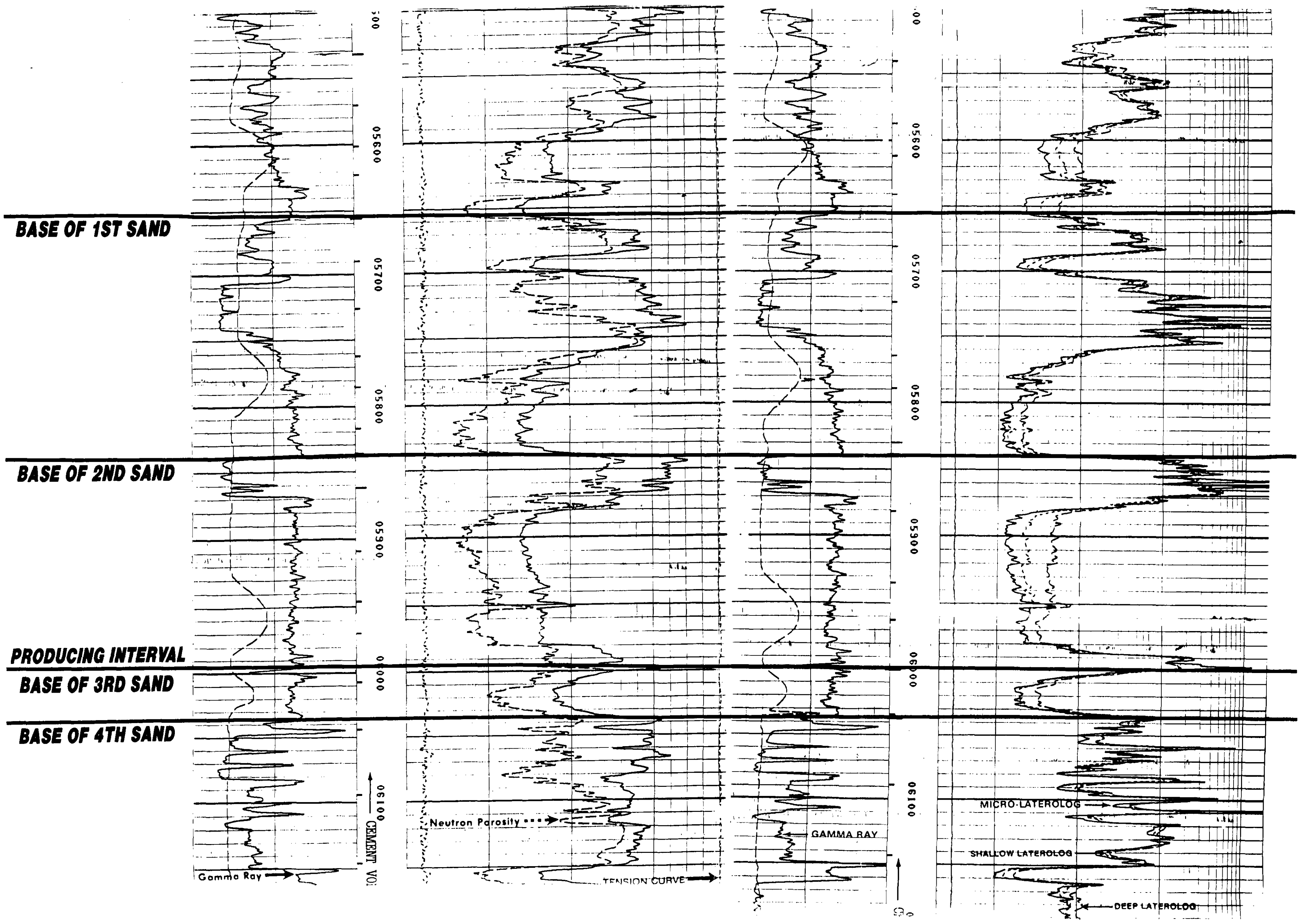
TYPE LOG

ARMSTRONG ENERGY CORP.

Mobil Lea State #2

Sec. 2, T-20-S, R-34-E

1800' FSL & 990' FWL



BEFORE THE
OIL CONSERVATION DIVISION
Santa Fe, New Mexico
Case No. 10925 Exhibit No. 1

Submitted by: Armstrong Energy Corporation

Hearing Date: March 3, 1994