

BEFORE THE
OIL CONSERVATION DIVISION
Santa Fe, New Mexico
Case No. 10925 Exhibit No. 5

Submitted by: Armstrong Energy Corporation

Hearing Date: March 3, 1994

ARMSTRONG ENERGY CORP.

MOBIL LEA STATE #1

LEA COUNTY, NEW MEXICO

N.E. LEA DELAWARE POOL

STRUCTURE MAP -
TOP OF PRODUCING INTERVAL
(CHERRY CANYON)

M. BOLING

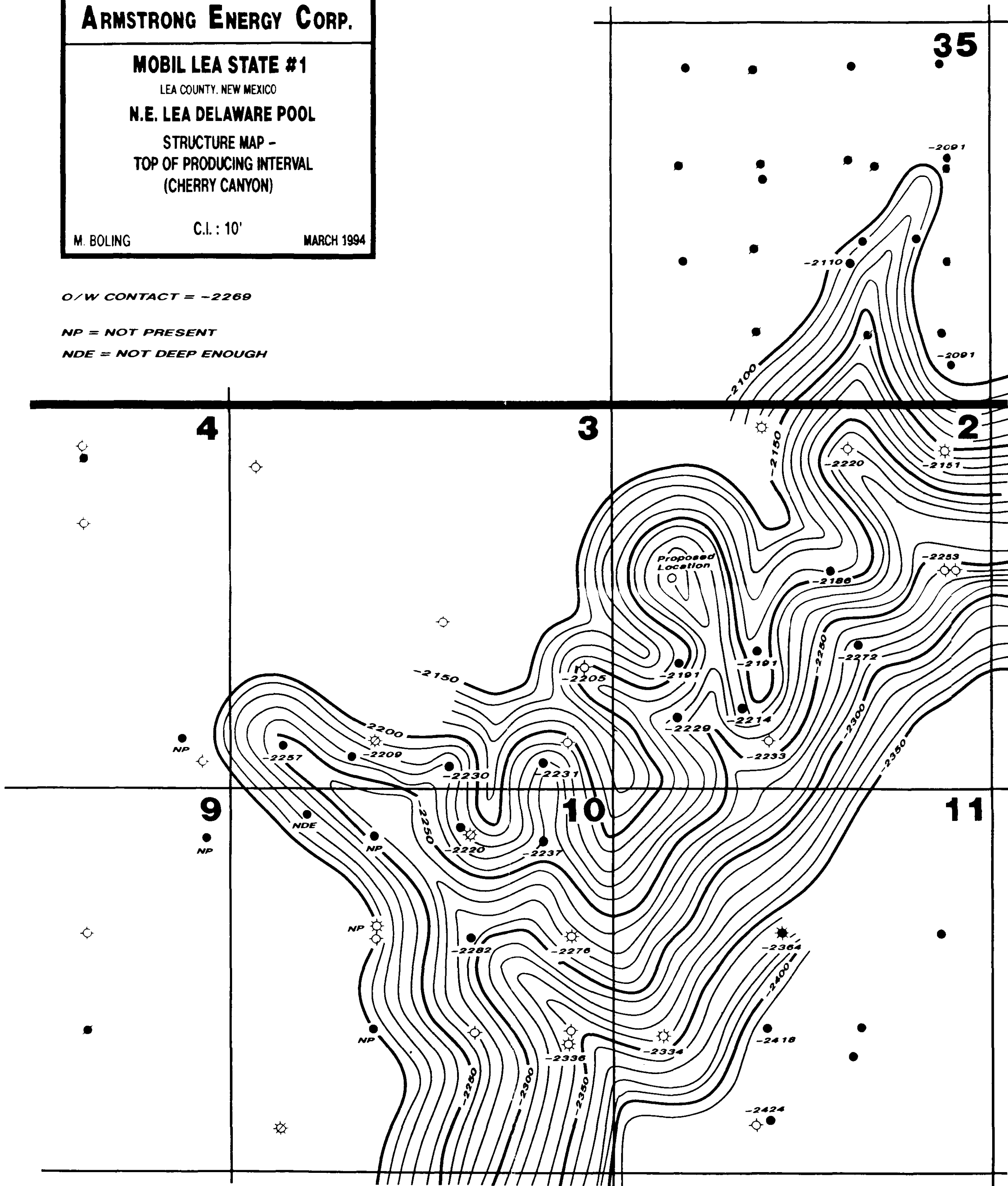
C.I.: 10'

MARCH 1994

O/W CONTACT = -2269

NP = NOT PRESENT

NDE = NOT DEEP ENOUGH



R - 34 - E