

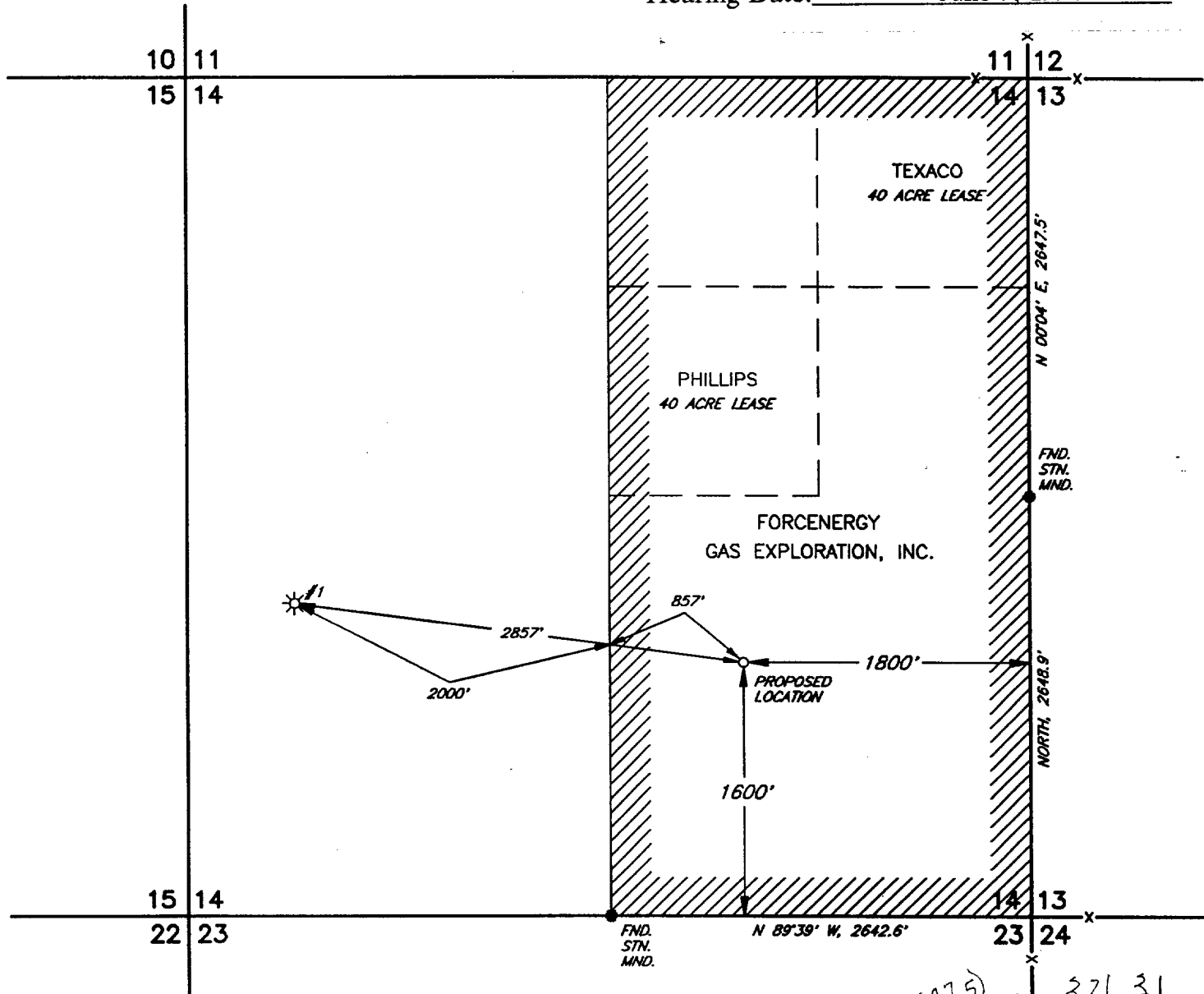
DRAWING SHOWING PROPOSED LOCATION & LEASE
IN E 1/2 OF SECTION 14, T-17-S, R-35-E,
N.M.P.M. LEA COUNTY, NEW MEXICO

BEFORE THE
OIL CONSERVATION DIVISION
Santa Fe, New Mexico

Case No. 10992 Exhibit No. 1

Submitted by: Forcenergy Gas Exploration, Inc.

Hearing Date: June 9, 1994



				FORCENERGY GAS EXPLORATION, INC.		SCALE: 1" = 1000'	
						DATE: MAY 19, 1994	
NO.	REVISION	DATE	BY			JOB NO.: 33409	
SURVEYED BY: R.J.O.				SURVEYING AND MAPPING BY		96 SW	
DRAWN BY: C.L.S.				TOPOGRAPHIC LAND SURVEYORS		SHEET : 1 OF 1	
APPROVED BY: V.L.B.				MIDLAND, TEXAS			