

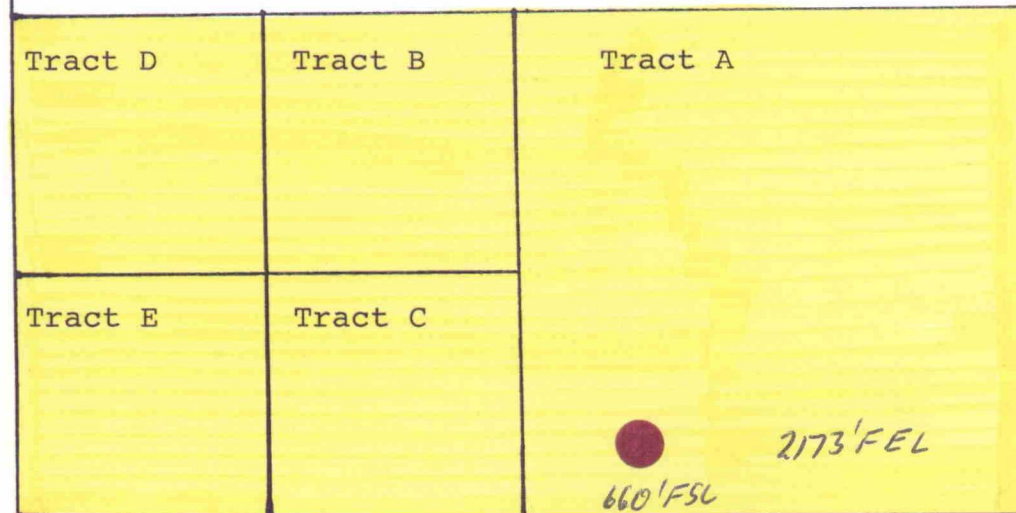
BEFORE THE
OIL CONSERVATION DIVISION
Case No. 11010 Exhibit No. _____
Submitted By:
Nearburg Exploration Company
Hearing Date: June 23, 1994

Eddy County, New Mexico

T-19-S, R-25-E

22

B&B #2 well 2173' FEL and 660' FSL
of Section 22, T-19-S, R-25-E



TRACT "A"	TRACT "B"	TRACT "C"	TRACT "D"	TRACT "E"
NEC 100%	NEC 91.229%	NEC 88.625%	NEC 25%	NEC 83.33%
	James T. Jennings 4.688%	James T. Jennings 9.375%	Panhandle Royalty Co. 37.5%	Roy G. Barton 16.67%
	Tierra Oil Company 2.000%	Tierra Oil Company 2.000%	Kerr-McGee Corporation 6.25%	
	Yates Petroleum Corp. 1.456%		Yates Petroleum Corp. 21.875%	
	Yates Drilling Company .209%		Yates Drilling Company 3.125%	
	Abo Petroleum Corporation .209%		Abo Petroleum Corporation 3.125%	
	Myco Industries, Inc. .209%		Myco Industries, Inc. 3.125%	
100%	100%	100%	100%	100%

S/2 Section 22 Spacing Unit Interest

NEC	86.023%
James T. Jennings	1.757%
Tierra Oil Company	.500%
Roy G. Barton	2.084%
Kerr-McGee Corporation	.781%
Panhandle Royalty Corporation	4.688%
Yates Petroleum Corporation	2.916%
Yates Drilling Company	.417%
Abo Petroleum Corporation	.417%
Myco Industries, Inc.	.417%
Total	100%

7.205% = representative
92.795%

BEFORE THE
OIL CONSERVATION DIVISION
Case No. 11010 Exhibit No. 2
Submitted By:
Nearburg Exploration Company
Hearing Date: June 23, 1994