

9752

S J Unit 32-7

PALMER

26.24

24.70

23.18

21.64

20.07

18.43

16.81

15.17

PALMER

S J Unit 32-7

3

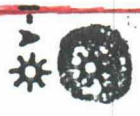
320



Quinora Petroleum Inc.  
Federal well no. 3B  
1190 FSL - 800' FCEL  
Spud: 8/22/77  
Blk. Minerals  
Completion



Quinora Petroleum Inc.  
Federal well no. 4  
1124 FSL - 564' FCEL  
Spud: 1/22/78  
South Los Pinos  
Fruitland P.C.  
Pool Completion



320

2



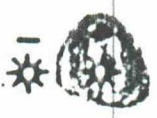
State

Quinora Petroleum Inc.  
Federal well no. 2  
1620 FSL - 1850' FCEL  
Spud: 7/16/77  
Blanca Minerals  
Completion



Quinora Petroleum Inc.  
Federal well no. 3  
1850 FSL - 1640' FCEL  
Spud: 3/27/78  
South Los Pinos  
Fruitland P.C.  
Pool Completion

203 43-A



205 64-A



N. E. Blanco Unit

N. E. Blanco Unit

- Pull R-5364  
- Pull South  
- Pull Fruitland P.C.  
- Pull Pool 200

(m) The vertical limits of the Jasis Canyon-Fruitland Pool in San Juan County, New Mexico, are hereby contracted to include only the sandstone interval of the Fruitland formation and said pool is hereby redesignated as the Jasis Canyon-Fruitland Sand Pool.

(n) The vertical limits of the Kutz-Fruitland Pool in San Juan County, New Mexico, are hereby contracted to include only the sandstone interval of the Fruitland formation and said pool is hereby redesignated as the Kutz-Fruitland Sand Pool.

(o) The vertical limits of the West Kutz-Fruitland Pool in San Juan County, New Mexico, are hereby contracted to include only the sandstone interval of the Fruitland formation and said pool is hereby redesignated as the West Kutz-Fruitland Sand Pool.

(p) The vertical limits of the La Jara-Fruitland Pool in Rio Arriba County, New Mexico, are hereby contracted to include only the sandstone interval of the Fruitland formation and said pool is hereby redesignated as the La Jara-Fruitland Sand Pool.

(q) The vertical limits of the North Los Pinos-Fruitland Pool in San Juan County, New Mexico, are hereby contracted to include only the sandstone interval of the Fruitland formation and said pool is hereby redesignated as the North Los Pinos-Fruitland Sand Pool.

\* (r) The vertical limits of the South Los Pinos Fruitland-Pictured Cliffs Pool in San Juan County, New Mexico, are hereby contracted to include only the sandstone interval of the Fruitland formation and said pool is hereby redesignated as the South Los Pinos Fruitland Sand-Pictured Cliffs Pool.

(s) The proposed contraction of the vertical limits of the Mt. Nebo-Fruitland Pool in San Juan County, New Mexico, is hereby dismissed.

(t) The vertical limits of the Ojo Fruitland-Pictured Cliffs Pool in San Juan County, New Mexico, are hereby contracted to include only the sandstone interval of the Fruitland formation and said pool is hereby redesignated as the Ojo Fruitland Sand-Pictured Cliffs Pool.

(e) The vertical limits of the Cottonwood-Fruitland Pool in Rio Arriba County, New Mexico, are hereby contracted to include only the sandstone interval of the Fruitland formation and said pool is hereby redesignated as the Cottonwood-Fruitland Sand Pool.

(f) The vertical limits of the Crouch Mesa-Fruitland Pool in San Juan County, New Mexico, are hereby contracted to include only the sandstone interval of the Fruitland formation and said pool is hereby redesignated as the Crouch Mesa-Fruitland Sand Pool.

(g) The vertical limits of the Farmer-Fruitland Pool in San Juan County, New Mexico, are hereby contracted to include only the sandstone interval of the Fruitland formation and said pool is hereby redesignated as the Farmer-Fruitland Sand Pool.

(h) The vertical limits of the Flora Vista-Fruitland Pool in San Juan County, New Mexico, are hereby contracted to include only the sandstone interval of the Fruitland formation and said pool is hereby redesignated as the Flora Vista-Fruitland Sand Pool.

(i) The vertical limits of the Gallegos-Fruitland Pool in San Juan County, New Mexico, are hereby contracted to include only the sandstone interval of the Fruitland formation and said pool is hereby redesignated as the Gallegos-Fruitland Sand Pool.

(j) The vertical limits of the South Gallegos Fruitland-Pictured Cliffs Pool in San Juan County, New Mexico, are hereby contracted to include only the sandstone interval of the Fruitland formation and said pool is hereby redesignated as the South Gallegos Fruitland Sand-Pictured Cliffs Pool.

(k) The vertical limits of the Glades-Fruitland Pool in San Juan County, New Mexico, are hereby contracted to include only the sandstone interval of the Fruitland formation and said pool is hereby redesignated as the Glades-Fruitland Sand Pool.

(l) The vertical limits of the Harper Hill Fruitland-Pictured Cliffs Pool in San Juan County, New Mexico, are hereby contracted to include only the sandstone interval of the Fruitland formation and said pool is hereby redesignated as the Harper Hill Fruitland Sand-Pictured Cliffs Pool.

(4) The proposed contraction of the vertical limits of the Mt. Nebo-Fruitland Pool in San Juan County, New Mexico, should be dismissed inasmuch as Division Order No. R-7588-B approved said contraction.

(5) There is need for the contraction of the vertical limits and the redesignation of the Aztec-Fruitland Pool, the North Aztec-Fruitland Pool, the Blanco-Fruitland Pool, the Conner-Fruitland Pool, the Crouch Mesa-Fruitland Pool, the Farmer-Fruitland Pool, the Flora Vista-Fruitland Pool, the Gallegos-Fruitland Pool, the South Gallegos Fruitland-Pictured Cliffs Pool, the Glades-Fruitland Pool, the Harper Hill Fruitland-Pictured Cliffs Pool, the Jasis Canyon-Fruitland Pool, the Kutz-Fruitland Pool, the West Kutz-Fruitland Pool, the North Los Pinos-Fruitland Pool, the South Los Pinos Fruitland-Pictured Cliffs Pool, the Ojo Fruitland-Pictured Cliffs Pool, the Pinon-Fruitland Pool, the North Pinon-Fruitland Pool, the Pump Mesa-Fruitland Pool, the Sedro Canyon-Fruitland Pool, the Twin Mounds Fruitland-Pictured Cliffs Pool, and the WAW Fruitland-Pictured Cliffs Pool, all in San Juan County, New Mexico, and the Cottonwood-Fruitland Pool and the La Jara-Fruitland Pool, both in Rio Arriba County, New Mexico, to include only the sandstone intervals.

IT IS THEREFORE ORDERED THAT:

(a) The vertical limits of the Aztec-Fruitland Pool in San Juan County, New Mexico, are hereby contracted to include only the sandstone interval of the Fruitland formation and said pool is hereby redesignated as the Aztec-Fruitland Sand Pool.

(b) The vertical limits of the North Aztec-Fruitland Pool in San Juan County, New Mexico, are hereby contracted to include only the sandstone interval of the Fruitland formation and said pool is hereby redesignated as the North Aztec-Fruitland Sand Pool.

(c) The vertical limits of the Blanco-Fruitland Pool in San Juan County, New Mexico, are hereby contracted to include only the sandstone interval of the Fruitland formation and said pool is hereby redesignated as the Blanco-Fruitland Sand Pool.

(d) The vertical limits of the Conner-Fruitland Pool in San Juan County, New Mexico, are hereby contracted to include only the sandstone interval of the Fruitland formation and said pool is hereby redesignated as the Conner-Fruitland Sand Pool.

STATE OF NEW MEXICO  
ENERGY, MINERALS AND NATURAL RESOURCES DEPARTMENT  
OIL CONSERVATION DIVISION

IN THE MATTER OF THE HEARING  
CALLED BY THE OIL CONSERVATION  
DIVISION FOR THE PURPOSE OF  
CONSIDERING:

CASE NO. 9421  
Order No. R-8769

IN THE MATTER OF THE HEARING  
CALLED BY THE OIL CONSERVATION  
DIVISION ON ITS OWN MOTION FOR  
AN ORDER CONTRACTING THE VERTICAL  
LIMITS AND REDESIGNATING CERTAIN  
POOLS IN SAN JUAN AND RIO ARriba  
COUNTIES, NEW MEXICO.

ORDER OF THE DIVISION

BY THE DIVISION:

This cause came on for hearing at 8:30 a.m. on July 6, 1988, at Farmington, New Mexico, before Examiner David R. Catanach.

NOW, on this 17th day of October, 1988, the Division Director, having considered the testimony, the record, and the recommendations of the Examiner, and being fully advised in the premises,

FINDS THAT:

(1) Due public notice having been given as required by law, the Division has jurisdiction of this cause and the subject matter thereof.

(2) Division Case Nos. 9421 and 9420 were consolidated at the time of the hearing for the purpose of testimony.

(3) By Order No. R-8768, entered in companion Case No. 9420, the Division has created and defined the Basin-Fruitland Coal Gas Pool with vertical limits comprising all coal seams within the equivalent of the stratigraphic interval from a depth of approximately 2450 feet to 2880 feet as shown on the Gamma Ray/Bulk Density Log from Amoco Production Company's Schneider Gas Com "B" Well No. 1 located 1110 feet from the South line and 1185 feet from the West line of Section 28, Township 32 North, Range 10 West, NMPM, San Juan County, New Mexico.

(u) The vertical limits of the Pinon-Fruitland Pool in San Juan County, New Mexico, are hereby contracted to include only the sandstone interval of the Fruitland formation and said pool is hereby redesignated as the Pinon-Fruitland Sand Pool.

(v) The vertical limits of the North Pinon-Fruitland Pool in San Juan County, New Mexico, are hereby contracted to include only the sandstone interval of the Fruitland formation and said pool is hereby redesignated as the North Pinon-Fruitland Sand Pool.

(w) The vertical limits of the Pump Mesa-Fruitland Pool in San Juan County, New Mexico, are hereby contracted to include only the sandstone interval of the Fruitland formation and said pool is hereby redesignated as the Pump Mesa-Fruitland Sand Pool.

(x) The vertical limits of the Sedro Canyon-Fruitland Pool in San Juan County, New Mexico, are hereby contracted to include only the sandstone interval of the Fruitland formation and said pool is hereby redesignated as the Sedro Canyon-Fruitland Sand Pool.

(y) The vertical limits of the Twin Mounds Fruitland-Pictured Cliffs Pool in San Juan County, New Mexico, are hereby contracted to include only the sandstone interval of the Fruitland formation and said pool is hereby redesignated as the Twin Mounds Fruitland Sand-Pictured Cliffs Pool.

(z) The vertical limits of the WAW Fruitland-Pictured Cliffs Pool in San Juan County, New Mexico, are hereby contracted to include only the sandstone interval of the Fruitland formation and said pool is hereby redesignated as the WAW Fruitland Sand-Pictured Cliffs Pool.

IT IS FURTHER ORDERED THAT:

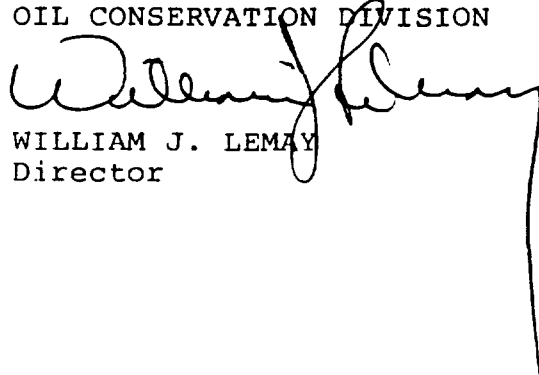
(1) The effective date of this order and all contractions of vertical limits and redesignations included herein shall be November 1, 1988.

-6-

Case No. 9421  
Order No. R-8769

DONE at Santa Fe, New Mexico, on the day and year  
hereinabove designated.

STATE OF NEW MEXICO  
OIL CONSERVATION DIVISION

  
WILLIAM J. LEMAY  
Director

S E A L

fd/

STATE OF NEW MEXICO  
ENERGY, MINERALS AND NATURAL RESOURCES DEPARTMENT  
OIL CONSERVATION DIVISION

CASE NO. 9421  
ORDER NO. R-8769-A

IN THE MATTER OF THE HEARING CALLED  
BY THE OIL CONSERVATION DIVISION ON  
ITS OWN MOTION FOR AN ORDER CONTRACTING  
THE VERTICAL LIMITS AND REDESIGNATING  
CERTAIN POOLS IN SAN JUAN AND RIO ARriba  
COUNTIES, NEW MEXICO.

NUNC PRO TUNC ORDER

BY THE DIVISION:

It appearing to the Division that Order No. R-8769 dated October 17, 1988,  
does not correctly state the intended order of the Division,

IT IS THEREFORE ORDERED THAT:

(1) Decretory Paragraph (j) on page 3 of said Order No. R-8769 be and  
the same is hereby amended to read as follows:

"(j) The vertical limits of the South Gallegos Fruitland-Pictured  
Cliffs Pool in San Juan County, New Mexico, are hereby contracted  
to include only the Pictured Cliffs formation and the sandstone  
interval of the Fruitland formation and said pool is hereby  
redesignated as the South Gallegos Fruitland Sand-Pictured Cliffs  
Pool."

(2) Decretory Paragraph (l) on page 3 of said Order No. R-8769 be and  
the same is hereby amended to read as follows:

"(l) The vertical limits of the Harper Hill Fruitland-Pictured Cliffs  
Pool in San Juan County, New Mexico, are hereby contracted to  
include only the Pictured Cliffs formation and the sandstone interval  
of the Fruitland formation and said pool is hereby redesignated as the  
Harper Hill Fruitland Sand-Pictured Cliffs Pool."



Case No. 9421  
Order No. R-8769-A  
Page No. 2

(3) Decretory Paragraph (r) on page 4 of said Order No. R-8769 be and the same is hereby amended to read as follows:

"(r) The vertical limits of the South Los Pinos Fruitland-Pictured Cliffs Pool in San Juan County, New Mexico, are hereby contracted to include only the Pictured Cliffs formation and the sandstone interval of the Fruitland formation and said pool is hereby redesignated as the South Los Pinos Fruitland Sand-Pictured Cliffs Pool."

(4) Decretory Paragraph (t) on page 4 of said Order No. R-8769 be and the same is hereby amended to read as follows:

"(t) The vertical limits of the Ojo Fruitland-Pictured Cliffs Pool in San Juan County, New Mexico, are hereby contracted to include only the Pictured Cliffs formation and the sandstone interval of the Fruitland formation and said pool is hereby redesignated as the Ojo Fruitland Sand-Pictured Cliffs Pool."

(5) Decretory Paragraph (y) on page 5 of said Order No. R-8769 be and the same is hereby amended to read as follows:

"(y) The vertical limits of the Twin Mounds Fruitland- Pictured Cliffs Pool in San Juan County, New Mexico, are hereby contracted to include only the Pictured Cliffs formation and the sandstone interval of the Fruitland formation and said pool is hereby redesignated as the Twin Mounds Fruitland Sand-Pictured Cliffs Pool."

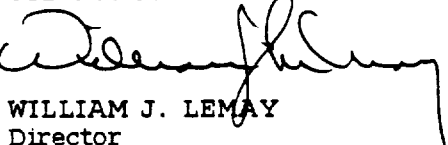
(6) Decretory Paragraph (z) on page 5 of said Order No. R-8769 be and the same is hereby amended to read as follows:

"(z) The vertical limits of the WAW Fruitland-Pictured Cliffs Pool in San Juan County, New Mexico, are hereby contracted to include only the Pictured Cliffs formation and the sandstone interval of the Fruitland formation and said pool is hereby redesignated as the WAW Fruitland Sand-Pictured Cliffs Pool."

(7) The corrections set forth in this order be entered nunc pro tunc as of October 17, 1988.

(8) DONE at Santa Fe, New Mexico, on this 11th day of April, 1989.

STATE OF NEW MEXICO  
OIL CONSERVATION DIVISION

  
WILLIAM J. LEMAY  
Director

S E A L



Case No. 5835  
Order No. R-5364

800 feet from the North line and 800 feet from the West line of Section 3; and

800 feet from the South line and 800 feet from the East line of Section 4.

IT IS THEREFORE ORDERED:

(1) That the following non-standard gas proration units in Township 31 North, Range 7 West, NMPM, San Juan County, New Mexico, are hereby approved:

- 975
- (a) a 310.48-acre Basin-Dakota unit comprising Lots 5, 6, 7, and 8 and the E/2 SW/4 and the SE/4 of Section 2;
- (b) a 323.39-acre Blanco Mesaverde and Basin-Dakota unit comprising Lots 5, 6, 7, and 8 and the W/2 SW/4 of Section 3 and Lot 5 and the E/2 SE/4 and SW/4 SE/4 of Section 4;
- 9752 \* (c) a 320-acre Blanco Mesaverde and Basin-Dakota unit comprising the W/2 SW/4 of Section 2, the E/2 SE/4 of Section 3, and the NE/4 of Section 10;
- 9753 (d) a 320-acre Blanco Mesaverde and Basin-Dakota unit comprising the W/2 SE/4 and E/2 SW/4 of Section 3 and the NW/4 of Section 10;
- (e) a 150.48-acre Fruitland and Pictured Cliffs unit comprising Lots 5, 6, 7, and 8 and the E/2 SW/4 of Section 2;
- (f) a 175.76-acre Fruitland and Pictured Cliffs unit comprising Lots 5, 6, 7, and 8 and W/2 SW/4 of Section 3;
- (g) a 160-acre Fruitland and Pictured Cliffs unit comprising the W/2 SW/4 of Section 2 and the E/2 SE/4 of Section 3;
- (h) a 160-acre Fruitland and Pictured Cliffs unit comprising the W/2 SE/4 and E/2 SW/4 of Section 3; and
- (i) a 147.63-acre Fruitland and Pictured Cliffs unit comprising Lot 5 and the SW/4 SE/4 and E/2 SE/4 of Section 4.

a 320-acre Blanco Mesaverde and Basin-Dakota unit comprising the W/2 SE/4 and E/2 SW/4 of Section 3 and the NW/4 of Section 10.

(7) That the re-alignment of the subject lands to form the 320-acre units described in Finding No. (6) above will necessitate the re-alignment of the lands proposed to be dedicated to the Fruitland and Pictured Cliffs proration units described in Findings Nos. (2)(g) and (2)(h) above.

(8) That the following-described non-standard proration units should be approved in lieu of the units described in Findings Nos. (2)(g) and (2)(h) above:

a 160-acre Fruitland and Pictured Cliffs unit comprising the W/2 SW/4 of Section 2 and the E/2 SE/4 of Section 3; and

a 160-acre Fruitland and Pictured Cliffs unit comprising the E/2 SW/4 and W/2 SE/4 of Section 3.

(9) That the non-standard proration units described in Findings Nos. (2)(a), (2)(b), (2)(e), (2)(f), and (2)(i) and Findings Nos. (6) and (8) above are in the interest of conservation, will prevent waste, and will not impair correlative rights, and should be approved.

(10) That the above non-standard proration units will be developed by the drilling of certain wells to the Fruitland, Pictured Cliffs, Mesaverde, and Dakota formations, said wells to be located at orthodox and unorthodox locations.

(11) That among said locations will be the following unorthodox locations in Township 31 North, Range 7 West, which will not cause waste nor impair correlative rights, and should be approved:

800 feet from the South line and 1675 feet from the West line of Section 2;

1550 feet from the South line and 800 feet from the East line of Section 3;

800 feet from the South line and 1850 feet from the West line of Section 3;

- (d) a 320-acre Blanco Mesaverde and Basin-Dakota unit comprising the W/2 SW/4 of Section 2, N/2 SE/4 of Section 3, and NE/4 of Section 10;
- (e) a 150.48-acre Fruitland and Pictured Cliffs unit comprising Lots, 5, 6, 7, and 8 and the E/2 SW/4 of Section 2;
- (f) a 175.76-acre Fruitland and Pictured Cliffs unit comprising Lots 5, 6, 7, and 8 and W/2 SW/4 of Section 3;
- (g) a 160-acre Fruitland and Pictured Cliffs unit comprising the W/2 SW/4 of Section 2 and N/2 SE/4 of Section 3;
- (h) a 160-acre Fruitland and Pictured Cliffs unit comprising the E/2 SW/4 and S/2 SE/4 of Section 3; and
- (i) a 147.63-acre Fruitland and Pictured Cliffs unit comprising Lot 5 and the SW/4 SE/4 and E/2 SE/4 of Section 4.

(3) That the non-standard proration unit described in Finding No. (2)(d) above does not comprise wholly contiguous acreage, and to approve the dedication of non-contiguous lands would be contrary to long-established Commission policy and not in the public interest.

(4) That the aforesaid non-standard proration unit described in Finding No. (2)(d) above should be denied.

(5) That denial of said non-standard proration unit will necessitate a re-alignment of the lands originally proposed to be dedicated to said unit as well as the lands proposed to be dedicated to the non-standard unit described in Finding No. (2)(c) above.

(6) That the following-described non-standard proration units should be approved in lieu of the units described in Findings Nos. (2)(c) and (2)(d) above:

a 320-acre Blanco-Mesaverde and Basin Dakota unit comprising the W/2 SW/4 of Section 2, the E/2 SE/4 of Section 3, and the NE/4 of Section 10; and

BEFORE THE OIL CONSERVATION COMMISSION  
OF THE STATE OF NEW MEXICO

IN THE MATTER OF THE HEARING  
CALLED BY THE OIL CONSERVATION  
COMMISSION OF NEW MEXICO FOR  
THE PURPOSE OF CONSIDERING:

CASE NO. 5835  
Order No. R-5364

APPLICATION OF PALMER OIL COMPANY  
FOR NON-STANDARD PRORATION UNITS  
AND UNORTHODOX LOCATIONS, SAN JUAN  
COUNTY, NEW MEXICO.

ORDER OF THE COMMISSION

BY THE COMMISSION:

This cause came on for hearing at 9 a.m. on February 2, 1977,  
at Santa Fe, New Mexico, before Examiner Daniel S. Nutter.

NOW, on this 8th day of February, 1977, the Commission,  
a quorum being present, having considered the testimony, the  
record, and the recommendations of the Examiner, and being  
fully advised in the premises,

FINDS:

(1) That due public notice having been given as required by  
law, the Commission has jurisdiction of this cause and the  
subject matter thereof.

(2) That the applicant, Palmer Oil Company, seeks approval  
of the following non-standard proration units in Township 31  
North, Range 7 West, NMPM, San Juan County, New Mexico:

- (a) a 310.48-acre Basin-Dakota unit comprising  
Lots 5, 6, 7, and 8 and the E/2 SW/4 and  
SE/4 of Section 2;
- (b) a 323.39-acre Blanco-Mesaverde and Basin-Dakota  
unit comprising Lots 5, 6, 7, and 8 and W/2 SW/4  
of Section 3 and Lot 5 and the E/2 SE/4 and SW/4 SE/4  
of Section 4;
- (c) a 320-acre Blanco Mesaverde and Basin-Dakota  
unit comprising the E/2 SW/4 and S/2 SE/4 of  
Section 3 and NW/4 of Section 10; and

(2) That the following unorthodox gas well locations for the Fruitland, Pictured Cliffs, Mesaverde, and Dakota formations in Township 31 North, Range 7 West, NMPM, San Juan County, New Mexico, are hereby approved:

800 feet from the South line and 1675 feet from the West line of Section 2;

1550 feet from the South line and 800 feet from the East line of Section 3;

800 feet from the South line and 1850 feet from the West line of Section 3;

800 feet from the North line and 800 feet from the West line of Section 3; and

800 feet from the South line and 800 feet from the East line of Section 4.

(3) That the following non-standard gas proration units in Township 31 North, Range 7 West, NMPM, San Juan County, New Mexico, are hereby denied:

(a) a 320-acre Blanco Mesaverde and Basin-Dakota unit comprising the E/2 SW/4 and S/2 SE/4 of Section 3 and NW/4 of Section 10;

(b) a 320-acre Blanco Mesaverde and Basin-Dakota unit comprising the W/2 SW/4 of Section 2, N/2 SE/4 of Section 3, and NE/4 of Section 10;

(c) a 160-acre Fruitland and Pictured Cliffs unit comprising the W/2 SW/4 of Section 2 and the N/2 SE/4 of Section 3; and

(d) a 160-acre Fruitland and Pictured Cliffs unit comprising the E/2 SW/4 and S/2 SE/4 of Section 3.

(4) That jurisdiction of this cause is retained for the entry of such further orders as the Commission may deem necessary.


-6-

Case No. 5835

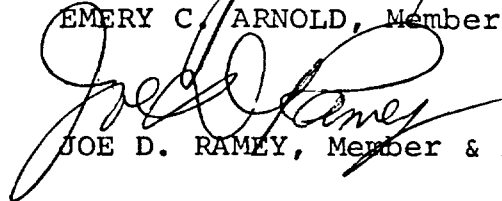
Order No. R-5364

DONE at Santa Fe, New Mexico, on the day and year  
hereinabove designated.

STATE OF NEW MEXICO  
OIL CONSERVATION COMMISSION

  
PHIL R. LUCERO, Chairman

  
EMERY C. ARNOLD, Member

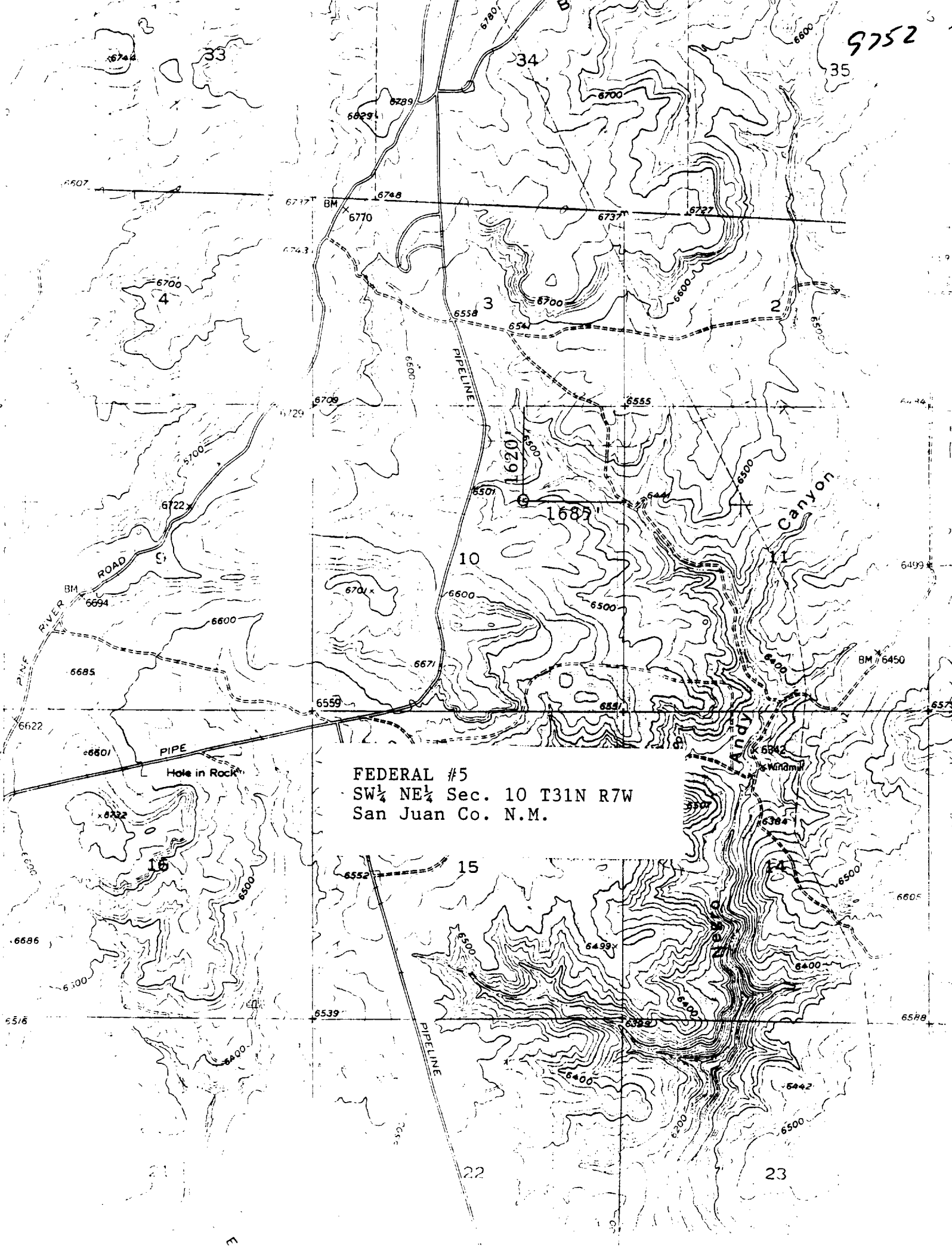
  
JOE D. RAMEY, Member & Secretary

S E A L

dr/



9752 4



FEDERAL #5  
SW  $\frac{1}{4}$  NE  $\frac{1}{4}$  Sec. 10 T31N R7W  
San Juan Co. N.M.