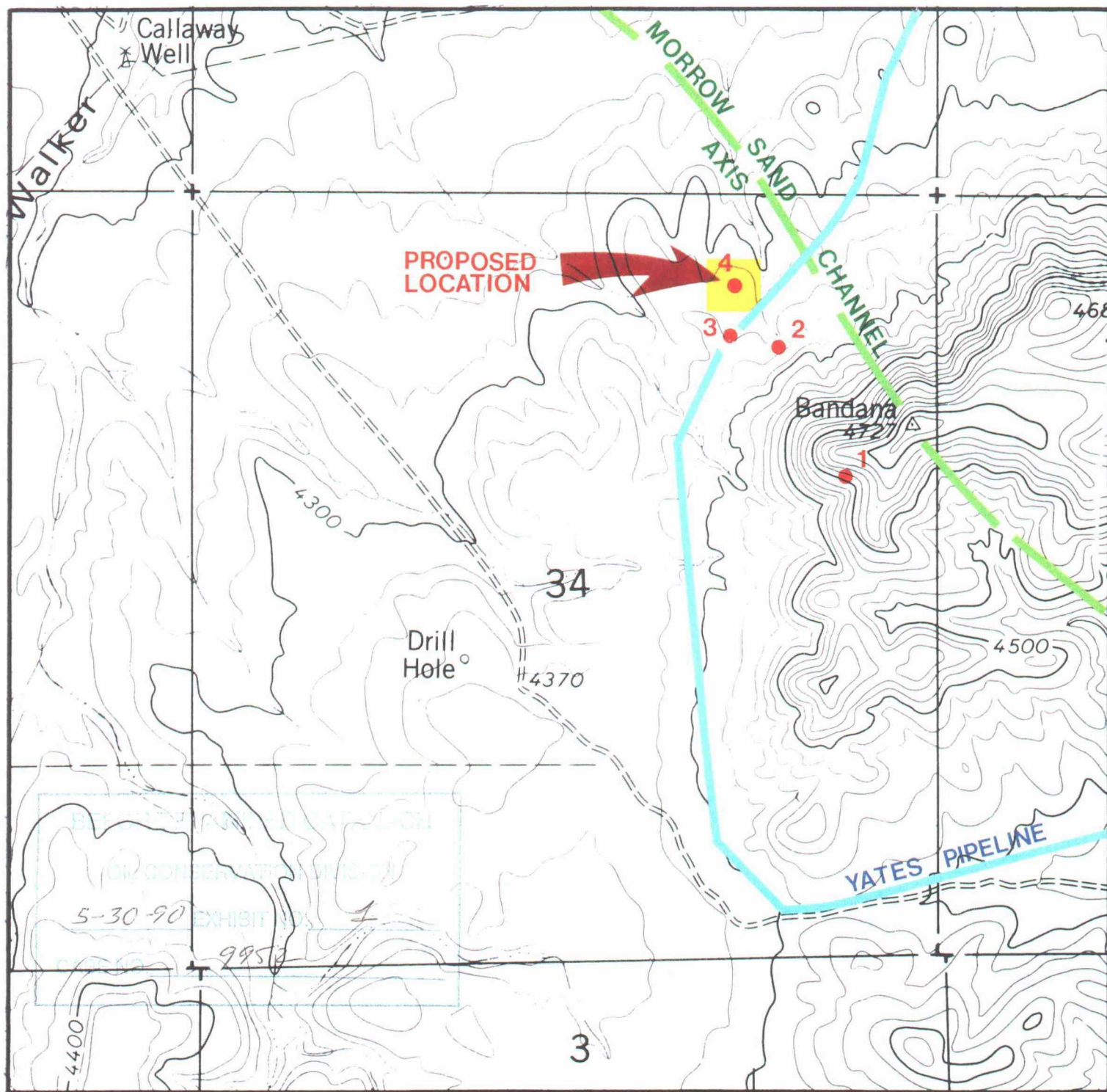


TOPOGRAPHIC MAP

SEC. 34-T23S-R23E

EDDY COUNTY, NEW MEXICO



1. ORTHODOX LOCATION (1980'FNL & 660'FEL)
2. UNORTHODOX LOCATION (1040'FNL & 1140'FEL)
PROPOSED TO MEET TOPOGRAPHIC AND
GEOLOGICAL REQUIREMENTS. REJECTED BLM
3. UNORTHODOX LOCATION (990'FNL & 1450'FEL)
SUGGESTED BY BLM. REJECTED BY OXY BECAUSE
OF PROXIMITY TO YATES ENERGY CORP. PIPELINE
4. UNORTHODOX LOCATION(660'FNL & 1450'FEL)
SECOND SUGGESTED LOCATION BY BLM AND
ACCEPTABLE TO SURFACE OWNER AND OXY USA INC.

SCALE 1":1000'