

## OIL CONSERVATION DIVISION

**P.O. Box 2088**

Santa Fe, New Mexico 87504-2088

## DISTRICTU

P.O. Box 1980, Hobbs, NM 88240

## DISTRICT II

P.O. Drawer DD, Artesia, NM 88210

### DISTRICT III

1000 Rio Brazos Rd., Aztec, NM 87410

## WELL LOCATION AND ACREAGE DEDICATION PLAT

**All Distances must be from the outer boundaries of the section**

Operator OXY USA, INC.		Lease Federal AK		Well No. 1
Unit Letter B	Section 34	Township 23 South	Range 23 East NMPM	County Eddy

Actual Footage Location of Well:

660 feet from the North line and 1450 feet from the East line

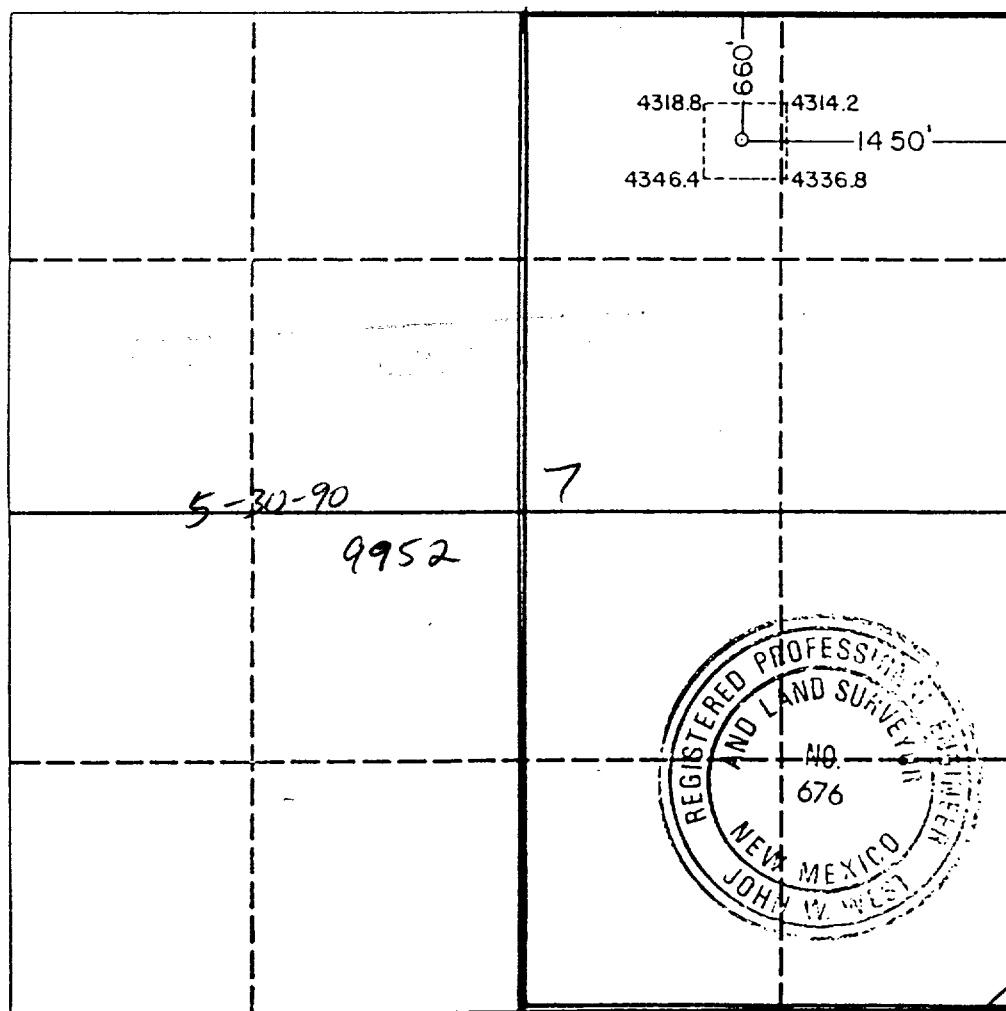
Ground level Elev. 4336.2	Producing Formation Morrow	Pool East Hess	Dedicated Acreage: 320 Acres
------------------------------	-------------------------------	-------------------	---------------------------------

1. Outline the acreage dedicated to the subject well by colored pencil or hatchure marks on the plat below.
2. If more than one lease is dedicated to the well, outline each and identify the ownership thereof (both as to working interest and royalty).
3. If more than one lease of different ownership is dedicated to the well, have the interest of all owners been consolidated by communitization, unitization, force-pooling, etc.?

☐ Yes ☐ No If answer is "yes" type of consolidation

If answer is "no" list the owners and tract descriptions which have actually been consolidated. (Use reverse side of this form if necessary.)

No allowable will be assigned to the well until all interests have been consolidated (by communitization, unitization, forced-pooling, or otherwise) or until a non-standard unit, eliminating such interest, has been approved by the Division.



### OPERATOR CERTIFICATION

I hereby certify that the information contained herein is true and complete to the best of my knowledge and belief.

Signature \_\_\_\_\_

l'.A. Vitrano

Printed Name \_\_\_\_\_

Operations Mgr. - Prod.

Position

COXY USA Inc.

Company

5/3/90

Date	
------	--

### SURVEYOR CERTIFICATION

I hereby certify that the well location shown on this plat was plotted from field notes of actual surveys made by me or under my supervision, and that the same is true and correct to the best of my knowledge and belief.

Date Surveyed \_\_\_\_\_

April 2, 1990

Signature & Seal of  
Professional Surveyor

Certificate No. JOHN W. WEST, 676  
RONALD J. EIDSON, 3239