



Chevron

BEFORE THE  
OIL CONSERVATION DIVISION  
Santa Fe, New Mexico

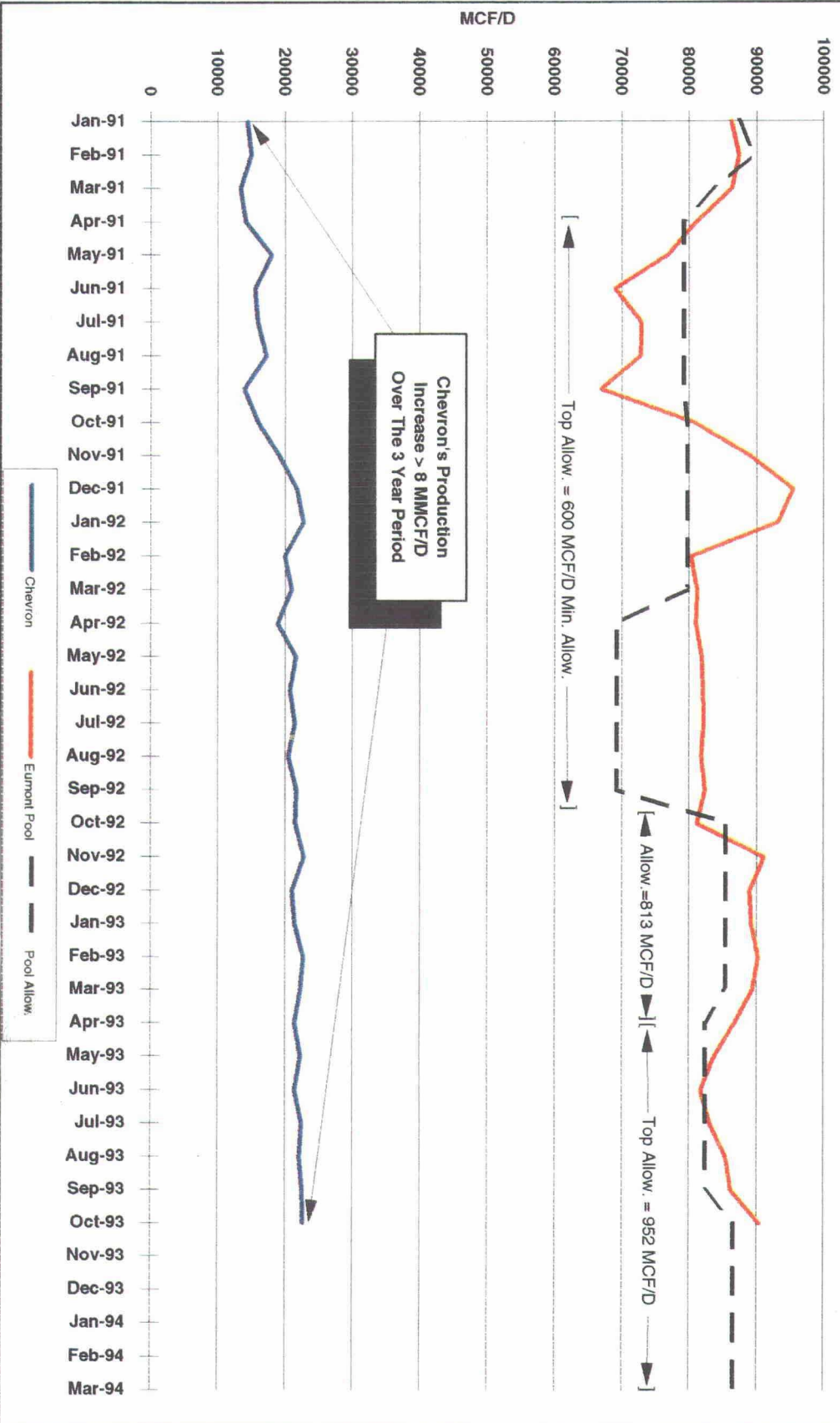
EUMONT (PRO GAS) POOL

Favorable Production Response  
With 600 MCF/D Minimum Allowable

Case No. 10036 (Reopened) Exhibit No. 1

Submitted by: Chevron U.S.A. Inc.

Hearing Date: February 17, 1994



*Chevron Exhibits 1 through 4  
Complete Set*

**SUMMARY OF CHEVRON'S  
WORKOVER AND DRILLING PROGRAMS  
FOR 1991, 1992 AND 1993  
EUMONT (PRO GAS) POOL**

**1991 WORKOVER & DRILLING PROGRAM (Consolidated)**

WORK = 16 Workovers & 9 New Drills  
COST = \$4,377 M  
IP = 11.6 MMscf/D  
Prod. (12/93) = 8.6 MMscf/D

**1992 WORKOVER & DRILLING PROGRAM (Consolidated)**

WORK = 10 Workovers & 3 New Drills  
COST = \$1,567 M  
IP = 5.3 MMscf/D  
Prod. (12/93) = 3.4 MMscf/D

**1993 WORKOVER & DRILLING PROGRAM (Consolidated)**

WORK = 8 Workovers & 3 New Drills  
COST = \$1,497 M  
IP = 6.2 MMscf/D  
Prod. (12/93) = 5.9 MMscf/D

BEFORE THE  
OIL CONSERVATION DIVISION  
Santa Fe, New Mexico

Case No. 10036 (Reopened) Exhibit No. 3

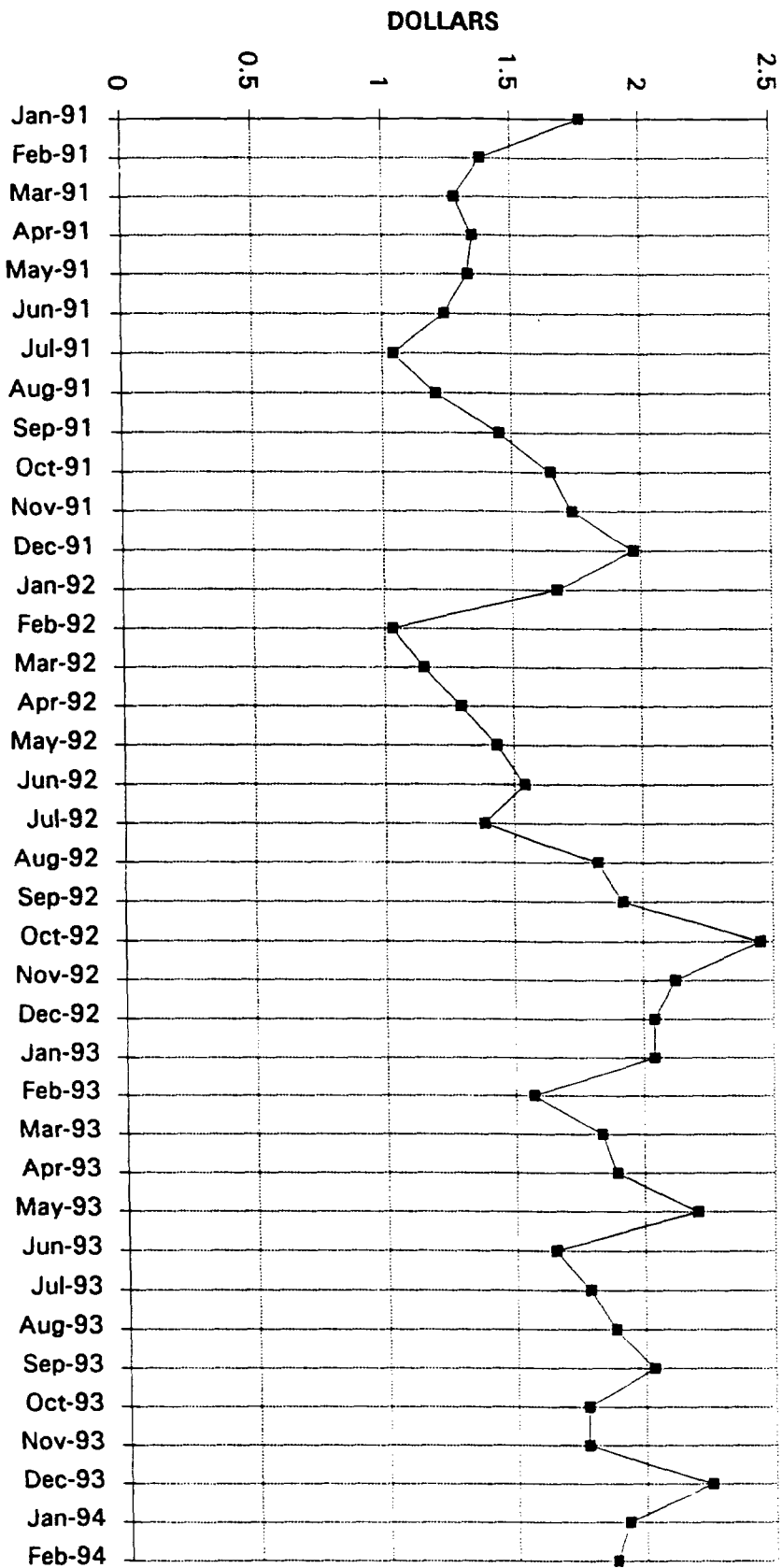
Submitted by: Chevron U.S.A. Inc.

Hearing Date: February 17, 1994



**Chevron U.S.A. Production Company**  
P.O. Box 1150, Midland, TX 79702

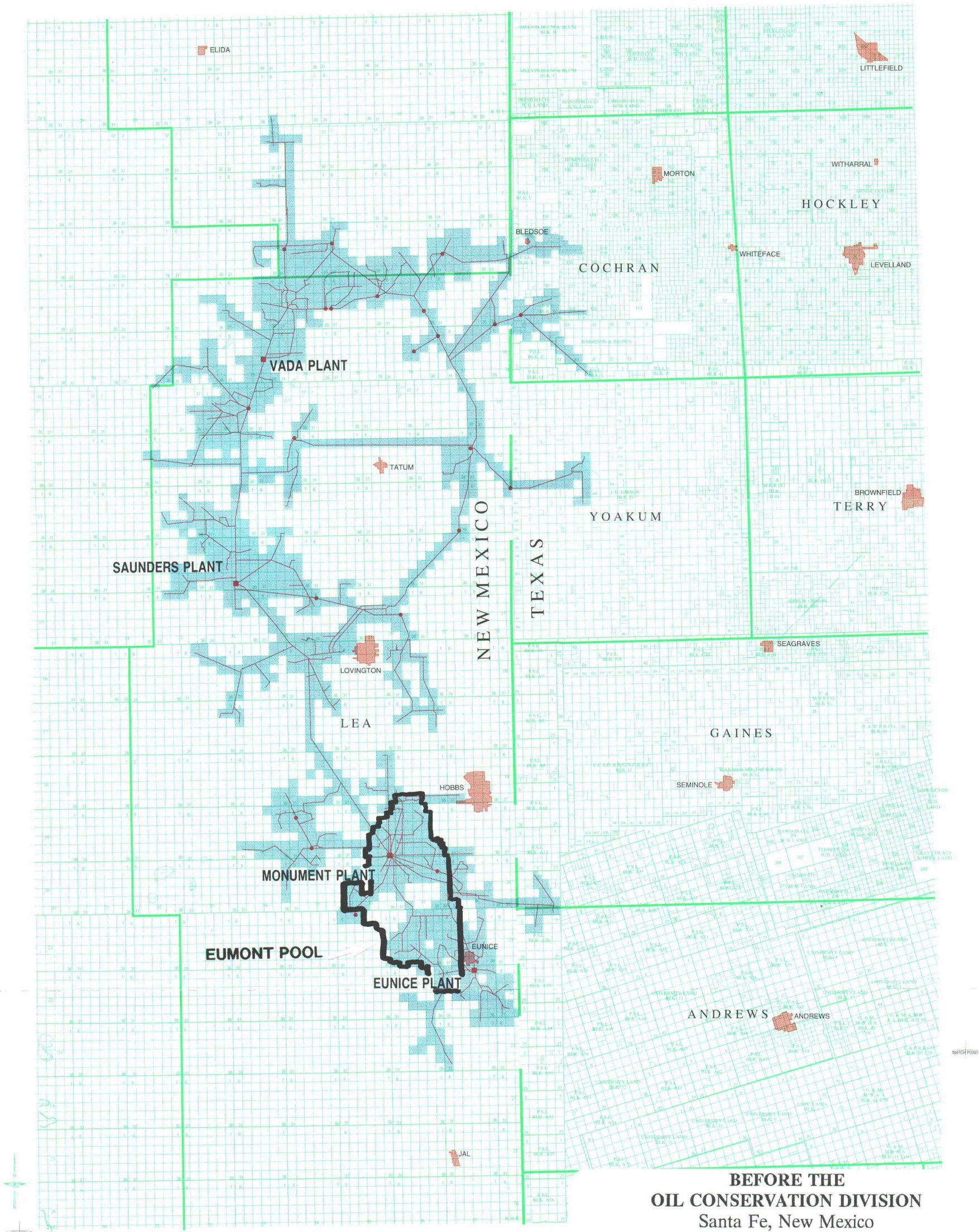
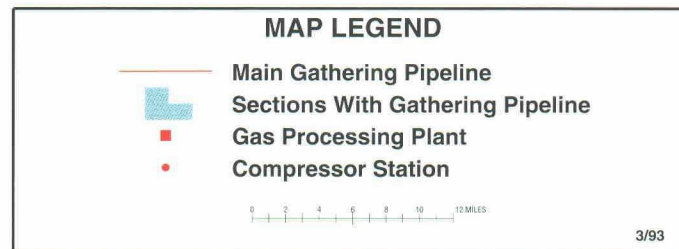
**SPOT GAS PRICE TO EPNG, PERMIAN BASIN**





## New Mexico Gas Gathering & Gas Processing Facilities

Warren Petroleum Company P.O.Box 1589 Tulsa Ok 74102



Case No. 10036 (Reopened) Exhibit No. 4

Submitted by: Chevron U.S.A. Inc.

Hearing Date: February 17, 1994



**OIL CONSERVATION DIVISION**  
**Santa Fe, New Mexico**

Case No. 10036 (Reopened) Exhibit No. 1

Submitted by: Texaco Inc.

Hearing Date: February 17, 1994

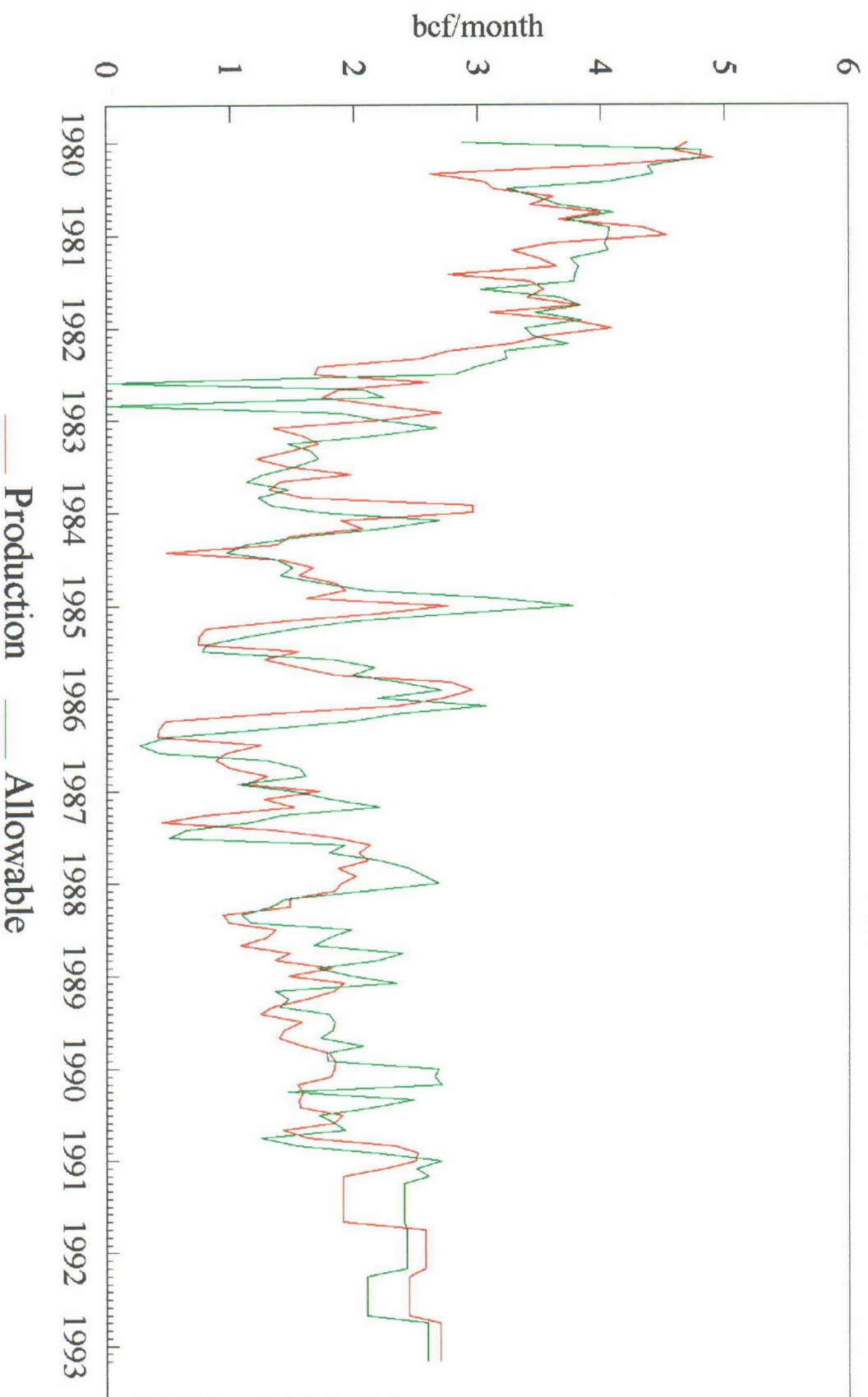
R-35-E										R-36-E										R-37-E										Hearing Date: February 17, 1994									
0	21	22	23	24	19	20	21	22	23	24	19	20	21	22	23	24	19	20	21	22	23	24	T-18-S																
9	28	27	26	25	30	29	28	27	26	25	30	29	28	27	26	25	30	29	28	27	26	25																	
2	33	34	35	36	31	32	33	34	35	36	31	32	33	34	35	36	31	32	33	34	35	36																	
1	4	3	2	1	6	5	4	3	2	1	6	5	4	3	2	1	6	5	4	3	2	1																	
8	9	10	11	12	7	8	9	10	11	12	7	8	9	10	11	12	7	8	9	10	11	12																	
7	16	15	14	13	18	17	16	15	14	13	18	17	16	15	14	13	18	17	16	15	14	13	T-19-S																
0	21	22	23	24	19	20	21	22	23	24	19	20	21	22	23	24	19	20	21	22	23	24																	
9	28	27	26	25	30	29	28	27	26	25	30	29	28	27	26	25	30	29	28	27	26	25																	
2	33	34	35	36	31	32	33	34	35	36	31	32	33	34	35	36	31	32	33	34	35	36																	
1	4	3	2	1	6	5	4	3	2	1	6	5	4	3	2	1	6	5	4	3	2	1																	
8	9	10	11	12	7	8	9	10	11	12	7	8	9	10	11	12	7	8	9	10	11	12	T-20-S																
7	16	15	14	13	18	17	16	15	14	13	18	17	16	15	14	13	18	17	16	15	14	13																	
0	21	22	23	24	19	20	21	22	23	24	19	20	21	22	23	24	19	20	21	22	23	24																	
9	28	27	26	25	30	29	28	27	26	25	30	29	28	27	26	25	30	29	28	27	26	25																	
2	33	34	35	36	31	32	33	34	35	36	31	32	33	34	35	36	31	32	33	34	35	36																	
R-35-E										R-36-E										R-37-E										R-38-E									

**EUMONT GAS FIELD**  
**LEA COUNTY, NEW MEXICO**

*Texaco Exhibits 1 through  
Complete Set*

# Eumont Yates Seven Rivers Queen (Pror Gas)

Field Allowable and Production



**BEFORE THE  
OIL CONSERVATION DIVISION**  
Santa Fe, New Mexico

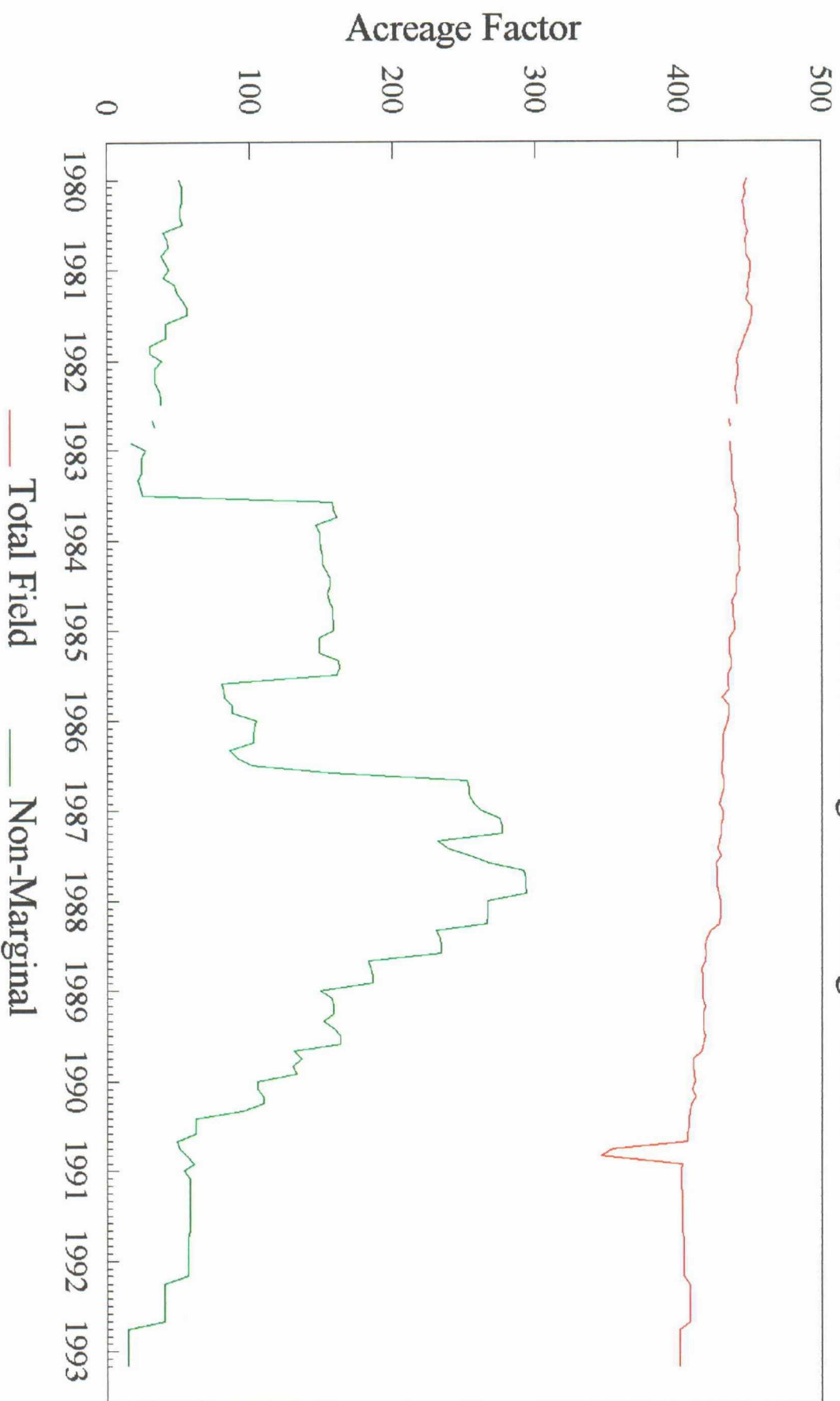
Case No. 10036 (Reopened) Exhibit No. 2

Submitted by: Texaco Inc.

Hearing Date: February 17, 1994

# Eumont Yates Seven Rivers Queen (Pror Gas)

Total Field and Non-Marginal Acreage Factors





**BEFORE THE  
OIL CONSERVATION DIVISION**  
Santa Fe, New Mexico

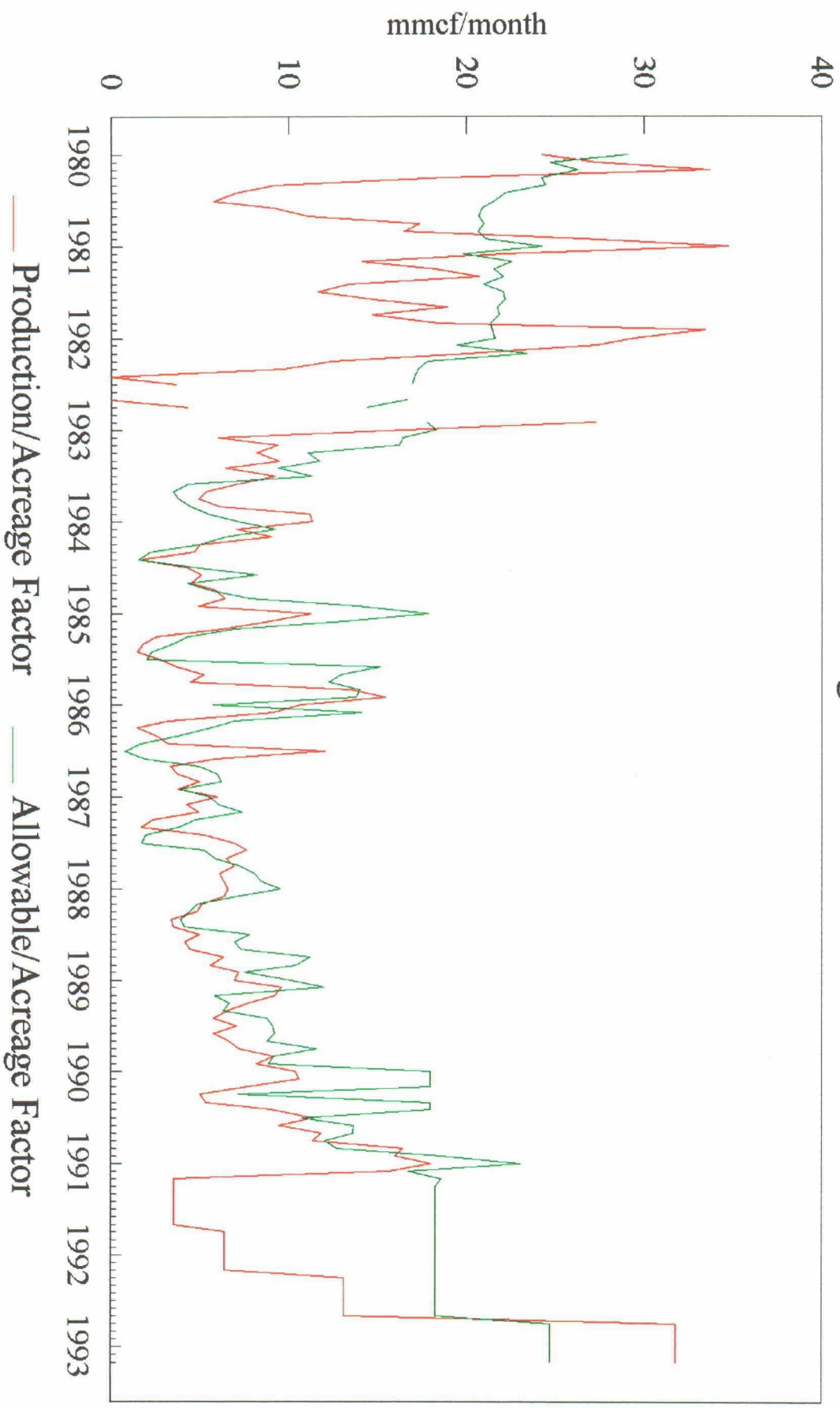
Case No. 10036 (Reopened) Exhibit No. 3

Submitted by: Texaco Inc.

Hearing Date: February 17, 1994

# Eumont Yates Seven Rivers Queen (Pror Gas)

Normalized Non-marginal Production and Allowable



*total non marginal prod. + total non  
marginal allow*

*AF*

**BEFORE THE  
OIL CONSERVATION DIVISION**  
Santa Fe, New Mexico

Case No. 10036 (Reopened) Exhibit No. 4

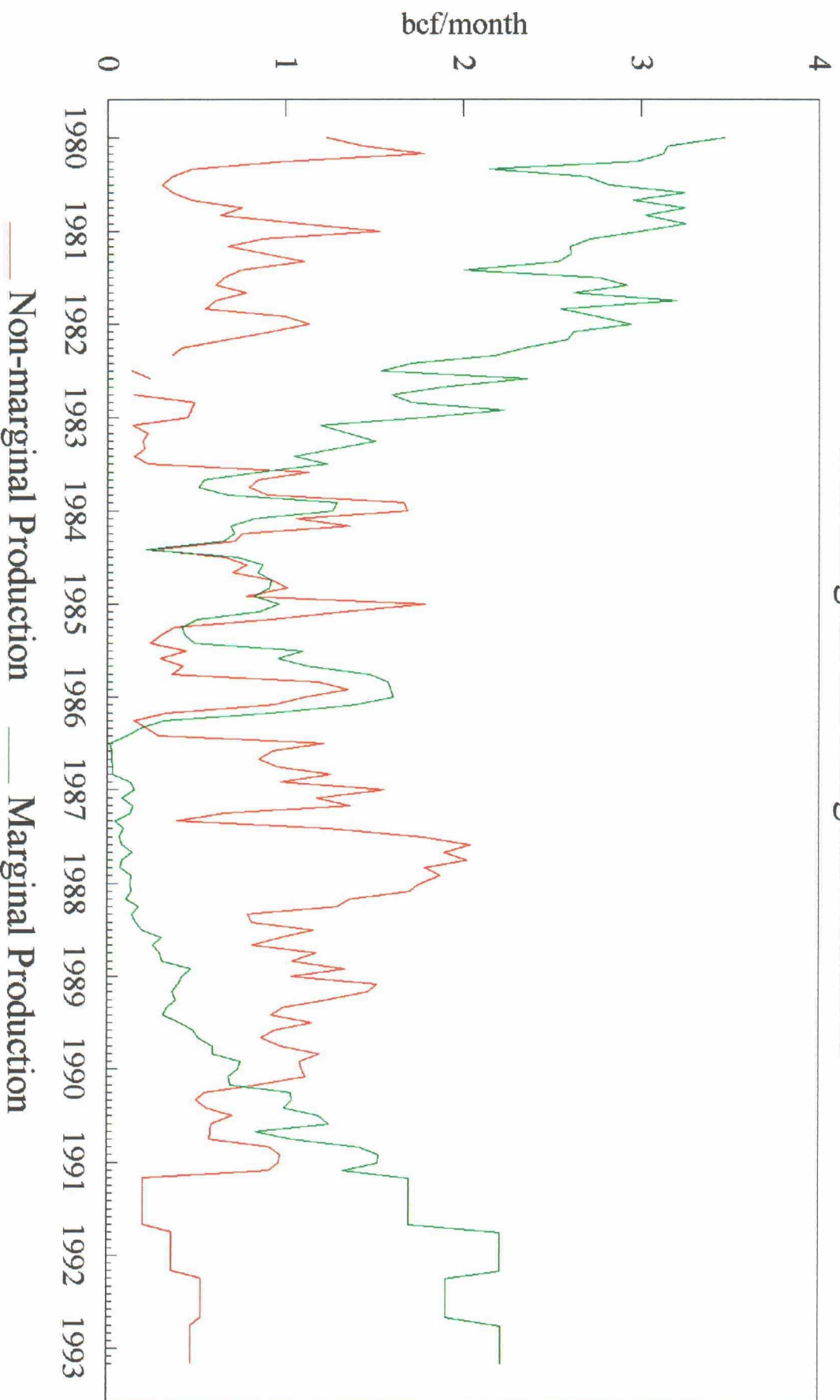
Submitted by: Texaco Inc.

Hearing Date: February 17, 1994



# Eumont Yates Seven Rivers Queen (Pror Gas)

Non-marginal and Marginal Production



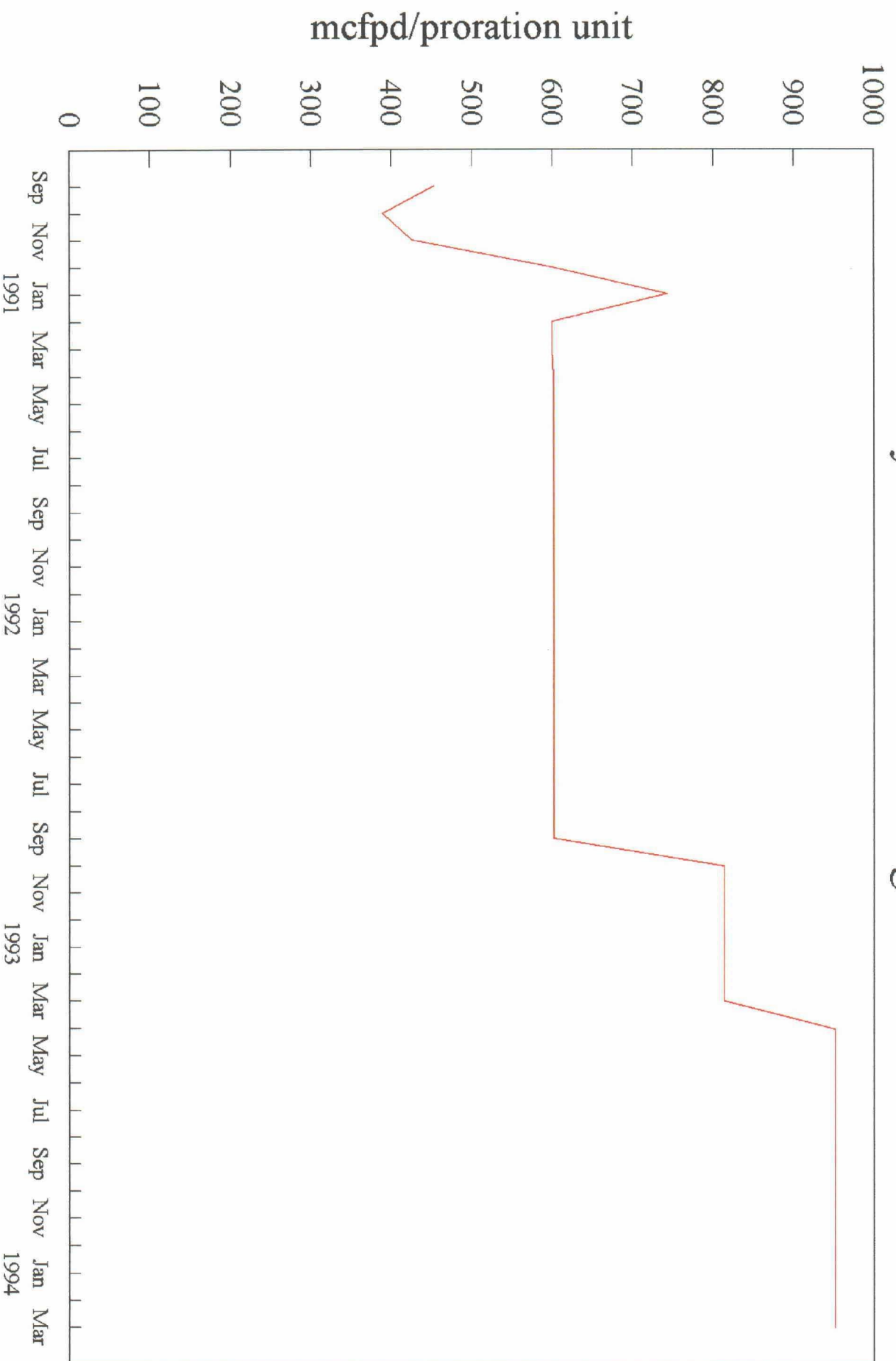
**BEFORE THE  
OIL CONSERVATION DIVISION**  
Santa Fe, New Mexico

Case No. 10036 (Reopened) Exhibit No. 5

Submitted by: Texaco Inc.

Hearing Date: February 17, 1994

# History of Eumont Non-Marginal Allowables





**BEFORE THE  
OIL CONSERVATION DIVISION**  
Santa Fe, New Mexico

Case No. 10036 (Reopened) Exhibit No. 6

Submitted by: Texaco Inc.

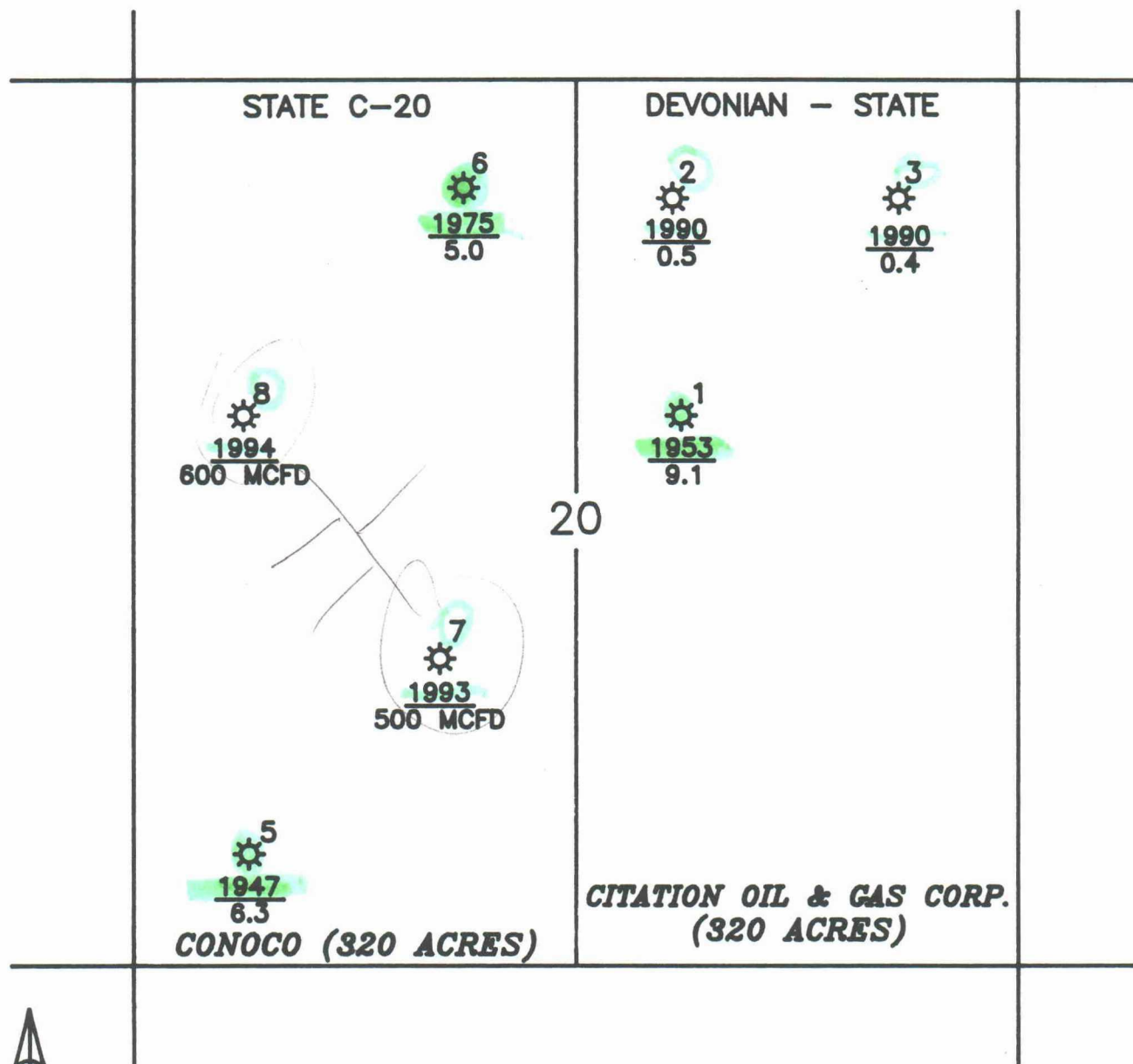
Hearing Date: February 17, 1994

**CASE NO. 10036**  
**EUMONT GAS POOL**

Submitted by: Conoco Inc.

Hearing Date: Feb 17, 1994

# EUMONT GAS POOL SEC. 20, T21S, R36E LEA CO., NM



## LEGEND:

COMPLETION DATE

CUMULATIVE GAS PRODUCTION, BCF

☼ PRODUCING GAS WELL

SCALE:

1" = 1000'

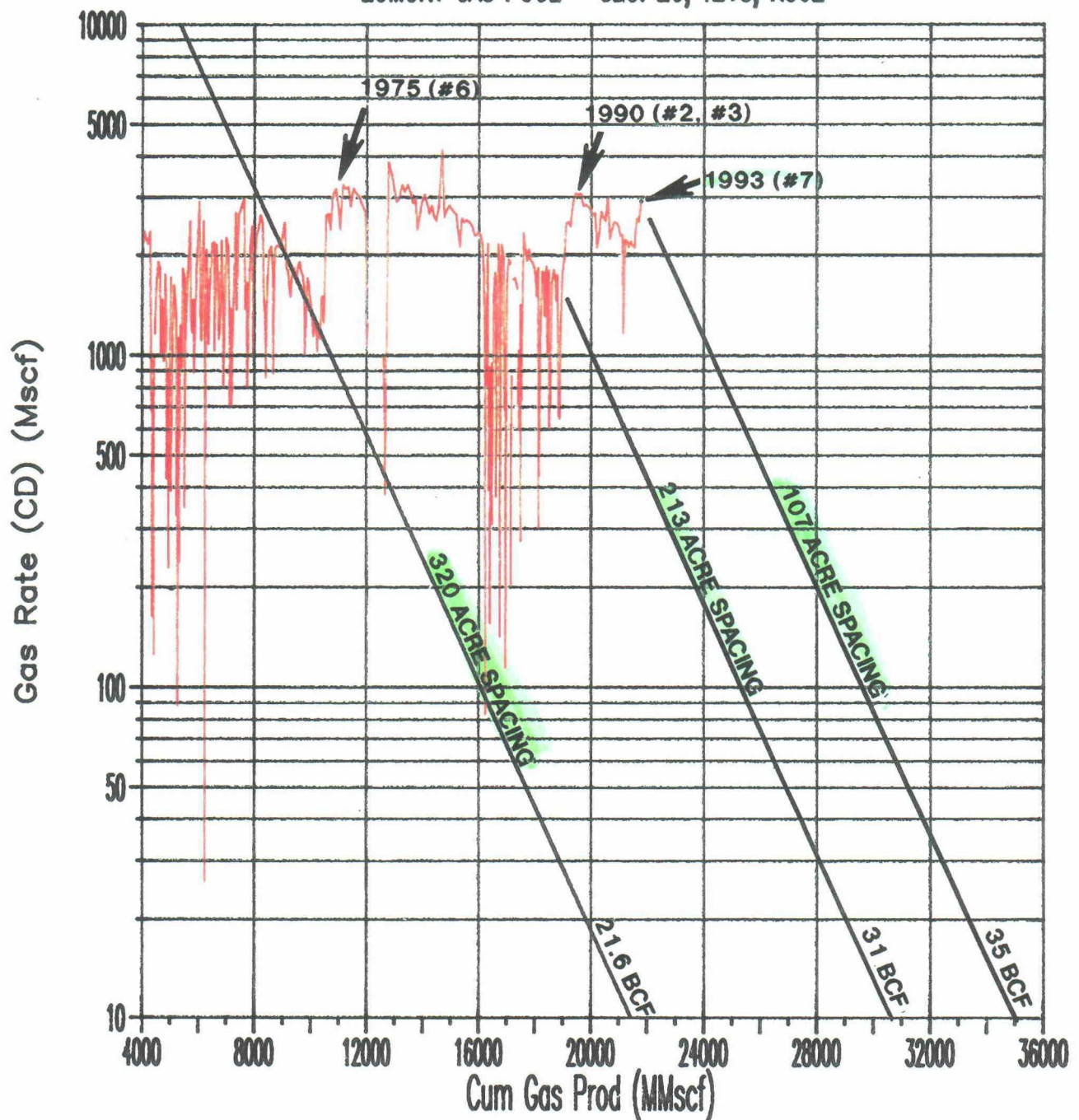
- current well/wells  
- simulation  
- off-set activities  
- pressure

BEFORE AN EXAMINER OF THE  
OIL CONSERVATION DIVISION

EXHIBIT NO. 1  
CASE NO.: 10036  
Submitted by: Conoco Inc.  
Hearing Date: Feb 17, 1994



# EUMONT GAS POOL - SEC. 20, T21S, R36E



Gas Rate vs Cum. Gas slope:  $-1.8642707 \times 10^{-7}$  1/scf

Current Gas rate: 2922.00 Mscf/d

Economic Limit: 10.000 Mscf/d

Cumulative Gas Produced: 21781.20 MMscf

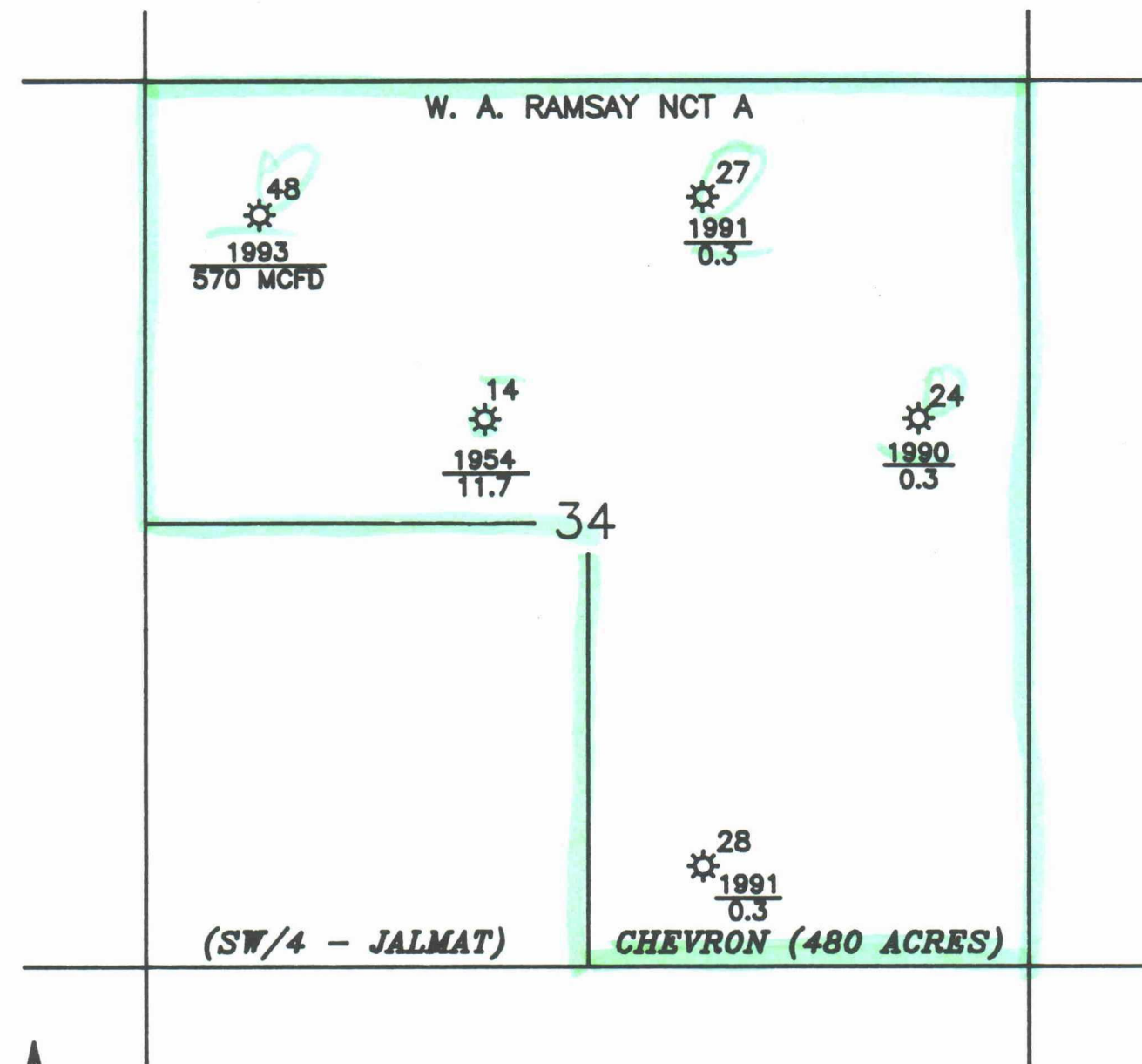
Remaining Reserves: 13226.0 MMscf

Total Reserves: 35007.2 MMscf

BEFORE AN EXAMINER OF THE  
OIL CONSERVATION DIVISION

EXHIBIT NO. 2  
CASE NO.: 10036  
Submitted by: Conoco Inc.  
Hearing Date: Feb 17, 1994

# EUMONT GAS POOL SEC. 34, T21S, R36E LEA CO., NM



## LEGEND:

COMPLETION DATE

CUMULATIVE GAS PRODUCTION, BCF

⚙ PRODUCING GAS WELL

SCALE:

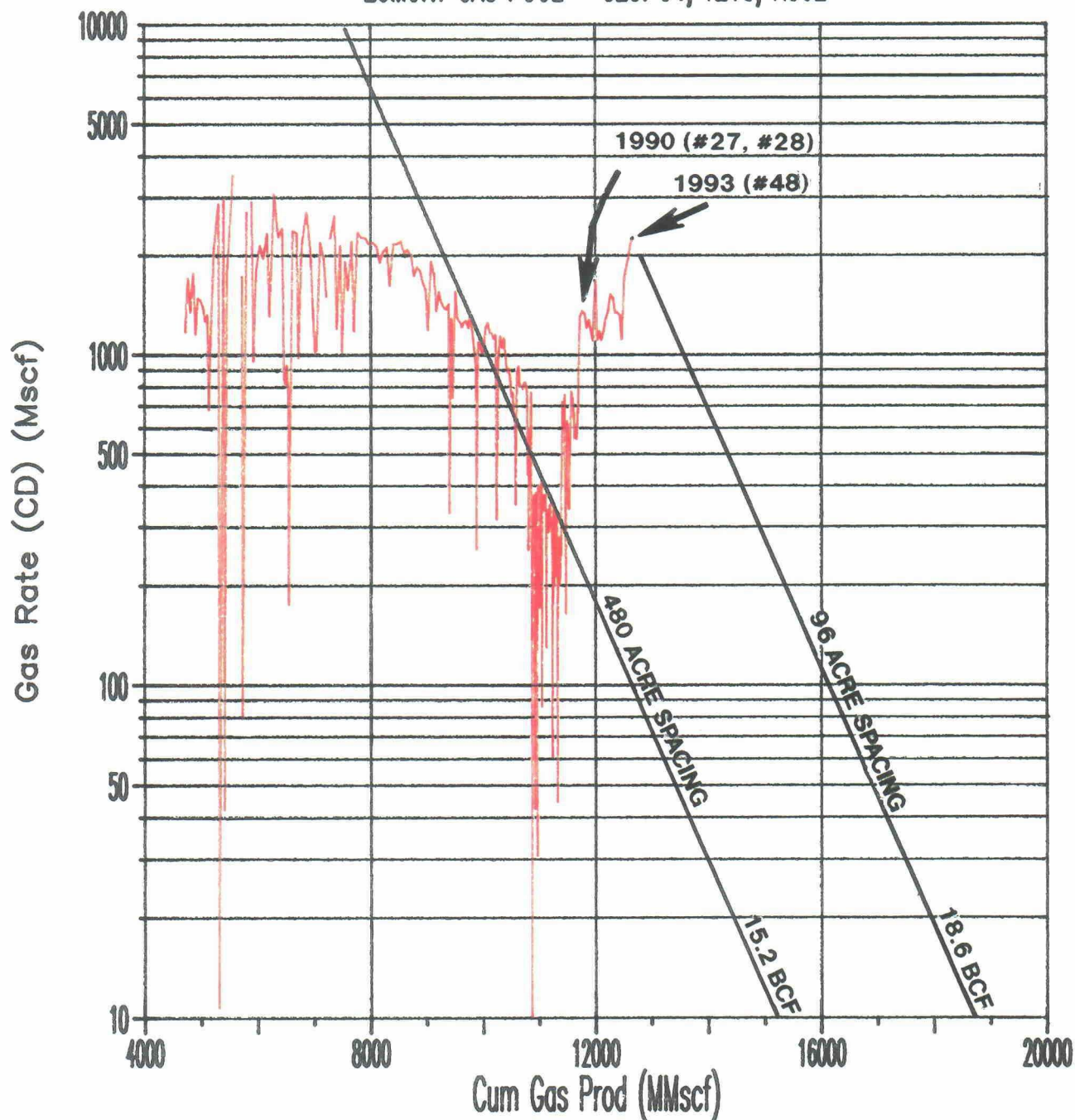
1" = 1000'

BEFORE AN EXAMINER OF THE  
OIL CONSERVATION DIVISION

EXHIBIT NO. 3  
CASE NO.: 10036  
Submitted by: Conoco Inc.  
Hearing Date: Feb 17, 1994



# EUMONT GAS POOL - SEC. 34, T21S, R36E



Gas Rate vs Cum. Gas slope:  $-3.8991786 \times 10^{-7}$  1/scf

Current Gas rate: 2250.20 Mscf/d

Economic Limit: 10.000 Mscf/d

Cumulative Gas Produced: 12655.94 MMscf

Remaining Reserves: 6032.6 MMscf

Total Reserves: 18688.5 MMscf

BEFORE AN EXAMINER OF THE  
OIL CONSERVATION DIVISION

EXHIBIT NO. 4  
CASE NO.: 10036  
Submitted by: Conoco Inc.  
Hearing Date: Feb 17, 1994



EUMONT GAS POOL  
SEC. 35, T21S, R36E  
LEA CO., NM

640 acre Unit

W. A. RAMSAY NCT A

$\odot^{13}$   
 $\frac{1979}{0.9}$

$\odot^{20}$   
 $\frac{1956}{9.4}$

35

$\odot^{10}$   
 $\frac{1991}{1.5}$

$\odot^{12}$   
 $\frac{1982/1991}{2.1}$

$\odot^7$   
 $\frac{1973}{0.8}$

$\odot^3$   
 $\frac{1978}{1.5}$

CHEVRON (640 ACRES)



**LEGEND:**

COMPLETION DATE

CUMULATIVE GAS PRODUCTION, BCF

$\odot$  PRODUCING GAS WELL

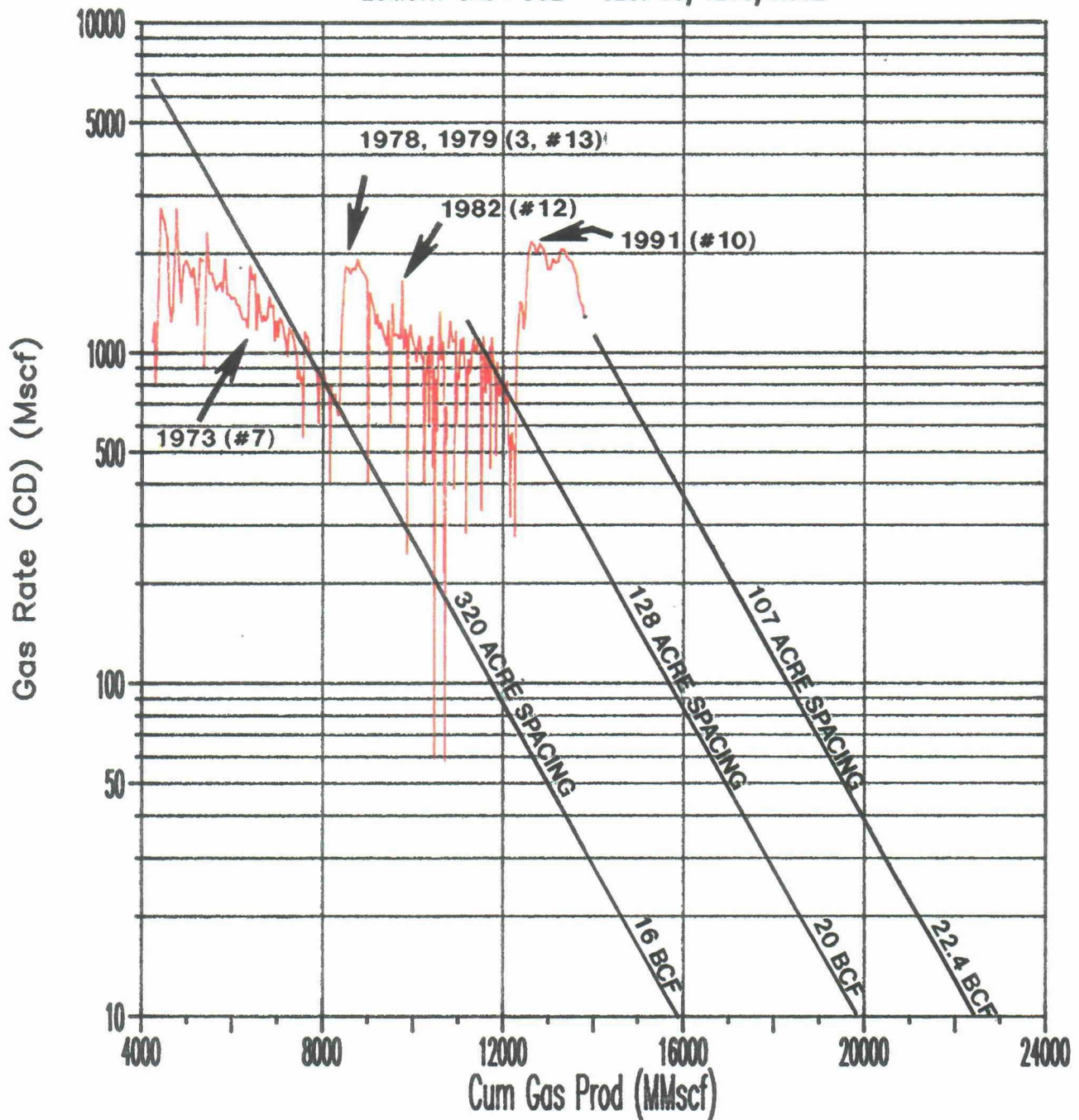
SCALE:

1" = 1000'

BEFORE AN EXAMINER OF THE  
OIL CONSERVATION DIVISION

EXHIBIT NO. 5  
CASE NO.: 10036  
Submitted by: Conoco Inc.  
Hearing Date: Feb 17, 1994

# EUMONT GAS POOL - SEC. 35, T21S, R36E



Gas Rate vs Cum. Gas slope:  $-2.4368464e-007$  1/scf

Current Gas rate: 1282.10 Mscf/d

Economic Limit: 10.000 Mscf/d

Cumulative Gas Produced: 13796.70 MMscf

Remaining Reserves: 8650.2 MMscf

Total Reserves: 22446.9 MMscf

BEFORE AN EXAMINER OF THE  
OIL CONSERVATION DIVISION

EXHIBIT NO. 6  
CASE NO.: 10036  
Submitted by: Conoco Inc.  
Hearing Date: Feb 17, 1994

**Conoco Inc.**

**Eumont Development Program**

**Remedial Economic Analysis**

Well:	State C-16 No. 1
Location:	Sec. 16, Unit E, T20S, R37E
Project Description:	Clean out, sand fracture Eumont
Proration Unit Size:	40 acres
Allocation Factor:	0.25
Production:	60 MCFD (State C-16 No. 1)
Project cost:	\$90,000
Gas Price:	\$2 per MCF
Net Revenue Interest:	87.5%

<b>Current Base Allowable:</b>	<b>600 MCFD</b>
Proration Unit Allowable:	150 MCFD (600 MCFD x 0.25)
Economic Incentive:	90 MCFD (150 MCFD - 60 MCFD)
Incentive Cash Flow:	\$57,487/year (90 MCFD x \$2.0/MCF x .875 x 365)
<u>Project Payout:</u>	<u>1.56 years</u> (\$90,000/\$57,487)

<b>Prior Base Allowable:</b>	<b>300 MCFD</b>
Proration Unit Allowable:	75 MCFD (300 MCFD x 0.25)
Economic Incentive:	15 MCFD (75 MCFD - 60 MCFD)
Incentive Cash Flow:	\$9,581/year (15 MCFD x \$2.0/MCF x .875 x 365)
<u>Project Payout:</u>	<u>9.39 years</u> (\$90,000/\$9,581)

<b>Results:</b>	
Work Completed:	November 22, 1993
Current Production:	330 MCFD
Additional Reserves:	0.4 BCF

BEFORE AN EXAMINER OF THE  
OIL CONSERVATION DIVISION

EXHIBIT NO. 7  
CASE NO.: 10036  
Submitted by: Conoco Inc.  
Hearing Date: Feb 17, 1994

**Conoco Inc.**

**Eumont Development Program**

**Recompletion Economic Analysis**

Well:	State C-20 No. 7
Location:	Sec. 20, Unit K, T21S, R36E
Project Description:	Recomplete in Eumont
Proration Unit Size:	320 acres
Allocation Factor:	2.00
Lease Production:	700 MCFD (State C-20 No. 5, No. 6)
Project cost:	\$167,000
Gas Price:	\$2 per MCF
Net Revenue Interest:	87.5%

<b>Current Base Allowable:</b>	<b>600 MCFD</b>
Proration Unit Allowable:	1200 MCFD (600 MCFD x 2.00)
Economic Incentive:	500 MCFD (1200 MCFD - 700 MCFD)
Incentive Cash Flow:	\$319,375/year (500 MCFD x \$2.0/MCF x .875 x 365)
<u>Project Payout:</u>	<u>0.52 years</u> (\$167,000/\$319,375)

<b>Prior Base Allowable:</b>	<b>300 MCFD</b>
Proration Unit Allowable:	600 MCFD (300 MCFD x 2.00)
<u>Economic Incentive:</u>	<u>None</u> (700 MCFD > 600 MCFD base allowable)

<b>Results:</b>	
Work Completed:	July 1, 1993
Current Production:	1700 MCFD (State C-20 No. 5, 6, 7)
Additional Reserves:	1.9 BCF

BEFORE AN EXAMINER OF THE  
OIL CONSERVATION DIVISION

EXHIBIT NO. 8  
CASE NO.: 10036  
Submitted by: Conoco Inc.  
Hearing Date: Feb 17, 1994

**Conoco Inc.**

**Eumont Development Program**

**Drilling Economic Analysis**

Well:	Meyer B-8 No. 6
Location:	Sec. 18, Unit E, T21S, R36E
Project Description:	Drill and Equip New Well
Proration Unit Size:	160 acres
Allocation Factor:	1.00
Lease Production:	110 MCFD (Meyer B-8 No. 4)
Project cost:	\$323,000
Gas Price:	\$2 per MCF
Net Revenue Interest:	87.5%

<b>Current Base Allowable:</b>	<b>600 MCFD</b>
Proration Unit Allowable:	600 MCFD (600 MCFD x 1.00)
Economic Incentive:	490 MCFD (600 MCFD - 110 MCFD)
Incentive Cash Flow:	\$312,987/year (490 MCFD x \$2.0/MCF x .875 x 365)
<u>Project Payout:</u>	<u>1.03 years</u> (\$323,000/\$312,987)

<b>Prior Base Allowable:</b>	<b>300 MCFD</b>
Proration Unit Allowable:	300 MCFD (300 MCFD x 1.00)
Economic Incentive:	190 MCFD (300 MCFD - 110 MCFD)
Incentive Cash Flow:	\$121,362/year (190 MCFD x \$2.0/MCF x .875 x 365)
<u>Project Payout:</u>	<u>2.67 years</u> (\$323,000/\$121,362)

<b>Results:</b>	
Work Completed:	December 30, 1993
Current Lease Production:	810 MCFD (Meyer B-8 No. 4 and No. 6)
Additional Reserves:	1.6 BCF

BEFORE AN EXAMINER OF THE  
OIL CONSERVATION DIVISION

EXHIBIT NO. 9  
CASE NO.: 10036  
Submitted by: Conoco Inc.  
Hearing Date: Feb 17, 1994



## **EUMONT GAS POOL DEVELOPMENT PROGRAM**

### **1993 Work Completed**

16	Recompletions/Remedials
4	Drilling Wells
\$3.6 MM	Investment
8.4	MMCFGPD Production Gain
15	BCFG of Additional Recovery

### **1994 Work Planned**

15-20	Recompletions/Remedials
6-10	Drilling Wells
\$5.3 MM	Investment
17	BCFG of Additional Recovery

BEFORE AN EXAMINER OF THE  
OIL CONSERVATION DIVISION

EXHIBIT NO. 10  
CASE NO.: 10036  
Submitted by: Conoco Inc.  
Hearing Date: Feb 17, 1994