

BCM

Will File

no views T

Submit to Appropriate District Office  
State Lease - 4 copies  
Fee Lease - 3 copies

State of New Mexico  
Energy, Minerals and Natural Resources Department

Form C-102  
Revised 1-1-89

OIL CONSERVATION DIVISION

P.O. Box 2088

Santa Fe, New Mexico 87504-2088

DISTRICT I

P.O. Box 1980, Hobbs, NM 88240

DISTRICT II

P.O. Drawer DD, Artesia, NM 88210

DISTRICT III

1000 Rio Brazos Rd., Aztec, NM 87410

WELL LOCATION AND ACREAGE DEDICATION PLAT

All Distances must be from the outer boundaries of the section

Operator <b>GREAT WESTERN DRILLING COMPANY</b>			Lease <b>J.E. DECKER</b>		Well No. <b>11</b>
Unit Letter <b>M</b>	Section <b>8</b>	Township <b>32 N</b>	Range <b>11 W</b>	County <b>San Juan</b>	
Actual Footage Location of Well: <b>910</b> feet from the <b>South</b> line and <b>955</b> feet from the <b>West</b> line					
Ground level Elev. <b>6617</b>	Producing Formation		Pool	Dedicated Acreage: <b>327.82</b> Acres	
<p>1. Outline the acreage dedicated to the subject well by colored pencil or hatchure marks on the plat below.</p> <p>2. If more than one lease is dedicated to the well, outline each and identify the ownership thereof (both as to working interest and royalty).</p> <p>3. If more than one lease of different ownership is dedicated to the well, have the interest of all owners been consolidated by communitization, unitization, force-pooling, etc.? <input type="checkbox"/> Yes <input type="checkbox"/> No If answer is "yes" type of consolidation _____</p> <p>If answer is "no" list the owners and tract descriptions which have actually been consolidated. (Use reverse side of this form if necessary.) _____</p> <p>No allowable will be assigned to the well until all interests have been consolidated (by communitization, unitization, forced-pooling, or otherwise) or until a non-standard unit, eliminating such interest, has been approved by the Division.</p>					

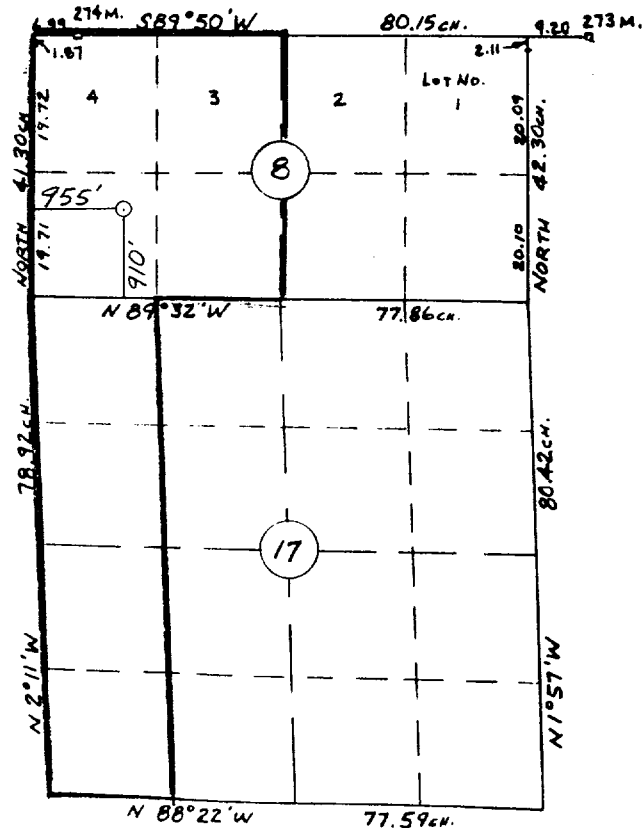
AMENDED ACREAGE DEDICATION

SCALE: 1" = 2000'

CASE NO. **10048**

EXHIBIT NO. **Z**

BEFORE EXAMINER CATANACH  
OIL CONSERVATION DIVISION



OPERATOR CERTIFICATION

I hereby certify that the information contained herein is true and complete to the best of my knowledge and belief.

Signature *D. E. Baxter*  
D. E. Baxter  
Printed Name  
Superintendent  
Position  
Great Western Drilg Co  
Company  
February 22, 1990  
Date

SURVEYOR CERTIFICATION

I hereby certify that the well location shown on this plat was plotted from field notes of actual surveys made by me or under my supervision, and that the same is true and correct to the best of my knowledge and belief.

5-9-89  
Date Surveyed  
William E. Mahnke II  
Signature & Seal of Professional Surveyor  
*William E. Mahnke II*  
Certificate No. **8466**