

Submit to Appropriate
District Office
State Lease - 4 copies
Fee Lease - 3 copies

State of New Mexico
Energy, Minerals and Natural Resources Department

BEFORE EXAMINER CATANACH

Form C-102
Revised 10-88

OIL CONSERVATION DIVISION

EXHIBIT NO. 4

DISTRICT I
P.O. Box 1980, Hobbs, NM 88240

DISTRICT II
P.O. Drawer DD, Artesia, NM 88210

DISTRICT III
1000 Rio Brazos Rd., Aztec, NM 87410

P.O. Box 2088
Santa Fe, New Mexico 87504-2088

CASE NO. 10048

WELL LOCATION AND ACREAGE DEDICATION PLAT

All Distances must be from the outer boundaries of the section

| | | | | |
|--|---|-------------------------------------|--|----------------------------------|
| Operator NORTHWEST PIPELINE CORP. | | Lease COX CANYON UNIT | | Well No. 204 |
| Unit Letter N | Section 17 | Township T.32 N. | Range R.11 W. NMPM | County SAN JUAN COUNTY |
| Actual Footage Location of Well: 1248 feet from the SOUTH line and 1653 feet from the WEST line | | | | |
| Ground level Elev. 6766 | Producing Formation FRUITLAND | Pool BASIN FRUITLAND COAL | Dedicated Acreage: W/2 320 Acres | |

1. Outline the acreage dedicated to the subject well by colored pencil or hatchure marks on the plat below.

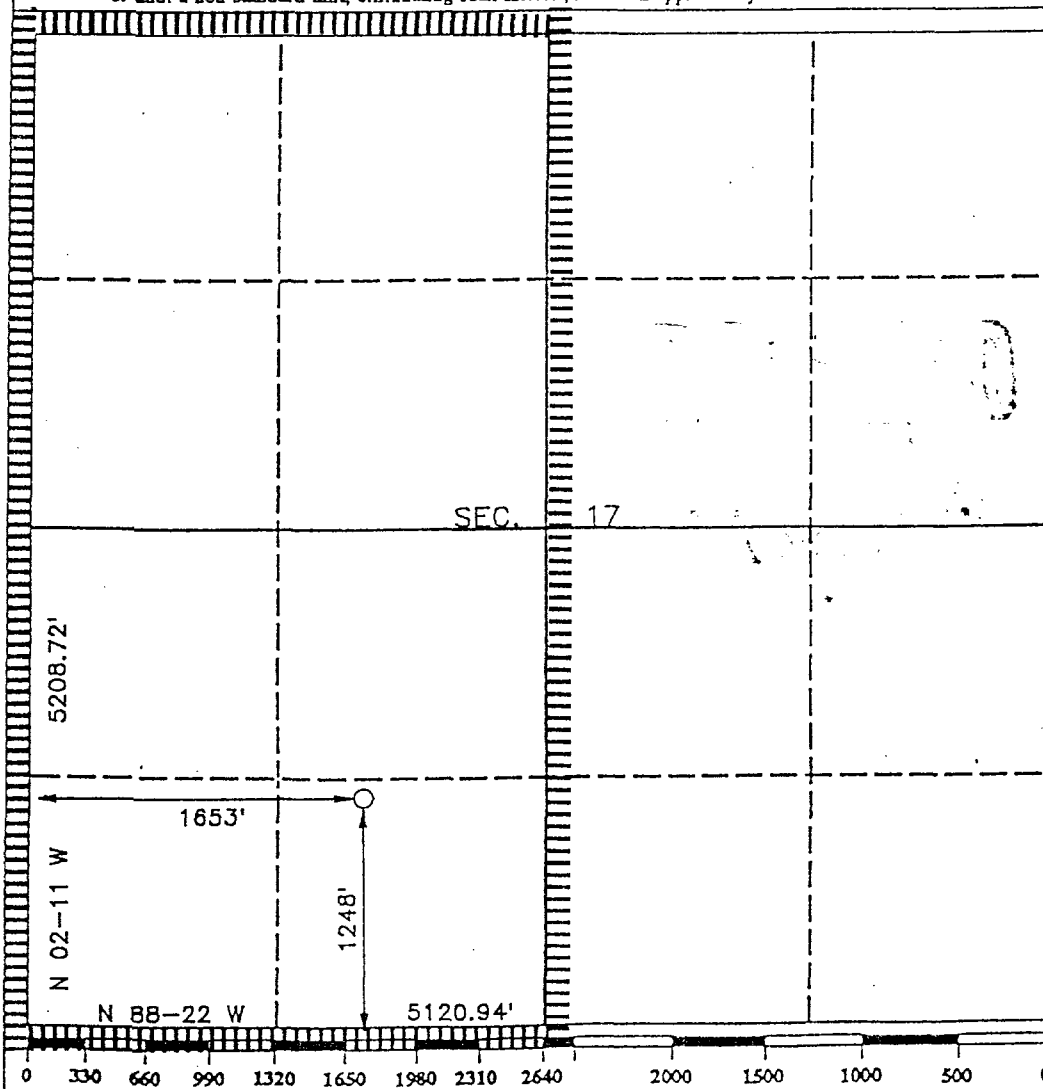
2. If more than one lease is dedicated to the well, outline each and identify the ownership thereof (both as to working interest and royalty).

3. If more than one lease of different ownership is dedicated to the well, have the interest of all owners been consolidated by communitization, unitization, force-pooling, etc.?

☒ Yes ☐ No If answer is "yes" type of consolidation **UNITIZED**

If answer is "no" list the owners and tract descriptions which have actually been consolidated. (Use reverse side of this form if necessary.)

No allowable will be assigned to the well until all interests have been consolidated (by communitization, unitization, forced-pooling, or otherwise) or until a non-standard unit, eliminating such interest, has been approved by the Division.



OPERATOR CERTIFICATION

I hereby certify that the information contained herein is true and complete to the best of my knowledge and belief.

Signature *Mark McCallister*
Printed Name **MARK MCCALLISTER**
Position **PROD. & DRILG. ENGINEER**
Company **NORTHWEST PIPELINE CORP.**
Date **APRIL 24, 1990**

SURVEYOR CERTIFICATION

I hereby certify that the well location shown on this plat was plotted from field notes of actual surveys made by me or under my supervision, and that the same is true and correct to the best of my knowledge and belief.

Date Surveyed **APRIL 20, 1990**
Signature & Seal of Professional Surveyor **R. HOWARD DAGGETT**
Certificate No. **9879**
Registered Professional Land Surveyor