

● Proposed Well Location
○ Control

* From Geologic Evaluation of Critical Production
Parameters for Coalbed Methane Resources:
GAS RESEARCH INSTITUTE, Published: Jan. 1990

Exhibit 4



MESA LIMITED PARTNERSHIP

SAN JUAN BASIN
Bottom Hole Pressure
C.I. = 200 psi

APPLICATION FOR COMPULSORY POOLING
CASE NO. 10076

September 19, 1990

FC State Com. #27

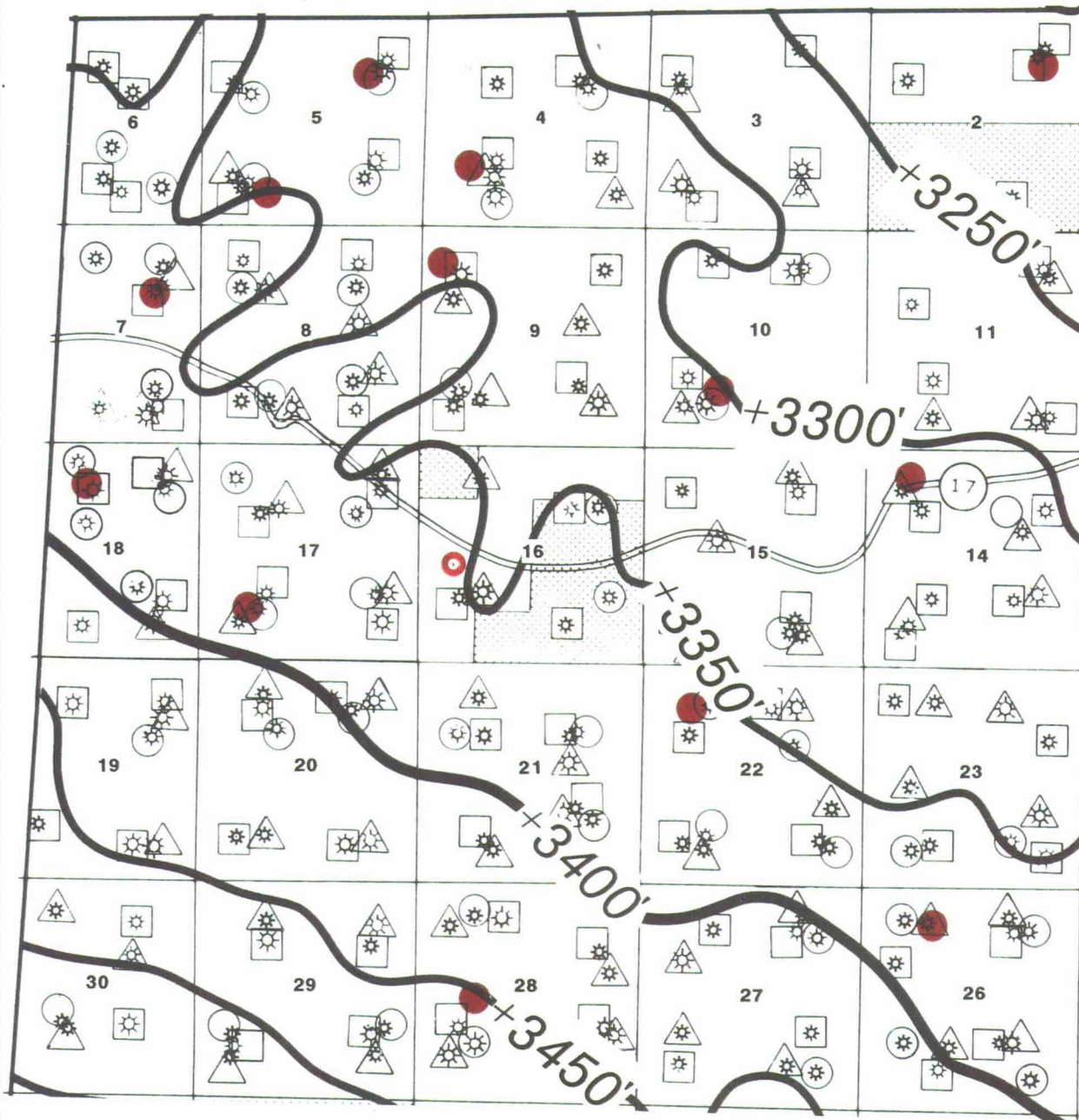
2330' FSL, 890' FWL

Section 16, T29N-R8W

San Juan County, New Mexico

R 8 W

T
29
N



- Proposed Well Location
- Fruitland Coal Completion

Exhibit 5



MESA LIMITED PARTNERSHIP

SAN JUAN BASIN

Structure: Base Fruitland Formation
C.I. = 50'

APPLICATION FOR COMPULSORY POOLING
CASE NO. 10076

September 19, 1990

FC State Com. #27

2330' FSL, 890' FWL

Section 16, T29N-R8W

San Juan County, New Mexico