

PROPOSED  
INJECTION  
WELLS

BEFORE EXAMINER CATANACH  
OIL CONSERVATION DIVISION

GREEN HILL EXHIBIT NO. 4

CASE NO. 10154

# INJECTION WELL DATA SHEET

Greenhill Petroleum Corporation		Lovington San Andres Unit		
OPERATOR		LEASE		
#3	660 FNL & 1980 FEL	36	T16S	R36E
WELL NO.	FOOTAGE LOCATION	SEC.	TOWNSHIP	RANGE

## Tubular Data

### Surface Casing

Size: 8 5/8 " Cemented with 450 SX

TOC: Surface feet determined by calc.

Hole size: 11

### Intermediate Casing

Size:        " Cemented with        SX

TOC:        feet determined by       

Hole Size:       

### Long String

Size: 5 1/2 " Cemented with 375 SX

TOC: 2575 feet determined by 80% calc

Hole Size: 7 7/8

Total Depth: 4625'

### Injection Interval

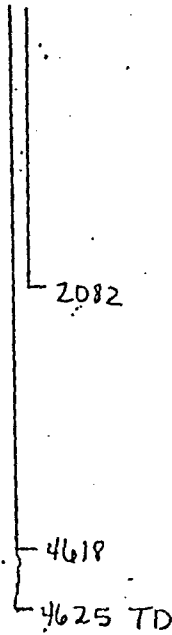
4618 feet to 5090 feet  
(perforated or open-hole, indicate which)

Tubing size 2 3/8 " lined with IPC set in a  
(material)  
waterflood tension packer packer at 4598 feet.  
(brand & model)  
(or describe any other casing-tubing seal).

## Other Data

- Name of the injection formation San Andres
- Name of Field or Pool (If applicable) Lovington San Andres
- Is this a new well drilled for injection? No  
If no, for what purpose was the well originally drilled? Production
- Has the well ever be perforated in any other zone(s)? List all such perforated intervals and give plugging detail (sacks of cement or bridge plug(s) used).  
No
- Give the depth to and name of any overlying and/or underlying oil or gas zones (pools) in this area.  
Underlying - Grayburg

Completed  
11/19/45  
deepen to 5090



# INJECTION WELL DATA SHEET

Greenhill Petroleum Corporation		Lovington San Andres Unit	
OPERATOR		LEASE	
#5	660 FNL & 600 FEL	36	T16S R36E
WELL NO.	FOOTAGE LOCATION	SEC.	TOWNSHIP RANGE

## Tubular Data

### Surface Casing

Size: 8 5/8 " Cemented with 400 SX  
 TOC: Surface feet determined by CITC calc  
 Hole size: 11"

### Intermediate Casing

Size: 8 5/8 " Cemented with 2160 SX  
 TOC: 2160 feet determined by 2160  
 Hole Size:                     

### Long String

Size: 5 1/2 " Cemented with 200 SX  
 TOC: 3535 feet determined by 80% calc  
 Hole Size: 7 7/8"

Total Depth: 5130'

### Injection Interval

4625 feet to 5130 feet  
 (perforated or open-hole, indicate which)

Tubing size 2 3/8 lined with IPC set in a  
waterflood tension packer (material)  
 (brand & model) packer at 4605 feet.  
 (or describe any other casing-tubing seal).

## Other Data

- Name of the injection formation San Andres
- Name of Field or Pool (If applicable) Lovington San Andres
- Is this a new well drilled for injection? No  
 If no, for what purpose was the well originally drilled? Production
- Has the well ever be perforated in any other zone(s)? List all such perforated intervals and give plugging detail (sacks of cement or bridge plug(s) used).  
No
- Give the depth to and name of any overlying and/or underlying oil or gas zones (pools) in this area.  
Underlying - Grayburg

Completed  
 1/30/40

2K66

8 5/8"  
 2160'  
 2160'

5 1/2"  
 4625'

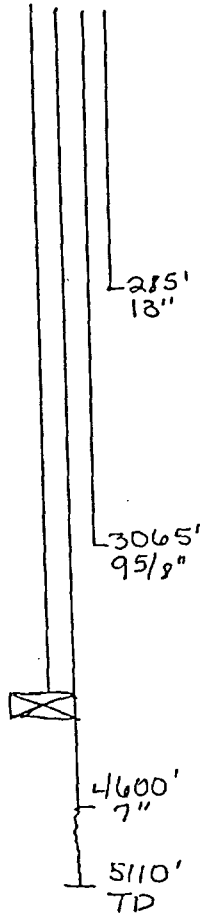
TO 5130'

# INJECTION WELL DATA SHEET

Greenhill Petroleum Corporation		Lovington San Andres Unit		
OPERATOR		LEASE		
#10	1980' FNL & 1980' FEL	36	16S	36E
WELL NO.	FOOTAGE LOCATION	SEC.	TOWNSHIP	RANGE

## Tubular Data

Completed  
4-4-39



### Surface Casing

Size: 13 " Cemented with 250 SX  
 TOC: Surface feet determined by Circulation  
 Hole size: 17-1/4"

### Intermediate Casing

Size: 9-5/8 " Cemented with 250 SX  
 TOC: 2246 feet determined by Calc  
 Hole Size: 12"

### Long String

Size: 7 " Cemented with 225 SX  
 TOC: 3189 feet determined by Calc  
 Hole Size: 8-3/4"

Total Depth: 5110'

### Injection Interval

4600 feet to 5110 feet  
 (perforated or open-hole, indicate which)

Tubing size 2-3/8" lined with IPC set in a  
 (material)  
Water Flood-tension packer packer at 4580 feet.  
 (brand & model)  
 (or describe any other casing-tubing seal).

## Other Data

- Name of the injection formation San Andres
- Name of Field or Pool (If applicable) Lovington San Andres
- Is this a new well drilled for injection? No  
 If no, for what purpose was the well originally drilled? Production
- Has the well ever be perforated in any other zone(s)? List all such perforated intervals and give plugging detail (sacks of cement or bridge plug(s) used).  
No
- Give the depth to and name of any overlying and/or underlying oil or gas zones (pools) in this area.  
Underlying-Grayburg

## INJECTION WELL DATA SHEET

Greenhill Petroleum Corporation		Lovington San Andres Unit		
OPERATOR		LEASE		
#12	1980' FSL & 1980' FWL	36	16S	36E
WELL NO.	FOOTAGE LOCATION	SEC.	TOWNSHIP	RANGE

Tubular Data

Completed  
7-5-45

Deepened  
7/87

	<u>Surface Casing</u>	
	Size: _____ "	Cemented with _____ SX
	TOC: _____ feet	determined by _____
	Hole size: _____	
	<u>Intermediate Casing</u>	
	Size: <u>8-5/8</u> "	Cemented with <u>500</u> SX
	TOC: _____	<u>Surface</u> feet determined by <u>calc 80%</u>
	Hole Size: <u>11"</u>	
	<u>Long String</u>	
	Size: <u>5-1/2</u> "	Cemented with <u>450</u> SX
TOC: <u>2435</u>	feet determined by <u>calc 80%</u>	
Hole Size: <u>7-7/8"</u>		
Total Depth: <u>5055'</u>		
<u>Injection Interval</u>		
<u>4580</u> feet to <u>5055</u> feet (perforated or open-hole, indicate which) --		

Tubing size 2 3/8 lined with IPC set in a  
(material)  
Water flood-tension packer packer at 4560 feet.  
(brand & model)  
(or describe any other casing-tubing seal).

Other Data

- Name of the injection formation San Andres
- Name of Field or Pool (If applicable) Lovington San Andres
- Is this a new well drilled for injection? No  
If no, for what purpose was the well originally drilled? Production
- Has the well ever be perforated in any other zone(s)? List all such perforated intervals and give plugging detail (sacks of cement or bridge plug(s) used).  
No
- Give the depth to and name of any overlying and/or underlying oil or gas zones (pools) in this area.  
Underlying-Grayburg

# INJECTION WELL DATA SHEET

Greenhill Petroleum Corporation		Lovington San Andres		
OPERATOR		LEASE		
#13	1760' FSL & 440' FEL	36	16S	36E
WELL NO.	FOOTAGE LOCATION	SEC.	TOWNSHIP	RANGE

## Tubular Data

Completed  
12-16-39

299'  
13"  
 3003'  
8 5/8"  
 4518'  
5 1/2"  
 5068'  
TD

### Surface Casing

Size: 13 " Cemented with 225 SX  
 TOC: Surface feet determined by calc  
 Hole size: ?

### Intermediate Casing

Size: 8-5/8 " Cemented with 250 SX  
 TOC: 2235 feet determined by calc  
 Hole Size: 11"

### Long String

Size: 5-1/2 " Cemented with 150 SX  
 TOC: 2818 feet determined by calc  
 Hole Size: 6-3/4"

Total Depth: 5068

### Injection Interval

4518 feet to 5068 feet  
 (perforated or open-hole, indicate which)

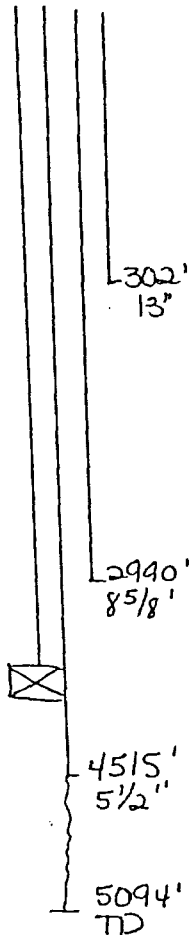
Tubing size 2-3/8" lined with IPC set in a  
 (material)  
waterflood tension packer at 4445 feet.  
 (brand & model)  
 (or describe any other casing-tubing seal).

## Other Data

- Name of the injection formation San Andres
- Name of Field or Pool (If applicable) Lovington San Andres
- Is this a new well drilled for injection? No  
If no, for what purpose was the well originally drilled? Production
- Has the well ever be perforated in any other zone(s)? List all such perforated intervals and give plugging detail (sacks of cement or bridge plug(s) used. NO
- Give the depth to and name of any overlying and/or underlying oil or gas zones (pools) in this area.  
Underlying-Grayburg

## INJECTION WELL DATA SHEET

Greenhill Petroleum Corporation		Lovington San Andres		
OPERATOR		LEASE		
#25	1980' FEL & 660' FSL	36	16S	36E
WELL NO.	FOOTAGE LOCATION	SEC.	TOWNSHIP	RANGE

Tubular DataSurface CasingSize: 13 " Cemented with 200 SXTOC: Surface feet determined by circHole size: 17-1/4"Intermediate CasingSize: 8-5/8 " Cemented with 400 SXTOC: 1765 feet determined by calcHole Size: 11"Long StringSize: 5-1/2 " Cemented with 200 SXTOC: 3424 feet determined by calcHole Size: 7-7/8"Total Depth: 5094'Injection Interval4515 feet to 5090 feet  
(perforated or open-hole, indicate which)Completed  
10-18-39

Tubing size 2- 1/8 lined with IPC set in a  
(material)  
waterflood tension packer at 4495 feet.  
(brand & model)  
(or describe any other casing-tubing seal).

Other Data

- Name of the injection formation San Andres
- Name of Field or Pool (If applicable) Lovington San Andres
- Is this a new well drilled for injection? No  
If no, for what purpose was the well originally drilled? Production
- Has the well ever be perforated in any other zone(s)? List all such perforated intervals and give plugging detail (sacks of cement or bridge plug(s) used).  
No
- Give the depth to and name of any overlying and/or underlying oil or gas zones (pools) in this area.  
Underlying-Grayburg

# INJECTION WELL DATA SHEET

Greenhill Petroleum Corporation		Lovington San Andres Unit		
OPERATOR		LEASE		
#57	660 FSL & 660 FWL	36	T16S	R36E
WELL NO.	FOOTAGE LOCATION	SEC.	TOWNSHIP	RANGE

## Tubular Data

### Surface Casing

Size: 13 " Cemented with 200 SX

TOC: Surface feet determined by circulation

Hole size: 17"

### Intermediate Casing

Size: 9 5/8 " Cemented with 200 SX

TOC: 1509 feet determined by 70% calc

Hole Size: 12 1/4 "

### Long String

Size: 7 " Cemented with 250 SX

TOC: 3266 feet determined by 70% calc

Hole Size: 8 3/4"

Total Depth: 5144'

### Injection Interval

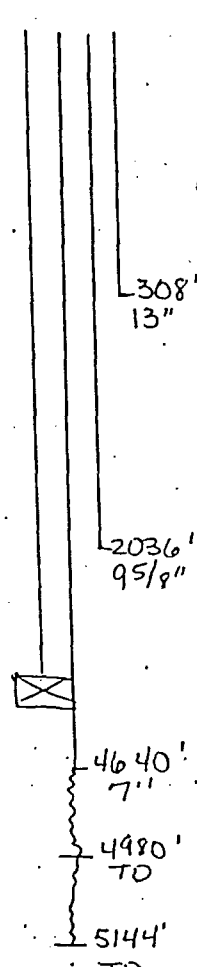
4640 feet to 5144 feet  
(perforated or open-hole, indicate which)

Tubing size 2 3/8 lined with IPC set in a  
(material)  
waterflood tension packer at 4620 feet.  
(brand & model)  
(or describe any other casing-tubing seal).

## Other Data

- Name of the injection formation San Andres
- Name of Field or Pool (IF applicable) Lovington San Andres
- Is this a new well drilled for injection? No  
If no, for what purpose was the well originally drilled? Production
- Has the well ever be perforated in any other zone(s)? List all such perforated intervals and give plugging detail (sacks of cement or bridge plug(s) used).  
No
- Give the depth to and name of any overlying and/or underlying oil or gas zones (pools) in this area.  
Underlying - Grayburg

Gb Pkgs 10-31-26  
4640  
4620  
4620





# INJECTION WELL DATA SHEET

Greenhill Petroleum Corporation		Lovington San Andres Unit		
OPERATOR		LEASE		
#7	1980 FNL & 1980 FEL	31	T16S	R37E
WELL NO.	FOOTAGE LOCATION	SEC.	TOWNSHIP	RANGE

## Tubular Data

### Surface Casing

Size: 8 5/8 " Cemented with 485 SX

TOG: Surface feet determined by Circ calc.

Hole size: 10 1/4

### Intermediate Casing

Size:        " Cemented with        SX

TOG:        feet determined by       

Hole Size:       

### Long String

Size: 5 1/2 " Cemented with 375 SX

TOG: 1711 feet determined by 80% calc.

Hole Size: 7 1/4

Total Depth: 4955'

### Injection Interval

4620 feet to 4990 feet  
(perforated or open-hole, indicate which)

Tubing size 2 3/8 " lined with IPC set in a  
(material)  
packer at 4530 feet.  
(brand & model)  
(or describe any other casing-tubing seal).

## Other Data

- Name of the injection formation San Andres
- Name of Field or Pool (If applicable) Lovington San Andres
- Is this a new well drilled for injection? No  
If no, for what purpose was the well originally drilled? Production
- Has the well ever be perforated in any other zone(s)? List all such perforated intervals and give plugging detail (sacks of cement or bridge plug(s) used).  
No
- Give the depth to and name of any overlying and/or underlying oil or gas zones (pools) in this area.  
Underlying - Grayburg

Completed  
1/5/49

deepen to 4990

8 5/8"  
2043'

5 1/2"  
4620'

TD 4955'

# INJECTION WELL DATA SHEET

Greenhill Petroleum Corporation		Lovington San Andres		
OPERATOR		LEASE		
15	1650' FSL & 1650' FWL	31	16S	37E
WELL NO.	FOOTAGE LOCATION	SEC.	TOWNSHIP	RANGE

## Tubular Data

Completed  
6-1-39

Deepened  
7-23-86

### Surface Casing

Size: 13 " Cemented with 200 SX

TOC: Surface feet determined by calc

Hole size: 17-1/4"

### Intermediate Casing

Size: 9-5/8 " Cemented with 400 SX

TOC: 1818 feet determined by calc

Hole Size: 12"

### Long String

Size: 7 " Cemented with 200 SX

TOC: 3840 feet determined by calc

Hole Size: 8-3/4"

Total Depth: 5110'

### Injection Interval

4531 feet to 5110 feet  
(perforated or open-hole, indicate which)

Tubing size 2-3/8" lined with IPC set in a  
(material)  
waterflood tension packer at 4510 feet.  
(brand & model)  
(or describe any other casing-tubing seal).

## Other Data

- Name of the injection formation San Andres
- Name of Field or Pool (If applicable) Lovington San Andres
- Is this a new well drilled for injection? No  
If no, for what purpose was the well originally drilled? Production
- Has the well ever be perforated in any other zone(s)? List all such perforated intervals and give plugging detail (sacks of cement or bridge plug(s) used. NO
- Give the depth to and name of any overlying and/or underlying oil or gas zones (pools) in this area.  
Underlying-Grayburg

# INJECTION WELL DATA SHEET

Greenhill Petroleum Corporation	Lovington San Andres Unit			
OPERATOR	LEASE			
#17	1920 FSL 990 FEL	31	T-16S	R37E
WELL NO.	FOOTAGE LOCATION	SEC.	TOWNSHIP	RANGE

## Tubular Data

### Surface Casing

Size: 8 5/8 " Cemented with 450 SX

TOC: Surface feet determined by Circ. calc

Hole size: 10 1/4

### Intermediate Casing

Size:        " Cemented with        SX

TOC:        feet determined by       

Hole Size:       

### Long String

Size: 5 1/2 " Cemented with 400 SX

TOC: 1832 feet determined by 80% calc

Hole Size: 7 1/4

Total Depth: 4935'

### Injection Interval

4623 feet to 5090 feet  
(perforated or open-hole, indicate which)

Tubing size 2 3/8 lined with IPC set in a  
(material)  
water flood tension packer packer at 4603 feet.  
(brand & model)  
(or describe any other casing-tubing seal).

## Other Data

- Name of the injection formation San Andres
- Name of Field or Pool (If applicable) Lovington San Andres
- Is this a new well drilled for injection? No  
If no, for what purpose was the well originally drilled? Production
- Has the well ever be perforated in any other zone(s)? List all such perforated intervals and give plugging detail (sacks of cement or bridge plug(s) used).  
No
- Give the depth to and name of any overlying and/or underlying oil or gas zones (pools) in this area.

Underlying - Grayburg

Completed  
9/17/46  
deepen to  
5090

8 5/8"  
2050'  
4623'  
5 1/2"  
TO 4935

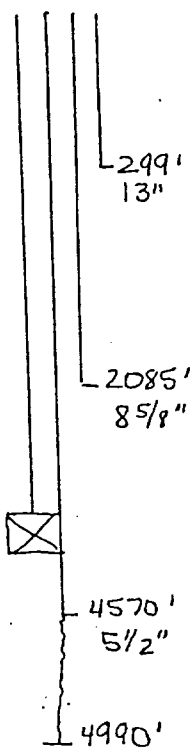
## INJECTION WELL DATA SHEET

Greenhill Petroleum Corporation		Lovington San Andres		
OPERATOR		LEASE		
#58	2310' FNL & <sup>990</sup> 1309' FWL	31	16S	37E
WELL NO.	FOOTAGE LOCATION	SEC.	TOWNSHIP	RANGE

Tubular Data

Completed  
5-15-41

deepen to 5070

Surface Casing

Size: 13 " Cemented with 180 SX

TOC: Surface feet determined by circ

Hole size: 17-1/4"

Intermediate Casing

Size: 8-5/8 " Cemented with 400 SX

TOC: 860 feet determined by calc

Hole Size: 11"

Long String

Size: 5-1/2 " Cemented with 200 SX

TOC: 3479 feet determined by calc

Hole Size: 7-7/8"

Total Depth: 4990'

Injection Interval

4570 feet to 5070 feet  
(perforated or open-hole, indicate which).

Tubing size 2- /8 lined with IPC set in a  
(material)  
packer at 4550 feet.  
(brand & model)  
(or describe any other casing-tubing seal).

Other Data

1. Name of the injection formation San Andres
2. Name of Field or Pool (If applicable) Lovington San Andres
3. Is this a new well drilled for injection? No  
If no, for what purpose was the well originally drilled? Production
4. Has the well ever be perforated in any other zone(s)? List all such perforated intervals and give plugging detail (sacks of cement or bridge plug(s) used). NO
5. Give the depth to and name of any overlying and/or underlying oil or gas zones (pools) in this area.

Underlying-Grayburg

## INJECTION WELL DATA SHEET

Greenhill Petroleum Corporation		Lovington San Andres		
OPERATOR		LEASE		
#31	660' FNL & 1980' FWL	1	17S	36E
WELL NO.	FOOTAGE LOCATION	SEC.	TOWNSHIP	RANGE

Tubular DataCompleted  
12-22-39Deepened  
6-20-87Surface CasingSize: 13 " Cemented with 200 SXTOC: Surface feet determined by circHole size: 17-1/4"291'  
13"Intermediate CasingSize: 8-5/8 " Cemented with 500 SXTOC: 2021 feet determined by calcHole Size: 11"3109'  
8 3/8"Long StringSize: 5-1/2 " Cemented with 325 SXTOC: 2890 feet determined by calc 80%Hole Size: 7-7/8"4541'  
5 1/2"Total Depth: 51254960'  
TDInjection Interval5125 feet to 5125 feet  
TD (perforated or open-hole, indicate which)

Tubing size 2-3/8" lined with IPC set in a  
(material)  
water flood tension packer at 4499 feet.  
(brand & model)  
(or describe any other casing-tubing seal).

Other Data

- Name of the injection formation San Andres
- Name of Field or Pool (If applicable) Lovington San Andres
- Is this a new well drilled for injection? No  
If no, for what purpose was the well originally drilled? Production
- Has the well ever be perforated in any other zone(s)? List all such perforated intervals and give plugging detail (sacks of cement or bridge plug(s) used). NO
- Give the depth to and name of any overlying and/or underlying oil or gas zones (pools) in this area.

Underlying-Grayburg

# INJECTION WELL DATA SHEET

Greenhill Petroleum Corporation		Lovington San Andres Unit		
OPERATOR		LEASE		
#43	1980 FNL & 660 FWL	1	T17S	R36E
WELL NO.	FOOTAGE LOCATION	SEC.	TOWNSHIP	RANGE

## Tubular Data

### Surface Casing

Size: 13" Cemented with 200 SX

TOC: Surface feet determined by circulation

Hole size: 17 1/2

### Intermediate Casing

Size: 8 5/8" Cemented with 600 SX

TOC: 199 feet determined by 50% calc

Hole Size: 11"

### Long String

Size: 5 1/2" Cemented with 350 SX

TOC: 2679 feet determined by 80% calc

Hole Size: 7 7/8"

Total Depth: 4990'

### Injection Interval

4546 feet to 5030 feet  
(perforated or open-hole, indicate which)

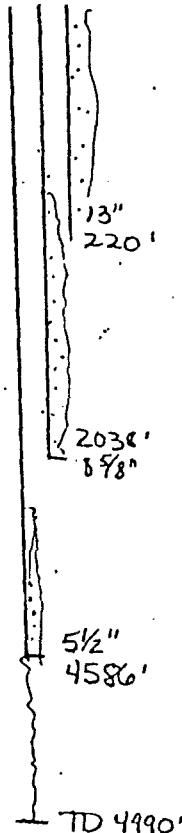
Tubing size 2 3/8 lined with IPC set in a  
(material)  
packer at 4536 feet.  
(brand & model)  
(or describe any other casing-tubing seal).

## Other Data

- Name of the injection formation \_\_\_\_\_
- Name of Field or Pool (If applicable) Lovington San Andres
- Is this a new well drilled for injection? No  
If no, for what purpose was the well originally drilled? Production
- Has the well ever be perforated in any other zone(s)? List all such perforated intervals and give plugging detail (sacks of cement or bridge plug(s) used).  
No
- Give the depth to and name of any overlying and/or underlying oil or gas zones (pools) in this area.  
Underlying - Grayburg

Completed  
6/19/41

Deepen to 5030'



# INJECTION WELL DATA SHEET

Greenhill Petroleum Corporation		Lovington San Andres Unit		
OPERATOR		LEASE		
#40	1980 FNL & 660 FEL	1	T17S	R36E
WELL NO.	FOOTAGE LOCATION	SEC.	TOWNSHIP	RANGE

## Tubular Data

### Surface Casing

Size: 13 " Cemented with 100 SX  
 TOC: Surface feet determined by circulation  
 Hole size: 17 1/4"

### Intermediate Casing

Size: 8 5/8" Cemented with 600 SX  
 TOC: 1050 feet determined by calc 50%  
 Hole Size: 11"

### Long String

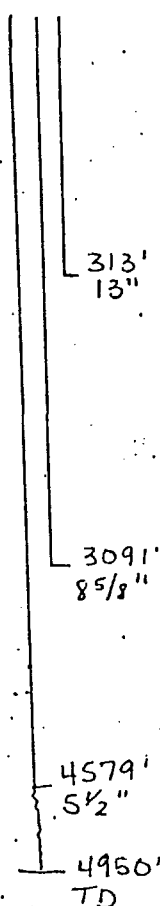
Size: 5 1/2" Cemented with 300 SX  
 TOC: 3680 feet determined by calc 80%  
 Hole Size: 7 7/8"

Total Depth: 4950'

### Injection Interval

4579 feet to 4950 feet  
 (perforated or open-hole, indicate which)

Completed  
12/4/39



Tubing size 2 3/8 lined with IPC (material) set in a  
 packer at 4579 feet.  
 (brand & model)  
 (or describe any other casing-tubing seal).

## Other Data

- Name of the injection formation San Andres
- Name of Field or Pool (If applicable) Lovington San Andres
- Is this a new well drilled for injection? No  
 If no, for what purpose was the well originally drilled? Production
- Has the well ever be perforated in any other zone(s)? List all such perforated intervals and give plugging detail (sacks of cement or bridge plug(s) used).  
No
- Give the depth to and name of any overlying and/or underlying oil or gas zones (pools) in this area.

Underlying-Grayburg

# INJECTION WELL DATA SHEET

Greenhill Petroleum Corporation		Lovington San Andres		
OPERATOR		LEASE		
#45	1980' FNL & 1980' FEL	2	17S	36E
WELL NO.	FOOTAGE LOCATION	SEC.	TOWNSHIP	RANGE

## Tubular Data

Completed  
5-26-43

230'  
13"  
  
2051'  
8 5/8"  
  
4577'  
5 1/2"  
  
5177'  
TD

### Surface Casing

Size: 13 " Cemented with 175 SX

TOC: Surface feet determined by circ

Hole size: 17"

### Intermediate Casing

Size: 8-5/8 " Cemented with 600 SX

TOC: 213 feet determined by calc

Hole Size: 11"

### Long String

Size: 5-1/2 " Cemented with 400 SX

TOC: 2396 feet determined by calc

Hole Size: 7-7/8"

Total Depth: 5147'

### Injection Interval

4577 feet to 5147 feet  
(perforated or open-hole, indicate which)

Tubing size 2 3/8 - lined with IPC (material) set in a  
packer at 4527 feet.  
(brand & model)  
(or describe any other casing-tubing seal).

## Other Data

- Name of the injection formation
- Name of Field or Pool (If applicable) Lovington San Andres
- Is this a new well drilled for injection? No  
If no, for what purpose was the well originally drilled? Production
- Has the well ever be perforated in any other zone(s)? List all such perforated intervals and give plugging detail (sacks of cement or bridge plug(s) used.  
NO
- Give the depth to and name of any overlying and/or underlying oil or gas zones (pools) in this area.

Underlying-Grayburg



# INJECTION WELL DATA SHEET

Greenhill Petroleum Corporation		Lovington San Andres		
OPERATOR		LEASE		
#37	330' FNL & 990' FEL	6	17S	37E
WELL NO.	FOOTAGE LOCATION	SEC.	TOWNSHIP	RANGE

## Tubular Data

Completed  
7-24-46

### Surface Casing

Size: 13 " Cemented with 20 SX

TOC: Surface feet determined by circ

Hole size: 15"

### Intermediate Casing

Size: 7-5/8 " Cemented with 500 SX

TOC: Surface feet determined by calc

Hole Size: 9-3/4"

### Long String

Size: 5-1/2 " Cemented with 290 SX

TOC: Surface feet determined by calc

Hole Size: 6-1/4"

Total Depth: 4943'

### Injection Interval

4560 — feet to 5030 — feet  
(perforated or open-hole, indicate which)

Tubing size 2 7/8 — lined with IPC set in a  
(material)  
packer at 4510 feet.  
(brand & model)  
(or describe any other casing-tubing seal).

## Other Data

- Name of the injection formation San Andres
- Name of Field or Pool (If applicable) Lovington San Andres
- Is this a new well drilled for injection? No  
If no, for what purpose was the well originally drilled? Production
- Has the well ever be perforated in any other zone(s)? List all such perforated intervals and give plugging detail (sacks of cement or bridge plug(s) used. NO
- Give the depth to and name of any overlying and/or underlying oil or gas zones (pools) in this area.

Underlying-Grayburg

## INJECTION WELL DATA SHEET

Greenhill Petroleum Corporation		Lovington San Andres		
OPERATOR		LEASE		
#35	339' FNL & 1890' FWL	6	17S	37E
WELL NO.	FOOTAGE LOCATION	SEC.	TOWNSHIP	RANGE

## Tubular Data

Completed  
5-4-39

Deepen to 5040

<div style="display: flex; align-items: center;"> <div style="border-left: 1px solid black; border-right: 1px solid black; width: 20px; height: 300px; margin-right: 5px;"></div> <div style="display: flex; flex-direction: column; justify-content: space-around;"> <div>323'</div> <div>13"</div> <div>2950'</div> <div>9 5/8"</div> <div>4570'</div> <div>7"</div> <div>4942'</div> <div>TD</div> </div> </div>	Surface Casing
	Size: 13" Cemented with 200 SX
	TOC: Surface feet determined by circ
	Hole size: 17-1/4"
	Intermediate Casing
	Size: 9-5/8" Cemented with 400 SX
	TOC: 1644 feet determined by calc
	Hole Size: 12"
	Long String
	Size: 7" Cemented with 300 SX
TOC: 1789 feet determined by calc	
Hole Size: 8-3/4"	
Total Depth: 4942'	
Injection Interval	
4570 — feet to 5040 — feet (perforated or open-hole, indicate which)	

Tubing size 2 3/8 — lined with JPC set in a  
(material)  
packer at 4520 feet.  
(brand & model)  
(or describe any other casing-tubing seal).

## Other Data

- Name of the injection formation San Andres
- Name of Field or Pool (If applicable) Lovington San Andres
- Is this a new well drilled for injection? No  
If no, for what purpose was the well originally drilled? Production
- Has the well ever be perforated in any other zone(s)? List all such perforated intervals and give plugging detail (sacks of cement or bridge plug(s) used).  
NO
- Give the depth to and name of any overlying and/or underlying oil or gas zones (pools) in this area.  
Underlying-Grayburg

## INJECTION WELL DATA SHEET

Greenhill Petroleum Corporation		Lovington San Andres		
OPERATOR		LEASE		
#35	339' FNL & 1890' FWL	6	17S	37E
WELL NO.	FOOTAGE LOCATION	SEC.	TOWNSHIP	RANGE

## Tubular Data

Completed  
5-4-39

Deepen to 5040

<div style="display: flex; align-items: center;"> <div style="border-left: 1px solid black; border-right: 1px solid black; width: 2px; height: 350px; margin-right: 5px;"></div> <div style="display: flex; flex-direction: column; justify-content: space-around; align-items: center;"> <div>323'</div> <div>13"</div> <div>2450'</div> <div>9 5/8"</div> <div>4570'</div> <div>7"</div> <div>4942'</div> <div>TD</div> </div> </div>	<u>Surface Casing</u>
	Size: <u>13</u> " Cemented with <u>200</u> SX
	TOC: <u>Surface</u> feet determined by <u>circ</u>
	Hole size: <u>17-1/4"</u>
	<u>Intermediate Casing</u>
	Size: <u>9-5/8"</u> " Cemented with <u>400</u> SX
	TOC: <u>1644</u> feet determined by <u>calc</u>
	Hole Size: <u>12"</u>
	<u>Long String</u>
	Size: <u>7</u> " Cemented with <u>300</u> SX
TOC: <u>1789</u> feet determined by <u>calc</u>	
Hole Size: <u>8-3/4"</u>	
Total Depth: <u>4942'</u>	
<u>Injection Interval</u>	
<u>4570</u> — feet to <u>5040</u> — feet (perforated or open-hole, indicate which)	

Tubing size 2 7/8 " — lined with IPC set in a  
(material)  
packer at 4520 feet.  
(brand & model)  
(or describe any other casing-tubing seal).

## Other Data

- Name of the injection formation San Andres
- Name of Field or Pool (If applicable) Lovington San Andres
- Is this a new well drilled for injection? No  
If no, for what purpose was the well originally drilled? Production
- Has the well ever be perforated in any other zone(s)? List all such perforated intervals and give plugging detail (sacks of cement or bridge plug(s) used).  
NO
- Give the depth to and name of any overlying and/or underlying oil or gas zones (pools) in this area.  
Underlying-Grayburg

# INJECTION WELL DATA SHEET

Greenhill Petroleum Corporation		Lovington San Andres Unit		
OPERATOR		LEASE		
#39	1985 FNL & 616 FWL	6	T17S	R37E
WELL NO.	FOOTAGE LOCATION	SEC.	TOWNSHIP	RANGE

## Tubular Data

### Surface Casing

Size: 13 " Cemented with 200 SX

TOC: Surface feet determined by circulation

Hole size: 15"

### Intermediate Casing

Size: 9 5/8 " Cemented with 500 SX

TOC: 1506 feet determined by 50% calc

Hole Size: 12"

### Long String

Size: 7 " Cemented with 200 SX

TOC: 3265 feet determined by 80% calc

Hole Size: 8 3/4

Total Depth: 4945'

### Injection Interval

4522 feet to 4975 feet  
(perforated or open-hole, indicate which)

Tubing size 2 3/8 lined with IPC set in a  
(material)  
packer at 4570 feet.  
(brand & model)  
(or describe any other casing-tubing seal).

## Other Data

- Name of the injection formation San Andres
- Name of Field or Pool (If applicable) Lovington San Andres
- Is this a new well drilled for injection? No  
If no, for what purpose was the well originally drilled? Production
- Has the well ever be perforated in any other zone(s)? List all such perforated intervals and give plugging detail (sacks of cement or bridge plug(s) used).  
No
- Give the depth to and name of any overlying and/or underlying oil or gas zones (pools) in this area.  
Underlying - Grayburg

Completed  
10/28/39