

## MERRION OIL &amp; GAS CORPORATION

610 REILLY AVE. • P. O. Box 840  
FARMINGTON, NEW MEXICO 87499

100 DEC 11 PM 8 57

December 10, 1990

*vertical - unorthodox  
possibly vertical  
completion*

State of New Mexico  
Energy and Minerals Department  
N. M. Oil Conservation Division  
P. O. Box 2088  
Santa Fe, New Mexico 87501

10196

Attention: Mr. Michael Stogner, Hearing Examiner

Subject: Federal 28 No. 1, Application for Approval to Drill  
Horizontally at an Unorthodox Surface Location and for  
an Unorthodox Bottom Hole Well Location, McKinley County,  
New Mexico

Merrion Oil & Gas Corporation hereby applies for an Order of the New Mexico Oil Conservation Division authorizing a pilot project to first drill vertically, then plug back and directionally drill horizontally through the Entrada formation, at an unorthodox surface location which is 750' FNL and 2450' FEL of Sec. 28, T20N, R5W, N.M.P.M., McKinley County, New Mexico. (See attached structure map.) The horizontal wellbore will be drilled in a southeasterly direction within a target area which may be described as a rectangle 1,320' wide and 1,200' long, the northern side of which is located 550' from the north line of Section 28, with the western side formed by the half section line of Section 28. The producing interval of the Entrada in the horizontal portion of the wellbore will be located in an 80 acre area consisting of the NW/4 of the NE/4 and the SW/4 of the NE/4 of Section 28. In addition, Merrion Oil & Gas Corporation hereby applies for an Order approving an unorthodox bottom hole oil well location for the subject well within the previously described target area.

The horizontal well is proposed to be drilled using a medium radius-of-curvature. The wellbore should penetrate the Entrada at approximately 950' FNL and 2,120' FEL of Section 28, T20N, R5W, and continue 870' to a terminus at about 1,400' FNL and 1,380' FEL of the same section.

N. M. Oil Conservation Division  
December 10, 1990


Page 2

Merrion Oil & Gas Corporation hereby requests that this application be placed on the New Mexico Oil Conservation Division's January 10, 1991 Examiner Hearing Docket.

Enclosed are two additional copies of this letter application.

Sincerely,

MERRION OIL & GAS CORPORATION



Steven S. Dunn  
Operations Manager

SSD/lls

Enclosures

cc: Mr. Tommy Roberts  
P. O. Box 129  
Farmington, NM 87499

Mr. Frank Chavez, Supervisor  
District Three Office  
N. M. Oil Conservation Division  
1000 Rio Brazos  
Aztec, NM 87410

Well File

Sec. 21

R5W

MERRION OIL & GAS CORPORATION

OJO ENCINO FIELD  
McKINLEY COUNTY, NEW MEXICO

ENTRADA STRUCTURE

CI. - 10 FT.  
SCALE - 1" = 300 FEET

12/10/90

FEDERAL 21-4

Section Line

HIGH

(Proposed Surface Location)  
FEDERAL 28 No. 1

Horizontal Well

LEGEND

FEDERAL 28-1 (PROPOSED WELL)

SUBSURFACE WELLBORE TRACE

TARGET AREA

PRORATION UNIT

Sec. 28

T  
25  
N

## MERRION OIL &amp; GAS CORPORATION

610 REILLY AVE. • P. O. Box 840

FARMINGTON, NEW MEXICO 87499

December 10, 1990

State of New Mexico  
Energy and Minerals Department  
N. M. Oil Conservation Division  
P. O. Box 2088  
Santa Fe, New Mexico 87501

Attention: Mr. Michael Stogner, Hearing Examiner

Subject: Federal 28 No. 1, Application for Approval to Drill  
Horizontally at an Unorthodox Surface Location and for  
an Unorthodox Bottom Hole Well Location, McKinley County,  
New Mexico

Merrion Oil & Gas Corporation hereby applies for an Order of the New Mexico Oil Conservation Division authorizing a pilot project to first drill vertically, then plug back and directionally drill horizontally through the Entrada formation, at an unorthodox surface location which is 750' FNL and 2450' FEL of Sec. 28, T20N, R5W, N.M.P.M., McKinley County, New Mexico. (See attached structure map.) The horizontal wellbore will be drilled in a southeasterly direction within a target area which may be described as a rectangle 1,320' wide and 1,200' long, the northern side of which is located 550' from the north line of Section 28, with the western side formed by the half section line of Section 28. The producing interval of the Entrada in the horizontal portion of the wellbore will be located in an 80 acre area consisting of the NW/4 of the NE/4 and the SW/4 of the NE/4 of Section 28. In addition, Merrion Oil & Gas Corporation hereby applies for an Order approving an unorthodox bottom hole oil well location for the subject well within the previously described target area.

The horizontal well is proposed to be drilled using a medium radius-of-curvature. The wellbore should penetrate the Entrada at approximately 950' FNL and 2,120' FEL of Section 28, T20N, R5W, and continue 870' to a terminus at about 1,400' FNL and 1,380' FEL of the same section.

N. M. Oil Conservation Division  
December 10, 1990


Page 2

Merrion Oil & Gas Corporation hereby requests that this application be placed on the New Mexico Oil Conservation Division's January 10, 1991 Examiner Hearing Docket.

Enclosed are two additional copies of this letter application.

Sincerely,

MERRION OIL & GAS CORPORATION



Steven S. Dunn  
Operations Manager

SSD/lls

Enclosures

cc: Mr. Tommy Roberts  
P. O. Box 129  
Farmington, NM 87499

Mr. Frank Chavez, Supervisor  
District Three Office  
N. M. Oil Conservation Division  
1000 Rio Brazos  
Aztec, NM 87410

Well File



MERRION OIL & GAS CORPORATION

030 ENCINO FIELD  
MCKINLEY COUNTY, NEW MEXICO

ENTRADA STRUCTURE

CI. - 10 FT.  
SCALE - 1" = 300 FEET

12/10/90

FEDERAL 21-4

Sec. 21

R5W

Section Line

HIGH

+920

+900

(Proposed Surface Location)  
FEDERAL 28 No. 1

HORIZONTAL WELL

Half Section Line

LEGEND

FEDERAL 28-1 (PROPOSED WELL)

SUBSURFACE WELLBORE TRACE

TARGET AREA

PROBATION UNIT



T  
25  
N

760

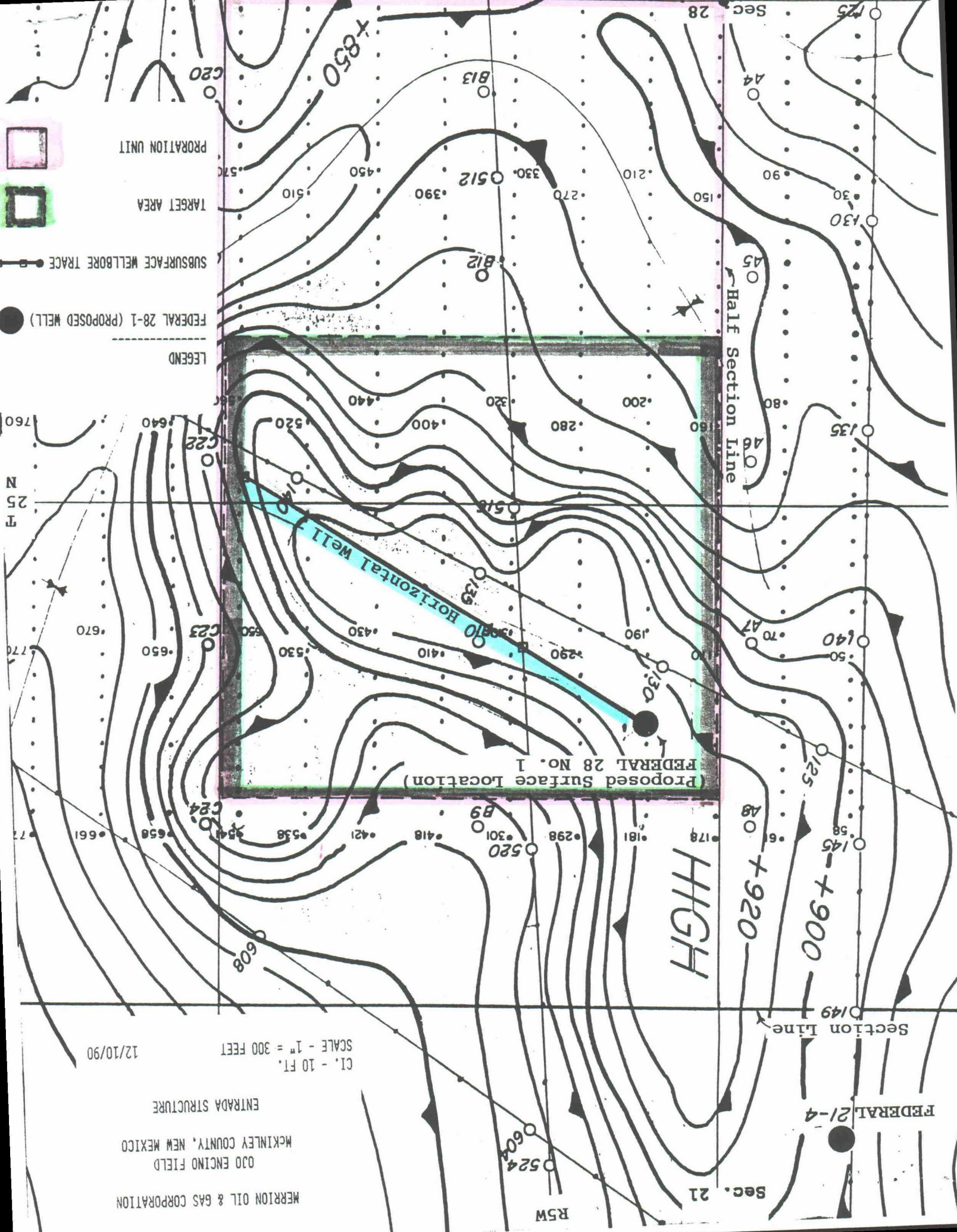
770

770

770

770

770



## MERRION OIL &amp; GAS CORPORATION

610 REILLY AVE. • P. O. Box 840  
FARMINGTON, NEW MEXICO 87499

December 10, 1990

State of New Mexico  
Energy and Minerals Department  
N. M. Oil Conservation Division  
P. O. Box 2088  
Santa Fe, New Mexico 87501

Attention: Mr. Michael Stogner, Hearing Examiner

Subject: Federal 28 No. 1, Application for Approval to Drill  
Horizontally at an Unorthodox Surface Location and for  
an Unorthodox Bottom Hole Well Location, McKinley County,  
New Mexico

Merrion Oil & Gas Corporation hereby applies for an Order of the New Mexico Oil Conservation Division authorizing a pilot project to first drill vertically, then plug back and directionally drill horizontally through the Entrada formation, at an unorthodox surface location which is 750' FNL and 2450' FEL of Sec. 28, T20N, R5W, N.M.P.M., McKinley County, New Mexico. (See attached structure map.) The horizontal wellbore will be drilled in a southeasterly direction within a target area which may be described as a rectangle 1,320' wide and 1,200' long, the northern side of which is located 550' from the north line of Section 28, with the western side formed by the half section line of Section 28. The producing interval of the Entrada in the horizontal portion of the wellbore will be located in an 80 acre area consisting of the NW/4 of the NE/4 and the SW/4 of the NE/4 of Section 28. In addition, Merrion Oil & Gas Corporation hereby applies for an Order approving an unorthodox bottom hole oil well location for the subject well within the previously described target area.

The horizontal well is proposed to be drilled using a medium radius-of-curvature. The wellbore should penetrate the Entrada at approximately 950' FNL and 2,120' FEL of Section 28, T20N, R5W, and continue 870' to a terminus at about 1,400' FNL and 1,380' FEL of the same section.

N. M. Oil Conservation Division  
December 10, 1990

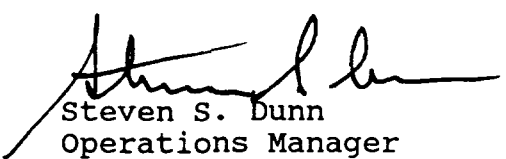
Page 2

Merrion Oil & Gas Corporation hereby requests that this application be placed on the New Mexico Oil Conservation Division's January 10, 1991 Examiner Hearing Docket.

Enclosed are two additional copies of this letter application.

Sincerely,

MERRION OIL & GAS CORPORATION



Steven S. Dunn  
Operations Manager

SSD/lls

Enclosures

cc: Mr. Tommy Roberts  
P. O. Box 129  
Farmington, NM 87499

Mr. Frank Chavez, Supervisor  
District Three Office  
N. M. Oil Conservation Division  
1000 Rio Brazos  
Aztec, NM 87410

Well File



050x



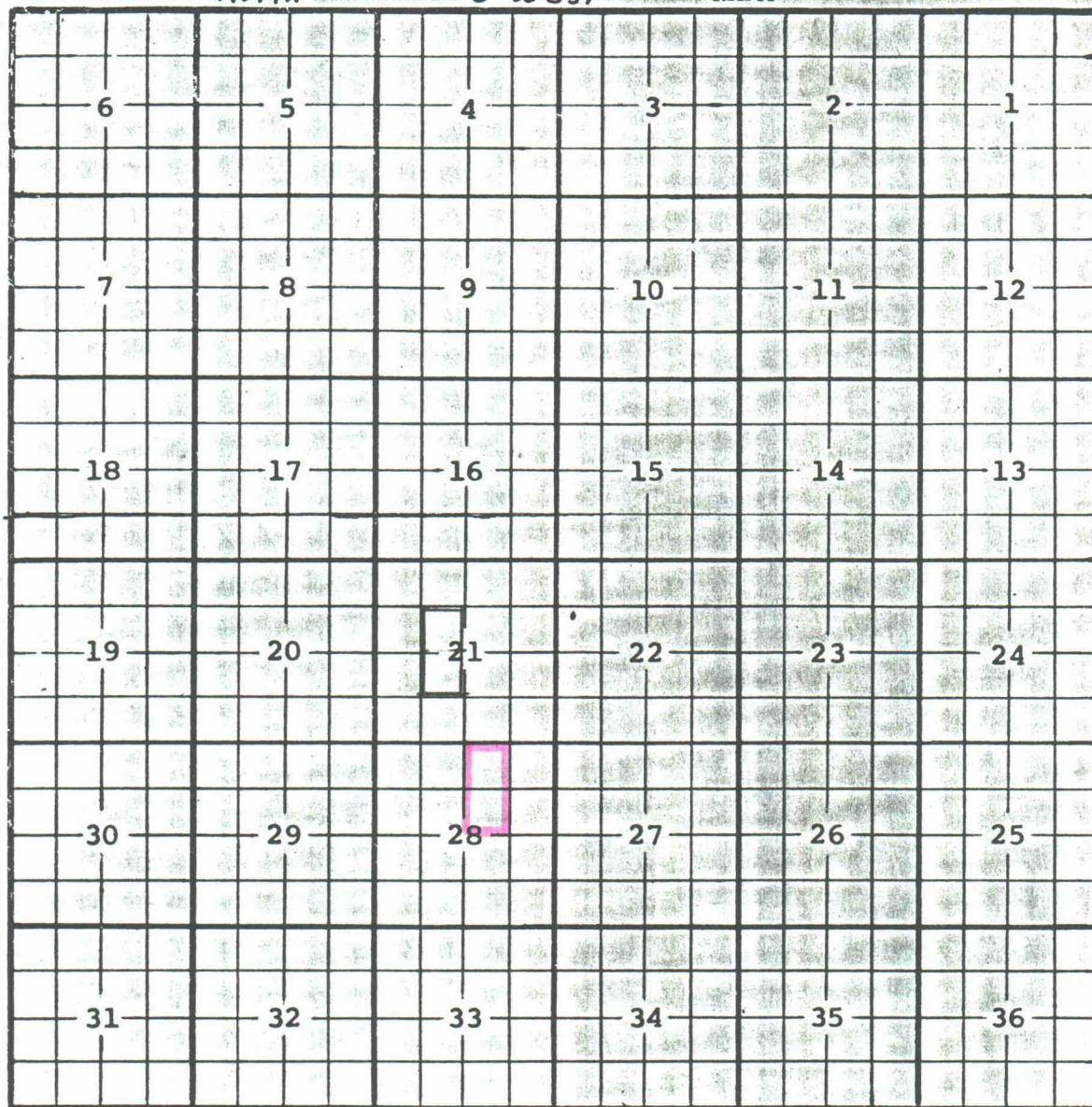
COUNTY McKinley

POOL Ojo Encino-Entrada Oil

TOWNSHIP 20 North

RANGE 5 West

NMPM



Description: SE/4 NW/4 & NE/4 SW/4 Sec 21 (R-5330, 12-1-76)

Sec. 28 Township No. 20 North of Range No. 5 West

