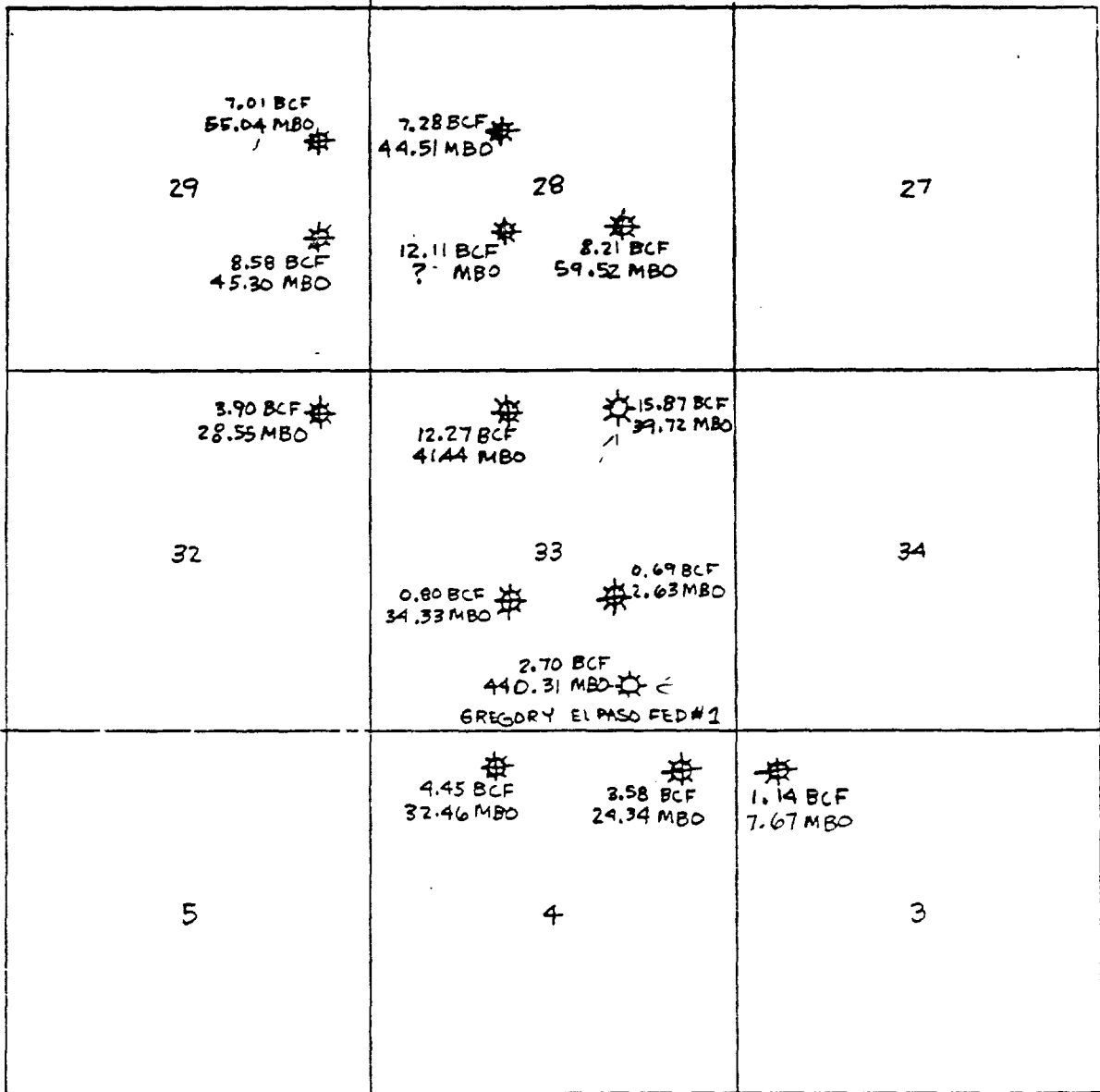


CROSBY DEVONIAN FIELD
LEA COUNTY, NEW MEXICO

? BCF
2.69 BCF
17.29 MBO *
35.61 MBO *
37E



255

265

42-182 100 SHEETS
NATIONAL
MEXICO S.A.

UNION EXPLORATION COMPANY
IN CONNECTION WITH
UTP No. 1
8874

- * ABANDONED (GAS)
- ⊙ PRODUCER (GAS)
- * ABANDONED (OIL)

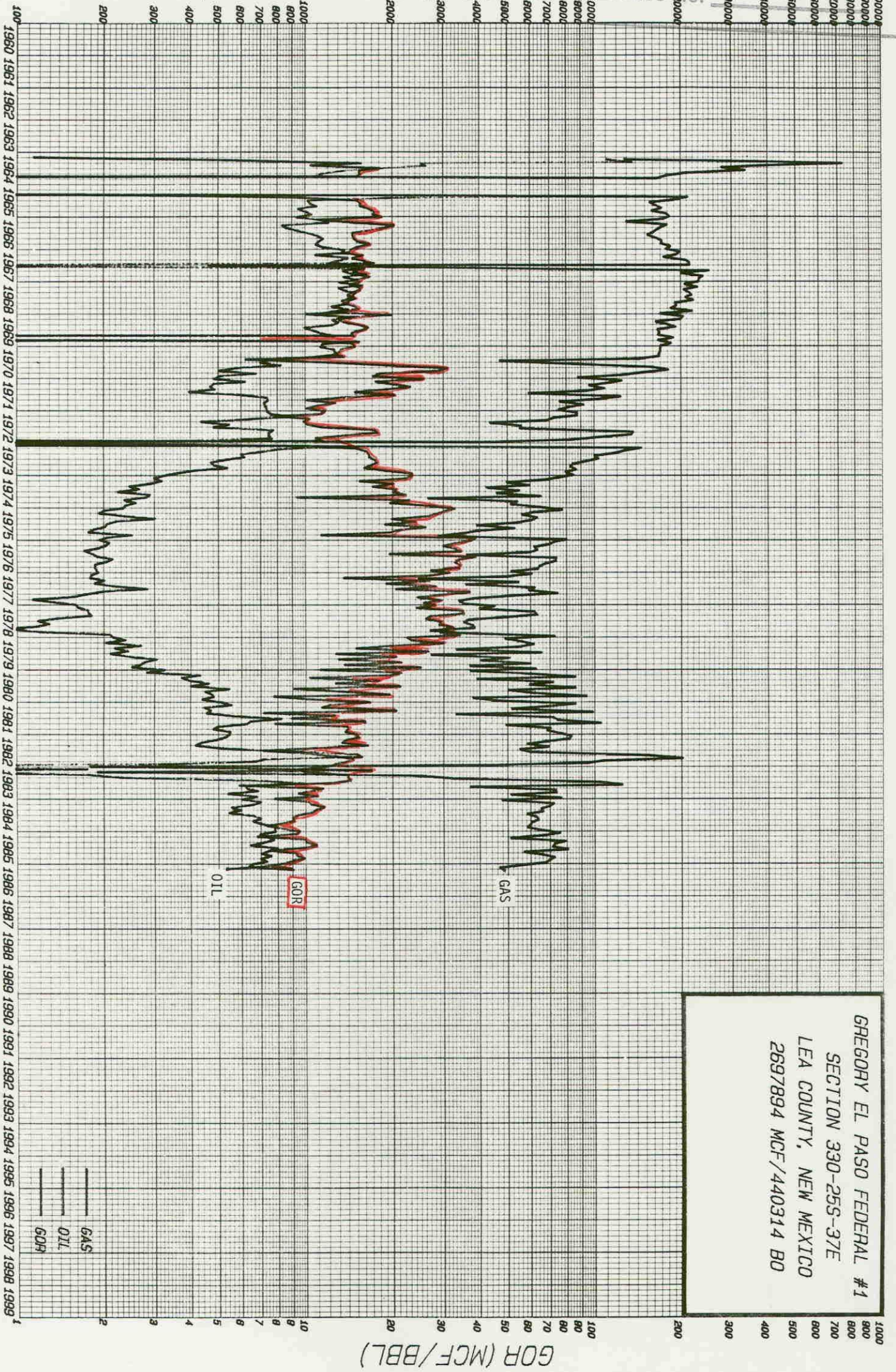
BEFORE EXAMINER STOGNER

Oil Conservation Division

UTP Exhibit No. 2

8874

GAS (MCF PER MONTH) / OIL (BO PER MONTH)



PRODUCTION YEAR

GREGORY EL PASO FEDERAL #1
SECTION 330-255-37E
LEA COUNTY, NEW MEXICO
2697894 MCF/440314 BO

GOR (MCF/BBL)

— GAS
— OIL
— GOR

RECEIVING DELIVERY

DATE 02 11 19 86 TICKET NO. 015745

REC. FROM DEL. TO: *Gregory*
 DIST. AND LOCATION: *Gregory*
 LEASE AND PROP. NO.: *7363*
 FOR ACCOUNT: *ARLO*
 PROD. OR GRADE: *22/41*

PLDP NO. 0055
 7363

EASE/UNIT: *Gregory*
 OPERATOR: *UTP*
 DISTRICT: *UTP*
 GAUGED BY: *UTP*
 1986

BATCH NO. *02* VAPOR ZONE PSI *0*

REMARKS: *UTP*

TANK OR METER NO. *17465* TANK SIZE *1ST RUN*

	FT.	GAUGE		TEMP. TANK OF LINE	% S. & W.	GROSS BARRELS
		SEC. OR IN.	FRACT.			
1st GAU.	150	63/4		35.0	10	
2nd GAU.	102	2/0		35		

OBSERVED: *32034* NET

INCORUSTATION FACTOR: *1.00000*

VOL. SH. FACTOR: *1.00000*

METER FACTOR: *1.00000*

CLOSING & OPENING METER READING	
FACTOR DATE	<i>X</i>
TEMP. DIFF.	

NET BARRELS

TURNED ON: Date *2-11* Time *12:30 P.M.* *Gregory*
 OFF SEAL NO. *252268* *11632*

TURNED OFF: Date *2-13* Time *7 P.M.* *Gregory*
 ON SEAL NO. *253223*

OIL RECEIVED FOR TRANSPORTATION, SUBJECT TO TARIFF RULES AND REGULATIONS OF TEXAS-NEW MEXICO PIPE LINE CO.

BEFORE EXAMINER STOGNER
 Oil Conservation Division
 UTP Exhibit No. 3
 Case No. 8874

Gregory 21 2050 Td

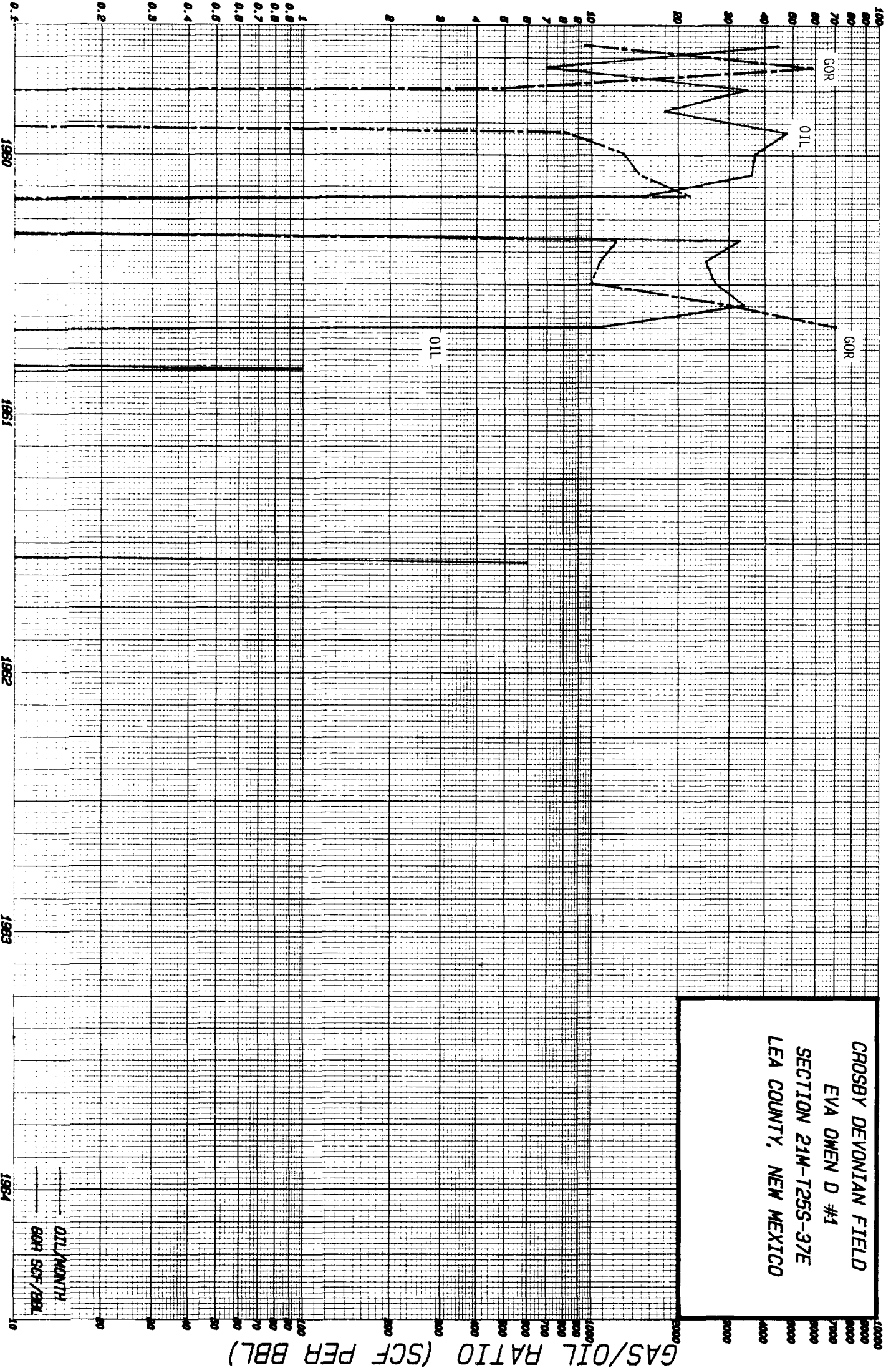
ENGINEER EXAMINED DESIGNER

Oil Department Division

UTP Permit No. 4

Case No. 8874

OIL PRODUCTION (BBL PER MONTH)



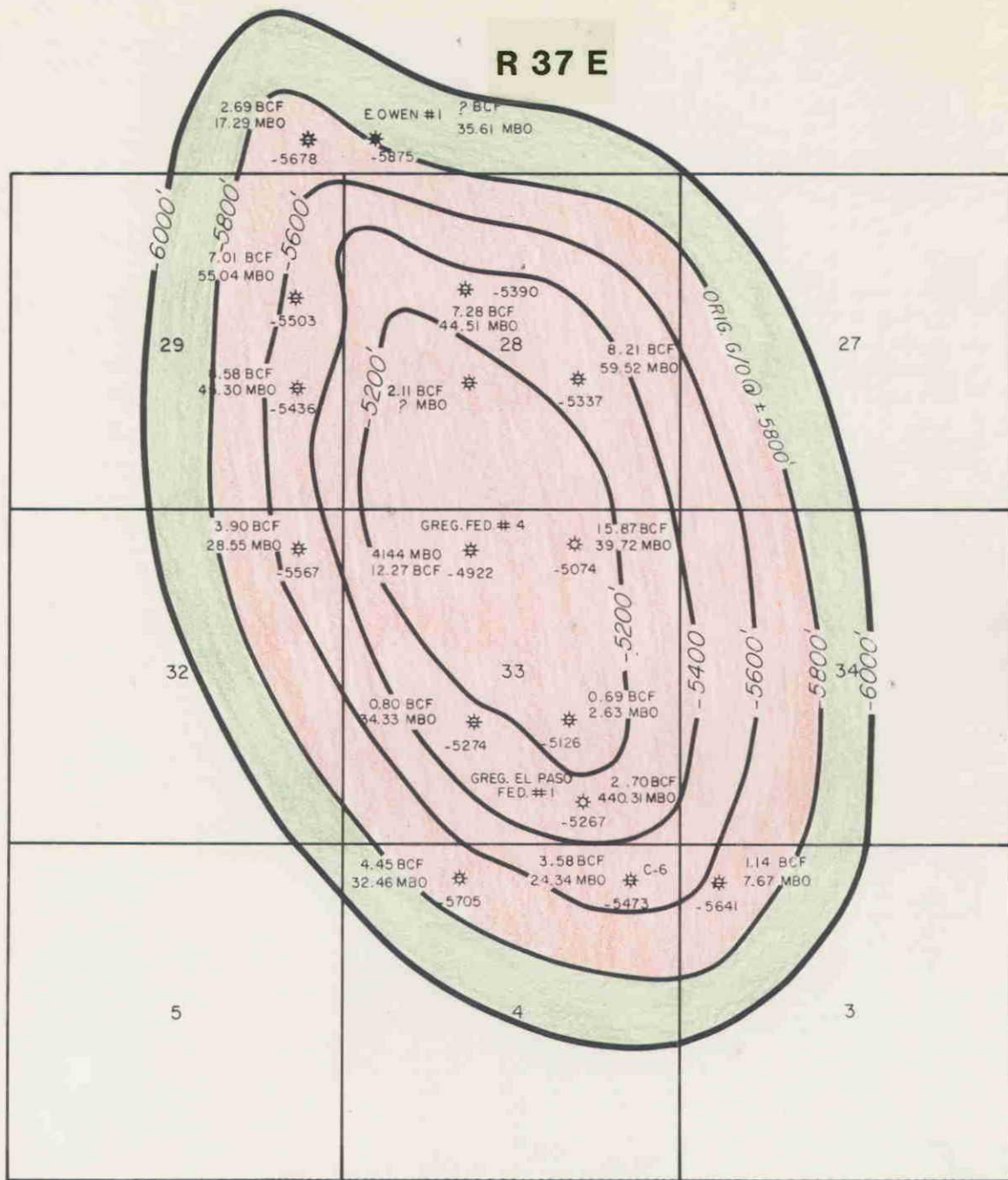
PRODUCTION YEAR

CROSBY DEVONIAN FIELD
EVA OWEN D #1
SECTION 21M-125S-37E
LEA COUNTY, NEW MEXICO

OIL/MONTH
GOR SCF/BBL

GAS/OIL RATIO (SCF PER BBL)

R 37 E



T 25 S

- * ABANDONED (GAS)
- * PRODUCER (GAS)
- * ABANDONED (OIL)

BEFORE EXAMINER STOGNER
 Oil Conservation Division
 UTP Exhibit No. 5
 Case No. 8874

CROSBY DEVONIAN FIELD
LEA COUNTY, NEW MEXICO



Union Texas Petroleum

April 9, 1986

Chevron U.S.A., Inc.
P.O. Box 670
Hobbs, NM 88240

RE: Crosby Devonian Field
Lea County, N.M.

Gentlemen:

Union Texas has requested the above captioned well to be reclassified from a gas well to an oil well and the pool established as one associated pool, based on a current GOR of 9630/1. El Paso has currently shut in this well due to market demand. We feel the subject well produces too much oil to be shut-in for gas market demand.

In accordance with general rules of Order 5353, you are notified of our request and we request your approval by signing and returning one copy prior to 4/18/86.

Your G.W. Shahan ^{*2} #1 well is the only other well in this pool.

If you have any questions, please call Ken White at 915-684-0600.

Best regards,

Dennis H. Cowan
Manager Regulatory &
Environmental Services

DHC:jo

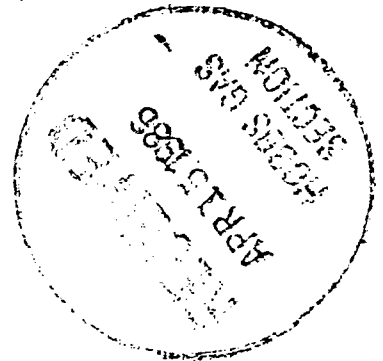
Chevron, U.S.A., Inc.

Signed



Western Region

4000 N. Big Spring
Midland, Texas 79705
Telephone (915) 684-0600



RECEIVED

MAY 1 1986

REGULATORY
WESTERN REGION

UTP

6

8874

APRIL, 1986

STATE

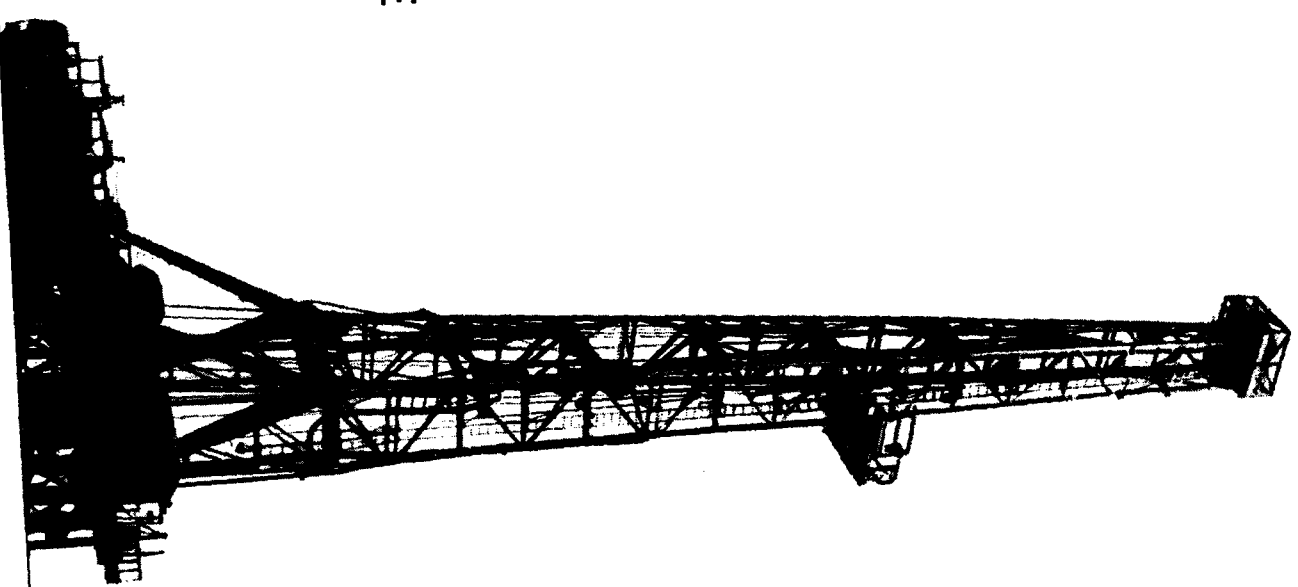
ORDER NO. AG-51-1

OF

NEW MEXICO

ENERGY AND MINERALS DEPARTMENT
OIL CONSERVATION DIVISION

SOUTHEAST GAS PRORATION SCHEDULE



AMOCO PIPELINE CO. CORPORATION
 AMERICAL CRUDE OIL CORPORATION
 AMERADA HESS CORPORATION
 AMOCO PRODUCTION CO
 ANADARKO PET. CORP.
 ROBERT C. ANDERSON
 AZTEC OIL AND GAS REFINING COMPANY
 ASHLAND OIL AND REFINING COMPANY
 AMERADA PETROLEUM CORPORATION
 ARCO PIPELINE CO
 ASHLAND CHEMICAL COMPANY
 ATLANTIC RICHFIELD COMPANY
 AZTEC ENERGY CORP.
 BASIN INC. INCORPORATED
 BARBER OIL. INCORPORATED
 PERRY R. BASS
 BCO INCORPORATED
 BERT FIELDS INCORPORATED
 BASIN FUELS INCORPORATED
 BENSON MOUNTAIN GREER DRILLING CORPORATION
 BROKEN HILLS PETROLEUM
 BASIC SEDIMENT AND WATER
 CABOT CORPORATION
 CABOT CRUDE OIL
 CARIBOU FOUR CORNERS OIL INCORPORATED
 COLORADO INTERSTATE GAS CO.
 CITIES SERVICE OIL COMPANY
 CABOT PIPELINE
 CONOCO INC
 COMPTON CORP
 CONTINENTAL OIL COMPANY
 COQUINA
 CO2
 CHALA CRYOGENICS
 CITIES SERVICE OIL AND GAS CORP.
 CONOCO, INC. SURFACE TRANSPORTATION
 DAVID F. ASKEN
 DAKOTA RESOURCES, INC.
 J. L. DAVIS
 DELHI GAS PIPELINE CORP
 DOMINE PETROLEUM CORP
 DUGAN PRODUCTION CORPORATION
 DRILLING GAS
 EL PASO NATURAL GAS COMPANY
 FAMARISS OIL AND REFINING COMPANY
 FOUR CORNERS PIPELINE COMPANY
 FLORIDA HYDROCARBON CO.
 GULF ENERGY
 GIANT INDUSTRIES, INC
 GAS LIFT
 GIANT REFINERY
 GANDY CORPORATION
 GENERAL AMERICAN OIL CO. OF TEXAS
 GARY ENERGY CORPORATION
 GAVILLAN JOINT VENTURE
 GULF REFINING COMPANY
 GAS CO. OF NEW MEXICO
 GRAYES OIL COMPANY
 GRACE PETROLEUM CORP.
 GENERAL PETROLEUM INCORPORATED
 GETTY TRADING AND TRANSPORTATION CO.
 HAMON OIL CO.
 THE HARLOW CORPORATION
 HNG OIL CO.
 INTRASTATE GATHERING CORP.
 INLAND CORPORATION
 JEM RESOURCES, INC.
 JAKE L. HAMON
 J. M. PETROLEUM CORP.
 KOCH OIL CO
 LLANO INCORPORATED
 LIQUID ENERGY CORPORATION
 LIBRA ENERGY INCORPORATED
 LOST OIL OR GAS
 LANTERN PET. CORP.

ACD
 ADM
 AHC
 AMO
 ANA
 AND
 ANO
 AOK
 APC
 ARC
 ASH
 AZI
 B I
 B O
 BAS
 BCO
 BED
 BEL
 BMG
 BRD
 BSM
 C C
 C C
 C C
 C I
 C I
 COB
 COI
 COM
 CON
 COQ
 CO2
 CRY
 CSS
 CST
 D A
 DAV
 DEL
 DOM
 DPC
 DRG
 EPG
 FAM
 FCP
 FLE
 G I
 G L
 G R
 GAN
 GAO
 GEC
 GCV
 GJY
 GLT
 GNM
 GOC
 GPC
 GPT
 GII
 HAM
 HAR
 HNG
 HNC
 HGG
 HNL
 JEM
 JLN
 JLP
 JMC
 JOC
 JKC
 JLE
 LEC
 LIB
 LPS
 LUC
 USE ON LEASE OIL OR GAS
 MANCOS CORPORATION
 MAPCO INC.
 MARATHON OIL COMPANY
 MATADOR PIPELINES, INC.
 MCCOUGALD OIL COMPANY
 MERRISON OIL & GAS CORP.
 MESA PETROLEUM COMPANY
 MERIDIAN OIL, INC.
 MONSANTO COMPANY
 MERIDIAN OIL PRODUCTION, INC.
 NAVAJO PIPELINE
 NEW ENERGY COMPANY
 NORTHERN GAS GATHERING INC.
 NATURAL GAS PIPELINE COMPANY OF AMERICA
 NORTHERN NATURAL GAS COMPANY
 NORTHWEST PIPELINE CORP.
 NAVAJUO REFINING CO. PIPELINE DIVISION
 USE OF LEASE GAS
 PHILLIPS PETROLEUM COMPANY
 PETRO THERMO
 PETRO THERMO
 POTASH COMPANY OF AMERICA
 PETROLEUM CONSULTANTS INCORPORATED
 PERMIAN CORPORATION
 PETROLEUM ENERGY
 PLATEAU INCORPORATED
 PETRO LEWIS CORPORATION
 P&O FALCO, INC. CO
 PRIDE PIPELINE CO
 PECOS VALLEY, INC.
 GAS USED FOR REPRESSURING
 SOUTHERN UNION GAS COMPANY
 SOUTHLAND GATHERING COMPANY
 SHELL PIPELINE CORPORATION
 GAS SHRINKAGE
 SKELLY OIL COMPANY
 STATELINE LTD COMPANY
 SCURLOCK OIL COMPANY
 SPUR PIPELINE COMPANY
 SEVEN RIVERS FARM, INC.
 SUN REFINING AND MARKETING COMPANY
 STOLEN OIL
 SOUTHERN UNION GATHERING COMPANY
 SOUTHERN UNION CORPORATION
 SUMMIT TRANSPORTATION CO. CO
 SOUTHWEST GAS CORPORATION
 TESSORO CRUDE OIL CO
 TENNECO OIL COMPANY
 TEXACO INCORPORATED
 TIPPARY CORPORATION
 TEXAS NEW MEXICO PIPELINE COMPANY
 TEXAS OIL, INC.
 TESSORO PETROLEUM CORPORATION
 TEXACO PRODUCTING, INC.
 TIPPARY RESOURCES CORPORATION
 TIPPARY TRADING & TRANSPORTATION
 TEXACO
 TUCCO INC
 THRIFTWAY COMPANY
 TRANSMEXICAN PIPELINE COMPANY
 UNITED GAS PIPELINE CO.
 UNKNOWN
 UNION OIL CO OF CALIFORNIA
 UPG FALCO
 URIAH EXPLORATION INC. CORP.
 UNION TEXAS PETROLEUM CORP.
 VANDALISM
 VENTED OR UNACCOUNTED
 WARRREN PETROLEUM CORPORATION
 WESTERN CRUDE OIL INC
 WESTERN GAS INTERSTATE CO.
 WESTERN OIL TRANSPORTATION COMPANY, INC.
 WEST TEXAS GAS INC.
 HARVEY E. YATES CO.

STATE OF NEW MEXICO
ENERGY AND MINERALS DEPARTMENT
OIL CONSERVATION DIVISION

ORDER NO. AG-51-1

GAS PRORATION ORDER FOR THE MONTH
OF APRIL, 1986

This cause came on for public hearing before the Division's Examiner, Michael E. Stogner, at Santa Fe, New Mexico, at 8:15 a.m. on March 12, 1986, pursuant to legal notice for the purpose of setting the allowable production of gas from the following fifteen gas pools in Lea, Eddy, and Chaves Counties, New Mexico, for the month of April, 1986:

Atoka-Pennsylvanian, Buffalo Valley-Pennsylvanian, Burton Flats-Morrow, Burton Flats-Strawn, Carlsbad-Morrow South, Catclaw Draw-Morrow, Crosby-Devonian, Eumont, Indian Basin-Morrow, Indian Basin-Upper Pennsylvanian, Jalmat, Justis, Monument McKee-Ellenburger, and Tubb.

Now, on this 15th day of March, 1986, the Division Director, having considered the nominations of purchasers, the capacity of producing wells, and the recommendations of the Examiner, and being otherwise fully advised in the premises,

FINDS THAT:

(1) The total nomination of purchasers of gas produced from the above-listed fifteen gas pools for the month of April, 1986, is 7,797,233 Mcf. The individual pool nominations are as follows:

Atoka-Pennsylvanian	98,368 Mcf
Blinebry	644,464 Mcf
Buffalo Valley-Pennsylvanian	298,538 Mcf
Burton Flats-Morrow	263,340 Mcf
Burton Flats-Strawn	10,078 Mcf
Carlsbad-Morrow, South	632,213 Mcf
Catclaw Draw-Morrow	88,064 Mcf
Crosby-Devonian	6,098 Mcf
Eumont	1,413,515 Mcf
Indian Basin-Morrow	65,000 Mcf
Indian Basin-Upper Pennsylvanian	3,450,000 Mcf
Jalmat	441,737 Mcf
Justis	41,462 Mcf
Monument McKee-Ellenburger	48,791 Mcf
Tubb	295,565 Mcf

(2) The potential producing capacity of all gas wells in the fifteen gas pools listed above is in excess of the nominations of purchasers of gas, and in order to prevent waste and protect correlative rights, the production of gas from the

-2-
Order No. AG-51-1

listed fifteen gas pools should be limited, allocated, and distributed during the month of April, 1986.

(3) All the producing gas wells, together with the expected completed or recompleted wells in the fifteen gas pools listed above, can produce a total of 7,797,233 Mcf without causing waste during the month of April, 1986, and an allocation based upon such production would be reasonable and would protect correlative rights.

IT IS THEREFORE ORDERED THAT:

(1) For the month of April, 1986, the allowable production to be assigned the fifteen allocated gas pools in Lea, Eddy, and Chaves Counties, New Mexico, is as follows:

Atoka-Pennsylvanian	98,368 Mcf
Blinebry	644,464 Mcf
Buffalo Valley-Pennsylvanian	298,538 Mcf
Burton Flats-Morrow	263,340 Mcf
Burton Flats-Strawn	10,078 Mcf
Carlsbad-Morrow, South	632,213 Mcf
Catclaw Draw-Morrow	88,064 Mcf
Crosby-Devonian	6,098 Mcf
Eumont	1,413,515 Mcf
Indian Basin-Morrow	65,000 Mcf
Indian Basin-Upper Pennsylvanian	3,450,000 Mcf
Jalmat	441,737 Mcf
Justis	41,462 Mcf
Monument McKee-Ellenburger	48,791 Mcf
Tubb	295,565 Mcf

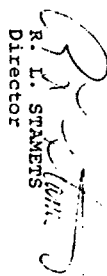
(2) The allocation hereby set for the month of April, 1986, in the fifteen allocated pools in Lea, Eddy, and Chaves Counties, New Mexico, shall be in accordance with the Division Rules, Regulations, and Orders.

(3) A proration schedule, duly prepared by the Division and thereafter adopted for the month of April, 1986, is hereto attached and made a part hereof; it distributes and allocates the allowable production among the gas wells in the fifteen gas pools listed above for the period stated, in accordance with the Division Rules, Regulations, and Orders.

The foregoing order shall remain effective until further order of the Division.

DONE at Santa Fe, New Mexico, on the day and year
hereinabove designated.

STATE OF NEW MEXICO
OIL CONSERVATION DIVISION


R. L. STAMMERS
Director

S E A L

SOUTHEAST GAS PRORATION SCHEDULE

EXPLANATION OF SYMBOLS

STATUS COLUMN

M MARGINAL - denotes a proration unit which is incapable of producing an allowable based on pool allocation factors. Marginal units receive allowable equal to the amount shown produced on the latest available monthly records. Marginal units do not accrue an over or under production status.

N NON-MARGINAL - denotes a proration unit receiving an allowable based upon pool allocation factors. Non-marginal proration units accrue over or under production.

AM or AN ALLOWABLE CANCELLED ON MARGINAL OR NON-MARGINAL PRORATION UNIT - denotes proration unit to be shut-in by the pipeline until released in writing by the Division.

NC NEW CONNECTION - denotes a proration unit producing prior to assignment of allowable.

(MWU) MULTIPLE WELL UNIT - denotes a well on a proration unit which contains more than one well.

AF (Acreage Factor) COLUMN

The number in this column is the ratio of the area of the subject proration unit to the area of a standard proration unit for the pool.

PRODUCTION COLUMN

R RECLASSIFIED - denotes a proration unit which has been reclassified "N" to "M" or "M" to "N", and the new classification is being shown for the first time.

AMT CANCEL (Amount cancelled) COLUMN

Volume in this column in the amount of the allowable which has been cancelled due to reclassification or failure of the well to produce its allowable.

AMT REDIST (Amount Redistributed) COLUMN

Volume in this column in the amount of the allowable which was cancelled from proration units in the pool and which is being reassigned to this proration unit.

O/U COLUMN

- A MINUS SIGN (-) - signifies that the preceding volume is accrued overproduction and no sign signifies that the preceding volume is accrued underproduction.

* OVER-PRODUCED VIOLATION - signifies that the following volume is accrued overproduction in excess of the effective overproduction limit for the proration unit. Units in violation are to be shut-in by the pipeline until cumulative overproduction is less than the applicable limit.

CURTAIL AFTER COLUMN

Volume in this column instructs the pipeline to shut-in the subject proration unit for the length of time which would be required to produce this volume.

NOTE: Some wells listed in the schedule may have been shut-in separate from this schedule by other Division action of which the operator and transporter have been notified in writing. In no event shall such a well be produced until released by the Division in writing to the operator and the transporter.

POOL BALANCING SCHEDULE FOR APRIL 1986 SOUTHEAST GAS PRORATION SCHEDULE

ATOKA PENN. (PRORATED GAS) PURCHASERS' ADJUSTMENT 98368 297870
 TOTAL ALLOCATION 199502 297870
 LESS MARGINAL RESERVED ALLOCATION 269765
 TOTAL NON-MARGINAL ALLOCATION 28105
 PARTICIPATING ACREAGE FACTORS 28105
 TOTAL MARGINAL - NON-MARGINAL POOL ALLOCATION 1.00 297870

BLINEBY (PRO GAS) (CONSPICUOUSLY DATED) PURCHASERS' ADJUSTMENT 644464
 TOTAL ALLOCATION 584464
 LESS MARGINAL RESERVED ALLOCATION 64370
 TOTAL NON-MARGINAL ALLOCATION 520094
 PARTICIPATING ACREAGE FACTORS 520094
 TOTAL MARGINAL - NON-MARGINAL POOL ALLOCATION 644463 644463

BUFFALO VALLEY PENN. (PRORATED GAS) PURCHASERS' ADJUSTMENT 298538
 TOTAL ALLOCATION 32996
 LESS MARGINAL RESERVED ALLOCATION 331934
 TOTAL NON-MARGINAL ALLOCATION 331934
 PARTICIPATING ACREAGE FACTORS 201984
 TOTAL MARGINAL - NON-MARGINAL POOL ALLOCATION 40390.00 201980

BURTON FLAT MORROW (PRORATED GAS) PURCHASERS' ADJUSTMENT 263340
 TOTAL ALLOCATION 28921-
 LESS MARGINAL RESERVED ALLOCATION 234419
 TOTAL NON-MARGINAL ALLOCATION 234419
 PARTICIPATING ACREAGE FACTORS 157783
 TOTAL MARGINAL - NON-MARGINAL POOL ALLOCATION 5990.00 157783

BURTON FLAT STRAN (PRORATED GAS) PURCHASERS' ADJUSTMENT 10078
 TOTAL ALLOCATION 13159
 LESS MARGINAL RESERVED ALLOCATION 23237
 TOTAL NON-MARGINAL ALLOCATION 23537
 PARTICIPATING ACREAGE FACTORS 7165
 TOTAL MARGINAL - NON-MARGINAL POOL ALLOCATION 0.00 16072

BURTON FLATS MOLE CAMP NO. 2 (PRO GAS) PURCHASERS' ADJUSTMENT 0
 TOTAL ALLOCATION 90288
 LESS MARGINAL RESERVED ALLOCATION 90288
 TOTAL NON-MARGINAL ALLOCATION 0
 PARTICIPATING ACREAGE FACTORS 90288
 TOTAL MARGINAL - NON-MARGINAL POOL ALLOCATION 0.00 90288

CARLEBAD MORROW (PRORATED GAS) PURCHASERS' ADJUSTMENT 632213
 TOTAL ALLOCATION 303158-
 LESS MARGINAL RESERVED ALLOCATION 329095
 TOTAL NON-MARGINAL ALLOCATION 329095
 PARTICIPATING ACREAGE FACTORS 148083
 TOTAL MARGINAL - NON-MARGINAL POOL ALLOCATION 15098.00 181032

CATCLAW DRAW MORROW (PRORATED GAS) PURCHASERS' ADJUSTMENT 89064
 TOTAL ALLOCATION 57099-
 LESS MARGINAL RESERVED ALLOCATION 30965
 TOTAL NON-MARGINAL ALLOCATION 30965
 PARTICIPATING ACREAGE FACTORS 29725
 TOTAL MARGINAL - NON-MARGINAL POOL ALLOCATION 14937.19 29725

CRIDBY DEVONIAN (PRORATED GAS) PURCHASERS' ADJUSTMENT 6098
 TOTAL ALLOCATION 6098
 LESS MARGINAL RESERVED ALLOCATION 4766
 TOTAL NON-MARGINAL ALLOCATION 1312
 PARTICIPATING ACREAGE FACTORS 1312
 TOTAL MARGINAL - NON-MARGINAL POOL ALLOCATION 1.00 1312

DOUBLE W. WEST (ABANDONED) PURCHASERS' ADJUSTMENT 15000
 TOTAL ALLOCATION 15000
 LESS MARGINAL RESERVED ALLOCATION 15000
 TOTAL NON-MARGINAL ALLOCATION 0
 PARTICIPATING ACREAGE FACTORS 15000
 TOTAL MARGINAL - NON-MARGINAL POOL ALLOCATION 1.00 15000

POOL BALANCING SCHEDULE FOR APRIL 1986 SOUTHEAST GAS PRORATION SCHEDULE

ELKIN FUSSELMAN, SOUTH (GAS) PURCHASERS' ADJUSTMENT 43650
 TOTAL ALLOCATION 43650
 LESS MARGINAL RESERVED ALLOCATION 43650
 TOTAL NON-MARGINAL ALLOCATION 0
 PARTICIPATING ACREAGE FACTORS 43650
 TOTAL MARGINAL - NON-MARGINAL POOL ALLOCATION 0.97 43650

EDMONT VALES 7 RYERS ON (PRO GAS) PURCHASERS' ADJUSTMENT 1413515
 TOTAL ALLOCATION 568121
 LESS MARGINAL RESERVED ALLOCATION 569100
 TOTAL NON-MARGINAL ALLOCATION 102.10
 PARTICIPATING ACREAGE FACTORS 102.10
 TOTAL MARGINAL - NON-MARGINAL POOL ALLOCATION 644463 1987540

GRAMA RIDGE MOLE CAMP (GAS) PURCHASERS' ADJUSTMENT 75000
 TOTAL ALLOCATION 75000
 LESS MARGINAL RESERVED ALLOCATION 75000
 TOTAL NON-MARGINAL ALLOCATION 0
 PARTICIPATING ACREAGE FACTORS 75000
 TOTAL MARGINAL - NON-MARGINAL POOL ALLOCATION 75000 75000

INDIAN BASIN UPPER PENN. (PRO GAS) PURCHASERS' ADJUSTMENT 65000
 TOTAL ALLOCATION 2491
 LESS MARGINAL RESERVED ALLOCATION 65000
 TOTAL NON-MARGINAL ALLOCATION 65000
 PARTICIPATING ACREAGE FACTORS 15197
 TOTAL MARGINAL - NON-MARGINAL POOL ALLOCATION 0.00 15197

INDIAN BASIN LOWER PENN. (PRO GAS) PURCHASERS' ADJUSTMENT 3450000
 TOTAL ALLOCATION 1280309-
 LESS MARGINAL RESERVED ALLOCATION 1280309
 TOTAL NON-MARGINAL ALLOCATION 0
 PARTICIPATING ACREAGE FACTORS 1280309
 TOTAL MARGINAL - NON-MARGINAL POOL ALLOCATION 0.00 1280309

JALMAT TANSLEY VT 7 RYERS (PRO GAS) PURCHASERS' ADJUSTMENT 441737
 TOTAL ALLOCATION 615662
 LESS MARGINAL RESERVED ALLOCATION 441737
 TOTAL NON-MARGINAL ALLOCATION 173925
 PARTICIPATING ACREAGE FACTORS 173925
 TOTAL MARGINAL - NON-MARGINAL POOL ALLOCATION 7159.00 173925

JUSTIS GLORIA (PRORATED GAS) PURCHASERS' ADJUSTMENT 41482
 TOTAL ALLOCATION 20591
 LESS MARGINAL RESERVED ALLOCATION 41482
 TOTAL NON-MARGINAL ALLOCATION 41482
 PARTICIPATING ACREAGE FACTORS 41482
 TOTAL MARGINAL - NON-MARGINAL POOL ALLOCATION 14.00 41482

MONUMENT MCKEE ELLEN (PRORATED GAS) PURCHASERS' ADJUSTMENT 48791
 TOTAL ALLOCATION 17035-
 LESS MARGINAL RESERVED ALLOCATION 48791
 TOTAL NON-MARGINAL ALLOCATION 17035
 PARTICIPATING ACREAGE FACTORS 17035
 TOTAL MARGINAL - NON-MARGINAL POOL ALLOCATION 10925.00 17035

PARKWAY ATOKA WEST (PRORATED GAS) PURCHASERS' ADJUSTMENT 180000
 TOTAL ALLOCATION 180000
 LESS MARGINAL RESERVED ALLOCATION 180000
 TOTAL NON-MARGINAL ALLOCATION 0
 PARTICIPATING ACREAGE FACTORS 180000
 TOTAL MARGINAL - NON-MARGINAL POOL ALLOCATION 3.00 180000

PARKWAY STRAWY WEST (GAS) PURCHASERS' ADJUSTMENT 0
 TOTAL ALLOCATION 0
 LESS MARGINAL RESERVED ALLOCATION 0
 TOTAL NON-MARGINAL ALLOCATION 0
 PARTICIPATING ACREAGE FACTORS 0
 TOTAL MARGINAL - NON-MARGINAL POOL ALLOCATION 0.00 0

TUBB (PRORATED GAS) PURCHASERS' ADJUSTMENT 295595
 TOTAL ALLOCATION 48505
 LESS MARGINAL RESERVED ALLOCATION 295595
 TOTAL NON-MARGINAL ALLOCATION 48505
 PARTICIPATING ACREAGE FACTORS 48505
 TOTAL MARGINAL - NON-MARGINAL POOL ALLOCATION 42.90 48505

100 PERCENT AVERAGE ALLOCATION

ATOKA PENN. (PRORATED GAS)	6030	2.00	.00	2.00	.00	.00
GAS CO. OF NEW MEXICO	4680	.00	.00	.00	.00	.00
PHILLIPS PETROLEUM COMPANY	4680	.00	.00	.00	.00	.00
PHILLIPS PET AND GAS CO. OF N. M.	214313	1.00	.00	1.00	.00	.00
PHILLIPS PET AND GAS CO. OF N. M.	214313	1.00	.00	1.00	.00	.00
TRANSMITTEN PIPELINE COMPANY	93688	18.89	1.00	18.89	1.00	1.00
TRANSMITTEN PIPELINE COMPANY	93688	18.89	1.00	18.89	1.00	1.00
POOL TOTAL	288861	269765	21.89	28105	269765	21.89
BLINERBY (PRO GAS) (CONSOLIDATED)	288861	269765	21.89	28105	269765	21.89
EL PASO NATURAL GAS COMPANY	151898	14835	9.50	32816	52527	32816
EL PASO NATURAL GAS COMPANY	151898	14835	9.50	32816	52527	32816
EL PASO NATURAL GAS AND TEXACO	5183	12945	4.50	13884	12945	13884
EL PASO NATURAL GAS AND TEXACO	5183	12945	4.50	13884	12945	13884
EL PASO NATURAL GAS AND WARREN PIPELINE SYS	4157	2.25	.00	4157	2.25	.00
EL PASO, WARREN AND SHELL PIPELINES	4291	2.25	.00	4157	2.25	.00
GAS CO. OF NEW MEXICO	20350	5049	1.00	5049	1.00	1.00
GETTY OIL COMPANY	.00	.00	.00	.00	.00	.00
NORTHERN NATURAL GAS COMPANY	351076	361444	29.49	2524	361444	29.49
NORTHERN NATURAL GAS AND GETTY	67058	67058	5.00	67058	67058	67058
NORTHERN NATURAL GAS & WARREN PETROLEUM CO	68242	68242	7.25	68242	68242	68242
NORTHERN NATURAL GAS AND SHELL PIPELINE	2910	2910	.00	2910	2910	.00
SHELL PIPELINE CORPORATION	11490	.00	.00	.00	.00	.00
TEXACO INCORPORATED	13000	.50	.00	.50	.00	.00
TEXACO PRODUCING, INC.	10175	2.25	1.50	10096	2.25	1.50
WARREN PETROLEUM CORPORATION	10175	2.25	1.50	10096	2.25	1.50
POOL TOTAL	654464	155354	61.74	64369	155354	61.74
BUFFALO VALLEY PENN. (PRORATED GAS)	39281	31258	2.00	40390	31258	2.00
EL PASO NATURAL GAS COMPANY	39281	31258	2.00	40390	31258	2.00
PHILLIPS PETROLEUM COMPANY	182790	107343	17.11	80780	107343	17.11
PHILLIPS PETROLEUM COMPANY	182790	107343	17.11	80780	107343	17.11
TRANSMITTEN PIPELINE COMPANY	176467	8688	6.50	80780	8688	6.50
TRANSMITTEN PIPELINE COMPANY	176467	8688	6.50	80780	8688	6.50
POOL TOTAL	298538	835879	25.61	201950	835879	25.61
BURTON FLAT MORROW (PRORATED GAS)	18461	681	2.00	5950	681	2.00
CABOT PIPELINE	18461	681	2.00	5950	681	2.00
CITIES SERVICE OIL COMPANY	27681	21265	6.00	21265	21265	6.00
CITIES SERVICE OIL COMPANY	27681	21265	6.00	21265	21265	6.00
EL PASO AND GAS CO. OF NEW MEXICO	20496	20496	1.00	20496	20496	1.00
EL PASO AND GAS CO. OF NEW MEXICO	20496	20496	1.00	20496	20496	1.00
EL PASO NAT GAS AND NAT GAS PIPELINE OF AM	122428	127492	6.88	40936	127492	6.88
EL PASO NATURAL GAS COMPANY	122428	127492	6.88	40936	127492	6.88
EL PASO NATURAL GAS AND LLANO	164	164	2.00	164	164	2.00
EL PASO NATURAL GAS AND LLANO	164	164	2.00	164	164	2.00
GAS CO. OF NEW MEXICO	11166	3737	5.82	5950	3737	5.82
GAS CO. OF NEW MEXICO	11166	3737	5.82	5950	3737	5.82
LLANO INCORPORATED	4238	4238	2.93	4238	4238	2.93
LLANO INCORPORATED	4238	4238	2.93	4238	4238	2.93
MONSANTO COMPANY	12000	.00	.00	.00	.00	.00

APRIL 1986 SOUTHEAST GAS PRORATION FACTOR SUMMARY

APRIL NOMINATED	FEBRUARY TOTAL PROD	FEBRUARY MARGINAL	PROD. NON MARGINAL	MARCH MARGINAL	INTERIM NON MARGINAL	MARGINAL	APRIL NON MARGINAL	NEW ACREAGE MARG	NEW FACTOR NON-MARG	ALLOCATION NO. WELLS M NM	ACREAGE NM
NATURAL GAS PIPELINE COMPANY OF AMERICA 35040	30027	7729	22298	6726	11010	7729	11900	3.00	2.00	3	2
PHILLIPS PETROLEUM COMPANY 5100	19217	19217		22743		19217		2.00	.00	2	
TRANSWESTERN PIPELINE COMPANY 35316	31298	22536	8762	24717	11010	22536	11900	6.00	2.00	6	2
HARVEY E. YATES CO. 4075								.00	.00		
POOL TOTAL 263340	284505	157783	126722	202258	70904	157783	76636	53.75	12.88	54	13
BURTON FLAT STRAWN (PRORATED GAS)											
EL PASO NATURAL GAS COMPANY 235								.00	.00		
GAS CO. OF NEW MEXICO 969								1.00	.00	1	
TRANSWESTERN PIPELINE COMPANY 9843	7165	7165		1684		7165		2.00	.00	2	
HARVEY E. YATES CO.								1.00	.00	1	
POOL TOTAL 10078	8134	7165		1684		7165		4.00	.00	4	
BURTON FLATS WOLFCAMP, NO. (PRO GAS)											
CITIES SERVICE OIL COMPANY 58478	58478	58478		49015		58478		10.00	.00	10	
EL PASO NATURAL GAS COMPANY 4							4	1.00	.00	1	
PHILLIPS PETROLEUM COMPANY 31806	31806	31806		32560		31806		2.00	.00	2	
POOL TOTAL 90288	90288			81575		90288		13.00	.00	13	
CARLSBAD MURROW, SO. (PRORATED GAS)											
EL PASO NATURAL GAS COMPANY 68602	57922	36174	21748	59479	38034	36174	45258	21.00	3.00	21	3
EL PASO NATURAL GAS AND LLAND 37196	37196			41431		37196		6.97	.00	7	
HANON OIL CO. 18804			18804		38034		45258	.00	3.00		3
LLAND INCORPORATED 500000	115793	22584	93209	21227	63390	22584	75430	14.00	5.00	14	5
NATURAL GAS PIPELINE COMPANY OF AMERICA 4200	4466	4466		4351		4466		3.00	.00	3	
TRANSWESTERN PIPELINE COMPANY 59411	77202	47603	29599	60321	12678	47603	15086	18.59	1.00	19	1
POOL TOTAL 632213	311383	148023	163360	186809	152136	148023	181032	63.56	12.00	64	12
CATCLAW DRAW MORROW (PRORATED GAS)											
EL PASO NATURAL GAS COMPANY 1764								.00	.00		
GAS CO. OF NEW MEXICO 1240	1240			16161	22692	1240	14788	4.87	.99	5	1
LLAND INCORPORATED 86300				8780	22922		14937	3.00	1.00	3	1
LLAND INC AND GAS CO OF N. M.				8259				3.00	.00	3	
SOUTHERN UNION GATHERING COMPANY											
POOL TOTAL 88064	1240	1240		33200	45614	1240	29725	10.87	1.99	11	2
CROSBY DEVONIAN (PRORATED GAS)											
EL PASO NATURAL GAS COMPANY 6098	17944	4786	13158	4518	2035	4786	1312	1.00	1.00	1	1
POOL TOTAL 6098	17944	4786	13158	4518	2035	4786	1312	1.00	1.00	1	1
DOUBLE X WC, WEST (ABANDONED)											
TRANSWESTERN PIPELINE COMPANY					15500		15000	.00	1.00		1
POOL TOTAL 15000					15500		15000	.00	1.00		1
ELKIN FUSSELMAN, SOUTH (GAS)											
MAPCO INC.					45105		43650	.00	.97		1
POOL TOTAL 43650					45105		43650	.00	.97		1

APRIL 1986 SOUTHEAST GAS PRORATION FACTOR SUMMARY											
APRIL	FEBRUARY	FEBRUARY	PROD.	MARCH	INTERIM	APRIL		NEW		ALLOCATION	
NOMINATED	TOTAL	MARGINAL	NON	MARGINAL	NON	MARGINAL	NON	ACREAGE	FACTOR	NO.	ACREAGE
	PROD		MARGINAL		MARGINAL		MARGINAL	MARG	NON-MARG	M	NM
PHILLIPS PETROLEUM COMPANY											
27	66	66		29		66		1.00	.00	1	
TEXACO INCORPORATED											
16850	1370	1370		1065		1370		2.88	.00	3	
TEXACO PRODUCING, INC.											
1320	1320	1320		1636		1320		1.00	.00	1	
POOL TOTAL											
441737	948784	486111	445181	542416	534668	486111	571298	279.82	79.80	233	76
JUSTIS GLORIETA (PRORATED GAS)											
EL PASO NATURAL GAS COMPANY											
41462	26977	9455	17522	10944	35140	9455	52598	11.00	14.00	6	8
POOL TOTAL											
41462	26977	9455	17522	10944	35140	9455	52598	11.00	14.00	6	8
MONUMENT MCKEE ELLEN (PRORATED GAS)											
EL PASO NATURAL GAS COMPANY											
7908	386	386		387		386		1.00	.00	1	
GULF & EL PASO											
13306			13306		9319		10925	.00	1.00		1
GULF REFINING COMPANY											
								.00	.00		
NORTHERN NATURAL GAS COMPANY											
10516	9520	9520		17718		9520		2.00	.00	2	
TRANSWESTERN PIPELINE COMPANY											
12367	14848		14848		9319		10925	.00	1.00		1
WARREN PETROLEUM CORPORATION											
18000								.00	.00		
POOL TOTAL											
48791	38060	9906	28154	18105	18638	9906	21850	3.00	2.00	3	2
PARKWAY ATOKA, WEST (PRORATED GAS)											
EL PASO NATURAL GAS COMPANY											
	2417		2417		186000		180000	.00	3.00		3
POOL TOTAL											
180000	2417		2417		186000		180000	.00	3.00		3
TUBB (PRORATED GAS)											
EL PASO NATURAL GAS COMPANY											
67115	79986	24271	55715	26509	73248	24271	79730	17.49	14.00	19	15
GETTY OIL COMPANY											
								.00	.00		
NORTHERN NATURAL GAS COMPANY											
19200	339164	78041	256950	81732	125830	78041	136965	37.40	24.05	41	27
NORTHERN NATURAL GAS & WARREN PETROLEUM CO											
	859	859		938		859		1.00	.00	1	
TEXACO INCORPORATED											
35000								.00	.00		
TEXACO PRODUCING, INC.											
38363			38363		19620		21356	.50	3.75	2	4
WARREN PETROLEUM CORPORATION											
1450	2248		2248		2616		2848	.00	.50		1
POOL TOTAL											
295565	460620	103171	353276	109179	221314	103171	240899	56.39	42.30	63	47

DESCRIPTION STAT AF	FEB PRD	FEB D/O	APR ALLOC	ACRE DELIV
ATOKA PENN. (PRORATED GAS)				
JERRY NELSON COM	M 1.00	161	161	320
YATES PETROLEUM CORPORATION DAYTON TOWN SITE GAS COM	M 1.00	1015	1015	320
PIPELINE TOTAL	19.89	74548	83557	6362
POOL TOTAL	22.89	288861	297870	7162
BLINEBRY (PRO GAS) (CONSOLIDATED)				
EL PASO NATURAL GAS COMPANY				
ARCO OIL & GAS COMPANY			5049	160
OLLIE J. BOYD		10915		
29232537E(MMU)		8440		
P. U. SUMMARY N	1.00	19355	5049	160
RUBANK CONE				
ELLINGTON A 15 COM AC 1		2768	2524	80
3K1421537E(MMU)		8558		
P. U. SUMMARY N	.50	11326	2524	80
CONOCO INC				
ELLINGTON A 15 COM AC 1		1256	1256	160
6P1522537E(MMU)		25		
HAWK H I AC 1				40
IF 921337E				120
LOCKHART A 27		11847	11847	120
2AZ721537E				160
WARGEN 9211 BLINEBRY 75		7533	7533	160
3PK2820338E M	1.00			
EXXON CORPORATION				
J L GRAYFIELD		938	938	160
111152537E M	1.00			
F. F. MARSHALL		465		
1H321537E(MMU)		148	613	160
4B3421537E(MMU)		613		
P. U. SUMMARY M	1.00	12710	613	160
7P2721537E(MMU)		1416		
8I2721537E(MMU)		1416		
P. U. SUMMARY M	.75	14126	14126	120
NEW MEXICO V. STATE				
11K1021537E M	.25	250	250	40
MORANCO				
E M LOTT				40
1E3521537E M	.25			
PHILLIPS PETROLEUM COMPANY				
SIMS		6134	6134	120
2E2422537E M	.75			
NO WELL RECORD FOUND S2237E24008L				
SAMEDAN OIL CORPORATION				
PARKS A		2816		
501422537E N	1.00		5049	160
SHELL OIL COMPANY				
GRIZZELLE		5222		
2222537E N	.25			
SARNEY 222537E N	.25		1262	40
5P3521537E N	.50	8547	2524	80
TURNER 3J2221537E N	.75	16646	3786	120
SUMMIT ENERGY INC				
DRINKARD VESYATE		2142		
4H2522537E M	1.00		2142	160
SUN EXPLORATION & PRODUCTION CO.				
SIMS			5049	160
1F2522537E N	1.00			
SUN OIL COMPANY				
BOYD		7250		
2R2322537E M	1.00		7250	160
DANGLADE		438		
2P1322537E M	.50		438	80
DRINKARD				

DESCRIPTION STAT AF	FEB PRD	FEB D/O	APR ALLOC	ACRE DELIV
ATOKA PENN. (PRORATED GAS)				
GAS CO. OF NEW MEXICO				
MEMPHIS OIL CO				
PERDUE				
SP 118526E M	1.00	320	320	320
SPENCER COM				
1K 118526E M	1.00	640	640	320
PIPELINE TOTAL	2.00			
PHILLIPS PETROLEUM COMPANY				
MURKIN PRODUCTIONS TEXAS AND NEW MEXICO				
BRADLEY		3113		
2A118526E(MMU)		211200		
PIPELINE TOTAL	.CO			
PHILLIPS PET AND GAS CO. OF N. M.				
MCAL PRODUCTIONS TEXAS AND NEW MEXICO				
BRADLEY GAS COM	M 1.00	214313	214313	160
P. U. SUMMARY				
PIPELINE TOTAL	1.00	214313	214313	160
TRANSCONTINENTAL PIPELINE COMPANY				
CHEVRON U.S.A. INC				
C R MARTIN				
1J118526E M	1.00	4537	4537	320
PAUL TERRY ET AL GAS COM				
2H118526E M	.79	519	519	252
PIPELINE TOTAL				
DAVID PARKER				
HUNTER TOLSON COM		11592	11592	320
1L118526E M	1.00			
ROBERTS		6665	6665	297
11118526E M	.93			
FELMONT OIL CORPORATION				
ADAMS TRUST INC COM		1736		
1A118526E M	1.00			
LEAVITT COM		1921	1921	320
1A118526E M	1.00			
SPENCER 1A118526E M	1.00	8	8	320
TERRY COM				
101418526E M	.64	2707	2707	204
MADDOX ENERGY CORP				
MEMPHIS TRUST INC COM		5483		
1A118526E M	1.00			
LEAVITT COM				
1A118526E M	1.00			
GUY A. NICKSON A				
1A118526E M	.75			
RALPH WEAVER				
1J18518526E M	1.00			
ETHEL V. BOEL				
1P2018526E M	1.00	1616	1616	320
MCJ PRODUCTIONS COMPANY				
ROBERTS		686	686	320
1P18526E M	1.00			
READ AND STEWARTS INC				
LEWIS BRADLEY GAS COM		170	170	320
1E2018526E M	1.00			
MILLIAM G. BOSS				
A C ROBERTS COM		59	59	320
1P 318526E M	1.00			
DIANE WOLF TATEM				

DESCRIPTION STAT	AF	FEB	APR	ACCT-
US		PROD	ALLO	DELIV
1C2522537E N	.50	12300	32983	80
LNCH GHRTSTMAS COM	N	1.00	20096	160
4L 122537E N	1.00	10758	5049	160
NO WELL RECORD FOUND		\$2237E03CCOBL		
PIPELINE TOTAL	16.00	148835	259317	85343

DESCRIPTION STAT	AF	FEB	APR	ACCT-
US		PROD	ALLO	DELIV
1A2621537E M	.50	10439	10439	80
NO WELL RECORD FOUND		\$2137E36MOBL		
NO WELL RECORD FOUND		\$2237E25J00BL		
CHEVRON U.S.A. INC				
1R 122537E M	.75	8276	8276	120
101222537E M	.50	8864	8864	80
J N CARSON MGT C				
68282537E M	.75	26126	26126	120
MARK				
10H222537E (MMU)	M	.75	3819	120
P. U. SUMMARRY	M	1.00	3819	120
24E2821537E (MMU)	M	1.00	5955	160
1SE2821537E (MMU)	M	1.00	10025	160
P. U. SUMMARRY	M	1.00	15880	160
ALICE PAUDUCK	M	1.00	15880	160
101222537E M	.50	2308	2308	80
SCARROUCH ESTATE	M	1.00	412	160
2H3122538E M	1.00	412	412	160

EL PASO NATURAL GAS AND TEXACO

CITIES SERVICE COMPANY

CONOCO INC	M	.50	386	80
103521537E M	.25	3541	3541	40
M ELAMT 122537E	M	1.00	3541	40
1L2121537E M	1.00	3541	3541	40
EXXON CORPORATION				
J L GREENWOOD	M	1.00	5300	160
13L 922537E M	1.00	5300	5300	160
NEW MEXICO	M	.75	221	120
12A 222537E M	1.00	1318	1318	160
14C 222537E M	1.00	28707	28707	160
11L 222537E M	1.00	4753-	18299	160
23P 222537E M	1.00	18299	5049	160

BRUNSON B	M	1.00	11838	160
2K 322537E (MMU)	M	1.00	2490	160
6M 322537E (MMU)	M	1.00	14328	160
P. U. SUMMARRY	M	1.00	14328	160
OWEN	M	.50	233	80
203521537E M	.50	233	233	80
STATE P. U. M	.75	226	226	120
1F 3222538E M	.75	226	226	120

SHELL OIL COMPANY

JOHN H. HENDRIX CORP

TURNER	M	.75	15531	120
13N2221537E M	1.00	23902	3786	120
PIPELINE TOTAL	7.25	57183	26829	1160

BRUNSON U	M	1.00	15046	160
7D 32537E (MMU)	M	1.00	25564	80
P. U. SUMMARRY	M	1.00	25564	80
COSSATO TAYLOR	M	1.00	9677	80
1H1222537E M	.50	9677	9677	80

EL PASO NATURAL GAS AND WARREN PIPELINE SYS

MARATHON OIL COMPANY

MARATHON OIL COMPANY	M	.75	1757	120
J L 242537E M	.50	2183	1757	80
3N242537E M	.50	2183	2183	80
SUN OIL COMPANY				
DANGLADE	M	1.00	217	160
1L1322537E M	1.00	217	4157	360
PIPELINE TOTAL	2.25	4157	4157	360

MARK OWEN	M	1.00	44056	160
2M3521537E M	1.00	44056	149	40
L G MARLICK C	M	.25	149	40
L 201521537E M	1.00	46348	46348	160
LOU WORTHAN	M	1.00	46348	160
12H1122537E M	1.00	46348	46348	160

E. PASO, WARREN AND SHELL PIPELINES

MOBIL PRODUCING TEXAS AND NEW MEXICO

CONOCO INC	M	1.00	4291	160
MARKET	M	1.00	155961	160
8J282538E N	1.00	4291	5049	160
PIPELINE TOTAL	1.00	4291	5049	160

BRUNSON ARGON	M	.50	1639	80
1B 72537E M	.50	1639	3117	80
101222537E M	.50	3117	2304	80
CARSON 74720N COM	M	.50	1020	78
3H3321537E M	.49	1020	1020	78
E D CARSON	M	1.00	1067	160
14C3331537E M	.75	11813	1067	160
19L2821537E M	.75	11813	11813	120
NO WELL RECORD FOUND		\$2137E33800BL		
S E LONG				
501122537E (MMU)	M	1.00	12324	80
8J1122537E (MMU)	M	1.00	4291	80
P. U. SUMMARRY	M	1.00	4291	80
NO WELL RECORD FOUND		\$2137E34400BL		
NO WELL RECORD FOUND		\$2137E24400BL		
D A WILSON	M	.25	843	40
142321537E M	.25	843	843	40

GAS CO. OF NEW MEXICO

PETRO LEWIS CORP

MORRIS R. ANTHELL	M	1.00	3140-	40
HILL	M	1.00	3140-	40
1J 421537E NC	1.00	3140-	3140-	40
PIPELINE TOTAL	.00	3140-	3140-	40

J G RANDE	M	.50	3519	80
1G2021537E M	.50	3519	3519	80
L G MARLICK A BLINBRY GAS COM	M	.25	972	40
111921537E M	.25	972	972	40
NO WELL RECORD FOUND		\$2137E19400BL		

NORTHERN NATURAL GAS COMPANY

SOHIO PETROLEUM COMPANY

AMERADA HESS CORPORATION	M	1.00	23081	80
A B BAKER	M	.50	2524	80
4P1022537E N	.50	9632	738	160
H CORRIGAN BLINBRY GAS COM	M	1.00	738	160
9G 422537E M	1.00	738	227	160
STATE DA	M	1.00	227	160
411621537E M	1.00	227	227	160
E M MAUDEN	M	1.00	6545	160
2K1222537E (MMU)	M	1.00	6545	160
7N1222537E (MMU)	M	1.00	6545	160
P. U. SUMMARRY	M	1.00	6545	160

HINUN	M	1.00	5907	160
3Y1222537E M	1.00	5907	16916	160
ELLIOTT HINUN	M	1.00	16916	160
1E1222537E M	1.00	16916	16916	160

ARCO OIL & GAS COMPANY

TEXACO INCORPORATED

ARCO OIL & GAS COMPANY	M	.50	17411	240
50 421537E M	.50	17411	17411	240
PIPELINE TOTAL	.50	17411	17411	240

BAKER	M	1.50	17348	240
121022537E M	1.50	17348	17348	240
NO WELL RECORD FOUND		\$2237E28400BL		
A M 101922538E M	.75	17411	17411	240
PIPELINE TOTAL	.75	17411	17411	240

UNION TEXAS PETROLEUM CORPORATION

UNION TEXAS PETROLEUM CORPORATION

UNION TEXAS PETROLEUM CORPORATION	M	1.00	17411	240
PIPELINE TOTAL	1.00	17411	17411	240

UNION TEXAS PETROLEUM CORPORATION	M	1.00	17411	240
PIPELINE TOTAL	1.00	17411	17411	240

BLINEBRY (PRO GAS) (CONSOLIDATED)	DESCRIPTION STAT AF	FEB PROD	APR ALLDC	ACRE-DELIV	NGG FEB O/D	APR ALLDC	ACRE-DELIV
PIPELINE TOTAL	29.99	371076	363968	4638	23081		
NORTHERN NATURAL GAS AND GETTY							
AMOCO PRODUCTION CO							
LUK 421537E	M	1.00	19995				
LUK 322921537E	M	.50					
MARATHON OIL COMPANY							
WAL 122537E	M	1.00	16667				
LOU 921122537E	M	1.00	26523				
20th OIL COMPANY							
ELL 922537E	M	1.00					
TEXACO INCORPORATED							
A H 103122538E	M	.50	3873				
PIPELINE TOTAL	5.00	67058	67058	800			
NORTHERN NATURAL GAS & WARREN PETROLEUM CO							
AMOCO PRODUCTION CO							
STAT 523621537E	M	.75	11046				
CHEVRON U.S.A. INC							
U 12022537E	M	1.00	2809				
J 4222537E	M	1.00					
W 2622537E	M	1.00					
P 2622537E	M	1.00					
ELL 52237E168008L	M	1.00	26708				
LOU 52237E	M	.50	116				
PIPELINE TOTAL	7.25	6885	6885	120			
NORTHERN NATURAL, WARREN AND SHELL PIPELINE							
CHEVRON U.S.A. INC							
W 701422537E	M	1.00	7010				
EVE 122537E	M	.25					
MAR 122537E	M	.25					
P 322537E	M	.75	7950				
MARK 322537E	M	1.00	5718				
PIPELINE TOTAL	7.25	68242	68242	1160			

BLINEBRY (PRO GAS) (CONSOLIDATED)	DESCRIPTION STAT AF	FEB PROD	APR ALLDC	ACRE-DELIV	NGG FEB O/D	APR ALLDC	ACRE-DELIV
PIPELINE TOTAL	3.75	31602	31602	120			
WARREN PETROLEUM CORPORATION							
CHEVRON U.S.A. INC							
STAT 1922538E	M	.25	2809				
PIPELINE TOTAL	.25	26708	26708	160			
POOL TOTAL	74.49	755354	116	80			
BUFFALO VALLEY PENN. (PRORATED GAS)							
EL PASO NATURAL GAS COMPANY							
READ AND STEVENS, INC.							
HARRIS FEDERAL	M	1.00	739				
W 2622537E	M	1.00	8521				
PIPELINE TOTAL	3.00	31258	7950	120			
PHILLIPS PETROLEUM COMPANY							
AMOCO PRODUCTION CO							
STAT 133615527E	N	1.00	617920				
BHP PETROLEUM, INC.							
BUFFALO VALLEY COM.							
CLEGG 115527E	M	1.00	343				
PIPELINE TOTAL	1.00	2303	2910	120			
DEPCO INCORPORATED							
STAT 815528E	M	1.00	392				
R AND S FEDERAL COM							
R AND S STATE	M	1.00					
HOLLY ENERGY, INC							
LU 20 715528E	M	1.02	1374				
MEMPHIS OIL CO							
MEMPHIS STATE 25 COM							
PIPELINE TOTAL	1.00	14829	1262	40			

BLINEBRY (PRO GAS) (CONSOLIDATED)	DESCRIPTION STAT AF	FEB PROD	APR ALLDC	ACRE-DELIV	NGG FEB O/D	APR ALLDC	ACRE-DELIV
PIPELINE TOTAL	29.99	371076	363968	4638	23081		
NORTHERN NATURAL GAS AND GETTY							
AMOCO PRODUCTION CO							
LUK 421537E	M	1.00	19995				
LUK 322921537E	M	.50					
MARATHON OIL COMPANY							
WAL 122537E	M	1.00	16667				
LOU 921122537E	M	1.00	26523				
20th OIL COMPANY							
ELL 922537E	M	1.00					
TEXACO INCORPORATED							
A H 103122538E	M	.50	3873				
PIPELINE TOTAL	5.00	67058	67058	800			
NORTHERN NATURAL GAS & WARREN PETROLEUM CO							
AMOCO PRODUCTION CO							
STAT 523621537E	M	.75	11046				
CHEVRON U.S.A. INC							
U 12022537E	M	1.00	2809				
J 4222537E	M	1.00					
W 2622537E	M	1.00					
P 2622537E	M	1.00					
ELL 52237E168008L	M	1.00	26708				
LOU 52237E	M	.50	116				
PIPELINE TOTAL	7.25	6885	6885	120			
NORTHERN NATURAL, WARREN AND SHELL PIPELINE							
CHEVRON U.S.A. INC							
W 701422537E	M	1.00	7010				
EVE 122537E	M	.25					
MAR 122537E	M	.25					
P 322537E	M	.75	7950				
MARK 322537E	M	1.00	5718				
PIPELINE TOTAL	7.25	68242	68242	1160			

APRIL 1986 SOUTHEAST GAS PRODUCTION SCHEDULE
 BUFFALO VALLEY PENN. (PRORATED GAS) P P
 DESCRIPTION STAT AF FEB PROD O/U APR ALLOC DELIV

BROTHERS FEDERAL	M	1.00	393	393	320	320	320	320	320
BROTHERS FEDERAL	M	1.00	11670	11670	320	320	320	320	320
HONOLULU STATE	M	1.00	14468	14468	320	320	320	320	320
STATE	M	1.00	1895	1895	320	320	320	320	320
READ AND STEVENS, INC.	M	1.00	3499	3499	320	320	320	320	320
READ AND STEVENS, INC.	M	1.00	7009	7009	320	320	320	320	320
HURD	M	1.00	4570	4570	320	320	320	320	320
LULA	M	1.00	4532	4532	327	327	327	327	327
MIDWEST	M	1.05	4098	4098	336	336	336	336	336
PIA	M	1.02	10367	10367	326	326	326	326	326
TROBROUGA	M	1.00	8854	8854	320	320	320	320	320
TROBROUGA	M	1.00	23562	23562	320	320	320	320	320
PIPELINE TOTAL			834521-	188123	6116	6116	6116	6116	6116

TRANSWESTERN PIPELINE COMPANY

AMOCO PRODUCTION CO	M	1.00	*****	*****	320	320	320	320	320
STATE	M	1.00	*****	*****	320	320	320	320	320
READ AND STEVENS, INC.	M	1.00	14257-	715	320	320	320	320	320
READ AND STEVENS, INC.	M	1.00	8276-	40390	320	320	320	320	320
LANGLAY	M	1.00	27094	40390	320	320	320	320	320
LANGLAY	M	1.00	2917	2917	320	320	320	320	320
ROSE	M	1.00	7520	7520	320	320	320	320	320
ROSE	M	1.00	*****	*****	160	160	160	160	160
YATES PETROLEUM CORPORATION	M	1.00	*****	*****	320	320	320	320	320
LONG	M	1.00	1799	1799	320	320	320	320	320
NINE	M	1.00	93731	93731	320	320	320	320	320
PIPELINE TOTAL			22533-	93731	2720	2720	2720	2720	2720
POOL TOTAL			766121-	331534	9796	9796	9796	9796	9796

BURTON FLAT MORROW (PRORATED GAS)

CABOT PIPELINE	M	1.00	*****	*****	320	320	320	320	320
CITIES SERVICE OIL AND GAS CORP.	M	1.00	*****	*****	320	320	320	320	320
GOVERNMENT	M	1.00	*****	*****	320	320	320	320	320
TXO PRODUCTION CORPORATION	M	1.00	112025	5950	320	320	320	320	320
MC	M	1.00	18661	648	320	320	320	320	320
PIPELINE TOTAL			112025	6631	960	960	960	960	960

CITIES SERVICE OIL COMPANY

CITIES SERVICE OIL AND GAS CORP.	M	1.00	*****	*****	320	320	320	320	320
GOVERNMENT	M	1.00	*****	*****	320	320	320	320	320
GOVERNMENT	M	1.00	4930	4930	320	320	320	320	320
GOVERNMENT	M	1.00	*****	*****	320	320	320	320	320
GOVERNMENT	M	1.00	10079	10079	320	320	320	320	320

APRIL 1986 SOUTHEAST GAS PRODUCTION SCHEDULE
 BURTON FLAT MORROW (PRORATED GAS) CIT
 DESCRIPTION STAT AF FEB PROD O/U APR ALLOC DELIV

GOVERNMENT	M	1.00	6256	6256	320	320	320	320	320
GOVERNMENT	M	1.00	21265	21265	320	320	320	320	320
PIPELINE TOTAL			21265	21265	1920	1920	1920	1920	1920
EL PASO AND GAS CO. OF NEW MEXICO	M	1.00	*****	*****	320	320	320	320	320
EL PASO AND GAS CO. OF NEW MEXICO	M	1.00	20496	20496	320	320	320	320	320
PIPELINE TOTAL			20496	20496	320	320	320	320	320

EL PASO NATURAL GAS COMPANY

MORRIS R. ANTHEIL	M	1.00	2334	2334	320	320	320	320	320
MORRIS R. ANTHEIL	M	1.00	6398	6398	322	322	322	322	322
CHEVRON U.S.A. INC.	M	1.00	590	590	320	320	320	320	320
EDDY	M	1.00	1881	1881	320	320	320	320	320
EDDY	M	1.00	219	219	320	320	320	320	320
POTTS	M	1.00	83	83	320	320	320	320	320
POTTS	M	1.00	1026	1026	320	320	320	320	320
CITIES SERVICE OIL AND GAS CORP.	M	1.00	14874	14874	320	320	320	320	320
CITIES SERVICE OIL AND GAS CORP.	M	1.00	61387	5950	320	320	320	320	320
ELI	M	1.00	11312	5950	320	320	320	320	320
ELI	M	1.00	8010	8010	320	320	320	320	320
ELI	M	1.00	2335	2335	320	320	320	320	320
GOVERNMENT	M	1.00	4496	4496	320	320	320	320	320
GOVERNMENT	M	1.00	2839	2839	320	320	320	320	320
SIMPSON	M	1.00	17	17	320	320	320	320	320
STATE	M	1.00	5735	5735	320	320	320	320	320
STATE	M	1.00	2524	2524	324	324	324	324	324
TRA	M	1.00	312	312	320	320	320	320	320
TRA	M	1.00	4321	4321	320	320	320	320	320
EXXON CORPORATION	M	1.00	*****	*****	320	320	320	320	320
NEW MEXICO STATE	M	1.00	16746	16746	320	320	320	320	320
DAVID FASKEN	M	1.00	12022	12022	320	320	320	320	320
GULF FEDERAL	M	1.00	1780	1780	281	281	281	281	281
MAR	M	1.00	4406	4406	320	320	320	320	320
MAR	M	1.00	7676	7676	320	320	320	320	320
HARVARD PETROLEUM CORP.	M	1.00	*****	*****	320	320	320	320	320
HARVARD PETROLEUM CORP.	M	1.00	1040	1040	320	320	320	320	320
INECO OIL COMPANY	M	1.00	*****	*****	320	320	320	320	320

DESCRIPTION	STAT	AF	FEB PROD	EPG FEB 07U	APR ALLOC	ACRE DELIV
BURTON FLAT MORROW (PRORATED GAS)						
2N1920S28E	N	1.00	4829		5950	324
PIPELINE TOTAL		5.00	30027		19629	1604
PHILLIPS PETROLEUM COMPANY						
EXXON CORPORATION					18557	321
YATES FEDERAL CO	M	1.00	18557			
1C3120S28E	M	1.00	660		660	320
PERMOC OIL CORPORATION					19217	641
FOX 1F1820S28E	M	1.00	19217			
PIPELINE TOTAL		2.00	19217			
TRANSWESTERN PIPELINE COMPANY						
COQUINA OIL CORPORATION					1721	320
YATES STATE	M	1.00	1721			
1K1021S27E	M	1.00	1670		1670	320
J. M. HUYER CORPORATION					16505	370
ALLIANCE FEDERAL	M	1.00	16505			
1L1421S27E	M	1.00	2640		2640	300
LIBERTY OIL & GAS CORP.					5950	320
LEA FEDERAL	M	1.00	5131			
1L2520S28E	M	1.00	3631		5950	320
MONSANTO OIL COMPANY					90278	320
BURTON FLAT DEEP UNIT						
1L1820S28E	M	1.00	2640		2640	300
CERF FEDERAL COM					423752	320
2F1021S27E	N	1.00	5131			
YATES PETROLEUM CORPORATION					514030	2560
AVALLON FEDERAL	M	1.00	3631			
2J1821S27E	M	1.00	31298		34436	2560
STONEMAN FEDERAL COM					234419	21334
1K2220S28E	M	1.00	5131			
STONEMAN FEDERAL STATE	M	1.00	5131			
4H3020S28E	M	1.00	5131			
PIPELINE TOTAL		8.00	31298		564488	21334
POOL TOTAL					234419	21334

DESCRIPTION	STAT	AF	FEB PROD	EPG FEB 07U	APR ALLOC	ACRE DELIV
BURTON FLAT STRAWN (PRORATED GAS)						
GAS CO. OF NEW MEXICO						
ARCO OIL & GAS COMPANY						
KORLAND FEDERAL						
1S 621S27E	NC		969		36553	
MONSANTO OIL COMPANY						
BURTON FLAT DEEP UNIT						
3V 321S27E	M	1.00	969			320
PIPELINE TOTAL		1.00	969			
TRANSWESTERN PIPELINE COMPANY						
COQUINA OIL CORPORATION					1721	320
YATES STATE	M	1.00	1721			
1K1021S27E	M	1.00	5444		5444	320
MONSANTO OIL COMPANY					7165	640
CERF FEDERAL COM	M	1.00	7165			
2F1021S27E	M	1.00	7165			
PIPELINE TOTAL		2.00	7165			
HARVEY E. YATES CO.						
HARVEY E. YATES CO.						
CEDAR HILLS COM						
201521S27E	M	1.00	8134		7165	640
PIPELINE TOTAL		1.00	8134			
POOL TOTAL		4.00	8134			

DESCRIPTION	STAT	AF	FEB PROD	EPG FEB 07U	APR ALLOC	ACRE DELIV
BURTON FLAT MORROW (PRORATED GAS)						
1X 121S26E	M	1.00	4887		4887	320
INTERNATIONAL PETROLEUM CORP.						
304 STATE COM						
1W2221S27E	M	1.00	320		320	320
YATES PETROLEUM CORPORATION						
ARCO OIL FEDERAL						
111321S27E	M	1.00	1087		1087	320
STONEMAN FEDERAL STATE						
1F 3020S28E	M	1.00	9247		98656	9247
PIPELINE TOTAL		28.88	127492			
EL PASO NATURAL GAS AND LLANO						
MAKAY OPERATING CO.						
FEDERAL HILLS COM						
1L 421S27E	M	1.00	164		164	320
STONEMAN FEDERAL	M	1.00	164			
1W 921S27E	M	1.00	164		164	640
PIPELINE TOTAL		2.00	164			
GAS CO. OF NEW MEXICO						
MORRIS PRODUCING TEXAS AND NEW MEXICO						
FEDERAL STATE COM						
1F 621S27E	M	1.00	276			
MONSANTO OIL COMPANY						
AVALLON FEDERAL						
1F 721S27E	M	1.00	314		314	320
BURTON FLAT DEEP UNIT						
4N 721S27E	M	1.00	314		314	320
STONEMAN FEDERAL COM						
1L 721S27E	M	1.00	1524		1524	320
2E 721S27E	M	1.00	749		5950	320
2E 721S27E	M	1.00	2213		2213	320
PETROLEUM RESERVE CORP.						
STONEMAN FEDERAL STATE	M	1.00	142689			
1F 721S27E	M	1.00	142689			
PIPELINE TOTAL		6.82	11166		9687	2184
POOL TOTAL					191	320

DESCRIPTION	STAT	AF	FEB PROD	EPG FEB 07U	APR ALLOC	ACRE DELIV
BURTON FLAT MORROW (PRORATED GAS)						
LIBERTY OIL & GAS CORP.						
2E 1220S28E	M	1.00	2917		2917	320
MORRIS PRODUCING TEXAS AND NEW MEXICO						
FEDERAL STATE COM						
1F 421S27E	M	1.00	1130		1130	298
PIPELINE TOTAL		2.93	4238		4238	938
NATURAL GAS PIPELINE COMPANY OF AMERICA						
MORRIS R. ANIMEIL						
MESA STATE COM						
2E 421S27E	FM	1.00	2721		2721	320
CITIES SERVICE OIL AND GAS CORP.						
CANON A COM						
1F 921S27E	N	1.00	17469		5950	320
CITIES STATE						
1B 3020S27E	M	1.00	1837		1837	320
PIPELINE TOTAL		1.00	3171		3171	320
MESA PETROLEUM COMPANY						
HEADQUARTERS STATE COM						
1F 921S27E	M	1.00	8134		8134	320
YATES PETROLEUM CORPORATION						
STONEMAN FEDERAL STATE						
PIPELINE TOTAL		1.00	8134			
POOL TOTAL		4.00	8134			

BURTON FLAT STRAWN (PRORATED GAS) YAT APR ALLOC DELIV
 DESCRIPTION STAT AF FEB PRD 070

BURTON FLATS MOLECAMP, NO. (PRO GAS)
 CITIES SERVICE OIL COMPANY *****

CITIES SERVICE OIL AND GAS CORP.
 GOVERNMENT AA M 1.00 4989 4989 320 320
 GOVERNMENT AB M 1.00 6027 6027 320 320
 GOVERNMENT AC M 1.00 1351 1351 320 320
 GOVERNMENT AD M 1.00 9337 9337 320 320
 GOVERNMENT AE M 1.00 1234 1234 320 320
 GOVERNMENT AF M 1.00 10697 10697 320 320
 GOVERNMENT AG M 1.00 1053 1053 320 320
 GOVERNMENT AH M 1.00 6044 6044 320 320
 GOVERNMENT AI M 1.00 6789 6789 320 320
 GOVERNMENT AJ M 1.00 757 757 320 320
 PIPELINE TOTAL 10.00 58478 58478 3200

EL PASO NATURAL GAS COMPANY *****
 YATES PETROLEUM CORPORATION
 FEDERAL COM M 1.00 4 4 320 320
 PIPELINE TOTAL 1.00 4 4 320 320

PHILLIPS PETROLEUM COMPANY *****
 EXXON CORPORATION
 FEDERAL COM M 1.00 30421 30421 320 320
 JOHN R. SEAY *****
 USA 1 920528E M 1.00 1385 1385 320 320
 PIPELINE TOTAL 2.00 31806 31806 640 640
 POOL TOTAL 13.00 90288 90288 4160 4160

CARLSBAD MORROW, SO. (PRORATED GAS)
 EL PASO NATURAL GAS COMPANY *****
 ALPHA TIENTY-ONE PRODUCTION CO.
 BRC 18292527E N 1.00 8979 15086 320 320
 AMOCO PRODUCTION CO. *****
 MIDWEST FEDERAL GAS COM 8085 8085 320 320
 STATE M 1.00 3515 3515 320 320
 MORRIS R. ANTWELL *****
 MESA GRAVDE M 1.00 579 579 320 320
 BARUCH-FOSTER CORP. *****
 BEAR 11722527E M 1.00 1856 1856 320 320
 SAI 191722527E M 1.00 1990 1990 320 320
 CHEYRON U.S.A. INC *****
 EDDY CN STATE COM M 1.00 320 320 320 320
 GF 102823526E M 1.00 584 584 320 320
 K11623537E M 1.00 584 584 320 320
 CITIES SERVICE OIL AND GAS CORP. *****

APRIL 1986 SOUTHEAST GAS PRORATION SCHEDULE PAGE 12
 CARLSBAD MORROW, SO. (PRORATED GAS) FPG APR ALLOC DELIV
 DESCRIPTION STAT AF FEB PRD 070

PASLAY A COM N 1.00 7160 75357 320 320
 ENSTAR PETROLEUM FEDERAL DIV. OF ENSTAR CORP. *****
 ALLIED CHEMICAL FEDERAL 4374 4374 320 320
 ZE 324526E M 1.00 4374

CORINE GRACE *****
 AIRBORNE OIL CO. M 1.00 5609 5609 320 320
 GRACE 824326E M 1.00 399203 399203 320 320
 MICHAEL P. GRACE II *****
 GRACE ATLANTIC COM M 1.00 5609 5609 320 320
 HANMAN OPERATING CO. *****
 STATE M-4401 COM M 1.00 127 127 320 320
 MESA OPERATING LIMITED PARTNERSHIP *****
 BINDEN FEDERAL COM M 1.00 41 41 320 320
 MARQUESS COM M 1.00 235 235 320 320
 IN 923527E M 1.00 235

PHILLIPS PETROLEUM COMPANY *****
 DRAG A *****
 IC1823527E M 1.00 967 967 317 317
 TIOWELL A COM M 1.00 26 26 320 320
 WESTFALL A COM M 1.00 1722 1722 320 320
 SABLE PRODUCTION CO *****
 BELL 324526E M 1.00 5274 5274 320 320
 IN 324526E M 1.00 5274

SAMEDAN OIL CORPORATION *****
 CARLSBAD STATE COM M 1.00 1995 1995 320 320
 EXXON STATE COM M 1.00 4672 4672 320 320
 IN 324526E M 1.00 4672
 VINTAGE PETROLEUM, INC. *****
 ALLIED STATE M 1.00 172 172 320 320
 I11023526E M 1.00 172
 PIPELINE TOTAL 24.00 57922 661787 81432 7677

EL PASO NATURAL GAS AND LLANO *****
 BARUCH-FOSTER CORP. *****
 ALLIED 113122527E M 1.00 10029 10029 310 310
 LITTLE JEWEL COM M .97 10029
 IF 3122527E M .97 10029
 BELCO DEVELOPMENT CORPORATION *****
 MARTIN COM M 1.00 125 125 320 320
 IF 2022527E M 1.00 125
 EXXON CORPORATION GAS COM NO 4 *****
 SOUTH CARL 3880 GAS 4201 4201 320 320
 IN 2323526E M 1.00 4201
 PENNELL B COM M 1.00 9035 9035 320 320
 O'NEILL 11024526E M 1.00 9035
 PHILLIPS PETROLEUM COMPANY *****
 DRAG B COM M 1.00 2205 2205 317 317
 2C1923527E M 1.00 2205
 THE SUPERIOR OIL COMPANY *****
 RYAN COM M 1.00 11601 11601 319 319
 ID 523527E M 1.00 11601
 PIPELINE TOTAL 6.97 37196 37196 2226

HANON OIL CO. *****
 HAMAN OPERATING CO. *****
 FOREHAND 25 FEDERAL COM 14480 14480 320 320
 IN 223526E M 1.00 14480
 MOBIL FEDERAL *****
 IF 2523526E M 1.00 866 866 320 320
 14858-

APRIL 1986 SOUTHEAST GAS PRORATION SCHEDULE

CARLSBAD MORROW, SO. (PRORATED GAS)

Table with columns: DESCRIPTION, STAT, AF, FEB, PROD, IMP, FEB, 07U, APR, ALLOC, ACRE-DELIV. Rows include MERLAND B. CO. M, MERLAND B. CO. M, STRACKHEIM A. M, TRACY B. CO. M, COITTON PETROLEUM CORP., ENSTAR PETROLEUM CO., A DIV. OF ENSTAR CORP., GRACE ENERGY COMPANY, HUMBLE GRACE CO., CORINE GRACE CITY OF CARLSBAD CO., PENNZOIL COMPANY, GULF FEDERAL CO., MOBILE 12 FEDERAL, THE SUPERIOR OIL COMPANY, STEPHENS A, TUD. PRODUCTION CORPORATION, CITY OF CARLSBAD CO., PIPELINE TOTAL, POOL TOTAL, CATCLAW DRAM MORROW (PRORATED GAS), GAS CO. OF NEW MEXICO, ARCO OIL & GAS COMPANY, CHEVRON U.S.A. INC., DAVID FASKEN AVALON FEDERAL CO., QUINOCO PETROLEUM, INC., TEXACO INCORPORATED, PIPELINE TOTAL, LLAND INCORPORATED, QUINOCO PETROLEUM, INC.

APRIL 1986 SOUTHEAST GAS PRORATION SCHEDULE

CARLSBAD MORROW, SO. (PRORATED GAS)

Table with columns: DESCRIPTION, STAT, AF, FEB, PROD, HAM, FEB, 07U, APR, ALLOC, ACRE-DELIV. Rows include STATE X 3328, MERLAND B. CO. M, STRACKHEIM A. M, TRACY B. CO. M, COITTON PETROLEUM CORP., ENSTAR PETROLEUM CO., A DIV. OF ENSTAR CORP., GRACE ENERGY COMPANY, HUMBLE GRACE CO., CORINE GRACE CITY OF CARLSBAD CO., PENNZOIL COMPANY, GULF FEDERAL CO., MOBILE 12 FEDERAL, THE SUPERIOR OIL COMPANY, STEPHENS A, TUD. PRODUCTION CORPORATION, CITY OF CARLSBAD CO., PIPELINE TOTAL, POOL TOTAL, CATCLAW DRAM MORROW (PRORATED GAS), GAS CO. OF NEW MEXICO, ARCO OIL & GAS COMPANY, CHEVRON U.S.A. INC., DAVID FASKEN AVALON FEDERAL CO., QUINOCO PETROLEUM, INC., TEXACO INCORPORATED, PIPELINE TOTAL, LLAND INCORPORATED, QUINOCO PETROLEUM, INC.

CATCLAW DRAW HORROW (PRORATED GAS) L I
 DESCRIPTION STAT AF FEB APR ACRE-
 US FEED PROD DELIV

P. U. SUMMARY N 1.00	101080-	14937	640	640
402321825E(MMU)				
1402321825E(MMU)				
P. U. SUMMARY M 1.00				
562521825E(MMU)				
152521825E(MMU)				
P. U. SUMMARY M 1.00				
963521825E(MMU)				
PIPELINE TOTAL	101080-	14937	2560	640

LLAND INC AND GAS CO OF N. M. *****

EMCOR PETROLEUM INC	*****			
ALPHA TWENTY-ONE PRODUCTION CO.				
1051321825E(MMU)				
P. U. SUMMARY M 1.00				
QUINOCO PETROLEUM, INC.	*****			
CATCLAW DRAW UNIT				
462421825E(MMU)				
1242421825E(MMU)				
P. U. SUMMARY M 1.00				
771421825E(MMU)				
PIPELINE TOTAL	1920			640

SOUTHERN UNION GATHERING COMPANY *****

EMCOR PETROLEUM INC	*****			
CATCLAW DRAW UNIT				
1781421825E(MMU)				
PIPELINE TOTAL	7288-			

GROSSBY DEVONIAN (PRORATED GAS) *****

POOL TOTAL	12.86	1240	67863-	30965	7955
------------	-------	------	--------	-------	------

EL PASO NATURAL GAS COMPANY *****

CHEVRON U.S.A. INC	*****			
G. M. SHAHAN				
283325537E N 1.00	392	1312	160	160
UNION TEXAS PETROLEUM CORPORATION	*****			
GREGORY EL PASO FEDERAL				
103325537E M 1.00	4786	6098	160	160
PIPELINE TOTAL	2.00	17944	392	6098
POOL TOTAL	2.00	17944	392	6098

DOUBLE X WC, WEST (ABANDONED) *****

TRANSWESTERN PIPELINE COMPANY	*****			
MESA PETROLEUM COMPANY				
JOG STATE CO N 1.00	349500	15000	320	320
1L 224533E				
PIPELINE TOTAL	1.00	15000	320	320
POOL TOTAL	1.00	15000	320	320

ELKIN FUSSELLMAN, SOUTH (GAS) *****

MARCO INC.	*****			
ENSERCH EXPLORATION, INC.				
J.G. O'Brien				
2M30 7529E N .97	1017045	43650	308	308
PIPELINE TOTAL	.97	1017045	308	308
POOL TOTAL	.97	1017045	308	308

ELKIN FUSSELLMAN, SOUTH (GAS) MAP
 DESCRIPTION STAT AF FEB APR ACRE-
 US FEED PROD DELIV

EUMONT VATES 7 RWRS ON (PRO GAS)	*****			
EL PASO NATURAL GAS AND PHILLIPS PETROLEUM				
SUN EXPLORATION & PRODUCTION CO.				
A B 252521825E(MMU)				
P. U. SUMMARY N 1.00				
PIPELINE TOTAL	1.00	6098	99199-	5691

EL PASO NATURAL GAS COMPANY *****

ALPHA TWENTY-ONE PRODUCTION CO.	*****			
DURITY				
LC2019537E N .50	8986	2608	80	80
JO IN 619537E M 1.00	1583	1583	160	160
ONE ID 919537E M .50	1713	1713	80	80
STATE AC 519537E M 1.04	2445	2445	166	166
AMERADA HESS CORPORATION	*****			
STATE EU GAS CO				
1G 819537E M 1.00	4	4	160	160
STATE ME 4E1221825E N 1.00	6001	34593	169	169
STATE WE 4E1221825E M .75	230	230	120	120
STATE ME 4K 121825E M 1.00	6099	6099	160	160
AMOCO PRODUCTION CO	*****			
STATE EU GAS CO				
3A 2C2221825E M 1.00	18808	18808	160	160

ARGO OIL & GAS COMPANY *****

ERNEST C ADKINS	*****			
5H 921825E M 1.00	4250	4250	160	160
9D 921825E M 1.00	6421	6421	160	160
BARBER GAS CO				
1E 820537E N 2.00	18225	63778	320	320
J M BROWN				
1K 2521825E(MMU)	3981	3981	160	160
4N 2521825E(MMU)	1272	1272	160	160
P. U. SUMMARY M 1.00	5273	5273	160	160
BRD GAS CO				
2E 150230E(MMU)	3860	3860	320	320
3E 150230E(MMU)	5904	5904	160	160
P. U. SUMMARY N 2.00	52062	11382	320	320
J R PHILLIPS				
6I 3119537E N 1.00	7383-	5691	160	160
5E 3119537E(MMU)	3081	3081	160	160
6C 3119537E(MMU)	3185	3185	160	160
P. U. SUMMARY N 1.00	6266	14778	160	160
SELBY MAJORITY				
K 23519536E N .50	6404	11709	80	80
STATE 1517D				
4I 1221825E(MMU)	9656	9656	320	320
7N 1221825E(MMU)	1283	1283	160	160
P. U. SUMMARY M 2.00	11039	11039	320	320
STA 150230E(MMU)	11039	11039	320	320
2D 320537E M .50	2428	2428	80	80

BURKSON AND HUFF *****

MCDUFFERS	*****			
LC122182536E N 1.00	1511	1511	160	160

M. K. BYROM *****

J W COOPER	*****			
38 320537E M 1.00	1213	1213	160	160
2D 320537E M .50	428	428	80	80

CHEVRON U.S.A. INC *****

HART	*****			
LC2182536E M 2.00	1557	1557	320	320
H T MATERN CO				
31182182537E M 1.94	678	678	310	310
MEREDITH				
29192182536E N 1.00	7683	16170	160	160
CONOCO, INC.	*****			

Table with columns: EUMONT YATES 7 RVRS QN (PRO GAS), DESCRIPTION STAT AF, FEB PROD, APR ALLOC DELIV, EPG. Includes entries like BRITT A 18, BRITT B, BRITT C, BRITT D, BRITT E, BRITT F, BRITT G, BRITT H, BRITT I, BRITT J, BRITT K, BRITT L, BRITT M, BRITT N, BRITT O, BRITT P, BRITT Q, BRITT R, BRITT S, BRITT T, BRITT U, BRITT V, BRITT W, BRITT X, BRITT Y, BRITT Z.

Table with columns: EUMONT YATES 7 RVRS QN (PRO GAS), DESCRIPTION STAT AF, FEB PROD, APR ALLOC DELIV, EPG. Includes entries like STATE C 16, STATE C 17, STATE C 18, STATE C 19, STATE C 20, STATE C 21, STATE C 22, STATE C 23, STATE C 24, STATE C 25, STATE C 26, STATE C 27, STATE C 28, STATE C 29, STATE C 30, STATE C 31, STATE C 32, STATE C 33, STATE C 34, STATE C 35, STATE C 36, STATE C 37, STATE C 38, STATE C 39, STATE C 40.

EUMONT YATES 7 RVR5 QN (PRO GAS) EPG APRR ALLOC DEFCT

DESCRIPTION STAT AF FEBR PRDD D/U

TURNER STATE M 1.00 ***** 1505 200

GRANT WESTERN DRILLING COMPANY ***** 1505 200

DDYLE HARTMAN BAYOU WILLIAMS 103319537E M .75 2453 ***** 1505 200

RUBY CORP 101822537E M .50 6327 ***** 1505 200

ELL IOT B 6 1M 622537E M .46 1844 ***** 1505 200

R. H. HUSTON JR 1M 819537E M 1.00 2397 ***** 1505 200

MATHEW 1M 722537E M .98 1246 ***** 1505 200

J. K. HUGHES 1M 3619537E M .25 2758 ***** 1505 200

STATE 9021336E M 1.00 1257 ***** 1505 200

P. U. SOMMERS 4J205337E(MMU) 1.00 12915 ***** 1505 200

ELEN WEIR 1M 382537E M .75 6620 ***** 1505 200

WILSON STATE 1F3220536E M 1.75 56 ***** 1505 200

JOHN H. HENRIKX CORP MOD STATE A 2F1620537E M .50 2011 ***** 1505 200

KIRBY EXPLORATION CO. OF TEXAS 1M 162537E M 2.00 593 ***** 1505 200

NEW 12M1725337E M .25 ***** 1505 200

ME-TEX SUPPLY COMPANY WALLACE STATE 8K 321536E M 1.50 ***** 1505 200

PETRO LEWIS CORP MARLICK QUEEN 1A1921537E M 1.00 55 ***** 1505 200

SOFT PRODUCTION COMPANY HOUSTON COM 1K2119537E M 2.00 696 ***** 1505 200

SHELL WESTERN E & P INC. DEVOTING STATE COM 2.00 23040 ***** 1505 200

STATE 719537E M 1.00 103 ***** 1505 200

STATE A 2A1221535E M 1.00 9571 ***** 1505 200

STATE B 1E3619536E M 1.00 6291 ***** 1505 200

STATE C 1A2419536E M .50 ***** 1505 200

STATE G CUM 2H2421535E M 1.25 ***** 1505 200

STATE H 4E1121535E M 2.00 3615 ***** 1505 200

STATE I 121535E M 1.00 5909 ***** 1505 200

STATE 4P 121535E M 1.97 ***** 1505 200

SOHIO PETROLEUM COMPANY ALLES B 821537E M 1.00 986 ***** 1505 200

APRIL 1986 SOUTHEAST GAS PRORATION SCHEDULE PAGE 20

EUMONT YATES 7 RVR5 QN (PRO GAS) EPG APRR ALLOC DEFCT

DESCRIPTION STAT AF FEBR PRDD D/U

STATE 111221535E M .50 998 ***** 1711 160

STATE A 220536E M 1.00 1711 ***** 1711 160

TEXACO PRODUCING CO. D LUGLEMAN 3A1721536E N 1.00 ***** 1711 160

MONSTATE 211319536E M 1.00 561 ***** 1711 160

STATE A 4A 821536E M 1.00 3458 ***** 1711 160

STATE AF COM 1C1821537E M .71 1112 ***** 1711 160

STATE AY 1H9220537E M .50 3895 ***** 1711 160

STATE E COM 2E11621536E M 1.00 7791 ***** 1711 160

STATE F 4C 719537E M 1.00 11012 ***** 1711 160

STATE K COM 4K1320536E M 1.00 4576 ***** 1711 160

L VAN ETIEN 100 920537E N 1.00 14260 ***** 1711 160

THE WISER OIL CO MCQUATTERS 1J1121536E M .75 256 ***** 1711 160

ZACHRY OIL OPERATING COMPANY MARSHALL 111321536E M 1.00 1042 ***** 1711 160

VIA ENERGY, INC. ELL IOT FEDERAL 112620536E(MMU) 7778 ***** 1711 160

2J2620536E(MMU) 3707 ***** 1711 160

P. U. SOMMERS 1M 1.00 11485 ***** 1711 160

ELL IOT STATE 102720536E M .25 1327 ***** 1711 160

FALK STATE 1C3420536E M .25 607 ***** 1711 160

PIPELINE TOTAL 182.56 716458 ***** 1711 160

EL PASO NATURAL GAS AND NORTHERN NATURAL PIPELINE TOTAL 450220 ***** 1711 160

CHEVRON U.S.A. INC W A RAMSAY NCT A 1712721536E(MMU) 2000 ***** 1711 160

46E2721536E(MMU) 33418 ***** 1711 160

P. U. SOMMERS N 4.00 35418 ***** 1711 160

PIPELINE TOTAL 4.00 35418 ***** 1711 160

EL PASO NATURAL GAS AND WARREN PIPELINE SYS CONOCO B 1J1121536E(MMU) 57733 ***** 1711 160

GAS CO. OF NEW MEXICO BR1 31120537E(MMU) 57733 ***** 1711 160

P. U. SOMMERS N 1.00 57733 ***** 1711 160

PIPELINE TOTAL 1.00 57733 ***** 1711 160

ARCO OIL & GAS COMPANY COLEMAN 1C1721536E N .50 .802 ***** 1711 160

TEXACO PRODUCING CO. SHELLE 11621536E N 1.00 1917 ***** 1711 160

PIPELINE TOTAL 1.50 2719 ***** 1711 160

NORTHERN NATURAL GAS COMPANY AMERADA HESS CORPORATION 3M 2E0537E N .25 10751 ***** 1711 160

S ADKINS 3M 2E0537E N .25 10751 ***** 1711 160

T ANDERSON 1K 8230537E N .50 15835 ***** 1711 160

PIPELINE TOTAL 1.25 25442 ***** 1711 160

THE SUPERIOR OIL COMPANY STATE 12 ***** 1711 160

APRIL 1986 SOUTHEAST GAS PRORATION SCHEDULE

APRIL 1986 SOUTHEAST GAS PRORATION SCHEDULE

EUMONT YATES 7 RVRS QN (PRO GAS) NNG FEB 07U APRR ALLOC DELIV

Table with columns: DESCRIPTION, YATES, RVRS, QN, (PRO GAS), NNG, FEB 07U, APRR ALLOC, DELIV. Rows include various entities like H W ANDREWS, P. U. SUMMARY, STATE, etc.

DESCRIPTION	STAT	AF	FEB	FEB	APR	AGRE-
DESCRIPTION	STAT	AF	FEB	FEB	APR	AGRE-
C H KYTE	20	719937E	M	.50	3844	80
LEA D 2 STATE	34	719937E	M	.50	6352	80
HARRY LEONARD NCT	A	1.00	1665	1665	160	160
302221336E(MWU)			9352	16376		
12P 2244320E(MWU)			16376	39697		
HARDY J EDWARD NCT	C	3.00	1740	39697	480	480
943621336E(MWU)			4680			
943621336E(MWU)			188			
P. U. SUNDARY	M	2.00	6608		320	320
FRED LUTHER COM			8312		160	160
202919337E	M	1.00	552		320	320
H T MATTHEW NCT	A	2.00	723		388	388
102421336E	M	2.43	2876		480	480
H T MATTHEW NCT	D		2503		160	160
H T MATTHEW NCT	M		5379		160	160
H T MATTHEW NCT	M		11583		160	160
H T MATTHEW NCT	M		1417		160	160
H T MATTHEW NCT	M		614		160	160
H T MATTHEW NCT	M		8348		160	160
H T MATTHEW NCT	M		5473		236	236
H T MATTHEW NCT	M		8225		160	160
H T MATTHEW NCT	M		13478		160	160
H T MATTHEW NCT	M		1258		160	160
H T MATTHEW NCT	M		8789		160	160
H T MATTHEW NCT	M		11695		160	160
H T MATTHEW NCT	M		5490		160	160
H T MATTHEW NCT	M		2326		160	160
H T MATTHEW NCT	M		11205		480	480
H T MATTHEW NCT	M		9527		320	320
H T MATTHEW NCT	M		4837		160	160
H T MATTHEW NCT	M		14364		320	320
H T MATTHEW NCT	M		2754		160	160
H T MATTHEW NCT	M		530		160	160
H T MATTHEW NCT	M		3286		160	160
H T MATTHEW NCT	M		5691		160	160
H T MATTHEW NCT	M		2592		320	320
H T MATTHEW NCT	M		3638		320	320
H T MATTHEW NCT	M		6357		160	160
H T MATTHEW NCT	M		6670		320	320
H T MATTHEW NCT	M		358		200	200
H T MATTHEW NCT	M		7028		200	200
H T MATTHEW NCT	M		1.25		200	200

DESCRIPTION	STAT	AF	FEB	FEB	APR	AGRE-
DESCRIPTION	STAT	AF	FEB	FEB	APR	AGRE-
301319536E(MWU)			1170		5691	160
P. U. SUNDARY	N	1.00	15635		1241	160
ESTORIL PRODUCING CORP.			641		570	160
STANLEY FEDERAL	M	1.00	3906		1216	160
TURKLAND FEDERAL	M	1.00	7016		1013	320
IK2720537E	M	1.00	2396		14342	160
JAMES L EVANS			4268		22281	160
GULF STATE			6092			
IV 121535E	M	1.00	46748			
JOYCE HARTMAN			788			
STATE 28	N	.75	13798			
102819537E	N	.75	788			
RUBEN HONEYMAN, JR.			480			
WILLIAM A. AND EDWARD R. HUDSON			3408			
HUDSON PHILIPS COM	M	1.00	960			
183020537E	M	1.00	153			
KIRBY EXPLORATION CO. OF TEXAS			13798			
GILL	M	.96	788			
1M3121537E	M	.96	480			
MARATHON OIL COMPANY			13798			
BERNITA BARBER	M	2.00	788			
ELL 4301 STATE	M	1.00	480			
ELI 4301 STATE	M	1.00	480			
MCDONALD STATE AC	M	3.00	5116			
MCGRAW HILL STATE	M	.50	4003			
MCGRATH STATE	M	.50	1580			
IN2619536E	M	.50	625			
C J SAUNDERS	M	.50	1694			
IC 122536E	M	.50	1423			
MOBIL PRODUCING TEXAS AND NEW MEXICO			924			
E O CARSON	M	1.00	1986			
4N2819537E(MWU)			4833			
2503319537E(MWU)			7543			
P. U. SUNDARY	M	2.00	1694			
H CORRIAN	M	.75	6610			
GENERAL STATE	M	.25	1423			
201620537E	M	.25	1580			
PETRO LEWIS CORP			625			
MARLICK QUEEN	M	1.00	3947			
111921537E	M	1.00	684			
PHILLIPS PETROLEUM COMPANY			5709			
BERN A	M	1.00	45			
1P1419536E	M	1.00	2890			
HOBBS	M	1.00	1241			
4N1820937E	M	1.00	570			
LAND OFFICE	M	.25	684			
IK1919537E	M	.25	5709			
MEXICO	M	1.00	45			
NEW 181020537E	M	1.00	2890			
NEW 2H2620536E	M	.50	1241			
QUARAW COM	M	.50	570			
IP1020537E	M	1.00	1241			
SHELL WESTERN E & P INC.			570			
STATE F COM			1216			
112919537E	M	1.00	1013			
SOHIO PETROLEUM COMPANY			14342			
ALVES 1821537E	M	1.00	22281			
ALVES 1821537E	M	1.00	160			
IP 721537E	M	1.00	160			
SOUTHLAND ROYALTY COMPANY			160			
STATE F COM			160			
1M3520537E	M	2.00	160			
SUN EXPLORATION & PRODUCTION CO.			160			
J L BARR	M	1.00	160			
2L2419536E	M	1.00	160			
M B MAVERLEY	M	1.00	160			
5G3519536E	M	1.00	160			
SUN OIL COMPANY			160			
SUN OIL COMPANY			160			
M MARSHALL			160			

 23895-

EUMONT YATES 7 RVRs QN (PRO GAS)
 DESCRIPTION STAT AF FEB PRD
 21121336E M 1.00
 PHILLIPS PETROLEUM COMPANY
 APOLLO ENERGY INC.
 SIMPLAIR STATE
 G33520336E (MMU) 859
 213520336E (MMU) 2330
 213620336E (MMU) 3189
 P. U. S. SUMMARY M 1.00
 APOLLO OIL COMPANY
 DIVINE STATE
 L02920336E M -.50 1220
 ARCO OIL & GAS COMPANY
 STATE L BATTERY 5
 7C 321336E N .50 7007
 MILLARD DECK ESTATE
 STATE WCG GAS COM
 1H3420336E M 1.00 136
 SUN EXPLORATION & PRODUCTION CO.
 STATE WCG GAS COM
 2C3220336E M -.25 506
 A B RESERVE
 6A8220337E (MMU) 6098
 7C2920337E (MMU)
 WARRIOR INC.
 LEA 407 STATE
 4E 221335E N -.50 3513
 SEALE FEDERAL
 4A3420336E N .50 6197
 STATE OK
 11 321335E N -.25 781
 PIPELINE TOTAL 4.50 22549
 TEXACO PRODUCING, INC.

TEXACO PRODUCING CO.
 STATE WCG GAS COM
 2K1022337E M 1.50
 BAKER B
 CONOCO, INC.
 LOCKHART A
 111721337E N .50
 JOHN M HENDRIX CORP
 E W HALDEN
 601322337E M .50 1314
 MILLARD DECK ESTATE
 ALEXANDER
 1E 721337E M .23
 PIPELINE TOTAL 2.73 1314
 WARREN PETROLEUM CORPORATION
 CONDUCK, INC.
 BRITTS B 18
 STATE N 201337E (MMU)
 7E 1121336E N 1.00 507
 8R 121336E N 1.00 510
 MARATHON OIL COMPANY
 HANSEN STATE
 4H1620337E M 1.00
 TWO STATES OIL COMPANY
 COLE B STATE
 6H1622337E M 2.00 254
 PIPELINE TOTAL 5.00 1271
 POOL TOTAL 430.94 2342813
 GRAMA RIDGE WOLFCAMP (GAS)

APRIL 1986 SOUTHEAST GAS PRORATION SCHEDULE NNG FEB 07U 160 APR ALLOC 160
 EUMONT YATES 7 RVRs QN (PRO GAS)
 DESCRIPTION STAT AF FEB PRD
 21121336E M 1.00
 PHILLIPS PETROLEUM COMPANY
 APOLLO ENERGY INC.
 SIMPLAIR STATE
 G33520336E (MMU) 859
 213520336E (MMU) 2330
 213620336E (MMU) 3189
 P. U. S. SUMMARY M 1.00
 APOLLO OIL COMPANY
 DIVINE STATE
 L02920336E M -.50 1220
 ARCO OIL & GAS COMPANY
 STATE L BATTERY 5
 7C 321336E N .50 7007
 MILLARD DECK ESTATE
 STATE WCG GAS COM
 1H3420336E M 1.00 136
 SUN EXPLORATION & PRODUCTION CO.
 STATE WCG GAS COM
 2C3220336E M -.25 506
 A B RESERVE
 6A8220337E (MMU) 6098
 7C2920337E (MMU)
 WARRIOR INC.
 LEA 407 STATE
 4E 221335E N -.50 3513
 SEALE FEDERAL
 4A3420336E N .50 6197
 STATE OK
 11 321335E N -.25 781
 PIPELINE TOTAL 4.50 22549
 TEXACO PRODUCING, INC.

TEXACO PRODUCING CO.
 STATE WCG GAS COM
 2K1022337E M 1.50
 BAKER B
 CONOCO, INC.
 LOCKHART A
 111721337E N .50
 JOHN M HENDRIX CORP
 E W HALDEN
 601322337E M .50 1314
 MILLARD DECK ESTATE
 ALEXANDER
 1E 721337E M .23
 PIPELINE TOTAL 2.73 1314
 WARREN PETROLEUM CORPORATION
 CONDUCK, INC.
 BRITTS B 18
 STATE N 201337E (MMU)
 7E 1121336E N 1.00 507
 8R 121336E N 1.00 510
 MARATHON OIL COMPANY
 HANSEN STATE
 4H1620337E M 1.00
 TWO STATES OIL COMPANY
 COLE B STATE
 6H1622337E M 2.00 254
 PIPELINE TOTAL 5.00 1271
 POOL TOTAL 430.94 2342813
 GRAMA RIDGE WOLFCAMP (GAS)

GRAMA RIDGE WOLF-CAMP (GAS) APRIL 1986 SOUTHEAST GAS PRODUCTION SCHEDULE PAGE 28

DESCRIPTION STAT AF FEB PRD FEB APR AGREE- DELIV

LLANO INCORPORATED *****

TEJACO PRODUCING CO. ***** 268333- 640 640

GETTY 36 STATE COM. N 1.00 120 1401796 75000 320 179166- 659

PIPELINE TOTAL 1.00 120 75000 320 *****

POOL TOTAL 1.00 120 1401796 75000 320 *****

INDIAN BASIN MORROW (PRODUCED GAS) *****

DAVID FASKEN *****

INDIAN HILLS UNIT 1.00 1611 1611 640 214498-

INDIAN HILLS UNIT COM A 1.00 5507 5507 640 70581

SKELLY FEDERAL COM. M .50 893 893 320 66586

PIPELINE TOTAL 2.50 8011 8011 1600 832726

GAS CO. OF NEW MEXICO *****

FLAG REEFERN OIL CO *****

WINSTON GAS COM. M 1.00 16921 16921 640 21948

PIPELINE TOTAL 1.00 16921 16921 640 *****

MARATHON OIL COMPANY *****

KERR-MCGEE CORPORATION *****

MARATHON OIL COMPANY *****

INDIAN BASIN B GAS COM *****

INDIAN BASIN B GAS COM *****

INDIAN BASIN A *****

INDIAN BASIN C *****

INDIAN BASIN D *****

INDIAN BASIN E *****

INDIAN BASIN F *****

INDIAN BASIN G *****

INDIAN BASIN H *****

INDIAN BASIN I *****

INDIAN BASIN UPPER PENN. (PRO GAS) APRIL 1986 SOUTHEAST GAS PRODUCTION SCHEDULE PAGE 28

DESCRIPTION STAT AF FEB PRD FEB APR AGREE- DELIV

INDIAN BASIN UPPER PENN. (PRO GAS) *****

FEDERAL 1523E N 1.00 117808 268333- 640

ID 622524E N 1.03 124441 179166- 659

ARC OIL & GAS COMPANY *****

SMITH FEDERAL *****

IC 122523E M 1.05 *****

CHEVRON U.S.A. INC *****

BOGUE FLATS UNIT *****

BOGUE FLATS UNIT A *****

FEDERAL 33 GAS COM *****

HELBING FEDERAL GAS *****

ROBERT MCDONALD *****

BURNETT FEDERAL *****

WEST 101123E BASIN *****

MINI 1721523E N 1.00 107966 15123-

KANER OPERATING CO, LTD *****

MERRISON GAS COM *****

KERR-MCGEE CORPORATION *****

MARATHON OIL COMPANY *****

FEDERAL 142132E N 1.00 86057 35060-

FEDERAL 142132E N 1.00 86057 66586

FEDERAL 142132E N 1.00 86057 640

FEDERAL 142132E N 1.00 86057 640

INDIAN BASIN GAS COM. M .30 10964 11458

INDIAN BASIN GAS COM. M 1.00 7775 19976

INDIAN BASIN A *****

INDIAN BASIN B *****

INDIAN BASIN C *****

MAR FEB D/J APR AGREE- DELIV

APRIL	1986	SOUTHEAST GAS PROPRATION SCHEDULE	EPG	PAGE 33
JALMAT TANSILL Y7 7 RVR5 (PRO GAS)	DESCRIPTION STAT AF	FEB PRD	APR ALLOC	ACRE-DELIV
AGMOTT KANSAY	M 1.00	402	402	160
1P 225336E				

2611	160	2611	160	160

21211	160	7159	160	160

1619	160	1619	160	160
5369	120	5369	120	120
7212-				
56066	400	17898	400	400
166114				
1321	160	1321	160	160
7159	160	7159	160	160
3580	80	3580	80	80
2474	160	2474	160	160
9351	160	7159	160	160
1801	40	1790	40	40
508	160	2769	160	160
1790	40	1790	40	40
1369	120	1369	120	120
4659	160	4659	160	160
3993	160	7159	160	160
157	80	3580	80	80
15253-				
7159	160	7159	160	160
5369	120	5369	120	120
7159	160	7159	160	160
22840	160	7159	160	160
12055	120	5369	120	120
3327	80	3580	80	80
25677	160	7159	160	160
1052	160	1052	160	160
26260	160	7159	160	160
8994-	80	3580	80	80
33160	160	7159	160	160

APRIL	1986	SOUTHEAST GAS PROPRATION SCHEDULE	EPG	PAGE 34
JALMAT TANSILL Y7 7 RVR5 (PRO GAS)	DESCRIPTION STAT AF	FEB PRD	APR ALLOC	ACRE-DELIV
P. U. SUMMARY	N .75	8609	5369	120
LATE THOMAS		454		
1M1724537E(MWJ)		10114		
3M1724537E(MWJ)		22110		
P. U. SUMMARY	N 2.00	6741	14318	320
MAR10262133E		6741		
MUNAHADISON	N .50	3746	3580	80
1A 724537E	N .50	3746	3580	80
1A 724537E	N .50	3746	3580	80
C MYERS	N .50	3746	3580	80
2M 524537E	M 1.00	2473	2433	160
9P 624537E	M 1.00	2276	2276	160
OLSON-BLINEBRY		10333		
1L292337E(MWJ)		10333		
2M 524537E(MWJ)		10333		
P. U. SUMMARY	N 1.00	5450	7159	160
ELL RECORD FOUND	N 1.00	5450	7159	160
PHILLIPS-FOULSTON	S2337E2MCCY	1102		
H S 145336E	M .50	1102	1102	80
4R23336E	M .25	13945	252	40
4R23336E	M .25	13945	252	40
SAMEJAN HUGHES	STATE	24697		
1L192337E	N 1.00	5450	7159	160
SANTA FE FEDERAL		272		
1M272537E	M .75	272	272	120
SHELL STATE		326		
2P132336E(MWJ)		6115		
5J132336E(MWJ)		6441		
P. U. SUMMARY	N 1.00	3255	7159	160
10BY 3L 724537E	N .50	3255	3580	80
WELLS		47		
1A 22337E(MWJ)		5312		
1G SUMMARY	N 1.00	885	7159	160
WELLS FEDERAL		4226		
17J 524537E(MWJ)		5111		
P. U. SUMMARY	N 1.25	2516	8949	200
1A 22337E(MWJ)		4226		
19D 424537E(MWJ)		6758		
P. U. SUMMARY	N 1.00	409	7159	160
3K 424537E(MWJ)		4705		
18M 424537E(MWJ)		5114		
P. U. SUMMARY	N .75	5024	5369	120
4F 524537E(MWJ)		6274		
P. U. SUMMARY	N 1.00	11340	7159	160
15D 524537E(MWJ)		219	279	200
E 11N 424537E	M 1.25	62		
13L 22337E(MWJ)		652		
13L 22337E(MWJ)		652		
P. U. SUMMARY	N .75	6564	5369	120
WINNINGHAM		133		
13022537E(MWJ)		133		
21922537E(MWJ)		133		
801922537E(MWJ)		133		
9B302537E(MWJ)		133		
P. U. SUMMARY	N 3.00	133	21477	480
WINTERS		1240		
10L192537E	M .75	1240	1240	120
WOOLKORTH		2759		
1P264536E	N .50	6636	3580	80
NORTH SHORE WOODWORTH		6636		
6L334537E(MWJ)		698		
3L334537E(MWJ)		698		
P. U. SUMMARY	N 1.00	6758	7159	160
HCH EXPLORATION INC.		*****		
R W C 1124536E	M .75	1266	1266	120
R W C 1124536E	M .75	1266	1266	120
R W C 1124536E	M .75	1266	1266	120
H E E 1302337E	M .50	60	60	80
H E E 1302337E	M .50	60	60	80
E F KING	M 1.00	111	111	160
2M332536E	M 1.00	111	111	160
10L122336E	N 1.00	4740	7159	160
KERN CO. COPPER		*****		
EUNICE		*****		
1P1124536E	M .75	1266	1266	120
KIRBY EXPLORATION CO. OF TEXAS		*****		
NEWARK STATE	M 1.00	502	502	160
42192537E	M 1.00	399	339	160
10L192537E	M 1.00	399	339	160
BERRYARD LANEFORD JR		*****		
SPEAR STATE		*****		
1F 226537E	M 1.00	7679	7679	160

JALMAT TANSILL VT 7 RWRS (PRO GAS) FEB PRO APR ALLOC DELIV JALMAT TANSILL VT 7 RWRS (PRO GAS) FEB PRO APR ALLOC DELIV JALMAT TANSILL VT 7 RWRS (PRO GAS) FEB PRO APR ALLOC DELIV

LEWIS B-BURLESON, INC. ***** SUN EXPLORATION & PRODUCTION CO. *****

AKCO FEDERAL M 1.00 40 160 120
 AZTEC 2H2125537E N .25 2493 1790 40 579
 COOK 1K2125537E M 1.00 293 160 887
 OVEBA1225537E M 1.00 293 160 168
 FEDER1225537E M 1.00 5575 5575 160
 GUTMAN 1I2925537E M .50 145 80 442
 HADFIELD 1O2125537E(MMU) 120 3335 120 28315
 P. U. SUMMARY M .75 3335 71057
 HARRISON 2P2125537E(MMU) M 2935 2935
 LANE 2N2225537E M 1.00 2935 2935
 LEONARD 3L2225537E M .75 1394 1394
 P. U. SUMMARY M .50 1534 1534
 SAUNDERS 2F2225537E M 1.00 1517 1517
 STATE 1A2522536E NC 3547 17969-
 WOODWORTH 2K3324537E M .50 884 884

MARALQ INES *****
 JAMES 8F125537E M .50 179 80
 MAGUIE 1N182537E M .50 321 80
 MARATHON OIL COMPANY *****
 MCGONNELL 2225537E(MMU) 723
 P. U. SUMMARY M 3.75 723
 MARITIME PETROLEUM CORPORATION *****
 CLOSSON B 2413022536E M 1.00 1434 160

DALLAS MCGASLAND *****
 CHR 1M232536E M 1.00 3414 160
 CHR 1S114536E M 1.00 1220 160
 DEVON 1L22252536E M 1.00 2380 160
 HILL MCGASLAND INDO. *****
 LITTE 3D252536E M 1.00 1024 160
 LITTE 3M2824537E(MMU) 323
 P. U. SUMMARY M 1.00 2832
 MOBILE PRODUCING TEXAS AND NEW MEXICO *****
 LIBERTY 3L325537E M 1.00 1822 160

PHILLIPS PETROLEUM COMPANY *****
 C U 1M 022537E M 1.00 184 160
 M C 2H 022537E M 1.00 1102 160
 M C WOODWORTH 4J3324537E M 2.00 1234 320

READING & BATES PETROLEUM CO. *****
 HUMBLE 1L STATE M .75 1822 120
 SARA ENERGY INC *****
 LANGLE 1E25537E M .75 2440 120
 SANTA FE ENERGY CO. *****
 WELLS 8 6 625537E M .25 915 40

SOUTHLAND ROYALTY COMPANY *****
 WOODWORTH 3J2824537E M 2.00 1236 320

COOPER B *****
 P. U. SUMMARY M 1.00 699 160
 COOPER G 1K1125536E M 2.00 887 320
 J W COOPER 36E M 1.00 168 160
 MYERS B 2H 122536E M 1.00 442 160
 PEER 2E 2E2536E COM 1.00 6812 28315
 STATE 2I 2I2536E COM 1.00 71057 71057
 P. U. SUMMARY M 1.25 706 28315
 6E 1E122536E M 2.00 2015 1209
 13F 422536E M .50 4684 8672
 16A1122536E(MMU) 4684 8672
 29C1122536E(MMU) 5017 8672
 P. U. SUMMARY M 3.00 5017 119
 18M 422536E(MMU) 4017 8672
 2N132536E(MMU) 4017 8672
 2N132536E(MMU) 4017 8672
 P. U. SUMMARY M 3.00 1289 9159
 3E 2E2536E(MMU) 1289 1064
 3E 2E2536E(MMU) 58 1289
 3E 2E2536E(MMU) 58 1289
 3E 2E2536E(MMU) 58 1289
 P. U. SUMMARY M 3.00 7079 7426
 26G 322536E(MMU) 7426 499
 27E 2E2536E(MMU) 2836 499
 105H232536E(MMU) 2174 499
 5303 5303 499
 P. U. SUMMARY M 2.00 10313 320
 31H 152536E(MMU) 10313 320
 31H 152536E(MMU) 2883 438
 P. U. SUMMARY M 1.75 2883 249
 37L 022536E(MMU) 800 249
 37L 022536E(MMU) 54 249
 P. U. SUMMARY M 1.50 54 249
 38M 102536E(MMU) 1341 249
 P. U. SUMMARY M 2.00 1341 249
 97F222536E M 1.00 1651 249
 11IN 422536E M 1.50 1651 249
 STATE A 4C 2 1392 120
 5A 722536E M 1.00 90 120
 121 722536E(MMU) 1392 120
 14B1122536E(MMU) 90 120
 36M1122536E(MMU) 90 120
 42E 1122536E(MMU) 90 120
 62K1122536E(MMU) 90 120
 P. U. SUMMARY M 4.00 20414 640
 27P 322536E(MMU) 573 640
 28K 822536E(MMU) 2132 640
 29K 822536E(MMU) 5566 480
 52U SUMMARY M 3.00 8845 480
 40A 922536E(MMU) 6039 480
 63C 922536E(MMU) 14884 480
 P. U. SUMMARY M 2.00 32145 480
 41M 522536E M 1.00 14318 320
 41M 522536E M 1.00 208 160
 49C 822536E M .50 38 80
 STATE A 4C 3 COM A 11324 160
 211023336E M 1.00 2312 160
 211023336E M 1.00 1063 355

TEXACO PRODUCING CO. *****
 A L CHRISTMAS 1720262536E M 1.00 2271 160
 COOPER 4L UNIT 24411824537E M 1.00 638 160
 J W COOPER 36E M 1.00 39528 160
 M H 3N122536E N 1.00 3517 80
 KING C 1G 725537E M .50 4415 168
 KING D 1C 125336E N 1.05 7517 168
 IE 625337E M 1.02 187 163

JALMAY TINSILL YI 7 RVRs (PROD GAS) TEX APR ALLOC ACCT-
 DESCRIPTION STAT AF FEB PROD DELIV
 4F2C22536E(MMU) M 44 2508 70
 P. U. SUMMARY M 44 2508
 PIPELINE TOTAL 2.88 1370 620

WARREN PETROLEUM CORPORATION
 HGM EXPLORATION INC. *****
 HGM EXPLORATION INC. *****
 HGM EXPLORATION INC. *****
 PIPELINE TOTAL .00

POOL TOTAL 359.62 948784 1830778 1057409 57695

JUSTIS GLORIETA (PRODUCED GAS)
 EL PASO NATURAL GAS COMPANY *****
 ALPHA THERY-ONE PRODUCTION CO. *****
 JUSTIS REFEED COM 4190
 201125537E(MMU) 1884
 301125537E(MMU) 6074
 P. U. SUMMARY N 2.00
 AMERADA HESS CORPORATION *****
 STATE NJ A COM 1.00
 3A 225537E M 1.00
 ARGD OIL & GAS COMPANY *****
 EATON B 1 MN 1.00 910
 1E122537E N 1.00 910

CHEVRON U.S.A. INC *****
 AKN 20162537E M 2.00 680
 LEAPY ARBUFEINTON 2.00
 7M1325537E N 2.00
 EL PASO EXPLORATION CO. *****
 LANGRIS FEDERAL M 2.00
 111425537E M 2.00
 EL PASO NATURAL GAS COMPANY *****
 CARLSON B FEDERAL 18278-
 1K2525537E N 2.00
 JOHN H. HENDRIX CORP *****
 MIMBEL 12613
 1M2325537E N 1.00 314

MERIDIAN OIL INCORPORATED *****
 CARLSON FEDERAL M 2.00 1800
 CARLSON A FEDERAL 14733-
 1P2325537E N 2.00
 OIL DEVELOPMENT COMPANY OF TEXAS *****
 CARLSON A 25 4205
 1J2525537E M 2.00 4205

TEXACO INCORPORATED *****
 G L COOKIN B FEDERAL NCT 2 9390
 C C 208324937E FEDERAL NCT 2 2770
 805324937E M 2.00 2770
 TEXACO PRODUCING CO. *****
 A B COATES C 15933-
 1P2425537E N 2.00 834
 PIPELINE TOTAL 25.00 26977 25903-
 POOL TOTAL 25.00 26977 25903-

MONUMENT MCKEE ELLEN(PRODUCED GAS)
 EL PASO NATURAL GAS COMPANY *****
 ARCO OIL & GAS COMPANY 386
 J R PHILLIPS A 386
 9M3119537E M 1.00 386

APRIL 1986 SOUTHEAST GAS PRODUCTION SCHEDULE PAGE 40

MONUMENT MCKEE ELLEN(PRODUCED GAS) EPG APR ALLOC ACCT-
 DESCRIPTION STAT AF FEB PROD DELIV
 PIPELINE TOTAL 1.00 386 386
 GULF & EL PASO *****
 CHEVRON U.S.A. INC *****
 G C MATTHEWS 5036-
 61 620537E N 1.00 13306 10925 160
 PIPELINE TOTAL 1.00 13306 10925 160

NORTHERN NATURAL GAS COMPANY *****
 AMERADA HESS CORPORATION *****
 L M LAMBERT 1150
 2G 620537E M 1.00 1150
 J R PHILLIPS 8370
 5A 120536E M 1.00 8370
 PIPELINE TOTAL 2.00 9520 9520 320

TRANSWESTERN PIPELINE COMPANY *****
 TEXACO INCORPORATED *****
 J R PHILLIPS 25019-
 11D 620537E N 1.00 14848 10925 160
 PIPELINE TOTAL 1.00 14848 10925 160
 POOL TOTAL 5.00 38060 31756 900

PARKWAY ATOKA, WEST (PRODUCED GAS)
 EL PASO NATURAL GAS COMPANY *****
 ENTEX PETROLEUM INC *****
 PARKWAY WEST UNIT 1664
 3K2919529E N 1.00 1664
 10G21719529E N 1.00 167
 PIPELINE TOTAL 3.00 2417 4022424 180000 960

POOL TOTAL 3.00 2417 4022424 180000 960
 TUBB (PRODUCED GAS)
 EL PASO NATURAL GAS COMPANY *****
 ARCO OIL & GAS COMPANY *****
 SARKKEY 502321537E M 1.00
 J. R. COVE *****
 ANDERSON 1370
 11Z121537E M .25 1370
 EUBANK 211537E M 1.00 2004 2004 160

CONOCO INC *****
 ELLIOTT B 5 COM AC 1 2607
 311522537E N 1.00 2607 5695 160
 HAWK B 1 1690
 7P 921537E M 1.00 1690 1690 160
 HAWK B 1 AC 1 862
 3C 921537E M 1.00 862 862 160
 HAWK B 3 1537E M 1.00 862 862 160
 LOCKHART 4 27 438
 10Z121537E M 1.00 438 438 160
 LOCKHART 13 31 806
 10G132537E M 1.00 806 806 160
 M E WAND 92242
 9J2121537E M 1.00 999 999 160

EXXON CORPORATION *****
 J L GREENWOOD *****

DESCRIPTION STAT AF	FEB PROD	APR ALLOC	ACRE-DEVT	APR ALLOC	ACRE-DEVT	FEB PROD	APR ALLOC	ACRE-DEVT
101 502537E M 1.00 1960		1960	160	1960	160		1960	160
101 502537E M 1.00 3209	28644	5695	160	5695	160		5695	160
101 502537E M 1.00 547	2756	5695	160	5695	160		5695	160
101 502537E M 1.00 6091		4271	120	4271	120		4271	120
101 502537E M 1.00 12231-		1028	160	1028	160		1028	160
101 502537E M 1.00 185		5695	160	5695	160		5695	160
101 502537E M 1.00 1028	30698							
101 502537E M 1.00 4236								
101 502537E M 1.00 336		5695	160	5695	160		5695	160
101 502537E M 1.00 55	29699	55	160	55	160		55	160
101 502537E M 1.00 22331	1611-	5695	160	5695	160		5695	160
101 502537E M 1.00 2237E24L001B								
101 502537E M 1.00 2652		5695	160	5695	160		5695	160
101 502537E M 1.00 917		917	160	917	160		917	160
101 502537E M 1.00 1362		5695	160	5695	160		5695	160
101 502537E M 1.00 630	20141-	630	160	630	160		630	160
101 502537E M 1.00 12402-		5695	160	5695	160		5695	160
101 502537E M 1.00 35937-	*	1424	40	1424	40		1424	40
101 502537E M 1.00 2026	29401-	5695	160	5695	160		5695	160
101 502537E M 1.00 3665-		5695	160	5695	160		5695	160
101 502537E M 1.00 4368								
101 502537E M 1.00 4260	9211-	5695	160	5695	160		5695	160
101 502537E M 1.00 595	595	595	120	595	120		595	120
101 502537E M 1.00 204	204	204	78	204	78		204	78
101 502537E M 1.00 6295		5695	160	5695	160		5695	160
101 502537E M 1.00 984		984	160	984	160		984	160
101 502537E M 1.00 79986	34804	104001	5038	104001	5038		104001	5038
101 502537E M 1.00 182		182	80	182	80		182	80
101 502537E M 1.00 2221		2221	160	2221	160		2221	160
101 502537E M 1.00 325		325	80	325	80		325	80
101 502537E M 1.00 422		422	160	422	160		422	160
101 502537E M 1.00 15166		5695	160	5695	160		5695	160
101 502537E M 1.00 28	7529-							
101 502537E M 1.00 5566		2848	80	2848	80		2848	80
101 502537E M 1.00 1185	2987	1185	120	1185	120		1185	120
101 502537E M 1.00 11859		4271	120	4271	120		4271	120
101 502537E M 1.00 1334	229-	1334	160	1334	160		1334	160

DESCRIPTION STAT AF	FEB PROD	APR ALLOC	ACRE-DEVT	APR ALLOC	ACRE-DEVT	FEB PROD	APR ALLOC	ACRE-DEVT
101 502537E M 1.00 7793		2848	80	2848	80		2848	80
101 502537E M 1.00 13083-		1291	120	1291	120		1291	120
101 502537E M 1.00 5695		5695	160	5695	160		5695	160
101 502537E M 1.00 4271		4271	120	4271	120		4271	120
101 502537E M 1.00 5763		5695	160	5695	160		5695	160
101 502537E M 1.00 2339		5695	160	5695	160		5695	160
101 502537E M 1.00 1225		1225	160	1225	160		1225	160
101 502537E M 1.00 816		816	80	816	80		816	80
101 502537E M 1.00 19683		5695	160	5695	160		5695	160
101 502537E M 1.00 1029		1029	160	1029	160		1029	160
101 502537E M 1.00 340		340	160	340	160		340	160
101 502537E M 1.00 12225		5695	160	5695	160		5695	160
101 502537E M 1.00 10427		5695	160	5695	160		5695	160
101 502537E M 1.00 631		631	80	631	80		631	80
101 502537E M 1.00 1795		1795	160	1795	160		1795	160
101 502537E M 1.00 16355		5695	160	5695	160		5695	160
101 502537E M 1.00 22751-								
101 502537E M 1.00 11734		5695	160	5695	160		5695	160
101 502537E M 1.00 4558		4558	160	4558	160		4558	160
101 502537E M 1.00 258		258	160	258	160		258	160
101 502537E M 1.00 16184		16184	160	16184	160		16184	160
101 502537E M 1.00 168		283	160	283	160		283	160
101 502537E M 1.00 2006		2006	160	2006	160		2006	160
101 502537E M 1.00 45		45	80	45	80		45	80
101 502537E M 1.00 9330		5695	160	5695	160		5695	160
101 502537E M 1.00 4202								
101 502537E M 1.00 13532		3236-						
101 502537E M 1.00 733		733	160	733	160		733	160
101 502537E M 1.00 2769		2769	79	2769	79		2769	79
101 502537E M 1.00 7763		4271	120	4271	120		4271	120
101 502537E M 1.00 8757								
101 502537E M 1.00 16480		17366-						
101 502537E M 1.00 160		160	160	160	160		160	160

DESCRIPTION	STAT	AF	FEBD	APRC	ACRE-
TUBB (PRORATED GAS)	US		PRD	ALLO	DELIV
S E LONG					
5011222337E(MMU)			8563		
P. U. SUMMARY	N	1.00	8563		
MARSHALL COM			597		
503421537E	M	1.00	597		
PENROSE-ZACHARY OPERATING CO					
HINDEN					
5012222337E	N	1.00	4673		
SONHO NATURAL RESOURCES COMPANY					
HINDEN					
3012222337E	M	1.00	7515		
HINTON BATTERY 2	M	1.00	4274		
1001322337E	M	1.00	4274		
ELLIOTT HINTON					
1E12222337E	M	1.00	1177		
SUN EXPLORATION & PRODUCTION CO.					
ELLLOTTA					
2H2121537E NC			4173		
SUN OIL COMPANY					
50 922337E	M	1.00	1375		
LINAM HARDY GAS COM					
1A2921537E	N	1.00	4353		
E W WALDEN					
4C15222337E	M	1.00	2900		
TEXACO INCORPORATED					
BAKER					
701022337E	M	1.50	894		
A H BELMERRY FEDERAL NCT					
1019222337E	N	1.00	1524		
2302922337E	N	1.00	1184		
A H BELMERRY FEDERAL NCT					
1065174237E	FEDERAL	80	1495		
A H BELMERRY FEDERAL NCT					
1031275337E	M	1.00	9922		
A H BELMERRY FEDERAL NCT					
1031275337E	M	1.00	1093		
A H BELMERRY FEDERAL NCT					
1031275337E	M	1.00	1093		
P. U. SUMMARY	N	1.00	743		
E A STICHER					
4L 422337E	M	1.00	976		
UNION TEXAS PETROLEUM CORPORATION					
WESTERN FEDERAL					
ID 523538E	M	1.13			
THE MISER OIL CO					
RIMMALL					
ID 422337E	N	.25	5844		
PIPELINE TOTAL					
			339164		

DESCRIPTION	STAT	AF	FEBD	APRC	ACRE-
TUBB (PRORATED GAS)	US		PRD	ALLO	DELIV
4F2621537E(MMU)			189		
P. U. SUMMARY	N	1.00	1361		
PIPELINE TOTAL					
			38363		
WARREN PETROLEUM CORPORATION					
ARCO OIL & GAS COMPANY					
A M YORK					
LH2021537E	N	.50	2248		
CITIES SERVICE COMPANY					
BRUNSON					
3M 322537E(MMU)			298		
PIPELINE TOTAL					
			.50		
POOL TOTAL			98.69		
			460620		
APRIL 1986 SOUTHEAST LIMITED PRODUCTION SECTION					
DESCRIPTION	PF		FEBD	APRC	ACRE-
			PRD	ALLO	DELIV
SOUTH EMPIRE MORROW GAS					
CABOT PIPELINE CORP					
AMOCO PRODUCTION CORP					
EMLINE SOUTH DEEP					
215017528E	.50		18472		
			9959		
			46140		
					320