

EXHIBIT NO. 3
CASE NO. 9302

This is a plat of the existing or proposed non-standard proration units in the north half of Section 1, T25N, R3W.

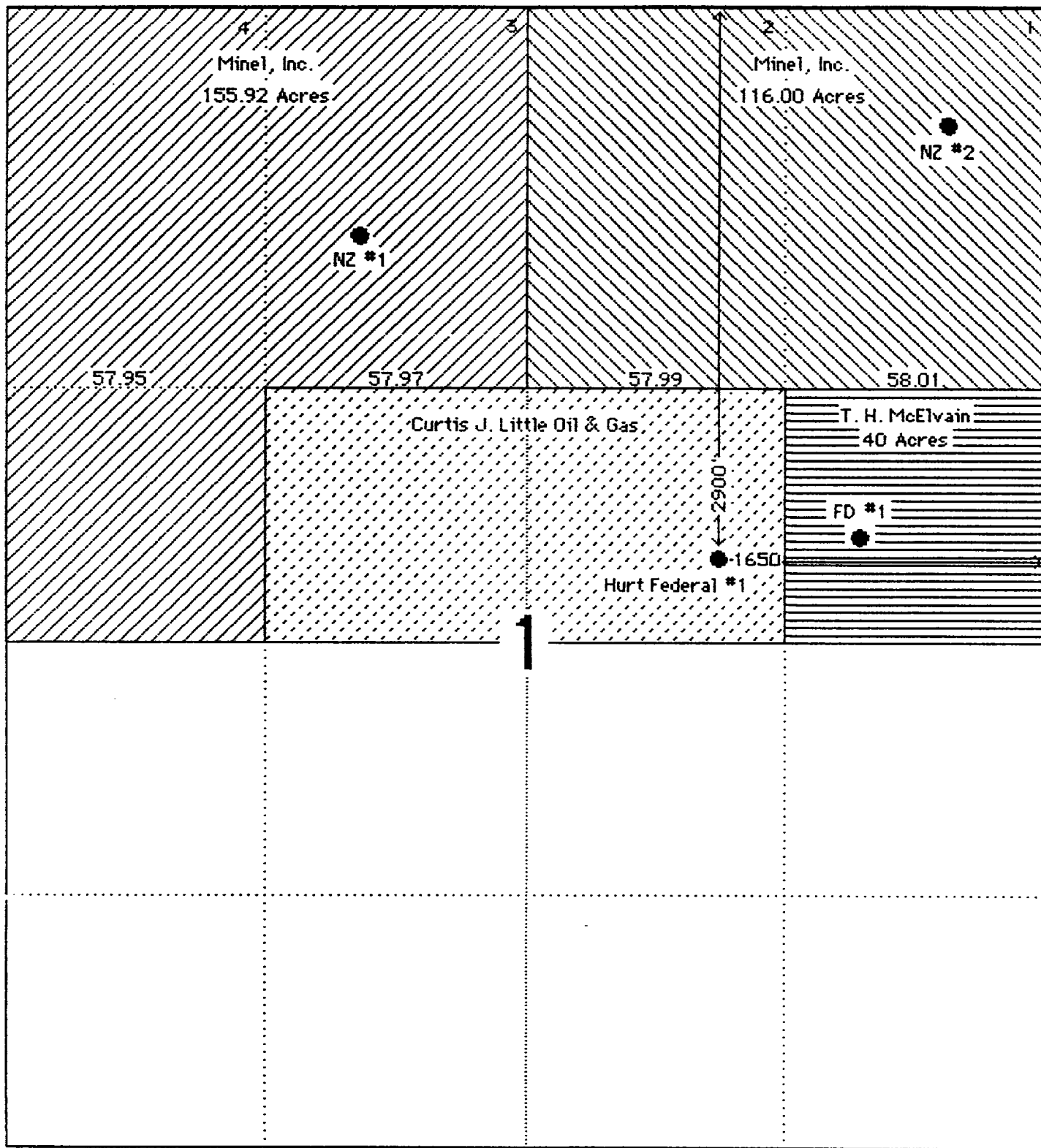
Our proposed unit is shown by the short dashes near the center of the plat.

Mine1, Inc. has applied for a 155.92-acre non-standard proration unit which is comprised of Lots 3 and 4, plus the SW/4 NW/4 of Section 1. It is identified by oblique lines from upper right to lower left on this exhibit.

Mine1 has also applied for a 116.00-acre non-standard proration unit which is comprised of Lots 1 and 2 of Section 1. It is identified by the lines which slope from upper left to lower right.

T. H. McElvain Oil and Gas Properties has applied for a 40-acre non-standard proration unit which is the SE/4 NE/4 of Section 1 as shown by the narrow-spaced horizontal lines.

T 25 N, R 3 W



BEFORE EXAMINER STOGNER
OIL CONSERVATION DIVISION

LITTLE EXHIBIT NO. 3

CASE NO. 9302