

COMPANY				HIXON DEVELOPMENT COMPANY					
WELL				CENTRAL BISTI UNIT #97					
FIELD				BISTI					
COUNTY				SAN JUAN		STATE		NEW MEXICO	
LOCATION				2310' FSL & 1650' FEL,					
API SERIAL NO.				SEC		TWP		RANGE	
				7		25-N		12-W	
				Other Services: CNL/LDT					

Permanent Datum: G.L.; Elev.: 6297
 Log Measured From K.B. 12 Ft. Above Perm. Datum
 Drilling Measured From K.B.
 Elev.: K.B. 6309
 D.F. 6308
 G.L. 6297

Date	4-7-84									
Run No.	ONE									
Depth—Driller	5060									
Depth—Logger (Schl.)	5054									
Btm. Log Interval	5045									
Top Log Interval	208									
Casing—Driller	8.625 @ 202									
Casing—Logger	208									
Bit Size	7 7/8									
Type Fluid in Hole	FRESH GEL									
Dens.	Visc.		8.8		38					
pH	Fluid Loss		9.5		8.0 ml					
Source of Sample			TANK							
Rm @ Meas. Temp.	Rmf @ Meas. Temp.		Rmc @ Meas. Temp.		RM @ BHT					
1.95 @ 62 °F	2.06 @ 55 °F		2.12 @ 62 °F		.940 @ 136 °F					
Source: Rmf			Rmc		M					
M	M									
Circulation Stopped			1630							
Logger on Bottom			2330							
Max. Rec. Temp.	Equip. Location		136		F					
8206	FARM									
Recorded By			MAURER/LINK							
Witnessed By			CORRETT							

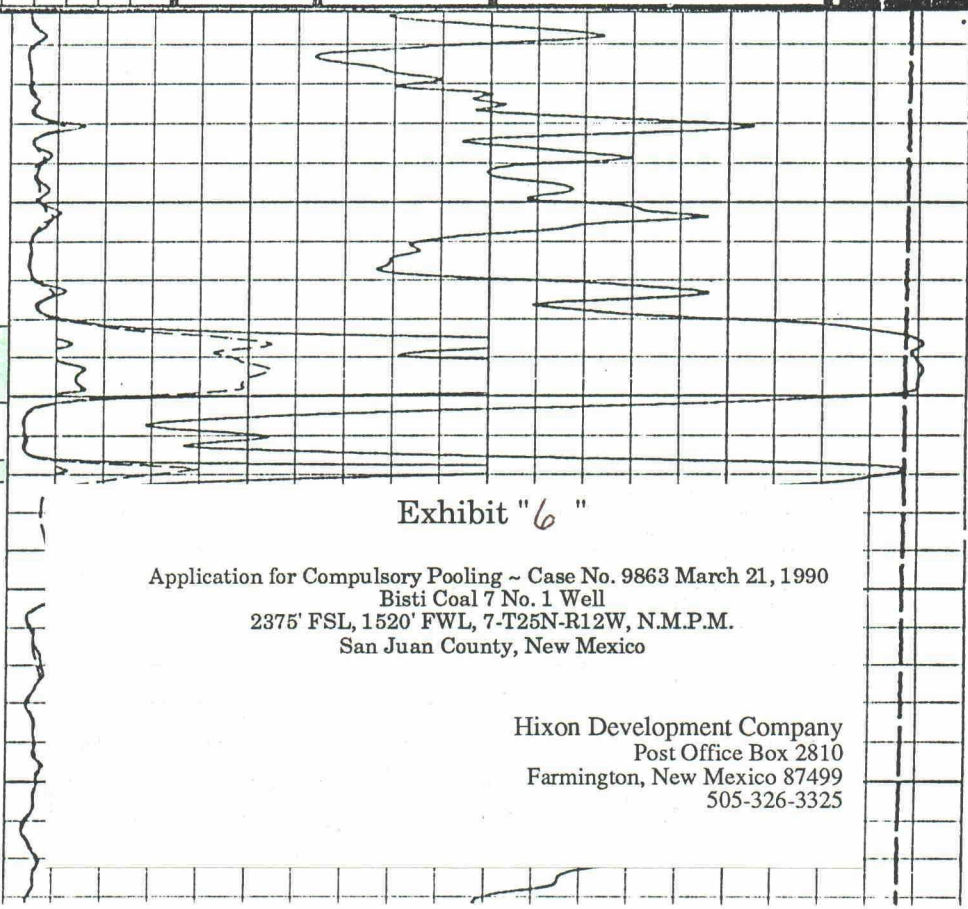


Exhibit "6"

Application for Compulsory Pooling ~ Case No. 9863 March 21, 1990
Bisti Coal 7 No. 1 Well
2375' FSL, 1520' FWL, 7-T25N-R12W, N.M.P.M.
San Juan County, New Mexico

Hixon Development Company
Post Office Box 2810
Farmington, New Mexico 87499
505-326-3325

