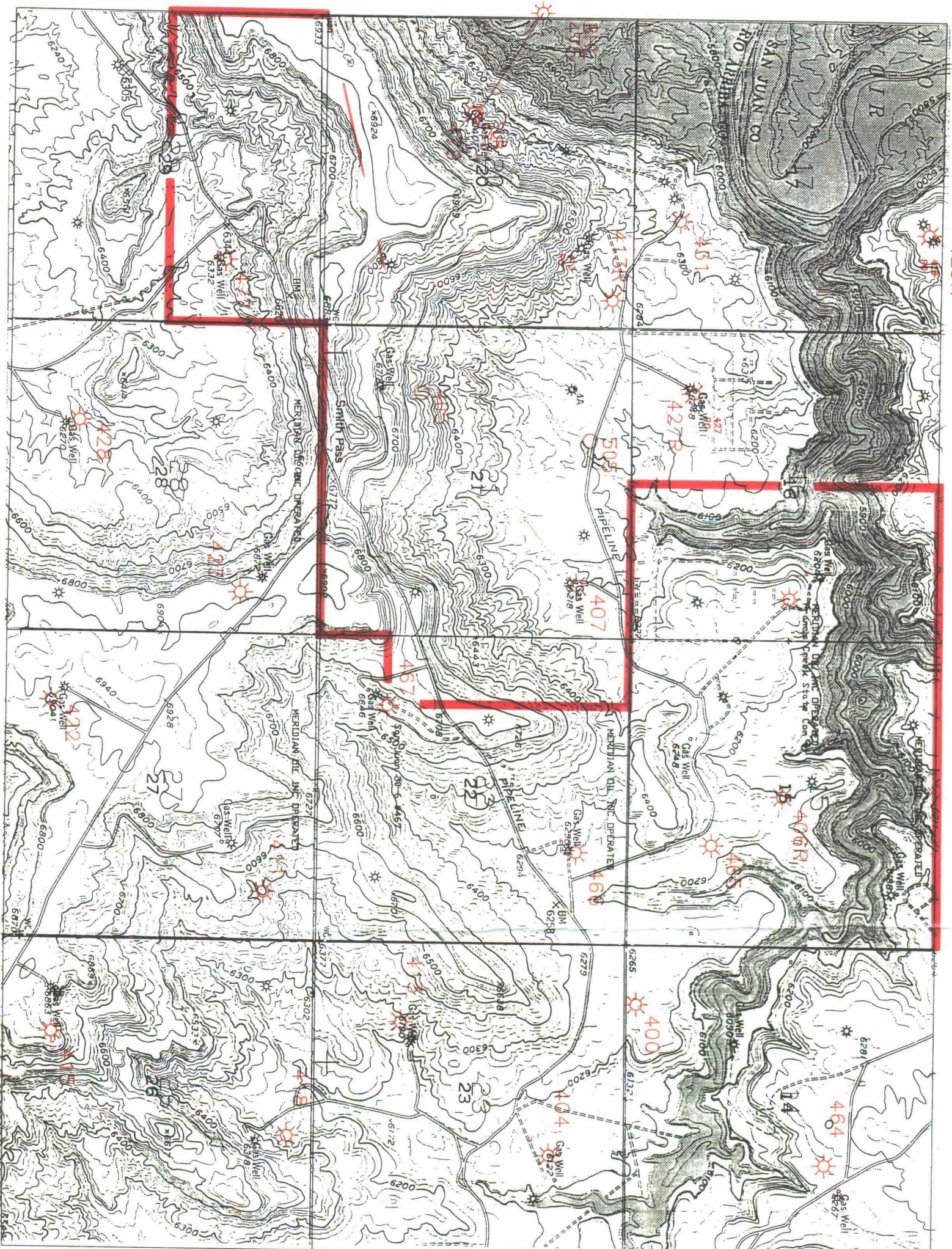


CASE NUMBER: 10456

EXHIBIT NUMBER: 2

R 7 W

429R



T
30
N

- 477 Fruitland Coal Gas Well
- 423 Fruitland Coal Pressure Observation Well
- Mesaverde Gas Well

NORTHEAST BLANCO UNIT
 RIO ARRIBA COUNTY, NEW MEXICO

Topographic Map



Date: 3/92