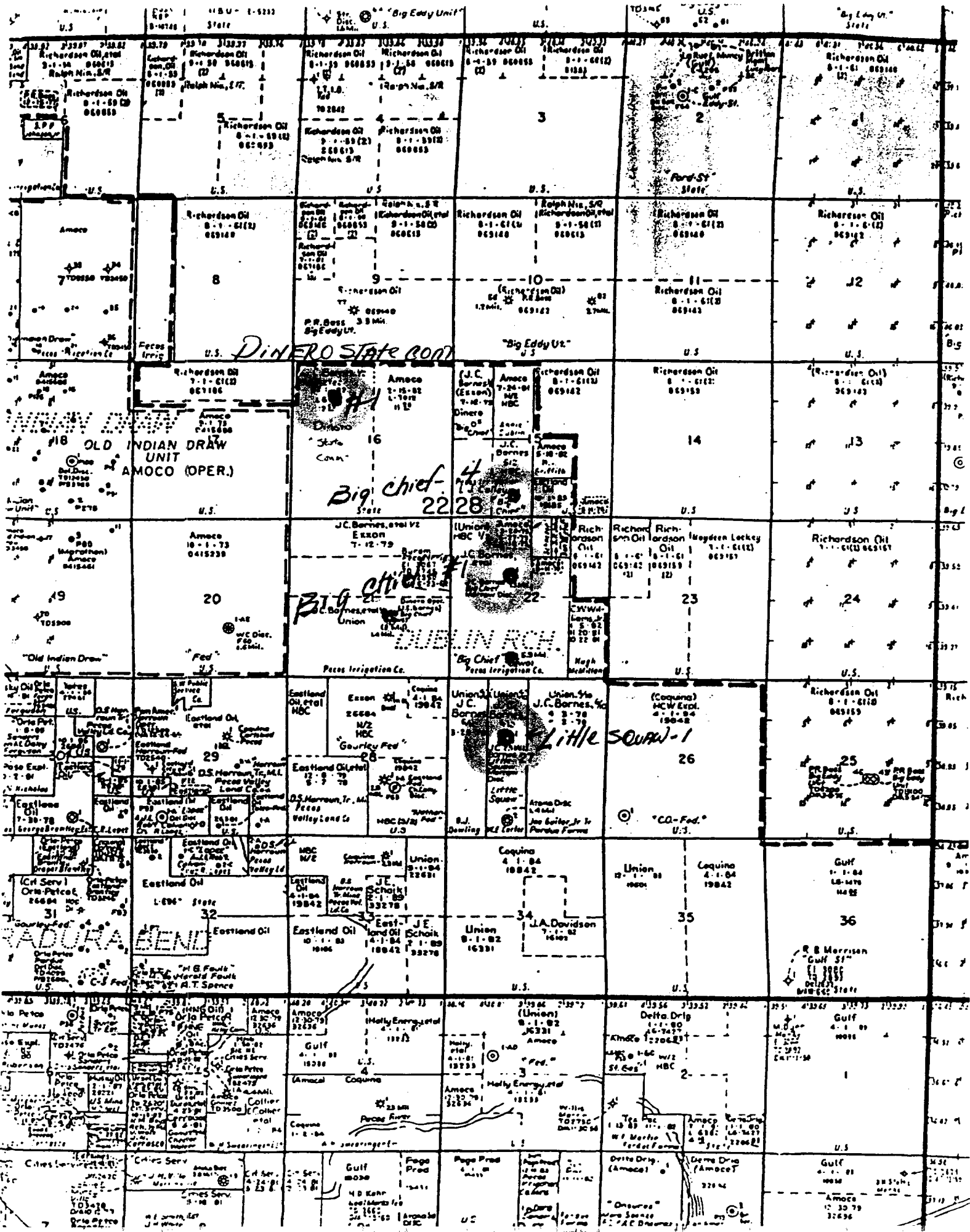


DOC# 2584
EXHIBIT # 2
CASE# 8218,19,20,21



NEW MEXICO OIL CONSERVATION COMMISSION WELL LOCATION AND ACREAGE DEDICATION PLAT

Form C-102
Supersedes C-128
Effective 1-4-65

All distances must be from the outer boundaries of the Section.

| | | | | | |
|------------------------------------------|--------------------------------------|-------------------------|-----------------------------------|------------------------------------------|---------------------------------------|
| Owner J. C. Barnes Oil Company | | | Lease ' Big Chief Comm. | | Well No. One |
| Well Letter F | Section 22 | Township 22-S | Range 28-E | County Eddy County, New Mexico | |
| Actual Footage Location of Well: | | | | | |
| 1980 | | feet from the North | line and | 1980 | feet from the West |
| Ground Level Elev. 3095' | Producing Formation Morrow | | Pool Undesignated | | Dedicated Acreage 320 Acres |

1. Outline the acreage dedicated to the subject well by colored pencil or hatchure marks on the plat below.
2. If more than one lease is dedicated to the well, outline each and identify the ownership thereof (both as to working interest and royalty).
3. If more than one lease of different ownership is dedicated to the well, have the interests of all owners been consolidated by communitization, unitization, force-pooling, etc?

☒ Yes ☐ No If answer is "yes," type of consolidation Communitization

If answer is "no," list the owners and tract descriptions which have actually been consolidated. (Use reverse side of this form if necessary.)

No allowable will be assigned to the well until all interests have been consolidated (by communitization, unitization, forced-pooling, or otherwise) or until a non-standard unit, eliminating such interests, has been approved by the Commission.

| | | | | |
|----------------------|--|-------|-------------------------|---------------|
| J. C. BARNES 780' | | 1980' | AMOCO | RICH. E. BASS |
| | | | Schneider-Vonnegut, Sr. | |
| 22 | | | | U.S. |
| Pecos Irrigation Co. | | | | |

| | |
|-----------------------------------------------------------------------------------------------------------------------------------------------------------------------------------------------------------------------------|--------------------------|
| CERTIFICATION | |
| I hereby certify that the information contained herein is true and complete to the best of my knowledge and belief. | |
| Name | <i>Russell R. Remick</i> |
| Position | President |
| Company | J. C. Barnes Oil Company |
| Date | <i>January 24, 1979</i> |
| I hereby certify that the well location shown on this plat was plotted from field notes of actual surveys made by me or under my supervision, and that the same is true and correct to the best of my knowledge and belief. | |
| March 9, 1978 | |
| Date Surveyed | |
| Orig. signed by-W. D. Watson, | |
| Registered Professional Engineer and/or Land Surveyor | |
| 3959 | |

**NEW MEXICO OIL CONSERVATION COMMISSION
WELL LOCATION AND ACREAGE DEDICATION PLAT**

Form C-102
Supersedes C-128
Effective 1-1-65

All distances must be from the outer boundaries of the Section.

| | | | | | |
|-----------------------------------|--------------------------------------|-----------------------------|---------------------------------|-----------------------|-------------------|
| J. C. Barnes Oil Company | | | Lease # Big Chief | | Well No. 4 |
| Init Letter N | Section 15 | Township 22S | Range 28E | County Eddy | |
| Actual Footage Location of Well: | | | | | |
| 1980 | feet from the West | line and 660 | feet from the South | line | |
| Ground Level Elev. 3101 | Producing Formation Morrow | Pool Dublin Ranch | Dedicated Acreage 320 | | Acres |

1. Outline the acreage dedicated to the subject well by colored pencil or hachure marks on the plat below.
2. If more than one lease is dedicated to the well, outline each and identify the ownership thereof (both as to working interest and royalty).
3. If more than one lease of different ownership is dedicated to the well, have the interests of all owners been consolidated by communitization, unitization, force-pooling, etc?

☒ Yes ☐ No If answer is "yes," type of consolidation Comm.

If answer is "no," list the owners and tract descriptions which have actually been consolidated. (Use reverse side of this form if necessary.)

No allowable will be assigned to the well until all interests have been consolidated (by communitization, unitization, forced-pooling, or otherwise) or until a non-standard unit, eliminating such interests, has been approved by the Commission.

| | | | | |
|--------------|---------------------------------|-------------------------|-----------------------------------|--------------------------------------------------------------------------------------------------------------------------------------------------------------------------------------------------------------------------------------------------------------------------------------------------------------------------------------------------------------------------------------------------------------------------------------------------------------------------------------------------------------------------------------------------------------------------------------|
| EXXON | AMOCO | RICHARDSON | BASS | <p align="center">CERTIFICATION</p> <p>I hereby certify that the information contained herein is true and complete to the best of my knowledge and belief.</p> <p><i>[Signature]</i> Name _____ Field Supt.</p> <p>Position J. C. BARNES OIL COMPANY</p> <p>Company May 25, 1979</p> <p>Date</p> |
| | J22S | R28E | FEDERAL O. & G. | |
| | | | | |
| | | | | |
| EXXON | PECOS IRRIGATION | AMOCO | RICHARDSON-BASS | <p>I hereby certify that the well location shown on this plat was located from field notes of a registered surveyor made by me or under my supervision, and that the same is true and correct to the best of my knowledge and belief.</p> <p align="center">REGISTERED PROFESSIONAL ENGINEER AND LAND SURVEYOR WILSON D. WATSON, JR. No. 3959 NEW MEXICO</p> <p>May 11, 1979</p> <p>Date Surveyed</p> <p>W. D. Watson, Jr. Registered Professional Engineer and/or Land Surveyor</p> <p><i>[Signature]</i> Certificate No. _____</p> |
| OPERATOR: | J. C. BARNES OIL COMPANY | | | |
| | | GRIFFETH | | |
| | PECOS IRRIGATION | EASTLAND OIL CO. | FEDERAL O. & G. 069142 | |
| 1980' | Q#4 | | | |
| | 660' | | | |
| | H. GRANDI | FEDERAL | | |

**NEW MEXICO OIL CONSERVATION COMMISSION
WELL LOCATION AND ACREAGE DEDICATION PLAT**

Form C-102
Supersedes C-128
Effective 1-1-65

All distances must be from the outer boundaries of the Section.

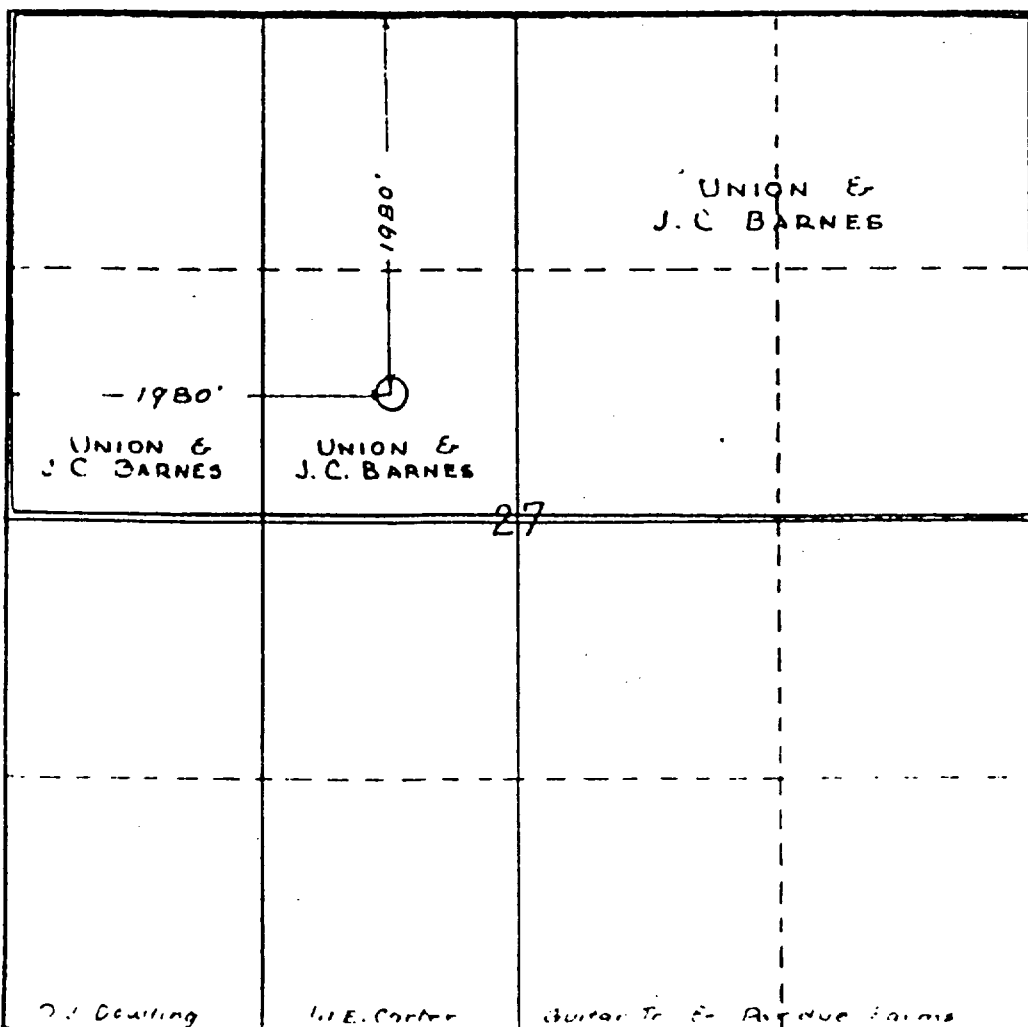
| | | | | | |
|----------------------------------------------------------------------------------------------------------------------------------------------------------------------------------------------------------------|--------------------------------------|-----------------------------|------------------------------------|------------------------------------------|------------------------|
| Owner J. C. Barnes Oil Company | | | Lease Little Squaw Comm. | | Well No. One |
| Well Letter F | Section 27 | Township 22-S | Range 28-E | County Eddy County, New Mexico | |
| Actual Footage Location of Well: <div style="display: flex; justify-content: space-between;"> 1980 feet from the West line and 1980 feet from the North line </div> | | | | | |
| Ground Level Elev. 3074' | Producing Formation Morrow | Pool Undesignated | | Dedicated Acreage: 320 Acres | |

1. Outline the acreage dedicated to the subject well by colored pencil or hatchure marks on the plat below.
2. If more than one lease is dedicated to the well, outline each and identify the ownership thereof (both as to working interest and royalty).
3. If more than one lease of different ownership is dedicated to the well, have the interests of all owners been consolidated by communitization, unitization, force-pooling, etc?

☒ Yes ☐ No If answer is "yes," type of consolidation Communitization

If answer is "no," list the owners and tract descriptions which have actually been consolidated. (Use reverse side of this form if necessary.) _____

No allowable will be assigned to the well until all interests have been consolidated (by communitization, unitization, forced-pooling, or otherwise) or until a non-standard unit, eliminating such interests, has been approved by the Commission.



CERTIFICATION

I hereby certify that the information contained herein is true and complete to the best of my knowledge and belief.

Russell J. Hamel
Name

President

Position

J. C. Barnes Oil Company

Company

January 24, 1979
Date

I hereby certify that the well location shown on this plat was plotted from field notes of actual surveys made by me or under my supervision, and that the same is true and correct to the best of my knowledge and belief.

March 9, 1978

Date Surveyed

Orig. signed by W. D. Watson,

Registered Professional Engineer
and/or Land Surveyor

3959

Certificate No.

NEW MEXICO OIL CONSERVATION COMMISSION
WELL LOCATION AND ACREAGE DEDICATION AT

Form C-102
Superseded C-128
Effective 1-1-65

All distances must be from the outer boundaries of the Section

| | | | | |
|-----------------------------------------|--------------------------------------|-----------------------------------------|----------------------------------|-----------------------|
| Operator Dinero Operating Co. | | Lease Dinero State Comm. | | Well No. 1 |
| Section C | Range 16 | Meridian 22 South | Range 2S East | County Eddy |
| A. Well Location of Well: | | | | |
| 660 feet from the north line and | | 1980 feet from the west line | | |
| Spot Level Elev. 3082.6 | Producing Formation Morrow | Pool W.D. Dublin Ranch Morrow | Indicated Acreage: 320 | |

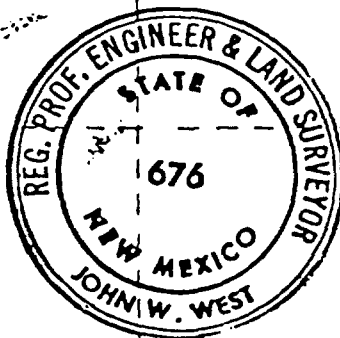
1. Outline the acreage dedicated to the subject well by colored pencil or hachure marks on the plat below.
2. If more than one lease is dedicated to the well, outline each and identify the ownership thereof (both as to working interest and royalty).
3. If more than one lease of different ownership is dedicated to the well, have the interests of all owners been consolidated by communitization, unitization, force-pooling, etc?

☒ Yes ☐ No If answer is "yes," type of consolidation Communitization

If answer is "no," list the owners and tract descriptions which have actually been consolidated (Use reverse side of this form if necessary.)

No allowable will be assigned to the well until all interests have been consolidated (by communitization, unitization, forced-pooling, or otherwise) or until a non-standard unit, eliminating such interests, has been approved by the Commission.

| | |
|-----------------------------------------------------------------------------------|----------------------------------------------------------------------|
| DINERO OPERATING COMPANY | |
| DINERO STATE COMM. NO. 1 | |
| <u>Southland Royalty</u> 160 acres-50% W.I. in dedicated acreage LG-0018 | <u>Amoco</u> 160 acres-50% W.I. in dedicated acreage L-7012 |
| DINERO OPERATING COMPANY | |
| STATE | |



CERTIFICATION

I hereby certify that the information contained herein is true and complete to the best of my knowledge and belief

L. C. McClure

L. C. MCCLURE

FIELD SUPT.

DINERO OPERATING COMPANY

June 15, 1981

I hereby certify that the well location shown on this plat was plotted from field notes of actual surveys made by me or under my supervision, and that the same is true and correct to the best of my knowledge and belief

June 5 & 6, 1981

Registered Professional Engineer and Land Surveyor

John W. West