

CAMPBELL & BLACK, P.A.

LAWYERS

JACK M. CAMPBELL  
BRUCE D. BLACK  
MICHAEL B. CAMPBELL  
WILLIAM F. CARR  
BRADFORD C. BERGE  
J. SCOTT HALL  
PETER N. IVES  
JOHN H. BEMIS

GUADALUPE PLACE  
SUITE 1 - 110 NORTH GUADALUPE  
POST OFFICE BOX 2208  
SANTA FE, NEW MEXICO 87504-2208  
TELEPHONE: (505) 988-4421  
TELECOPIER: (505) 983-6043

April 7, 1986

Richard L. Stamets, Director  
Oil Conservation Division  
New Mexico Department of  
Energy and Minerals  
State Land Office Building  
Santa Fe, New Mexico 87501

RECEIVED

APR 7 1986

OIL CONSERVATION DIVISION

Re: Cases 8219 and 8220: Applications of Dinero Operating  
Company for Hardship Gas Well Classification, Eddy  
County, New Mexico.

Dear Mr. Stamets:

This letter is to request that the above-referenced cases,  
scheduled for hearing de novo before the full Commission on  
April 9, 1986, be dismissed.

Your attention to this request is appreciated.

Very truly yours,

*William F. Carr*  
William F. Carr

WFC/cv

cc: Mr. Jim Dewey  
Dinero Operating Company

**D I N E R O**

P.O. DRAWER 10505  
MIDLAND, TEXAS 79702

January 23, 1986

*For Don Novak  
File*

Oil Conservation Division  
State Land Office Building  
Old Santa Fe Trail  
Santa Fe, New Mexico 87501

RECEIVED  
JAN 28 1986  
OIL CONSERVATION DIVISION

Attention: Richard L. Stamets:

In Re: Big Chief #4, Little  
Squaw #1, Eddy County,  
New Mexico

Dear Mr. Stamets:

Enclosed please find all the information dealing with the above referenced leases for classification as Hardship Gas Wells.

We have submitted same to our attorney, Mr. Bill Karr, who should be in contact with your office.

If there is anything further that is needed, please do not hesitate to contact our office.

Sincerely,

DINERO OPERATING COMPANY

*Dana Ralston*

Dana Ralston  
Production Clerk

/dr  
enc.  
cc: District II  
324 W. Main  
Artesia, New Mexico 88210  
Attention: L. A. Clements

# DINERO

P.O. DRAWER 10505  
MIDLAND, TEXAS 79702

JANUARY 20, 1986

RECEIVED

JAN 21 1986

OIL CONSERVATION DIVISION

Oil Conservation Division  
P.O. Box 2088  
Santa Fe, New Mexico 87501

Attention: Richard L. Stamets

Dear Mr. Stamets:

Enclosed please find log off test concerning the following wells:

- A. Big Chief #1
- B. Big Chief #2
- C. Big Chief #4
- D. Little Squaw #1

If there is anything further needed by your office, please feel free to contact us.

Sincerely,

DINERO OPERATING COMPANY



L. C. McClure  
Production Foreman

enc. (4)

LCM/dr

cc: District II  
P.O. Drawer DD  
Artesia, New Mexico 88210  
Attn: L. A. Clements

BIG CHIEF #1

EDDY COUNTY, NEW MEXICO

Productio pryok to test--see reports.

July 26, 1985

Open well to pit, rate of flow came down to 53 MCF for 18 hours, then pressure dropped to 0.

July 27, 1985

Attempt to flow, but decided to close in for pressure build-up to unload water.

July 28, 1985

Take well off test, attempt to unload without swabbing.

Compressor Rental - 2304.28  
COST TO RUN 15 MCF = 48.45  
PUMPER. 296.68

# GAS WELL REPORT

LEASE

DATE B A M.	CHART	DIP	PRESSURE		CHOKE	HEATER TEMP.	SEPARATOR		STOCK TANK		LIQUID PRODUCTION	DATE SEALS ON	ESTIMATED MCF
			TUBING	CASING			PRESS.	TEMP.	FT.	IN.			
15 448	Big Chief	3.6	100		Full	86			0	10			.108
16 427		3.4	100		Full	90			0	10			.104
17 448		3.6	100		Full	90			0	10			.108
18 528		3.4	100		Full	84			0	10			.108
19 448		3.4	100		Full	88			0	10			.102
20 424		3.4	100		Full	84			0	10			.099
21 425		3.4	100		Full	84			0	10			.101

CE SIZE 11 1/2 4548

REMARKS

2258

SIGNATURE	CHARLIE WILLIAMS
PRINTED IN U.S.A.	

NEWELL 143-1 BOX 800 TULSA OK 74101

## GAS WELL REPORT

CASE	Big Chief				WELL NO.	1	DATES-FROM		July 21, 1985		TO		July 28, 1985	
DATE 8 A M	CHART		PRESSURE		CHOKE	HEATER TEMP.	SEPARATOR		STOCK TANK		LIQUID PRODUCTION	DATE SEALS ON	ESTIMATED MCF	
	DIF.	TUBING	CASING	PRESS.			TEMP	FT.	IN.					
22	5.75	0	600		Full	94			0	10			0	
23	5.75	2.8	100		Full	90			0	10			.096	
24	-	-	400		Full	-			0	10			0	
25	-	-	400		Full	-			0	10			0	
26	-	-	80	14 1/4	Full	-			0	10			0	
27	-	-	320	14 1/4	Full	-			0	10			0	
28	-	-	1100	14 1/4	Full	-			0	10			0	
									</					

1/2" 4548 REMARKS 7-22 Started compressor. 7-23 Shut well in  
 7-25 Kolor Kut. for test. 7-24 Flaring well.  
 0-3 oil 7-25 Shut well in for test.  
 0-7 water 7-26 thru 7-28 well shut in. Signature Charlie Williams

Kroff 143-1 BOX 800 TULSA OK 74101

PRINTED IN U.S.A.

## GAS WELL REPORT

451

WELL NO.				DATES-FROM		TO							
Big Chief				1		July 14, 1985							
DATE 8 A.M.	CHART		PRESSURE		CHOKE	HEATER TEMP	SEPARATOR		STOCK TANK		LIQUID PRODUCTION	DATE SEALS ON	ESTIMATED MCF
	DIF	TUBING	CASING	PRESS.			TEMP	FT	IN.				
15	348	3.4	100		Full	90			0	10			.090
16	348	3.4	100		Full	94			0	10			.090
17	348	3.4	100		Full	90			0	10			.090
18	467	3.6	100		Full	100			0	10			.110
19	467	3.6	100		Full	98			0	10			.110
20	572	3.8	100		Full	90			0	10			.124
21	7.0	0	500		Full	90			0	10			0

1/2" 4548 REMARKS 7-21 Compressor was down.

SIGNATURE Charlie Williams

Kroff 143-1 BOX 800 TULSA OK 74101

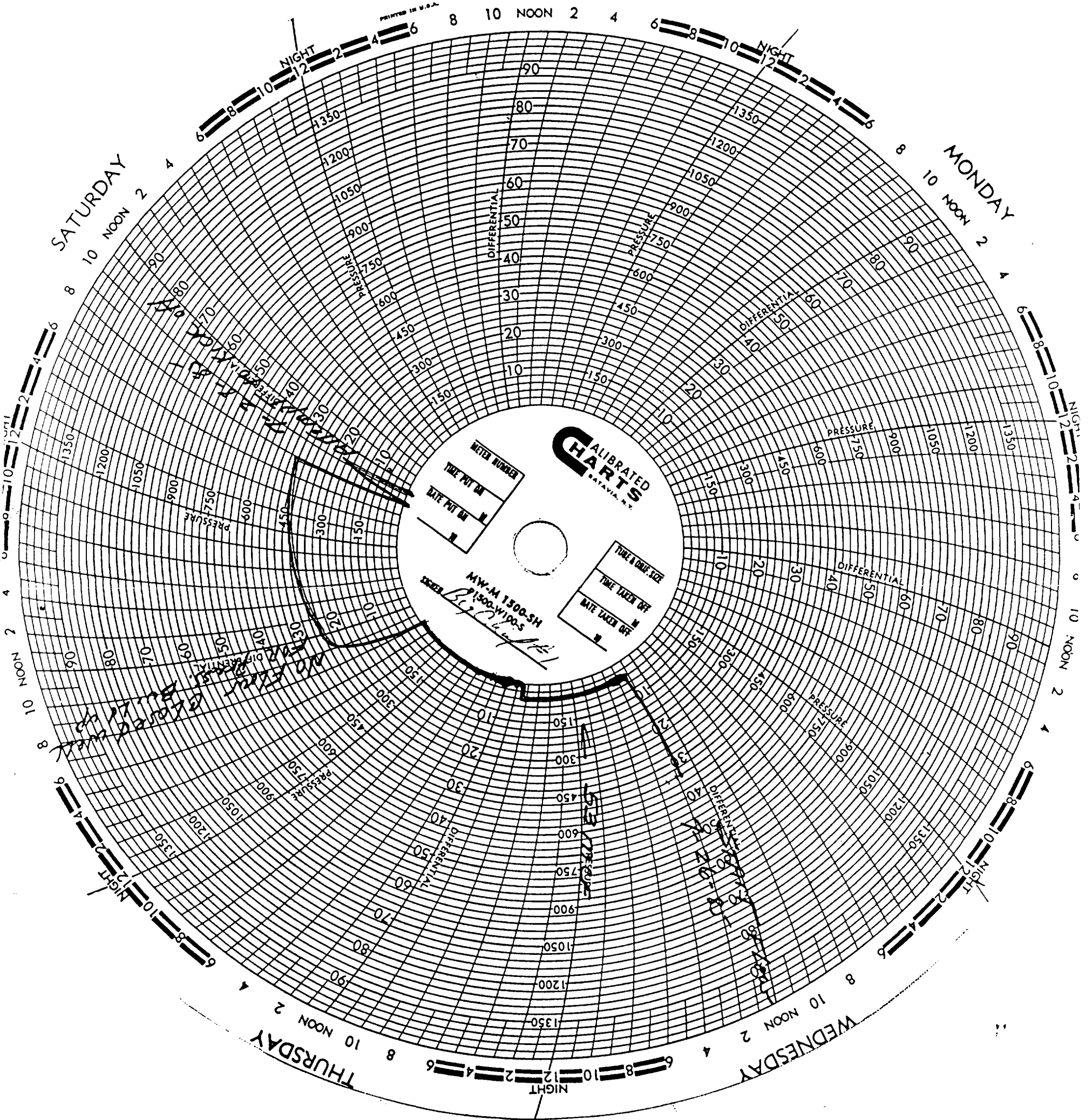
PRINTED IN U.S.A.

SUNDAY

PRINTED IN U.S.A.

SATURDAY

MONDAY



BIG CHIEF #2

EDDY COUNTY, NEW MEXICO

July 8, 1985

Production from Gauge Report--241 MCF.

July 9, 1985

Production from Gauge Report--277 MCF.

July 19, 1985

Closed in.

July 11, 1985

Blew well to atmosphere.

July 12, 1985

Production--688 MCF.

July 25, 1985

Start log<sup>g</sup> off test.

July 26, 1985

Flow on 14/64 choke, to sales line.

July 27, 1985

Flow to atmosphere-- 14/64 choke. Estimated production--222 MCF.

# GAS WELL REPORT

LEASE

WELL NO.

DATES FROM

TO

DATE  
8 A.M.

CHART

DIF.

TUBING

CASING

CHOKE

HEATER  
TEMP.

SEPARATOR  
PRESS.

TEMP.

STOCK TANK  
FT.

IN.

LIQUID  
PRODUCTION

DATE  
SEALS ON

ESTIMATED  
MCF

DATE  
8 A.M.

CHART

DIF.

TUBING

CASING

CHOKE

HEATER  
TEMP.

SEPARATOR  
PRESS.

TEMP.

STOCK TANK  
FT.

IN.

LIQUID  
PRODUCTION

DATE  
SEALS ON

ESTIMATED  
MCF

DATE  
8 A.M.

CHART

DIF.

TUBING

CASING

CHOKE

HEATER  
TEMP.

SEPARATOR  
PRESS.

TEMP.

STOCK TANK  
FT.

IN.

LIQUID  
PRODUCTION

DATE  
SEALS ON

ESTIMATED  
MCF

DATE  
8 A.M.

CHART

DIF.

TUBING

CASING

CHOKE

HEATER  
TEMP.

SEPARATOR  
PRESS.

TEMP.

STOCK TANK  
FT.

IN.

LIQUID  
PRODUCTION

DATE  
SEALS ON

ESTIMATED  
MCF

DATE  
8 A.M.

CHART

DIF.

TUBING

CASING

CHOKE

HEATER  
TEMP.

SEPARATOR  
PRESS.

TEMP.

STOCK TANK  
FT.

IN.

LIQUID  
PRODUCTION

DATE  
SEALS ON

ESTIMATED  
MCF

DATE  
8 A.M.

CHART

DIF.

TUBING

CASING

CHOKE

HEATER  
TEMP.

SEPARATOR  
PRESS.

TEMP.

STOCK TANK  
FT.

IN.

LIQUID  
PRODUCTION

DATE  
SEALS ON

ESTIMATED  
MCF

DATE  
8 A.M.

CHART

DIF.

TUBING

CASING

CHOKE

HEATER  
TEMP.

SEPARATOR  
PRESS.

TEMP.

STOCK TANK  
FT.

IN.

LIQUID  
PRODUCTION

DATE  
SEALS ON

ESTIMATED  
MCF

DATE  
8 A.M.

CHART

DIF.

TUBING

CASING

CHOKE

HEATER  
TEMP.

SEPARATOR  
PRESS.

TEMP.

STOCK TANK  
FT.

IN.

LIQUID  
PRODUCTION

DATE  
SEALS ON

ESTIMATED  
MCF

DATE  
8 A.M.

CHART

DIF.

TUBING

CASING

CHOKE

HEATER  
TEMP.

SEPARATOR  
PRESS.

TEMP.

STOCK TANK  
FT.

IN.

LIQUID  
PRODUCTION

DATE  
SEALS ON

ESTIMATED  
MCF

DATE  
8 A.M.

CHART

DIF.

TUBING

CASING

CHOKE

HEATER  
TEMP.

SEPARATOR  
PRESS.

TEMP.

STOCK TANK  
FT.

IN.

LIQUID  
PRODUCTION

DATE  
SEALS ON

ESTIMATED  
MCF

DATE  
8 A.M.

CHART

DIF.

TUBING

CASING

CHOKE

HEATER  
TEMP.

SEPARATOR  
PRESS.

TEMP.

STOCK TANK  
FT.

IN.

LIQUID  
PRODUCTION

DATE  
SEALS ON

ESTIMATED  
MCF

DATE  
8 A.M.

CHART

DIF.

TUBING

CASING

CHOKE

HEATER  
TEMP.

SEPARATOR  
PRESS.

TEMP.

STOCK TANK  
FT.

IN.

LIQUID  
PRODUCTION

DATE  
SEALS ON

ESTIMATED  
MCF

DATE  
8 A.M.

CHART

DIF.

TUBING

CASING

CHOKE

HEATER  
TEMP.

SEPARATOR  
PRESS.

TEMP.

STOCK TANK  
FT.

IN.

LIQUID  
PRODUCTION

DATE  
SEALS ON

ESTIMATED  
MCF

DATE  
8 A.M.

CHART

DIF.

TUBING

CASING

CHOKE

HEATER  
TEMP.

SEPARATOR  
PRESS.

TEMP.

STOCK TANK  
FT.

IN.

LIQUID  
PRODUCTION

DATE  
SEALS ON

ESTIMATED  
MCF

DATE  
8 A.M.

CHART

DIF.

TUBING

CASING

CHOKE

HEATER  
TEMP.

SEPARATOR  
PRESS.

TEMP.

STOCK TANK  
FT.

IN.

LIQUID  
PRODUCTION

DATE  
SEALS ON

ESTIMATED  
MCF

DATE  
8 A.M.

CHART

DIF.

TUBING

CASING

CHOKE

HEATER  
TEMP.

SEPARATOR  
PRESS.

## AS WELL REPORT

WELL NO.				DATES-FROM		TO						
Big Chief				2		July 7 1985 July 14 1985						
DATE 8 A.M.	CHART	PRESSURE		CHOKE	HEATER TEMP.	SEPARATOR		STOCK TANK		LIQUID PRODUCTION	GATE SEALS ON	ESTIMATED MCF
		DIF	TUBING			CASING	PRESS.	TEMP.	FT.			
8	530	2.2	550	18 64	86			8	2			.241
9	432	2.8	500	18 64	85			8	2			.277
10	—	—	—	—	—			8	2			0
11	348	—	1200	18 64	—			8	2			0
12	338	7.8	400	18 64	86			8	2			.688
13	337	7.8	400	18 64	90			8	2			.676
14	337	7.3	350	18 64	84			8	2			.632

- Conf. 15. 1972  
 7-9 Blew well for test.  
 7-10 Shut in well.  
 7-11 Put well on line.

SIGNATURE

Charlie Williams

143-1 BOX 400 TULSA OK 74101

PRINTED IN U.S.A.

## AS WELL REPORT

WELL NO.		DATES--FROM		TO								
2		July 14, 1985		July 21, 1985								
DATE 8 A.M.	CHART	PRESSURE		CHOKE	HEATER TEMP.	SEPARATOR		STOCK TANK		LIQUID PRODUCTION	GATE SEALS ON	ESTIMATED MCF
		DIF.	TUBING			CASING	PRESS.	TEMP.	FT.			
15	348	6.8	350		86			8	2			.599
16	348	7.0	350		84			8	2			.617
17	348	7.0	350		85			8	2			.617
18	421	0	280		90			8	2			0
19	421	0	160		94			8	2			0
20	539	0	100		88			8	2			0
21	542	5.0	500		90			8	2			.532

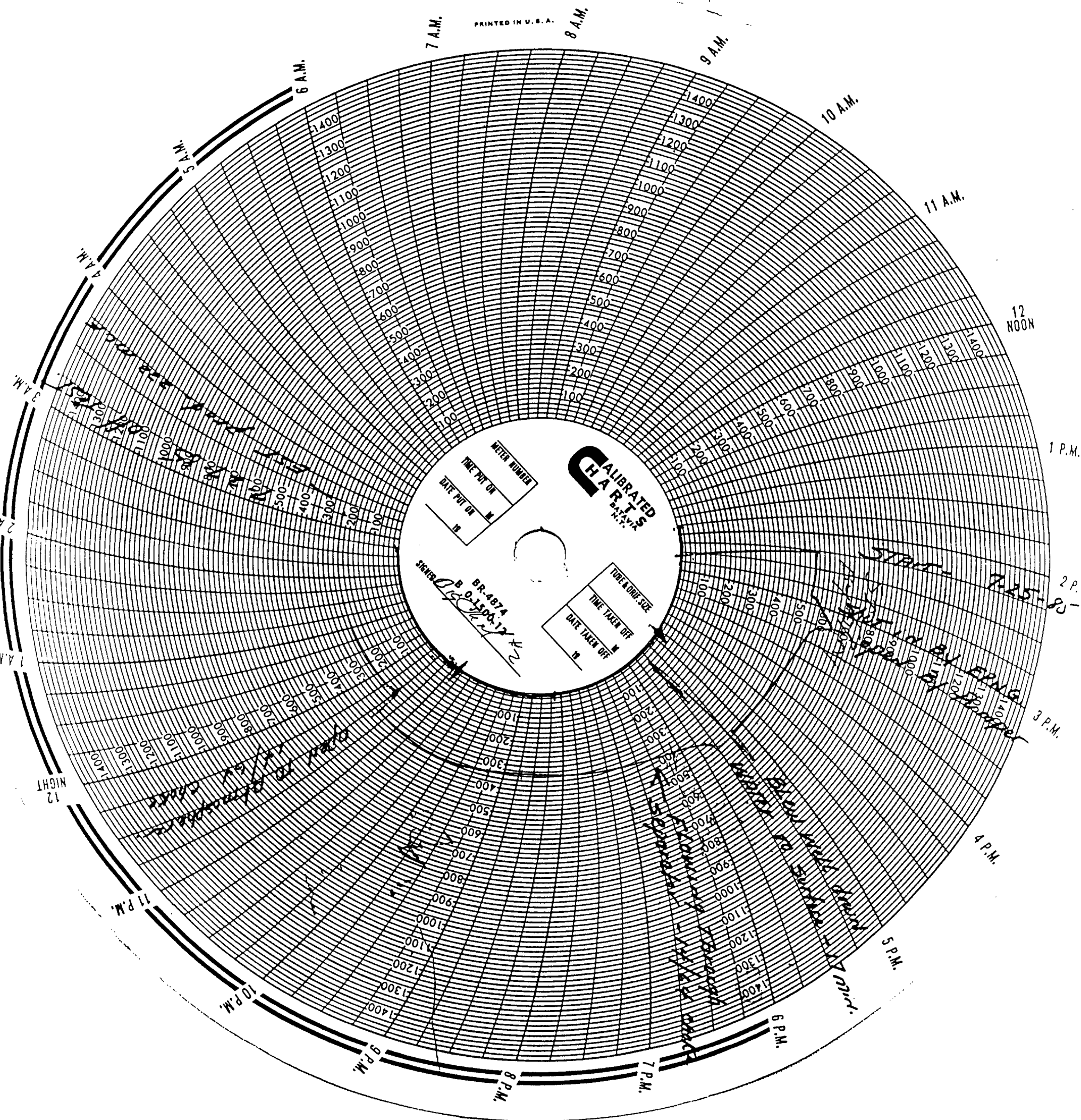
Conf. 15. 1972

SIGNATURE

Charlie Williams

143-1 BOX 400 TULSA OK 74101

PRINTED IN U.S.A.



2275

BIG CHIEF #4

EDDY COUNTY, NEW MEXICO

July 24, 1985

Shut compressor down and open well to atmosphere- 14/64 choke. Estimated on production--60 MCF.

July 25, 1985

Flow to atmosphere- 14/64 choke. Estimated production--60 MCF.

July 26, 1985

Flow to atmosphere- 14/64 choke. Estimated production--32 MCF.

Compressor Rental - 1567.00  
COST TO RUN 12.5 MCF = 40.38  
Pumper - 296.68

## GAS WELL REPORT

GAS WELL REPORT				WELL NO.		DATES--FROM		TO					
Big Chief				4		July 21, 1985		July 28, 1985					
DATE B A M	CHART		PRESSURE		CHOKE	HEATER TEMP.	SEPARATOR		STOCK TANK		LIQUID PRODUCTION	DATE SEALS ON	ESTIMATED MCF
	ST	DIF.	TUBING	CASING			PRESS.	TEMP.	FT.	IN.			
22	5:45	2.6	100		Full	90			5	6			.089
23	5:45	0	300		Full	94			5	6			0
24	—	—	100		Full	—			5	6			0
25	—	—	80	14/64	Full	—			5	6			0
26	—	—	40	14/64	Full	—			5	6			0
27	—	—	40	14/64	Full	—			5	6			0
28	5:03	3.2	100		Full	90			5	6			.102

1/2" 4548 REMARKS 7:23 Shut well in for test; flaring well.  
 7:25 Koloruti 7:24 flaring well.  
 0-2 oil 7:25 to 7:27 testing well.  
 5-4 water 7:27 Put well on line; started compressor.

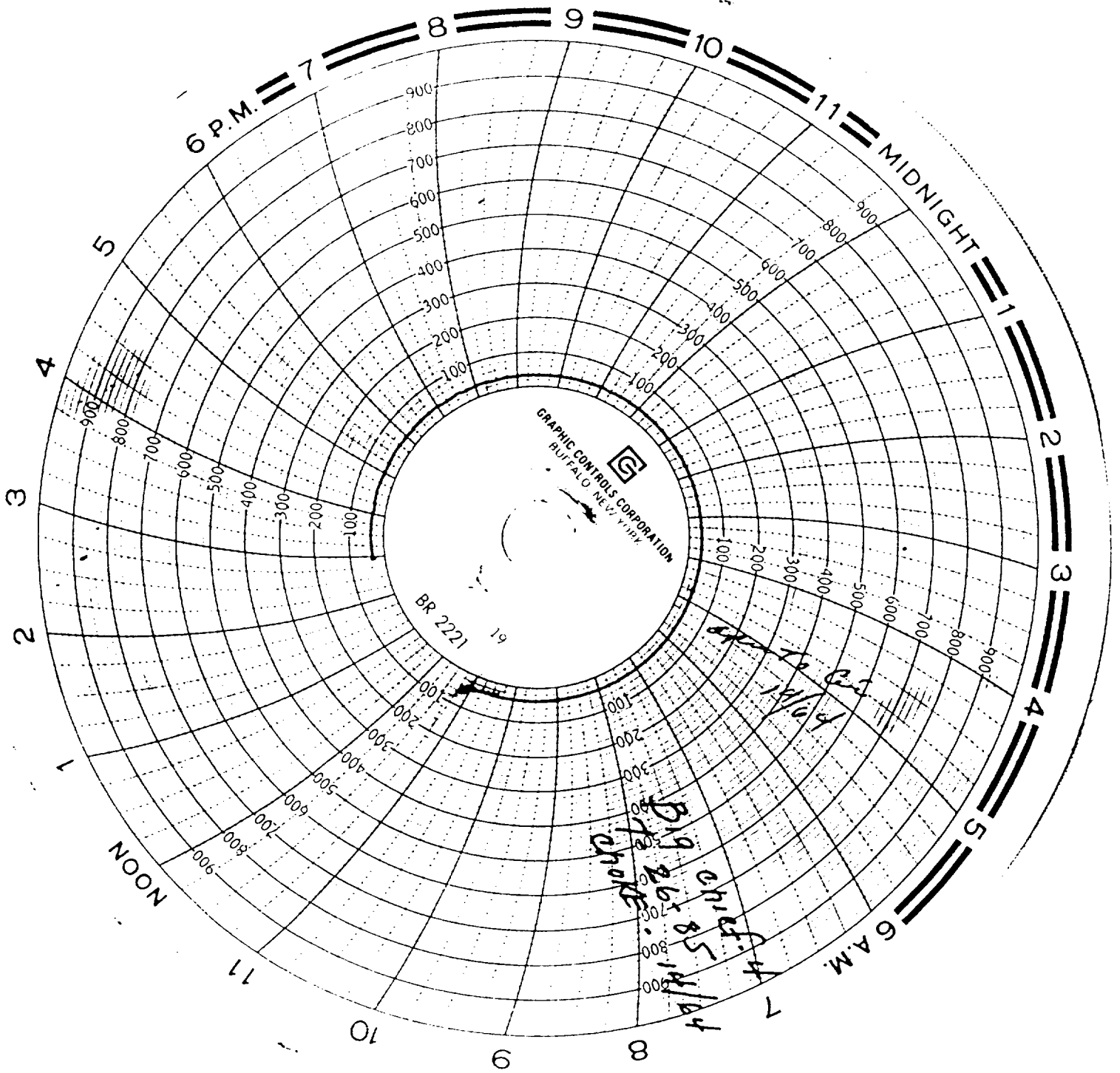
SIGNATURE Charlie Williams  
 PRINTED IN U.S.A.

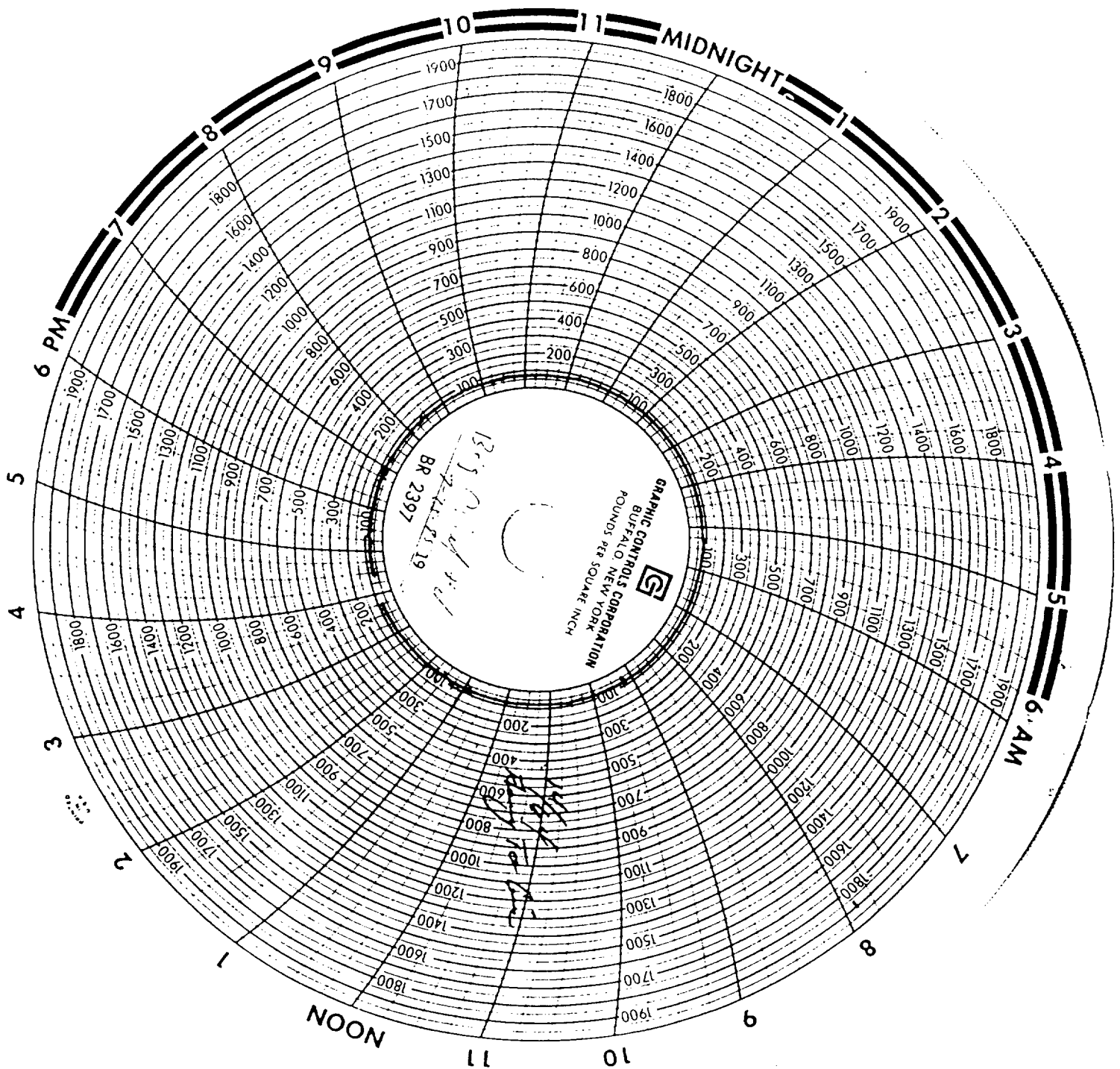
## GAS WELL REPORT

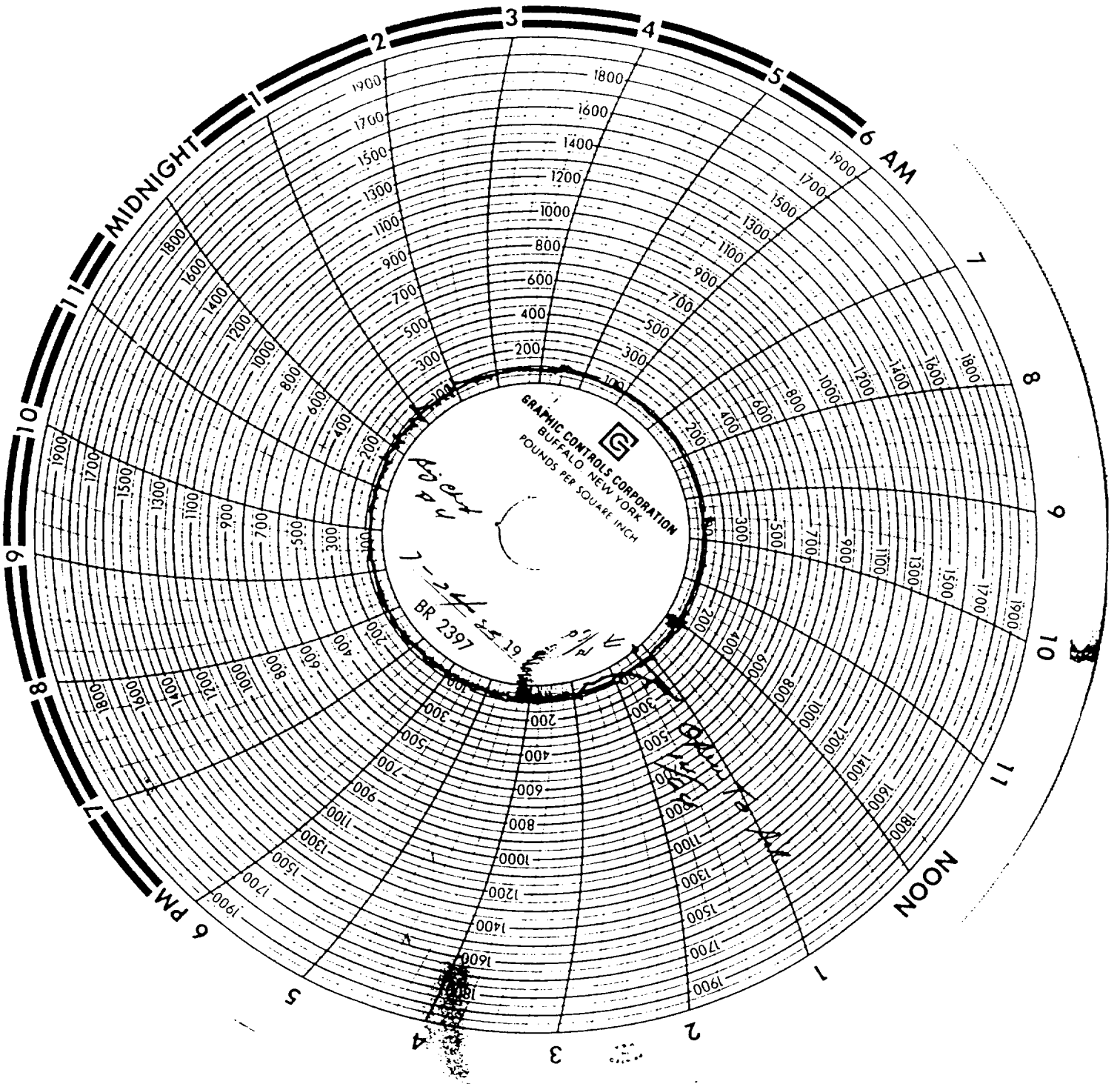
WELL NO.				DATES--FROM		TO							
Big Chief				4		July 14, 1985		July 21, 1985					
DATE B A M	CHART		PRESSURE		CHOKE	HEATER TEMP.	SEPARATOR		STOCK TANK		LIQUID PRODUCTION	DATE SEALS ON	ESTIMATED MCF
	DIF.		TUBING	CASING			PRESS.	TEMP.	FT.	IN.			
15	3:48	5.8	3.0	100	Full	90			5	6			.079
16	3:48	5.8	3.0	100	Full	96			5	6			.079
17	3:48	5.8	3.0	100	Full	96			5	6			.079
18	4:17	6.7	3.0	100	Full	98			5	6			.091
19	4:21	6.7	2.8	100	Full	96			5	6			.085
20	5:30	7.2	3.0	100	Full	90			5	6			.098
21	5:38	7.0	2.8	100	Full	90			5	6			.089

1/2" 4548 REMARKS

SIGNATURE Charlie Williams  
 PRINTED IN U.S.A.







LITTLE SQUAW #1

July 11, 1985

12/64 put on line, came down to line pressure.

July 12, 1985

Two (2) hours on line pressure, changed chart.

July 13, 1985

Going through separator, line pressure from 2 p.m. to 3 p.m., may have produced some gas.

July 14, 1985

Still through separator, riding line pressure.

July 23, 1985

Open to air 12/64 choke.

July 25, 1985

Flow to burn pit, 12/64 choke, estimated production 400 MCF.

July 26, 1985

12/64 choke, estimated production 336 MCF.

## GAS WELL REPORT

WELL NO.				DATES-FROM		TO									
Little Squaw				July 7, 1985		July 14, 1985									
DATE B A M	CHART	PRESSURE		CHOKE	HEATER TEMP.	SEPARATOR		STOCK TANK		LIQUID PRODUCTION	DATE SEALS ON	ESTIMATED MCF			
		DIF.	TUBING			CASING	PRESS.	TEMP.	FT				IN.		
8	545	4.0	550		80			2	3			.138			
9	545	4.8	550		78			2	3			.150			
10	—	—	—		—			2	3			0			
11	348	—	1050		—			2	3			0			
12	348	8.2	400		84			2	3			.228			
13	337	8.0	400		90			2	3			.219			
14	337	7.8	350		90			2	3			.213			

COEF. 4.8

REMARKS 7-9 Blew well for test.  
7-10 Shut in well.  
7-11 Put well on line.

SIGNATURE Charlie Williams

Hess 143-1 80A 400

PRINTED IN U.S.A.

## GAS WELL REPORT

WELL NO.				DATES-FROM		TO									
Little Squaw				July 21, 1985		July 28, 1985									
DATE B A M	CHART	PRESSURE		CHOKE	HEATER TEMP.	SEPARATOR		STOCK TANK		LIQUID PRODUCTION	DATE SEALS ON	ESTIMATED MCF			
		DIF.	TUBING			CASING	PRESS.	TEMP.	FT				IN.		
22	545	3.4	580		84			2	9			.122			
23	545	3.4	600		78			3	0			.119			
24	312	6.8	400		84			3	3			.196			
25	312	0	500		85			3	6			0			
26	—	—	420		—			3	6			0			
27	—	—	420		—			3	6			0			
28	502	0	1000		85			3	6			0			

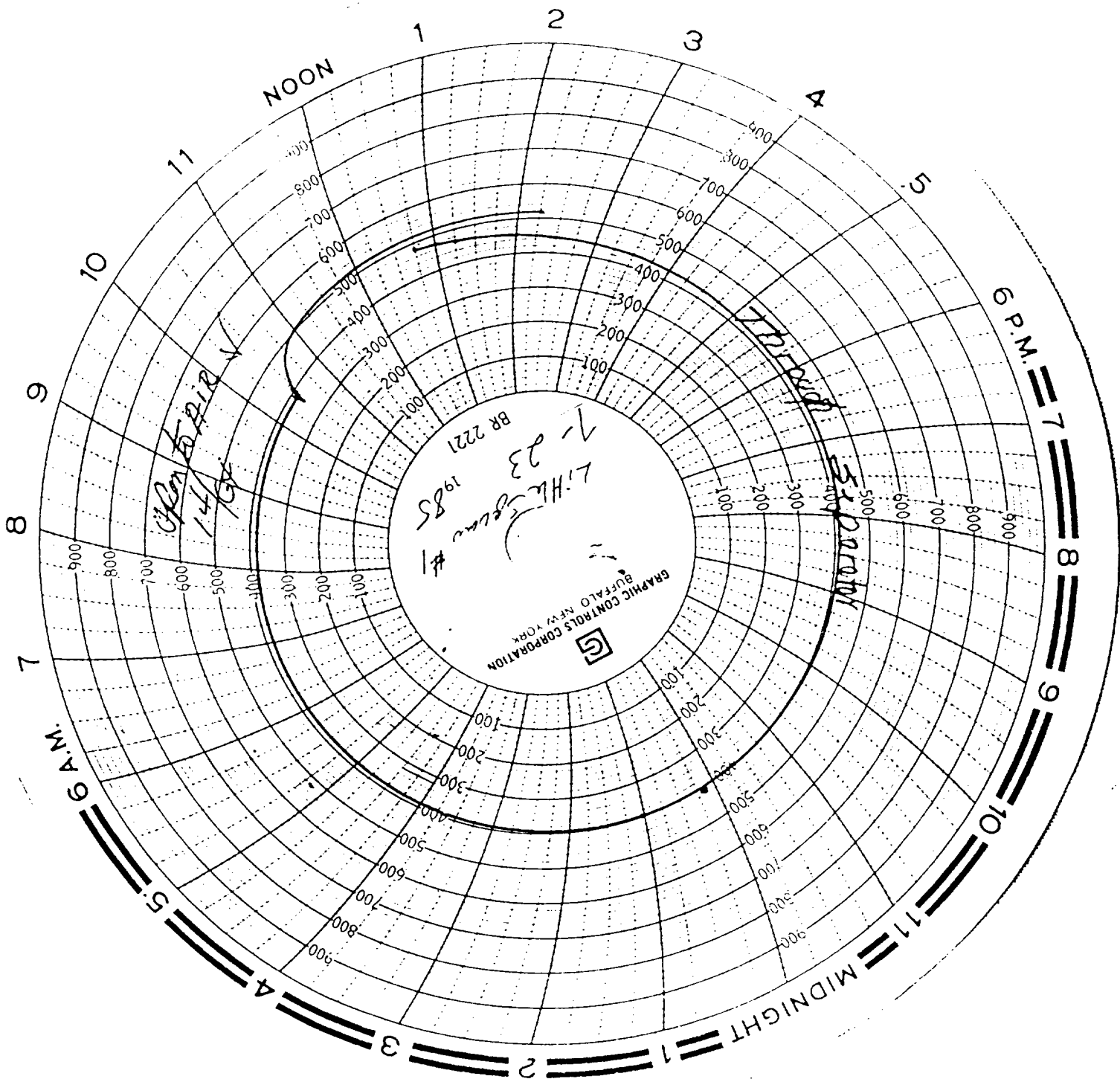
COEF. 4.8

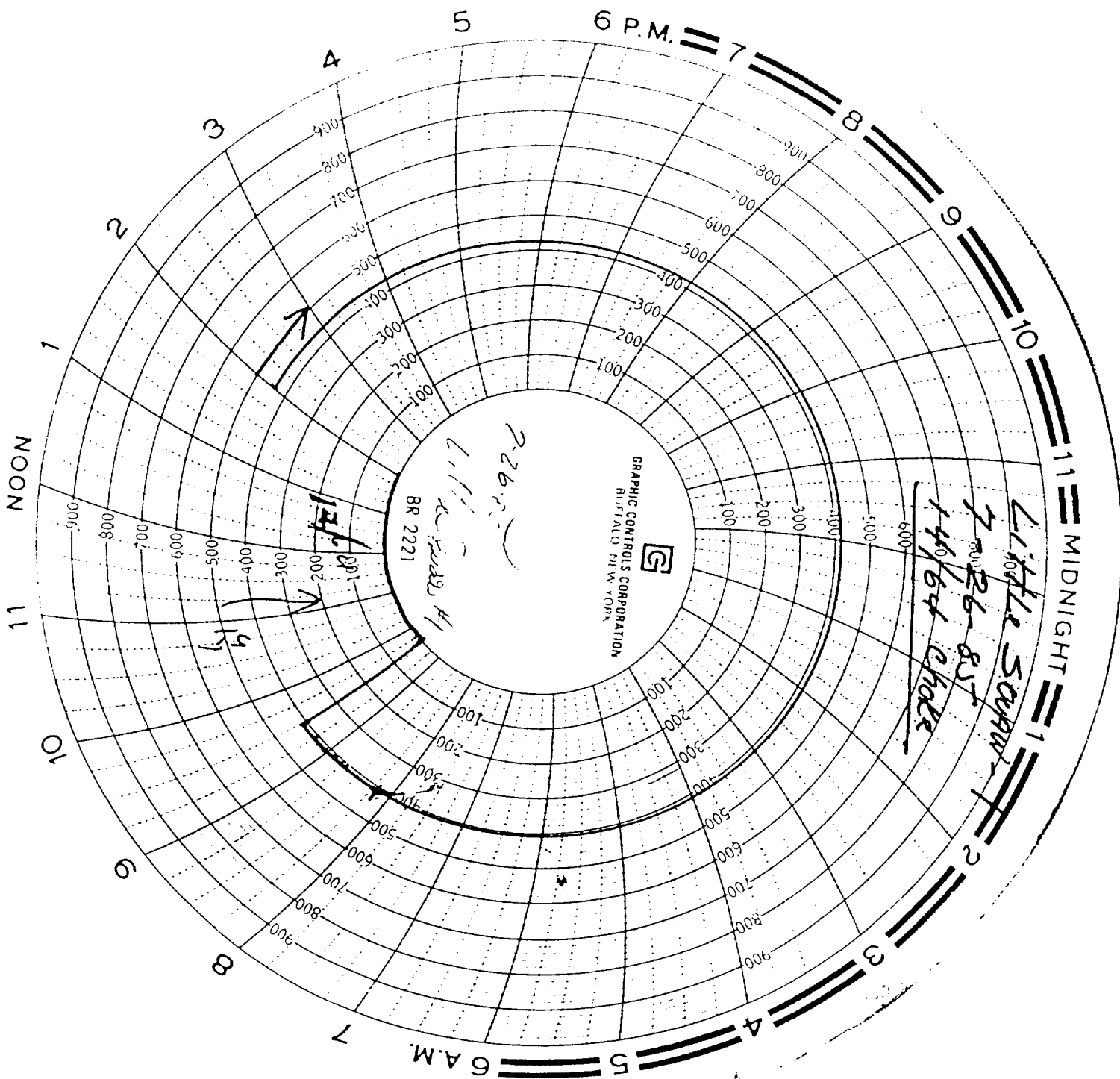
REMARKS 7-25 Flaring well.  
7-25 Kolor Kut.  
0-5 oil  
3-1 water  
7-26 + 27 Testing.  
7-28 Put well on line.

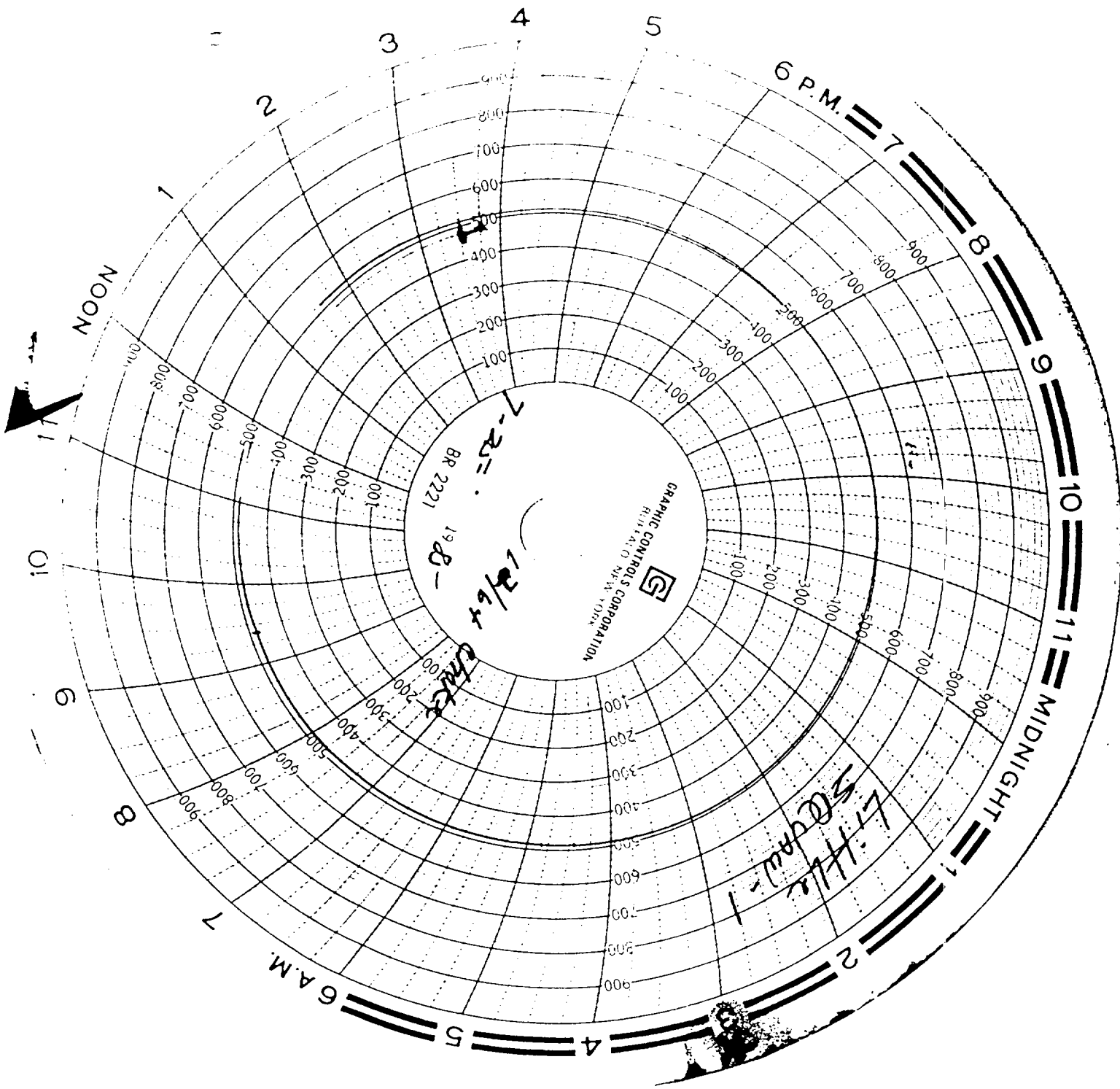
SIGNATURE Charlie Williams

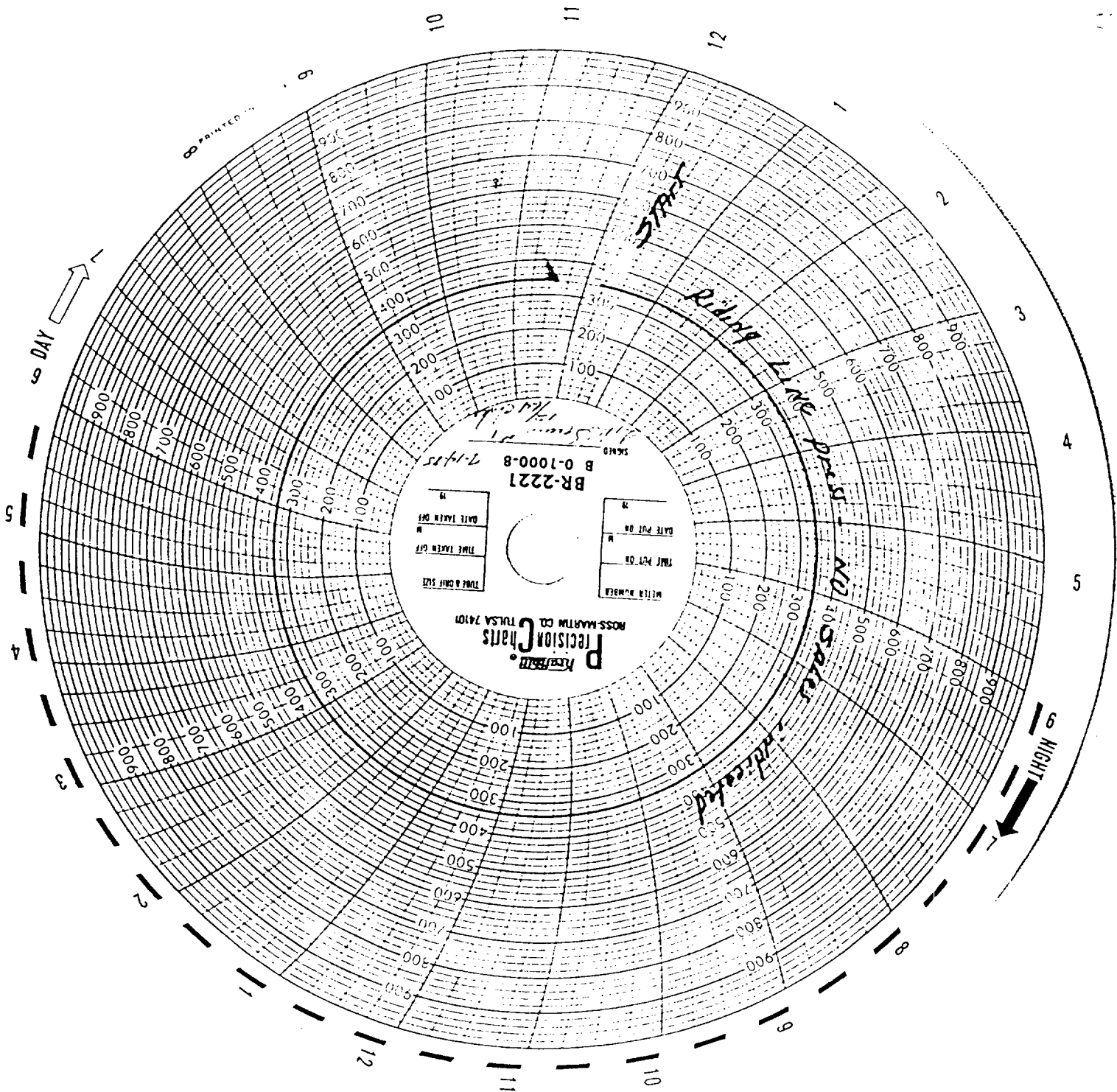
Hess 143-1 80A 400

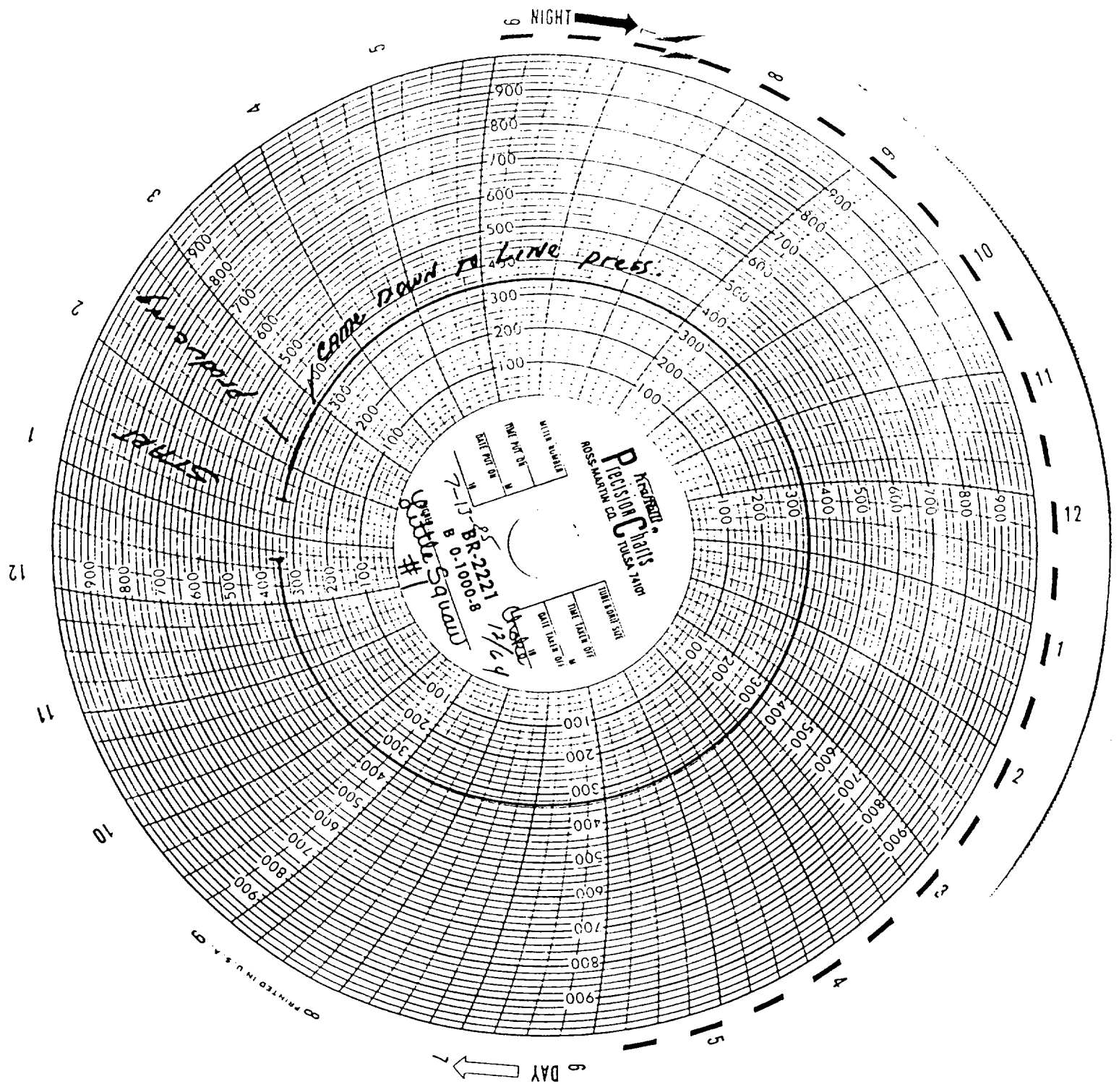
PRINTED IN U.S.A.



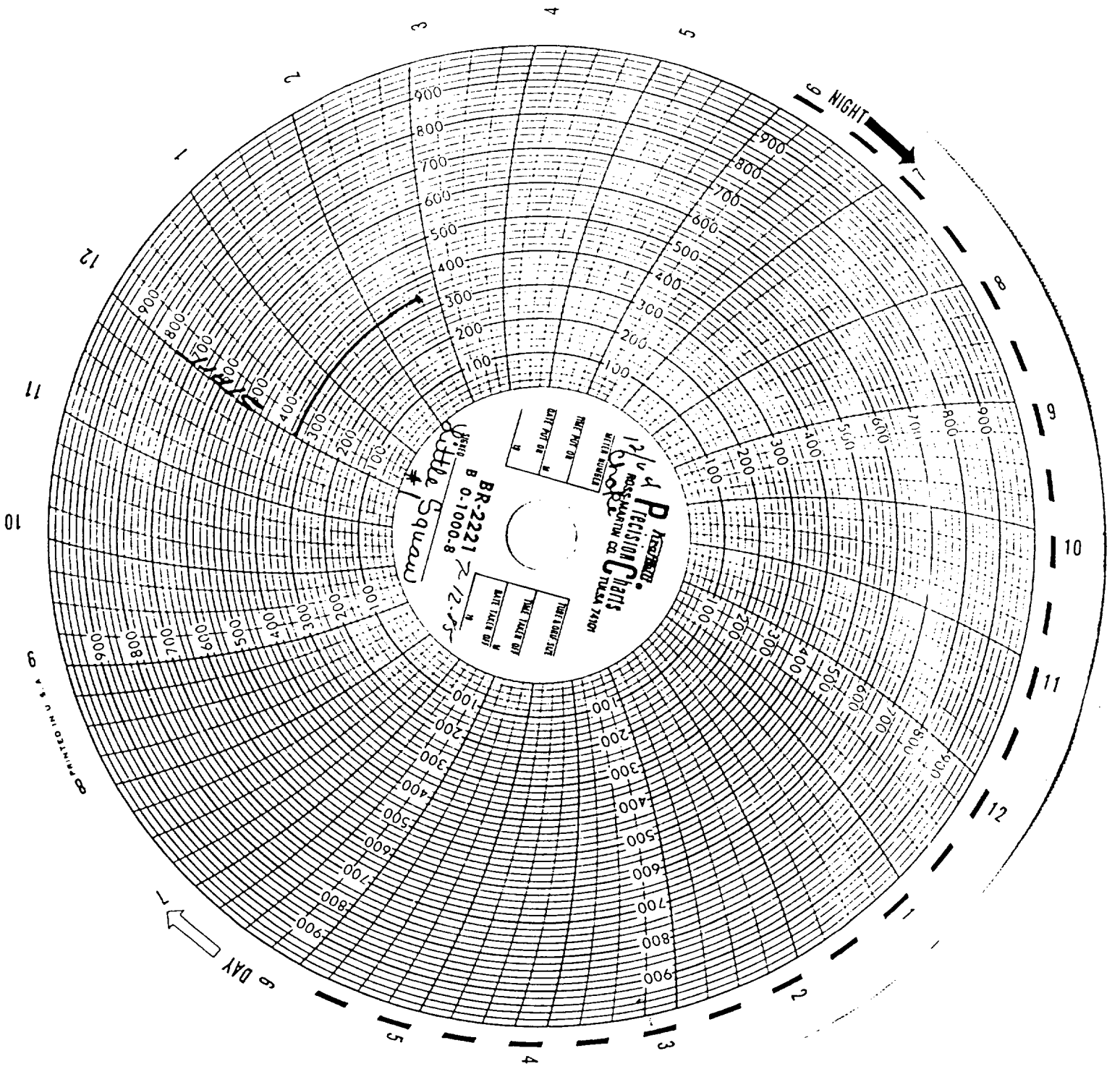








PRINTED IN U.S.A.



P Precision Charts  
B-2221  
B 0-1000-8  
Little Squaw

TIME NOT ON  
TIME TAKEN ON  
TIME NOT OFF  
TIME TAKEN OFF

