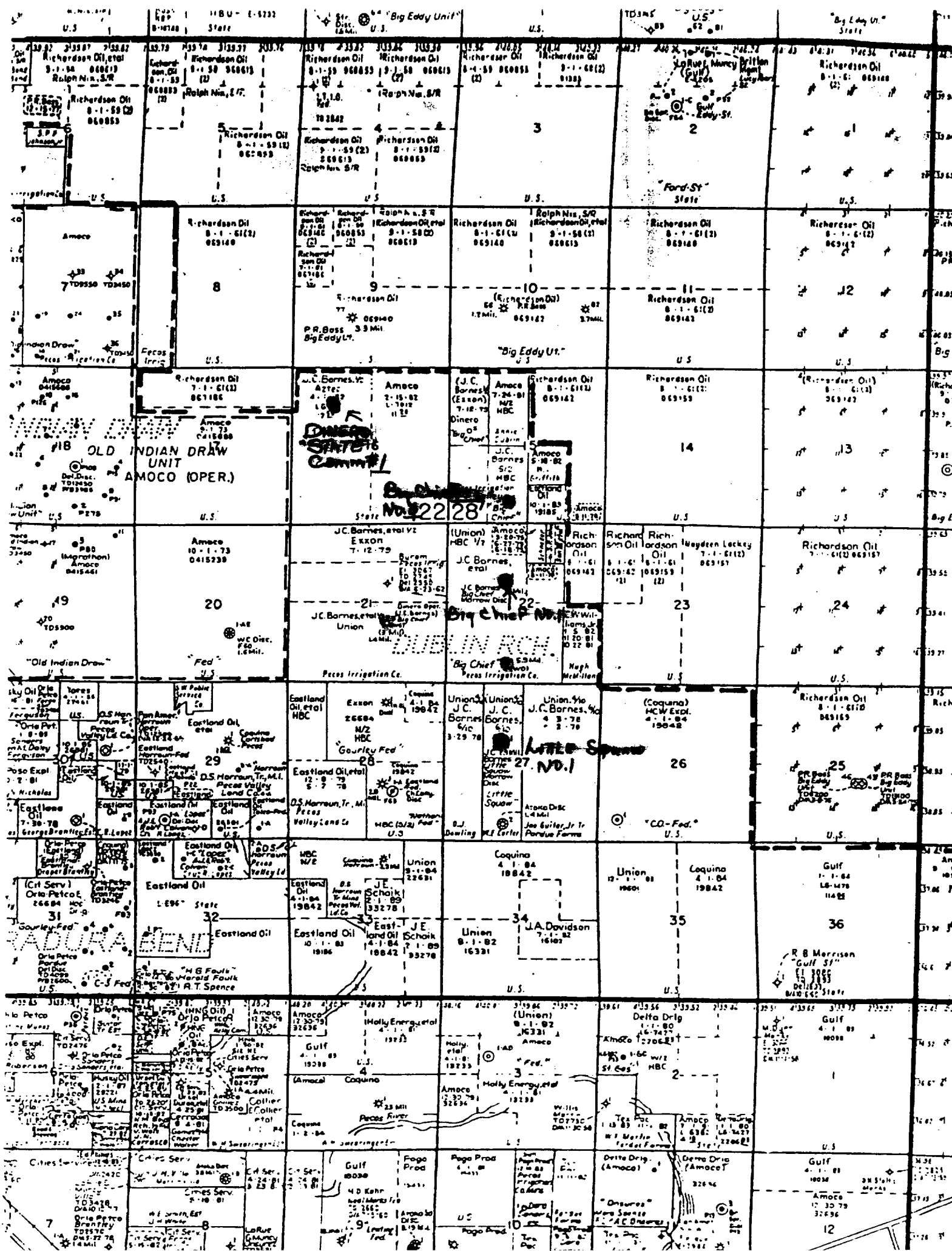


DOC# 2584
EXHIBIT # 2
CASE# 8218,19,20,21



**NEW MEXICO OIL CONSERVATION COMMISSION
WELL LOCATION AND ACREAGE DEDICATION PLAT**

Form C-102
Supersedes C-128
Effective 1-4-85

All distances must be from the outer boundaries of the Section.

Lessee J. C. Barnes Oil Company			Lease Big Chief Comm.		Well No. One
Well Letter F	Section 22	Township 22-S	Range 28-E	County Eddy County, New Mexico	

Actual Footage Location of Wells:

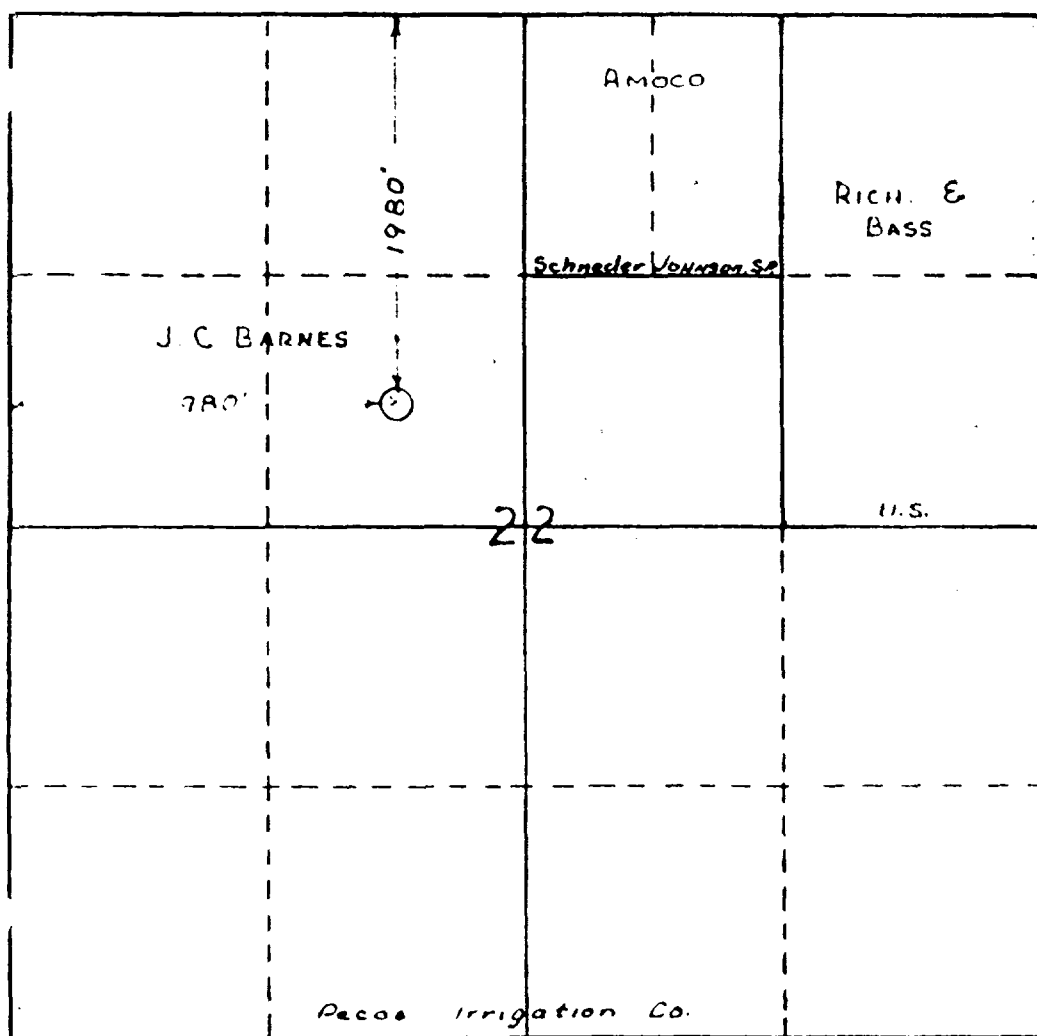
1980	feet from the North	line and 1980	feet from the West	line
Ground Level Elev. 3095'	Producing Formation Morrow	Pool Undesignated	Dedicated Acreage 320 Acres	

1. Outline the acreage dedicated to the subject well by colored pencil or hatchure marks on the plat below.
2. If more than one lease is dedicated to the well, outline each and identify the ownership thereof (both as to working interest and royalty).
3. If more than one lease of different ownership is dedicated to the well, have the interests of all owners been consolidated by communitization, unitization, force-pooling, etc?

☒ Yes ☐ No If answer is "yes," type of consolidation Communitization

If answer is "no," list the owners and tract descriptions which have actually been consolidated. (Use reverse side of this form if necessary.) _____

No allowable will be assigned to the well until all interests have been consolidated (by communitization, unitization, forced-pooling, or otherwise) or until a non-standard unit, eliminating such interests, has been approved by the Commission.



CERTIFICATION

I hereby certify that the information contained herein is true and complete to the best of my knowledge and belief.

Name
Russell Remond

Position
President

Company
J. C. Barnes Oil Company

Date
January 24, 1979

I hereby certify that the well location shown on this plat was plotted from field notes of actual surveys made by me or under my supervision, and that the same is true and correct to the best of my knowledge and belief.

March 9, 1978

Date Surveyed
Orig. signed by-W. D. Watson,

Registered Professional Engineer
and/or Land Surveyor

3959

Certificate No.

350 650 950 1250 1550 1850 2150 2450 2750 3050 3350 3650 3950 4250 4550 4850 5150 5450 5750 6050 6350 6650 6950 7250 7550 7850 8150 8450 8750 9050 9350 9650 9950 0

**NEW MEXICO OIL CONSERVATION COMMISSION
WELL LOCATION AND ACREAGE DEDICATION PLAT**

Form C-102
Supersedes C-128
Effective 1-1-65

All distances must be from the outer boundaries of the Section.

J. C. Barnes Oil Company			Lease # Big Chief		Well No. 4
Unit Letter N	Section 15	Township 22S	Range 28E	County Eddy	
Actual Footage Location of Well: 1980 feet from the West line and 660 feet from the South line					
Ground Level Elev. 3101	Producing Formation Morrow		Pool Dublin Ranch		Dedicated Acreages 320 Acres

1. Outline the acreage dedicated to the subject well by colored pencil or hatchure marks on the plat below.
2. If more than one lease is dedicated to the well, outline each and identify the ownership thereof (both as to working interest and royalty).
3. If more than one lease of different ownership is dedicated to the well, have the interests of all owners been consolidated by communitization, unitization, force-pooling, etc?

☒ Yes ☐ No If answer is "yes," type of consolidation Comm.

If answer is "no," list the owners and tract descriptions which have actually been consolidated. (Use reverse side of this form if necessary.) _____

No allowable will be assigned to the well until all interests have been consolidated (by communitization, unitization, forced-pooling, or otherwise) or until a non-standard unit, eliminating such interests, has been approved by the Commission.

EXXON	AMOCO	RICHARDSON	BASS
J22S		R28E	
FEDERAL O. & G.			
EXXON	PECOS IRRIGATION	AMOCO	RICHARDSON-BASS
OPERATOR: J. C. BARNES OIL COMPANY		GRIFFETH	
PECOS IRRIGATION		EASTLAND OIL CO.	
1980'		660'	
Q#4		FEDERAL	
H! GRANDI			

CERTIFICATION

I hereby certify that the information contained herein is true and complete to the best of my knowledge and belief.

J. C. Barnes
Name _____
Field Supt.

Position
J. C. BARNES OIL COMPANY

Company
May 25, 1979

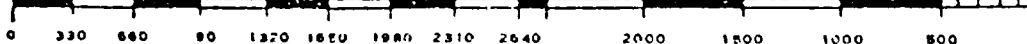
Date

I hereby certify that the information shown on this plat was prepared by field notes and surveys made by me or under my supervision, and that the same is true and correct to the best of my knowledge and belief.

W. D. Watson, Jr.
Date Surveyed
May 11, 1979

W. D. Watson, Jr.
Registered Professional Engineer
and/or Land Surveyor

W. D. Watson, Jr.
Certificate No. **3959**



**NEW MEXICO OIL CONSERVATION COMMISSION
WELL LOCATION AND ACREAGE DEDICATION PLAT**

Form C-102
Supersedes C-128
Effective 1-1-65

All distances must be from the outer boundaries of the Section.

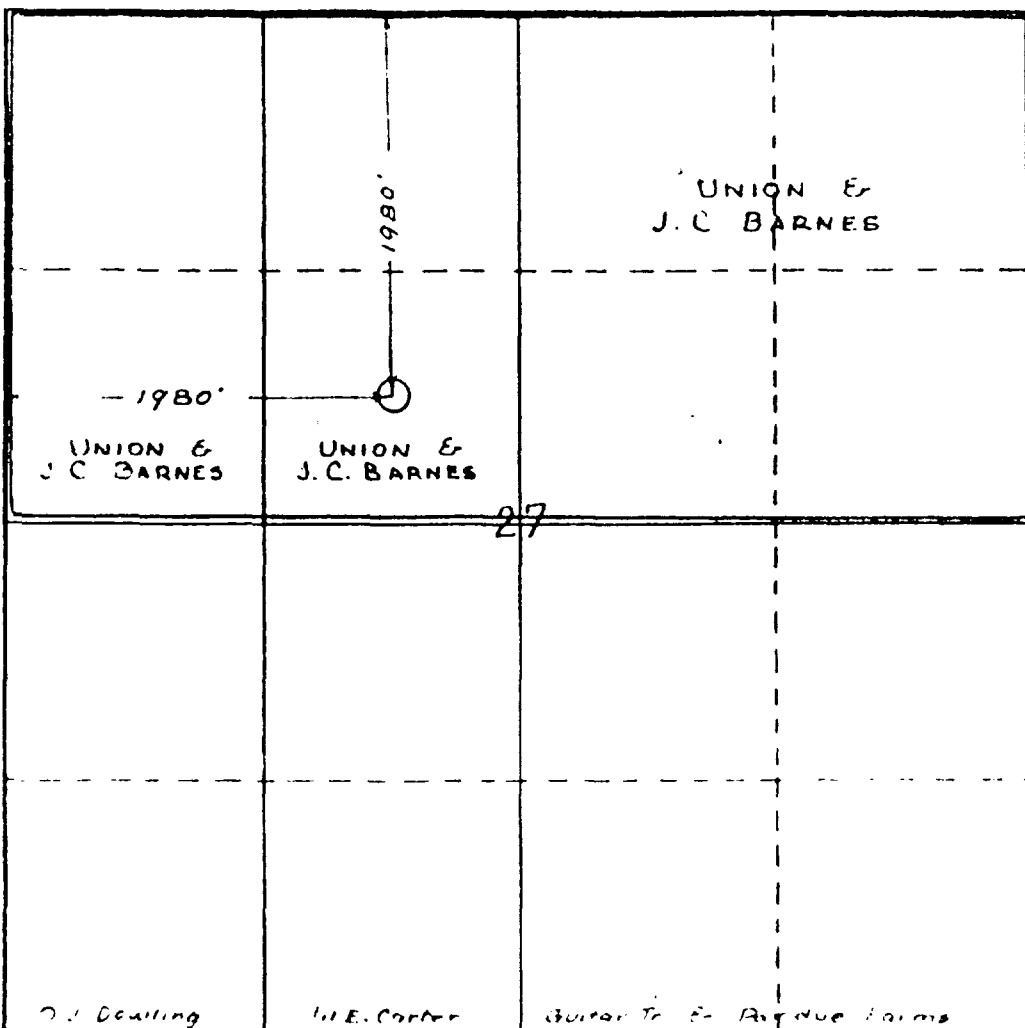
Operator J. C. Barnes Oil Company			Location Little Squaw Comm.		Well No. One
First Letter F	Section 27	Township 22-S	Range 28-E	County Eddy County, New Mexico	
Actual Footage Location of Well: <div style="display: flex; justify-content: space-between;"> 1980 feet from the West line and 1980 feet from the North line </div>					
Ground Level Elev. 3074'	Producing Formation Morrow	Pool Undesignated		Dedicated Acreage: 320 Acres	

1. Outline the acreage dedicated to the subject well by colored pencil or hachure marks on the plat below.
2. If more than one lease is dedicated to the well, outline each and identify the ownership thereof (both as to working interest and royalty).
3. If more than one lease of different ownership is dedicated to the well, have the interests of all owners been consolidated by communitization, unitization, force-pooling, etc?

☒ Yes ☐ No If answer is "yes," type of consolidation Communitization

If answer is "no," list the owners and tract descriptions which have actually been consolidated. (Use reverse side of this form if necessary.) _____

No allowable will be assigned to the well until all interests have been consolidated (by communitization, unitization, forced-pooling, or otherwise) or until a non-standard unit, eliminating such interests, has been approved by the Commission.



CERTIFICATION

I hereby certify that the information contained herein is true and complete to the best of my knowledge and belief.

Russell J. Hamel
Name
President
J. C. Barnes Oil Company
Company
January 24, 1979
Date

I hereby certify that the well location shown on this plat was plotted from field notes of actual surveys made by me or under my supervision, and that the same is true and correct to the best of my knowledge and belief.

March 9, 1978

Date Surveyed
Orig. signed by W. D. Watson
Registered Professional Engineer
and/or Land Surveyor

3959

Certificate No.

NEW MEXICO OIL CONSERVATION COMMISSION
WELL LOCATION AND ACREAGE DEDICATION PLAT

Form C-102
Superseded C-128
Effective 1-1-65

All distances must be from the outer boundaries of the Section

Operator Dinero Operating Co.		Lease Dinero State Comm.		Well No. 1
Section Letter C	Section 16	Township 22 South	Range 28 East	County Eddy
Actual Footage Location of Well: 660 feet from the north line and 1980 feet from the west line				
Land Level Elev. 3082.6	Producing Formation Morrow	Pool Wyo. Dublin Ranch Morrow	Dedicated Acreage: 320	

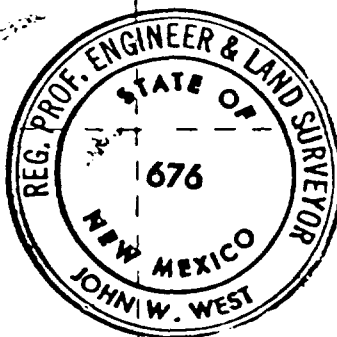
1. Outline the acreage dedicated to the subject well by colored pencil or hatchure marks on the plat below.
2. If more than one lease is dedicated to the well, outline each and identify the ownership thereof (both as to working interest and royalty).
3. If more than one lease of different ownership is dedicated to the well, have the interests of all owners been consolidated by communitization, unitization, force-pooling, etc?

☒ Yes ☐ No If answer is "yes," type of consolidation Communitization

If answer is "no," list the owners and tract descriptions which have actually been consolidated (Use reverse side of this form if necessary.)

No allowable will be assigned to the well until all interests have been consolidated (by communitization, unitization, forced-pooling, or otherwise) or until a non-standard unit, eliminating such interests, has been approved by the Commission.

DINERO OPERATING COMPANY	
DINERO STATE COMM. NO. 1	
Southland Royalty 160 acres-50% W.I. in dedicated acreage LG-0018	Amoco 160 acres-50% W.I. in dedicated acreage L-7012
DINERO OPERATING COMPANY	
STATE	



CERTIFICATION

I hereby certify that the information contained herein is true and complete to the best of my knowledge and belief

L. C. McClure

L. C. MCCLURE

FIELD SUPT.

DINERO OPERATING COMPANY

June 15, 1981

I hereby certify that the well location shown on this plat was plotted from field notes of actual surveys made by me or under my supervision, and that the same is true and correct to the best of my knowledge and belief

June 5 & 6, 1981

Registered Professional Engineer and Land Surveyor

John W. West

Certificate No. JOHN W. WEST 676