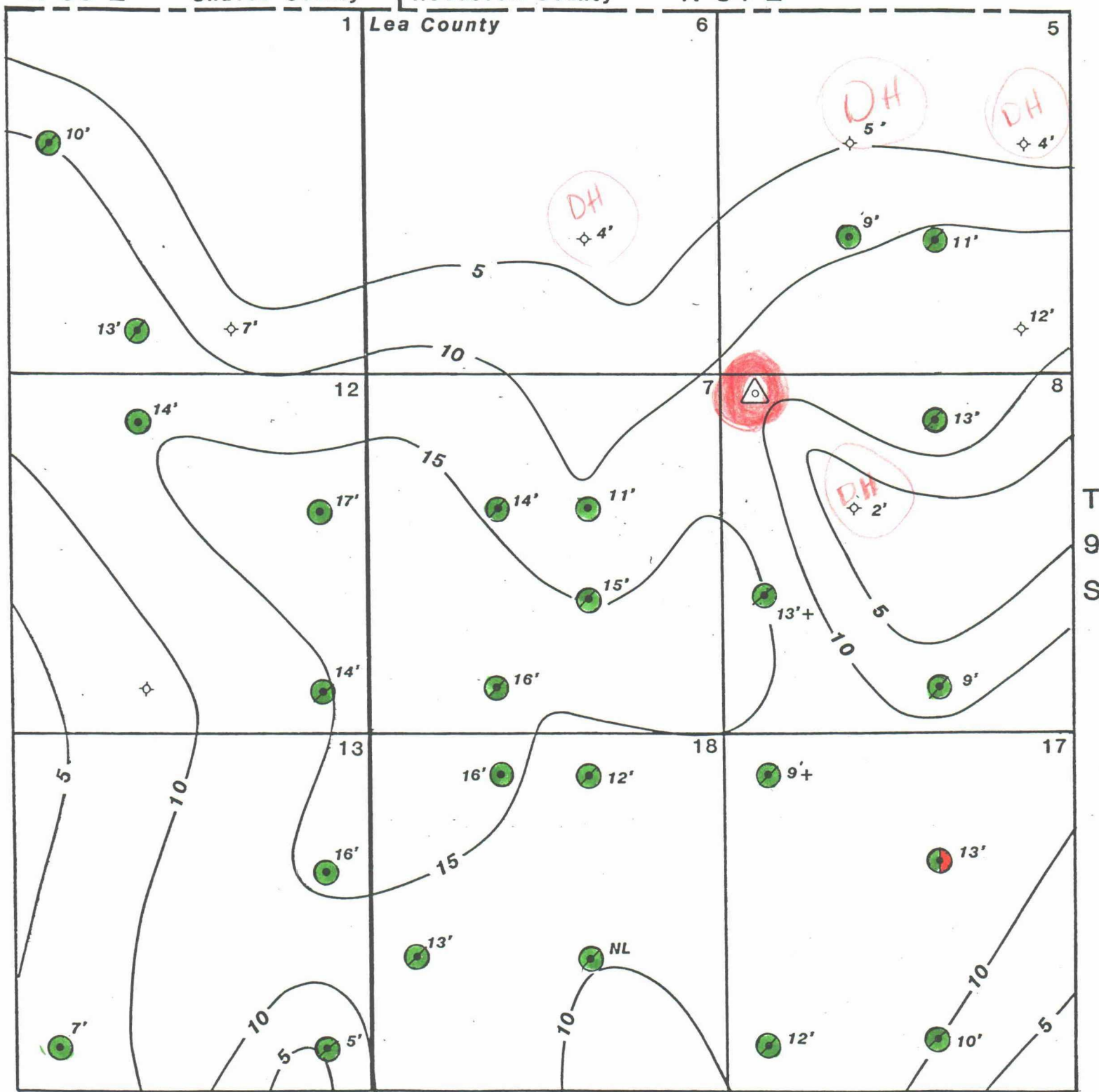


R 34 E



Proposed Location



Abo Production



Penn Bough 'C' Production

NL

No Porosity Log



SAMSON RESOURCES COMPANY

SAMSON PLAZA
TWO WEST SECOND STREET
TULSA, OKLAHOMA 74103

VADA PROSPECT

Lea County, New Mexico

ISOPACH MAP
PENN BOUGH "C" LIMESTONE
POROSITY ($\phi \geq 4\%$) CI = 5'

Date	10/84	Scale	1" = 2000'	Drawn by	JC
------	-------	-------	------------	----------	----