

Santa Fe Energy Operating Partners, L.P.

Santa Fe Pacific Exploration Company
Managing General Partner

November 7, 1986

Case 9047

Technical Support Chief
Oil Conservation Division
Energy and Minerals Department
State of New Mexico
P. O. Box 2088
Santa Fe, New Mexico 87501

Re: Chase State 2 No. 1
Sec. 2-22S-27E
Eddy County, New Mexico

Dear Sir:

Santa Fe Energy Operating Company, L.P. is requesting administrative approval for an unorthodox location due to geologic reasons.

Please find enclosed seven (7) copies of the following:

1. Letter requesting administrative approval of unorthodox location
2. Plat showing acreage dedicated
3. Geologic exhibits
4. Form C-101
5. Form C-102
6. Waiver letter to offset operators

Six (6) copies of the above have been sent to the District Office in Artesia.

Sincerely,

Billie Hood

Billie Hood
Senior Production Clerk

BH/dw

Enclosures

dz-186

Permian Basin District
500 W. Illinois
Suite 500
Midland, Texas 79701
915/687-3551

Santa Fe Energy Operating Partners, L.P.

Santa Fe Pacific Exploration Company
Managing General Partner

November 7, 1986

Director
Oil Conservation Division
Energy and Minerals Department
State of New Mexico
P. O. Box 2088
Santa Fe, New Mexico 87501

Re: Chase State 2 No. 1
Sec. 2-22S-27E
Eddy County, New Mexico


Gentlemen:

Santa Fe Energy Operating Partners, L.P. requests administrative approval of an unorthodox location for a 10,700'± Strawn test to be drilled 1980' FWL, 990' FSL, Section 2, T-22S, R-27E, Eddy County, New Mexico.

The reasons for this request are geologic. The relevant geologic exhibits are enclosed.

All offset operators have been notified by certified or registered mail of this request for administrative approval of an unorthodox location.

Sincerely,



Billie Hood
Senior Production Clerk

BH/dw

Enclosures

dz-185

Permian Basin District
500 W. Illinois
Suite 500
Midland, Texas 79701
915/687-3551

Santa Fe Energy Operating Partners, L.P.

Santa Fe Pacific Exploration Company
Managing General Partner

November 7, 1986

Mr. Richard Stamets
Director, Oil Conservation Division
Energy and Minerals Department
State of New Mexico
Box 2088
Santa Fe, NM 87501

RE: Geological Exhibits
SFEOP, LP #1 Chase State "2"
Eddy County, New Mexico

Dear Mr. Stamets:

Santa Fe Energy Operating Partners, L.P., Exploration Department, is proposing an unorthodox location 990' FSL, 1980' FWL, Section 2, T22S, R27E, Eddy County, New Mexico.

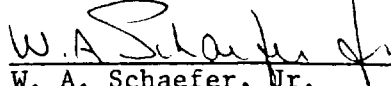
The proposed well will test the primary objective Second Strawn Carbonate and secondary objective Wolfcamp Carbonate. During "second Strawn" time, the prospect area was located on a marine shelf with the basinward shelfedge located approximately 5 miles southeast of the proposed location. The environment was characterized by vigorous marine biological activity with phylloid algae growing to form reef mounds. The constant pounding of waves against the mounds eroded skeletal fragments which were carried down the reef-front where they collected to form talus slope deposits. Secondary solution of these talus deposits has provided the necessary porosity and permeability to form what is now the reservoir facies of the Strawn. The second Strawn reservoir encountered in the Western #1 Bass located in Section 11, T22S, R27E is interpreted to extend north-westward through the proposed location and terminate against the "tight" reef facies in Section 3. (See Isopach Map)

The proposed location is located on a positive structural feature (see structure map) and should drain that part of the reservoir which expands the W2 of Section 2.

The location Santa Fe Energy Operating Partners, L.P. has proposed is the most logical one based upon our knowledge of the Strawn formation in the prospect area.

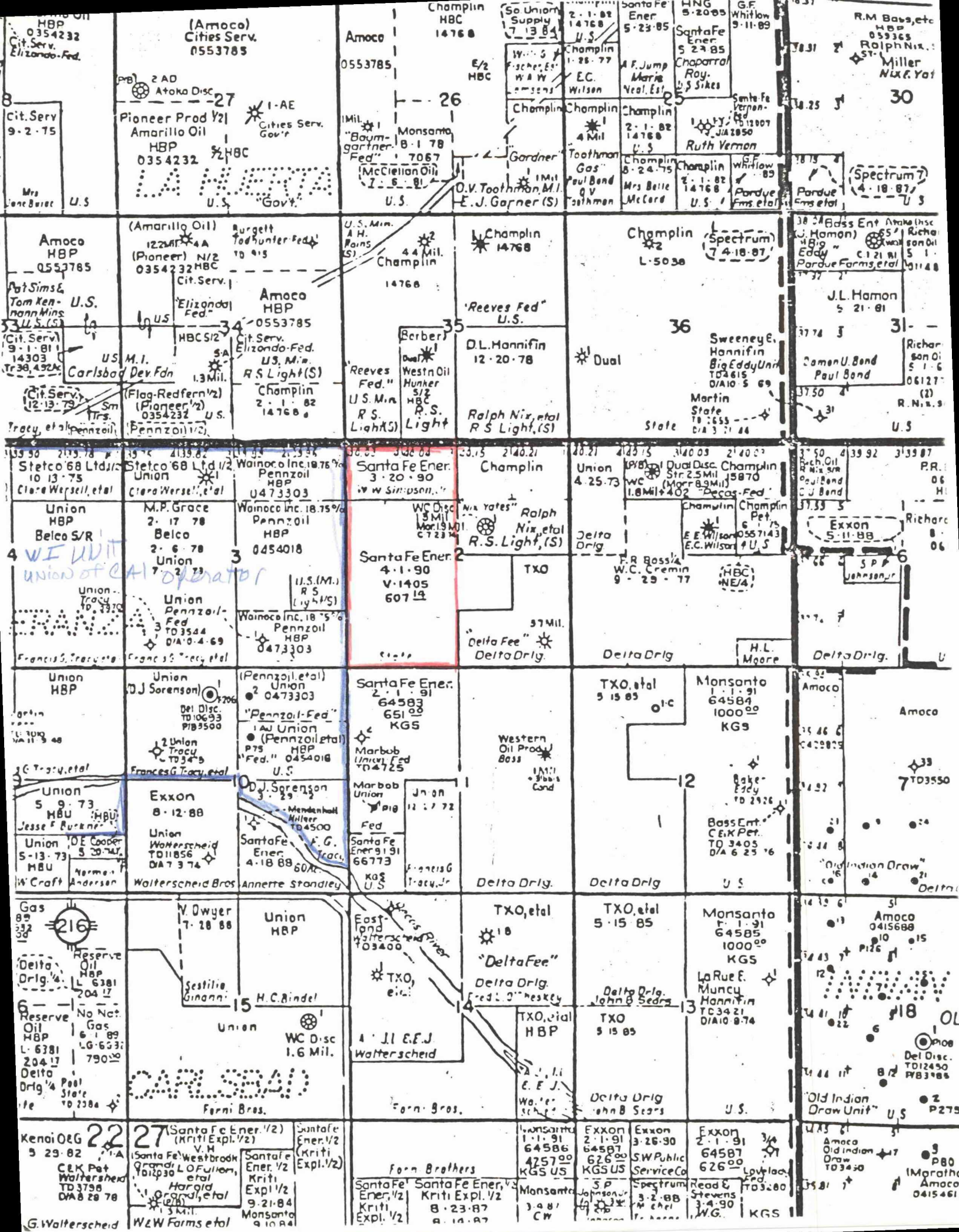
Yours truly,

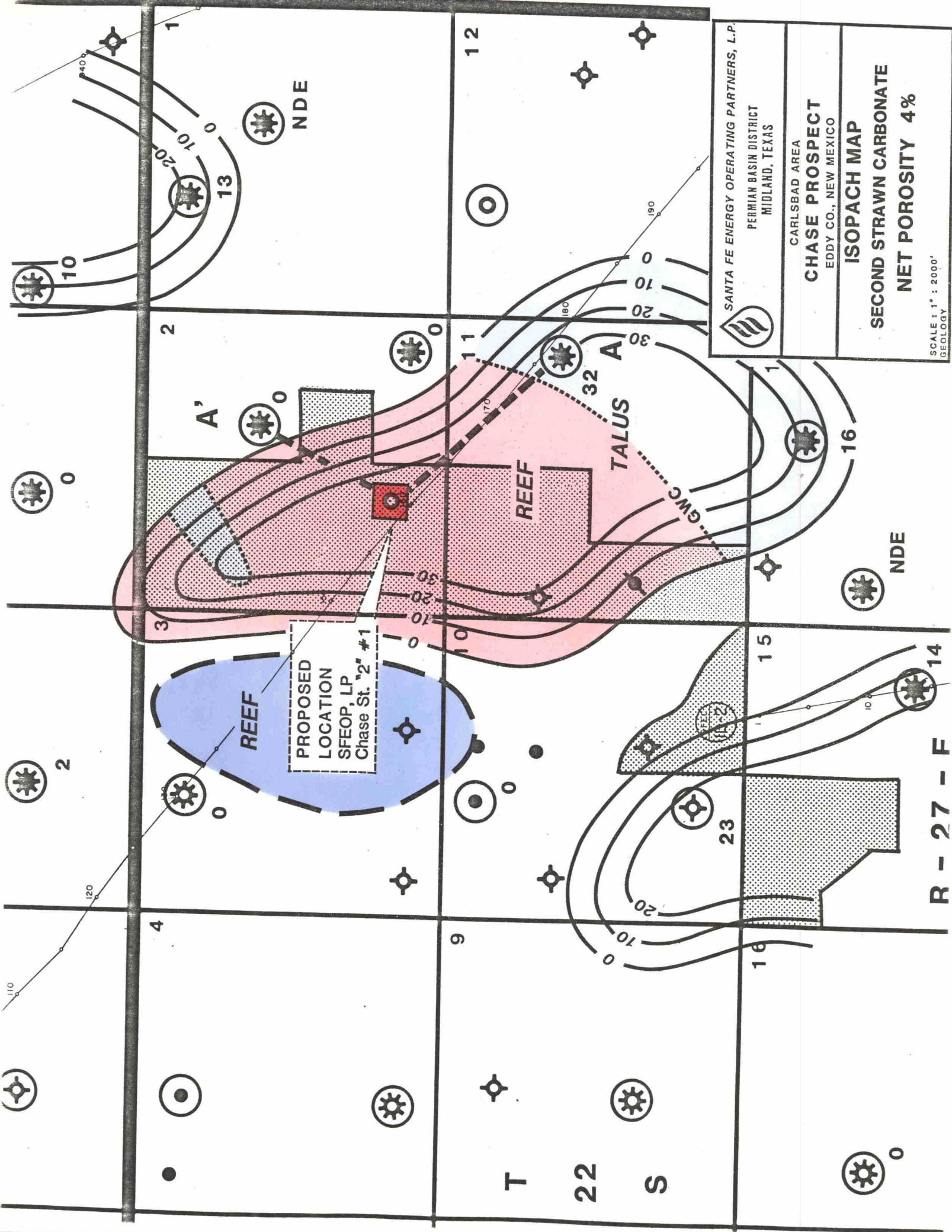
SANTA FE ENERGY OPERATING PARTNERS, L.P.
By Santa Fe Pacific Exploration Company
as Managing General Partner


W. A. Schaefer, Jr.
Exploration Manager

cys751

Permian Basin District
500 W. Illinois
Suite 500
Midland, Texas 79701
915/687-3551





SANTA FE ENERGY OPERATING PARTNERS, L.P.
PERMIAN BASIN DISTRICT
MIDLAND, TEXAS

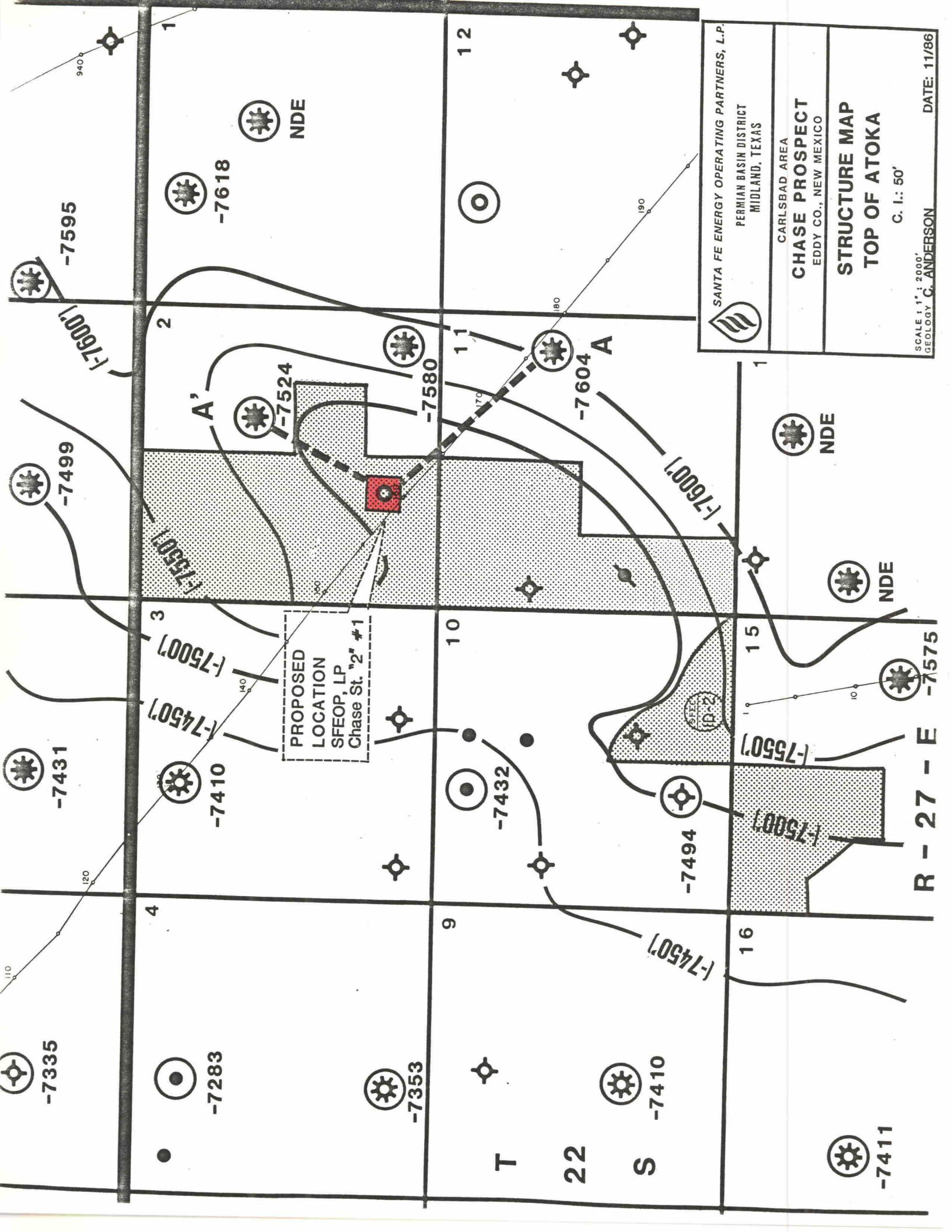
CARLSBAD AREA
CHASE PROSPECT
EDDY CO., NEW MEXICO

ISOPACH MAP
SECOND STRAWN CARBONATE
NET POROSITY 4%


SCALE 1" = 2000'
GEOLOGY

PROPOSED
LOCATION
SFEOP, LP
Chase St. "2" #1

R - 27 - F



PROPOSED
LOCATION
SFEOP, LP
Chase St. "2" #1

	SANTA FE ENERGY OPERATING PARTNERS, L.P.	
	PERMIAN BASIN DISTRICT MIDLAND, TEXAS	
	CARLSBAD AREA	
	CHASE PROSPECT EDDY CO., NEW MEXICO	
	STRUCTURE MAP TOP OF ATOKA	
	C. I.: 50'	
	SCALE 1" = 2000'	DATE: 11/86
	GEOLOGY C. ANDERSON	

STATE OF NEW MEXICO
ENERGY AND MINERALS DEPARTMENT

OIL CONSERVATION DIVISION

P. O. BOX 2088

SANTA FE, NEW MEXICO 87501

Form C-101
Revised 10-1-78

NO. OF COPIES RECEIVED	
DISTRIBUTION	
SANTA FE	
FILE	
U.S.G.S.	
LAND OFFICE	
OPERATOR	

5A. Indicate Type of Lease
STATE ☒ FEE ☐
5. State Oil & Gas Lease No.
1405

APPLICATION FOR PERMIT TO DRILL, DEEPEN, OR PLUG BACK

1a. Type of Work DRILL <input type="checkbox"/> DEEPEN <input type="checkbox"/> PLUG BACK <input type="checkbox"/>		7. Unit Agreement Name
b. Type of Well OIL WELL <input type="checkbox"/> GAS WELL <input type="checkbox"/> OTHER <input type="checkbox"/> SINGLE ZONE <input type="checkbox"/> MULTIPLE ZONE <input type="checkbox"/>		8. Farm or Lease Name Chase State 2
2. Name of Operator Santa Fe Energy Operating Partners, L. P.		9. Well No. 1
3. Address of Operator 500 W. Illinois, Suite 500, Midland, TX 79701		10. Field and Pool, or Wildcat Undes. East Carlsbad (Strawn)
4. Location of Well UNIT LETTER N LOCATED 1980 FEET FROM THE West LINE AND 990 FEET FROM THE South LINE OF SEC. 2 TWP. 22S RGE. 27E NMPM		12. County Eddy
19. Proposed Depth 10,700'		19A. Formation Strawn
20. Rotary or C.T. Rotary		
11. Elevations (show whether DF, RT, etc.) 3105.4 GL	21A. Kind & Status Plug. Bond Current-Blanket	21B. Drilling Contractor To be determined
22. Approx. Date Work will start As soon as permitted		

PROPOSED CASING AND CEMENT PROGRAM

SIZE OF HOLE	SIZE OF CASING	WEIGHT PER FOOT	SETTING DEPTH	SACKS OF CEMENT	EST. TOP
17 1/2"	13 3/8"	48.0	450'	475	Surface
12 1/4"	8 5/8"	24.0	2200'	980	Surface
7 7/8"	5 1/2"	17.0	10700'	400	8000'

Move on location and rig up. Drill 17 1/2" hole to 450'. Run 13 3/8" casing and cement with 627 cu.ft. of Class C cement containing 2% CaCl₂. Wait on cement until 500 psi compressive strength is obtained. Nipple up diverter system consisting of 1 bag type preventer. Test casing to 600 psi. Drill 12 1/4" hole to 2200'. Run 8 5/8" casing and cement with 1550 cu.ft. 65/65 Class C poz containing 0.25# per sack flocele followed by 396 cu.ft. Class C containing 2% CaCl₂. Wait on cement until 500 psi compressive strength is obtained. Nipple up 5000 psi double ram BOP with hydrill. Test casing to 1500 psi. Drill 7 7/8" hole to 10,700'. Either plug and abandon or run 5 1/2" casing and cement with sufficient Class H to cover possible producing zones.

IN ABOVE SPACE DESCRIBE PROPOSED PROGRAM; IF PROPOSAL IS TO DEEPEN OR PLUG BACK, GIVE DATA ON PRESENT PRODUCTIVE ZONE AND PROPOSED NEW PRODUCTIVE ZONE. GIVE BLOWOUT PREVENTER PROGRAM, IF ANY.

I hereby certify that the information above is true and complete to the best of my knowledge and belief.

Signed Michael R. Burton Title Senior Drilling Engineer Date 11/5/86

(This space for State Use)

APPROVED BY _____ TITLE _____ DATE _____

CONDITIONS OF APPROVAL, IF ANY:

**NEW MEXICO OIL CONSERVATION COMMISSION
WELL LOCATION AND ACREAGE DEDICATION PLAT**

Form C-102
Supersedes C-128
Effective 1-1-65

All distances must be from the outer boundaries of the Section.

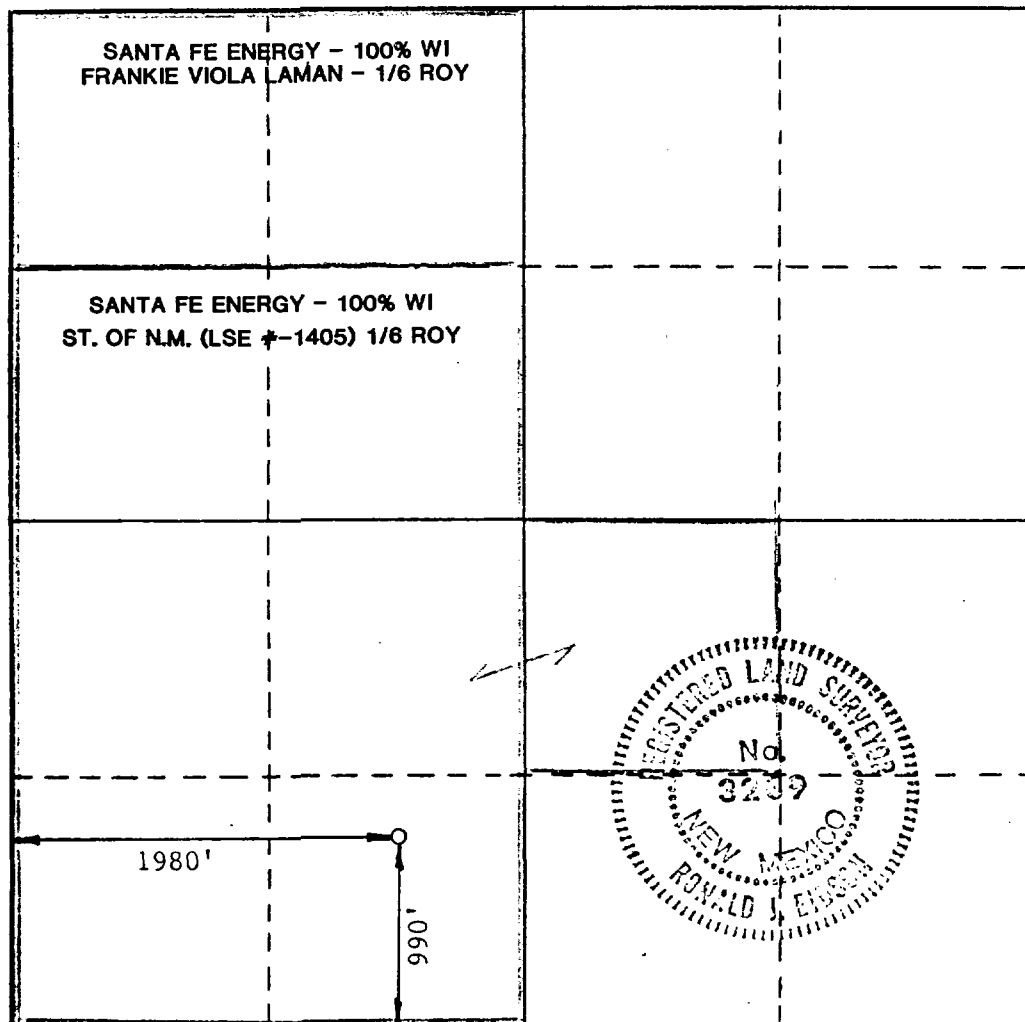
Operator Santa Fe Operating Partners LP			Lease Chase State 2		Well No. 1
Unit Letter N	Section 2	Township 22 South	Range 27 East	County Eddy	
Actual Footage Location of Well: <div style="display: flex; justify-content: space-between;"> 990 feet from the South line and 1980 feet from the West line </div>					
Ground Level Elev. 3105.4	Producing Formation Strawn	Pool Undes. E. Carlsbad Strawn		Dedicated Acreage: 320 Acres	

1. Outline the acreage dedicated to the subject well by colored pencil or hatchure marks on the plat below.
2. If more than one lease is dedicated to the well, outline each and identify the ownership thereof (both as to working interest and royalty).
3. If more than one lease of different ownership is dedicated to the well, have the interests of all owners been consolidated by communitization, unitization, force-pooling, etc?

☒ Yes ☐ No If answer is "yes," type of consolidation Communitization

If answer is "no," list the owners and tract descriptions which have actually been consolidated. (Use reverse side of this form if necessary.) _____

No allowable will be assigned to the well until all interests have been consolidated (by communitization, unitization, forced-pooling, or otherwise) or until a non-standard unit, eliminating such interests, has been approved by the Commission.



CERTIFICATION

I hereby certify that the information contained herein is true and complete to the best of my knowledge and belief.

Name Michael R. Burton
 Position SANTA FE ENERGY OPER. PART. LP
 Company _____

Date 11-7-86

I hereby certify that the well location shown on this plat was plotted from field notes of actual surveys made by me or under my supervision, and that the same is true and correct to the best of my knowledge and belief.

Date Surveyed
November 3 & 4, 1986

Registered Professional Engineer and/or Land Surveyor

Ronald J. Eidson
 Certificate No. **JOHN W. WEST, 676**
RONALD J. EIDSON, 3239



Santa Fe Energy Operating Partners, L.P.

Santa Fe Pacific Exploration Company
Managing General Partner

CERTIFIED MAIL

Return Receipt Requested

November 5, 1986

Western Oil Producers, Inc.
P.O. Box 2055
Roswell, New Mexico 88201

ATTN: Land Department

Re: Chase State #2-1
990' FSL, 1980' FWL,
Sec. 2, T-22-S, R-27-E,
Eddy County, New Mexico
Chase Prospect

Gentlemen:

This is to inform you of Santa Fe's request to the New Mexico Oil Conservation Division (OCD) for Administrative Approval of its unorthodox location of 990' FSL and 1980' FWL in Section 2, T-22-S, R-27-E, Eddy County, New Mexico for a 10,700' Strawn test well. The West Half (W/2) of said section will be the proration unit for this well.

Current plans are to set these matters for hearing before the OCD on December 3, 1986, however, should Administrative Approval be granted, the hearing will be cancelled.

You may file any objections or requests for hearing with the OCD at P.O. Box 2088, Santa Fe, New Mexico, 87501.

It is requested that you respond to this waiver as soon as possible.

Sincerely yours,

SANTA FE ENERGY OPERATING PARTNERS, L.P.
By Santa Fe Pacific Exploration Company
as Managing General Partner

By Patrick J. Tower
Patrick J. Tower, Senior Landman

PJT/efw

Permian Basin District
500 W. Illinois
Suite 500
Midland, Texas 79701
915/687-3551

Page 2 of that certain request for permission letter to:
Western Oil Producers, Inc.
Dated November 5, 1986

BY SIGNATURE HERETO, WE HAVE NO OBJECTION TO THE GRANTING OF A PERMIT TO DRILL AT
THE ABOVE SPECIFIED LOCATION, FOR THE ABOVE SPECIFIED FORMATION AND HEREBY WAIVE
OBJECTION AND NOTICE OF HEARING ON THIS APPLICATION.

BY _____

Date _____

Title:

Company:

EFW2234-4



Santa Fe Energy Operating Partners, L.P.

Santa Fe Pacific Exploration Company
Managing General Partner

CERTIFIED MAIL

Return Receipt Requested

November 5, 1986

Union Oil of California
500 N. Marienfeld
P.O. Box 671
Midland, Texas 79701

ATTN: Wayne Strong

Re: Chase State #2-1
990' FSL, 1980' FWL,
Sec. 2, T-22-S, R-27-E,
Eddy County, New Mexico
Chase Prospect

Gentlemen:

This is to inform you of Santa Fe's request to the New Mexico Oil Conservation Division (OCD) for Administrative Approval of its unorthodox location of 990' FSL and 1980' FWL in Section 2, T-22-S, R-27-E, Eddy County, New Mexico for a 10,700' Strawn test well. The West Half (W/2) of said section will be the proration unit for this well.

Current plans are to set these matters for hearing before the OCD on December 3, 1986, however, should Administrative Approval be granted, the hearing will be cancelled.

You may file any objections or requests for hearing with the OCD at P.O. Box 2088, Santa Fe, New Mexico, 87501.

It is requested that you respond to this waiver as soon as possible.

Sincerely yours,

SANTA FE ENERGY OPERATING PARTNERS, L.P.
By Santa Fe Pacific Exploration Company
as Managing General Partner

By

Patrick J. Tower
Patrick J. Tower, Senior Landman

PJT/efw

Permian Basin District
500 W. Illinois
Suite 500
Midland, Texas 79701
915/687-3551

Page 2 of that certain request for permission letter to:
Union Oil of California
Dated November 5, 1986

BY SIGNATURE HERETO, WE HAVE NO OBJECTION TO THE GRANTING OF A PERMIT TO DRILL AT THE ABOVE SPECIFIED LOCATION, FOR THE ABOVE SPECIFIED FORMATION AND HEREBY WAIVE OBJECTION AND NOTICE OF HEARING ON THIS APPLICATION.

BY _____

Date _____

Title:

Company:

EFW2234-3



Santa Fe Energy Operating Partners, L.P.

Santa Fe Pacific Exploration Company
Managing General Partner

CERTIFIED MAIL

Return Receipt Requested

November 5, 1986

Champlin Petroleum Company
4 Allen Center, Suite 1500
1400 Smith Street
Houston, Texas 77002

ATTN: Stephen Dangos

Re: Chase State #2-1
990' FSL, 1980' FWL,
Sec. 2, T-22-S, R-27-E,
Eddy County, New Mexico
Chase Prospect

Gentlemen:

This is to inform you of Santa Fe's request to the New Mexico Oil Conservation Division (OCD) for Administrative Approval of its unorthodox location of 990' FSL and 1980' FWL in Section 2, T-22-S, R-27-E, Eddy County, New Mexico for a 10,700' Strawn test well. The West Half (W/2) of said section will be the proration unit for this well.

Current plans are to set these matters for hearing before the OCD on December 3, 1986, however, should Administrative Approval be granted, the hearing will be cancelled.

You may file any objections or requests for hearing with the OCD at P.O. Box 2088, Santa Fe, New Mexico, 87501.

It is requested that you respond to this waiver as soon as possible.

Sincerely yours,

SANTA FE ENERGY OPERATING PARTNERS, L.P.
By Santa Fe Pacific Exploration Company
as Managing General Partner

By

Patrick J. Tower
Patrick J. Tower, Senior Landman

PJT/efw

Permian Basin District
500 W. Illinois
Suite 500
Midland, Texas 79701
915/687-3551

Page 2 of that certain request for permission letter to:
Champlin Petroleum Company
Dated November 5, 1986

BY SIGNATURE HERETO, WE HAVE NO OBJECTION TO THE GRANTING OF A PERMIT TO DRILL AT
THE ABOVE SPECIFIED LOCATION, FOR THE ABOVE SPECIFIED FORMATION AND HEREBY WAIVE
OBJECTION AND NOTICE OF HEARING ON THIS APPLICATION.

BY _____

Date _____

Title:

Company:

EFW2234-2



Santa Fe Energy Operating Partners, L.P.

Santa Fe Pacific Exploration Company
Managing General Partner

CERTIFIED MAIL

Return Receipt Requested

November 5, 1986

TXO Production Company
900 Wilco Bldg.
Midland, Texas 79701

ATTN: David Hundley
District Landman

Re: Chase State #2-1
990' FSL, 1980' FWL,
Sec. 2, T-22-S, R-27-E,
Eddy County, New Mexico
Chase Prospect

Gentlemen:

This is to inform you of Santa Fe's request to the New Mexico Oil Conservation Division (OCD) for Administrative Approval of its unorthodox location of 990' FSL and 1980' FWL in Section 2, T-22-S, R-27-E, Eddy County, New Mexico for a 10,700' Strawn test well. The West Half (W/2) of said section will be the proration unit for this well.

Current plans are to set these matters for hearing before the OCD on December 3, 1986, however, should Administrative Approval be granted, the hearing will be cancelled.

You may file any objections or requests for hearing with the OCD at P.O. Box 2088, Santa Fe, New Mexico, 87501.

It is requested that you respond to this waiver as soon as possible.

Sincerely yours,

SANTA FE ENERGY OPERATING PARTNERS, L.P.
By Santa Fe Pacific Exploration Company
as Managing General Partner

By Patrick J. Tower
Patrick J. Tower, Senior Landman

PJT/efw

Permian Basin District
500 W. Illinois
Suite 500
Midland, Texas 79701
915/687-3551

Page 2 of that certain request for permission letter to:
TXO Production Company
Dated November 5, 1986

BY SIGNATURE HERETO, WE HAVE NO OBJECTION TO THE GRANTING OF A PERMIT TO DRILL AT
THE ABOVE SPECIFIED LOCATION, FOR THE ABOVE SPECIFIED FORMATION AND HEREBY WAIVE
OBJECTION AND NOTICE OF HEARING ON THIS APPLICATION.

BY _____

Date _____

Title:

Company:

EFW2234-1