



Midland Division  
Exploration and Production

Conoco Inc.  
10 Desta Drive West  
Midland, TX 79705-4514  
(915) 686-5400

January 25, 1991

Mr. Michael E. Stogner  
New Mexico Oil Conservation Division  
Department of Energy, Minerals and Natural Resources  
P.O. Box 2088  
Santa Fe, New Mexico 87501

Dear Mr. Stogner:

Request for Examiner Hearing  
February 21, 1991 for Approval of  
an Unorthodox Location for the  
Burger B-20 Well No. 4 to be  
Drilled in the Warren McKee Simpson  
Pool, at 2200' FNL & 2450' FWL, Sec. 20,  
T-20S, R-38E, Lea County, New Mexico

RECEIVED  
JAN 27 1991  
OIL CONSERVATION DIVISION  
102-16

- (1) Conoco requests authority to drill and complete its proposed Burger B-20 Well No. 4 at an unorthodox location, 2200' FNL & 2450' FWL of Section 20, T-20S, R-38E, Lea County, New Mexico and to dedicate the 40 acres of the SE4 NW4 of Section 20 to this well.
- (2) This well is proposed to be drilled as a producer from the McKee formation in Conoco's Warren McKee Waterflood.
- (3) This unorthodox location is required for geologic reasons to recover oil reserves being banked by the waterflood against a confining fault on the east side of the pool.
- (4) This is the best location for maximum recovery of reserves from this part of the reservoir and is needed to prevent waste. The granting of this Application will not impair the correlative rights of any party.
- (5) Copies of this Application are being sent to all known offset operators.

Very truly yours,

Jerry W. Hoover  
Regulatory Coordinator

JWH/tm

Appropriate  
Office  
and 4 copies  
and 3 copies

State of New Mexico  
Energy, Minerals and Natural Resources Department

Form C-108  
Revised 1-1-88

OIL CONSERVATION DIVISION

P.O. Box 2088  
Santa Fe, New Mexico 87504-2088

DISTRICT I  
P.O. Box 1988, Hobbs, NM 88240

DISTRICT II  
P.O. Drawer DD, Artesia, NM 88210

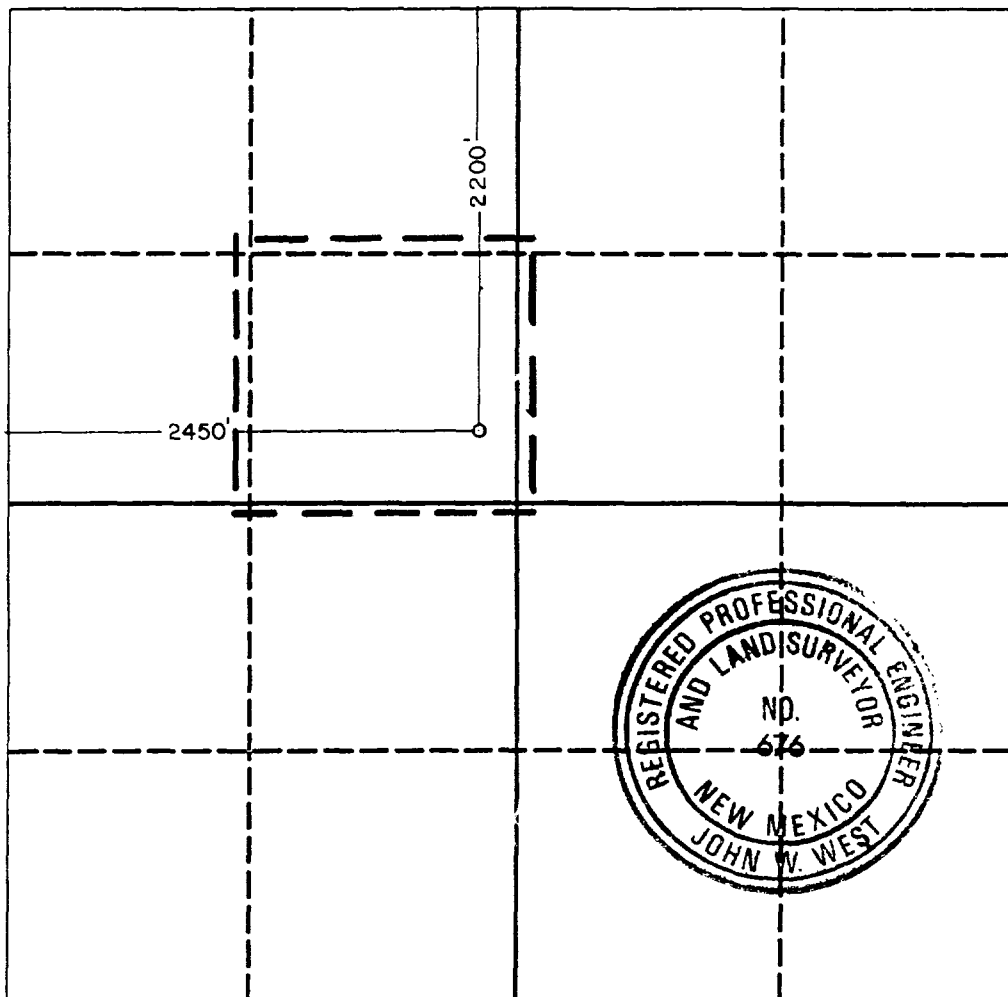
DISTRICT III  
1000 Rio Brazos Rd., Aztec, NM 87410

WELL LOCATION AND ACREAGE DEDICATION PLAT

All Distances must be from the outer boundaries of the section

Operator CONOCO, INC.			Lease BURGER B-20		Well No. 4
Unit Letter F	Section 20	Township 20 SOUTH	Range 38 EAST	County LEA	
Actual Footage Location of Well: 2450 feet from the WEST line and 2200 feet from the NORTH line					
Ground level Elev. 3550.8	Producing Formation McKee		Pool Warren McKee Simpson		Dedicated Acreage: 40 Acres

- Outline the acreage dedicated to the subject well by colored pencil or hatchure marks on the plat below.
- If more than one lease is dedicated to the well, outline each and identify the ownership thereof (both as to working interest and royalty).
- If more than one lease of different ownership is dedicated to the well, have the interest of all owners been consolidated by communitization, unitization, force-pooling, etc?  
☐ Yes ☐ No If answer is "yes" type of consolidation \_\_\_\_\_  
If answer is "no" list the owners and tract descriptions which have actually been consolidated. (Use reverse side of this form if necessary).  
No allowable will be assigned to the well until all interests have been consolidated (by communitization, unitization, forced-pooling, or otherwise) or until a non-standard unit, eliminating such interest, has been approved by the Division.



OPERATOR CERTIFICATION

I hereby certify that the information contained herein is true and complete to the best of my knowledge and belief.

Signature  
*Jerry W. Hoover*  
Printed Name  
Jerry W. Hoover  
Position  
Regulatory Coordinator  
Company  
Conoco Inc.  
Date  
1/22/91

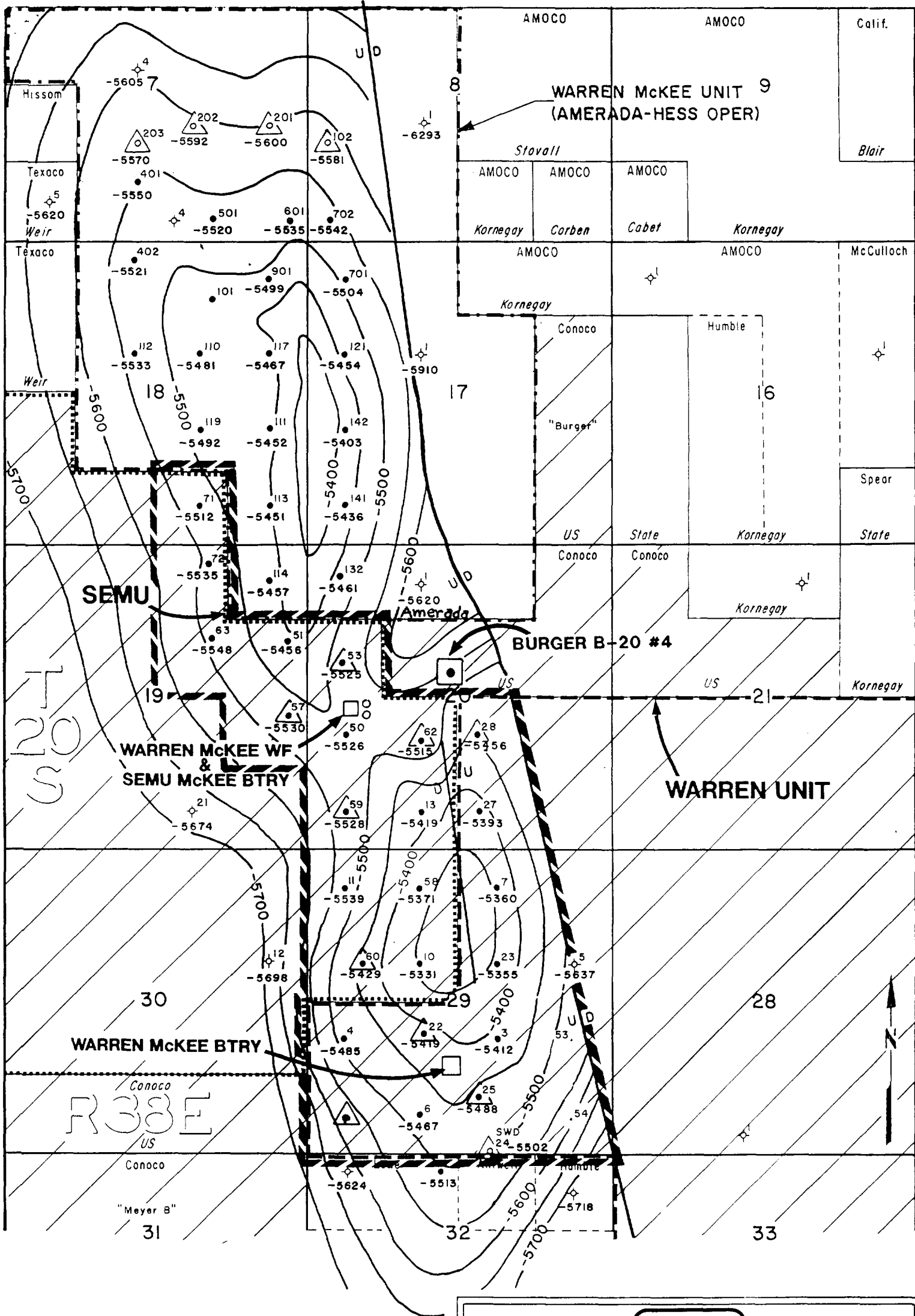
SURVEYOR CERTIFICATION

I hereby certify that the well location shown on this plat was plotted from field notes of actual surveys made by me or under my supervision, and that the same is true and correct to the best of my knowledge and belief.

Date Surveyed  
12-21-90

Signature & Seal of  
Professional Surveyor

*Ronald J. Eidson*  
Certificate No. JOHN W. WEST, 676  
RONALD J. EIDSON, 3239



CONTOUR INTERVAL = 50'

conoco

PRODUCTION DEPARTMENTHOBBS DIVISION

WARREN McKEE WATERFLOOD  
LEA COUNTY, NEW MEXICO  
TOP McKEE PAY SAND

SCALE  
01000'2000'

J.F. McC. 10/90F.E.M.



Midland Division  
Exploration and Production

Conoco Inc.  
10 Desta Drive West  
Midland, TX 79705-4514  
(915) 686-5400

January 25, 1991

Mr. Michael E. Stogner  
New Mexico Oil Conservation Division  
Department of Energy, Minerals and Natural Resources  
P.O. Box 2088  
Santa Fe, New Mexico 87501

Dear Mr. Stogner:

Request for Examiner Hearing  
February 21, 1991 for Approval of  
an Unorthodox Location for the  
Burger B-20 Well No. 4 to be  
Drilled in the Warren McKee Simpson  
Pool, at 2200' FNL & 2450' FWL, Sec. 20,  
T-20S, R-38E, Lea County, New Mexico

RECEIVED

JAN 27 1991

OIL CONSERVATION DIVISION

10246

- (1) Conoco requests authority to drill and complete its proposed Burger B-20 Well No. 4 at an unorthodox location, 2200' FNL & 2450' FWL of Section 20, T-20S, R-38E, Lea County, New Mexico and to dedicate the 40 acres of the SE4 NW4 of Section 20 to this well.
- (2) This well is proposed to be drilled as a producer from the McKee formation in Conoco's Warren McKee Waterflood.
- (3) This unorthodox location is required for geologic reasons to recover oil reserves being banked by the waterflood against a confining fault on the east side of the pool.
- (4) This is the best location for maximum recovery of reserves from this part of the reservoir and is needed to prevent waste. The granting of this Application will not impair the correlative rights of any party.
- (5) Copies of this Application are being sent to all known offset operators.

Very truly yours,

Jerry W. Hoover  
Regulatory Coordinator

JWH/tm

Submit to Appropriate  
District Office  
State Lease - 4 copies  
Fee Lease - 3 copies

State of New Mexico  
Energy, Minerals and Natural Resources Department

Form C-100  
Revised 1-1-80

OIL CONSERVATION DIVISION

P.O. Box 2088  
Santa Fe, New Mexico 87504-2088

DISTRICT I  
P.O. Box 1908, Hobbs, NM 88240

DISTRICT II  
P.O. Denver DD, Artesia, NM 88210

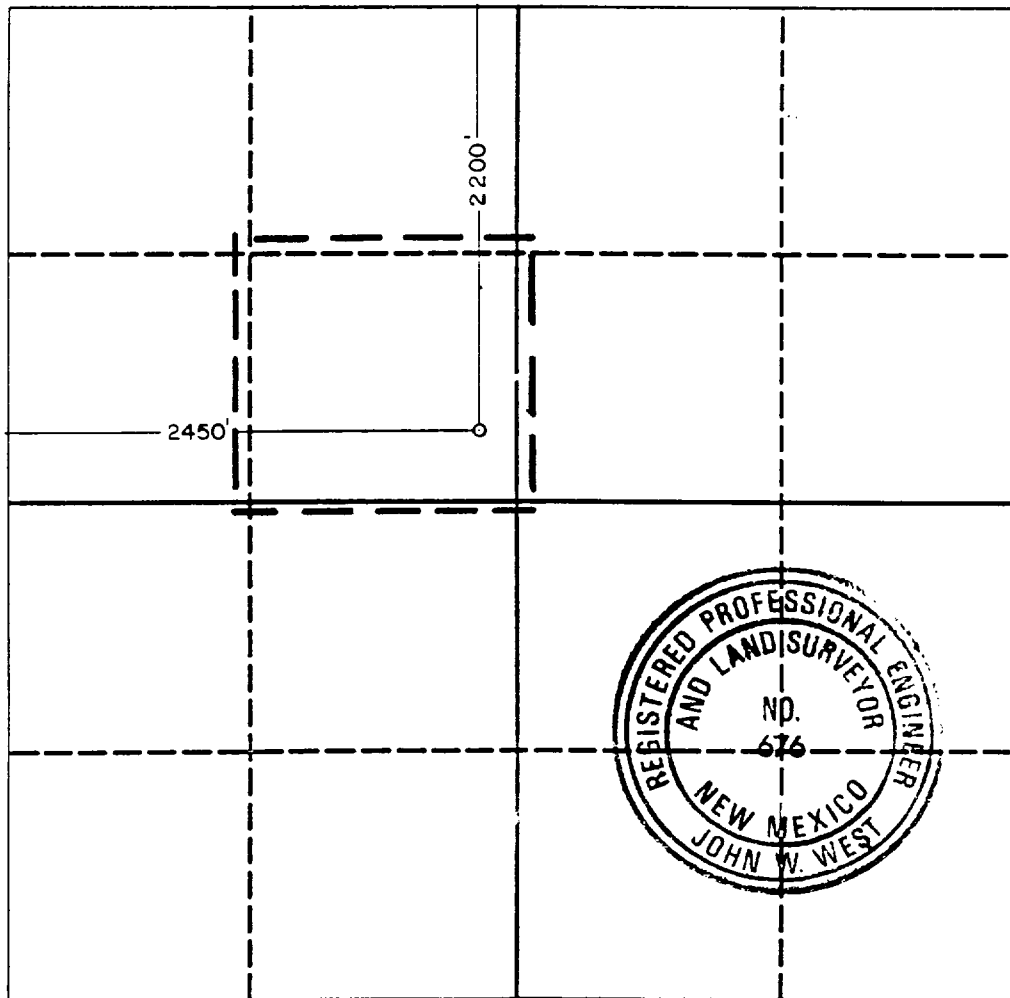
DISTRICT III  
1000 Rio Brazos Rd., Aztec, NM 87410

WELL LOCATION AND ACREAGE DEDICATION PLAT

All Distances must be from the outer boundaries of the section

Operator CONOCO, INC.			Lease BURGER B-20		Well No. 4
Unit Letter F	Section 20	Township 20 SOUTH	Range 38 EAST	County LEA	
Actual Footage Location of Well: 2450 feet from the WEST line and 2200 feet from the NORTH line					
Ground level Elev. 3550.8	Producing Formation McKee		Pool Warren McKee Simpson		Dedicated Acreage: 40 Acres

- Outline the acreage dedicated to the subject well by colored pencil or hatchure marks on the plat below.
- If more than one lease is dedicated to the well, outline each and identify the ownership thereof (both as to working interest and royalty).
- If more than one lease of different ownership is dedicated to the well, have the interest of all owners been consolidated by communitization, unitization, force-pooling, etc?  
☐ Yes ☐ No If answer is "yes" type of consolidation \_\_\_\_\_  
If answer is "no" list the owners and tract descriptions which have actually been consolidated. (Use reverse side of this form if necessary). \_\_\_\_\_  
No allowable will be assigned to the well until all interests have been consolidated (by communitization, unitization, forced-pooling, or otherwise) or until a non-standard unit, eliminating such interest, has been approved by the Division.



OPERATOR CERTIFICATION

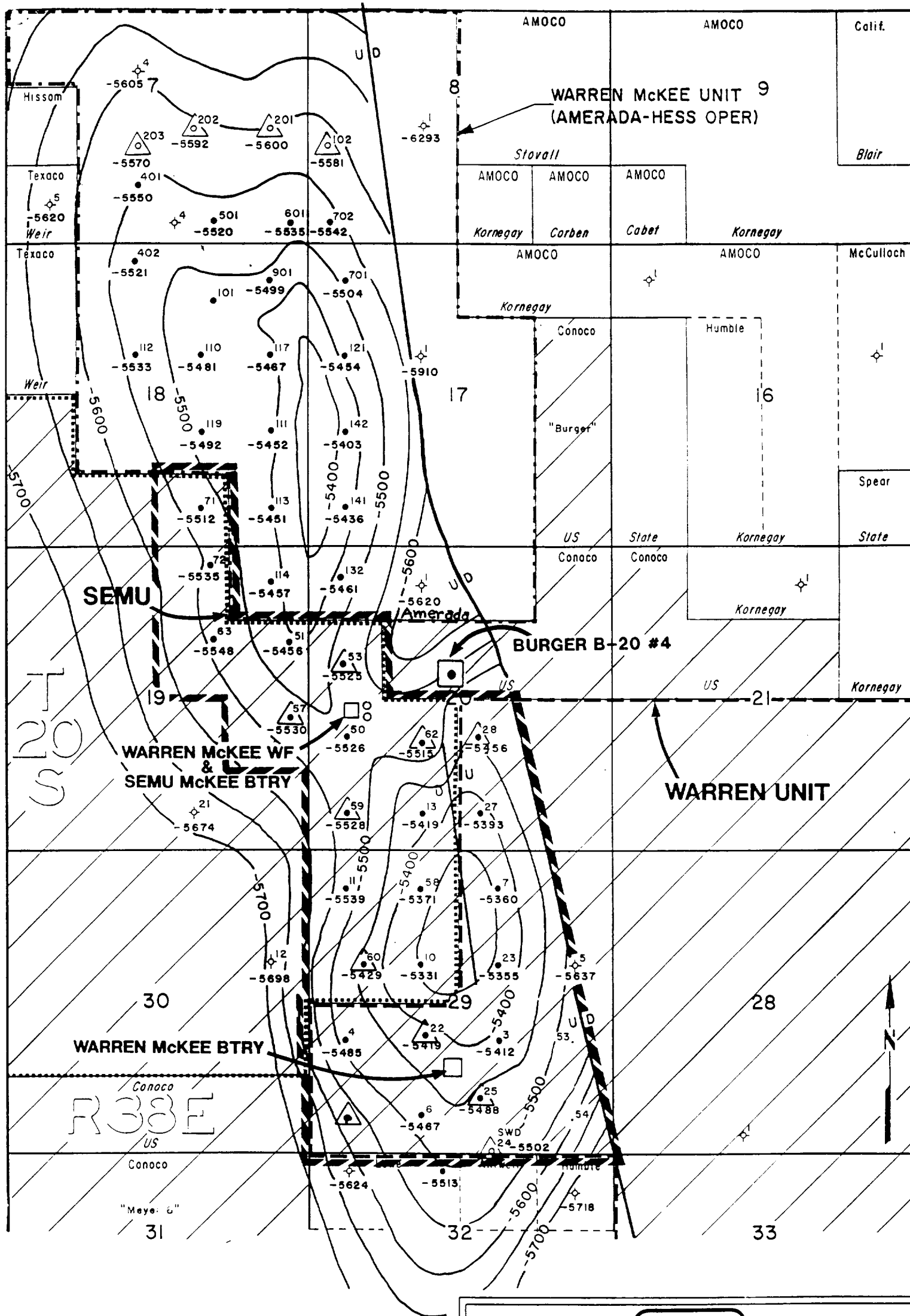
I hereby certify that the information contained herein is true and complete to the best of my knowledge and belief.

Signature  
*Jerry W. Hoover*  
Printed Name  
Jerry W. Hoover  
Position  
Regulatory Coordinator  
Company  
Conoco Inc.  
Date  
1/22/91


SURVEYOR CERTIFICATION

I hereby certify that the well location shown on this plat was plotted from field notes of actual surveys made by me or under my supervision, and that the same is true and correct to the best of my knowledge and belief.

Date Surveyed  
12-21-90  
Signature & Seal of  
Professional Surveyor  
*John W. West*  
Certificate No. JOHN W. WEST, 676  
RONALD J. EIDSON, 3239



CONTOUR INTERVAL = 50'



PRODUCTION DEPARTMENT      HOBBS DIVISION

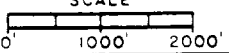
**WARREN McKEE WATERFLOOD**

LEA COUNTY, NEW MEXICO

TOP McKEE PAY SAND

J.F. McC. 10/90

SCALE



F.E.M.



Midland Division  
Exploration and Production

Conoco Inc.  
10 Desta Drive West  
Midland, TX 79705-4514  
(915) 686-5400

January 25, 1991

Mr. Michael E. Stogner  
New Mexico Oil Conservation Division  
Department of Energy, Minerals and Natural Resources  
P.O. Box 2088  
Santa Fe, New Mexico 87501

RECEIVED

Dear Mr. Stogner:

Request for Examiner Hearing  
February 21, 1991 for Approval of  
an Unorthodox Location for the  
Burger B-20 Well No. 4 to be  
Drilled in the Warren McKee Simpson  
Pool, at 2200' FNL & 2450' FWL, Sec. 20,  
T-20S, R-38E, Lea County, New Mexico

OIL CONSERVATION DIVISION

Case 10246

- (1) Conoco requests authority to drill and complete its proposed Burger B-20 Well No. 4 at an unorthodox location, 2200' FNL & 2450' FWL of Section 20, T-20S, R-38E, Lea County, New Mexico and to dedicate the 40 acres of the SE4 NW4 of Section 20 to this well.
- (2) This well is proposed to be drilled as a producer from the McKee formation in Conoco's Warren McKee Waterflood.
- (3) This unorthodox location is required for geologic reasons to recover oil reserves being banked by the waterflood against a confining fault on the east side of the pool.
- (4) This is the best location for maximum recovery of reserves from this part of the reservoir and is needed to prevent waste. The granting of this Application will not impair the correlative rights of any party.
- (5) Copies of this Application are being sent to all known offset operators.

Very truly yours,

Jerry W. Hoover  
Regulatory Coordinator

JWH/tm

Submit to Appropriate  
District Office  
State Lease - 4 copies  
Fee Lease - 3 copies

State of New Mexico  
Energy, Minerals and Natural Resources Department

Form C-100  
Revised 1-1-88

OIL CONSERVATION DIVISION

P.O. Box 2088  
Santa Fe, New Mexico 87504-2088

DISTRICT I  
P.O. Box 1988, Hobbs, NM 88240

DISTRICT II  
P.O. Drawer DD, Artesia, NM 88210

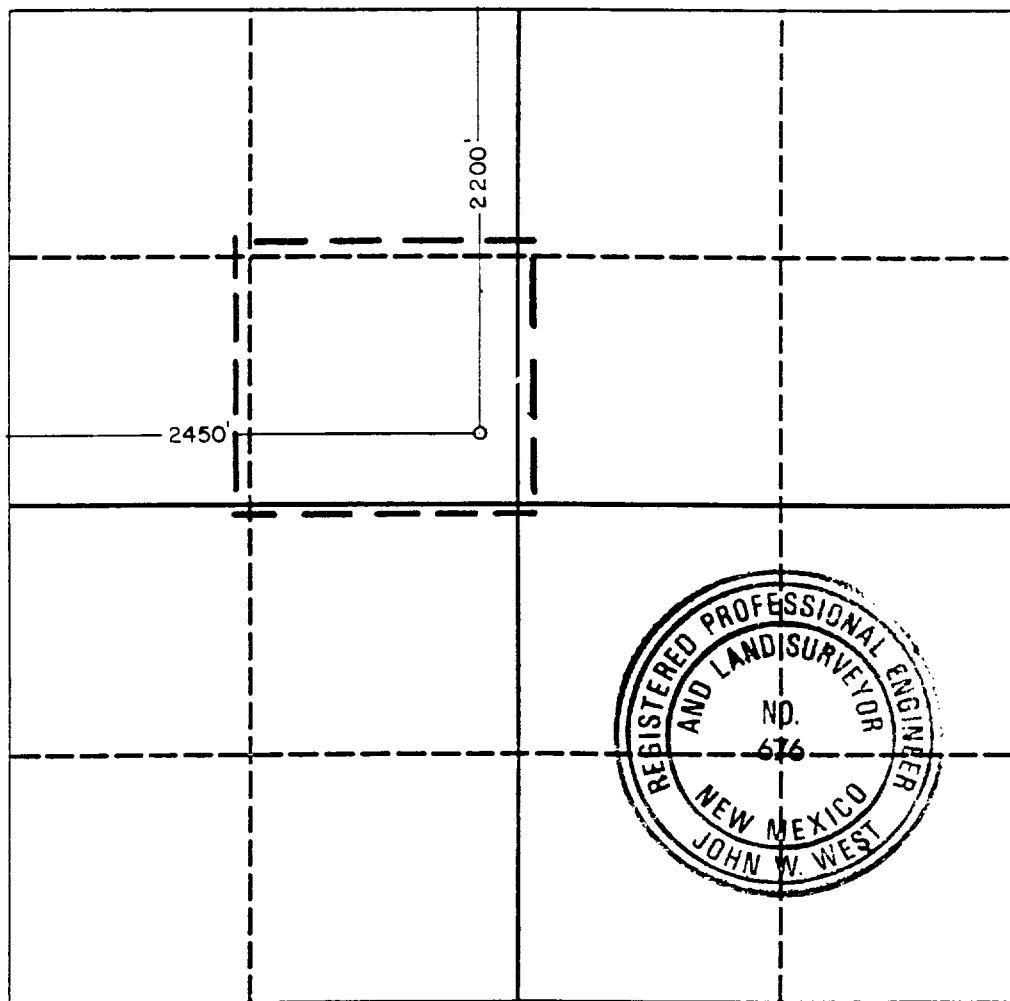
DISTRICT III  
1000 Rio Brazos Rd., Aztec, NM 87410

WELL LOCATION AND ACREAGE DEDICATION PLAT

All Distances must be from the outer boundaries of the section

Operator CONOCO, INC.			Lease BURGER B-20		Well No. 4
Unit Letter F	Section 20	Township 20 SOUTH	Range 38 EAST	County LEA	
Actual Footage Location of Well: 2450 feet from the WEST line and 2200 feet from the NORTH line					
Ground level Elev. 3550.8	Producing Formation McKee		Pool Warren McKee Simpson		Dedicated Acreage: 40 Acres

- Outline the acreage dedicated to the subject well by colored pencil or hatchure marks on the plat below.
- If more than one lease is dedicated to the well, outline each and identify the ownership thereof (both as to working interest and royalty).
- If more than one lease of different ownership is dedicated to the well, have the interest of all owners been consolidated by communitization, unitization, force-pooling, etc.?  
☐ Yes ☐ No If answer is "yes" type of consolidation \_\_\_\_\_  
If answer is "no" list the owners and tract descriptions which have actually been consolidated. (Use reverse side of this form if necessary).  
No allowable will be assigned to the well until all interests have been consolidated (by communitization, unitization, forced-pooling, or otherwise) or until a non-standard unit, eliminating such interest, has been approved by the Division.



OPERATOR CERTIFICATION

I hereby certify that the information contained herein is true and complete to the best of my knowledge and belief.

Signature  
*Jerry W. Hoover*  
Printed Name  
Jerry W. Hoover  
Position  
Regulatory Coordinator  
Company  
Conoco Inc.  
Date  
1/22/91

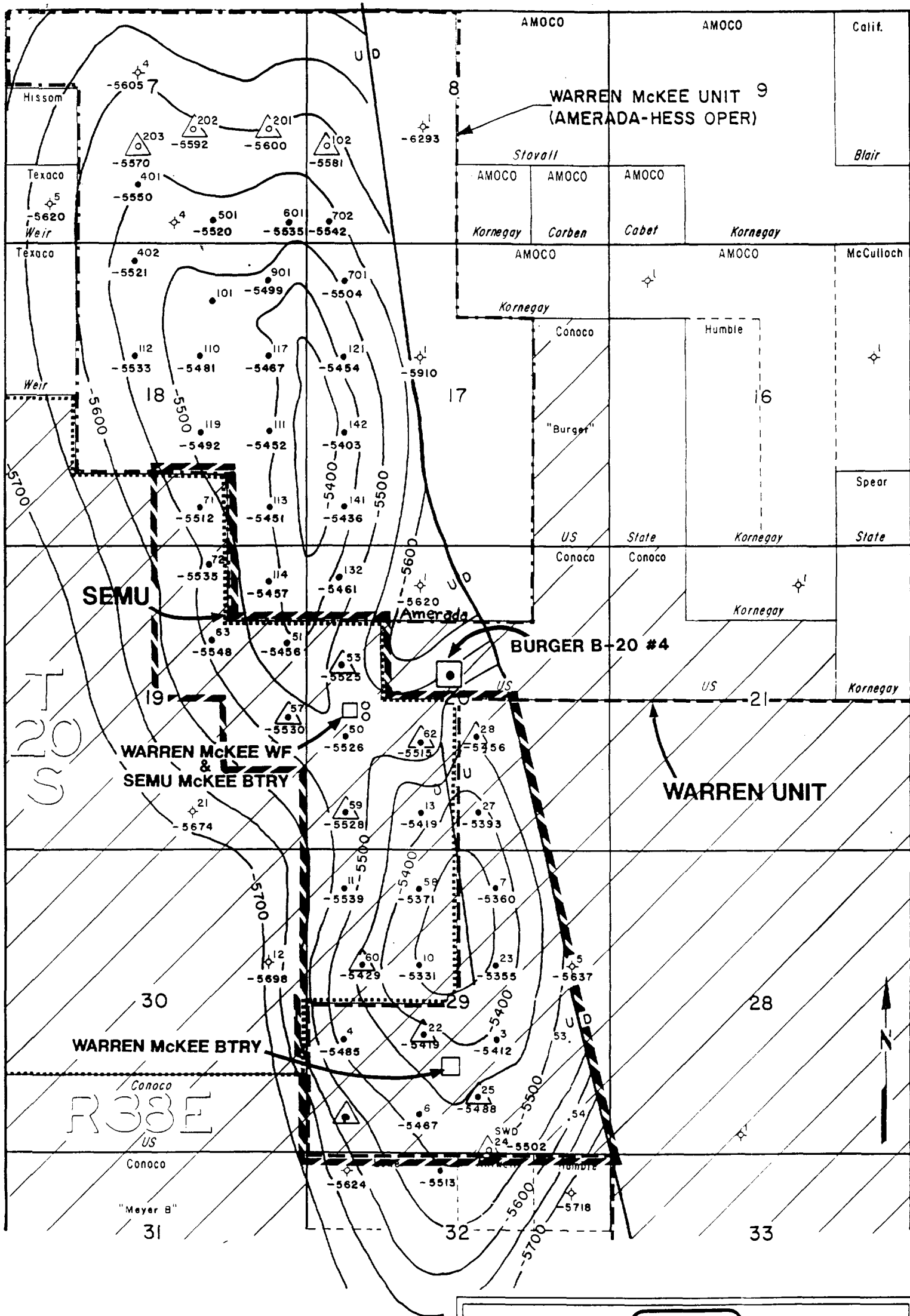
SURVEYOR CERTIFICATION

I hereby certify that the well location shown on this plat was plotted from field notes of actual surveys made by me or under my supervision, and that the same is true and correct to the best of my knowledge and belief.

Date Surveyed  
12-21-90  
Signature & Seal of  
Professional Surveyor  
*John W. West*  
Certificate No. JOHN W. WEST, 676  
RONALD J. EIDSON, 3239

125630





CONTOUR INTERVAL = 50'

conoco

PRODUCTION DEPARTMENT

HOBBS DIVISION

WARREN McKEE WATERFLOOD

LEA COUNTY, NEW MEXICO

TOP McKEE PAY SAND

SCALE

0' 1000' 2000'

J. F. McC. 10/90

F.E.M.