

**El Paso** NATURAL GAS  
COMPANY

RECEIVED  
FEB - 8 1980  
P. O. BOX 1492  
EL PASO, TEXAS 79978  
PHONE: 915-543-2600

February 4, 1980

Regional Oil and Gas Supervisor  
United States Geological Survey  
Drawer 1857  
Roswell, New Mexico 88201

Commissioner of Public Lands  
State of New Mexico  
Post Office Box 1148  
Santa Fe, New Mexico 87501

Oil Conservation Division ✓  
State of New Mexico  
Post Office Box 2088  
Santa Fe, New Mexico 87501

224  
Re: Allison Unit, I. Sec. No. 752  
San Juan County, New Mexico  
La Plata and Archuleta  
Counties, Colorado  
NOTICE OF COMPLETION OF  
ADDITIONAL WELLS,  
Mesaverde and Dakota Formations

Gentlemen:

Pursuant to Section 10 of the Allison Unit Agreement, I. Sec. No. 752, approved August 22, 1950, El Paso Natural Gas Company, as Unit Operator, hereby advises that the following five (5) Mesaverde and one (1) Dakota wells have been completed upon acreage committed to the Allison Unit:

The Allison Unit #10A Well, located 1820' from the South line and 950' from the West line of Section 20, Township 32 North, Range 6 West, N.M.P.M., was spudded on September 18, 1979, and completed on November 12, 1979, at a total depth of 6165'. The Mesaverde Formation at the intervals of 5321, 5328, 5334, 5365, 5380, 5398, 5449, 5457, 5531, 5538, 5590, 5595, 5600, 5610, 5646, 5660, 5680, 5693, 5710, 5720, 5730, 5738, 5745, 5750, 5756, 5750, 5756, 5760, 5768, 5777, 5786, 5803, 5817, 5922, 5940, 5960, 5970, 5977, 5986, 6034, 6052 was treated with a sand-water fracturing process on October 27, 1979. The well was shut-in on October 31, 1979, and after being shut-in for twelve (12) days, the Mesaverde Formation was tested on November 12, 1979, using the Pitot tube method with an after frac guage of 3333 MCF/D, with an SIPC of 1072 psia and an SIPT of 572 psia. The spacing unit for this well is described as the W/2 of Section 20, Township 32 North, Range 6 West, N.M.P.M., containing 320.00 acres.

The Allison Unit #11A Well, located 1030' from the South line and 1030' from the East line of Section 23, Township 32 North, Range 7 West, N.M.P.M., was spudded on August 17, 1979, and completed on December 3, 1979, at a total depth of 6260'. The Mesaverde Formation at the intervals of 5480, 5521, 5576, 5616, 5622, 5683, 5695, 5700, 5715, 5722, 5743, 5749, 5760, 5786, 5792, 5798, 5804, 5815, 5821, 5827, 5833, 5839, 5845, 5852, 5863, 5869, 5875, 5892, 5906, 5917, 5939, 6054, 6071, 6130, 6150 was treated with a sand-water fracturing process on November 22, 1979. The well was shut-in on November 23, 1979, and after being shut-in for ten (10) days, the Mesaverde Formation was tested on December 3, 1979, using the Pitot tube method with an after frac guage of 3466 MCF/D, with an SIPC of 1052 psia and and SIPT of 712 psia. The spacing unit for this well is described as the E/2 of Section 23, Township 32 North, Range 7 West, N.M.P.M., containing 320.00 acres.

The Allison Unit #16A Well, located 1180' from the North line and 1620' from the West line of Section 15, Township 32 North, Range 7 West, N.M.P.M., was spudded on August 27, 1979, and completed on November 19, 1979, at a total depth of 6265'. The Mesaverde Formation at the intervals of 5493, 5530, 5535, 5539, 5550, 5556, 5582, 5623, 5629, 5693, 5722, 5750, 5763, 5769, 5775, 5781, 5787, 5793, 5799, 5805, 5811, 5817, 5840, 5855, 5865, 5880, 5920, 5949, 5998, 6029, 6044, 6062, 6078, 6105, 6129, 6143, 6185, 6198 was treated with a sand-water fracturing process on November 8, 1979. The well was shut-in on November 11, 1979, an after being shut-in for eight (8) days, the Mesaverde Formation was tested on November 19, 1979, using the Pitot tube method with an after frac guage of 916 MCF/D, with an SIPC of 997 psia and an SIPT of 444 psia. The spacing unit for this well is described as the W/2 of Section 15, Township 32 North, Range 7 West, N.M.P.M., containing 320.00 acres.

The Allison Unit #31 Well, located 1465' from the South line and 810' from the West line of Section 14, Township 32 North, Range 7 West, N.M.P.M., was spudded on September 17, 1979, and completed on November 26, 1979, at a total depth of 8473'. The Dakota Formation at the intervals of 8343, 8349, 8355, 8395, 8401, 8412, 8422, 8423, 8437, 8463 was treated with a sand-water fracturing process on November 13, 1979. The well was shut-in on November 16, 1979, and after being shut-in for ten (10) days, the Dakota Formation was tested on November 26, 1979, using the Pitot tube method with an after frac guage of 646 MCF/D, with an SIPC of 1587 psia and an SIPT of 1512 psia. The spacing unit for this well is described as the W/2 of Section 14, Township 32 North, Range 7 West, N.M.P.M., containing 320.00 acres.

The Allison Unit #41 Well, located 1500' from the South line and 1600' from the West line of Section 29, Township 32 North, Range 6 West, N.M.P.M. was spudded on December 5, 1973 and completed on January 17, 1974 as a non-commercial Dakota well at a total depth of 8066'. The well was plugged

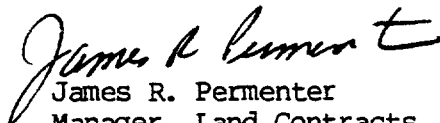
back to the Mesaverde Formation and completed on October 30, 1979, at a total depth of 6100'. The Mesaverde Formation at the intervals of 5515, 5520, 5589, 5594, 5600, 5606, 5612, 5618, 5633, 5638, 5644, 5650, 5656, 5672, 5677, 5704, 5710, 5728, 5775, 5825, 5832, 5862, 5877, 5896, 5900, 5911, 5918, 5931, 5938, 5961 was treated with a sand-water fracturing process on October 19, 1979. The well was shut-in on October 23, 1979, and after being shut in for seven (7) days, the Mesaverde Formation was tested on November 30, 1979, using the Pitot tube method with an after frac guage of 2449 MCF/D, with an SIPC of 1164 psia and an SIPT of 1164 psia. The spacing for this well is described as the W/2 of Section 29, Township 32 North, Range 6 West, N.M.P.M., containing 320.00 acres.

The Allison Unit #55 Well, located 2200' from the South line and 2330' from the West line of Section 10, Township 32 North, Range 7 West, N.M.P.M., was spudded on September 6, 1979, and completed on November 13, 1979, at a total depth of 6518'. The Mesaverde Formation at the intervals of 5738, 5748, 5752, 5757, 5775, 5791, 5879, 5919, 5923, 5968, 6028, 6034, 6040, 6046, 6060, 6066, 6072, 6078, 6084, 6090, 6096, 6102, 6108, 6114, 6128, 6145, 6160, 6177, 6187, 6213, 6244, 6261, 6292, 6328, 6340, 6359, 6377, 6397, 6407, 6340, 6359, 6377, 6397, 6407, 6430, 6433 was treated with a sand-water fracturing process on November 1, 1979. The well was shut-in on November 6, 1979, and after being shut-in for seven (7) days, the Mesaverde Formation was tested on November 13, 1979, using the Pitot tube method with an after frac guage 744 MCF/D, with an SIPC of 1152 psia and an SIPT of 667 psia. The spacing unit for this well is described as Lots 1, 2, 8, 9, 10, 11, N/2 SE/4, SE/4 SE/4, Section 10; Lots 3, 4, Section 11, Township 32 North, Range 7 West, N.M.P.M., containing 354.77 acres.

All of the above wells are located within the current boundaries of the respective Participating Area.

A copy of this letter is being sent to the working interest owners shown on the attached sheet.

Very truly yours,

  
James R. Permenter  
Manager, Land Contracts  
and Titles  
Land Department

JRP/DCH/sfg  
Allison Unit, 4.2.1

ALLISON UNIT  
Working Interest Owners

Amerada Hess Corporation (3)

Atlantic Richfield Company (3)  
Denver, Colorado

Ruth Phillips Bisiker  
(Stockholder of Phillips Drilling Corporation)

Castle, Inc.  
(Stockholder of Phillips Drilling Corporation)

Conoco, Inc.

Suzanna Phillips Kelly  
(Stockholder of Phillips Drilling Corporation)

Jane Phillips Ladoucer  
(Stockholder of Phillips Drilling Corporation)

H. H. Phillips  
(Stockholder of Phillips Drilling Corporation)

H. H. Phillips, Jr.

Winnie A. Phillips  
(Stockholder of Phillips Drilling Corporation)

Tenneco Oil Company



# United States Department of the Interior

GEOLOGICAL SURVEY

P. O. Box 26124  
Albuquerque, New Mexico 87125

570 261 79

El Paso Natural Gas Company  
Attention: Mr. D. N. Canfield  
P. O. Box 1492  
El Paso, Texas 79978

Wb. 224

Gentlemen:

On this date, your 1979 plan of development and operation for the Allison unit area, San Juan County, New Mexico, wherein you propose to drill four Mesaverde wells and one Dakota well was approved. Such approval is subject to like approval by the appropriate State officials.

Three approved copies are enclosed.

Sincerely yours,

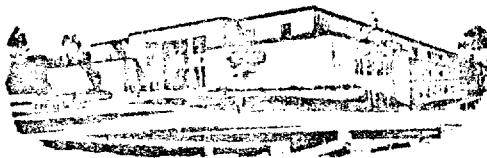
ACTING Oil and Gas Supervisor, SRMA

Enclosures (3)

cc: NMOCD, Santa Fe (ltr. only) ← This Copy for  
Com. Pub. Lands, Santa Fe (ltr. only)

State of New Mexico

2-14-79



Commissioner of Public Lands

February 13, 1979

ALEX J. ARMIJO  
COMMISSIONER

P. O. BOX 1148  
SANTA FE, NEW MEXICO

El Paso Natural Gas Company  
P. O. Box 1492  
El Paso, Texas 79978

No. 224

Re: Allison Unit  
San Juan County, New Mexico  
and La Plata and Archuleta Counties,  
Colorado  
1979 DRILLING PROGRAM

ATTENTION: Mr. D. N. Canfield

Gentlemen:

The Commissioner of Public Lands has this date approved your 1979 Drilling Program for the Allison Unit, San Juan County, New Mexico and La Plata and Archuleta Counties, Colorado. Such plan calls for the drilling of four Mesaverde wells and one Dakota well. Our approval is subject to like approval by the United States Geological Survey and the New Mexico Oil Conservation Division.

Enclosed is one approved copy for your files.

Please remit a Three (\$3.00) Dollar filing fee.

Very truly yours,

ALEX J. ARMIJO  
COMMISSIONER OF PUBLIC LANDS

BY:  
RAY D. GRAHAM, Director  
Oil and Gas Division

AJA/RDG/s  
encls.  
cc:

OCD-Santa Fe, New Mexico ✓  
USGS-Roswell, New Mexico  
USGS-Albuquerque, New Mexico

OIL CONSERVATION DIVISION

P. O. BOX 2088

SANTA FE, NEW MEXICO 87501

February 6, 1979

El Paso Natural Gas Company  
P. O. Box 1492  
El Paso, Texas 79978

Attention: D. N. Canfield

Re: Case No. 224  
Allison Unit  
1979 Drilling Program

Gentlemen:

We hereby approve the 1979 Drilling Program for the Allison Unit, San Juan County, New Mexico, and La Plata and Archuleta Counties, Colorado, subject to like approval by the United States Geological Survey and the Commissioner of Public Lands.

One approved copy of the Drilling Program is returned herewith.

Yours very truly,

JOE D. RAMEY  
Director

JDR/LT/fd  
enc.

cc: U.S.G.S. - Roswell  
Commissioner of Public Lands

C  
O  
P  
Y

**El Paso** NATURAL GAS  
COMPANY

P. O. BOX 1492  
EL PASO, TEXAS 79978  
PHONE: 915-543-2600

January 25, 1979

United States Geological Survey  
Drawer 1857  
Roswell, New Mexico 88201

Commissioner of Public Lands  
State of New Mexico  
Post Office Box 1148  
Santa Fe, New Mexico 87501

Oil Conservation Commission  
State of New Mexico  
Post Office Box 2088  
Santa Fe, New Mexico 87501

*Approved  
Ms. 224*

Re: Allison Unit I Section No. 752  
San Juan County, New Mexico  
and La Plata and Archuleta  
Counties, Colorado  
1979 DRILLING PROGRAM

Gentlemen:

By letter dated May 3, 1978, El Paso Natural Gas Company, as Unit Operator of the Allison Unit, filed a Drilling Program covering the subject Unit for the calendar year 1978. This program provided for the drilling of two (2) Mesaverde wells (#51, #53). Each of these two wells is being evaluated to determine whether or not such will be commercial, thereby creating an expansion of the Mesaverde Participating Area.

Pursuant to Section 9 of the Allison Unit Agreement, El Paso Natural Gas Company, as Unit Operator, is submitting this Drilling Program providing for the drilling of the following wells during the calendar year 1979.

San Juan County, New Mexico

|      |   |           |
|------|---|-----------|
| #10A | W/2 Section 20, T-32-N, R-6-W                           | Mesaverde |
| #11A | E/2 Section 23, T-32-N, R-7-W                           | Mesaverde |
| #16A | W/2 Section 15, T-32-N, R-7-W                           | Mesaverde |
| #31  | W/2 Section 14, T-32-N, R-7-W                           | Dakota    |
| #55  | E/2 Section 10, Lots 3, 4,<br>Section 11, T-32-N, R-7-W | Mesaverde |

All working interest owners have been contacted, and this Drilling Program reflects their desires. El Paso Natural Gas Company, as Unit Operator, and the working interest owners believe that all current obligations have been satisfied.




El Paso Natural Gas Company, as Unit Operator, plans to drill any offset wells required to prevent drainage of unitized substances and any other wells deemed necessary or desirable by the Unit Operator and the working interest owners.

If this Drilling Program is acceptable, please signify your approval as required under Section 10 of the Unit Agreement in the space provided on the attached sheet and return an approved copy to El Paso Natural Gas Company.

Copies of this letter are being sent to the working interest owners shown on the attached sheet.

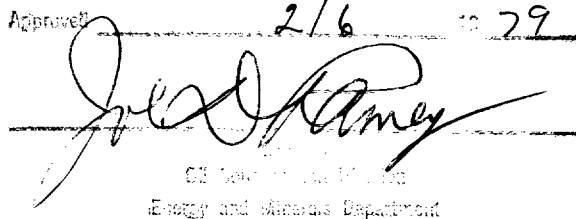
Very truly yours,



D. N. Canfield  
Director of Land  
Energy Resource Development

DNC/JLM/sfg  
Attachments  
Allison Unit 3.0

cc: Mr. Antonio Martinez, Executive Director  
New Mexico Oil and Gas Accounting Commission  
P. O. Box 2308  
Santa Fe, New Mexico 87501

Approved 2/6 1979  
  
Gerald Ramey  
Oil and Minerals Division  
Energy and Minerals Department

ALLISON UNIT  
Working Interest Owners

Amerada Hess Corporation (3)

Atlantic Richfield Company (3)  
Denver, Colorado

Ruth Phillips Bisiker  
(Stockholder of Phillips Drilling Corporation)

Castle, Inc.  
(Stockholder of Phillips Drilling Corporation)

Continental Oil Company

Suzanna Phillips Kelly  
(Stockholder of Phillips Drilling Corporation)

Jane Phillips Ladoucer  
(Stockholder of Phillips Drilling Corporation)

H. H. Phillips  
(Stockholder of Phillips Drilling Corporation)

H. H. Phillips, Jr.

Winnie A. Phillips  
(Stockholder of Phillips Drilling Corporation)

Tenneco Oil Company

December 20, 1978

United States Geological Survey  
Drawer 1857  
Roswell, New Mexico 88201

Commissioner of Public Lands  
State of New Mexico  
Post Office Box 1148  
Santa Fe, New Mexico 87501

Oil Conservation Commission  
State of New Mexico  
Post Office Box 2088  
Santa Fe, New Mexico 87501

*No. 224*

Re: Allison Unit  
FOURTEENTH EXPANDED PARTICIPATING  
AREA, Mesaverde Formation  
San Juan County, New Mexico  
and La Plata and Archuleta  
Counties, Colorado  
Effective May 1, 1978

Gentlemen:

The Fourteenth Expansion of the Mesaverde Formation in the referenced unit was approved as follows:

United States Geological Survey  
Commissioner of Public Lands  
Oil Conservation Commission

December 5, 1978  
August 31, 1978  
September 1, 1978

The working interest owners have been notified of such.

Very truly yours,

*Jeanne L. Morrison*  
Jeanne L. Morrison  
Associate Landman  
Land Department  
Energy Resource Development

JLM/sfg  
Allison Unit, 4.2, 5.0

December 20, 1978

United States Geological Survey  
Drawer 1857  
Roswell, New Mexico 88201

Commissioner of Public Lands  
State of New Mexico  
Post Office Box 1148  
Santa Fe, New Mexico 87501

Oil Conservation Commission  
State of New Mexico  
Post Office Box 2088  
Santa Fe, New Mexico 87501

Re: Allison Unit  
FOURTEENTH EXPANDED PARTICIPATING  
AREA, Mesaverde Formation  
San Juan County, New Mexico  
and La Plata and Archuleta  
Counties, Colorado  
Effective May 1, 1978

Gentlemen:

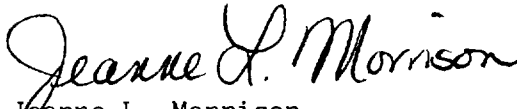
The Fourteenth Expansion of the Mesaverde Formation in the referenced unit was approved as follows:

United States Geological Survey  
Commissioner of Public Lands  
Oil Conservation Commission

December 5, 1978  
August 31, 1978  
September 1, 1978

The working interest owners have been notified of such.

Very truly yours,



Jeanne L. Morrison  
Associate Landman  
Land Department  
Energy Resource Development

JLM/sfg  
Allison Unit, 4.2, 5.0



# United States Department of the Interior

## GEOLOGICAL SURVEY

P. O. Box 26124  
Albuquerque, New Mexico 87125

DEC 1

El Paso Natural Gas Company  
Attention: Mr. James R. Permenter  
P. O. Box 1492  
El Paso, Texas 79978

No. 224

Gentlemen:

Your application of August 23, 1978, requesting approval of the Fourteenth Revision of the Mesaverde participating area, Allison Unit Agreement, San Juan County, New Mexico, La Plata and Archuleta Counties, Colorado, I-Sec. No. 752, was approved on this date by the Oil and Gas Supervisor, SRMA, U. S. Geological Survey, effective as of May 1, 1978.

The fourteenth revision adds 448.96 acres described as all of fractional sec. 20, T. 32 N., R. 6 W., La Plata County, Colorado, which enlarges the total participating area to 11,206.33 acres. This revision is based on the information contributed by unit well No. 50 located 1,800 feet from the North line and 1,190 feet from the West line of sec. 20, completed on April 14, 1978, for an after frac guage of 2,727 MCF of gas per day from the Mesaverde formation.

Copies of the approved application are being distributed to the appropriate Federal offices and two approved copies are returned herewith. You are requested to furnish the State of New Mexico and other interested parties with appropriate evidence of this approval.

Sincerely yours,

*[Signature]*

Oil and Gas Supervisor, SRMA

Enclosures (2)

cc: BLM, Santa Fe (ltr. only)  
Com. Pub. Lands, Santa Fe (ltr. only)  
NMOCD, Santa Fe (ltr. only)



# United States Department of the Interior

## GEOLOGICAL SURVEY

P. O. Box 26124  
Albuquerque, New Mexico 87125

SEP 26 1978

El Paso Natural Gas Company  
Attention: Mr. James R. Permenter  
P. O. Box 1492  
El Paso, Texas 79978

no. 224

Gentlemen:

Your application of June 10, 1978, requesting approval of the eleventh revision of the Dakota participating area for the Allison unit agreement, San Juan County, New Mexico and La Plata and Archuleta Counties, Colorado, I-Sec. No. 752, was approved by the Oil and Gas Supervisor, SRMA, U. S. Geological Survey, on this date and is effective as of May 1, 1978.

Such revision adds 448.96 acres described as all of fractional sec. 20, T. 32 N., R. 6 W., N.M.P.M., La Plata County, Colorado, which enlarges the Dakota participating area to 8,262.17 acres and is based on the completion of unit well No. 59 located in the NW of said sec. 20. Such well was completed April 6, 1978, from the Dakota interval 7,796 to 7,907 feet for an after frac Pitot tube gauge of 979 MCF of gas per day.

Copies of the approved application are being distributed to the proper Federal offices and three approved copies are returned herewith. You are requested to furnish all interested parties with appropriate evidence of this approval.

Sincerely yours,

(ORIG. SGD.) JAMES W. SUTHERLAND

Oil and Gas Supervisor, SRMA

Enclosures (3)

cc:

BLM, Denver (ltr. only)  
Colorado Oil & Gas Com. (ltr. only)  
NMOCD, Santa Fe (ltr. only) ~~////~~ This Copy for  
Com. Pub. Lands, Santa Fe (ltr. only)

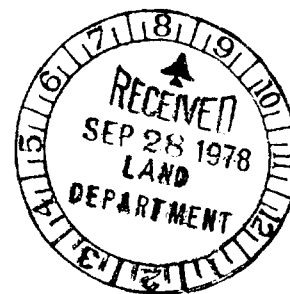


# United States Department of the Interior

## GEOLOGICAL SURVEY

P. O. Box 26124  
Albuquerque, New Mexico 87125

SEP 26 1978



El Paso Natural Gas Company  
Attention: Mr. James R. Permenter  
P. O. Box 1492  
El Paso, Texas 79978

*no. 224*

Gentlemen:

Your application of June 10, 1978, requesting approval of the eleventh revision of the Dakota participating area for the Allison unit agreement, San Juan County, New Mexico and La Plata and Archuleta Counties, Colorado, I-Sec. No. 752, was approved by the Oil and Gas Supervisor, SRMA, U. S. Geological Survey, on this date and is effective as of May 1, 1978.

Such revision adds 448.96 acres described as all of fractional sec. 20, T. 32 N., R. 6 W., N.M.P.M., La Plata County, Colorado, which enlarges the Dakota participating area to 8,262.17 acres and is based on the completion of unit well No. 59 located in the NW $\frac{1}{4}$  of said sec. 20. Such well was completed April 6, 1978, from the Dakota interval 7,796 to 7,907 feet for an after frac Pitot tube gauge of 979 MCF of gas per day.

Copies of the approved application are being distributed to the proper Federal offices and three approved copies are returned herewith. You are requested to furnish all interested parties with appropriate evidence of this approval.

Sincerely yours,

JAMES W. SUTHERLAND  
Oil and Gas Supervisor, SRMA

Enclosures (3)

October 2, 1978

Regional Oil & Gas Supervisor  
United States Geological Survey  
Drawer 1857  
Roswell, New Mexico 88201

Commissioner of Public Lands  
State of New Mexico  
Post Office Box 1148  
Santa Fe, New Mexico 87501

Oil Conservation Commission ✓  
State of New Mexico  
Post Office Box 2088  
Santa Fe, New Mexico 87501

*No 224*

Re: Allison Unit I Sec. No. 752  
San Juan County, New Mexico  
La Plata and Archuleta  
Counties, Colorado  
ELEVENTH EXPANDED PARTICIPATING  
AREA,  
Dakota Formation  
Effective May 1, 1978

Gentlemen:

The referenced expansion for the Dakota formation of the Allison Unit was approved by the regulatory agencies as follows:

1. United States Geological Survey - September 26, 1978
2. Commissioner of Public Lands - July 19, 1978
3. Oil Conservation Commission - July 31, 1978

A copy of this letter is being sent to the Allison Unit Area working interest owners.

Very truly yours,

*Jeanne L. Morrison*  
Jeanne L. Morrison  
Associate Landman  
Land Department  
Energy Resource Development

JLM/sfg  
Allison Unit 4.3, 5.0



ALLISON UNIT  
Working Interest Owners

Amerada Hess Corporation (3)

Atlantic Richfield Company (3)  
Denver, Colorado

Ruth Phillips Bisiker  
(Stockholder of Phillips Drilling Corporation)

Castle, Inc.  
(Stockholder of Phillips Drilling Corporation)

Continental Oil Company

Suzanna Phillips Kelly  
(Stockholder of Phillips Drilling Corporation)

Jane Phillips Ladoucer  
(Stockholder of Phillips Drilling Corporation)

H. H. Phillips  
(Stockholder of Phillips Drilling Corporation)

H. H. Phillips, Jr.

Winnie A. Phillips  
(Stockholder of Phillips Drilling Corporation)

Tenneco Oil Company

OIL CONSERVATION DIVISION

P. O. BOX 2088

SANTA FE, NEW MEXICO 87501

September 1, 1978

El Paso Natural Gas Company  
P. O. Box 1492  
El Paso, Texas 79978

Attention: James R. Permenter

Re: Case No. 224  
Allison Unit  
Fourteenth Expanded  
Participating Area,  
Mesaverde Formation

Gentlemen:

We hereby approve the Fourteenth Expanded Participating Area for the Mesaverde Formation for the Allison Unit, San Juan County, New Mexico, La Plata and Archuleta Counties, Colorado, subject to like approval by the United States Geological Survey and the Commissioner of Public Lands.

Two approved copies of the Expanded Participating Area are returned herewith.

Very truly yours,

JOE D. RAMEY  
Director

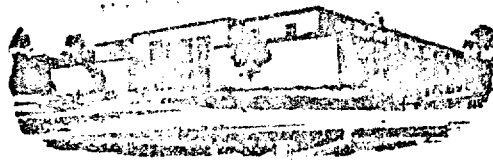
JDR/LT/fd  
enc.

cc: U.S.G.S. - Roswell  
Commissioner of Public Lands

C  
O  
P  
Y



# State of New Mexico



## Commissioner of Public Lands

August 31, 1978

PHIL R. LUCERO  
COMMISSIONER

P. O. BOX 1148  
SANTA FE, NEW MEXICO 87501

El Paso Natural Gas Company  
P. O. Box 1402  
El Paso, Texas 79978

*No. 224*

Re: Allison Unit  
San Juan County, New Mexico  
La Plata and Archuleta  
Counties, Colorado  
FOURTEENTH EXPANDED PARTICIPATING  
AREA, Mesaverde Formation  
Effective May 1, 1978

ATTENTION: Mr. James R. Permenter

Gentlemen:

The Commissioner of Public Lands has this date approved your Fourteenth Expanded Participating Area for the Mesaverde Formation, for the Allison Unit effective May 1, 1978. Such approval is subject to like approval by the United States Geological Survey and the New Mexico Oil Conservation Division.

Enclosed is one approved copy for your files.

Please advise this office when the USGS gives their approval so that we may finish processing same.

Very truly yours,

PHIL R. LUCERO  
COMMISSIONER OF PUBLIC LANDS

BY:  
RAY D. GRAHAM, Director  
Oil and Gas Division

PRL/RDG/s  
encl.  
cc:

OCD-Santa Fe, New Mexico  
USGS-Roswell, New Mexico  
USGS-Albuquerque, New Mexico

RECEIVED

SEP 1 1978

Oil Conservation Commission

**El Paso** NATURAL GAS  
COMPANY

P. O. BOX 1492  
EL PASO, TEXAS 79978  
PHONE: 915-543-2600

August 28, 1978

United States Geological Survey  
Drawer 1857  
Roswell, New Mexico 88201

Commissioner of Public Lands  
State of New Mexico  
Post Office Box 1148  
Santa Fe, New Mexico 87501

Oil Conservation Commission ✓  
State of New Mexico  
Post Office Box 2088  
Santa Fe, New Mexico 87501

AUG 29 1978

*Approved*

Re: Allison Unit I Sec. No. 752  
San Juan County, New Mexico  
La Plata and Archuleta  
Counties, Colorado  
FOURTEENTH EXPANDED  
PARTICIPATING AREA,  
Mesaverde Formation  
Effective May 1, 1978

Gentlemen:

Enclosed are the appropriate instruments concerning the referenced expansion which El Paso Natural Gas Company is submitting for your approval. Incomplete copies were inadvertently sent to you last week; please substitute the enclosures herein for such incomplete copies.

Should you need additional information, let me know. We regret any inconvenience this may have caused you.

Very truly yours,

*Jeanne D. Lunsford*

Jeanne D. Lunsford  
Associate Landman  
Land Department  
Energy Resource Development

JDL/sfg  
Allison Unit 4.3

**El Paso** NATURAL GAS  
COMPANY

P. O. BOX 1492  
EL PASO, TEXAS 79978  
PHONE: 915-543-2600

August 23, 1978

Regional Oil & Gas Supervisor  
United States Geological Survey  
Drawer 1857  
Roswell, New Mexico 88201

Commissioner of Public Lands  
State of New Mexico  
Post Office Box 1148  
Santa Fe, New Mexico 87501

Oil Conservation Commission  
State of New Mexico  
Post Office Box 2088  
Santa Fe, New Mexico 87501

*No. 224*

Re: Allison Unit I Sec. No. 752  
San Juan County, New Mexico  
La Plata and Archuleta  
Counties, Colorado  
FOURTEENTH EXPANDED PARTICIPATING  
AREA, Mesaverde Formation  
Effective May 1, 1978

Gentlemen:

Pursuant to Section 10 of the Allison Unit Agreement, I Sec. No. 752, approved August 22, 1950, El Paso Natural Gas Company, as Unit Operator, submits for your approval the Mesaverde Expanded Participating Area for the Mesaverde Formation, Allison Unit, which includes in addition to the lands previously admitted to the Mesaverde Participating Area, the following selection of lands estimated to be productive in paying quantities from the Mesaverde Formation:

Township 32 North, Range 6 West, La Plata County, Colorado  
Section 20: All  
Containing 448.96 acres, more or less

The lands described above are proven to be productive by the following:

The Allison Unit #59 (MD) a dual completion well located 1800' from the North line and 1190' from the West line of Section 20, Township 32 North, Range 6 West, N.M.P.M., was spudded on October 8, 1977, and completed on April 14, 1978, at a total depth of 7937'. The Mesaverde Formation at the intervals of 5390', 5412', 5430', 5440', 5501', 5508', 5516', 5561', 5567', 5573', 5581', 5587', 5593', 5614', 5620', 5626', 5640', 5652',

5660', 5677', 5700', 5744', 5855', 5896', and 5906', was treated with a sand-water fracturing process on December 13, 1977. The well was shut-in on March 29, 1978, and after being shut-in for fifteen (15) days, the Mesaverde Formation was tested on April 14, 1978, using the Pitot tube method with an after frac guage of 2727 MCF/D, with an SIPC of 1052 psia and an SIPT of 892 psia. The spacing unit for this well is described as all of Section 20, Township 32 North, Range 6 West, N.M.P.M., containing 448.96 acres.

Filed in support of this expansion are the following listed Exhibits which are made a part hereof:

EXHIBIT "A"

Ownership map reflecting the boundaries of the Allison Unit and the proposed Fourteenth Expanded Mesaverde Participating Area.

EXHIBIT "B"

Geological Report on the Fourteenth Expanded Mesaverde Participating Area.

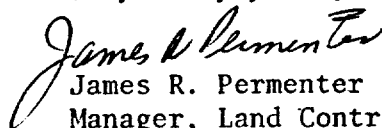
EXHIBIT "C"

Structural contour and Isopach map.

Attached is Schedule XIV showing the entire Mesaverde Participating Area for the Allison Unit, reflecting the Fourteenth Expansion. Schedule XIV describes the Expanded Participating Area, shows the percentage of unitized substances allocated to each unitized tract, and the exact breakdown of percentage allocated to each tract according to the various ownership in said tract. Inasmuch as Section 10 of the Unit Agreement provides that, "The effective date of any revision shall be the first of the month following the date of first authentic knowledge or information on which such revision is predicated, unless a more appropriate effective date is specified in the schedule", this Fourteenth Expanded Mesaverde Participating Area will be effective May 1, 1978. If this Fourteenth Expanded Mesaverde Participating Area meets with your approval, please indicate such approval in the space provided on the attached page and return an approved copy for our files.

Copies of this letter and schedule are being sent to the working interest owners shown on the attached sheet.

Very truly yours,



James R. Permenter  
Manager, Land Contracts  
and Titles  
Land Department  
Energy Resource Development

JRP/DM/sfg


Allison Unit 4.3

APPROVED: \_\_\_\_\_  
Regional Oil & Gas Supervisor  
United States Geological Survey  
Subject to like approval by the  
Commissioner of Public Lands and  
the Oil Conservation Commission

DATE: \_\_\_\_\_

APPROVED: \_\_\_\_\_  
Commissioner of Public Lands  
Subject to like approval by the  
United States Geological Survey  
and the Oil Conservation Commission

DATE: \_\_\_\_\_

APPROVED:  \_\_\_\_\_  
Oil Conservation Commission  
Subject to like approval by the  
United States Geological Survey  
and the Commissioner of Public Lands

DATE: 9/5/78

The foregoing approvals are for the Fourteenth Expanded Participating Area for the Mesaverde Formation, effective May 1, 1978, under the Allison Unit Area, I Sec. No. 752, San Juan County, New Mexico, La Plata and Archuleta Counties, Colorado.

ALLISON UNIT  
Working Interest Owners

Amerada Hess Corporation (3)

Atlantic Richfield Company (3)  
Denver, Colorado

Ruth Phillips Bisiker  
(Stockholder of Phillips Drilling Corporation)

Castle, Inc.  
(Stockholder of Phillips Drilling Corporation)

Continental Oil Company

Suzanna Phillips Kelly  
(Stockholder of Phillips Drilling Corporation)

Jane Phillips Ladoucer  
(Stockholder of Phillips Drilling Corporation)

H. H. Phillips  
(Stockholder of Phillips Drilling Corporation)

H. H. Phillips, Jr.

Winnie A. Phillips  
(Stockholder of Phillips Drilling Corporation)

Tenneco Oil Company



OIL CONSERVATION DIVISION

P. O. BOX 2088

SANTA FE, NEW MEXICO 87501

July 31, 1978

El Paso Natural Gas Company  
P. O. Box 1492  
El Paso, Texas 79978

Attention: James R. Permenter

Re: Case No. 224  
Allison Unit  
Eleventh Expanded Participating  
Area, Bakota Formation

Gentlemen:

We hereby approve the Eleventh Expanded Participating Area for the Dakota formation for the Allison Unit, San Juan County, New Mexico, and La Plata and Archuleta Counties, Colorado, subject to like approval by the United States Geological Survey and the Commissioner of Public Lands.

One approved copy of the Expanded Participating Area is returned herewith.

This approval is given as your unit agreement requires. However, it should be noted that the lands in question are in Colorado and outside the jurisdiction of this Division.

Very truly yours,

JOE D. RAMEY  
Director

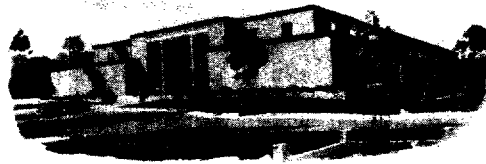
JDR/LT/fd  
enc.

cc: U.S.G.S. - Roswell  
Commissioner of Public Lands

C  
O  
P  
Y

100-21  
100-22

State of New Mexico



Commissioner of Public Lands

PHIL R. LUCERO  
COMMISSIONER

July 19, 1978

P. O. BOX 1148  
SANTA FE, NEW MEXICO 87501

El Paso Natural Gas Company  
P. O. Box 1492  
El Paso, Texas 79978

no. 224

Re: Allison Unit  
San Juan County, New Mexico  
La Plata and Archuleta Counties,  
Colorado  
ELEVENTH EXPANDED PARTICIPATING  
AREA, Dakota Formation  
Effective May 1, 1978

ATTENTION: Mr. James R. Fermenter

Gentlemen:

The Commissioner of Public Lands has this date approved the Eleventh Expanded Participating Area, Dakota Formation for the Allison Unit, San Juan County, New Mexico and La Plata and Archuleta Counties, Colorado.

Our approval is subject to like approval by the United States Geological Survey and the New Mexico Oil Conservation Division.

Enclosed is one approved copy for your files.

Very truly yours,

PHIL R. LUCERO  
COMMISSIONER OF PUBLIC LANDS

BY:  
RAY D. GRAHAM, Director  
Oil and Gas Division

FRL/RDG/s

encl.

cc: OGD-Santa Fe, New Mexico ✓  
USGS-Roswell, New Mexico  
USGS-Albuquerque, New Mexico

July 10, 1978

Regional Oil & Gas Supervisor  
United States Geological Survey  
Drawer 1857  
Roswell, New Mexico 88201

Commissioner of Public Lands  
State of New Mexico  
Post Office Box 1148  
Santa Fe, New Mexico 87501

Oil Conservation Commission  
State of New Mexico  
Post Office Box 2088  
Santa Fe, New Mexico 87501



*No. 224*

Re: Allison Unit I Sec. No. 752  
San Juan County, New Mexico  
La Plata and Archuleta  
Counties, Colorado  
ELEVENTH EXPANDED PARTICIPATING  
AREA, Dakota Formation  
Effective May 1, 1978

Gentlemen:

Pursuant to Section 10 of the Allison Unit Agreement, I Sec. No. 752, approved August 22, 1950, El Paso Natural Gas Company, as Unit Operator, submits for your approval the Eleventh Expanded Participating Area for the Dakota Formation, Allison Unit, which includes in addition to the lands previously admitted to the Dakota Participating Area, the following selection of lands estimated to be productive in paying quantities from the Dakota Formation:

→ Township 32 North, Range 6 West, La Plata County, Colorado  
Section 20: All  
Containing 448.96 acres, more or less

The lands described above are proven to be productive by the following:

The Allison Unit #59 (MD) Well, a dual completion well located 1800' from the North line and 1190' from the West line of Section 20, Township 32 North, Range 6 West, N.M.P.M., was spudded on October 8, 1977, and completed on April 14, 1978, at a total depth of 7937'. The Dakota Formation at the

intervals of 7796', 7800', 7806', 7810', 7848', 7855', 7862', 7869', 7876', 7907', was treated with a sand-water fracturing process on December 13, 1977. The well was shut-in on March 29, 1978, and after being shut-in for eight (8) days, the Dakota Formation was tested on April 6, 1978, using the Pitot tube method with an after frac guage of 957 MCF/D, with an SIPT of 1372 psia. The spacing unit for this well is described as all of Section 20, Township 32 North, Range 6 West, N.M.P.M., containing 448.96 acres.

Filed in support of this expansion are the following listed Exhibits which are made a part hereof:

EXHIBIT "A"

Ownership map reflecting the boundaries of the Allison Unit and the proposed Eleventh Expanded Dakota Participating Area.

EXHIBIT "B"

Geological Report on the Eleventh Expanded Dakota Participating Area.

EXHIBIT "C"

Structural contour and Isopach maps.

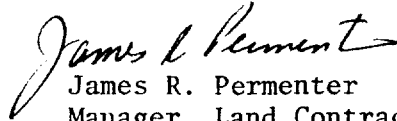
Attached is Schedule XI showing the entire Dakota Participating Area for the Allison Unit, reflecting the Eleventh Expansion for the Dakota Formation of the Allison Unit Area. Schedule XI describes the Expanded Participating Area, shows the percentage of unitized substances allocated to each unitized tract, and the exact breakdown of percentage allocated to each tract according to the various ownership in said tract. Inasmuch as Section 10 of the Unit Agreement provides that, "The effective date of any revision shall be the first of the month following the date of first authentic knowledge or information on which such revision is predicated, unless a more appropriate effective date is specified in the schedule", this Eleventh Expanded Dakota Participating Area will be effective May 1, 1978. If this Eleventh Expanded Dakota Participating Area meets with your approval, please indicate such approval in the space provided on the attached page and return an approved copy for our files.

The Allison Unit #59 (MD) Well is a dual completion well, having been completed in both the Dakota and Mesaverde Formations, and an expansion of the Mesaverde Participating Area is being separately made for submission to you for approval of the Fourteenth Expanded Participating Area of the Mesaverde Formation.

July 10, 1978  
Page Three

Copies of this letter and schedule are being sent to the working interest owners shown on the attached sheet.

Very truly yours,

A handwritten signature in cursive script, reading "James R. Permenter".

James R. Permenter  
Manager, Land Contracts  
and Titles  
Land Department  
Energy Resource Development

JRP/DM/sfg

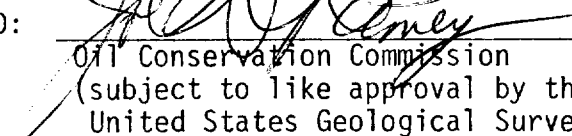
Allison Unit 4.3

APPROVED: \_\_\_\_\_  
Regional Oil & Gas Supervisor  
United States Geological Survey  
(Subject to like approval by the  
Commissioner of Public Lands and  
the Oil Conservation Commission)

DATED: \_\_\_\_\_

APPROVED: \_\_\_\_\_  
Commissioner of Public Lands  
(subject to like approval by the  
United States Geological Survey  
& the Oil Conservation Commission)

DATED: \_\_\_\_\_

APPROVED:  \_\_\_\_\_  
Oil Conservation Commission  
(subject to like approval by the  
United States Geological Survey  
& the Commissioner of Public Lands)

DATED: 7/31/78

The foregoing approvals are for the Eleventh Expanded Participating Area for the Dakota Formation, effective May 1, 1978, under the Allison Unit Area, I Sec. No. 752, San Juan County, New Mexico, La Plata and Archuleta Counties, Colorado.

ALLISON UNIT  
Working Interest Owners

Amerada Hess Corporation (3)

Atlantic Richfield Company (3)  
Denver, Colorado

Ruth Phillips Bisiker  
(Stockholder of Phillips Drilling Corporation)

Castle, Inc.  
(Stockholder of Phillips Drilling Corporation)

Continental Oil Company

Suzanna Phillips Kelly  
(Stockholder of Phillips Drilling Corporation)

Jane Phillips Ladoucer  
(Stockholder of Phillips Drilling Corporation)

H. H. Phillips  
(Stockholder of Phillips Drilling Corporation)

H. H. Phillips, Jr.

Winnie A. Phillips  
(Stockholder of Phillips Drilling Corporation)

Tenneco Oil Company

SCHEDULE XI  
11TH EXPANDED PARTICIPATING AREA FOR THE DAKOTA FORMATION  
ALLISON UNIT AREA

| SERIAL NUMBER            | DESCRIPTION                                | NUMBER OF ACRES                  | DRILLING BLOCK           |                          | PERCENTAGE COMMITTED | PRESENT ACTUAL PARTICIPATION |           |
|--------------------------|--|----------------------------------|--------------------------|--------------------------|----------------------|------------------------------|-----------|
|                          |  |                                  | OWNERSHIP                | PERCENTAGE               |                      |                              |           |
| F 078459-B               | <u>T-32-N, R-7-W</u>                       | 1,874.32                         | <u>TRACT 1</u>           |                          |                      |                              |           |
|                          | Sec. 9: <u>Lots 1, 2,3, SE/4, E/2 SW/4</u> |                                  | Royalty;                 | 12.50%                   | 12.50%               | 22.713056%                   |           |
|                          |  |                                  | Working Interest:        |                          |                      |                              |           |
|                          | Sec. 10: <u>Lots 1,2, 3,4, S/2</u>         |                                  | El Paso Natural Gas Co.; | 41.00%                   | 41.00%               |                              |           |
|                          |  |                                  | Amerada Petroleum Corp.; | 41.00%                   | 41.00%               |                              |           |
|                          |  |                                  | ORRI;                    | 5.50%                    | 5.50%                |                              |           |
|                          | Sec. 11: <u>Lots 2,3, 4, N/2 SW/4</u>      |                                  | TOTAL                    | <u>100.00%</u>           | <u>100.00%</u>       |                              |           |
|                          | Sec. 14: <u>SW/4 NW/4, SW/4 NE/4, S/2</u>  |                                  |                          |                          |                      |                              |           |
|                          | Sec. 15: <u>All</u>                        |                                  |                          |                          |                      |                              |           |
|                          | F 078483-A                                 | <u>T-32-N, R-7-W</u>             | 679.31                   | <u>TRACT 2</u>           |                      |                              |           |
|                          |  | Sec. 11: <u>Lots 1, E/2 SE/4</u> |                          | Royalty;                 | 12.50%               | 12.50%                       | 8.231895% |
|                          |  |                                  |                          | Working Interest:        |                      |                              |           |
|                          |  | Sec. 12: <u>Lot 4, W/2 SW/4</u>  |                          | El Paso Natural Gas Co.; | 41.00%               | 41.00%                       |           |
|                          |  |                                  |                          | Amerada Petroleum Corp.; | 41.00%               | 41.00%                       |           |
|                          |  |                                  |                          | ORRI;                    | 5.50%                | 5.50%                        |           |
| Sec. 13: <u>W/2 NW/4</u> |  |                                  | TOTAL                    | <u>100.00%</u>           | <u>100.00%</u>       |                              |           |
| Sec. 14: <u>E/2 NE/4</u> |  |                                  |                          |                          |                      |                              |           |
| Sec. 23: <u>E/2</u>      |  |                                  |                          |                          |                      |                              |           |
| F 080067-A               |  | <u>T-32-N, R-7-W</u>             | 160.00                   | <u>TRACT 3</u>           |                      |                              |           |
|                          |  | Sec. 24: <u>NW/4</u>             |                          | Royalty;                 | 12.50%               | 12.50%                       | 1.938884% |
|                          |  |                                  |                          | Working Interest:        |                      |                              |           |
|                          |  |                                  |                          | El Paso Natural Gas Co.; | 41.50%               | 41.50%                       |           |
|                          |  |                                  |                          | Amerada Petroleum Corp.; | 41.50%               | 41.50%                       |           |
|                          |  |                                  |                          | ORRI;                    | 4.50%                | 4.50%                        |           |
|                          |  |                                  | TOTAL                    | <u>100.00%</u>           | <u>100.00%</u>       |                              |           |

Effective May 1, 1978



SCHEDULE XI

| SERIAL NUMBER | DESCRIPTION   | NUMBER<br>OF ACRES | DRILLING BLOCK |                | PERCENTAGE<br>COMMITTED | PRESENT ACTUAL<br>PARTICIPATION |
|---------------|---|--------------------|----------------|----------------|-------------------------|---------------------------------|
|               |   |                    | OWNERSHIP      | PERCENTAGE     |                         |                                 |
| 3 081155      | T-32-N, R-6-W<br>Sec. 19: Lots 2, 3,<br>4, NE/4 SW/4,<br>S/2 SE/4, NE/4<br>SE/4 | 277.33             | TRACT 4        |                |                         |                                 |
|               | Royalty;  |                    |                | 12.50%         | 12.50%                  | 3.360691%                       |
|               | Working Interest:   |                    |                |                |                         |                                 |
|               | El Paso Natural Gas Co.;  |                    |                | 41.50%         | 41.50%                  |                                 |
|               | Amerada Petroleum Corp.;  |                    |                | 41.50%         | 41.50%                  |                                 |
|               | ORRI;   |                    |                | 4.50%          | 4.50%                   |                                 |
|               | TOTAL   |                    |                | <u>100.00%</u> | <u>100.00%</u>          |                                 |
| 4 01745       | T-32-N, R-7-W<br>Sec. 25: S/2 NE/4  | 80.00              | TRACT 5        |                |                         |                                 |
|               | Royalty;  |                    |                | 12.50%         | 12.50%                  | .969442%                        |
|               | Working Interest:   |                    |                |                |                         |                                 |
|               | El Paso Natural Gas Co.;  |                    |                | 43.75%         | 43.75%                  |                                 |
|               | H. H. Phillips, Jr., et al  |                    |                | 43.75%         | 43.75%                  |                                 |
|               | ORRI;   |                    |                | 0.00%          | 0.00%                   |                                 |
|               | TOTAL   |                    |                | <u>100.00%</u> | <u>100.00%</u>          |                                 |
| 1 04206       | T-32-N, R-7-W<br>Sec. 23: NW/4  | 160.00             | TRACT 6        |                |                         |                                 |
|               | Royalty;  |                    |                | 12.50%         | 12.50%                  | 1.938884%                       |
|               | Working Interest:   |                    |                |                |                         |                                 |
|               | El Paso Natural Gas Co.;  |                    |                | 41.00%         | 41.00%                  |                                 |
|               | Amerada Petroleum Corp.;  |                    |                | 41.00%         | 41.00%                  |                                 |
|               | ORRI;   |                    |                | 5.50%          | 5.50%                   |                                 |
|               | TOTAL   |                    |                | <u>100.00%</u> | <u>100.00%</u>          |                                 |

Effective May 1, 1978

SCHEDULE XI

| SERIAL NUMBER    | DESCRIPTION                 | NUMBER OF ACRES | DRILLING BLOCK   |                                     | PERCENTAGE COMMITTED                | PRESENT ACTUAL PARTICIPATION |
|------------------|-----------------------------|-----------------|--|-------------------------------------|-------------------------------------|------------------------------|
|                  |                             |                 | OWNERSHIP  | PERCENTAGE                          |                                     |                              |
| M 04207          | T-32-N, R-6-W               | 280.00          |  |                                     |                                     |                              |
|                  | Sec. 17: E/2 W/2, SW/4 SW/4 |                 | Royalty;<br>Working Interest:<br>El Paso Natural Gas Co.;<br>Amerada Petroleum Corp.;<br>ORRI; | 12.50%<br>41.00%<br>41.00%<br>5.50% | 12.50%<br>41.00%<br>41.00%<br>5.50% | 3.393047%                    |
|                  | Sec. 18: S/2 SE/4           |                 |  |                                     |                                     |                              |
|                  |                             |                 | TOTAL  | <u>100.00%</u>                      | <u>100.00%</u>                      |                              |
|                  |                             |                 | TRACT 7  |                                     |                                     |                              |
| -22-Ind.<br>2792 | (Colorado)<br>T-32-N, R-6-W | 32.29           |  |                                     |                                     |                              |
|                  | Sec. 19: Lot 6 (NE/4 SE/4)  |                 | Royalty;<br>Working Interest:<br>El Paso Natural Gas Co.;<br>Amerada Petroleum Corp.;<br>ORRI; | 12.50%<br>43.75%<br>43.75%<br>0.00% | 12.50%<br>43.75%<br>43.75%<br>0.00% | .391291%                     |
|                  |                             |                 | TOTAL  | <u>100.00%</u>                      | <u>100.00%</u>                      |                              |
|                  |                             |                 | TRACT 8  |                                     |                                     |                              |
| -503-6           | T-32-N, R-7-W               | 320.00          |  |                                     |                                     |                              |
|                  | Sec. 16: E/2                |                 | Royalty;<br>Working Interest:<br>El Paso Natural Gas Co.;<br>ORRI;                             | 12.5000%<br>75.5625%<br>11.9375%    | 12.5000%<br>75.5625%<br>11.9375%    | 3.877768%                    |
|                  |                             |                 | TOTAL  | <u>100.0000%</u>                    | <u>100.0000%</u>                    |                              |
|                  |                             |                 | TRACT 9  |                                     |                                     |                              |

Effective May 1, 1978

SCHEDULE XI

| SERIAL NUMBER | DESCRIPTION   | NUMBER<br>OF ACRES | DRILLING BLOCK |             | PERCENTAGE<br>COMMITTED | PRESENT ACTUAL<br>PARTICIPATION |
|---------------|---|--------------------|----------------|-------------|-------------------------|---------------------------------|
|               |   |                    | OWNERSHIP      | PERCENTAGE  |                         |                                 |
| ee            | (Colorado)<br>T-32-N, R-6-W<br>Sec. 19: E/2 NE/4                                  | 80.00              | TRACT 11       |             |                         |                                 |
|               | Royalty;  |                    | 12.50%         | 12.50%      |                         | .969442%                        |
|               | Working Interest:   |                    |                |             |                         |                                 |
|               | El Paso Natural Gas Co.;  |                    | 43.75%         | 43.75%      |                         |                                 |
|               | Atlantic Richfield Co.;   |                    | 21.87%         | 21.87%      |                         |                                 |
|               | Continental Oil Co.;  |                    | 5.47%          | 5.47%       |                         |                                 |
|               | Tenneco Oil Co.;  |                    | 16.41%         | 16.41%      |                         |                                 |
|               | ORRI;   |                    | 0.00%          | 0.00%       |                         |                                 |
|               | TOTAL   |                    | 100.00%        | 100.00%     |                         |                                 |
|               |   |                    |                |             |                         |                                 |
| ee            | (Colorado)<br>T-32-N, R-6-W<br>Sec. 20: N/2 NW/4                                  | 80.00*             | TRACT 12       |             |                         |                                 |
|               | Royalty;  |                    | 12.50%         | 10.9375%    |                         | .848262%                        |
|               | Working Interest:   |                    |                |             |                         |                                 |
|               | El Paso Natural Gas Co.;  |                    | 38.28125%      | 38.28125%   |                         |                                 |
|               | ARCO  |                    | 19.140625%     | 19.140625%  |                         |                                 |
|               | Tenneco Oil Co.;  |                    | 4.785156%      | 4.785156%   |                         |                                 |
|               | Conoco  |                    | 14.355469%     | 14.355469%  |                         |                                 |
|               | Burton C. Dunn*   |                    | 10.9375%       | 0.00%       |                         |                                 |
|               | TOTAL   |                    | 100.000000%    | 85.9375%    |                         |                                 |
|               |   |                    |                |             |                         |                                 |
| ee            | (Colorado)<br>T-32-N, R-6-W<br>Sec. 20: Lot 1 (NE/4 SE/4),<br>NW/4 NE/4, E/2 NE/4 | 152.21             | TRACT 13       |             |                         |                                 |
|               | Royalty;  |                    | 12.50%         | 12.50%      |                         | 1.844485%                       |
|               | Working Interest:   |                    |                |             |                         |                                 |
|               | El Paso Natural Gas Co.;  |                    | 43.75%         | 43.75%      |                         |                                 |
|               | ARCO  |                    | 21.875%        | 21.875%     |                         |                                 |
|               | Tenneco   |                    | 5.46875%       | 5.46875%    |                         |                                 |
|               | Conoco  |                    | 16.40625%      | 16.40625%   |                         |                                 |
|               | TOTAL   |                    | 100.000000%    | 100.000000% |                         |                                 |
|               |   |                    |                |             |                         |                                 |
|               |   |                    |                |             |                         |                                 |

SCHEDULE XI

| SERIAL NUMBER | DESCRIPTION   | NUMBER<br>OF ACRES     | DRILLING BLOCK |                          | PERCENTAGE<br>COMMITTED | PRESENT ACTUAL<br>PARTICIPATION |          |
|---------------|---------------|------------------------|----------------|--------------------------|-------------------------|---------------------------------|----------|
|               |               |                        | OWNERSHIP      | PERCENTAGE               |                         |                                 |          |
| 3e            | (Colorado)    |                        | TRACT 14       |                          |                         |                                 |          |
|               | T-32-N, R-6-W |                        | 160.00         |                          |                         | 1.938884%                       |          |
|               | Sec. 19:      | NW/4 NE/4              |                | Royalty;                 | 12.50%                  | 12.50%                          |          |
|               | Sec. 20:      | S/2 NW/4,<br>SW/4 NE/4 |                | Working Interest:        |                         |                                 |          |
|               |               |                        |                | El Paso Natural Gas Co.; | 43.75%                  | 43.75%                          |          |
|               |               |                        |                | Atlantic Richfield Co.;  | 21.87%                  | 21.87%                          |          |
|               |               |                        |                | Tenneco Oil Co.;         | 5.47%                   | 5.47%                           |          |
|               |               |                        |                | Continental Oil Co.;     | 16.41%                  | 16.41%                          |          |
|               |               |                        |                | ORRI;                    | 0.00%                   | 0.00%                           |          |
|               | TOTAL         |                        |                |                          | 100.00%                 | 100.00%                         |          |
| 3e            | (Colorado)    |                        | TRACT 17       |                          |                         |                                 |          |
|               | T-32-N, R-7-W |                        | 160.00         |                          |                         | 1.938884%                       |          |
|               | Sec. 23:      | E/2 NE/4               |                | Royalty;                 | 12.50%                  | 12.50%                          |          |
|               | Sec. 24:      | S/2 NW/4               |                | Working Interest:        |                         |                                 |          |
|               |               |                        |                | El Paso Natural Gas Co.; | 43.75%                  | 43.75%                          |          |
|               |               |                        |                | Amerada Petroleum Corp.; | 43.75%                  | 43.75%                          |          |
|               |               |                        |                | ORRI;                    | .00%                    | .00%                            |          |
|               | TOTAL         |                        |                |                          | 100.00%                 | 100.00%                         |          |
|               | 3e            | (Colorado)             |                | TRACT 18                 |                         |                                 |          |
|               |               | T-32-N, R-6-W          |                | 64.48                    |                         |                                 | .781370% |
| Sec. 20:      |               | Lots 2,3               |                | Royalty;                 | 12.50%                  | 12.50%                          |          |
|               |               |                        |                | Working Interest:        |                         |                                 |          |
|               |               |                        |                | El Paso Natural Gas Co.; | 43.75%                  | 43.75%                          |          |
|               |               |                        |                | Amerada Hess Corporation | 43.75%                  | 43.75%                          |          |
|               |               |                        |                | TOTAL                    |                         | 100.00%                         | 100.00%  |

SCHEDULE XI

| SERIAL NUMBER | DESCRIPTION                 | NUMBER OF ACRES | DRILLING BLOCK |                | PERCENTAGE COMMITTED | PRESENT ACTUAL PARTICIPATION |
|---------------|-----------------------------|-----------------|----------------|----------------|----------------------|------------------------------|
|               |                             |                 | OWNERSHIP      | PERCENTAGE     |                      |                              |
| ee            | (Colorado)                  |                 |                |                |                      |                              |
|               | T-32-N, R-7-W               | 80.00           |                |                |                      |                              |
|               | Sec. 24: N/2 NW/4           |                 |                |                |                      |                              |
|               | Royalty;                    |                 |                | 12.50%         |                      | .969442%                     |
|               | Working Interest:           |                 |                |                |                      |                              |
|               | El Paso Natural Gas Co.;    |                 |                | 43.75%         |                      |                              |
|               | Amerada Petroleum Corp.;    |                 |                | 43.75%         |                      |                              |
|               | ORRI;                       |                 |                | .00%           |                      |                              |
|               | TOTAL                       |                 |                | <u>100.00%</u> |                      |                              |
|               | TRACT 19                    |                 |                |                |                      |                              |
| ee            | (Colorado)                  |                 |                |                |                      |                              |
|               | T-32-N, R-6-W               | 298.39          |                |                |                      |                              |
|               | Sec. 19: Lots 1,2,3,4,5,    |                 |                |                |                      |                              |
|               | E/2 NW/4,                   |                 |                |                |                      |                              |
|               | SW/4 NE/4                   |                 |                |                |                      |                              |
|               | Royalty;                    |                 |                | 12.50%         |                      | 3.615897%                    |
|               | Working Interest:           |                 |                |                |                      |                              |
|               | El Paso Natural Gas Co.;    |                 |                | 43.75%         |                      |                              |
|               | Amerada Petroleum Corp.;    |                 |                | 43.75%         |                      |                              |
|               | ORRI;                       |                 |                | 0.00%          |                      |                              |
| ee            | (Colorado)                  |                 |                |                |                      |                              |
|               | T-32-N, R-7-W               | 387.23          |                |                |                      |                              |
|               | Sec. 23: Lot 1              |                 |                |                |                      |                              |
|               | Sec. 24: Lots 1,2,3,4, NE/4 |                 |                |                |                      |                              |
|               | T-32-N, R-6-W               |                 |                |                |                      |                              |
|               | Sec. 20: Lot 4              |                 |                |                |                      |                              |
|               | Royalty;                    |                 |                | 12.50%         |                      | 4.692463%                    |
|               | Working Interest:           |                 |                |                |                      |                              |
|               | El Paso Natural Gas Co.;    |                 |                | 43.75%         |                      |                              |
|               | Amerada Petroleum Corp.;    |                 |                | 43.75%         |                      |                              |
| ee            | (Colorado)                  |                 |                |                |                      |                              |
|               | T-32-N, R-6-W               | 100.00%         |                |                |                      |                              |
|               | Sec. 20: Lot 4              |                 |                |                |                      |                              |
|               | Royalty;                    |                 |                | 12.50%         |                      |                              |
|               | Working Interest:           |                 |                |                |                      |                              |
|               | El Paso Natural Gas Co.;    |                 |                | 43.75%         |                      |                              |
|               | Amerada Petroleum Corp.;    |                 |                | 43.75%         |                      |                              |
|               | ORRI;                       |                 |                | .00%           |                      |                              |
|               | TOTAL                       |                 |                | <u>100.00%</u> |                      |                              |
|               | TRACT 26                    |                 |                |                |                      |                              |

Effective May 1, 1978

SCHEDULE XI

| SERIAL NUMBER | DESCRIPTION   | NUMBER OF ACRES | DRILLING BLOCK   |  | PERCENTAGE COMMITTED                                 | PRESENT ACTUAL PARTICIPATION |
|---------------|---|-----------------|--|--|--|------------------------------|
|               |   |                 | OWNERSHIP  | PERCENTAGE   |  |                              |
| See           | T-32-N, R-6-W<br>Sec. 17: W/2 NW/4,<br>NW/4 SW/4<br>Sec. 18: N/2 NE/4 | 200.00          | Royalty;<br>Working Interest:<br>El Paso Natural Gas Co.;<br>Amerada Petroleum Corp.;<br>ORRI; | 12.50%<br>43.75%<br>43.75%<br>.00%<br><u>100.00%</u> | 12.50%<br>43.75%<br>43.75%<br>.00%<br><u>100.00%</u> | 2.423605%                    |
|               |   |                 | TRACT 27   |  |  |                              |
| See           | T-32-N, R-7-W<br>Sec. 13: NE/4  | 239.35          | Royalty;<br>Working Interest:<br>El Paso Natural Gas Co.;<br>Amerada Petroleum Corp.;<br>ORRI; | 16.66%<br>41.67%<br>41.67%<br>.00%<br><u>100.00%</u> | 16.66%<br>41.67%<br>41.67%<br>.00%<br><u>100.00%</u> | 2.900449%                    |
|               |   |                 | TRACT 29   |  |  |                              |
| See           | T-32-N, R-6-W<br>Sec. 18: Lot 1,<br>NE/4 NW/4                         |                 | Royalty;<br>Working Interest:<br>El Paso Natural Gas Co.;<br>Amerada Petroleum Corp.;<br>ORRI; | 41.67%<br>41.67%<br>41.67%<br>.00%<br><u>100.00%</u> | 41.67%<br>41.67%<br>41.67%<br>.00%<br><u>100.00%</u> |                              |
|               |   |                 | TOTAL  |  |  |                              |
| See           | T-32-N, R-7-W<br>Sec. 12: Lots 1,2,<br>3, E/2 SW/4,<br>SE/4           | 299.29          | Royalty;<br>Working Interest:<br>El Paso Natural Gas Co.;<br>Amerada Petroleum Corp.;<br>ORRI; | 12.50%<br>43.75%<br>43.75%<br>.00%<br><u>100.00%</u> | 12.50%<br>43.75%<br>43.75%<br>.00%<br><u>100.00%</u> | 3.626804%                    |
|               |   |                 | TRACT 30   |  |  |                              |
| See           | T-32-N, R-7-W<br>Sec. 13: E/2 NW/4,<br>SW/4,<br>W/2 SE/4              | 320.00          | Royalty;<br>Working Interest:<br>El Paso Natural Gas Co.;<br>Amerada Petroleum Corp.;<br>ORRI; | 12.50%<br>43.75%<br>43.75%<br>.00%<br><u>100.00%</u> | 12.50%<br>43.75%<br>43.75%<br>.00%<br><u>100.00%</u> | 3.877768%                    |
|               |   |                 | TRACT 31   |  |  |                              |
|               |   |                 | TOTAL  |  |  |                              |

**El Paso** NATURAL GAS  
COMPANY

P. O. BOX 1492  
EL PASO, TEXAS 79978  
PHONE: 915-543-2600

June 1, 1978

Regional Oil & Gas Supervisor  
United States Geological Survey  
Drawer 1857  
Roswell, New Mexico 88201

Commissioner of Public Lands  
State of New Mexico  
Post Office Box 1148  
Santa Fe, New Mexico 87501

Oil Conservation Commission  
State of New Mexico  
Post Office Box 2088  
Santa Fe, New Mexico 87501

no. 224

Re: Allison Unit  
San Juan County, New Mexico,  
and La Plata County, Colorado  
1978 DRILLING PROGRAM


Gentlemen:

The 1978 Drilling Program for the referenced Unit was approved by the regulatory bodies on the following dates:

|                                 |              |
|---------------------------------|--------------|
| United States Geological Survey | May 12, 1978 |
| Commissioner of Public Lands    | May 26, 1978 |
| Oil Conservation Commission     | May 8, 1978  |

Copies of this letter are being sent to the working interest owners of the referenced unit.

Yours very truly,

  
Derold Maney  
Landman  
Land Department  
Energy Resource Development

DM/sf  
Allison Unit 3.0

ALLISON UNIT  
Working Interest Owners

Amerada Hess Corporation (3)

Atlantic Richfield Company (3)  
Denver, Colorado

Ruth Phillips Bisiker  
(Stockholder of Phillips Drilling Corporation)

Castle, Inc.  
(Stockholder of Phillips Drilling Corporation)

Continental Oil Company

Suzanna Phillips Kelly  
(Stockholder of Phillips Drilling Corporation)

Jane Phillips Ladoucer  
(Stockholder of Phillips Drilling Corporation)

H. H. Phillips  
(Stockholder of Phillips Drilling Corporation)

H. H. Phillips, Jr.

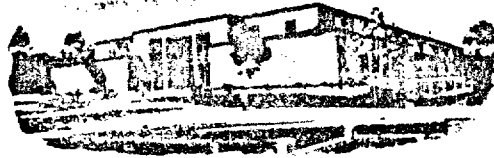
Winnie A. Phillips  
(Stockholder of Phillips Drilling Corporation)

Tenneco Oil Company





# State of New Mexico



## Commissioner of Public Lands

May 26, 1978

PHIL R. LUCERO  
COMMISSIONER

P. O. BOX 1148  
SANTA FE, NEW MEXICO 87501

El Paso Natural Gas Company  
P. O. Box 1492  
El Paso, Texas 79978

Re: Allison Unit  
San Juan County, New Mexico and  
La Plata & Archuleta Counties,  
Colorado  
1978 DRILLING PROGRAM

ATTENTION: Mr. D. N. Canfield

*un. 224*

Gentlemen:

The Commissioner of Public Lands has this date approved your 1978 Drilling Program for the Allison Unit, San Juan County, New Mexico and La Plata & Archuleta Counties, Colorado. Your plan calls for the drilling of wells No. 51 and 53 during 1978.

Both the USGS and OCC have approved this plan of development.

Enclosed is one approved copy for your files.

Please remit a Three (\$3.00) Dollar filing fee.

Very truly yours,

PHIL R. LUCERO  
COMMISSIONER OF PUBLIC LANDS

BY:  
RAY D. GRAHAM, Director  
Oil and Gas Division

PRL/RDG/s  
encls.  
cc:

OCC-Santa Fe, New Mexico ✓  
USGS-Roswell, New Mexico  
USGS-Albuquerque, New Mexico



# United States Department of the Interior

## GEOLOGICAL SURVEY

P. O. Box 26124  
Albuquerque, New Mexico 87125

MAY 12 1978

El Paso Natural Gas Company  
Attention: Mr. D. N. Canfield  
P.O. Box 1492  
El Paso, Texas 79973

*W. 224*

Gentlemen:

Three approved copies of your 1978 plan of development for the Allison Unit area, San Juan County, New Mexico and La Plata and Archuleta Counties, Colorado, are enclosed. Such plan, proposing the drilling of two Mesaverde wells on lands outside the participating area was approved on this date subject to like approval by the appropriate officials of the State of New Mexico.

Sincerely yours,

(ORIG. SGD.) JAMES W. SUTHERLAND

Oil and Gas Supervisor, SRMA

Enclosures

cc:

NMOCC, Santa Fe (ltr only) ← This Copy for  
Comm. Pub. lands, Santa Fe (Ltr only)

OIL CONSERVATION COMMISSION

P. O. BOX 2088

SANTA FE, NEW MEXICO 87501

May 8, 1978

El Paso Natural Gas Company  
P. O. Box 1492  
El Paso, Texas 79978

Attention: D. N. Canfield

Re: Case No. 224  
Allison Unit  
1978 Drilling Program

Gentlemen:

We hereby approve the 1978 Drilling Program for the Allison Unit, San Juan County, New Mexico, and La Plata and Archuleta Counties, Colorado, subject to like approval by the United States Geological Survey and the Commissioner of Public Lands.

One approved copy of the Drilling Program is returned herewith.

Very truly yours,

JOE D. RAMEY  
Director

JDR/LT/fd  
enc.

cc: U.S.G.S. - Roswell  
Commissioner of Public Lands

**El Paso** NATURAL GAS  
COMPANY

P.O. BOX 1492  
EL PASO, TEXAS 79978  
PHONE: 915-543-2600

May 3, 1978

Regional Oil & Gas Supervisor  
United States Geological Survey  
Drawer 1857  
Roswell, New Mexico 88201

Commissioner of Public Lands  
State of New Mexico  
Post Office Box 1148  
Santa Fe, New Mexico 87501

Oil Conservation Commission  
State of New Mexico  
Post Office Box 2088  
Santa Fe, New Mexico 87501

*Approve*  
*no. 224*

Re: Allison Unit I Section No. 752  
San Juan County, New Mexico and La Plata  
& Archuleta Counties, Colorado  
1978 DRILLING PROGRAM

Gentlemen:

By letter dated February 25, 1977, El Paso Natural Gas Company, as Unit Operator of the Allison Unit, filed a Drilling Program covering the subject Unit for the calendar year 1977. This Program provided for the drilling of two wells. The Allison Unit #22 was drilled to the Mesaverde formation in the existing participating area. The Allison Unit #59 well is a dual Mesaverde/Dakota test outside the existing participating areas for both formations. It has been determined commercial in both formations and will cause an expansion of each formation.

As of this date, the total number of wells in the Allison Unit is as follows:

|  |           |
|--|-----------|
| Mesaverde  | 6         |
| Dakota   | 5         |
| Dakota, Non-commercial   | 3         |
| Dual, Mesaverde/Dakota   | 11        |
| Dual, Mesaverde/Dakota (Dakota Non-commercial)                 | 3         |
| Dual, Mesaverde/Dakota (Dakota dry, plugged back to Mesaverde) | 1         |
| Plugged & Abandoned (Allison Nos. 3, 4, 11, 23 & 30)           | 5         |
|  | <u>34</u> |

Regional Oil and Gas Supervisor  
Commissioner of Public Lands  
Oil Conservation Commission  
Page Two

Pursuant to Section 9 of the Allison Unit Agreement, El Paso Natural Gas Company, as Unit Operator, is submitting this Drilling Program providing for the drilling of the following wells during the calendar year 1978.

| <u>Well No.</u> | <u>Drilling Block</u>                  | <u>Formation</u> |
|-----------------|--|------------------|
| 51              | T-32-N, R-6-W, NMPM<br>W/2 Section 21: | Mesaverde        |
| 53              | T-32-N, R-6-W, NMPM<br>E/2 Section 29: | Mesaverde        |

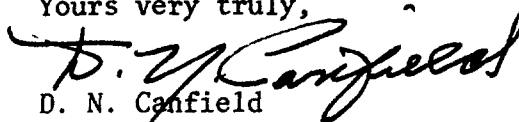
All working interest owners have been contacted, and this Drilling Program reflects their desires. El Paso Natural Gas Company, as Unit Operator, and the working interest owners believe that all current obligations have been satisfied.

El Paso Natural Gas Company, as Unit Operator, plans to drill any off-set wells required to prevent drainage of unitized substances and any other wells deemed necessary or desirable by the Unit Operator and the working interest owners.

If this Drilling Program is acceptable, please signify your approval as required under Section 9 of the Unit Agreement in the space provided on the attached sheet and return an approved copy to El Paso Natural Gas Company.

Copies of this letter are being sent to the working interest owners shown on the attached sheet.

Yours very truly,

  
D. N. Canfield  
Director of Land  
Energy Resource Development

DNC/DM/sf  
Attachmants  
Allison Unit 3.0

cc: Mr. Antonio Martinez, Executive Director  
New Mexico Oil and Gas Accounting Commission  
P. O. Box 2308  
Santa Fe, New Mexico 87501

APPROVED: \_\_\_\_\_

Regional Oil & Gas Supervisor  
United States Geological Survey  
Subject to like approval by the  
Commissioner of Public Lands and  
the Oil Conservation Commission

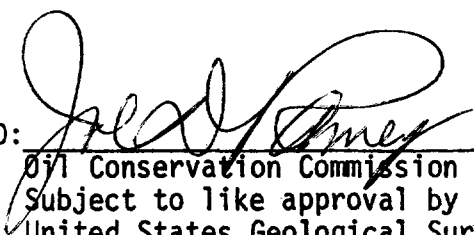
DATE: \_\_\_\_\_

APPROVED: \_\_\_\_\_

Commissioner of Public Lands  
Subject to like approval by the  
United States Geological Survey  
and the Oil Conservation Commission

DATE: \_\_\_\_\_

APPROVED: \_\_\_\_\_

  
Oil Conservation Commission  
Subject to like approval by the  
United States Geological Survey  
and the Commissioner of Public Lands

DATE: 5/8/78

The foregoing approvals are for the 1978 Drilling Program for the Allison Unit I - Section No. 752, San Juan County, New Mexico, and La Plata County and Archuleta County, Colorado.

ALLISON UNIT  
Working Interest Owners

Amerada Hess Corporation (3)

Atlantic Richfield Company (3)  
Denver, Colorado

Ruth Phillips Bisiker  
(Stockholder of Phillips Drilling Corporation)

Castle, Inc.  
(Stockholder of Phillips Drilling Corporation)

Continental Oil Company

Suzanna Phillips Kelly  
(Stockholder of Phillips Drilling Corporation)

Jane Phillips Ladoucer  
(Stockholder of Phillips Drilling Corporation)

H. H. Phillips  
(Stockholder of Phillips Drilling Corporation)

H. H. Phillips, Jr.

Winnie A. Phillips  
(Stockholder of Phillips Drilling Corporation)

Tenneco Oil Company