

Jim

OIL CONSERVATION COMMISSION

P. O. BOX 2088

SANTA FE, NEW MEXICO 87501

July 16, 1974

C
O
P
Y

**Perry R. Bass
Fort Worth National Bank Building
Fort Worth, Texas 76102**

Attention: Mr. W. P. Duncan, Jr.

**Re: Initial Participating Area
Morrow Formation, Big Eddy
Unit, Eddy County, New Mexico**

Gentlemen:

This is to advise that the New Mexico Oil Conservation Commission has this date approved the Initial Participating Area for the Morrow Formation for the Big Eddy Unit, Eddy County, New Mexico, subject to like approval by the United States Geological Survey and the Commissioner of Public Lands of the State of New Mexico.

One approved copy of the application is returned herewith.

Very truly yours,

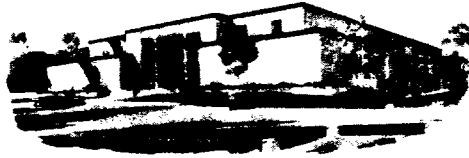
**A. L. PORTER, Jr.
Secretary-Director**

ALP/JEK/og

**cc: Oil Conservation Commission
Artesia, Aztec, Hobbs**

State of New Mexico

TELEPHONE
505-827-2748



Commissioner of Public Lands

June 26, 1974

ALEX J. ARMIJO
COMMISSIONER

P. O. BOX 1148
SANTA FE, NEW MEXICO

Perry R. Bass
Fort Worth National Bank Building
Fort Worth, Texas 76102

Re: Big Eddy Unit
INITIAL PARTICIPATING AREA,
MORROW FORMATION
EDDY AND LEA COUNTIES,
NEW MEXICO

ATTENTION: Mr. W. P. Duncan, Jr.

Gentlemen:

The Commissioner of Public Lands has this date approved your Initial Participating Area for the Morrow Formation covering the N/2 of Section 29, Township 21 South, Range 28 East. This approval is subject to like approval by the United States Geological Survey and the New Mexico Oil Conservation Commission.

Enclosed is one approved copy for your files.

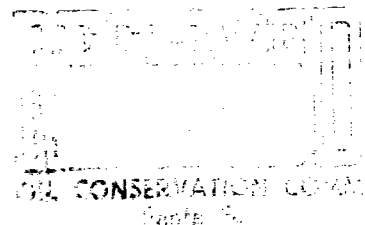
In the future please submit three copies to this office.

Very truly yours,

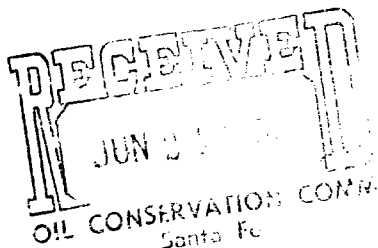
RAY D. GRAHAM, Director
Oil and Gas Department

AJA/RDG/s
encls. 1
cc:

USGS-Roswell, New Mexico
OCC- Santa Fe, New Mexico ✓



PERRY R. BASS
FORT WORTH NATIONAL BANK BUILDING
FORT WORTH, TEXAS
76102



June 11, 1974

Re: Big Eddy Unit
No. 14-08-001-326

U. S. Geological Survey
Drawer 1857
Roswell, New Mexico 88201

Commissioner of Public Lands
P. O. Box 1148
Santa Fe, New Mexico 87501

Oil Conservation Commission
P. O. Box 2088
Santa Fe, New Mexico 87501

Gentlemen:

Reference is made to the above captioned Unit covering lands located in Eddy and Lea Counties, New Mexico. Perry R. Bass, as operator, hereby requests that an Initial Participating Area of the N/2 of Section 29-T21S-R28E be established for the Morrow formation.

The Perry R. Bass #39 Big Eddy Unit well, located 1980' from the North and East lines of Section 29-T21S-R28E, was drilled to a total depth of 12,240'. The well was then completed in the Morrow formation from perforations from 11,762-66, 11,772-76, 11,796-803, 11,842-53 for an initial potential of 9,000 MCF of gas per day.

In support of this application, the following are attached hereto and made a part hereof:

Exhibit "A": Map showing portion of Unit boundary and Initial Participating Area.

Exhibit "B": Schedule showing lands entitled to participate in unitized substances produced from the Morrow formation, with the percentage of participation of each lease indicated thereon.

Exhibit "C": Geological structure map.

U. S. Geological Survey
Commissioner of Public Lands
Oil Conservation Commission
June 11, 1974
page 2

As unit operator, we hereby respectfully submit that a Morrow Participating Area covering the N/2 of Section 29 be established in accordance with the terms and provisions of the Big Eddy Unit Agreement.

Yours very truly,

PERRY R. BASS

By

P. R. Bass

WPD:ld
Attachments

APPROVED:

U. S. Geological Survey

By _____
Date _____

Commissioner of Public Lands

By _____
Date _____

New Mexico Oil Conservation Commission

By *A. H. Peters*
Date *July 16, 1974*

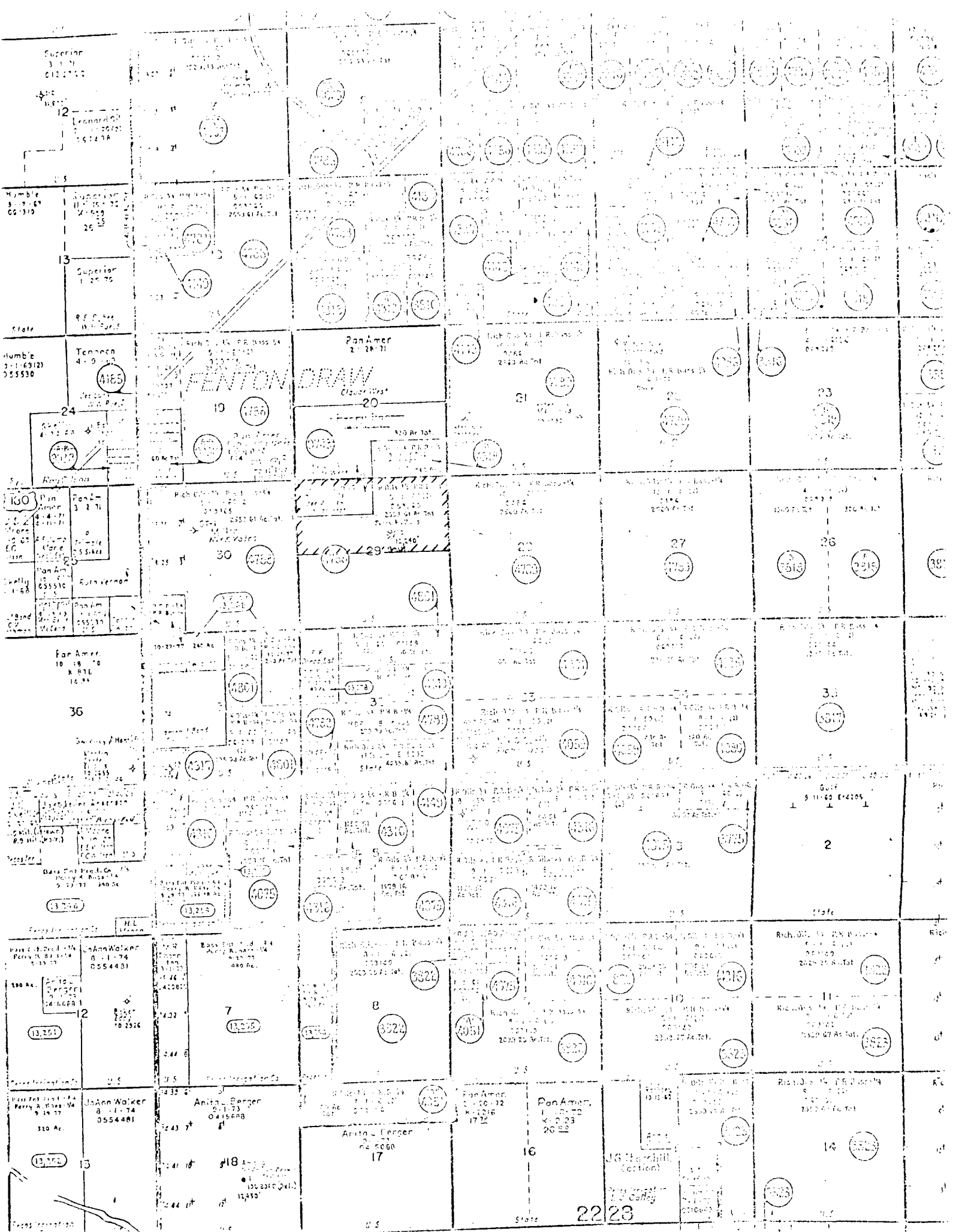
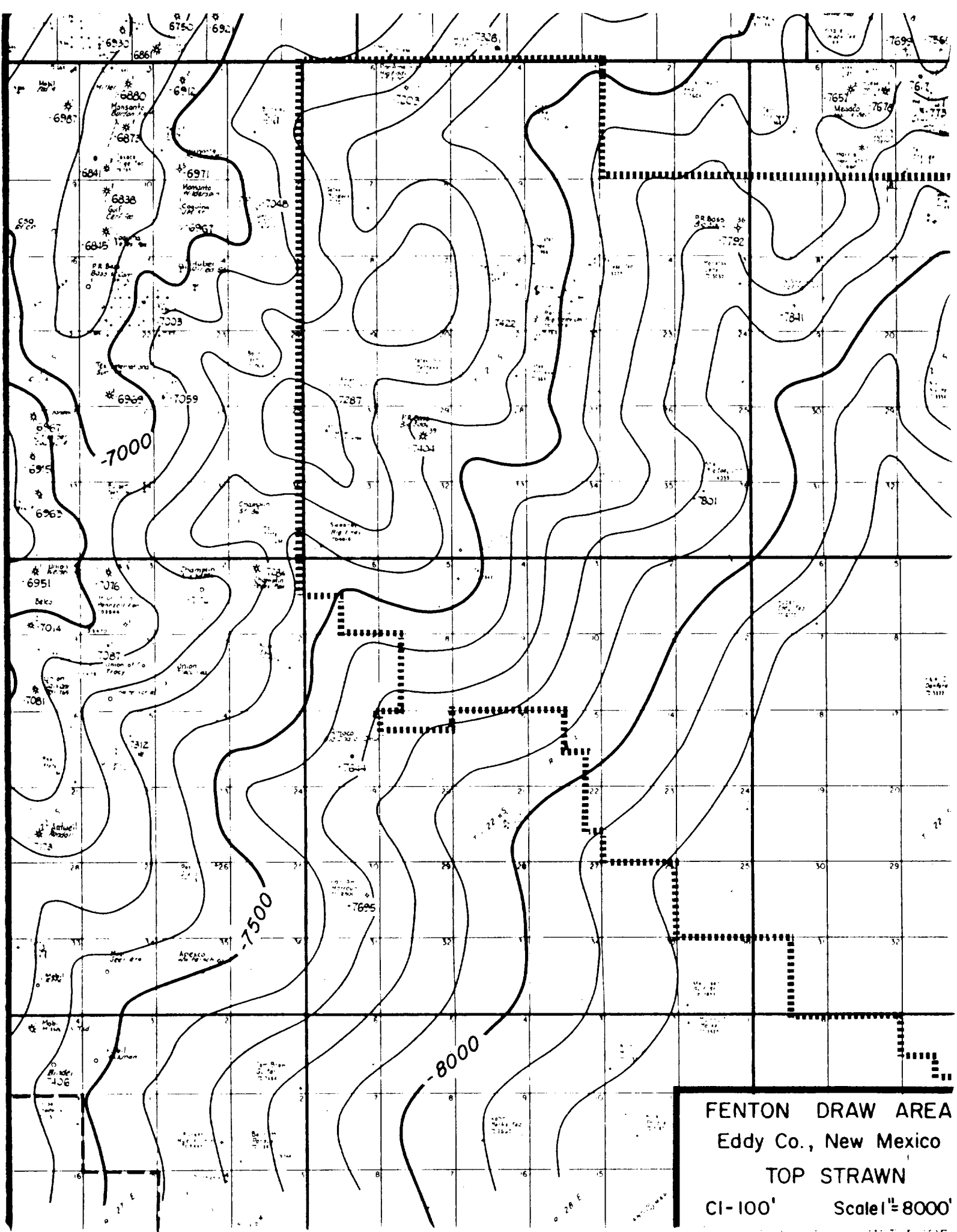


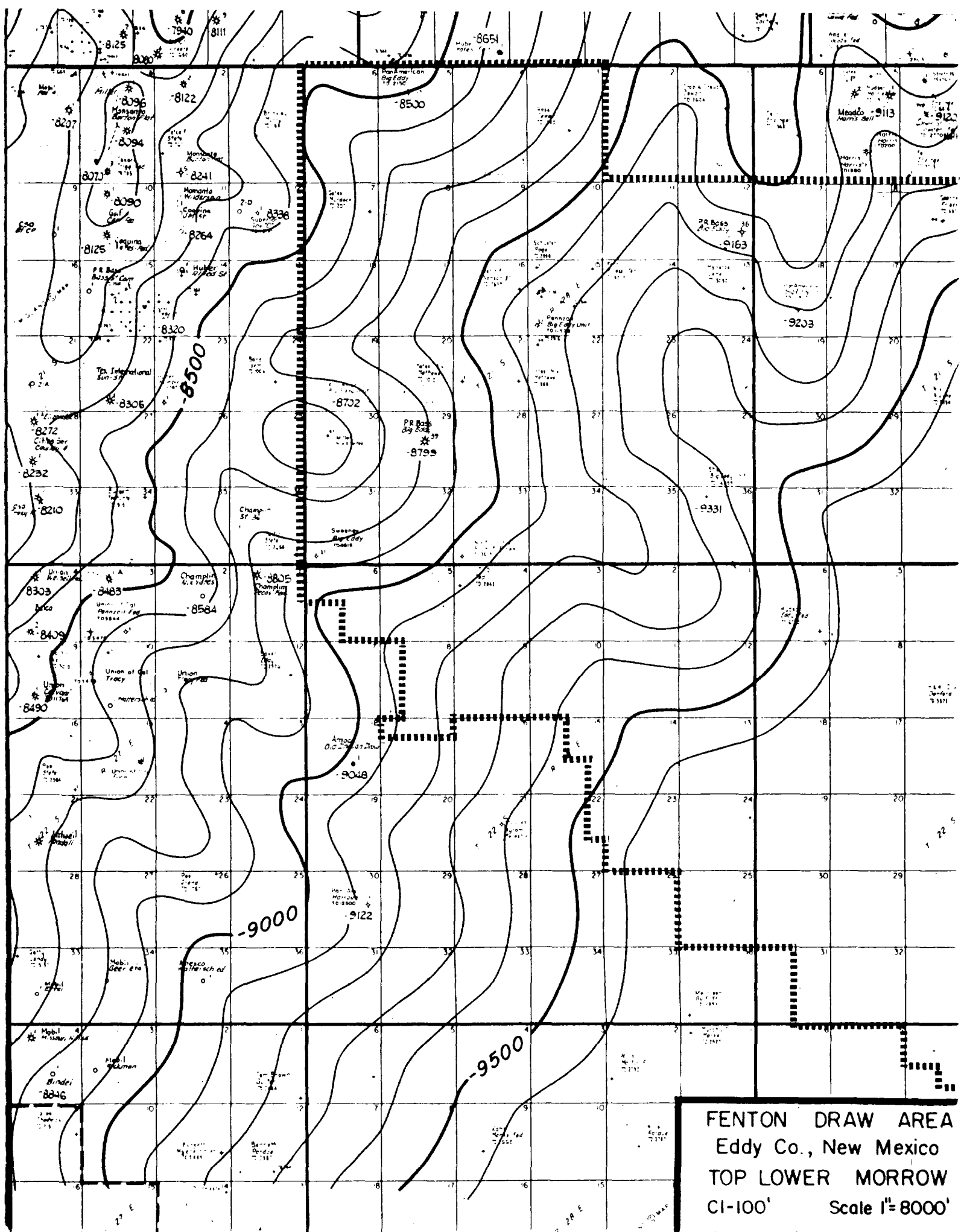
EXHIBIT "B"

Initial Participating Area for the Morrow Formation

Lease Number	Description	Acres	Working Interest	Royalty	Tract Participation Percentage
LC-059365	T21S-R28E Sec. 29: NE/4 and S/2 NW/4	240	Bass Enterprises Production Co. 3/4 Perry R. Bass 1/4 Subject to 5% ORR payable to: Ralph Nix	USA 12 1/2%	75
Fee	T21S-R28E Sec. 29: N/2 NW/4	80	Amoco Production Co.	Mayme Lusk 3/16	25



FENTON DRAW AREA
Eddy Co., New Mexico
TOP STRAWN
CI-100' Scale 1"=8000'





United States Department of the Interior

GEOLOGICAL SURVEY

Drawer 1857
Roswell, New Mexico 88201

DISSEMINATION
OIL CONSERVATION COMM
Santa Fe

December 23, 1974

368

Perry R. Bass
Attention: Mr. W. Arthur Hamilton
Fort Worth National Bank Building
Fort Worth, Texas 76102

Gentlemen:

The 1975 plan of development submitted for the Big Eddy unit area, Eddy County, New Mexico, was approved on this date subject to like approval by the appropriate State officials. Such plan proposes the re-entry and deepening of unit well No. 32 in sec. 15, T. 21 S., R. 28 E., to the Morrow and the drilling of two Morrow wells. Four approved copies are enclosed.

Sincerely yours,

G. R. DANIELS
Acting Area Oil and Gas Supervisor

ec:
NMOCC, Santa Fe (ltr only)
Com. Pub. Lands, Santa Fe (ltr only)
Artesia (w/cy plan)

JAGillham:ds



United States Department of the Interior

GEOLOGICAL SURVEY

Drawer 1857
Roswell, New Mexico 88201

RECEIVED
Jul 12 8 55 AM '74

July 9, 1974

Perry R. Bass
Fort Worth National Bank Bldg.
Fort Worth, Texas 76102

Gentlemen:

The initial Morrow participating area of Big Eddy unit agreement, Eddy and Lea Counties, New Mexico, No. 14-03-001-326, was approved on July 9, 1974, by the Acting Area Oil and Gas Supervisor, U. S. Geological Survey, and is effective as of January 15, 1974 pursuant to section 11 of the unit agreement.

The initial Morrow participating area embraces the $N\frac{1}{2}$ of section 29, T. 21 S., R. 28 E., N.M.P.M., containing 320.00 acres, and is based on the completion of unit well No. 39 located in the $SW\frac{1}{4}$ $NE\frac{1}{4}$ of section 29 as a commercial well. Unit well No. 39 was completed on January 15, 1974, for a calculated absolute open flow potential of 9,000 MCFGPD from the Morrow interval 11,762 to 11,853 feet.

Copies of the approved application are being distributed to the appropriate Federal offices and five copies are returned herewith. You are requested to furnish the State of New Mexico and all interested parties with appropriate evidence of this approval.

Sincerely yours

(ORIG. SGD.) CARL C. TRAYWICK

CARL C. TRAYWICK
Acting Area Oil and Gas Supervisor

cc:
BLM, Santa Fe (1tr only)
Artesia (w/cy appln.)
NMOCC, Santa Fe (1tr only) ✓
Com. Pub. Lands, Santa Fe (1tr only)

ARStallard

Sent to Land office by mistake



United States Department of the Interior

GEOLOGICAL SURVEY

Drawer 1857
Roswell, New Mexico 88201

January 18, 1974

Perry R. Bass
Attention: Mr. Howard W. Jennings
Twelfth Floor, Fort Worth National Bank Bldg.
Fort Worth, Texas 76102

Gentlemen:

One approved copy of your 1974 plan of development for the Big Eddy unit area, Eddy County, New Mexico, is enclosed. Such plan proposes to 1) complete the drilling of unit well No. 38 which is now drilling below 7,000 feet, 2) drill a 13,300 foot Morrow test in sec. 27, T. 21 S., R. 29 E., following a productive completion of unit well No. 38, 3) drill a 12,200 foot Morrow well in sec. 20, T. 21 S., R. 28 E., offsetting unit well No. 39, 4) conduct approximately 60 miles of geophysical work, 5) drill a unit wildcat at a location to be determined from the information supplied by the geophysical work and 6) take appropriate and adequate measures to prevent drainage of unitized substances from lands subject to the unit agreement.

This plan was approved on this date and is subject to like approval by the appropriate officials of the State of New Mexico.

Sincerely yours,

CARL C. TRAYWICK
Acting Area Oil & Gas Supervisor

cc:
✓NMOCC, Santa Fe (ltr only)
Com. Pub. Lands, Santa Fe (ltr only)
Artesia (w/cy plan)

JAGillham:ds

OIL CONSERVATION COMMISSION

P. O. BOX 2088

SANTA FE, NEW MEXICO 87501

January 9, 1974

265

Perry R. Bass
12th Floor Ft. Worth Nat'l Bank Bldg.
Fort Worth, Texas 76102

Attention: Mr. Howard W. Jennings

Re: 1974 Plan of Development
Big Eddy Unit, Eddy County,
New Mexico.

Gentlemen:

This is to advise that the New Mexico Oil Conservation Commission has this date approved the Plan of Development for the calendar year 1974 for the Big Eddy Unit, Eddy County, New Mexico, subject to like approval by the United States Geological Survey and the Commissioner of Public Lands of the State of New Mexico.

One approved copy of the plan is returned herewith.

Very truly yours,

A. L. PORTER, Jr.
Secretary-Director

ALP/JEK/og

cc: Commissioner of Public Lands - Santa Fe
U. S. Geological Survey - Roswell

PERRY R. BASS
12TH FLOOR FT WORTH NAT'L BANK BLDG
FORT WORTH, TEXAS
76102

December 14, 1973

United States Geological Survey (3)
Drawer 1857
Roswell, New Mexico 88201

Commissioner of Public Lands (2)
P. O. Box 1148
Santa Fe, New Mexico 87501

Oil Conservation Commission (2)
P. O. Box 2088
Santa Fe, New Mexico 87501

Re: 1974 Plan of Development
Big Eddy Unit -
Eddy County, New Mexico

Gentlemen:

In accordance with Section 10 of the Big Eddy Unit Agreement, Perry R. Bass, Operator for said Unit, hereby submits a Plan of Development for the above captioned Unit for 1974.

HISTORY OF PAST DEVELOPMENT

We refer to our previous Plans of Development for a detailed description of past development on this Unit. To date, we have drilled, or caused to be drilled, 24 deep tests within the Unit area. By deep tests, it is meant that the wells were drilled to approximately 12,000', or deeper, to test the Pennsylvanian and/or Devonian formations. In addition to the deep tests, five shallow tests have also been drilled.

1973 ACTIVITY

During the year of 1973 we conducted 62.903 miles of sismograph lines on this Unit costing approximately \$100,000.00. We attach a map hereto showing the location of this work.

In addition to the above we drilled Big Eddy No. 35, 1980' FN&WL's Section 27, T-20S, R-30E, Eddy County, New Mexico. This well was spudded 3-29-73 and drilled to TD of 12,684'. The well was PB 12,601' and perforated 12,236-552'. The IP was an estimated 2.930 MMCF per day. The well made 10 bbls. of condensate per MMCF plus 67 BW. It was completed 6-28-73 and is presently shut in for a gas connection.

Big Eddy No. 36 was drilled 1980' FSL & 660' FEL Section 12, T-21S, R-28E, Eddy County, New Mexico. This well was spudded 6-2-73 and drilled to a TD of 12,756'. This well was drilled in a seismic low, and was dry and abandoned 7-25-73.

Big Eddy No. 37 was drilled 1980' FN&WL's Section 10, T-20S, R-31E, Eddy County, New Mexico. This well was spudded 7-26-73 and drilled to a TD of 13,016'. This well indicated possible Morrow sands near this location but the well was dry and abandoned 9-14-73.

Big Eddy No. 38 is presently drilling 660' FNL & 1980' FWL Section 34, T-21S, R-29E, Eddy County, New Mexico. The well was spudded 11-28-73 and as of this date is drilling below 7,000'.

Big Eddy No. 39 was drilled 1980' FN&EL's Section 29, T-21S, R-28E, Eddy County, New Mexico. The well was spudded 9-26-73 and drilled to a TD of 12,240 - PB 12,236'. This well tested 9 MMCF on a drill stem test in the upper Morrow and we are presently testing the lower Morrow to determine if it is productive.

FUTURE DEVELOPMENT

At the present time we have programed seismic lines for 1974 of approximately 60 miles. Depending, of course, on our completion tests on Big Eddy No's 38 & 39, we need this seismic data for future development.

We anticipate at the present time to drill an offset to Big Eddy 39, 1980' from South and East lines Section 20-21S-28E. We anticipate this well will be drilled to a TD 12,200' to test the Morrow formation.

We also have a tentative location 1980' from South and East lines of Section 27-21S-29E which would be offsetting Big Eddy No. 38. This well is estimated to be drilled to 13,300' to test the Morrow formation.

In addition to the above we have tentative plans for another wildcat well on the Unit. After our seismic survey has been completed we expect to pick this location.

In addition to the above wells, Unit Operator has committed to support additional Morrow tests on the perimeter of the Unit area. No definite conclusions have been reached concerning the drilling of these tests; however, Unit Operator is actively pursuing these ventures.

OFFSET OBLIGATIONS

Appropriate and adequate measures will be taken to prevent drainage of unitized substances from land subject to the Big Eddy Unit Agreement, or, pursuant to applicable regulation, fair and reasonable compensatory royalty will be paid as provided by the Unit Agreement.

ADDITIONAL DEVELOPMENT

This Plan of Development shall constitute the drilling obligations of the Unit Operator under the terms of the Big Eddy Unit Agreement for the period ending December 31, 1974.

MODIFICATIONS

It is understood that this Plan of Development may be modified from time to time to meet changing conditions.

EFFECTIVE DATE

This plan of Development shall be effective January 1, 1974.

If this Plan of Development meets with your approval, please indicate in the appropriate space provided below and return one copy for our files.

Yours very truly,

PERRY R. BASS, Unit Operator

By: 
Howard W. Jennings

1974 Plan of Development
Big Eddy Unit -
Eddy County, New Mexico

Page 4
December 14, 1973

Approved: _____ Date: _____
Supervisor, United States Geological Survey

Approved: _____ Date _____
Commissioner of Public Lands

Approved: G. H. Porter - Jr. Date January 9, 1974
Oil Conservation Commission