

NORTHWEST PIPELINE CORPORATION

April 10, 1978

ONE PARK CENTRAL, SUITE 1487
DENVER, COLORADO 80202
303-623-9303

Mr. James A. Gillham
United States Geological Survey
Post Office Drawer 1857
Roswell, New Mexico 88201

Commissioner of Public Lands
State of New Mexico
Attention: Mr. Ray D. Graham
Post Office Box 1148
Santa Fe, New Mexico 87501

Oil Conservation Commission
State of New Mexico
Attention: Mr. Joe Ramey
Post Office Box 2088
Santa Fe, New Mexico 87501

No. 419

Re: San Juan 29-6 Unit
#14-08-001-439
NOTICE OF COMPLETION OF
ADDITIONAL MESAVERDE WELLS

Gentlemen:

Pursuant to Section 11(a) of the San Juan 29-6 Unit Agreement, Northwest Pipeline Corporation, as Unit Operator, has determined that the following wells capable of producing unitized substances in paying quantities have been completed upon acreage committed to the Unit:

The San Juan 29-6 Unit No. 7A Well is located 1530' from the North Line and 895' from the West Line, Section 34, Township 29 North, Range 6 West, N.M.P.M., Rio Arriba County, New Mexico. This well was spudded on March 19, 1977, and completed on March 27, 1977, in the Mesaverde formation at a plug back total depth of 5540'. The Mesaverde formation was perforated with one hole at each of the following depths: 4995', 5040', 5046', 5052', 5058', 5126', 5131', 5238', 5302', 5347', 5357', 5363', 5415', 5430', 5440', 5446', 5452', 5458', 5496', 5506', 5517', and 5535'. These perforations were treated with 7-1/2% hydrochloric acid, followed by a sand-water fracturing. The well was shut-in March 27, 1977 for eight (8) days with a SIPT of 905 psig and a SIPC of 905 psig. On April 4, 1977, the well was tested and after flowing for three (3) hours through a 48/64 inch variable choke on the 2-3/8 inch tubing, the well gauged 5770 MCFD with a calculated AOF of 10,557 MCFD.

The San Juan 29-6 Unit No. 11A Well is located 1080' from the North Line and 840' from the West Line, Section 7, Township 29 North, Range 6 West, N.M.P.M., Rio Arriba County, New Mexico. This well was spudded on December 14, 1977, and completed on March 29, 1978, in the Mesaverde formation at a plug back total depth of 5662'. The Mesaverde formation was perforated with one hole at each of the following depths: 5064', 5072', 5094', 5106', 5116', 5122', 5128', 5140', 5147', 5188', 5238', 5296', 5304', 5328', 5336', 5345', 5424', 5434', 5473', 5483', 5488', 5504', 5512', 5518', 5526', 5532', 5538', 5546', 5557', 5565', 5572'. These perforations were treated with 1000 gals of 7-1/2% hydrochloric acid, followed by a sand-water fracturing. The well was shut-in March 17, 1978 for twelve days with a SIPT of 888 psig and a SIPC of 892 psig. On March 29, 1978, the well was tested and after flowing for three (3) hours through a 3/4 inch variable choke on the 2-3/8 inch tubing, the well gauged 4106 MCFD with a calculated AOF of 9860 MCFD.

The San Juan 29-6 Unit No. 17A Well is located 1470' from the South Line and 885' from the East Line, Section 1, Township 29 North, Range 6 West, N.M.P.M., Rio Arriba County, New Mexico. This well was spudded on July 14, 1977, and completed on August 4, 1977, in the Mesaverde formation at a plug back total depth of 5745'. The Mesaverde formation was perforated with one hole at each of the following depths: 5341', 5356', 5375', 5388', 5464', 5470', 5476', 5482', 5522', 5526', 5534', 5540', 5572', 5576', 5588', 5634', 5642', 5652', 5660', 5670', 5676', 5682', 5690', 5716', and 5722'. These perforations were treated with 1000 gals of 7-1/2% hydrochloric acid, followed by a sand-water fracturing. The well was shut-in July 27, 1977 for eight days with a SIPT of 633 psig and a SIPC of 635 psig. On August 4, 1977, the well was tested and after flowing for three (3) hours through a 3/4 inch variable choke on the 2-3/8 inch tubing, the well gauged 5507 MCFD with a calculated AOF of 12,326 MCFD.

The San Juan 29-6 Unit No. 9A Well is located 1460' from the North Line and 800' from the West Line, Section 36, Township 29 North, Range 6 West, N.M.P.M., Rio Arriba County, New Mexico. This well was spudded on January 15, 1977, and completed on January 27, 1977, in the Mesaverde formation at a plug back total depth of 5626'. The Mesaverde formation was perforated with one hole at each

U.S.G.S.
Commissioner of Public Lands
Oil Conservation Commission
April 10, 1978
page three

of the following depths: 5064', 5116', 5122', 5128', 5134', 5143', 5337', 5380', 5458', 5466', 5472', 5488', 5494', 5508', 5514', 5520', 5528', 5538', 5544', 5578', 5590', and 5605'. These perforations were treated with 7-1/2% hydrochloric acid, followed by a sand-water fracturing. The well was shut-in January 27, 1977 for nine days with a SIPT of 858 psig and a SIPC of 859 psig. On February 8, 1977, the well was tested and after flowing for three (3) hours through a 3/4 inch variable choke on the 2-3/8 inch tubing, the well gauged 7062 MCFD with a calculated AOF of 14,813 MCFD.

The San Juan 29-6 Unit No. 19A Well is located 1450' from the South Line and 1010' from the East Line, Section 8, Township 29 North, Range 6 West, N.M.P.M., Rio Arriba County, New Mexico. This well was spudded on November 5, 1977, and completed on November 15, 1977, in the Mesaverde formation at a plug back total depth of 5775'. The Mesaverde formation was perforated with one hole at each of the following depths: 5270', 5274', 5278', 5282', 5292', 5296', 5300', 5372', 5376', 5424', 5430', 5574', 5580', 5586', 5608', 5614', 5620', 5628', 5634', 5638', 5642', 5649', 5660', 5666', 5672', 5682', 5688', 5694', 5701', and 5706'. These perforations were treated with 7-1/2% hydrochloric acid, followed by a sand-water fracturing. The well was shut-in November 15, 1977 for eight days with a SIPT of 936 psig and a SIPC of 936 psig. On November 23, 1977, the well was tested and after flowing for three (3) hours through a 3/4 inch variable choke on the 2-3/8 inch tubing, the well gauged 4240 MCFD with a calculated AOF of 10,317 MCFD.

The San Juan 29-6 Unit No. 22A Well is located 790' from the South Line and 990' from the East Line, Section 12, Township 29 North, Range 6 West, N.M.P.M., Rio Arriba County, New Mexico. This well was spudded on July 26, 1977, and completed on August 4, 1977, in the Mesaverde formation at a plug back total depth of 5843'. The Mesaverde formation was perforated with one hole at each of the following depths: 5390', 5396', 5408', 5434', 5444', 5468', 5476', 5484', 5506', 5516', 5532', 5544', 5556', 5598', 5614', 5664', 5680', 5732', 5753', 5760', 5772', 5778', 5790', 5800', and 5812'. These perforations were treated with 7-1/2% hydrochloric acid, followed by a sand-water fracturing. The well was shut-in August 4, 1977 for 20 days with a SIPT of 601 psig and a SIPC of 601 psig. On August 24, 1977, the well was tested and after flowing for three (3) hours through a 3/4 inch variable choke on the 2-3/8 inch tubing, the well gauged 3762 MCFD with a calculated AOF of 5818 MCFD.

The San Juan 29-6 Unit No. 23A Well is located 1790' from the North Line and 885' from the West Line, Section 12, Township 29 North, Range 6 West, N.M.P.M., Rio Arriba County, New Mexico. This well was spudded on August 4, 1977, and completed on August 13, 1977, in the Mesaverde formation at a plug back total depth of 5745'. The Mesa-formation was perforated with one hole at each of the following depths: 5294', 5300', 5308', 5314', 5320', 5376', 5382', 5388', 5420', 5500', 5506', 5544', 5566', 5584', 5628', 5634', 5640', 5658', 5664', 5670', 5682', 5688', 5704', 5710', and 5720'. These perforations were treated with 7-1/2% hydrochloric acid, followed by a sand-water fracturing. The well was shut-in August 13, 1977 for seventeen days with a SIPT of 651 psig and a SIPC of 681 psig. On August 30, 1977, the well was tested and after flowing for three (3) hours through a 3/4 inch variable choke on the 2-3/8 inch tubing, the well gauged 3972 MCFD with a calculated AOF of 6109 MCFD.

The San Juan 29-6 Unit No. 27A Well is located 1180' from the North Line and 1650' from the West Line, Section 23, Township 29 North, Range 6 West, N.M.P.M., Rio Arriba County, New Mexico. This well was spudded on April 14, 1977, and completed on April 22, 1977, in the Mesaverde formation at a plug back total depth of 5707'. The Mesa-verde formation was perforated with one hole at each of the following depths: 5146', 5158', 5188', 5196', 5204', 5210', 5264', 5272', 5328', 5334', 5482', 5492', 5536', 5544', 5552', 5560', 5566', 5576', 5582', 5596', 5606', 5614', 5622', 5630', and 5638'. These perforations were treated with 1500 gals of 7-1/2% hydrochloric acid, followed by a sand-water fracturing. The well was shut-in April 22, 1977 for seven days with a SIPT of 761 psig and a SIPC of 798 psig. On April 29, 1977, the well was tested and after flowing for three (3) hours through a 3/4 inch variable choke on the 2-3/8 inch tubing, the well gauged 4664 MCFD with a calculated AOF of 8496 MCFD.

The San Juan 29-6 Unit No. 30A Well is located 1830' from the South Line and 990' from the East Line, Section 10, Township 29 North, Range 6 West, N.M.P.M., Rio Arriba County, New Mexico. This well was spudded on August 22, 1977, and completed on September 4, 1977, in the Mesaverde formation at a plug back total depth of 5775'. The Mesa-verde formation was perforated with one hole at each of the following depths: 5296', 5302', 5306', 5312', 5318', 5324', 5330', 5346', 5394', 5400', 5434', 5440', 5482', 5488', 5494', 5562', 5568', 5574', 5580', 5642', 5650', 5658', 5664', 5672', 5678', 5702', 5708', 5714', 5720' and 5726'.

U.S.G.S.
Commissioner of Public Lands
Oil Conservation Commission
April 10, 1978
page five

These perforations were treated with 7-1/2% hydrochloric acid, followed by a sand-water fracturing. The well was shut-in September 4, 1977 for 40 days with a SIPT of 601 psig and a SIPC of 605 psig. On October 13, 1977, the well was tested and after flowing for three (3) hours through a 3/4 inch variable choke on the 2-3/8 inch tubing, the well gauged 2470 MCFD with a calculated AOF of 5445 MCFD.

The San Juan 29-6 Unit No. 31A Well is located 990' from the North Line and 1840' from the West Line, Section 10, Township 29 North, Range 6 West, N.M.P.M., Rio Arriba County, New Mexico. This well was spudded on September 15, 1977, and completed on September 25, 1977, in the Mesaverde formation at a plug back total depth of 5793'. The Mesa-verde formation was perforated with one hole at each of the following depths: 5298', 5302', 5308', 5314', 5320', 5326', 5392', 5402', 5410', 5422', 5428', 5434', 5446', 5452', 5458', 5466', 5552', 5632', 5638', 5644', 5656', 5664', 5672', 5678', 5694', 5700', 5706', 5712', 5720', and 5730'. These perforations were treated with 7-1/2% hydrochloric acid, followed by a sand-water fracturing. The well was shut-in September 25, 1977 for twelve days with a SIPT of 563 psig and a SIPC of 615 psig. On October 7, 1977, the well was tested and after flowing for three (3) hours through a 3/4 inch variable choke on the 2-3/8 inch tubing, the well gauged 3911 MCFD with a calculated AOF of 7118 MCFD.

The San Juan 29-6 Unit No. 32A Well is located 1560' from the North Line and 1490' from the West Line, Section 11, Township 29 North, Range 6 West, N.M.P.M., Rio Arriba County, New Mexico. This well was spudded on September 4, 1977, and completed on September 15, 1977, in the Mesaverde formation at a plug back total depth of 5778'. The Mesa-verde formation was perforated with one hole at each of the following depths: 5314', 5320', 5328', 5334', 5368', 5376', 5396', 5402', 5408', 5446', 5480', 5486', 5494', 5514', 5526', 5628', 5636', 5646', 5652', 5660', 5670', 5676', 5684', 5690', 5696', 5712', 5718', 5724', 5730', and 5733'. These perforations were treated with 7-1/2% hydrochloric acid, followed by a sand-water fracturing. The well was shut-in September 15, 1977 for seven days with a SIPT of 533 psig and a SIPC of 533 psig. On September 22, 1977, the well was tested and after flowing for three (3) hours through a 3/4 inch variable choke on the 2-3/8 inch tubing, the well gauged 3346 MCFD with a calculated AOF of 6909 MCFD.

The San Juan 29-6 Unit No. 43A Well is located 1755' from the South Line and 1840' from the East Line, Section 26, Township 29 North, Range 6 West, N.M.P.M., Rio Arriba County, New Mexico. This well was spudded on March 9, 1977, and completed on March 20, 1977, in the Mesaverde formation at a plug back total depth of 5604'. The Mesaverde formation was perforated with one hole at each of the following depths: 5104', 5109', 5114', 5122', 5177', 5186', 5208', 5212', 5216', 5222', 5286', 5332', 5348', 5438', 5444', 5453', 5458', 5478', 5484', 5490', 5510', 5526', 5546', 5555', and 5560'. These perforations were treated with 7-1/2% hydrochloric acid, followed by a sand-water fracturing. The well was shut-in March 20, 1977 for eight days with a SIPT of 941 psig and a SIPC of 975 psig. On March 28, 1977, the well was tested and after flowing for three (3) hours through a 3/4 inch variable choke on the 2-3/8 inch tubing, the well gauged 5587 MCFD with a calculated AOF of 9418 MCFD.

The San Juan 29-6 Unit No. 44A Well is located 1540' from the North Line and 950' from the West Line, Section 26, Township 29 North, Range 6 West, N.M.P.M., Rio Arriba County, New Mexico. This well was spudded on April 5, 1977, and completed on April 14, 1977, in the Mesaverde formation at a plug back total depth of 5638'. The Mesaverde formation was perforated with one hole at each of the following depths: 5102', 5108', 5140', 5146', 5159', 5164', 5176', 5184', 5258', 5264', 5270', 5362', 5400', 5406', 5494', 5500', 5506', 5512', 5524', 5534', 5549', 5554', 5562', 5576', and 5584'. These perforations were treated with 7-1/2% hydrochloric acid, followed by a sand-water fracturing. The well was shut-in April 14, 1977 for eight days with a SIPT of 1014 psig and a SIPC of 1014 psig. On April 22, 1977, the well was tested and after flowing for three (3) hours through a 3/4 inch variable choke on the 2-3/8 inch tubing, the well gauged 8216 MCFD with a calculated AOF of 15,900 MCFD.

The San Juan 29-6 Unit No. 45A Well is located 1650' from the South Line and 990' from the East Line, Section 27, Township 29 North, Range 6 West, N.M.P.M., Rio Arriba County, New Mexico. This well was spudded on February 27, 1977, and completed on March 9, 1977, in the Mesaverde formation at a plug back total depth of 5553'. The Mesaverde formation was perforated with one hole at each of the following depths: 5002', 5013', 5040', 5069', 5072', 5090', 5190', 5196', 5290', 5296', 5316', 5400', 5406', 5412', 5418', 5423', 5460', 5475', 5478', 5500', 5514', and 5540'. These perforations were treated with 7-1/2% hydrochloric acid, followed by a sand-water fracturing. The well was shut-in March 9, 1977 for seven days with a SIPT of 951 psig and a SIPC of 952 psig. On March 16,

1977, the well was tested and after flowing for three (3) hours through a 3/4 inch variable choke on the 2-3/8 inch tubing, the well gauged 6896 MCFD with a calculated AOF of 11,898 MCFD.

The San Juan 29-6 Unit No. 48A Well is located 1720' from the South Line and 1170' from the East Line, Section 35, Township 29 North, Range 6 West, N.M.P.M., Rio Arriba County, New Mexico. This well was spudded on February 17, 1977, and completed on February 27, 1977, in the Mesaverde formation at a plug back total depth of 5706'. The Mesa-formation was perforated with one hole at each of the following depths: 5154', 5198', 5204', 5210', 5216', 5222', 5228', 5380', 5390', 5396', 5542', 5548', 5554', 5560', 5566', 5572', 5578', 5588', 5598', 5604', 5618', 5654', 5664', and 5690'. These perforations were treated with 7-1/2% hydrochloric acid, followed by a sand-water fracturing. The well was shut-in February 27, 1977 for eight days with a SIPT of 993 psig and a SIPC of 996 psig. On March 7, 1977, the well was tested and after flowing for three (3) hours through a 3/4 inch variable choke on the 2-3/8 inch tubing, the well gauged 7561 MCFD with a calculated AOF of 14,201 MCFD.

The San Juan 29-6 Unit No. 49A Well is located 1830' from the North Line and 1170' from the West Line, Section 35, Township 29 North, Range 6 West, N.M.P.M., Rio Arriba County, New Mexico. This well was spudded on January 27, 1977, and completed on February 7, 1977, in the Mesaverde formation at a plug back total depth of 5647'. The Mesa-verde formation was perforated with one hole at each of the following depths: 5100', 5108', 5114', 5144', 5166', 5172', 5177', 5190', 5271', 5336', 5385', 5397', 5405', 5445', 5455', 5498', 5506', 5514', 5520', 5526', 5532', 5553', 5573', and 5616'. These perforations were treated with 7-1/2% hydrochloric acid, followed by a sand-water fracturing. The well was shut-in February 7, 1977 for nine days with a SIPT of 965 psig and a SIPC of 969 psig. On February 16, 1977, the well was tested and after flowing for three (3) hours through a 3/4 inch variable choke on the 2-3/8 inch tubing, the well gauged 5469 MCFD with a calculated AOF of 8761 MCFD.

The San Juan 29-6 Unit No. 50A Well is located 1830' from the South Line and 1100' from the East Line, Section 36, Township 29 North, Range 6 West, N.M.P.M., Rio Arriba County, New Mexico. This well was spudded on February 7, 1977, and completed on February 17, 1977, in the Mesaverde formation at a plug back total depth of 5666'. The Mesa-verde formation was perforated with one hole at each

of the following depths: 5123', 5136', 5164', 5171', 5179', 5188', 5194', 5236', 5418', 5424', 5446', 5492', 5498', 5504', 5510', 5520', 5526', 5538', 5555', 5574', 5580', and 5622'. These perforations were treated with 7-1/2% hydrochloric acid, followed by a sand-water fracturing. The well was shut-in February 17, 1977 for seven days with a SIPT of 906 psig and a SIPC of 926 psig. On February 24, 1977, the well was tested and after flowing for three (3) hours through a 3/4 inch variable choke on the 2-3/8 inch tubing, the well gauged 5663 MCFD with a calculated AOF of 8522 MCFD.

The San Juan 29-6 Unit No. 52A Well is located 1160' from the South Line and 1110' from the East Line, Section 34, Township 29 North, Range 6 West, N.M.P.M., Rio Arriba County, New Mexico. This well was spudded on March 28, 1977, and completed on April 5, 1977, in the Mesaverde formation at a plug back total depth of 5585'. The Mesaverde formation was perforated with one hole at each of the following depths: 5082', 5088', 5094', 5100', 5108', 5128', 5134', 5154', 5242', 5254', 5279', 5320', 5326', 5409', 5416', 5480', 5486', 5492', 5502', 5512', 5518', 5524', 5530', 5536', and 5548'. These perforations were treated with 7-1/2% hydrochloric acid, followed by a sand-water fracturing. The well was shut-in April 5, 1977 for seven days with a SIPT of 901 psig and a SIPC of 924 psig. On April 12, 1977, the well was tested and after flowing for three (3) hours through a 3/4 inch variable choke on the 2-3/8 inch tubing, the well gauged 6098 MCFD with a calculated AOF of 11,493 MCFD.

The San Juan 29-6 Unit No. 54A Well is located 1480' from the North Line and 800' from the West Line, Section 4, Township 29 North, Range 6 West, N.M.P.M., Rio Arriba County, New Mexico. This well was spudded on December 1, 1977, and completed on December 12, 1977, in the Mesaverde formation at a plug back total depth of 5756'. The Mesaverde formation was perforated with one hole at each of the following depths: 5267', 5270', 5279', 5285', 5289', 5295', 5354', 5358', 5391', 5395', 5421', 5425', 5507', 5511', 5515', 5529', 5622', 5630', 5636', 5661', 5665', 5668', 5672', 5676', 5682', 5686', 5688', 5692', and 5700'. These perforations were treated with 7-1/2% hydrochloric acid, followed by a sand-water fracturing. The well was shut-in December 14, 1977 for seven days with a SIPT of 440 psig and a SIPC of 685 psig. On December 21, 1977, the well was tested and after flowing for three (3) hours through a 3/4 inch variable choke on the 2-3/8 inch tubing, the well gauged 2606 MCFD with a calculated AOF of 4979 MCFD.

The San Juan 29-6 Unit No. 59A Well is located 1830' from the South Line and 820' from the East Line, Section 5, Township 29 North, Range 6 West, N.M.P.M., Rio Arriba County, New Mexico. This well was spudded on November 23, 1977, and completed on November 30, 1977, in the Mesaverde formation at a plug back total depth of 5792'. The Mesaverde formation was perforated with one hole at each of the following depths: 5302', 5308', 5326', 5330', 5336', 5350', 5356', 5410', 5416', 5422', 5428', 5434', 5446', 5534', 5546', 5568', 5626', 5632', 5648', 5656', 5672', 5678', 5684', 5704', 5710', 5716', 5722', 5728', 5736', and 5742'. These perforations were treated with 7-1/2% hydrochloric acid, followed by a sand-water fracturing. The well was shut-in December 1, 1977 for seven days with a SIPT of 847 psig and a SIPC of 882 psig. On December 8, 1977, the well was tested and after flowing for three (3) hours through a 3/4 inch variable choke on the 2-3/8 inch tubing, the well gauged 3857 MCFD with a calculated AOF of 9606 MCFD.

The San Juan 29-6 Unit No. 66A Well is located 1175' from the North Line and 990' from the West Line, Section 9, Township 29 North, Range 6 West, N.M.P.M., Rio Arriba County, New Mexico. This well was spudded on November 15, 1977, and completed on November 23, 1977, in the Mesaverde formation at a plug back total depth of 5706'. The Mesaverde formation was perforated with one hole at each of the following depths: 5192', 5198', 5222', 5242', 5248', 5256', 5262', 5278', 5286', 5322', 5328', 5334', 5354', 5360', 5378', 5410', 5438', 5534', 5540', 5552', 5558', 5592', 5598', 5622', 5628', 5634', 5640', 5646', 5652', and 5658'. These perforations were treated with 7-1/2% hydrochloric acid, followed by a sand-water fracturing. The well was shut-in November 23, 1977 for seven days with a SIPT of 832 psig and a SIPC of 867 psig. On December 1, 1977, the well was tested and after flowing for three (3) hours through a 3/4 inch variable choke on the 2-3/8 inch tubing, the well gauged 3742 MCFD with a calculated AOF of 7985 MCFD.

The San Juan 29-6 Unit No. 72A Well is located 1450' from the North Line and 1620' from the West Line, Section 22, Township 29 North, Range 6 West, N.M.P.M., Rio Arriba County, New Mexico. This well was spudded on April 22, 1977, and completed on May 1, 1977, in the Mesaverde formation at a plug back total depth of 5602'. The Mesaverde formation was perforated with one hole at each of the following depths: 5052', 5062', 5076', 5092', 5100', 5106', 5112', 5132', 5246', 5400', 5440', 5448', 5456', 5462', 5468', 5476', 5482', 5492', 5498', 5506', 5520', 5528', 5536', 5544', and 5574'. These perforations were treated with

U.S.G.S.
Commissioner of Public Lands
Oil Conservation Commission
April 10, 1978
page ten

7-1/2% hydrochloric acid, followed by a sand-water fracturing. The well was shut-in May 1, 1977 for nine days with a SIPT of 876 psig and a SIPC of 937 psig. On May 10, 1977, the well was tested and after flowing for three (3) hours through a 3/4 inch variable choke on the 2-3/8 inch tubing, the well gauged 2561 MCFD with a calculated AOF of 4068 MCFD.

Since these wells were drilled within the existing Mesaverde Participating Area, the Participating Area is not enlarged by virtue of these infill wells, and the percentage of participation remains the same.

Copies of this letter are being sent to the working interest owners shown on the attached sheet.

Sincerely,


Betty/R. Burnett

Supervisor of Contracts and Units

BRB:mk

Enclosures

Attachment

cc: Working Interest Owners

SAN JUAN 29-6 UNIT

Working Interest Owners

Amoco Production Company
Attention: Mr. T. M. Curtis
Security Life Building
Denver, CO 80202

American Petrofina Company
of Texas
P. O. Box 2159
Dallas, TX 75221

El Paso Natural Gas Company
Attention: James R. Permenter
P. O. Box 1492
El Paso, TX 79978

General American Oil Company
of Texas
Attention: Mr. L. E. Dooley
Meadows Building
Dallas, TX 75205

Mr. Tom Bolack
1010 North Dustin Drive
Farmington, NM 87401

Mr. James E. McElvain, Executor
for the Estate of Carl R.
McElvain, Deceased
309 West Jefferson Street
Morris, IL 60450

Koch Industries, Inc.
P. O. Box 2256
Wichita, KS 57201

James J. Johnston
2635 Exxon Building
Houston, TX 77002

Phillips Petroleum Company
Attention: Mr. N. N. Beckner
Security Life Building
Denver, CO 80202

Mr. J. William McElvain
310 East Jefferson Street
Morris, IL 60450

Atlantic Richfield Company
Mr. W. A. Walther, Jr.
1860 Lincoln Street
501 Lincoln Tower Building
Denver, CO 80203

Southland Royalty (Aztec Oil & Gas)
Attention: L. O. Van Ryan
P.O. Drawer 570
Farmington, New Mexico 87401

Mrs. Veva Jean Gibbard
P. O. Box 436
Sulphur, OK 73086

First National Bank of Ft. Worth
Trustee U/A/W Eula May Johnston
P. O. Box 2546
Fort Worth, TX 76101

Beta Development Company
Attention: Mr. John Hampton
P. O. Box 1659
Midland, TX 79701

Mrs. Catherine B. McElvain
Individually and as Executrix of the
Estate of T. H. McElvain, Deceased
Box 2148
Santa Fe, NM 87501

V. A. Johnston Family Trust
P. O. Box 925
Ralls, TX 79357

Supron Energy Corporation
Suite 1700 Campbell Centre
8350 North Central Expressway
Dallas, TX 75206

National Cooperative Refinery Assoc.
404 Lincoln Tower Building
Denver, CO 80202

J. Glenn Turner, Jr., Independent Co-
Executor of Estate of J. Glenn Turner,
Deceased
1700 Mercantile Bank Building
Dallas, TX 75201

SAN JUAN 29-6 UNIT

Working Interest Owners, continued

Ms. Mabelle M. Miller
Individually and as Independent
Executrix of the Estate of
Forrest B. Miller
1224 Lois Street
Post Office Box 1445
Kerrville, Texas 78028

Mrs. Ruth M. Vaughn
300 Caversham Road
Byrn Mawr, Pennsylvania 19010

Union Texas Petroleum
A Division of Allied Chemical Corporation
Attention: Mr. W. L. Hixon
Post Office Box 2120
Houston, Texas 77001

Texas Pacific Oil Company, Inc.
Attention: Mr. L. B. Jeffers
1700 One Main Place
Dallas, Texas 75250

Union Oil Company of California
Attention: Mr. Harold Simpson
District Operations Manager
Post Office Box 2620
Casper, Wyoming 82601

The Wiser Oil Company
Post Office Box 192
Sistersville, West Virginia 26175

411

NORTHWEST PIPELINE CORPORATION

May 24, 1977

ONE PARK CENTRAL, SUITE 1487
DENVER, COLORADO 80202
303-623-9303

Mr. Carl C. Traywick
Assistant Oil and Gas Supervisor
United States Geological Survey
Post Office Drawer 1857
Roswell, New Mexico 88201

Commissioner of Public Lands
State of New Mexico
Attention: Mr. Ray D. Graham
Post Office Box 1148
Santa Fe, New Mexico 87501

Oil Conservation Commission
State of New Mexico
Attention: Mr. Joe Ramey
Post Office Box 2088
Santa Fe, New Mexico 87501

Re: San Juan 29-6 Unit #14-08-001-439
Notice of Completion of Additional
Wells, Mesaverde Formation

Gentlemen:

Pursuant to Section 11(a) of the San Juan 29-6 Unit Agreement, approved December 5, 1952, Northwest Pipeline Corporation, as unit operator, determined that sixteen (16) additional wells capable of producing unitized substances in paying quantities from the Mesaverde formation has been completed upon acreage committed to the unit. These wells are as follows:

The San Juan Unit No. 4A well is located 1500 feet from the North Line and 1100 feet from the West Line, Section 17, Township 29 North, Range 6 West, N.M.P.M., Rio Arriba County, New Mexico. This well was spudded on September 10, 1976 and completed on October 4, 1976 in the Mesaverde Formation at a plug back depth of 5631'. The Mesaverde Formation was perforated with one hole at each of the following depths: 5068', 5074', 5116', 5122', 5128', 5163', 5174', 5241', 5248', 5262', 5468', 5474', 5480', 5498', 5509', 5520', 5526', 5532', 5542', 5550', 5557', 5565', 5618'.

These perforations were treated with 7½% HCL followed by a sand-water fracturing. The well was shut-in September 24, 1976 for 11 days with a SIPT of 794 psig and SIPC of 886 psig. On October 4, 1976, the well was tested and after flowing for three (3) hours through a 3/4" variable choke on the 2-3/8 inch tubing, the well gauged 5599 MCFD with a calculated AOF of 12,911 MCFD.

The San Juan Unit No. 5A well is located 1830 feet from the North Line and 1560 feet from the West Line Section 30, Township 29 North, Range 6 West, N.M.P.M., Rio Arriba County, New Mexico. This well was spudded on November 3, 1976 and completed on December 2, 1976 in the Mesaverde Formation at a plug back depth of 5808'. The Mesaverde Formation was perforated with one hole at each of the following depths: 5169', 5180', 5186', 5196', 5208', 5216', 5228', 5302', 5606', 5612', 5618', 5624', 5630', 5636', 5642', 5652', 5684', 5690', 5696', 5704', 5716', 5724', 5736'. These perforations were treated with 7½% HCL followed by a sand-water fracturing. The well was shut-in November 23, 1976 for 8 days with a SIPT of 712 psig and SIPC of 718 psig. On December 2, 1976, the well was tested and after flowing for three (3) hours through a 3/4" variable choke on the 2-3/8" tubing, the well gauged 5640 MCFD with a calculated AOF of 10,693 MCFD.

The San Juan Unit No. 6A well is located 1095 feet from the North Line and 1780 feet from the West Line, Section 21, Township 29 North, Range 6 West, N.M.P.M., Rio Arriba County, New Mexico. This well was spudded on July 21, 1976 and completed on August 19, 1976 in the Mesaverde Formation at a plug back depth of 5690'. The Mesaverde Formation was perforated with one hole at each of the following depths: 5066', 5074', 5084', 5110', 5118', 5126', 5134', 5148', 5462', 5468', 5476', 5484', 5508', 5514', 5522', 5530', 5544', 5552', 5564', 5578', 5584'. These perforations were treated with 7½% HCL followed by a sand-water fracturing. The well was shut-in August 9, 1976 for 9 days with a SIPT of 398 psig and SIPC of 681 psig. On August 19, 1976, the well was tested and after flowing for three (3) hours through a 3/4" variable choke on the 2-3/8" tubing, the well gauged 3595 MCFD with a calculated AOF of 7349 MCFD.

The San Juan Unit No. 24-A is located 1165 feet from the South Line and 1775 feet from the East Line, Section 21, Township 29 North, Range 6 West, N.M.P.M., Rio Arriba County, New Mexico. This well was spudded on November 15, 1976 and completed on December 3, 1976 in the Mesaverde Formation at a plug back depth of 5544'. The Mesaverde Formation was perforated with one hole at each of the following depths: 4990', 4999', 5034', 5045', 5054', 5061', 5069', 5075', 5384', 5389', 5394', 5400', 5406', 5412', 5418', 5424', 5448', 5456', 5463', 5470', 5479', 5512'. These perforations were treated with 7½% HCL followed by sand-water fracturing. The well was shut-in November 26, 1976 for 7 days with a SIPT of 863 psig and SIPC of 857 psig. On December 3, 1976, the well was tested and after flowing for three (3) hours through a 3/4" variable choke on the 2-3/8 inch tubing, the well gauged 7391 MCFD with a calculated AOF of 16,888 MCFD.

The San Juan Unit No. 37A is located 990 feet from the South Line and 1100 feet from the East Line, Section 16, Township 29 North, Range 6 West, N.M.P.M., Rio Arriba County, New Mexico. This well was spudded on June 15, 1976 and completed on August 16, 1976 in the Mesaverde Formation at a plug back depth of 5660'. The Mesaverde Formation was perforated with one hole at each of the following depths: 5138', 5146', 5154', 5164', 5172', 5180', 5308', 5316', 5442', 5450', 5496', 5512', 5520', 5530', 5540', 5548', 5556', 5564', 5572', 5588', 5596'. These perforations were treated with 7½% HCL followed by sand-water fracturing. The well was shut-in August 9, 1976 for 7 days. On August 16, 1976, the well was tested and after flowing for three (3) hours through a 3/4" variable choke on the 2-3/8 inch tubing, the well gauged 1924 MCFD with a calculated AOF of 3861 MCFD.

The San Juan Unit No. 46A is located 940 feet from the North Line and 790 feet from the West Line, Section 27, Township 29 North, Range 6 West, N.M.P.M., Rio Arriba County, New Mexico. This well was spudded on November 26, 1976 and completed on December 29, 1976 in the Mesaverde Formation at a plug back depth of 5638'. The Mesaverde Formation was perforated

with one hole at each of the following depths: 5070', 5106', 5120', 5126', 5134', 5140', 5238', 5324', 5332', 5470', 5476', 5482', 5498', 5504', 5512', 5520', 5528', 5534', 5544', 5556', 5592', 5618'. These perforations were treated with 7½% HCL followed by sand-water fracturing. The well was shut-in December 10, 1976 for 18 days with a SIPT of 906 psig and SIPC of 906 psig. On December 29, 1976, the well was tested and after flowing for three (3) hours through a 3/4" variable choke on the 2-3/8 inch tubing, the well gauged 7310 MCFD with a calculated AOF of 16,898 MCFD.

The San Juan Unit No. 47A is located 820 feet from the South Line and 1730 feet from the East Line, Section 28, Township 29 North, Range 6 West, N.M.P.M., Rio Arriba County, New Mexico. This well was spudded on December 11, 1976 and completed on January 3, 1977 in the Mesaverde Formation at a plug back depth of 5626'. The Mesaverde Formation was perforated with one hole at each of the following depths: 5038', 5044', 5052', 5058', 5064', 5080', 5092', 5102', 5412', 5455', 5461', 5466', 5480', 5486', 5491', 5500', 5506', 5512', 5517', 5544', 5564', 5612'. These perforations were treated with 7½% HCL followed by a sand-water fracturing. The well was shut-in December 22, 1976 for 11 days with a SIPT of 828 psig and SIPC of 847 psig. On January 3, 1977, the well was tested and after flowing for three (3) hours through a 48/64" variable choke on the 2-3/8 inch tubing, the well gauged 6910 MCFD with a calculated AOF of 16,591 MCFD.

The San Juan Unit No. 55A is located 1460 feet from the West Line and 900 feet from the North Line, Section 18, Township 29 North, Range 6 West, N.M.P.M., Rio Arriba County, New Mexico. This well was spudded on August 8, 1976 and completed on September 9, 1976 in the Mesaverde Formation at a plug back depth of 5642'. The Mesaverde Formation was perforated with one hole at each of the following depths: 5003', 5015', 5025', 5064', 5070', 5076', 5082', 5408', 5416', 5424', 5437', 5443', 5452', 5460', 5468', 5476', 5484', 5492', 5504', 5536', 5562'. These perforations were treated with 7½% HCL followed by a sand-water fracturing. The well was shut-in August 25, 1976 for 14 days with a SIPT of 816 psig and SIPC of 912 psig. On September 9, 1976, the well was tested and after flowing for three (3) hours through a 3/4" variable choke on the 2-3/8 inch tubing, the well gauged 3664 MCFD with a calculated AOF of 7531 MCFD.

The San Juan Unit No. 58A is located 1150 feet from the North Line and 870 feet from the West Line, Section 28, Township 29 North, Range 6 West, N.M.P.M., Rio Arriba County, New Mexico. This well was spudded on December 21, 1976 and completed on January 21, 1977 in the Mesaverde Formation at a plug back depth of 5540'. The Mesaverde Formation was perforated with one hole at each of the following depths: 4942', 4956', 4998', 5004', 5010', 5016', 5022', 5068', 5276', 5338', 5346', 5368', 5374', 5380', 5392', 5398', 5412', 5418', 5426', 5437', 5476', 5504'. These perforations were treated with 7½% HCL followed by sand-water fracturing. The well was shut-in January 5, 1977 for 15 days with a SIPT of 909 psig and SIPC of 935 psig. On January 21, 1977, the well was tested and after flowing for three (3) hours through a 3/4" variable choke on the 2-3/8 inch tubing, the well gauged 7,149 MCFD with a calculated AOF of 14,739 MCFD.

The San Juan Unit No. 60A is located 1620 feet from the South Line and 1490 feet from the East Line, Section 18, Township 29 North, Range 6 West, N.M.P.M., Rio Arriba County, New Mexico. This well was spudded on August 25, 1976, 1976 and completed on September 15, 1976 in the Mesaverde Formation at a plug back depth of 5505'. The Mesaverde Formation was perforated with one hole at each of the following depths: 4912', 4918', 4958', 4964', 4970', 4976', 4982', 5016', 5338', 5346', 5353', 5359', 5366', 5372', 5380', 5388', 5396', 5406', 5414', 5422', 5436'. These perforations were treated with 7½% HCL followed by sand-water fracturing. The well was shut-in September 9, 1976 for 7 days with a SIPT of 903 psig and SIPC of 934 psig. On September 14, 1976, the well was tested and after flowing for three (3) hours through a 48/64" variable choke on the 2-3/8 inch tubing, the well gauged 4404 MCFD with a calculated AOF of 9351 MCFD.

The San Juan Unit No. 61A is located 815 feet from the North Line and 1730 feet from the West Line, Section 19, Township 29 North, Range 6 West, N.M.P.M., Rio Arriba County, New Mexico. This well was spudded on January 8, 1977 and completed on February 4, 1977 in the Mesaverde Formation at a plug back depth of 5420'. The Mesaverde Formation was perforated

with one hole at each of the following depths: 4850', 4859', 4875', 4886', 4904', 4912', 4922', 4928', 4934', 4946', 5030', 5055', 5080', 5284', 5290', 5296', 5302', 5308', 5322', 5328', 5334'. These perforations were treated with 7½% HCL followed by a sand-water fracturing. The well was shut-in January 26, 1977 for 9 days with a SIPT of 813 psig and SIPC of 814 psig. On February 4, 1977, the well was tested and after flowing for three (3) hours through a 48/64" variable choke on the 2-3/8 inch tubing, the well gauged 6613 MCFD with a calculated AOF of 12,632 MCFD.

The San Juan Unit No. 65A is located 1550 feet from the South Line and 1550 feet from the East Line, Section 19, Township 29 North, Range 6 West, N.M.P.M., Rio Arriba County, New Mexico. This well was spudded on January 4, 1977 and completed on January 31, 1977 in the Mesaverde Formation at a plug back depth of 5469'. The Mesaverde Formation was perforated with one hole at each of the following depths: 4874', 4883', 4891', 4900', 4912', 4926', 4936', 4942', 4950', 4958', 5040', 5070', 5292', 5298', 5316', 5322', 5328', 5334', 5342', 5348', 5392', 5418'. These perforations were treated with 7½% HCL followed by a sand-water fracturing. The well was shut-in January 15, 1977 for 15 days with a SIPT of 910 psig and SIPC of 960 psig. On January 31, 1977, the well was tested and after flowing for three (3) hours through a 48/64" variable choke on the 2-3/8 inch tubing, the well gauged 6533 MCFD with a calculated AOF of 14,913 MCFD.

The San Juan Unit No. 70A is located 1490 feet from the North Line and 850 feet from the West Line, Section 29, Township 29 North, Range 6 West, N.M.P.M., Rio Arriba County, New Mexico. This well was spudded on November 23, 1976 and completed on December 15, 1976 in the Mesaverde Formation at a plug back depth of 5664'. The Mesaverde Formation was perforated with one hole at each of the following depths: 5088', 5096', 5106', 5112', 5121', 5130', 5136', 5142', 5164', 5172', 5180', 5208', 5470', 5502', 5508', 5516', 5526', 5538', 5546', 5552', 5560', 5608', 5637'. These perforations were treated with 7½% HCL followed by a sand-water fracturing. The well was shut-in December 8, 1976 for 7 days with a SIPT of 845 psig and SIPC of 845 psig. On December 15, 1976, the well was tested and after flowing for three (3) hours through a 3/4" variable choke on the 2-3/8 inch tubing, the well gauged 7487 MCFD with a calculated AOF of 17,153 MCFD.

The San Juan Unit No. 71A is located 1080 feet from the South Line and 1530 feet from the East Line, Section 17, Township 29 North, Range 6 West, N.M.P.M., Rio Arriba County, New Mexico. This well was spudded on September 24, 1976 and completed on October 20, 1976 in the Mesaverde Formation at a plug back depth of 5597'. The Mesaverde Formation was perforated with one hole at each of the following depths: 5070', 5116', 5124', 5130', 5137', 5234', 5262', 5376', 5464', 5470', 5476', 5482', 5492', 5498', 5504', 5510', 5518', 5524', 5532', 5550', 5556', 5586'. These perforations were treated with 7½% HCL followed by a sand-water fracturing. The well was shut-in October 8, 1976 for 12 days with a SIPT of 849 psig and SIPC of 955 psig. On October 20, 1976, the well was tested and after flowing for three (3) hours through a 3/4" variable choke on the 2-3/8 inch tubing, the well gauged 3503 MCFD with a calculated AOF of 7137 MCFD.

The San Juan Unit No. 73A is located 820 feet from the North Line and 820 feet from the West Line, Section 20, Township 29 North, Range 6 West, N.M.P.M., Rio Arriba County, New Mexico. This well was spudded on December 22, 1976 and completed on January 28, 1977 in the Mesaverde Formation at a plug back depth of 5632'. The Mesaverde Formation was perforated with one hole at each of the following depths: 5019', 5028', 5066', 5076', 5082', 5088', 5096', 5118', 5126', 5226', 5233', 5434', 5442', 5458', 5464', 5470', 5476', 5482', 5494', 5502', 5512', 5518', 5552'. These perforations were treated with 7½% HCL followed by a sand-water fracturing. The well was shut-in January 7, 1977 for 21 days with a SIPT of 860 psig and SIPC of 861 psig. On January 28, 1977, the well was tested and after flowing for three (3) hours through a 48/64" variable choke on the 2-3/8 inch tubing, the well gauged 6809 MCFD with a calculated AOF of 12,780 MCFD.

The San Juan Unit No. 74A is located 1830 feet from the South Line and 880 feet from the East Line, Section 20, Township 29 North, Range 6 West, N.M.P.M., Rio Arriba County, New Mexico. This well was spudded on December 8, 1976 and completed on January 26, 1977 in the Mesaverde Formation at a plug back depth of 5622'. The Mesaverde Formation was perforated

United States Geological Survey
Commissioner of Public Lands
Oil Conservation Commission
May 24, 1977
page eight

with one hole at each of the following depths: 5062', 5076', 5112', 5118', 5124', 5130', 5138', 5170', 5442', 5466', 5472', 5480', 5490', 5508', 5516', 5522', 5528', 5534', 5540', 5552', 5570', 5588', 5610'. These perforations were treated with 7½% HCL followed by a sand-water fracturing. The well was shut-in December 22, 1976 for 34 days with a SIPT of 720 psig and SIPC of 724 psig. On January 26, 1977, the well was tested and after flowing for three (3) hours through a 48/64" variable choke on the 2-3/8 inch tubing, the well gauged 5814 MCFD with a calculated AOF of 12,246 MCFD.

The entire San Juan 29-6 Unit Area participates in the Mesaverde Participating Area. Therefore, the Participating Area is not enlarged by virtue of these infill wells; and the percentage of participation remains the same.

Copies of this letter are being sent to the working interest owners as shown on the attached sheet.

Sincerely,



Betty R. Burnett
Supervisor of Contracts and Units

BRB:me

Attachment

cc: Working Interest Owners

SAN JUAN 29-6 UNIT
Working Interest Owners

Amoco Production Company
Attention: Mr. T. M. Curtis
Security Life Building
Denver, Colorado 80202

American Petrofina Company of Texas
Post Office Box 2159
Dallas, Texas 75221

El Paso Natural Gas Company
Attention: Mr. James R. Permenter
Post Office Box 1492
El Paso, Texas 79978

General American Oil Company of Texas
Attention: Mr. L. E. Dooley
Meadows Building
Dallas, Texas 75205

Mr. Tom Bolack
1010 North Dustin Drive
Farmington, New Mexico 87401

Mr. James E. McElvain, Executor for the
Estate of Carl R. McElvain, Deceased
309 West Jefferson Street
Morris, Illinois 60450

Koch Industries, Inc.
Post Office Box 2256
Wichita, Kansas 57201

Mr. James J. Johnston
2635 Exxon Building
Houston, Texas 77002

Phillips Petroleum Company
Attention: Mr. N. N. Beckner
Security Life Building
Denver, Colorado 80202

Mr. J. William McElvain
310 East Jefferson Street
Morris, Illinois 60450

Atlantic Richfield Company
Attention: Mr. W. A. Walther, Jr.
1860 Lincoln Street
501 Lincoln Tower Building
Denver, Colorado 80203

Southland Royalty Company
Attention: Mr. Ray Turner
1600 First National Bank Building
Fort Worth, Texas 76102

Mrs. Veva Jean Gibbard
Post Office Box 436
Sulphur, Oklahoma 73086

First National Bank of Fort Worth
Trustee under the Will of
Eula May Johnston
Post Office Box 2546
Fort Worth, Texas 76101

Beta Development Company
Attention: Mr. John Hampton
Post Office Box 1659
Midland, Texas 79701

Mrs. Catherine B. McElvain
Individually and as Executrix of the
Estate of T. H. McElvain, Deceased
Box 2148
Santa Fe, New Mexico 87501

V. A. Johnston Family Trust
Post Office Box 925
Ralls, Texas 79357

Supron Energy Corporation
Suite 1700 Campbell Centre
8350 North Central Expressway
Dallas, Texas 75206

National Cooperative Refinery Association
404 Lincoln Tower Building
Denver, Colorado 80202

Mr. J. Glenn Turner, Jr.
Independent Co-Executor of Estate
of J. Glenn Turner, Deceased
1700 Mercantile Bank Building
Dallas, Texas 75201

Ms. Mabelle M. Miller
Individually and as Independent
Executrix of the Estate of
Forrest B. Miller
1224 Lois Street
Post Office Box 1445
Kerrville, Texas 78028

Union Texas Petroleum
A Division of Allied Chemical Corporation
Attention: Mr. Donald B. Wells
Suite 1122 Lincoln Tower
Denver, Colorado 80203

Mrs. Ruth M. Vaughn
300 Caversham Road
Byrn Mawr, Pennsylvania 19010

Union Texas Petroleum
A Division of Allied Chemical Corporation
Attention: Mr. W. L. Hixon
Post Office Box 2120
Houston, Texas 77001

Texas Pacific Oil Company, Inc.
Attention: Mr. L. B. Jeffers
1700 One Main Place
Dallas, Texas 75250

Union Oil Company of California
Attention: Mr. Harold Simpson
District Operations Manager
Post Office Box 2620
Casper, Wyoming 82601

The Wiser Oil Company
Post Office Box 192
Sistersville, West Virginia 26175



United States Department of the Interior

GEOLOGICAL SURVEY
Conservation Division
Western National Bank Building
505 Marquette, NW, Suite 815
Albuquerque, New Mexico 87102

419
OCT 25 1976
October 21, 1976

Northwest Pipeline Corporation
Attention: Ms. Betty R. Burnett
One Park Central, Suite 1487
Denver, Colorado 80202

Gentlemen:

This is in regard to your Revised 1976 Drilling Program San Juan 29-6 unit, Rio Arriba County, New Mexico, dated September 7, 1976, in which you propose to delete Mesaverde well No. 38-A, NW $\frac{1}{4}$ sec. 16, T. 29N., R. 6W., from the subject drilling program and substitute therefor Mesaverde well No. 46-A, NW $\frac{1}{4}$ sec. 27, T. 29N., R. 6W. The subject revision was approved on this date subject to like approval by the appropriate State officials.

Sincerely yours,

Orig. Signed - JAMES W. SUTHERLAND

JAMES W. SUTHERLAND
Area Oil and Gas Supervisor

cc:
Durango
NMOCC, Santa Fe ← This Copy for
Com. Pub. Lands, Santa Fe

RLindau:dlk

47

NORTHWEST PIPELINE CORPORATION

ONE PARK CENTRAL, SUITE 1487
DENVER, COLORADO 80202
(303) 623-9303

June 24, 1976

Mr. Carl C. Traywick
Acting Area Oil and Gas Supervisor
United States Geological Survey
Post Office Drawer 1857
Roswell, New Mexico 88201

Mr. Ray D. Graham
Commissioner of Public Lands
State of New Mexico
Post Office Box 1148
Santa Fe, New Mexico 87501

Mr. Joe Ramey
Oil Conservation Commission
State of New Mexico
Post Office Box 2088
Santa Fe, New Mexico 87501

Re: San Juan 29-6 Unit
Initial Dakota Participating
Area "A"
Effective December 1, 1974
Rio Arriba County, New Mexico

Gentlemen:

Enclosed is a copy of the Minutes of the meeting held June 8, 1976, at the State Land Office Building in Santa Fe, New Mexico, concerning the controversy on the proposed Initial Dakota Participating Area "A" for the San Juan 29-6 Unit.

The captioned Initial Dakota Participating Area "A" was approved by the regulatory agencies on the following dates:

Oil Conservation Commission	May 13, 1976
United States Geological Survey	June 11, 1976
Commissioner of Public Lands	June 14, 1976

Copies of the attached Minutes and this letter are being sent to the working interest owners of the San Juan 29-6 Unit.

Very truly yours,


Betty R. Burnett

Supervisor of Contracts and Units

BRB:cak
Attachments
cc: Working Interest Owners

SAN JUAN 29-6 UNIT

Working Interest Owners

Amoco Production Company
Attention: Mr. T. M. Curtis
Security Life Building
Denver, CO 80202

American Petrofina Company
of Texas
P. O. Box 2159
Dallas, TX 75221

El Paso Natural Gas Company
Attention: James R. Permenter
P. O. Box 1492
El Paso, TX 79978

General American Oil Company
of Texas
Attention: Mr. L. E. Dooley
Meadows Building
Dallas, TX 75206

Mr. Tom Bolack
1010 North Dustin Drive
Farmington, NM 87401

Mr. James E. McElvain, Executor
for the Estate of Carl R.
McElvain, Deceased
309 West Jefferson Street
Morris, IL 60450

Koch Industries, Inc.
P. O. Box 2256
Wichita, KS 67201

James J. Johnston
2635 Exxon Building
Houston, TX 77002

Phillips Petroleum Company
Attention: Mr. N. N. Beckner
1000 Security Life Building
Denver, CO 80202

Mr. J. William McElvain
310 East Jefferson Street
Morris, IL 60450

Atlantic Richfield Company
Mr. W. A. Walther, Jr.
1860 Lincoln Street
501 Lincoln Tower Building
Denver, CO 80203

Aztec Oil & Gas Company
Attention: Mr. H. L. Snider, Jr.
2000 First National Bank Building
Dallas, TX 75202

Mrs. Veva Jean Gibbard
P. O. Box 436
Sulphur, OK 73086

First National Bank of Ft. Worth
Trustee U/A/W Eula May Johnston
P. O. Box 2546
Fort Worth, TX 76101

Beta Development Company
Attention: Mr. John Hampton
P. O. Box 1659
Midland, TX 79701

Mrs. Catherine B. McElvain
Individually and as Executrix of the
Estate of T. H. McElvain, Deceased
Box 2148
Santa Fe, NM 87501

V. A. Johnston Family Trust
P. O. Box 925
Ralls, TX 79357

Southern Union Production Company
Suite 1700 Campbell Centre
8350 North Central Expressway
Dallas, TX 75206

National Cooperative Refinery Assoc.
404 Lincoln Tower Building
Denver, CO 80202

J. Glenn Turner Estate
1700 Mercantile Bank Building
Dallas, TX 75201

SAN JUAN 29-6 UNIT

Working Interest Owners, Continued

Mabelle M. Miller, Individually and as Independent Executrix of the Estate of Forrest B. Miller 1224 Lois Street P.O. Box 1445 Kerrville, TX 78028	Union Texas Petroleum A Division of Allied Chemical Corporation Attention: Mr. W. D. Smith, Jr. P. O. Box 2120 Houston, TX 77001
---	--

Union Texas Petroleum A Division of Allied Chemical Corporation Attention: Donald B. Wells Suite 1122 Lincoln Tower 1860 Lincoln Street Denver, CO 80203	Texas Pacific Oil Company, Inc. Attention: Mr. L. B. Jeffers 1700 One Main Place Dallas, TX 75250
--	--

Union Oil Company of California P. O. Box 3279 Casper, Wyoming 82601	Union Oil Company of California Attention: Mr. Harold Simpson District Operations Manager P. O. Box 2620 Casper, Wyoming 82601
--	--

Mrs. Ruth M. Vaughan
300 Caversham Road
Bryn Mawr, PN 19010

The Wiser Oil Company
P. O. Box 192
Sistersville, WV 26175

San Juan 29-6 Unit Meeting Minutes
June 8, 1976

The meeting was called to order at 1:30 p.m. by Joe D. Ramey, Secretary-Director of the Oil Conservation Commission. Those in attendance were:

Joe D. Ramey - Oil Conservation Commission
William F. Carr - Oil Conservation Commission
J. E. Kapteina - Oil Conservation Commission
Betty Burnett - Northwest Pipeline
Mel S. Martin - Northwest Pipeline
Don W. Mitchell - Northwest Pipeline
Charles J. Crowley - El Paso Natural Gas Co.
Jim Permenter - El Paso Natural Gas Co.
Richard H. McPike - Southern Union Production Co.
Tom Blume - Phillips Petroleum Corporation
Joe Henderson - Phillips Petroleum Corporation
Don W. Burlow - Phillips Petroleum Corporation
Neel N. Bechner - Phillips Petroleum Corporation
D. M. Van Sickle - United States Geological Survey
Jim Gillham - United States Geological Survey
Carl Traywick - United States Geological Survey
Jerry Long - United States Geological Survey
William Oscar Jordan - New Mexico State Land Office
Ernest Valdez - New Mexico State Land Office

Mel Martin, Senior Attorney for Northwest Pipeline, presented a brief review of the history of San Juan 29-6 Unit Well No. 106 for which they are requesting a separate participating area in said unit. Well No. 106 was tested and ready to be put on production on December 31, 1974.

Jim Permenter stated El Paso's position. El Paso believes that this area should come in as an expansion to the existing participating area because El Paso believes that according to the terms of the unit agreement new participating areas are allowed only if a new pool is discovered. It is El Paso's contention that a new pool has not been discovered and they presented cross sections in support of this argument.

Phillips Petroleum Corporation's position was summarized by Tom Blume, Regional Chief Attorney. He believes that the prime question to be considered is the commerciality of the wells involved. He stated that there are four non-commercial wells separating the existing participating area and the proposed

San Juan 29-6 Unit Meeting Minutes

participating area. A line of impermeability, therefore, separates the two areas. It is Phillips' contention that the limits of a participating area are determined by the commerciality of the wells involved and the area of non-commerciality between the two commercial areas dictates there should be two participating areas in the unit. Joe Henderson presented geologic testimony to support Phillips' contention.

Southern Union Production Company concurred with Phillips and Northwest Pipeline.

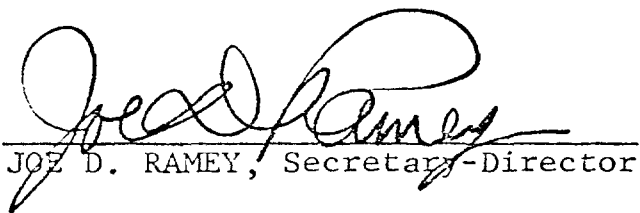
The meeting was recessed to give the Commission staff, U.S.G.S. representatives, and members of the Land Office staff an opportunity to review the arguments.

When the meeting reconvened, Mr. Ramey announced that the Oil Conservation Commission reaffirmed its approval of a separate participating area in the San Juan 29-6 Unit for the Unit Well No. 106.

The U.S.G.S. staff indicated that they would approve a separate participating area.

Oscar Jordan, attorney for the New Mexico State Land Office, stated that the Land Commissioner would announce his decision in a few days.

The meeting was adjourned at 3:20 p.m.



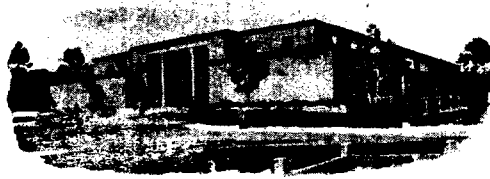
JOE D. RAMEY, Secretary-Director

June 21, 1976



PHIL R. LUCERO
COMMISSIONER

State of New Mexico



Commissioner of Public Lands

June 14, 1976

419
TELEPHONE
505-827-2748

P. O. BOX 1148
SANTA FE, NEW MEXICO 87501

Northwest Pipeline Corporation
One Park Central, Suite 1487
Denver, Colorado 80202

Re: San Juan 29-6 Unit
Rio Arriba County, New Mexico
APPLICATION FOR APPROVAL OF THE
INITIAL DAKOTA PARTICIPATING AREA "A"
Effective December 31, 1974

ATTENTION: Mr. John W. Shepardson

Gentlemen:

The Commissioner of Public Lands has this date approved the Initial Dakota Participating Area "A" for the San Juan 29-6 Unit, Rio Arriba County, New Mexico.

The initial Dakota "A" participating area embraces 480 acres described as the S/2 and NW/4 of Section 31, Township 29 North, Range 6 West, and is based on the completion of unit well No. 106.

Both the United States Geological Survey and the New Mexico Oil Conservation Commission have approved the application.

Enclosed is one approved copy for your files.

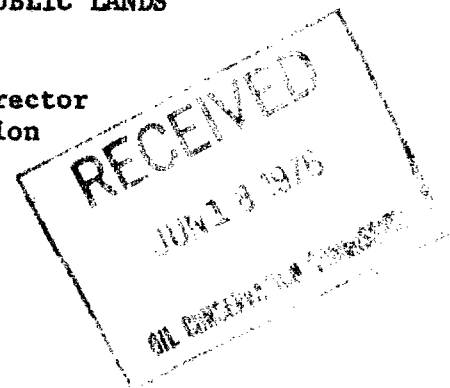
Very truly yours,

PHIL R. LUCERO
COMMISSIONER OF PUBLIC LANDS

BY:
RAY D. GRAHAM, Director
Oil and Gas Division

PRL/RDG/s
encl.

cc: USGS-Roswell, New Mexico (ltr. only)
OCC- Santa Fe, New Mexico (ltr. only)





United States Department of the Interior

GEOLOGICAL SURVEY
P. O. Drawer 1857
Roswell, New Mexico 88201

June 11, 1976

419

Northwest Pipeline Corporation
Attention: Mr. John W. Shepardson
One Park Central, Suite 1487
Denver, Colorado 80202

Gentlemen:

The initial Dakota "A" participating area for the San Juan 29-6 unit agreement, Rio Arriba County, New Mexico, was approved on June 11, 1976, by the Acting Area Oil and Gas Supervisor, U. S. Geological Survey, effective as of December 31, 1974.

The initial Dakota "A" participating area embraces 480 acres described as the NW $\frac{1}{4}$ and S $\frac{1}{2}$ of sec. 31, T. 29 N., R. 6 W., N.M.P.M., and is based on the information obtained by the December 31, 1974 completion of unit well No. 106 in the SW $\frac{1}{4}$ SW $\frac{1}{4}$ of sec. 31 as a well capable of producing unitized substances in paying quantities from the Dakota.

Copies of the approved application are being distributed to the appropriate Federal offices and one approved copy is returned herewith. You are requested to furnish all interested parties with appropriate evidence of this approval.

Sincerely yours,

(ORIG. SGD.) CARL C. TRAYWICK

CARL C. TRAYWICK
Acting Area Oil and Gas Supervisor

cc:

Durango (w/cy appln.)

BLM, Santa Fe (ltr. only)

Com. of Pub. Lands (ltr. only) ← This Copy for

Area Geologist, Roswell (ltr. only)

NMOCC, SANTA FE, (LTR. ONLY) ←

JAGillham:dlk

419
San Juan 29-6 Unit Meeting Minutes
June 8, 1976

The meeting was called to order at 1:30 p.m. by Joe D. Ramey, Secretary-Director of the Oil Conservation Commission. Those in attendance were:

Joe D. Ramey - Oil Conservation Commission
William F. Carr - Oil Conservation Commission
J. E. Kapteina - Oil Conservation Commission
Betty Burnett - Northwest Pipeline
Mel S. Martin - Northwest Pipeline
Don W. Mitchell - Northwest Pipeline
Charles J. Crowley - El Paso Natural Gas Co.
Jim Permenter - El Paso Natural Gas Co.
Richard H. McPike - Southern Union Production Co.
Tom Blume - Phillips Petroleum Corporation
Joe Henderson - Phillips Petroleum Corporation
Don W. Burlow - Phillips Petroleum Corporation
Neel N. Bechner - Phillips Petroleum Corporation
D. M. Van Sickle - United States Geological Survey
Jim Gillham - United States Geological Survey
Carl Traywick - United States Geological Survey
Jerry Long - United States Geological Survey
William Oscar Jordan - New Mexico State Land Office
Ernest Valdez - New Mexico State Land Office

Mel Martin, Senior Attorney for Northwest Pipeline, presented a brief review of the history of San Juan 29-6 Unit Well No. 106 for which they are requesting a separate participating area in said unit. Well No. 106 was tested and ready to be put on production on December 31, 1974.

Jim Permenter stated El Paso's position. El Paso believes that this area should come in as an expansion to the existing participating area because El Paso believes that according to the terms of the unit agreement new participating areas are allowed only if a new pool is discovered. It is El Paso's contention that a new pool has not been discovered and they presented cross sections in support of this argument.

Phillips Petroleum Corporation's position was summarized by Tom Blume, Regional Chief Attorney. He believes that the prime question to be considered is the commerciality of the wells involved. He stated that there are four non-commercial wells separating the existing participating area and the proposed

participating area. A line of impermeability, therefore, separates the two areas. It is Phillips' contention that the limits of a participating area are determined by the commerciality of the wells involved and the area of non-commerciality between the two commercial areas dictates there should be two participating areas in the unit. Joe Henderson presented geologic testimony to support Phillips' contention.

Southern Union Production Company concurred with Phillips and Northwest Pipeline.

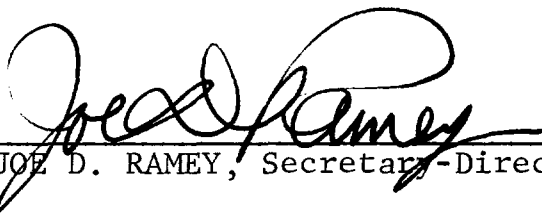
The meeting was recessed to give the Commission staff, U.S.G.S. representatives, and members of the Land Office staff an opportunity to review the arguments.

When the meeting reconvened, Mr. Ramey announced that the Oil Conservation Commission reaffirmed its approval of a separate participating area in the San Juan 29-6 Unit for the Unit Well No. 106.

The U.S.G.S. staff indicated that they would approve a separate participating area.

Oscar Jordan, attorney for the New Mexico State Land Office, stated that the Land Commissioner would announce his decision in a few days.

The meeting was adjourned at 3:20 p.m.



JOE D. RAMEY, Secretary-Director

June 21, 1976

NORTHWEST PIPELINE CORPORATION

ONE PARK CENTRAL, SUITE 1487
DENVER, COLORADO 80202
(303) 623-9303

May 28, 1976

United States Geological Survey
Acting Area Oil and Gas Supervisor
Mr. Carl C. Traywick
Post Office Drawer 1857
Roswell, New Mexico 88201

Commissioner of Public Lands
State of New Mexico
Attention: Mr. Ray D. Graham
Post Office Box 1148
Santa Fe, New Mexico 87501

Oil Conservation Commission
State of New Mexico
Attention: Mr. Joe Ramey
Post Office Box 2088
Santa Fe, New Mexico 87501

Re: San Juan 29-6 Unit
Application for Initial
Dakota Participating
Area "A"

Gentlemen:

Since there was considerable correspondence to the Working Interest Owners prior to filing the captioned application, I am enclosing copies of the letters written by Northwest, as well as letters from El Paso Natural Gas Company dated March 5, 1976, Union Oil Company of California dated March 16, 1976 and Phillips Petroleum Company dated April 21, 1976.

The enclosed letters should afford you the necessary background for the controversy that will be discussed at the meeting scheduled June 8, 1976 at 1:30 p.m.

If you need any additional information, please let me know.

Yours very truly,


Betty Burnett

Supervisor of Contracts and Units

/sjm
enclosures

General Counsel

WFC/dr

OIL CONSERVATION COMMISSION

P. O. BOX 2088

SANTA FE, NEW MEXICO 87501

May 24, 1976

Miss Betty Burnett
Northwest Pipeline Corporation
One Park Central, Suite 1487
Denver, Colorado 80202

Re: San Juan 29-6 Unit Proposed
Initial Dakota Participating
Area "A", Rio Arriba County,
New Mexico

Dear Miss Burnett:

This letter will confirm our telephone conversation of May 21 whereby you were advised that the Commission will meet with representatives of the United State Geological Survey, the New Mexico Commissioner of Public Lands and all parties affected by the proposed expansion of the above-captioned unit at 1:30 p.m. on Tuesday, June 8, 1976, in the Oil Conservation Commission Conference Room, State Land Office Building, Santa Fe, New Mexico.

It is the Commission's understanding that Northwest Pipeline Corporation will advise all unit working interest owners of this meeting.

If you have any questions concerning this matter, feel free to call on me.

Very truly yours,

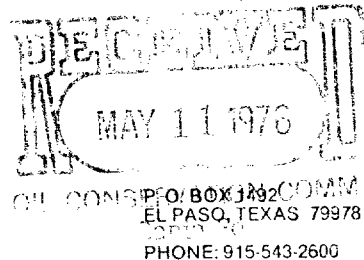
WILLIAM F. CARR
General Counsel

WFC/dr

meeting on
June 8

1:30 June 8 OCC Conf. Room

El Paso NATURAL GAS
COMPANY



May 7, 1976

Miss Betty Bennett
303-623-7103

Northwest Pipeline Corporation
One Park Central, Suite 1487
Denver, Colorado 80202

1st week in June not suitable
to Phillips

Re: San Juan 29-6 Unit
Proposed Initial Dakota
Participating Area "A"
Rio Arriba County,
New Mexico

Gentlemen:

Please refer to your letter of April 27, 1976 regarding the referenced proposed expansion. El Paso still maintains its position that a new pool or deposit has not been discovered and that the completion of well #106 should cause the Eleventh Expansion of the San Juan 29-6 Unit Dakota Participating Area rather than the establishment of a new participating area. In this regard, the Unit Agreement in Sections 11(b) and 13 provides that if a well is completed as a well capable of production in commercial quantities from a pool or deposit for which a participating area already exists, then an expansion of that participating area must occur.

Since the present controversy centers around the question of whether or not a new pool or deposit has been discovered, El Paso requests that a meeting with the United States Geological Survey, the Commissioner of Public Lands, the Oil Conservation Commission, and all affected parties be planned to resolve this issue. Please try to set up such a meeting and advise El Paso as to when and where the meeting will take place.

Yours very truly,

D. N. Canfield

D. N. Canfield
Director of Land
Energy Resource Development

ILLEGIBLE

DNC:DW:nm
SJ 29-6, 4.3, 5.0

cc: All San Juan 29-6 Unit Working Interest Owners
United States Geological Survey
Commissioner of Public Lands
Oil Conservation Commission ✓

NORTHWEST PIPELINE CORPORATION

ONE PARK CENTRAL, SUITE 1487
DENVER, COLORADO 80202
(303) 623-9303

May 21, 1976

To All Working Interest Owners:

Re: San Juan 29-6 Unit
Proposed Initial Dakota
Participating Area "A"
Rio Arriba County, New Mexico

Gentlemen:

By letter of May 7, 1976, El Paso Natural Gas Company requested a meeting be held to resolve the controversy on the proposed Initial Dakota Participating Area "A" for the San Juan 29-6 Unit.

Mr. Wm. F. Carr, Attorney for the New Mexico Conservation Commission, advised an informal meeting on this participating area problem will be held for all affected parties who wish to participate with the New Mexico Conservation Commission, United States Geological Survey, and Commissioner of Public Lands, as follows:

Date: Tuesday, June 8, 1976
Time: 1:30 p. m.
Place: Conference Room of the
New Mexico Conservation Commission
State Land Office Building
Santa Fe, New Mexico.

Very truly yours,



Betty R. Burnett
Supervisor of Contracts and Units

BRB:sjm

Return Receipt Requested

cc: United States Geological Survey
Acting Area Oil and Gas Supervisor
Mr. Carl C. Traywick
Commissioner of Public Lands
State of New Mexico
Attn: Mr. Ray D. Graham
Oil Conservation Commission
State of New Mexico
Attn: Mr. Joe Ramey

SAN JUAN 29-6 UNIT

Working Interest Owners

Amoco Production Company
Attention: Mr. T. M. Curtis
Security Life Building
Denver, CO 80202

American Petrofina Company
of Texas
P. O. Box 2159
Dallas, TX 75221

El Paso Natural Gas Company
Attention: James R. Permenter
P. O. Box 1492
El Paso, TX 79978

General American Oil Company
of Texas
Attention: Mr. L. E. Dooley
Meadows Building
Dallas, TX 75205

Mr. Tom Bolack
1010 North Dustin Drive
Farmington, NM 87401

Mr. James E. McElvain, Executor
for the Estate of Carl R.
McElvain, Deceased
309 West Jefferson Street
Morris, IL 60450

Koch Industries, Inc.
P. O. Box 2256
Wichita, KS 57201

James J. Johnston
2635 Exxon Building
Houston, TX 77002

Phillips Petroleum Company
Attention: Mr. N. N. Beckner
Security Life Building
Denver, CO 80202

Mr. J. William McElvain
310 East Jefferson Street
Morris, IL 60450

Atlantic Richfield Company
Mr. W. A. Walther, Jr.
1860 Lincoln Street
501 Lincoln Tower Building
Denver, CO 80203

Aztec Oil & Gas Company
Attention: Mr. H. L. Snider, Jr.
2000 First National Bank Building
Dallas, TX 75202

Mrs. Veva Jean Gibbard
P. O. Box 436
Sulphur, OK 73086

First National Bank of Ft. Worth
Trustee U/A/W Eula May Johnston
P. O. Box 2546
Fort Worth, TX 76101

Beta Development Company
Attention: Mr. John Hampton
P. O. Box 1659
Midland, TX 79701

Mrs. Catherine B. McElvain
Individually and as Executrix of the
Estate of T. H. McElvain, Deceased
Box 2148
Santa Fe, NM 87501

V. A. Johnston Family Trust
P. O. Box 925
Ralls, TX 79357

Southern Union Production Company
Suite 1700 Campbell Centre
8350 North Central Expressway
Dallas, TX 75206

National Cooperative Refinery Assoc.
404 Lincoln Tower Building
Denver, CO 80202

J. Glenn Turner, Jr., Independent Co-
Executor of Estate of J. Glenn Turner,
Deceased
1700 Mercantile Bank Building
Dallas, TX 75201

SAN JUAN 29-6 UNIT

Working Interest Owners, continued

Mabelle M. Miller,
Individually & as Independent
Executrix of the Estate of
Forrest B. Miller
1224 Lois Street
P. O. Box 1445
Kerrville, TX 78028

Union Texas Petroleum
A Division of Allied Chemical
Corporation
Attention: Donald B. Wells
Suite 1122 Lincoln Tower
1860 Lincoln Street
Denver, CO 80203

Mrs. Ruth M. Vaughn
300 Caversham Road
Bryn Mawr, PA 19010

Union Texas Petroleum
A Division of Allied Chemical Corp.
Attention: Mr. W. O. Hixon
P. O. Box 2120
Houston, TX 77001

Texas Pacific Oil Company, Inc.
Attention: Mr. L. B. Jeffers
1700 One Main Place
Dallas, TX 75250

Union Oil Company of California
Attention: Mr. Harold Simpson
District Operations Manager
P. O. Box 2620
Casper, WY 82601

The Wiser Oil Company
P. O. Box 192
Sistersville, WV 26175



OIL CONSERVATION COMMISSION

STATE OF NEW MEXICO
P. O. BOX 2088 - SANTA FE
87501

LAND COMMISSIONER
PHIL R. LUCERO

May 13, 1976



STATE GEOLOGIST
EMERY C. ARNOLD

DIRECTOR
JOE D. RAMEY

Northwest Pipeline Corporation
One Park Central, Suite 1487
Denver, Colorado 80202

Attention: Mr. John W. Shepardson

Re: Initial Dakota Participating
Area "A", San Juan 29-6
Unit, Rio Arriba County,
New Mexico.

Gentlemen:

This is to advise that the New Mexico Oil Conservation Commission has this date approved the Initial Dakota Participating Area "A" comprising 480 acres for the San Juan 29-6 Unit, Rio Arriba County, New Mexico, subject to like approval by the United States Geological Survey and the Commissioner of Public Lands of the State of New Mexico.

Two approved copies of the application are returned herewith.

Very truly yours,

JOE D. RAMEY
Secretary-Director

JDR/JEK/og

cc: Commissioner of Public Lands
Santa Fe, New Mexico

United States Geological Survey
Box 1857
Roswell, New Mexico

Northwest Pipeline Corporation



ONE PARK CENTRAL
SUITE 1487
DENVER, COLORADO 80202
303-623-9303

May 5, 1976

Mr. Carl C. Traywick
Acting Area Oil and Gas Supervisor
United States Geological Survey
Post Office Drawer 1857
Roswell, New Mexico 88201

Commissioner of Public Lands
State of New Mexico
Attention: Mr. Ray D. Graham
Post Office Box 1148
Santa Fe, New Mexico 87501

Oil Conservation Commission
State of New Mexico
Attention: Mr. Joe Ramey
Post Office Box 2088
Santa Fe, New Mexico 87501

Re: San Juan 29-6 Unit #14-08-001-439
Rio Arriba County, New Mexico
APPLICATION FOR APPROVAL OF THE
INITIAL DAKOTA PARTICIPATING AREA "A"
Effective December 31, 1974

Gentlemen:

As a result of a poll taken of the drilling block working interest owners, Northwest Pipeline Corporation, pursuant to the provisions of Section 11 (b) of the San Juan 29-6 Unit Agreement #14-08-001-439, approved December 5, 1952, hereby respectfully requests approval of the Initial Dakota Participating Area "A", to wit:

INITIAL DAKOTA PARTICIPATING AREA "A" -- Effective
December 31, 1974

<u>Description of Lands</u>	<u>Acres</u>
Township 29 North, Range 6 West, N.M.P.M. Section 31: S/2 & NW/4	480.00

This proposed Initial Dakota Participating Area "A" is predicated upon the determination by Northwest Pipeline Corporation that the San Juan 29-6 Unit #106 well, drilled and

completed outside the limits of the present Dakota Participating Area, is capable of producing unitized substances in paying quantities from the Dakota formation.

This well is located 2 1/4 miles west of the boundary of the present Dakota Participating Area and 3 3/4 miles west of the nearest commercial Dakota completion, Well #87 in the NE/4 of Section 33. Based on the results of the above test and related geological data, it appears the San Juan 29-6 Unit #106 well should have producing characteristics similar to the west and south offset wells in the San Juan 29-7 Unit and San Juan 29-8 Unit.

Pertinent well data for the San Juan 29-6 Unit #106 well is as follows:

Northwest Pipeline Corporation's San Juan 29-6 Unit #106 well is located 800' from the south line and 990' from the west line, Section 31, Township 29 North, Range 6 West, N.M.P.M., Rio Arriba County, New Mexico. The well was spudded on December 8, 1974, and completed December 31, 1974, in the Dakota formation at a drilled total depth of 8100' and a cleaned out total depth of 8050'. The "Dakota Producing Interval" was perforated in four (4) zones with eighteen holes per zone. The zones are: 7882'-7894', 7902'-7908', 7922'-7928', and 7998'-8016'. These zones were perforated after spotting 300 gallons of 7 1/2% hydrochloric acid. The gross interval from 7882' to 8016' was hydraulically fractured with 50,000 pounds of 20/40 sand and 51,450 gallons of treated water, followed by a flush of 128 barrels of water. During the treatment, three (3) sets of eighteen (18) 7/8-inch RCN balls were dropped. The well was shut-in on December 24, 1974, and tested on December 31, 1974, for three hours through a 0.75-inch choke on the 4 1/2-inch casing. The test results were:

Shut-in	7 days
SIPC	2,522 psia
SIPT	2,515 psia
FPC	291 psia
WPT	468 psia
Choke Volume	3,718 MCF/Day @ 15.025 psia
Absolute Open Flow	3,817 MCF/Day @ 15.025 psia

In support of this application, the following listed Exhibits are made a part hereof:

EXHIBIT "A"

Ownership map reflecting the boundaries of the Unit and the proposed Initial Dakota Participating Area "A" within the San Juan 29-6 Unit.

EXHIBIT "B"

Geological Report on the proposed Initial Dakota Participating Area "A" within the San Juan 29-6 Unit.

EXHIBIT "C"

Figure No. 1: San Juan 29-6 Unit Dakota Structure Map.
Figure No. 2: San Juan 29-6 Unit Dakota Isopach Map.

EXHIBIT "D"

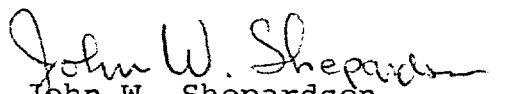
Schedule of San Juan 29-6 Unit Dakota production.

Attached hereto is Schedule I-A showing the proposed Initial Dakota Participating Area "A" in the San Juan 29-6 Unit Area. This Schedule describes the Participating Area, shows the percentage of unitized substances allocated to each unitized tract, and the percentage of ownership in the tracts.

If the proposed Initial Dakota Participating Area "A" meets with your approval, please indicate such approval in the space provided on the attached sheet and return an approved copy hereof for our files.

Copies of this letter and the Schedule are being sent to the working interest owners shown on the attached sheet.

Very truly yours,


John W. Shepardson
Land Manager

BRB:cak
Enclosures
cc: Working Interest Owners

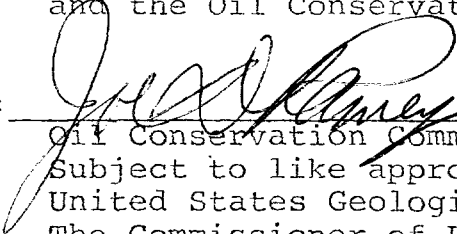
APPROVED: _____ DATE: _____

Area Oil and Gas Supervisor
United States Geological Survey
Subject to like approval by the
Commissioner of Public Lands and
the Oil Conservation Commission

APPROVED: _____ DATE: _____

Commissioner of Public Lands
Subject to like approval by the
United States Geological Survey
and the Oil Conservation Commission

APPROVED: _____ DATE: May 13, 1976


Oil Conservation Commission
Subject to like approval by the
United States Geological Survey and
The Commissioner of Public Lands.

The foregoing approvals are for the Initial Dakota
Participating Area "A" for the San Juan 29-6 Unit
#14-08-001-439, Rio Arriba County, New Mexico.

SAN JUAN 29-6 UNIT

Working Interest Owners

Amoco Production Company
Attention: Mr. T. M. Curtis
Security Life Building
Denver, CO 80202

American Petrofina Company
of Texas
P. O. Box 2159
Dallas, TX 75221

El Paso Natural Gas Company
Attention: James R. Permenter
P. O. Box 1492
El Paso, TX 79978

General American Oil Company
of Texas
Attention: Mr. L. E. Dooley
Meadows Building
Dallas, TX 75205

Mr. Tom Bolack
1010 North Dustin Drive
Farmington, NM 87401

Mr. James E. McElvain, Executor
for the Estate of Carl R.
McElvain, Deceased
309 West Jefferson Street
Morris, IL 60450

Koch Industries, Inc.
P. O. Box 2256
Wichita, KS 57201

James J. Johnston
2635 Exxon Building
Houston, TX 77002

Phillips Petroleum Company
Attention: Mr. N. N. Beckner
Security Life Building
Denver, CO 80202

Mr. J. William McElvain
310 East Jefferson Street
Morris, IL 60450

Atlantic Richfield Company
Mr. W. A. Walther, Jr.
1860 Lincoln Street
501 Lincoln Tower Building
Denver, CO 80203

Aztec Oil & Gas Company
Attention: Mr. H. L. Snider, Jr.
2000 First National Bank Building
Dallas, TX 75202

Mrs. Veva Jean Gibbard
P. O. Box 436
Sulphur, OK 73086

First National Bank of Ft. Worth
Trustee U/A/W Eula May Johnston
P. O. Box 2546
Fort Worth, TX 76101

Beta Development Company
Attention: Mr. John Hampton
P. O. Box 1659
Midland, TX 79701

Mrs. Catherine B. McElvain
Individually and as Executrix of the
Estate of T. H. McElvain, Deceased
Box 2148
Santa Fe, NM 87501

V. A. Johnston Family Trust
P. O. Box 925
Ralls, TX 79357

Southern Union Production Company
Suite 1700 Campbell Centre
8350 North Central Expressway
Dallas, TX 75206

National Cooperative Refinery Assoc.
404 Lincoln Tower Building
Denver, CO 80202

J. Glenn Turner, Jr., Independent Co-
Executor of Estate of J. Glenn Turner,
Deceased
1700 Mercantile Bank Building
Dallas, TX 75201

SAN JUAN 29-6 UNIT

Working Interest Owners, continued

Mabelle M. Miller,
Individually & as Independent
Executrix of the Estate of
Forrest B. Miller
1224 Lois Street
P. O. Box 1445
Kerrville, TX 78028

Union Texas Petroleum
A Division of Allied Chemical
Corporation
Attention: Donald B. Wells
Suite 1122 Lincoln Tower
1860 Lincoln Street
Denver, CO 80203

Mrs. Ruth M. Vaughn
300 Caversham Road
Bryn Mawr, PA 19010

Union Texas Petroleum
A Division of Allied Chemical Corp.
Attention: Mr. W. O. Hixon
P. O. Box 2120
Houston, TX 77001

Texas Pacific Oil Company, Inc.
Attention: Mr. L. B. Jeffers
1700 One Main Place
Dallas, TX 75250

Union Oil Company of California
Attention: Mr. Harold Simpson
District Operations Manager
P. O. Box 2620
Casper, WY 82601

The Wiser Oil Company
P. O. Box 192
Sistersville, WV 26175

EXHIBIT "B"


San Juan 29-6 Unit
Rio Arriba County, New Mexico

Geologic Report

Dakota Producing Interval
Proposed Initial Dakota Participating
Area No. "A"

NORTHWEST PIPELINE CORPORATION

BY:

A handwritten signature in dark ink, appearing to read "Kenneth J. Stracke", is written over a horizontal line.

Kenneth J. Stracke

Assistant Director of Production

EXHIBIT "B"

SAN JUAN 29-6 UNIT RIO ARriba COUNTY, NEW MEXICO

GEOLOGIC REPORT DAKOTA PARTICIPATING INTERVAL

PROPOSED INITIAL DAKOTA PARTICIPATING AREA NO. "A"

INTRODUCTION

The San Juan 29-6 Unit is located in the east-central portion of the San Juan Basin. The Unit area, which contains 22,509.17 acres, consists of all Township 29 North, Range 6 West, New Mexico Principal Meridian, Rio Arriba County, New Mexico.

Within the San Juan 29-6 Unit the "Dakota Producing Interval" has had 38 tests with the following results: 31 wells are interpreted to be capable of producing unitized substances in commercial quantities, 5 wells are considered to be non-commercial completions, 1 well was temporarily abandoned in October 1961, and 1 test is plugged and abandoned in the Dakota formation. The "Dakota Producing Interval" as defined by the New Mexico Oil Conservation Commission in Rule 25, Order No. R-1670-C, is "...from the base of the Greenhorn limestone to a point 400 feet below the base of the said formation and consisting of the Graneros formation, the Dakota formation, and the productive upper portion of the Morrison formation."

Included as a part of this report are two maps entitled Exhibit "C." Exhibit "C" Figure No. 1 shows the subsurface structure of the "Dakota Producing Interval" as depicted by using the top of the Graneros shale as the mapping horizon and mean sea level as the datum plane. This exhibit indicates the Dakota interval to be dipping gently northeastward towards the axis of the Basin. The dip is less than one degree with minor structural irregularities in the area of greater well density. However, the accumulation of hydrocarbons within this unit is considered to be stratigraphically rather than structurally controlled. Exhibit "C", Figure No. 2 is an isopachous map of the net reservoir sands which are interpreted to be present within the "Dakota Producing Interval". Detailed discussions of the stratigraphy and lithology of the "Dakota Producing Interval" in the general area of the San Juan 29-6 Unit may be found in geologic reports which have been previously submitted for the Gobernador Area and expansions of the Dakota Participat-

ing Areas of adjacent units.

Also included with this report is Exhibit "D" Table No. 1 which is a tabulation of the San Juan 29-6 Unit Dakota gas production. This exhibit shows by well the cumulative production to January 1, 1975; the 1975 monthly production for January through November inclusive; and the cumulative production to December 1, 1975. As of this date, the wells in the Participating Area have produced 17,760,191 MCF, the non-participating wells have produced 1,872,176 MCF, for a total production of 19,632,367 MCF from all of the Dakota wells within the Unit.

PROPOSED INITIAL DAKOTA PARTICIPATING AREA NO. "A"

Effective-Date: Date of First Production
December 31, 1974

Proposed Initial Acreage:

Township 29 North, Range 6 West,
Section 31: S/2 and NW/4

The creation of the Proposed Initial Dakota Participating Area No. "A" is based upon the completion by Northwest Pipeline Corporation of the San Juan 29-6 Unit No. 106 well which is located 800 feet from the south line and 990 feet from the west line, Section 31, Township 29 North, Range 6 West, N.M.P.M., Rio Arriba County, New Mexico. The well was spudded on December 8, 1974 and completed December 31, 1974 in the Dakota formation at a drilled total depth of 8100 feet and a cleaned out total depth of 8050 feet. The "Dakota Producing Interval" was perforated in four (4) zones with eighteen holes per zone. The zones are: 7882'-7894', 7902'-7908', 7922'-7928' and 7998'-8016'. These zones were perforated after spotting 300 gallons of 7 1/2% hydrochloric acid. The gross interval from 7882 feet to 8016 feet was hydraulically fractured with 50,000 pounds of 20/40 sand and 51,450 gallons of treated water, followed by a flush of 128 barrels of water. During the treatment, three (3) sets of eighteen (18) 7/8 inch RCN balls were dropped. The well was shut-in on December 24, 1974 and tested on December 31, 1974 for three hours through a 0.75 inch choke on the 4 1/2 inch casing. The test results were:

Shut-in	7 days
SIPC	2,522 psia
SIPT	2,515 psia
FPC	291 psia
WPT	468 psia

Choke Volume	3,718 MCF/Day @ 15.025 psia
Absolute Open Flow	3,817 MCF/Day @ 15.025 psia

The establishment of the Proposed Initial Dakota Participating Area No. "A" is predicated upon the following facts and geologic inferences.

1. The San Juan 29-6 Unit No. 106 well is located 2 1/4 miles west of the boundary of the present Dakota Participating Area, (See Exhibit "C", Figure No. 1 and 2) and 2 3/4 miles west of the nearest commercial Dakota completion, Well No. 87, NE/4 Section 33.

2. Four (4) non-commercial Dakota wells define the western boundary of the present Dakota participating area. They are:

<u>Well No. & Location</u>	<u>Date of 1st Delivery</u>	<u>12/1/75 Cumulative Production</u>
No. 94 - SW/4, Section 16	1/24/66	222,761 MCF
No. 47 - NE/4, Section 28	1959 (Temporarily Abandoned October 1961)	80,209 MCF
No. 105 - SW/4, Section 28	6/26/73	26,207 MCF
No. 88 - SW/4, Section 33	7/16/65	368,844 MCF

3. The San Juan 29-6 Unit No. 106 well should have producing characteristics similar to the west and south offset wells in San Juan 29-7 Unit and San Juan 28-6 Unit. A summary of the production history of these commercial wells follows:

San Juan 29-7 Unit No. 105

NE/4, 36-29N-7W

Date of First Delivery: January, 1974

1/1/75 Cumulative Production: 215,809 MCF

Days Produced: 345

Average Daily Production: 626 MCF/Day

San Juan 29-7 Unit No. 106

SW/4, 36-29N-7W

Date of First Delivery: September, 1973

1/1/75 Cumulative Production: 220,493 MCF

Days Produced: 324

Average Daily Production: 681 MCF/Day

San Juan 28-6 Unit No. 184

SW/4, 7-28N-6W

Date of First Delivery: September, 1973

1/1/75 Cumulative Production: 235,692 MCF

Days Produced: 296

Average Daily Production: 796 MCF/Day

4. The lenticularity of the sandstone members of the "Dakota Producing Interval" and the rapid lateral changes in porosity, permeability and effective porosity of the same member have been recognized for many years. The forty feet of net reservoir sand ascribed to San Juan 29-6 Unit No. 106 well is found in the Graneros and Dakota "A" zones. The Graneros net sand decreases both eastward and northeastward from well No. 106. The Dakota "A" net sand decreases northeasterly and increases slightly to the east of well No. 106. Present data does not justify the inference that the acreage intervening between the present Dakota Participating Area and the proposed participating Area No. "A" is capable of producing unitized substances in paying quantities.

NORTHWEST PETROLEUM CORPORATION
UNIT AREA EXPANSION SCHEDULE

SCHEDULE I-A

SERIAL NUMBER	DESCRIPTION	NUMBER OF ACRES	OWNERSHIP	DRILLING BLOCK	PERCENTAGE	PERCENTAGE COMMITTED	PRESENT ACTUAL PARTICIPATION
---------------	-------------	--------------------	-----------	----------------	------------	-------------------------	---------------------------------

RECAPITULATION

Description of lands in participating area:

Township 29 North, Range 6 West, N.M.P.M.
Section 31: NW/4 & S/2

Total number of acres in participating area: 480.00
Total number of acres committed to participating area: 480.00

Effective December 31, 1974

INIT AREA EXPANSION SCHEDULE

SCHEDULE I-A
INITIAL EXPANDED PARTICIPATING AREA "A" FOR DAKOTA FORMATION
SAN JUAN 29-6 UNIT AREA

SERIAL NUMBER	DESCRIPTION	NUMBER OF ACRES	DRILLING BLOCK		PERCENTAGE COMMITTED	PRESENT ACTUAL PARTICIPATION
			OWNERSHIP	PERCENTAGE		
<u>Tract 5</u>						
SF-078426	T-29-N, R-6-W Sec. 31: NW/4 & N/2 SE/4	240.00	Royalty; Working Interest: Southern Union Production Company; ORRI;	12.50% 83.50% 4.00% <u>100.00%</u>	12.50% 83.50% 4.00% <u>100.00%</u>	50.000000%
<u>Tract 14-A</u>						
NM-03040-A	T-29-N, R-6-W Sec. 31: SW/4 & S/2 SE/4	240.00	Royalty; Working Interest: Phillips Petroleum Co.; ORRI;	12.50% 82.50% 5.00% <u>100.00%</u>	12.50% 82.50% 5.00% <u>100.00%</u>	50.000000%
<u>Total</u>						
				<u>100.00%</u>	<u>100.00%</u>	

Effective December 31, 1974