

# Sunray DX Oil Company

Tulsa, Oklahoma 74102

Production Department



October 19, 1965

William R. Loar  
Manager, Unitization  
and Conservation

PG-6

3342

Gilbert, White & Gilbert  
P. O. Box 787  
Santa Fe, New Mexico

Attention: Mr. Charles White

Re: Dodd Waterflood  
Grayburg-Jackson Pool  
Eddy County, New Mexico

Dear Charlie:

Enclosed are six copies of two separate application for permission to waterflood the Metex Zone of the Grayburg Formation and the Keely Zone of the San Andres Formation under our Dodd Leases in Eddy County, New Mexico. Although both zones are in the Grayburg-Jackson Pool, they are not in the same formation and Sunray intends to keep the injection facilities separate. We would like to have both of these Applications on the same docket and they may be combined into one hearing if the Commission so desires. We have no objection to the Commission considering this as one flood.

If the Applications are in order, please file them with the State Engineer and the Oil Conservation Commission.

Very truly yours,

SUNRAY DX OIL COMPANY

*William R. Loar*

William R. Loar

*by R. C. Spunk*

RCS/rwd  
Enclosures

GAMMA RAY  
RADIATION INTENSITY INCREASES

NEUTRON  
RADIATION INTENSITY INCREASES

Well 3342

Swabbed 7 BOPD

Swabbed 5 BOPD

Swabbed 3 BOPD

Swabbed 4 BOPD

KEELY

R. D. 3320.5'

T. D. 3323.5'

GENERAL AMERICAN OIL CO. OF TEXAS

BURCH "C" N°1

GRAYBURG KEELY

R. D. 3321.5'

GAMMA RAY  
RADIATION INTENSITY INCREASES →

2700

2800

2900

3000

3100

3200

3300

NEUTRON  
RADIATION INTENSITY INCREASES →

DODD A No. 9

*Kelly*

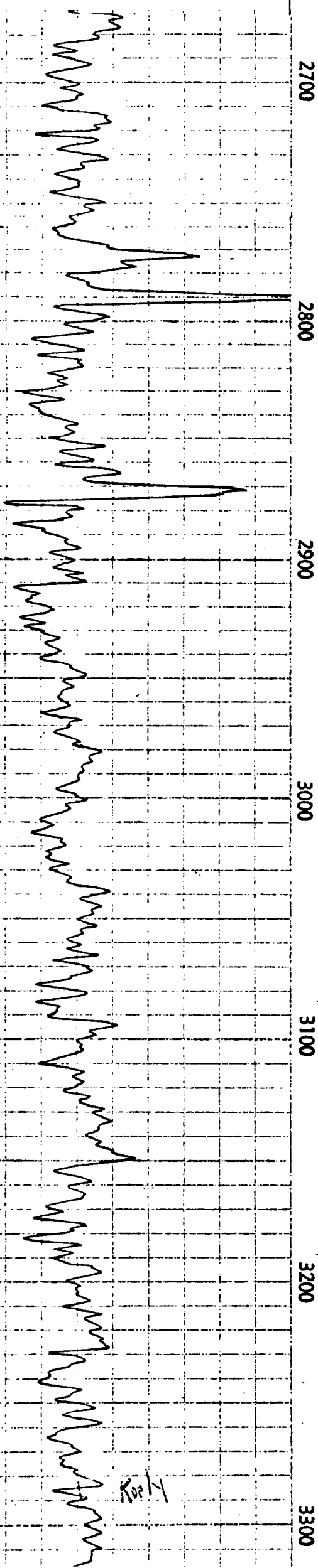
FLUID LEVEL

← 1.5 FEET

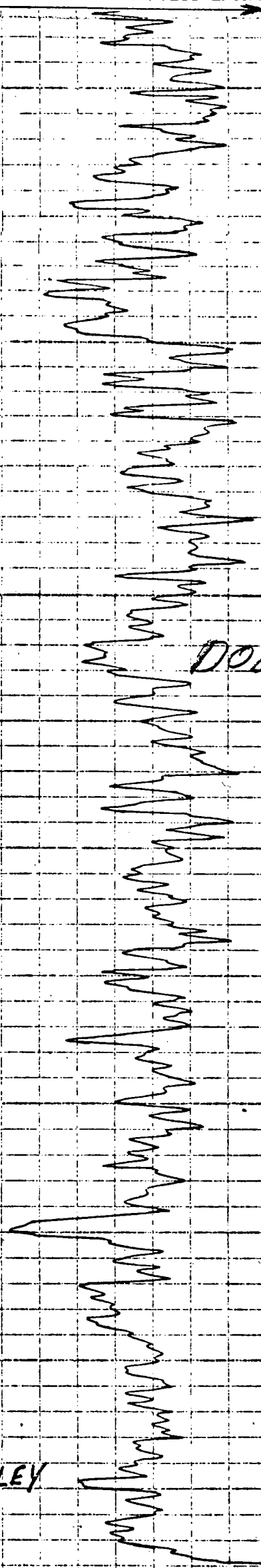
22 2311 D

GAMMA RAY  
RADIATION INTENSITY INCREASES

NEUTRON  
RADIATION INTENSITY INCREASES



KEELEY



DODD A No. 10  
KEELEY

KEELEY

3362

GAMMA RAY  
RADIATION INTENSITY INCREASES

NEUTRON  
RADIATION INTENSITY INCREASES

3100

3200

5

1

1/2"

3248 - Top Reel

2"

3"

FLUID LEVEL

R. D. 3281'

T. D. 3284'

R. D. 3282'

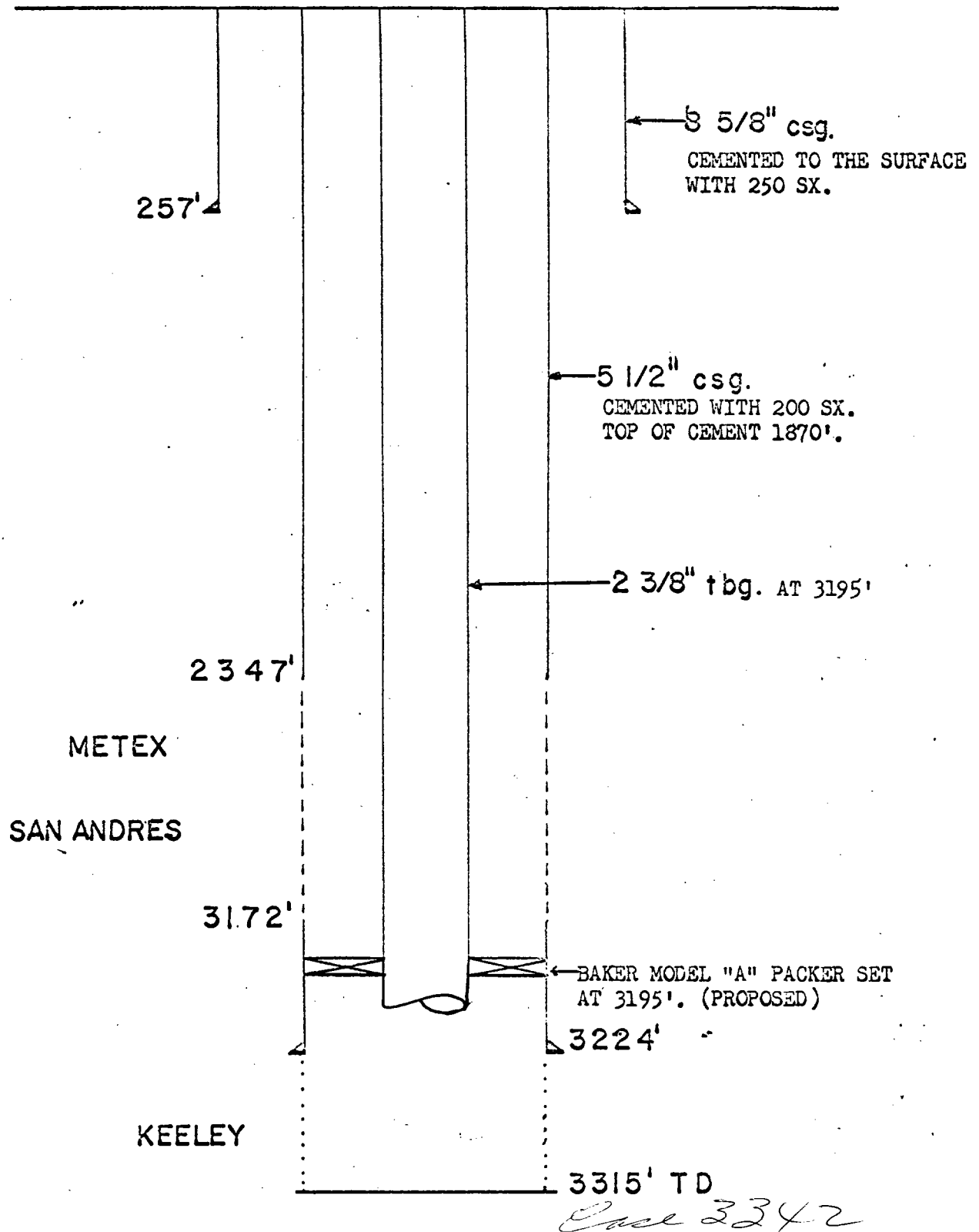
SUNRAY MID CONTINENT OIL COMPANY

DODD "A" N°11

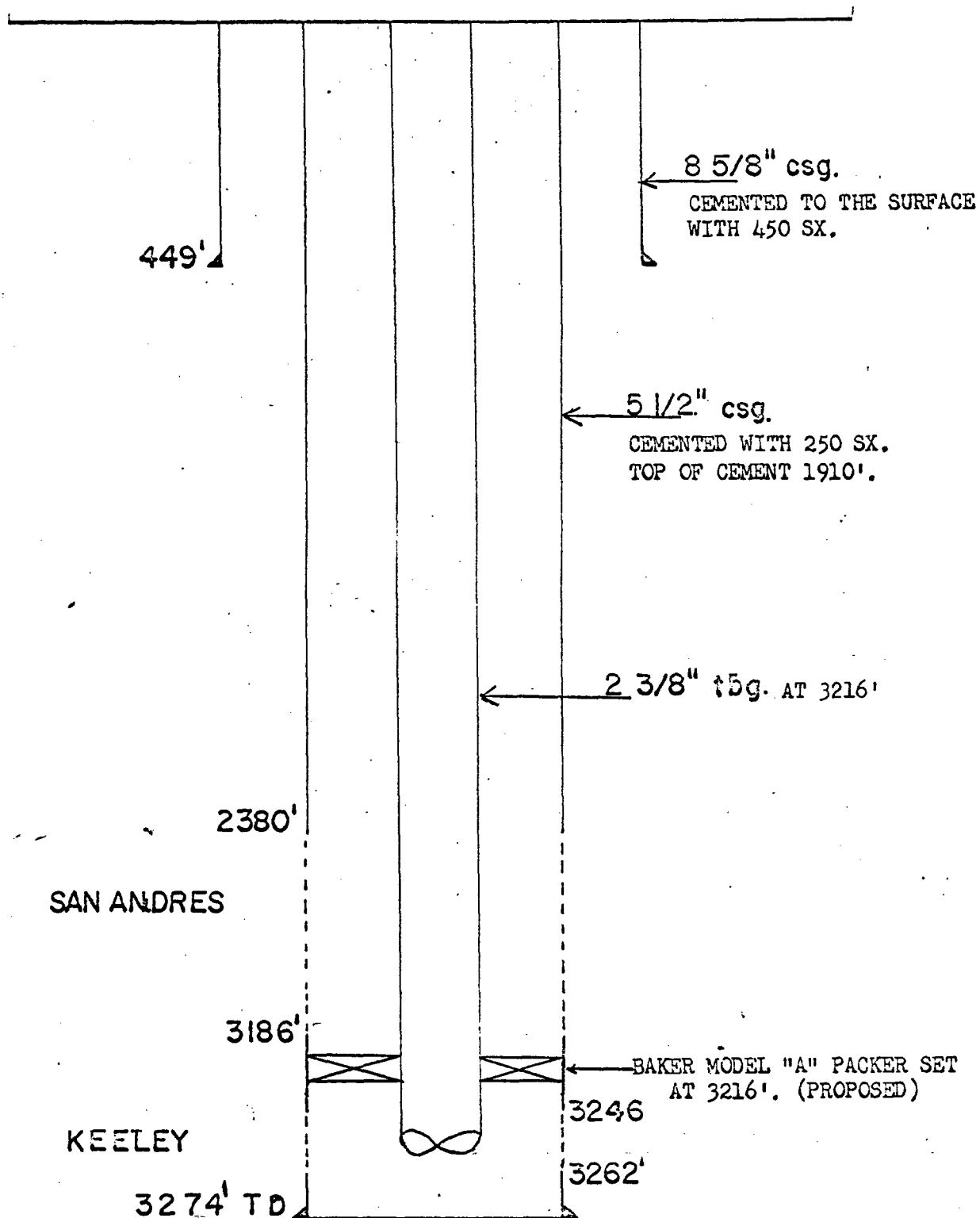
GRAYBURG JACKSON

70 3342

D O D D A No. 9

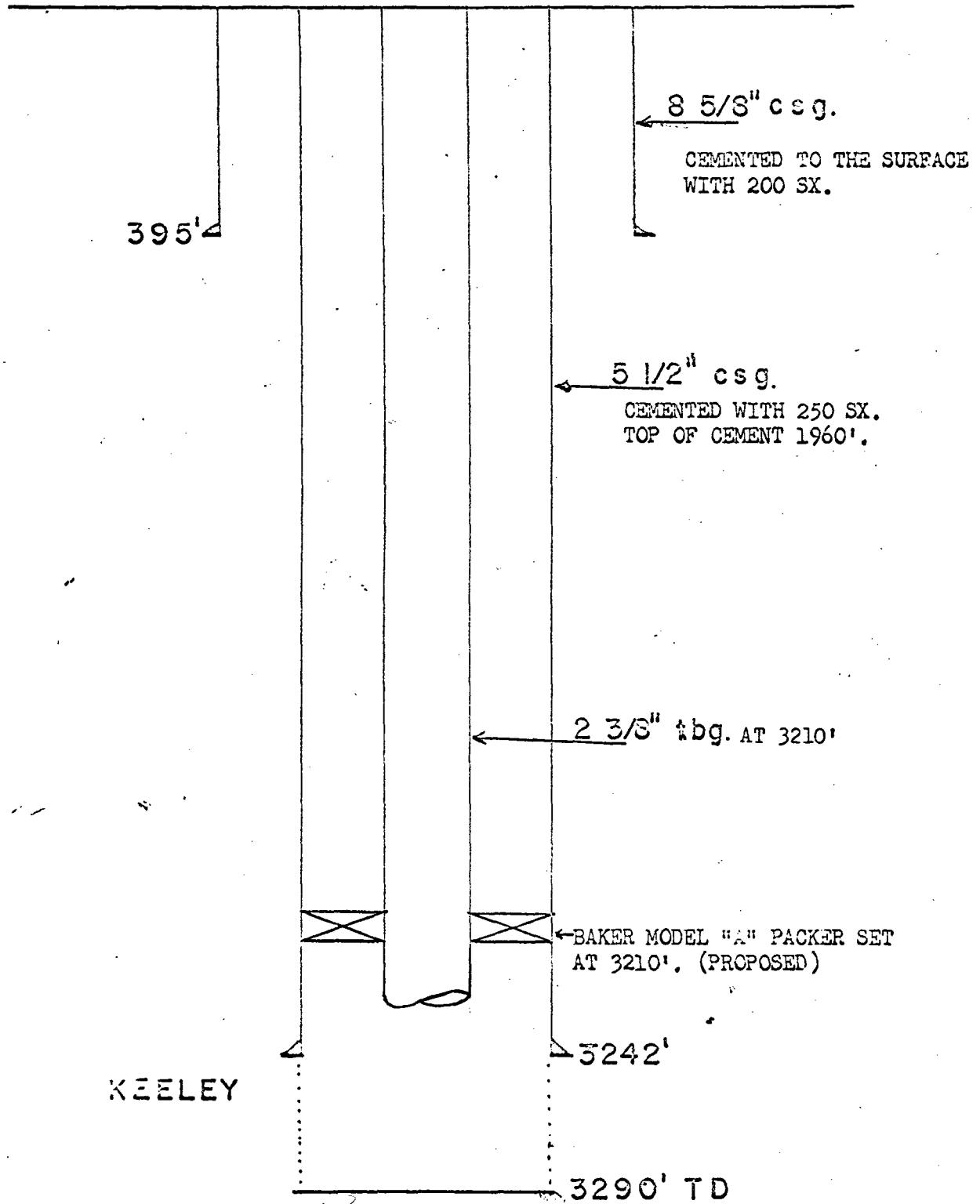


D O D D A No. 10



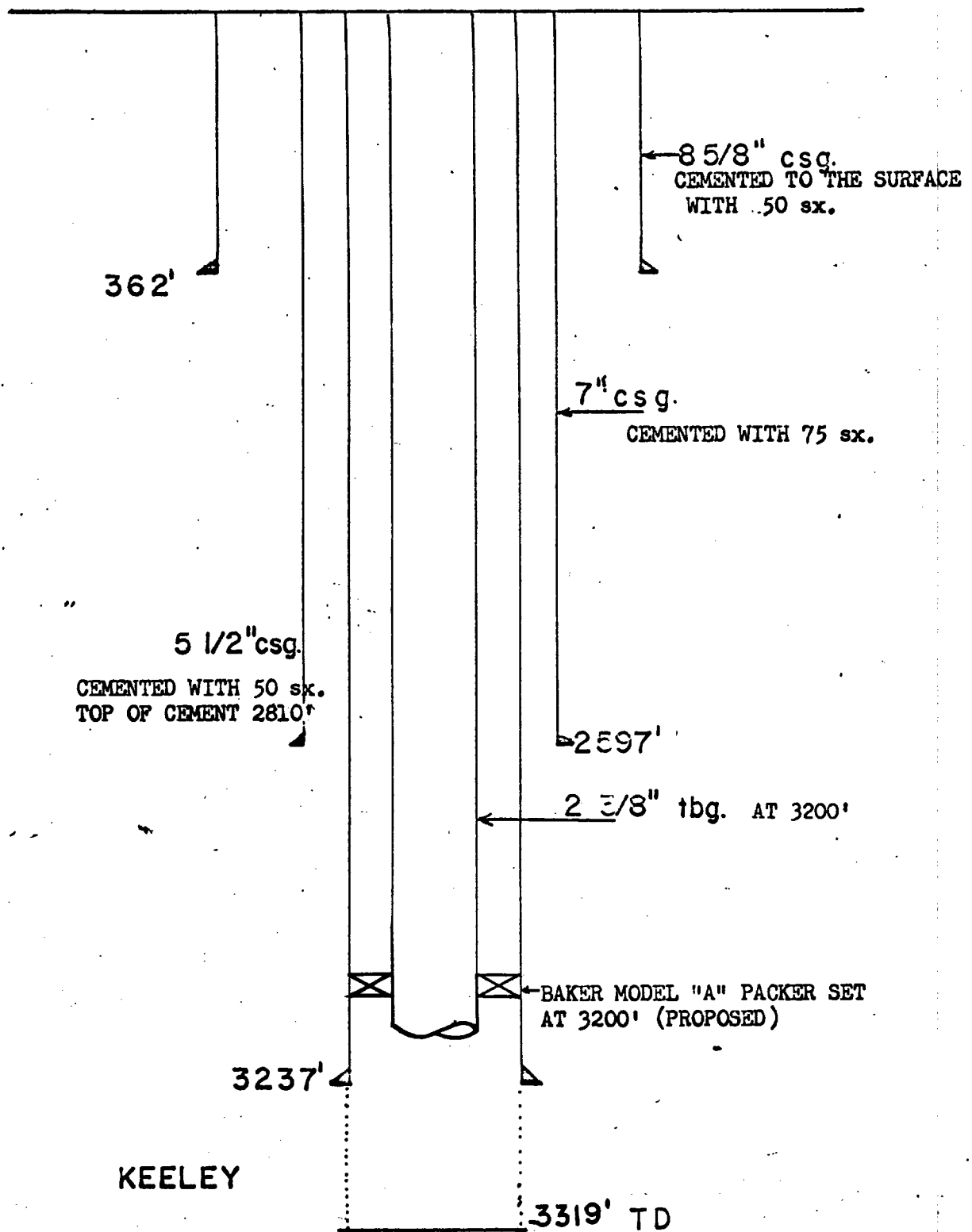
1-3347

D O D D A No. 11





GENERAL AMERICAN  
BURCH "C" No. 1

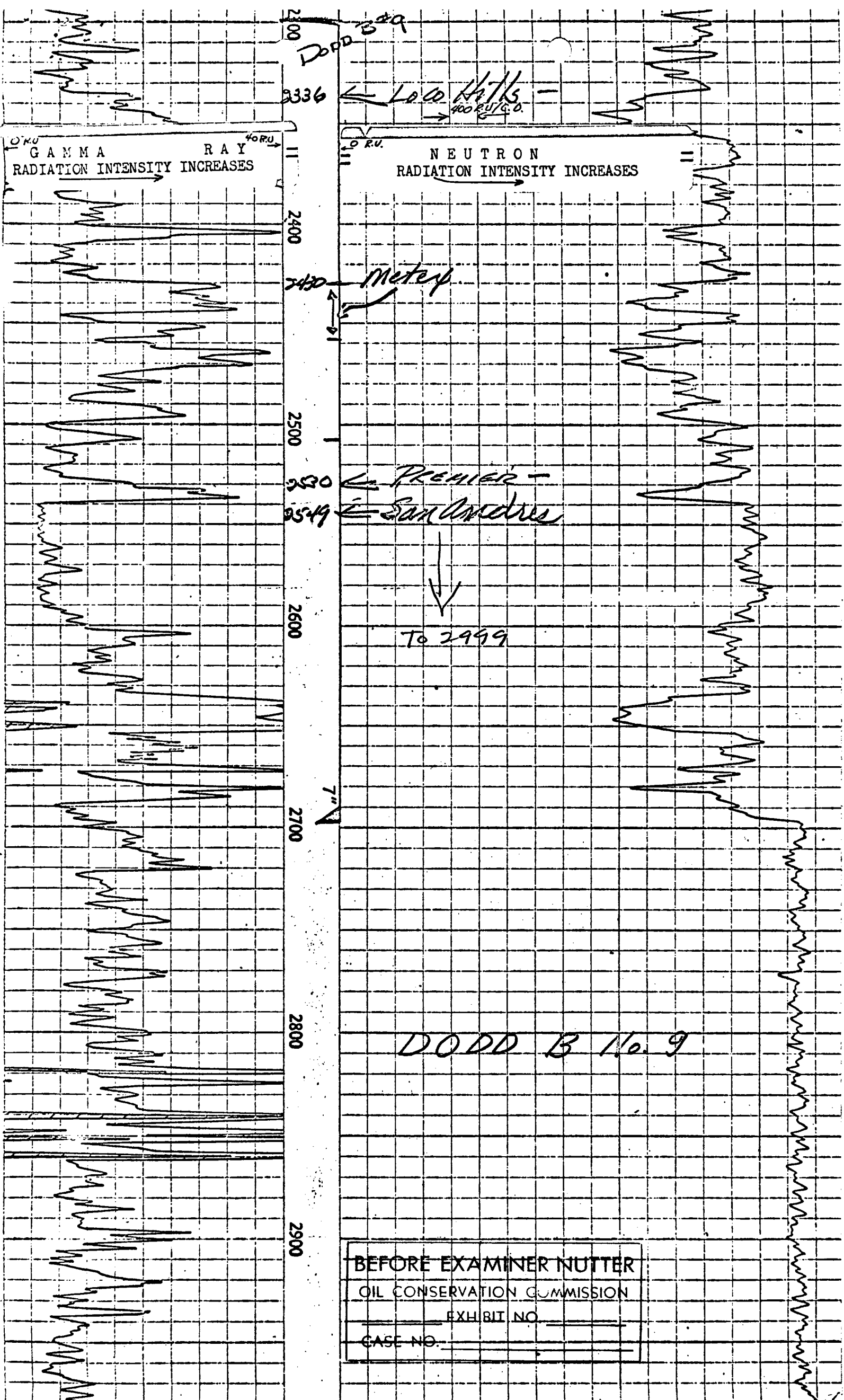


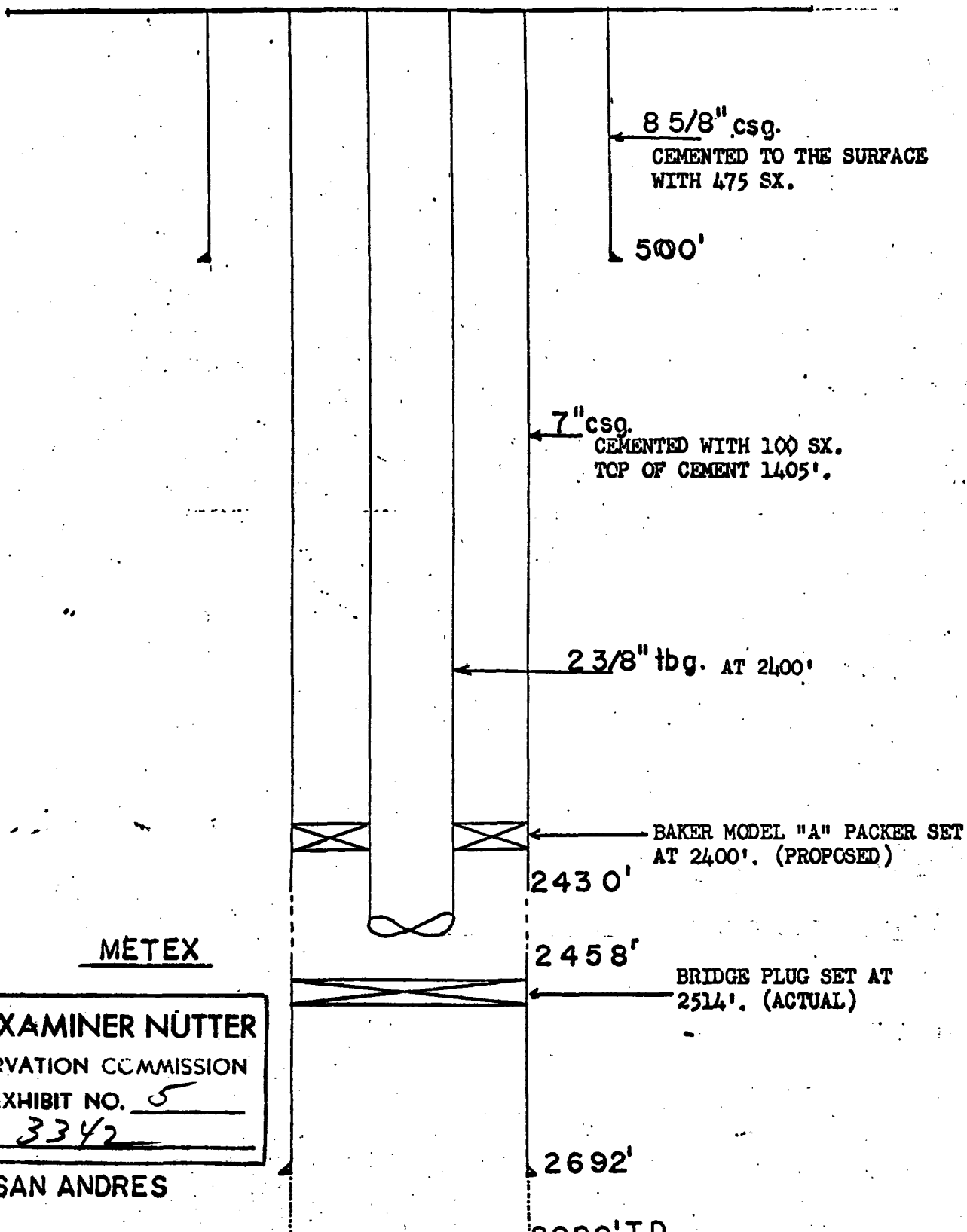
## ADDRESSEE LIST

## Dodd "A" &amp; "B" Waterflood Project

<u>OPERATOR</u>	<u>ADDRESS</u>
Ambassador Oil Co.	200 Petr. Bldg., Abilene, Texas
Bassett and Birney	323 Carper Bldg., Artesia, N. M.
Collier Oils Inc.	P. O. Box 3988, Odessa, Texas
Continental Oil Co.	P. O. Box 460, Hobbs, N. M.
El Paso Nat. Gas Prod.	P. O. Box 3986, Odessa, Texas
Fair Oil Co.	P. O. Box 5445, Midland, Texas
O. F. Featherstone	236 Petr. Bldg., Roswell, N. M.
Gen. Amer. Oil Co.	P. O. Box 416, Loco Hills, N. M.
Gulf Oil Co.	P. O. Box 670, Hobbs, N. M.
International Oil & Gas	P. O. Box 427, Artesia, N. M.
Leonard Oil Co.	10th Fl., Sec. Ntl. Bnk. Bldg., Roswell, N. M.
E. J. McCurdy	1813 Clayton, Artesia, N. M.
Nearburg & Ingram	P. O. Box 1757, Roswell, N. M.
Newmont Oil Co.	Rowley Bldg., Artesia, N. M.
Sinclair Oil	P. O. Box 1920, Hobbs, N. M.
Skelly Oil Co.	P. O. Box 730, Hobbs, N. M.
Tenneco Oil Co.	18th Fl., Wilco Bldg., Midland, Texas
Texaco, Inc.	P. O. Box 728, Hobbs, N. M.
Yates Petr. Corp.	309 Carper Bldg., Artesia, N. M.

*Page 3342*





BEFORE EXAMINER NÜTTER

OIL CONSERVATION COMMISSION

EXHIBIT NO. 5

CASE NO. 3342

SAN ANDRES

XERO COPY XERO COPY XERO COPY XERO COPY

P. O. Box 1416  
Roswell, New Mexico  
November 3, 1965

Mr. Frank Irby  
State Engineer Office  
Capital Building  
Santa Fe, New Mexico

Re: Dodd Leases (PG-6)  
Grayburg-Jackson Pool  
Eddy County, New Mexico

Dear Mr. Irby:

The purpose of this transmittal is to confirm our telephone conversation of November 2, 1965, concerning the mechanics of waterflooding the subject leases.

The produced water from the Dodd "A" and Dodd "B" leases is currently disposed of into two earthen pits, one located on each of the leases. It is proposed to continue this disposition of produced water which currently amounts to about 30 bbls. per day on each lease until a sufficient amount is available to supply the required injection volume of one injection well or an estimated 100-200 BPD. This will mean each pit will take about 50-100 BPD until this condition is reached. Otherwise fresh water will be the sole injection source and purchased from Yucca Water Company of Lovington, New Mexico. At no time during the life of the project do we propose to co-mingle fresh and produced water.

In regards to cement lining or internal protection of injection tubing strings or systems, we propose to use unprotected pipe and tubing where fresh water is to be handled. When produced water injection begins, the systems handling this water and the tubing strings of the wells in which produced water is injected will be internally lined with cement.

BEFORE EXAMINER NUTTER

OIL CONSERVATION COMMISSION

EXHIBIT NO. VII

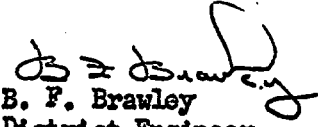
CASE NO. 3342

Mr. Frank Irby  
November 3, 1965  
Page 2

Please accept our apologies for previously supplying erroneous information regarding the above. If we can be of any further assistance in this matter, please advise. This waterflood will be handled by our Roswell Production District, P. O. Box 1416, Roswell, New Mexico.

Yours very truly,

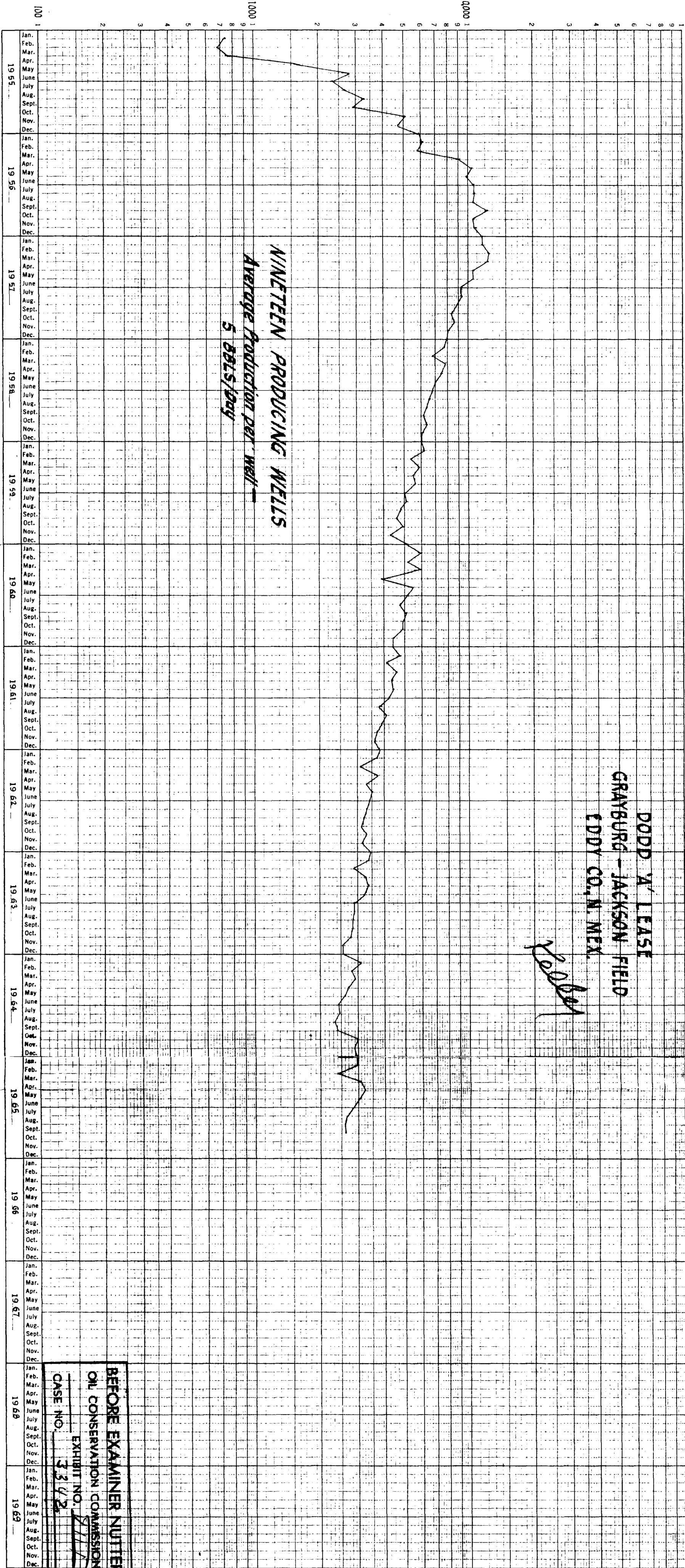
SUNRAY OIL COMPANY

  
B. F. Brawley  
District Engineer

HFB:sk

cc: R. C. Spurlock

PRODUCTION - BBLs OIL / MONTH



BEFORE EXAMINER NUTTER  
OIL CONSERVATION COMMISSION  
EXHIBIT NO. 2111  
CASE NO. 3342