

GAMMA RAY  
RADIATION INTENSITY INCREASES

NEUTRON  
DIATION INTENSITY INCREASES

3100

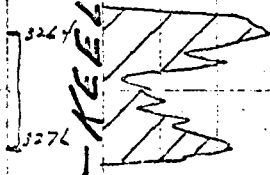
3200

5  
1  
2"

3348 - Top Reel

BEFORE EXAMINER NUTTER  
OIL CONSERVATION COMMISSION  
EXHIBIT NO. 3  
CASE NO. 3372

2"



3"

FLUID LEVEL

R. D. 3281'

T. D. 3284'

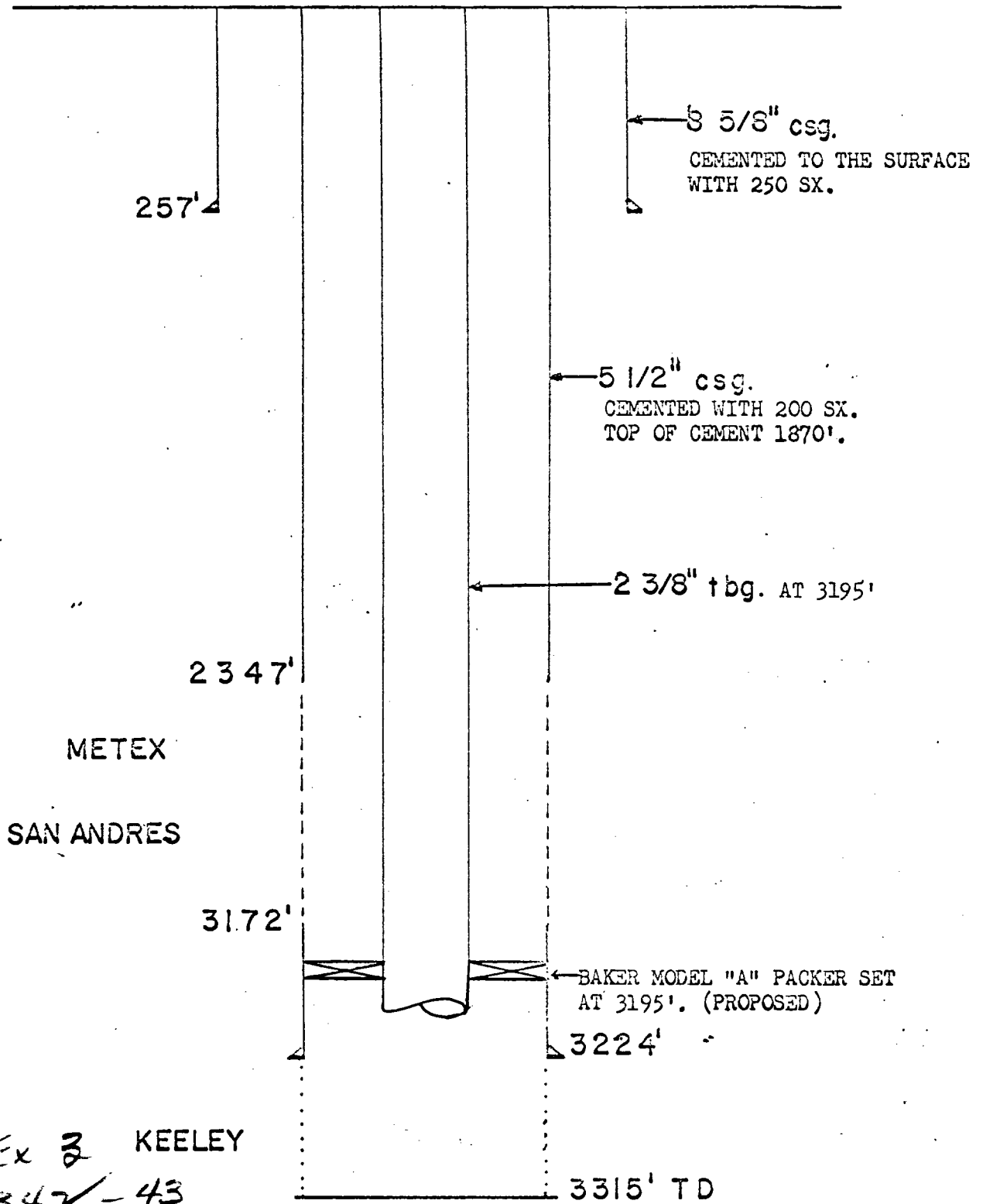
R. D. 3282'

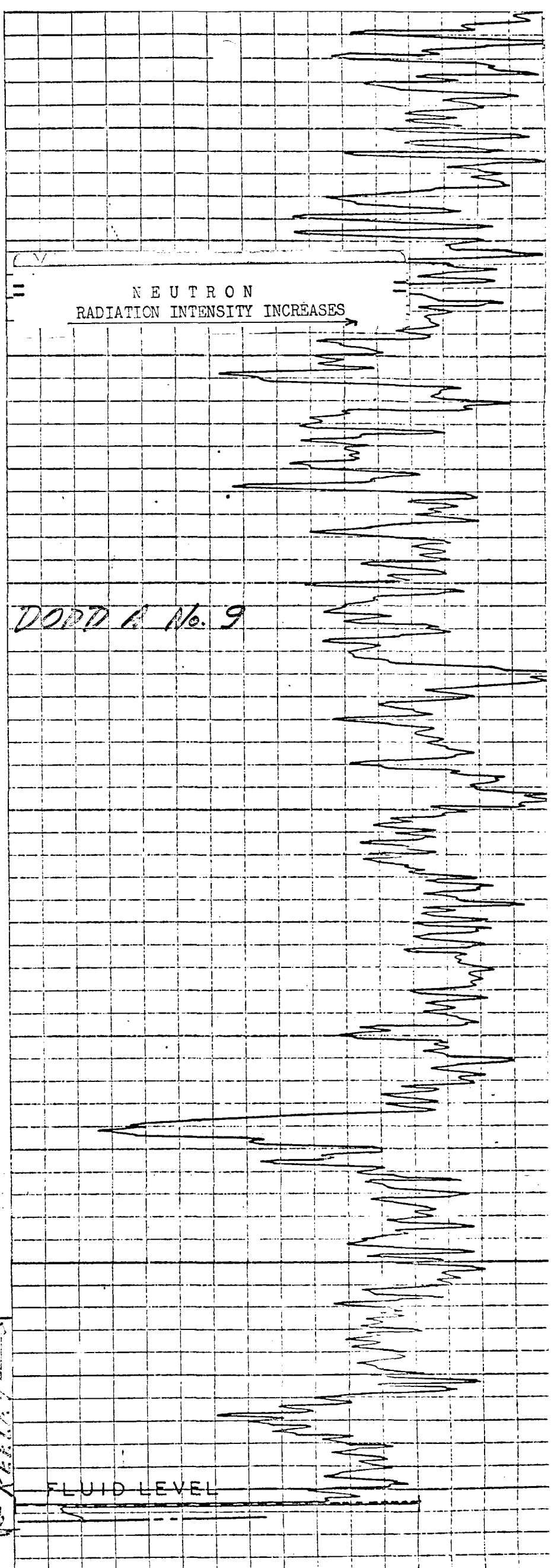
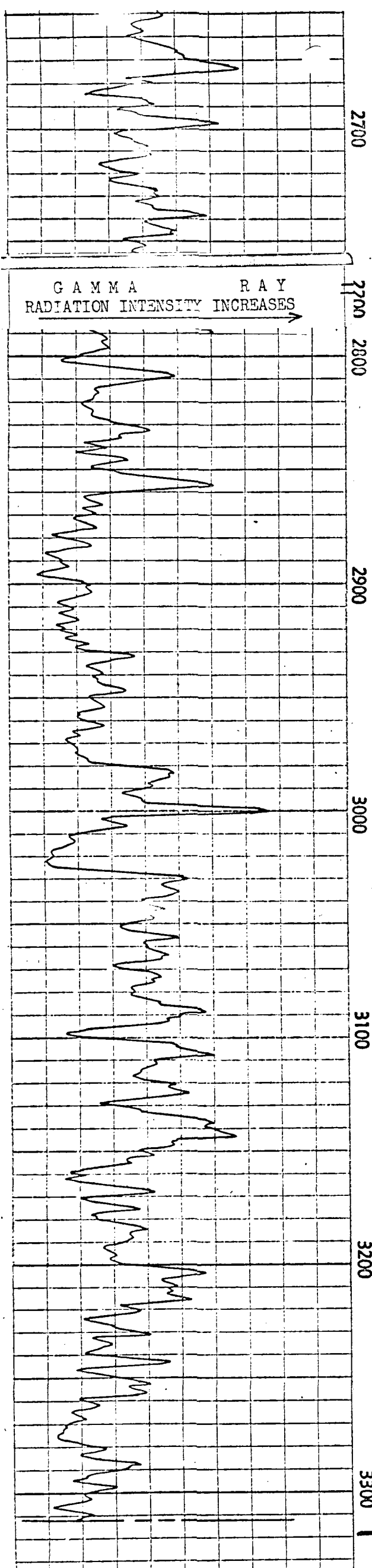
SUNRAY MID-CONTINENT OIL COMPANY

DODD "A" N°11

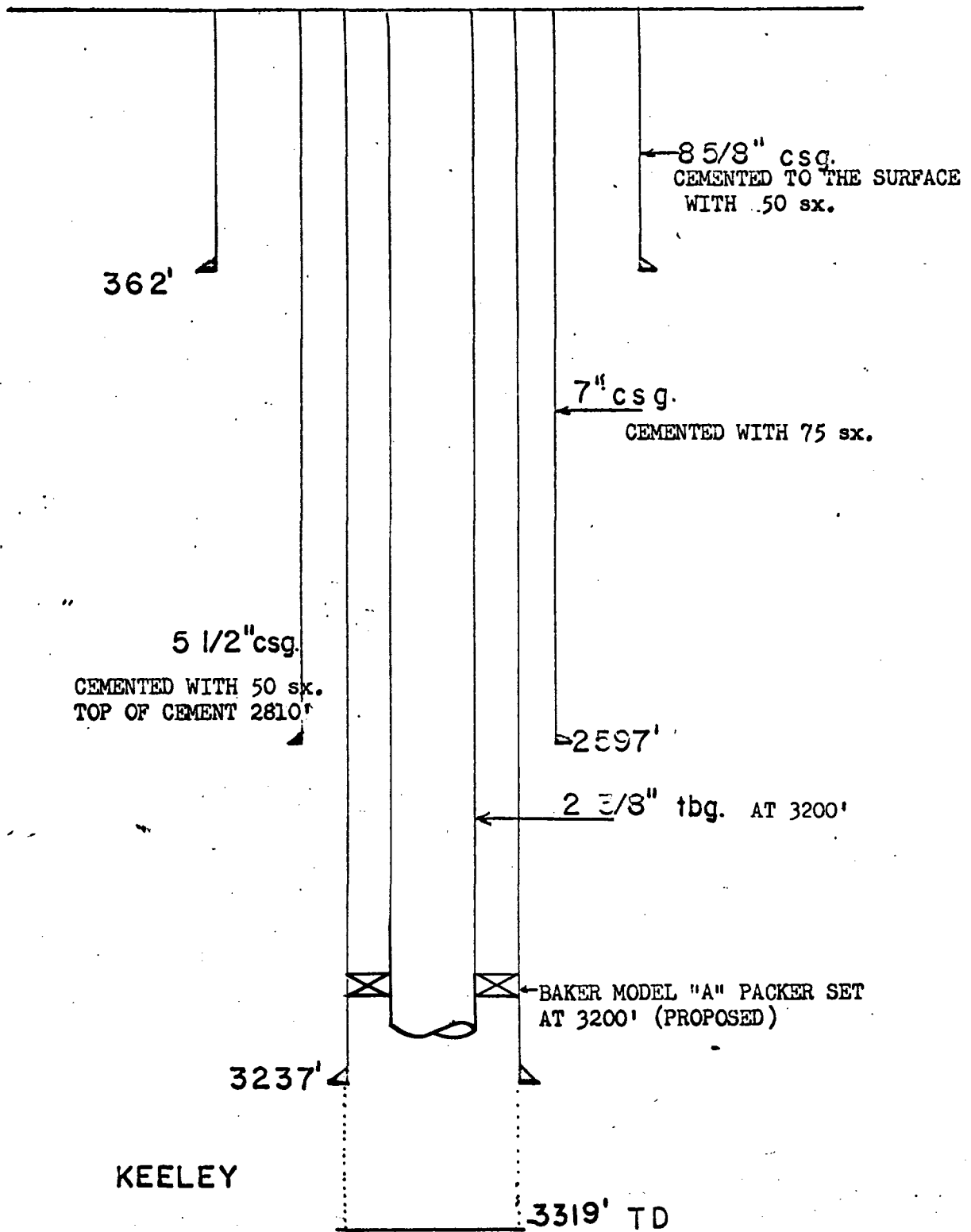
GRAYBURG JACKSON

D O D D A No. 9



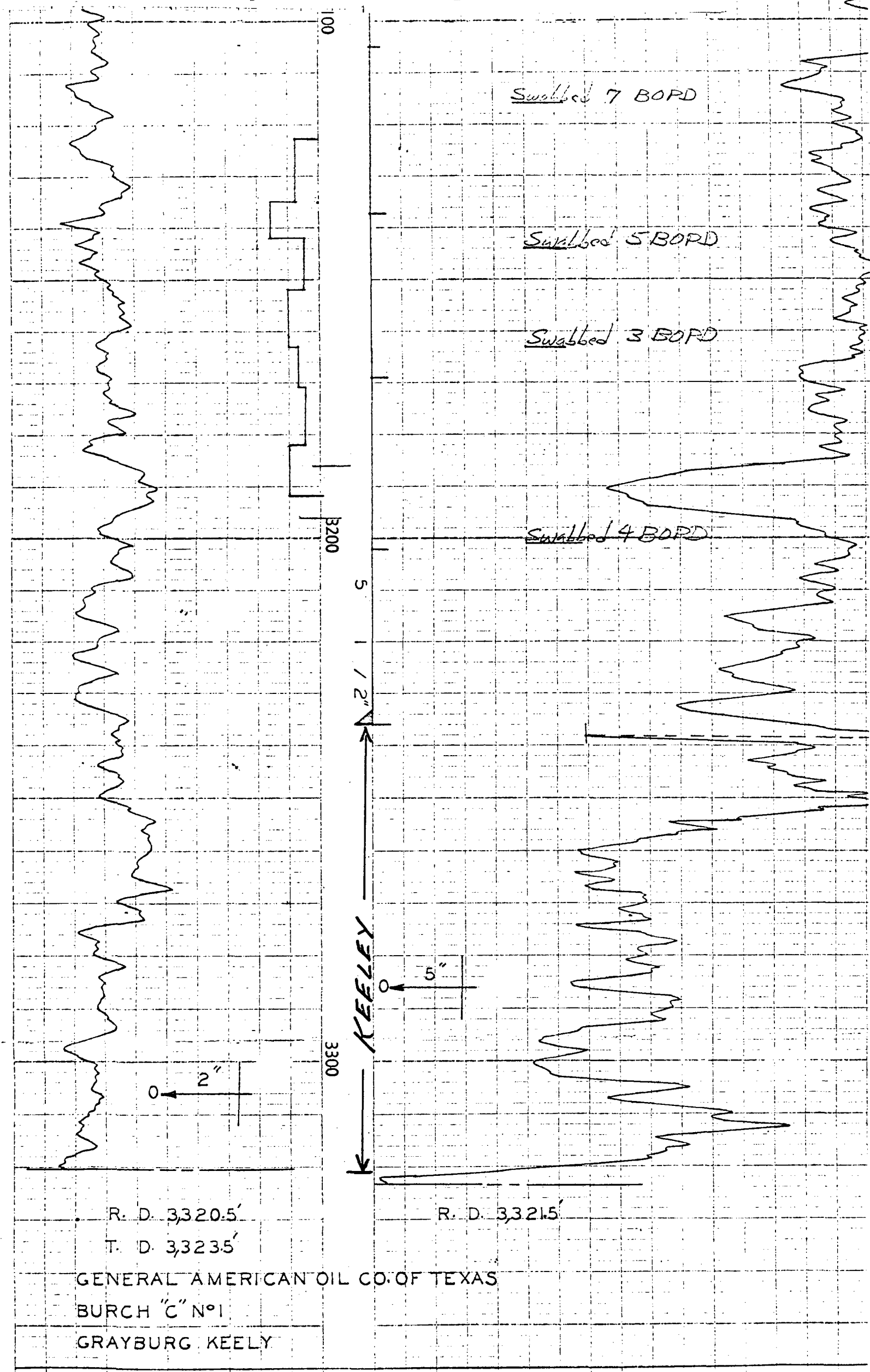


GENERAL AMERICAN  
BURCH "C" No. 1

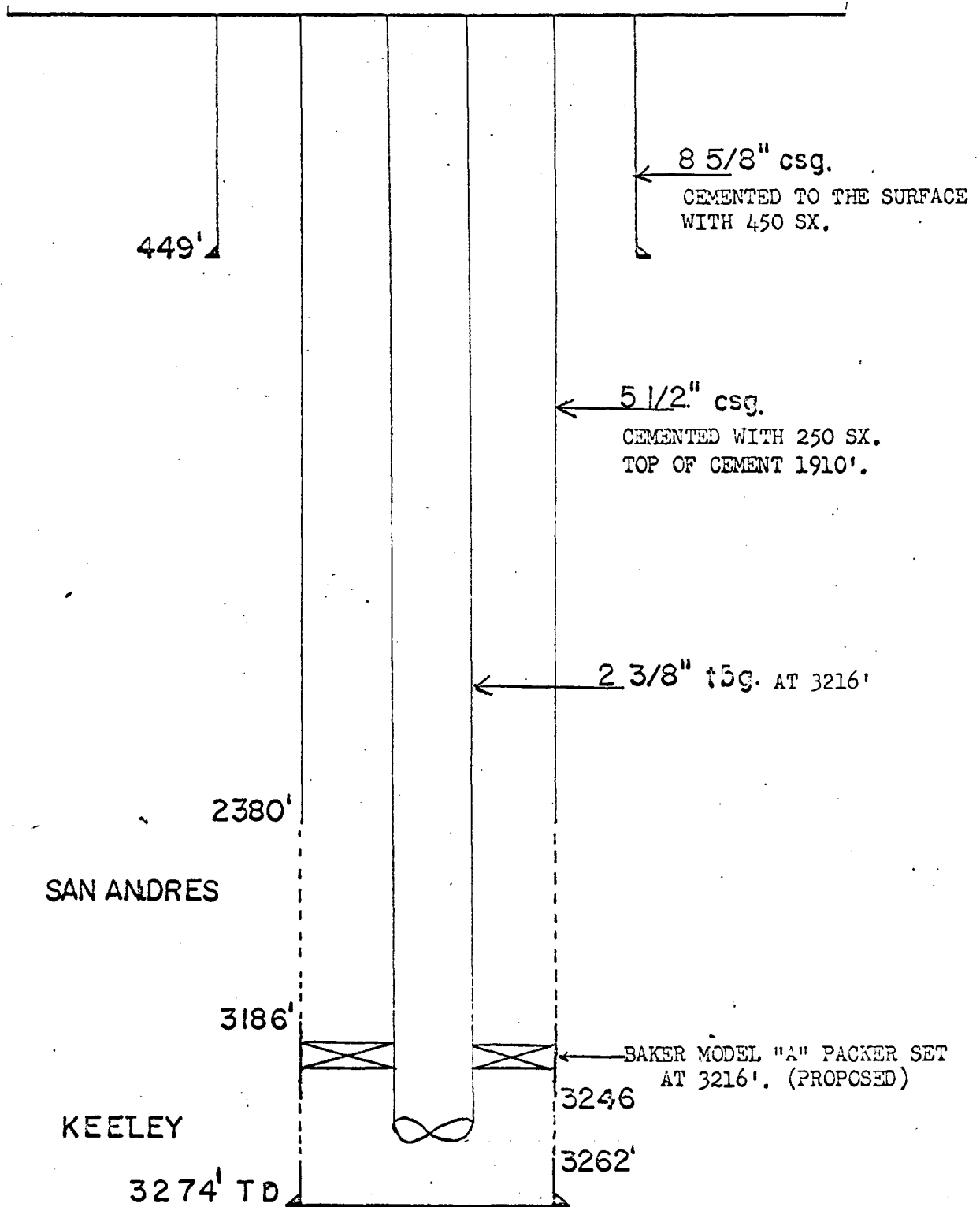


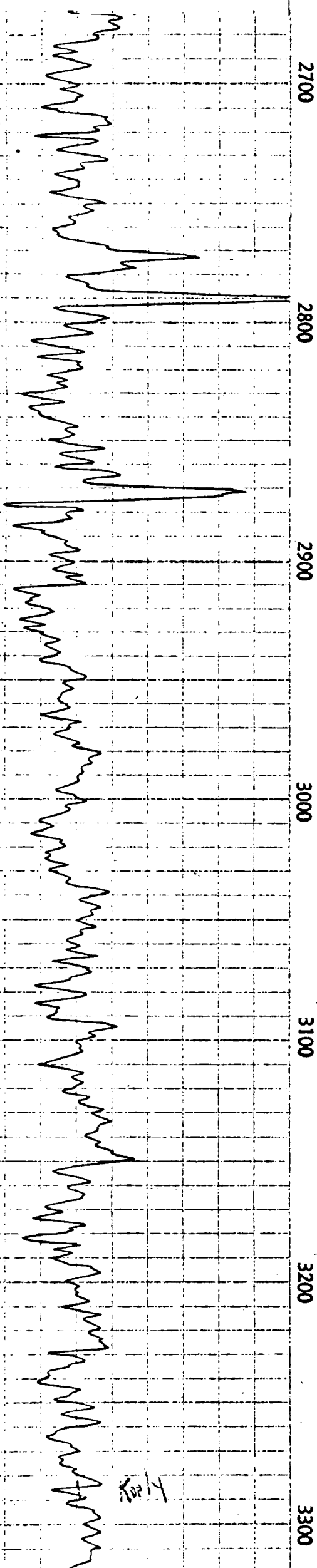
GAMMA RAY  
RADIATION INTENSITY INCREASES

NEUTRON  
RADIATION INTENSITY INCREASES

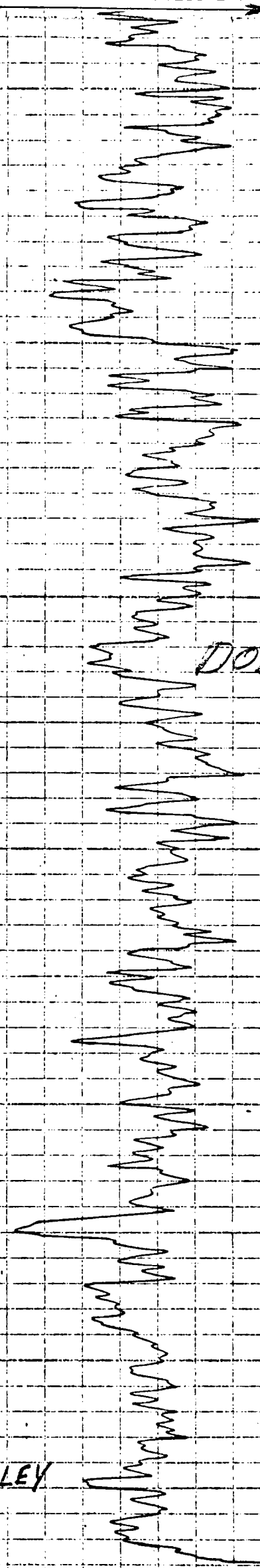


D O D D A No. 10





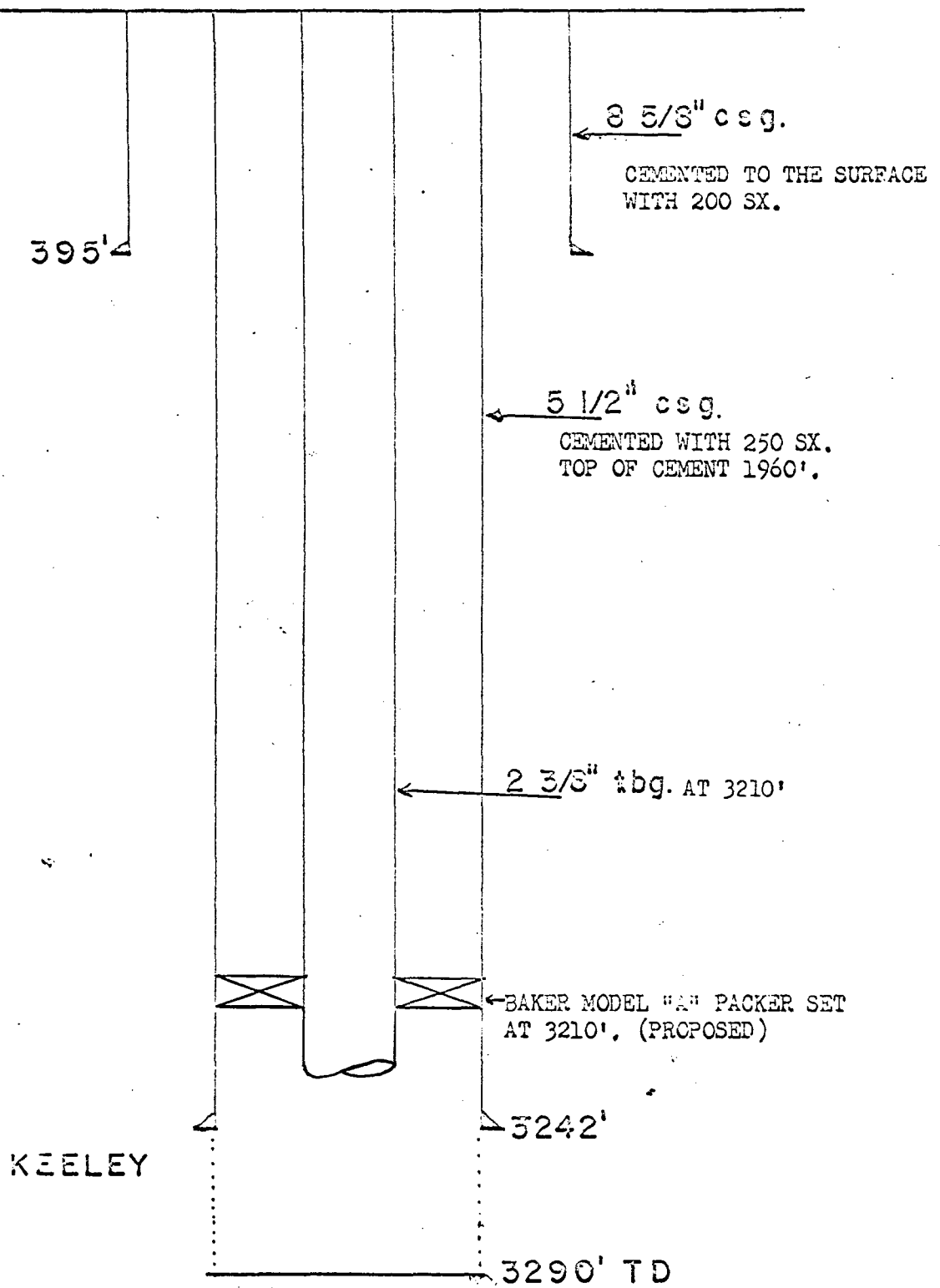
Top 4



DODD A No. 10

KEELEY

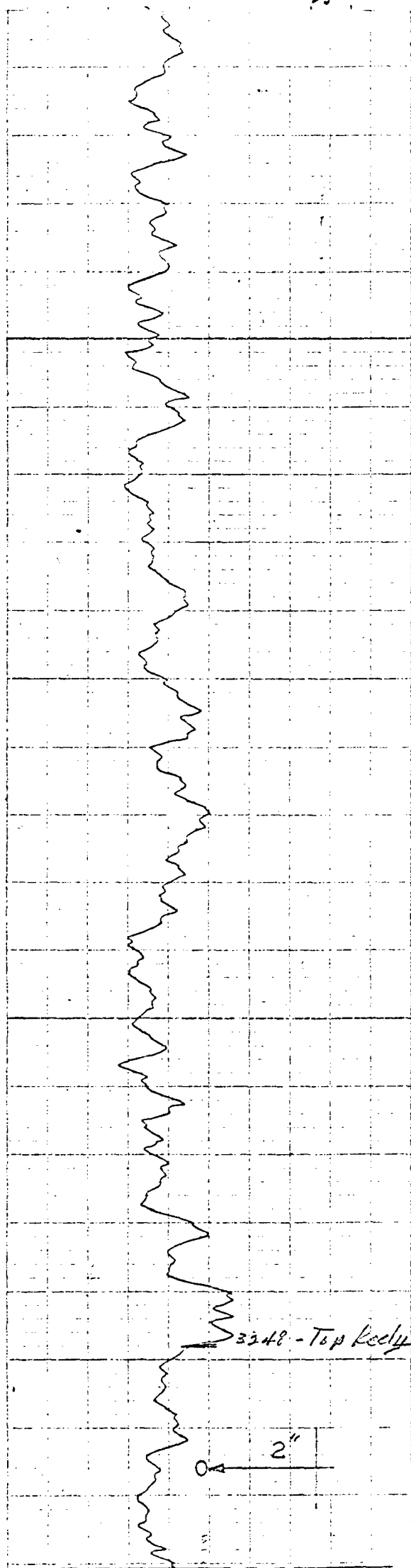
D O D D A No. 11





GAMMA RAY  
RADIATION INTENSITY INCREASES

NEUTRON  
DIATION INTENSITY INCREASES



3100

3200

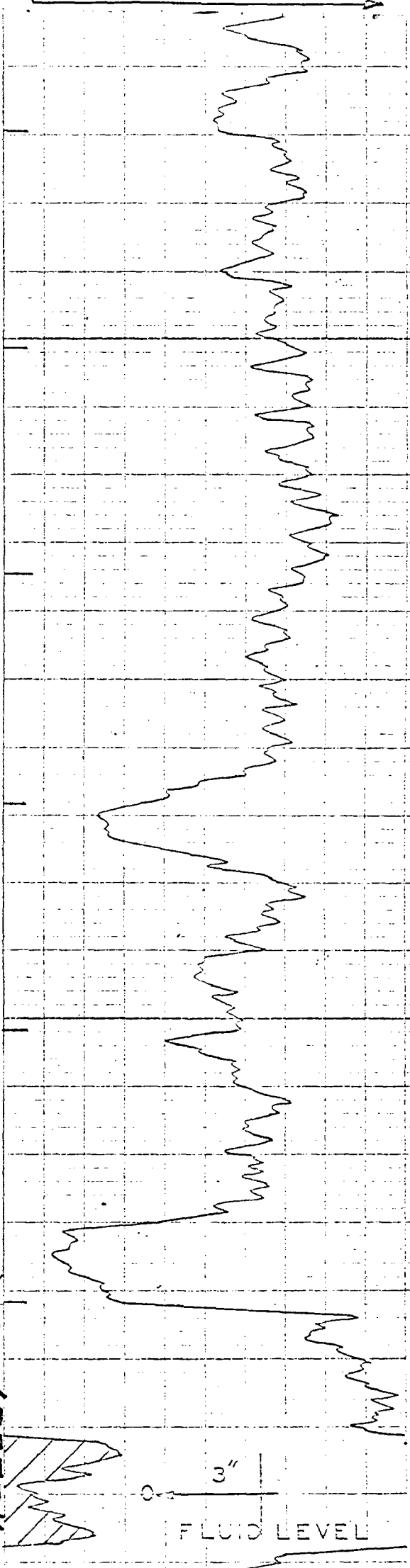
5

1

1/2"

KEY

3264  
3276



R. D. 3281'

T. D. 3284'

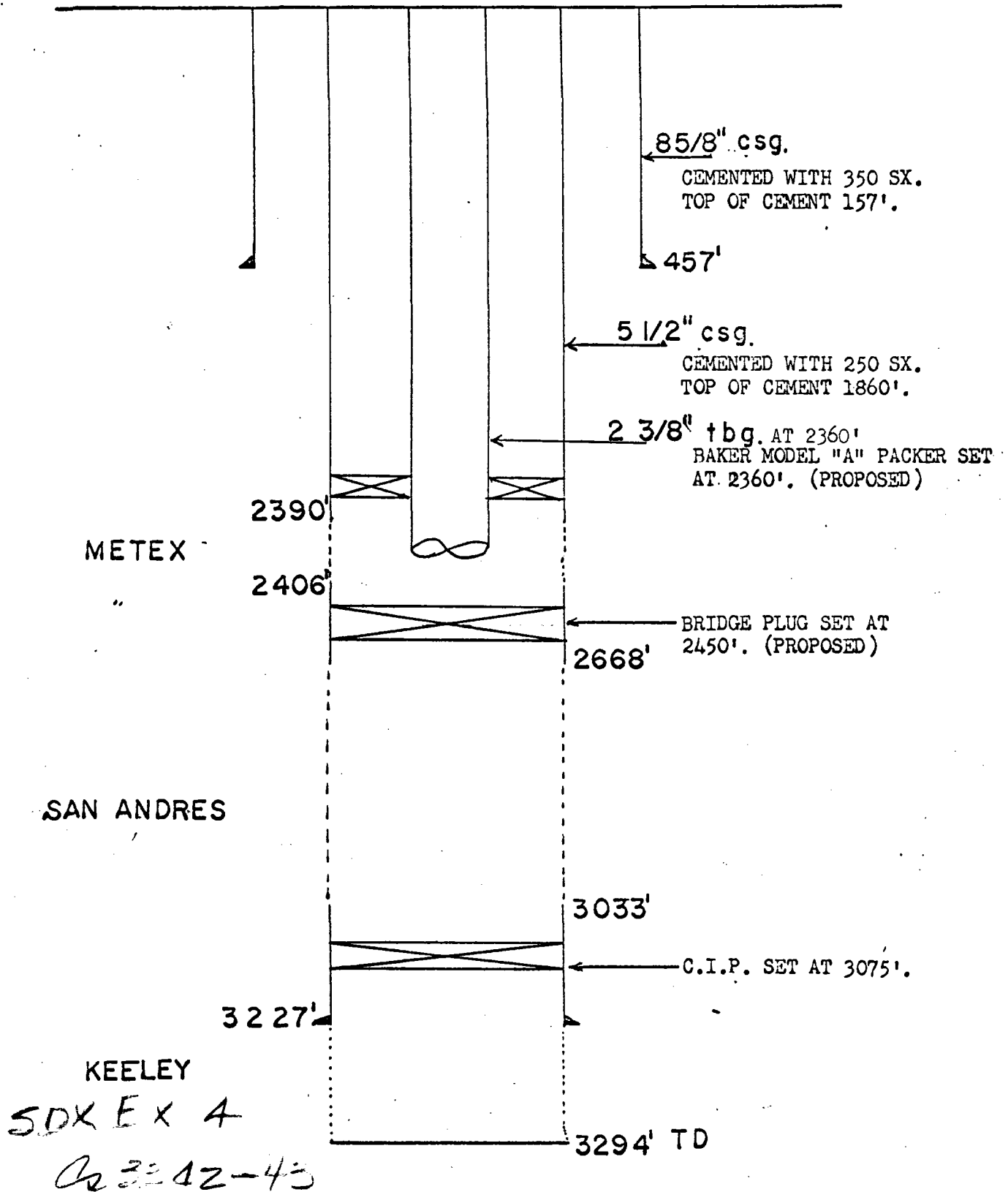
R. D. 3282'

SUNRAY MID CONTINENT OIL COMPANY

DODD "A" N°11

GRAYBURG JACKSON

DODD A No. 13.



DODD B No. 13

2350

GAMMA RAY  
RADIATION INTENSITY INCREASES

NEUTRON  
RADIATION INTENSITY INCREASES

2400  
2450  
2500

METEX

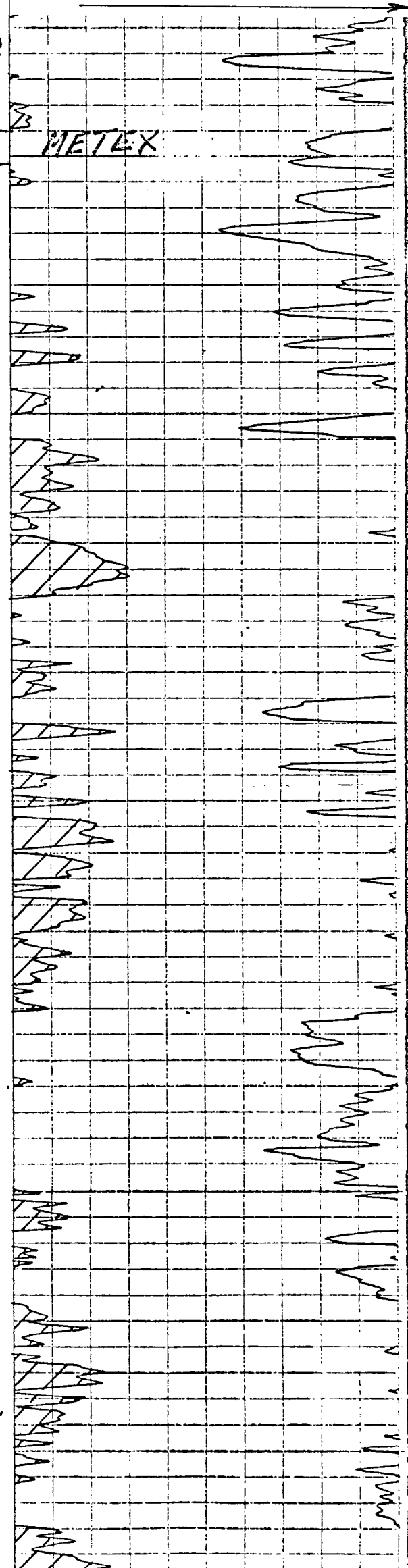
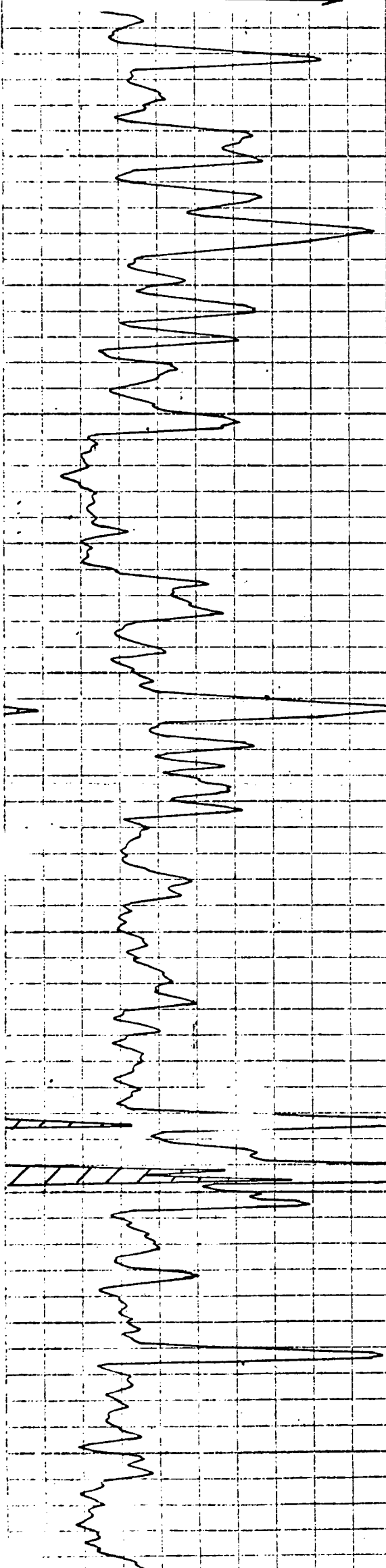
2500

2600

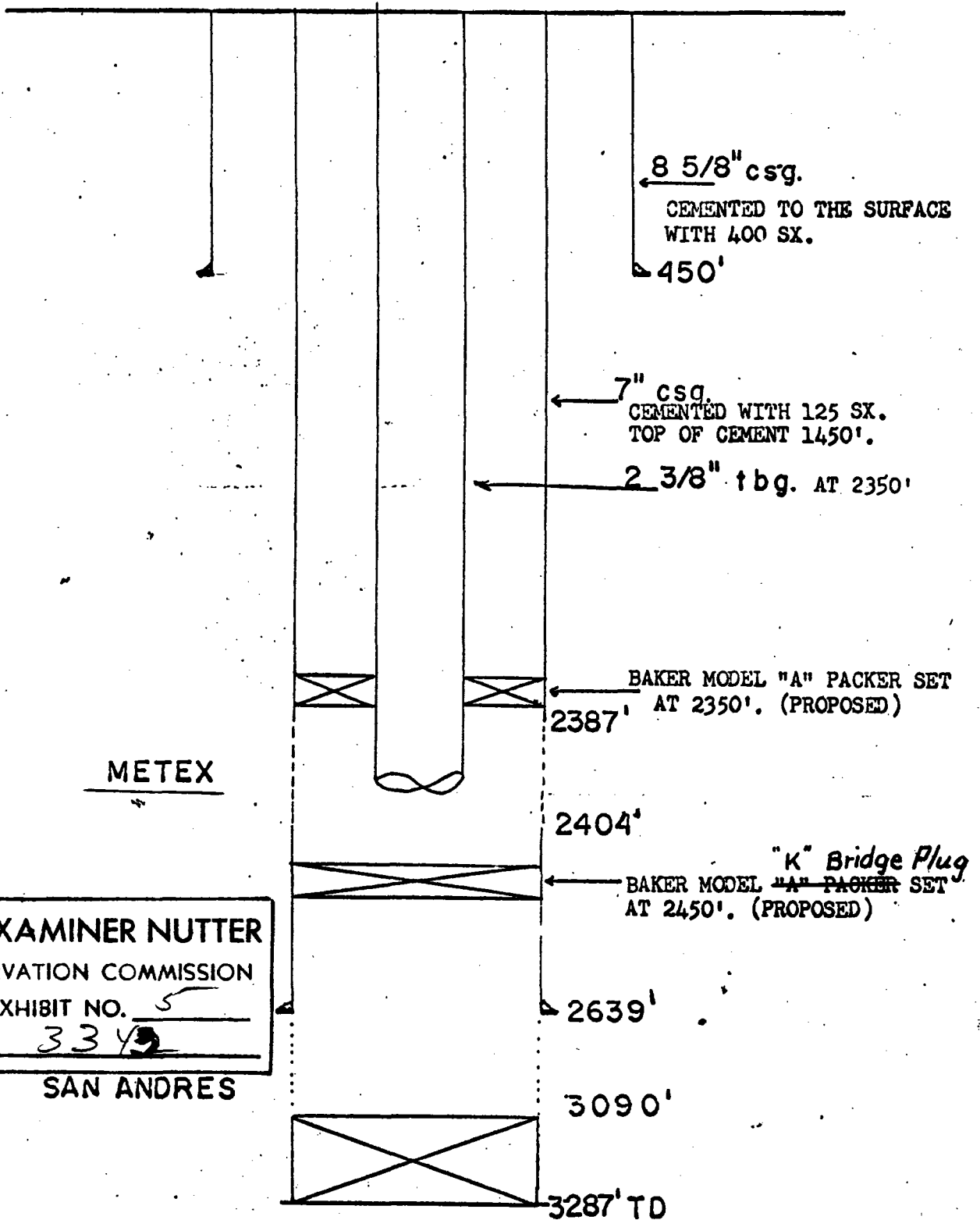
2700

2800

2900



DODD 'A' No. 19



NEUTRON - GAMMA  
COUNTS PER SECOND

NEUTRON - GAMMA  
COUNTS PER SECOND

2300

2400

2500

2600

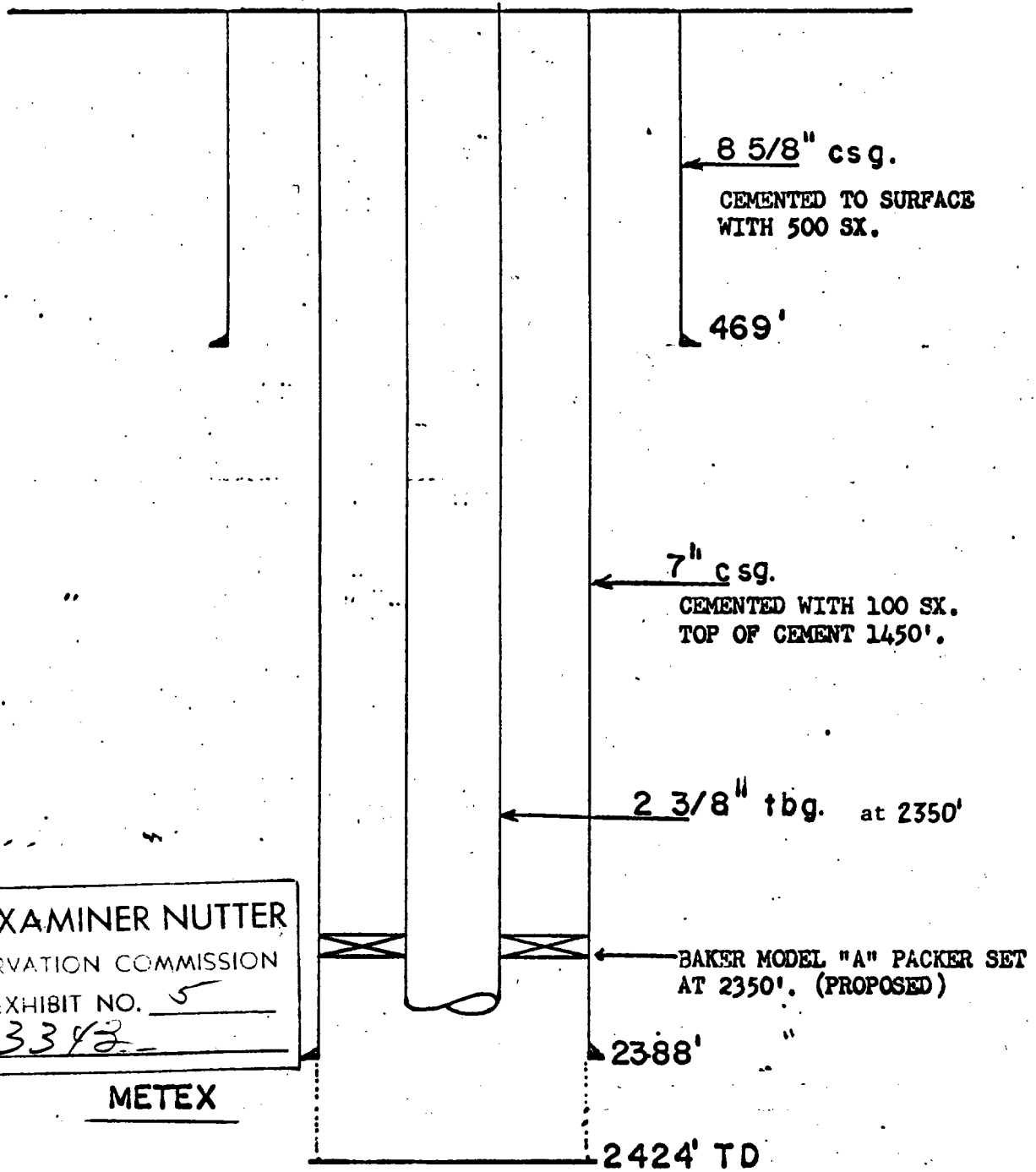
2700

2800

400 Base Change 250  
500 750

BEFORE EXAMINER NUTTER  
OIL CONSERVATION COMMISSION  
EXHIBIT NO. \_\_\_\_\_  
CASE NO. 3

D O D D A No. 20



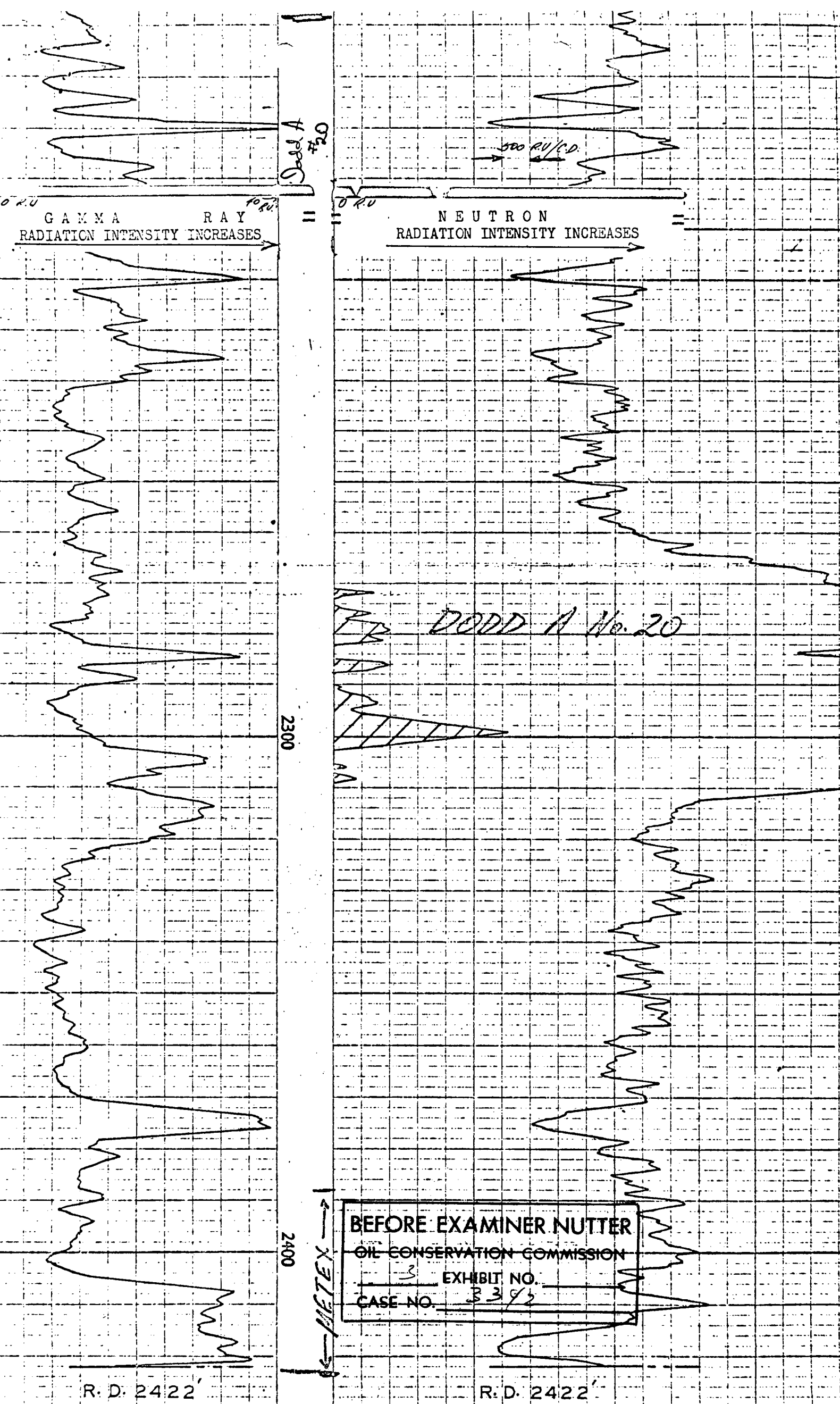
BEFORE EXAMINER NUTTER

OIL CONSERVATION COMMISSION

EXHIBIT NO. 5

CASE NO. 3342

METEX



XERO COPY XERO COPY XERO COPY XERO COPY

P. O. Box 1416  
Roswell, New Mexico  
November 3, 1965

Mr. Frank Irby  
State Engineer Office  
Capital Building  
Santa Fe, New Mexico

Re: Dodd Leases (PG-6)  
Grayburg-Jackson Pool  
Eddy County, New Mexico

Dear Mr. Irby:

The purpose of this transmittal is to confirm our telephone conversation of November 2, 1965, concerning the mechanics of waterflooding the subject leases.

The produced water from the Dodd "A" and Dodd "B" leases is currently disposed of into two earthen pits, one located on each of the leases. It is proposed to continue this disposition of produced water which currently amounts to about 30 bbls. per day on each lease until a sufficient amount is available to supply the required injection volume of one injection well or an estimated 100-200 BPD. This will mean each pit will take about 50-100 BPD until this condition is reached. Otherwise fresh water will be the sole injection source and purchased from Yucca Water Company of Lovington, New Mexico. At no time during the life of the project do we propose to co-mingle fresh and produced water.

In regards to cement lining or internal protection of injection tubing strings or systems, we propose to use unprotected pipe and tubing where fresh water is to be handled. When produced water injection begins, the systems handling this water and the tubing strings of the wells in which produced water is injected will be internally lined with cement.

BEFORE EXAMINER NUTTER

OIL CONSERVATION COMMISSION

SDX EXHIBIT NO. VII

CASE NO. 3342

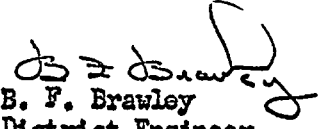


Mr. Frank Irby  
November 3, 1965  
Page 2

Please accept our apologies for previously supplying erroneous information regarding the above. If we can be of any further assistance in this matter, please advise. This waterflood will be handled by our Roswell Production District, P. O. Box 1416, Roswell, New Mexico.

Yours very truly,

SUNRAY OIL COMPANY

  
B. F. Brawley  
District Engineer

HFB:sk

cc: R. C. Spurlock

RECEIVED  
SUNRAY DX OIL CO.  
NOV - 8 1965  
W. W. NUTTER

November 5, 1965

Mr. A. L. Porter, Jr.  
Secretary-Director  
Oil Conservation Commission  
Santa Fe, New Mexico

Dear Mr. Porter:

Reference is made to the application of Sunray DX Oil Company which seeks authority to convert 8 wells in their Dodd "A" and "B" leases in the Grayburg-Jackson pool to injection for secondary recovery of oil. Four of the wells will inject into the Keeley zone and 4 into the Metex zone.

This office offers no objection to the granting of this application provided the injection wells will be constructed and equipped as shown on the diagrammatic sketches and modified by the letter of October 28, 1965 signed by W. A. Loar and by the letter dated November 3, 1965 signed by B. F. Brawley.

FEI/ma  
cc-Sunray DX Oil Co.  
F. H. Hennighausen

Yours truly,  
  
S. E. Reynolds  
State Engineer

By:  
Frank E. Irby  
Chief  
Water Rights Div.

**BEFORE EXAMINER NUTTER**  
OIL CONSERVATION COMMISSION  
SDX EXHIBIT NO. 7-A  
CASE NO. 3342-43

# GENERAL AMERICAN OIL COMPANY OF TEXAS

DISTRICT OFFICE  
BOX 413  
LOCO HILLS, NEW MEXICO  
November 17, 1965

New Mexico Oil Conservation Commission  
P. O. Box 2088  
Santa Fe, New Mexico

Gentlemen:

This letter is to advise that General American Oil Company of Texas is fully aware of Sunray's plans to flood the Keely zone in Section 22, Township 17 South, Range 29 East, Eddy County, New Mexico.

General American intends to cooperate along the line by the conversion of its Burch C No. 1 located 855 feet from West line and 2400' from North line of Section 23, Township 17 South, Range 29 East, Eddy County, New Mexico.

General American will convert its well to injection and furnish its own pressured water from a plant already located in the Northeast quarter of Section 26.

General American verifies the Flood Plan submitted as being correct in as far as it shows General American's Burch C No. 1 to be converted to water injection.

A lease line agreement between Sunray and General American is currently in the process of being executed.

General American's Burch C No. 1 has 5 1/2" 14# casing set at 3237'. Water injection will be down 2" EUE tubing with a tension packer set at approximately 3200'. The conversion of Burch C No. 1 to water injection will fit General American's ultimate flood plan for flooding its entire Keely section.

Very truly yours,

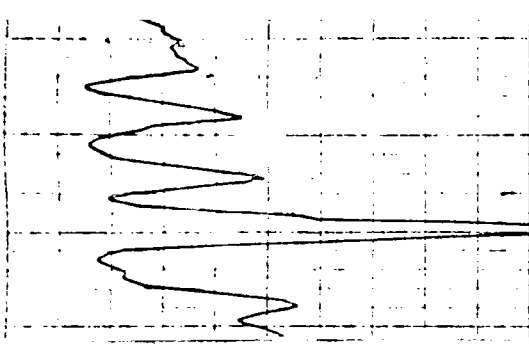
GENERAL AMERICAN OIL COMPANY OF TEXAS

*R. J. Heard*  
R. J. Heard

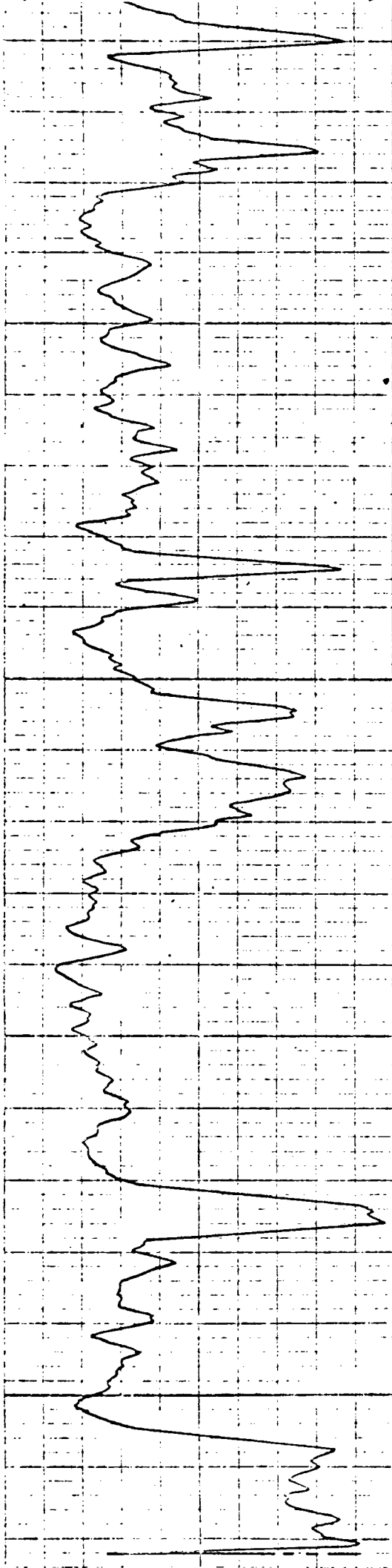
District Superintendent

RJH/rlc

BEFORE EXAMINER NUTTER	
OIL CONSERVATION COMMISSION	
SDK	EXHIBIT NO. 2
CASE NO. 334263343	



GAMMA RAY  
RADIATION INTENSITY INCREASES



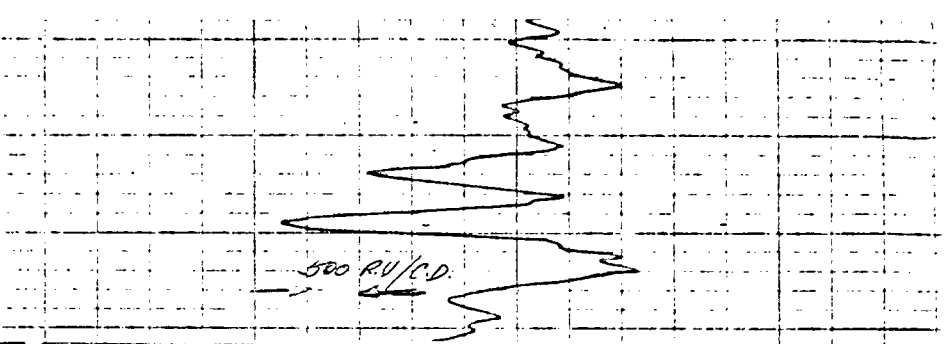
R. D. 2422'

DADD A No. 20

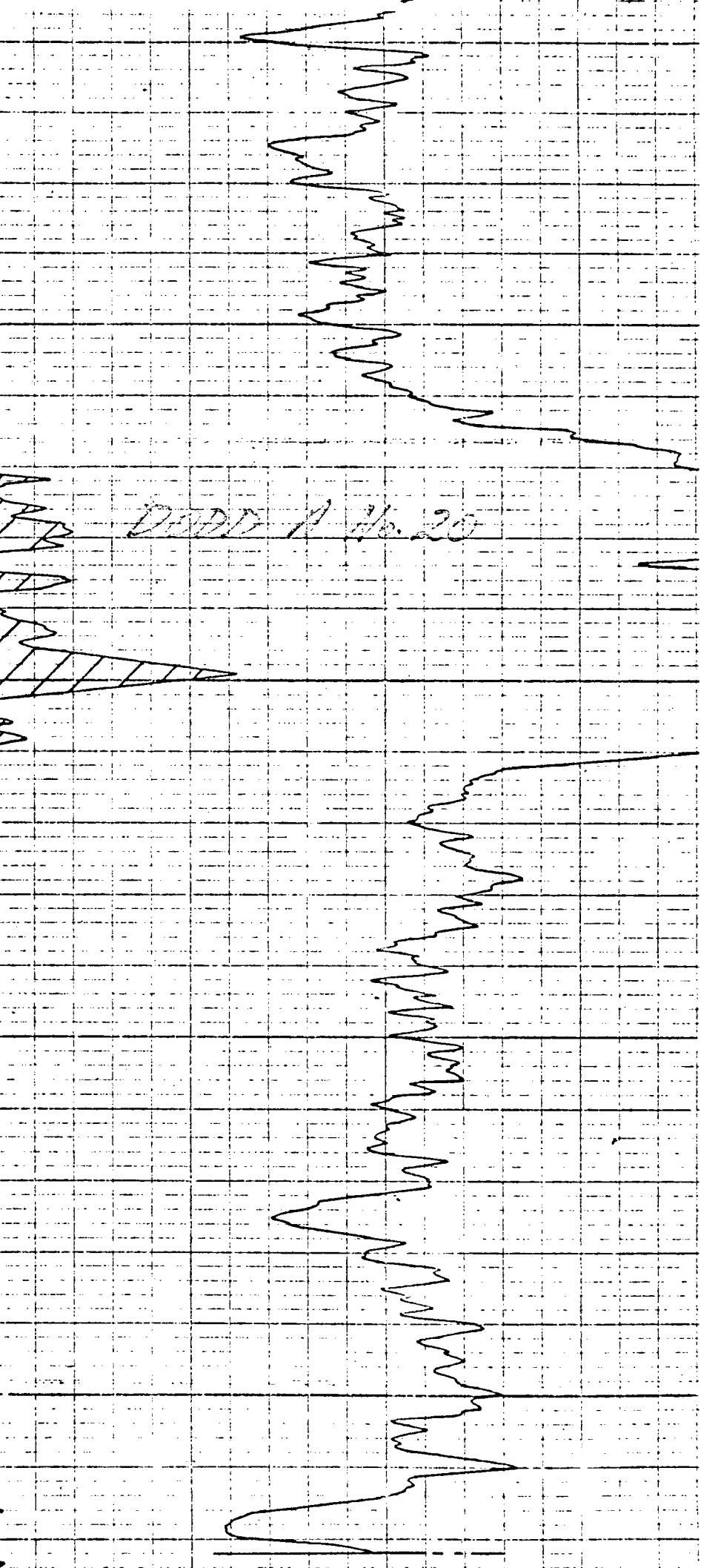
NEUTRON



R. D. 2422'



NEUTRON  
RADIATION INTENSITY INCREASES



R. D. 2422'

DDO B No. 13

2300

GAMMA RAY  
RADIATION INTENSITY INCREASES

2400

2500

2600

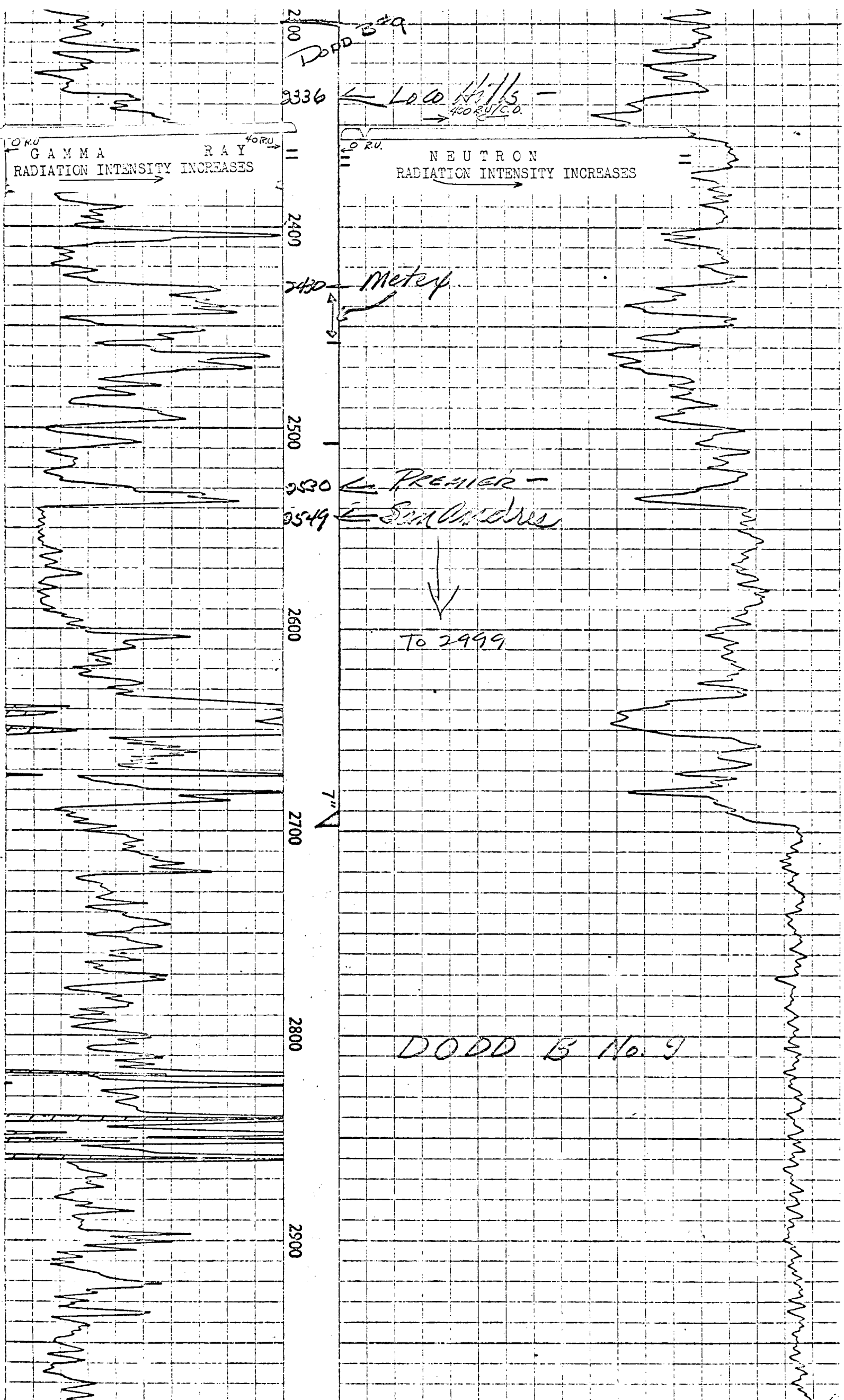
2700

2800

2900

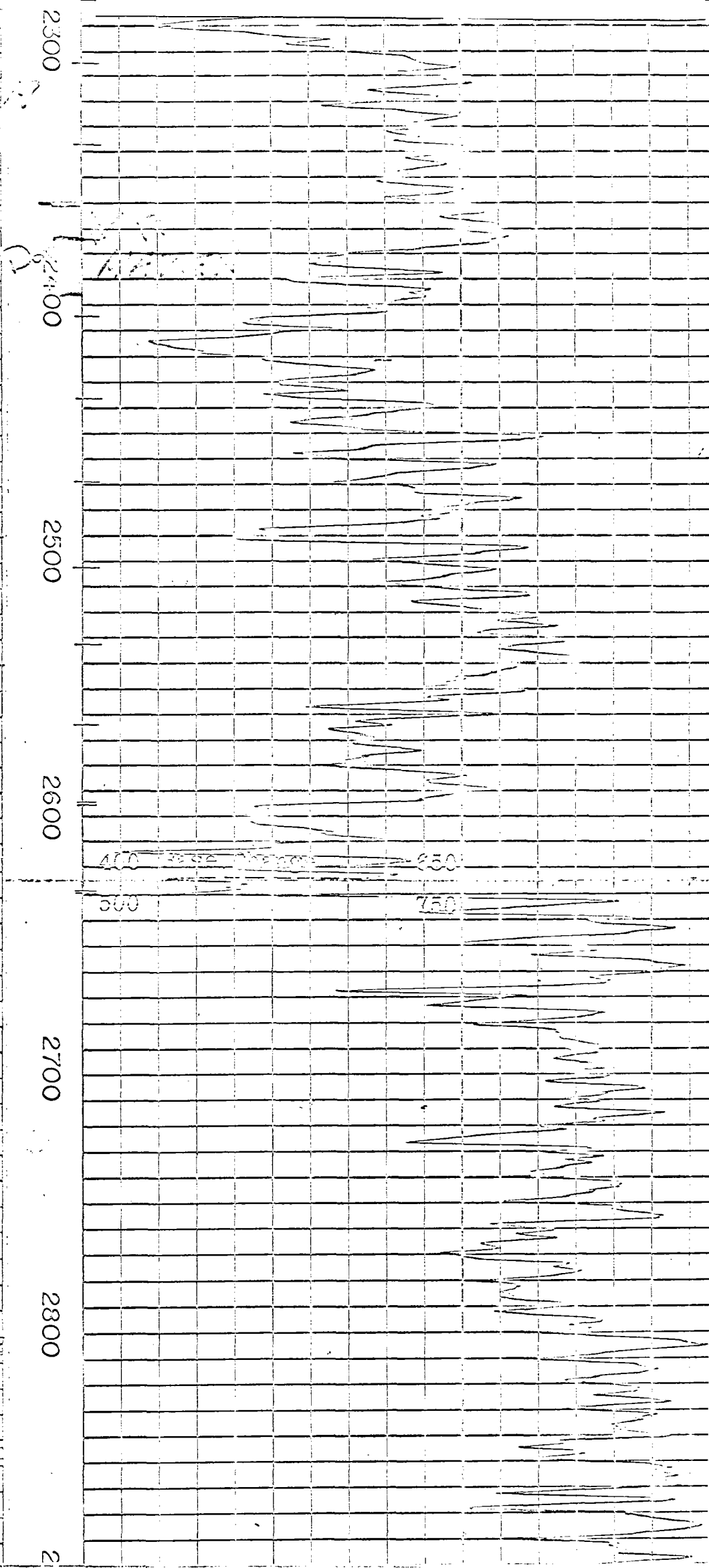
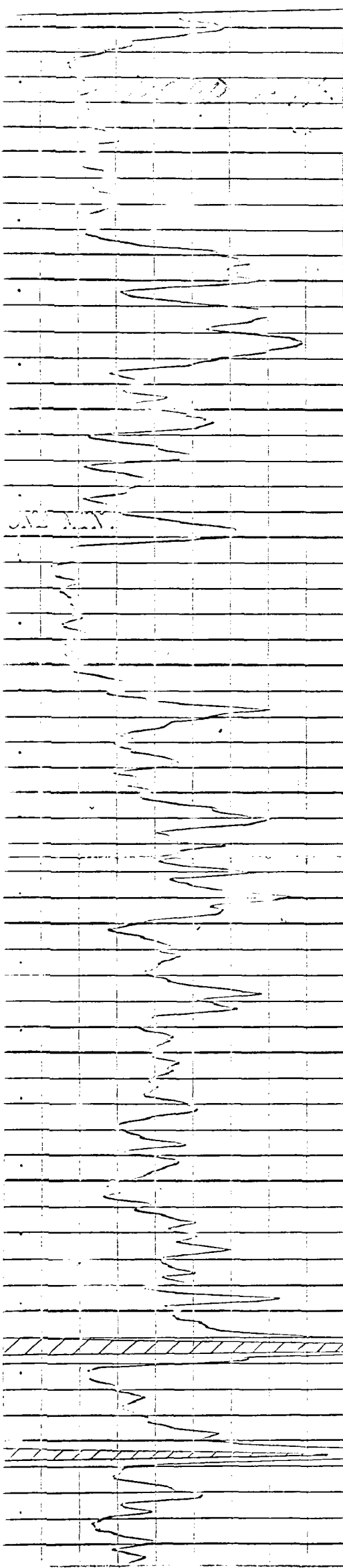
NEUTRON  
RADIATION INTENSITY INCREASES

METEX

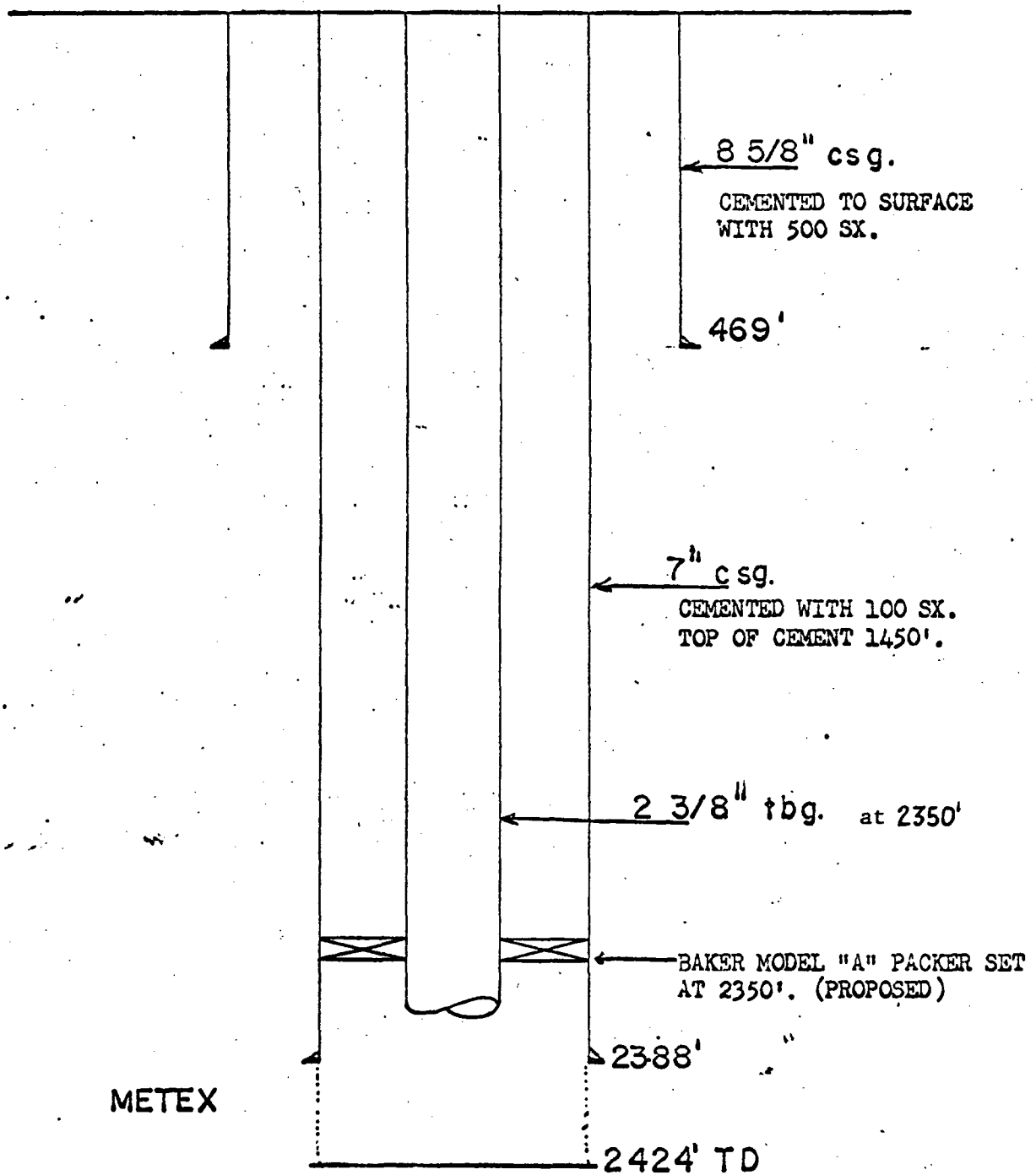


GAMMA  
COUNTS PER SECOND

NEUTRON - GAMMA  
COUNTS PER SECOND

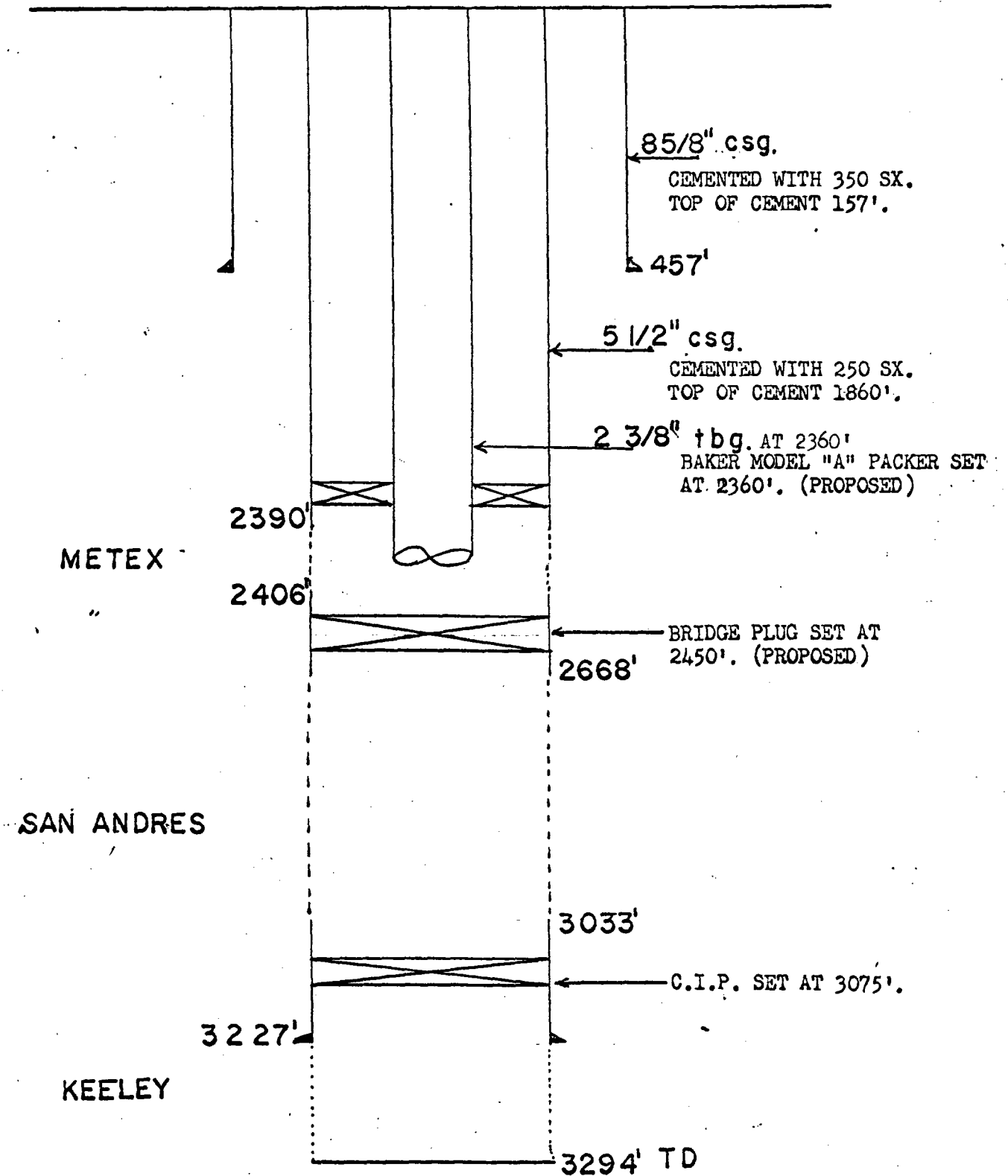


D O D D A No. 20

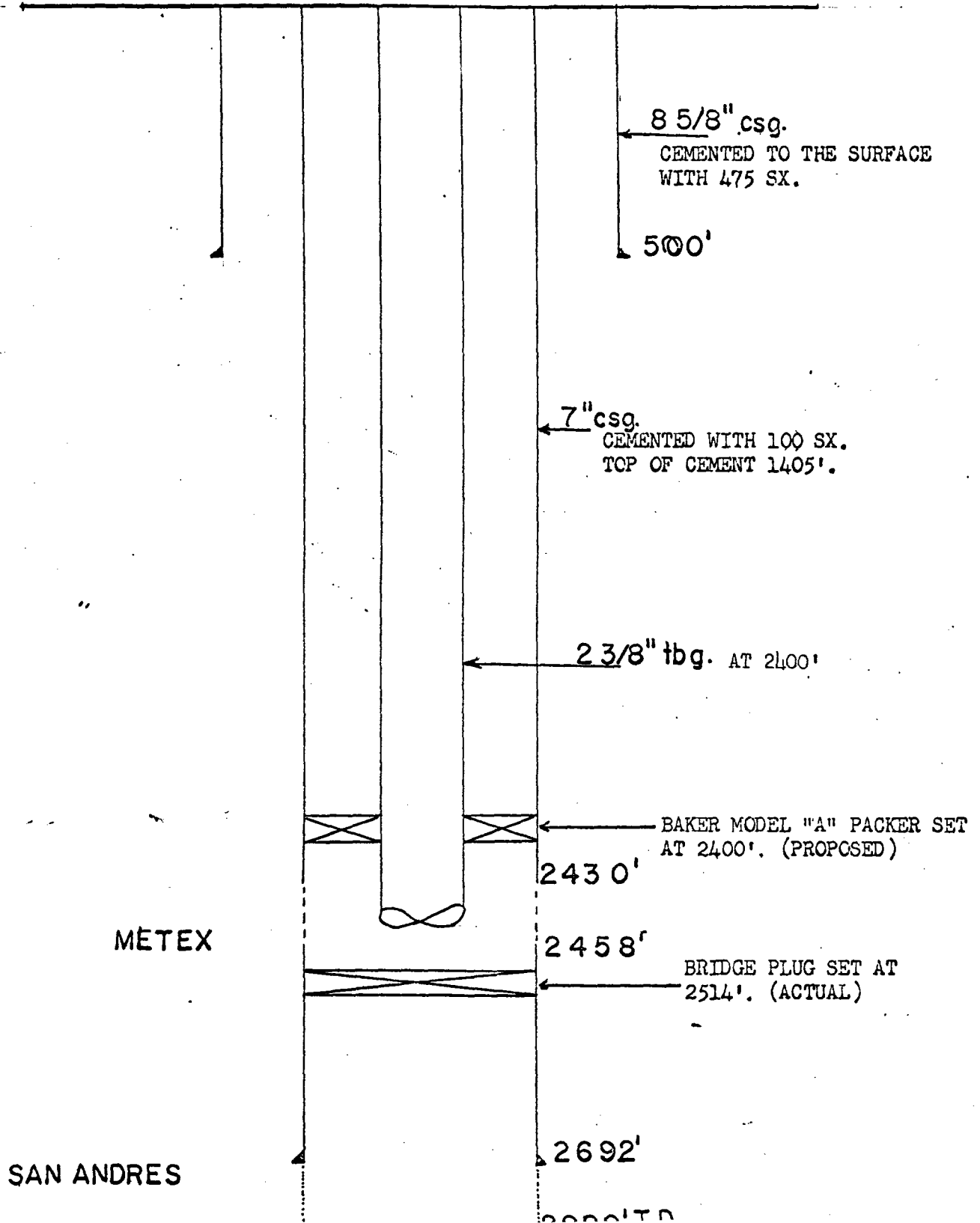




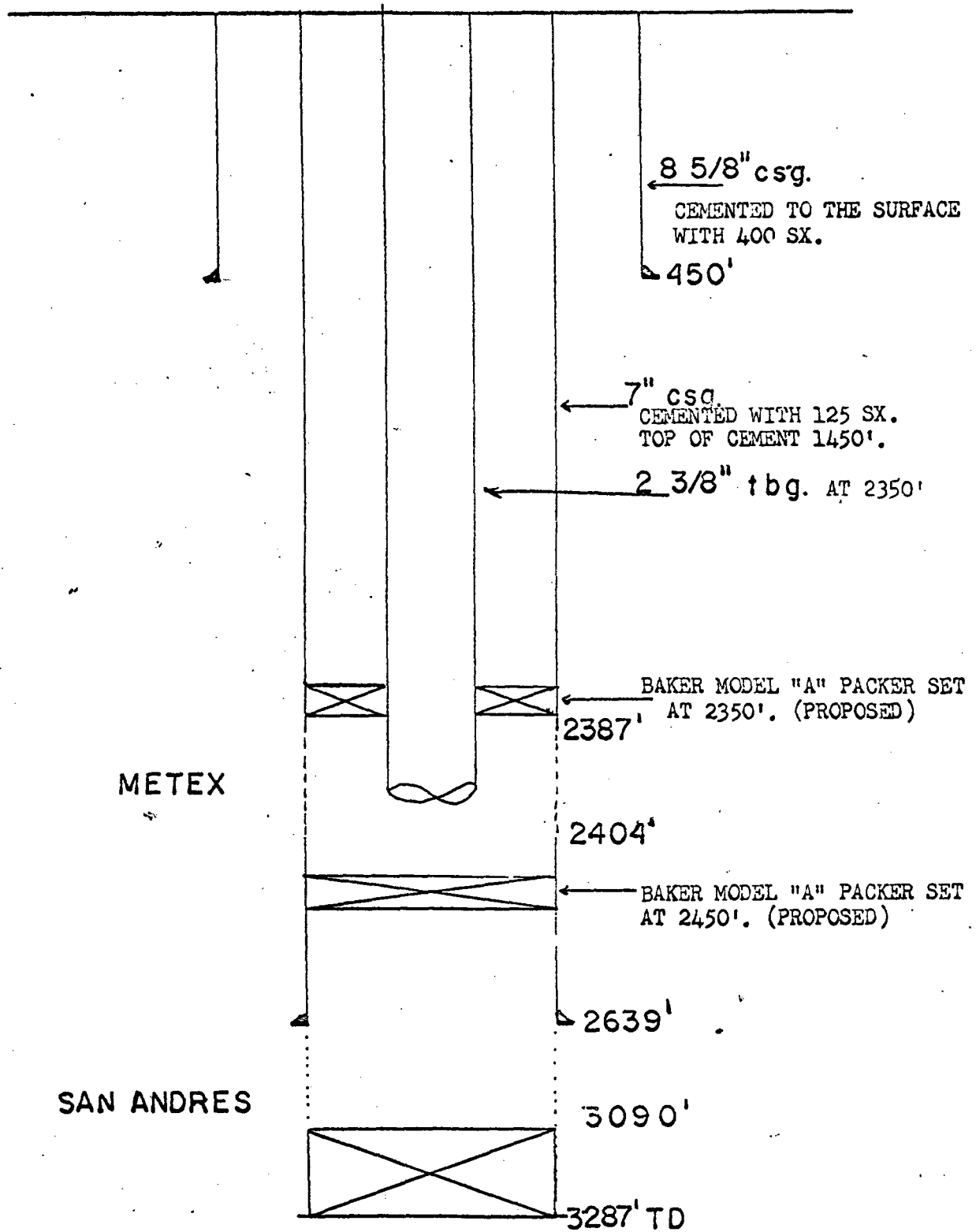
DODD A No. 13.



DODD B No. 9



DODD 'A No. 19

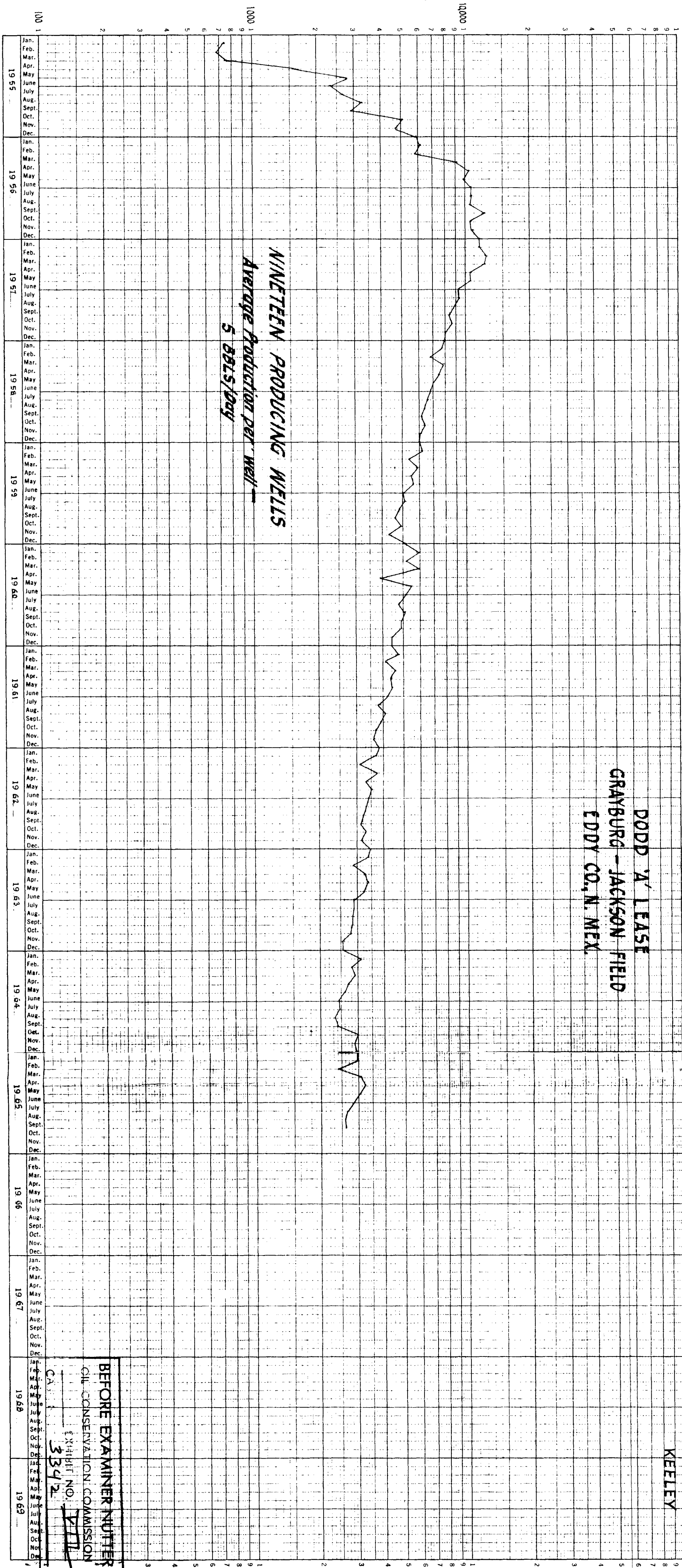


# ADDRESSEE LIST

## Dodd "A" & "B" Waterflood Project

<u>OPERATOR</u>	<u>ADDRESS</u>
Ambassador Oil Co.	200 Petr. Bldg., Abilene, Texas
Bassett and Birney	323 Carper Bldg., Artesia, N. M.
Collier Oils Inc.	P. O. Box 3988, Odessa, Texas
Continental Oil Co.	P. O. Box 460, Hobbs, N. M.
El Paso Nat. Gas Prod.	P. O. Box 3986, Odessa, Texas
Fair Oil Co.	P. O. Box 5445, Midland, Texas
O. F. Featherstone	236 Petr. Bldg., Roswell, N. M.
Gen. Amer. Oil Co.	P. O. Box 416, Loco Hills, N. M.
Gulf Oil Co.	P. O. Box 670, Hobbs, N. M.
International Oil & Gas	P. O. Box 427, Artesia, N. M.
Leonard Oil Co.	10th Fl., Sec. Ntl. Bnk. Bldg., Roswell, N. M.
E. J. McCurdy	1813 Clayton, Artesia, N. M.
Nearburg & Ingram	P. O. Box 1757, Roswell, N. M.
Newmont Oil Co.	Rowley Bldg., Artesia, N. M.
Sinclair Oil	P. O. Box 1920, Hobbs, N. M.
Skelly Oil Co.	P. O. Box 730, Hobbs, N. M.
Tenneco Oil Co.	18th Fl., Wilco Bldg., Midland, Texas
Texaco, Inc.	P. O. Box 728, Hobbs, N. M.
Yates Petr. Corp.	309 Carper Bldg., Artesia, N. M.

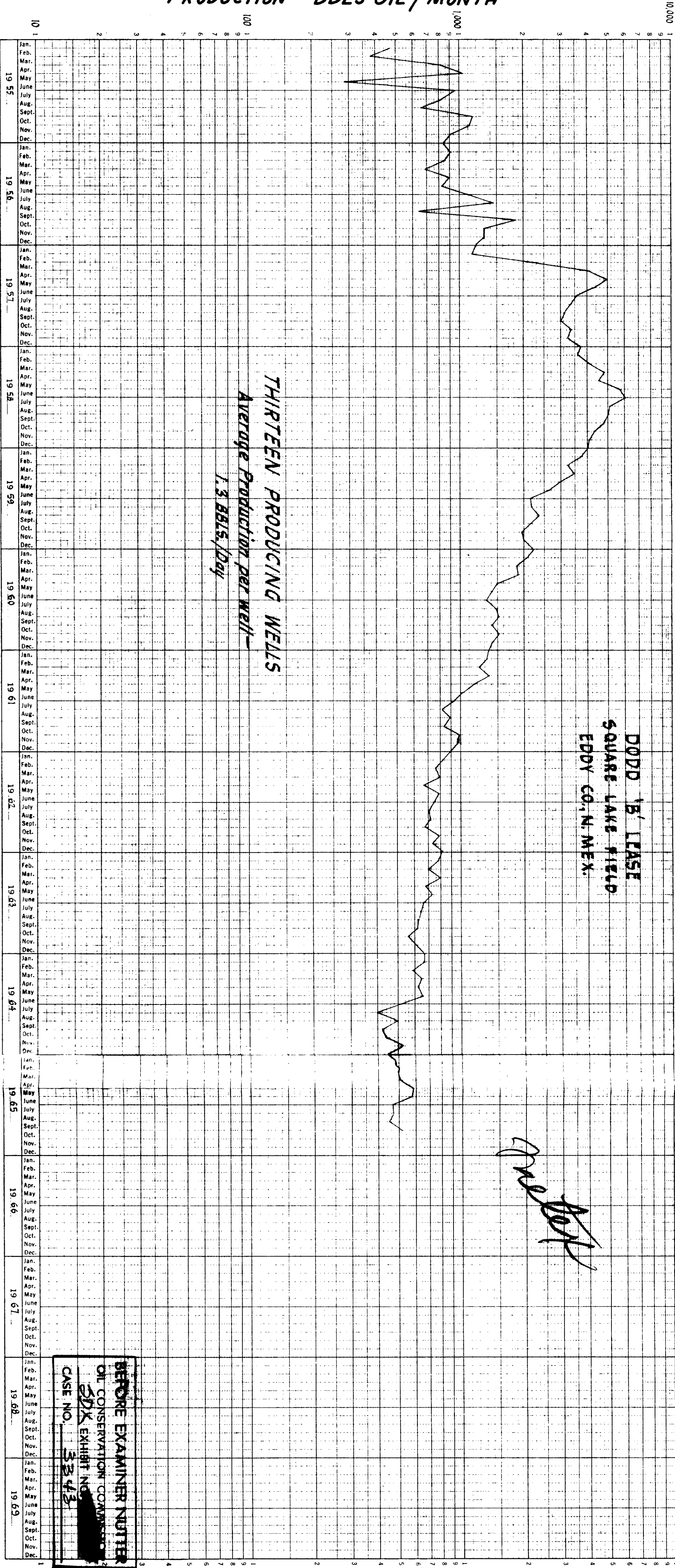
PRODUCTION - BBLs OIL / MONTH



BEFORE EXAMINER NOTED  
OIL CONSERVATION COMMISSION  
EXHIBIT NO. 3342

SEE III

PRODUCTION - BBLs OIL / MONTH



BEFORE EXAMINER NOTED  
OIL CONSERVATION COMMISSION  
EXHIBIT NO. 3343  
CASE NO. 3343