

N.

S.

TOM BOYD
Hinkle "B" No. 2
L-26-18-31
EL. 5648
TD. 5924

ATLANTIC
Hinkle "B" No. 3
P-27-18-31
EL. 3646
TD. 4012

ATLANTIC
Hinkle "A" No. 13
A-34-18-31
EL. 3643
TD. 4117

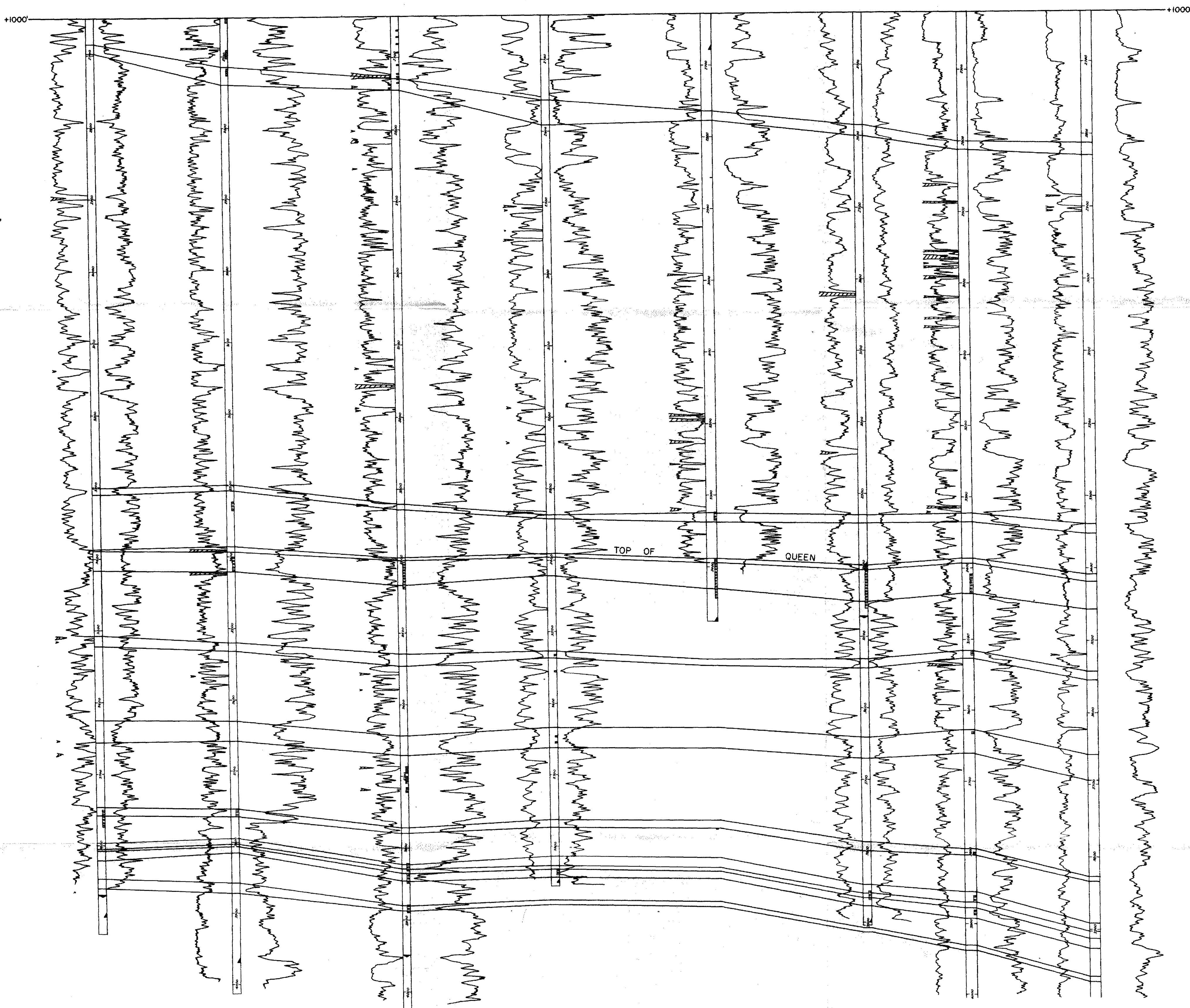
ATLANTIC
Hinkle "A" No. 6
H-34-18-31
EL. 3638
TD. 3855

ATLANTIC
Hinkle "A" No. 3
I-34-18-31
EL. 3627
TD. 3477

ATLANTIC
Hinkle "A" No. 4
M-35-18-31
EL. 3627
TD. 3905

KEOHANE & WESTALL
State No. 2
D-2-19-31
EL. 3618
TD. 4121

MASK, ET AL
State No. 3
F-2-19-31
EL. 3630
TD. 4500



NORTH-SOUTH CROSS-SECTION
PART OF SHUGART POOL
NO HORIZONTAL SCALE
EDDY COUNTY, NEW MEXICO
THE ATLANTIC REFINING COMPANY

BEFORE THE
OIL CONSERVATION COMMISSION
Santa Fe, New Mexico
Exhibit No. 10
Case No. 3391

EXHIBIT No. 10