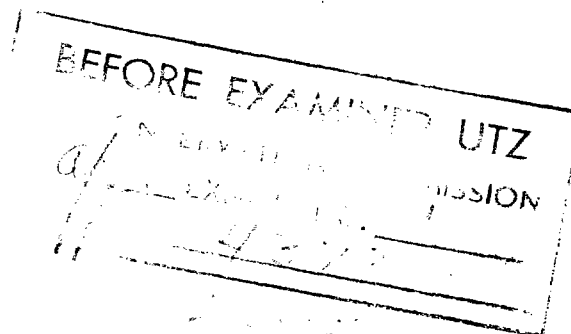


BENSON-MONTIN-GREER DRILLING CORP.
EXHIBITS IN CASES 4373 AND 4374
BEFORE THE
NEW MEXICO OIL CONSERVATION
COMMISSION

July 1, 1970



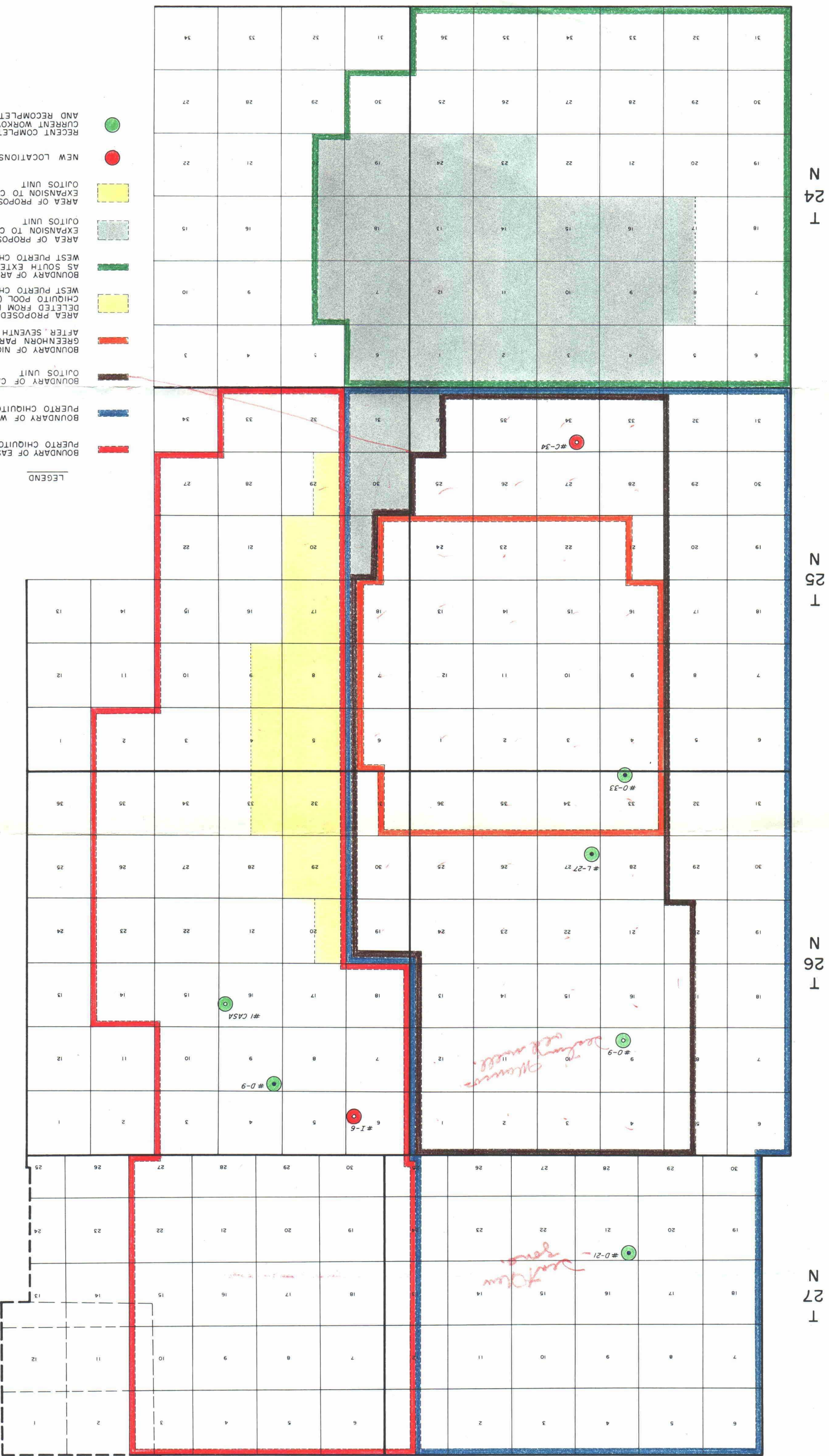
I N D E X

- A. PLAT SHOWING BOUNDARIES OF EAST PUERTO CHIQUITO POOL AND WEST PUERTO CHIQUITO POOL, ALONG WITH PROPOSED CHANGES IN POOL BOUNDARIES AND SHOWING CANADA OJITOS UNIT AREA AND ITS PROPOSED CHANGES IN BOUNDARY.
- B.
 - 1. PLAT OF PART OF CANADA OJITOS UNIT SHOWING ESTIMATED RANGES OF TRANSMISSIBILITY BY AREAS OF TESTS.
 - 2. PLAT OF SEVENTH EXPANDED PARTICIPATING AREA, CANADA OJITOS UNIT, SHOWING ESTIMATED PER ACRE OIL-IN-PLACE VALUES.
 - 3. GRAPH SHOWING RELATION OF OIL RECOVERY TO RESERVOIR PRESSURE.
- C. PLAT OF SEVENTH EXPANDED PARTICIPATING AREA, CANADA OJITOS UNIT, SHOWING STATUS OF DEPLETION WITHIN AREAS BOUNDED BY CONTOUR INTERVALS.
- D.
 - 1. TYPE LOG SHOWING PRODUCING INTERVALS AND CONTOUR POINT.
 - 2. THREE-WELL SOUTH-NORTH CROSS-SECTION, CANADA OJITOS UNIT TO AREA SOUTH.
 - 3. FIVE-WELL NORTH-SOUTH CROSS-SECTION, CANADA OJITOS UNIT TO AREA SOUTHEAST.
- E. STRUCTURAL CONTOUR MAP SHOWING AREAS INTERPRETED TO BE PRODUCTIVE.
- F. LEASE OWNERSHIP PLAT.

IN POCKET

SKETCH OF TWO CROSS-SECTIONS COMPARING FLEX OF FORMATIONS IN TOWNSHIP 25 NORTH, RANGE 1 WEST, WITH SECTION THROUGH TOWNSHIP 24 NORTH, RANGE 1 WEST.

SHOWING LOCATION OF NIOBRARA-GREENHORN PARTICIPATING AREA IN CANADA OJITOS UNIT



RECENT COMPLETIONS,
CURRENT WORKOVERS,
AND RECOMPLETIONS

NEW LOCATIONS

AREA OF PROPOSED SECOND
OJITOS UNIT

AREA OF PROPOSED FIRST
OJITOS UNIT

BOUNDARY OF AREA PROPOSED
AS SOUTH EXTENSION OF
WEST PUERTO CHIQUITO POOL

DELETED FROM EAST PUERTO
CHIQUITO POOL (AND ADDED TO
AREA PROPOSED TO BE
AFTER SEVENTH EXPANSION
GREENHORN PARTICIPATING AREA)

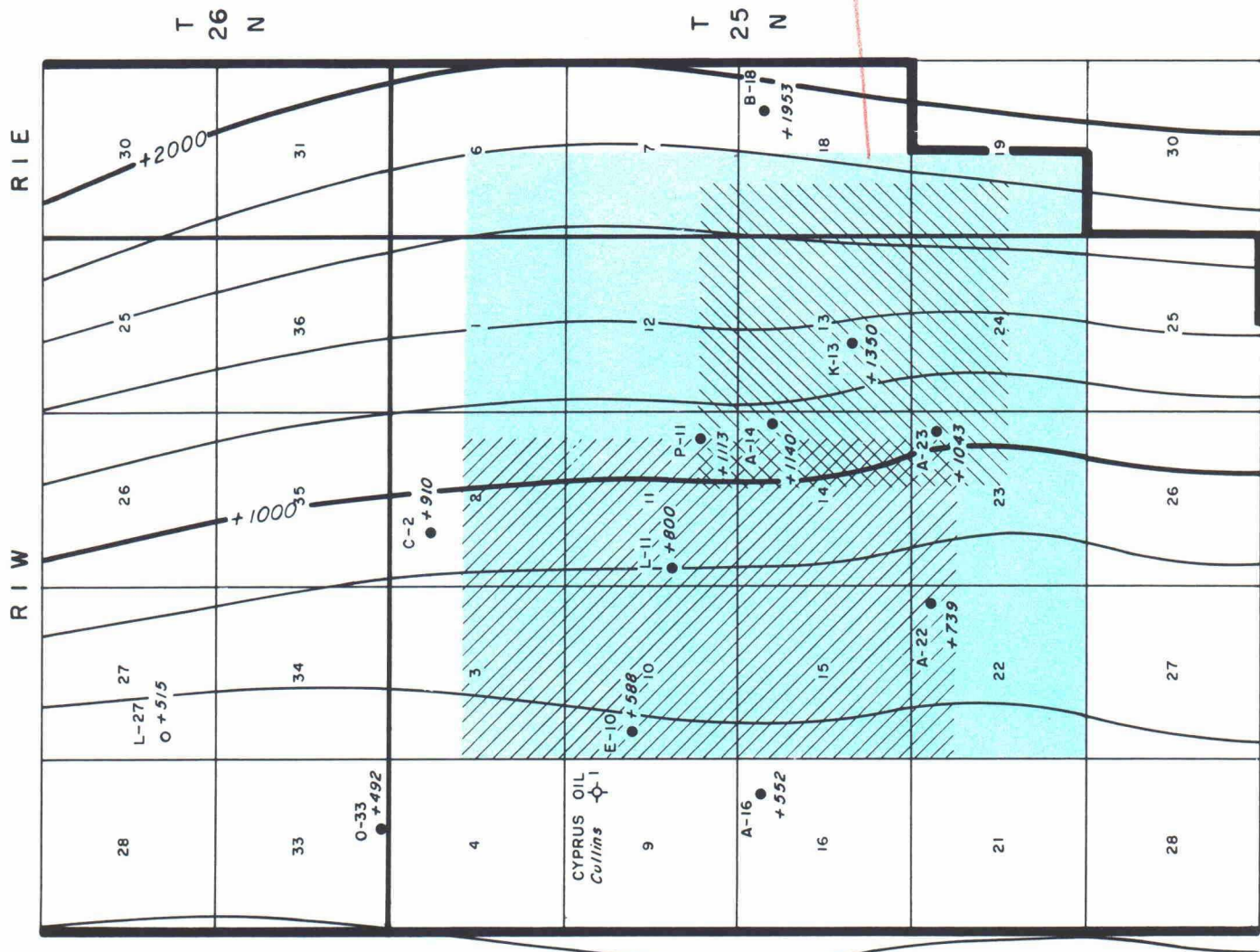
BOUNDARY OF NIOBRARA-
GREENHORN PARTICIPATING AREA

BOUNDARY OF CANADA
OJITOS UNIT

BOUNDARY OF WEST
PUERTO CHIQUITO POOL

BOUNDARY OF EAST
PUERTO CHIQUITO POOL

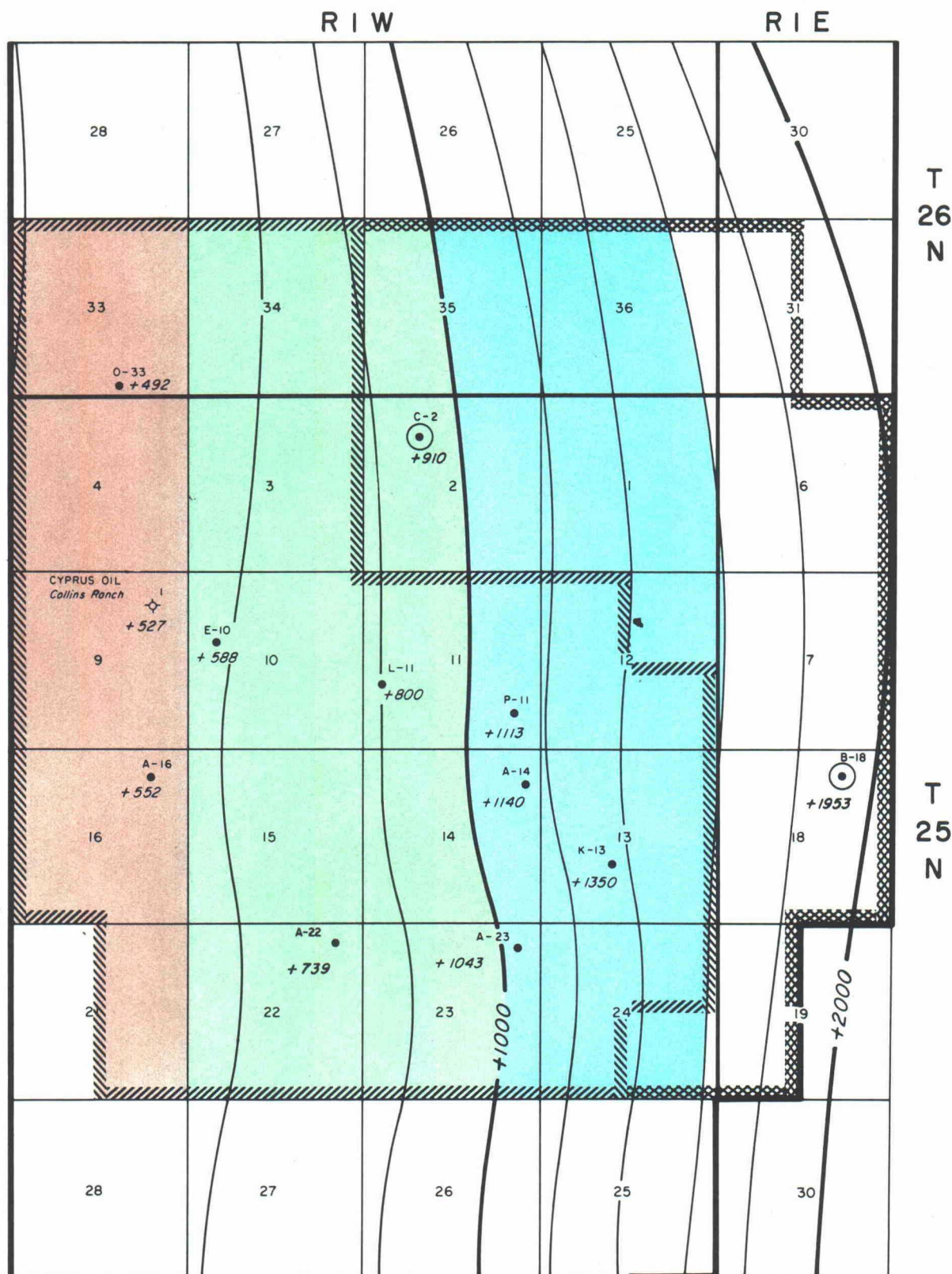
LEGEND



PLAT OF PART
OF
CAÑADA OJITOS UNIT
SHOWING ESTIMATED
RESERVOIR TRANSMISSIBILITY
BY AREAS OF TESTS

- 2.5 TO 3.5 DARCY FEET
- 10 TO 12 DARCY FEET
- 5 TO 10 DARCY FEET

CONTOURED ON TOP OF "A" MARKER
C. 1, 200'
NOVEMBER, 1969
— BOUNDARY OF CAÑADA OJITOS UNIT



PER ACRE OIL-IN-PLACE VALUES



1000 STOCK TANK BBLs.

1500 STOCK TANK BBLs.

2000 STOCK TANK BBLs.
1500

PLAT OF PART OF CAÑADA OJITOS UNIT
CONTOURED ON TOP OF ZONE "A"

CONTOUR INTERVAL 200'



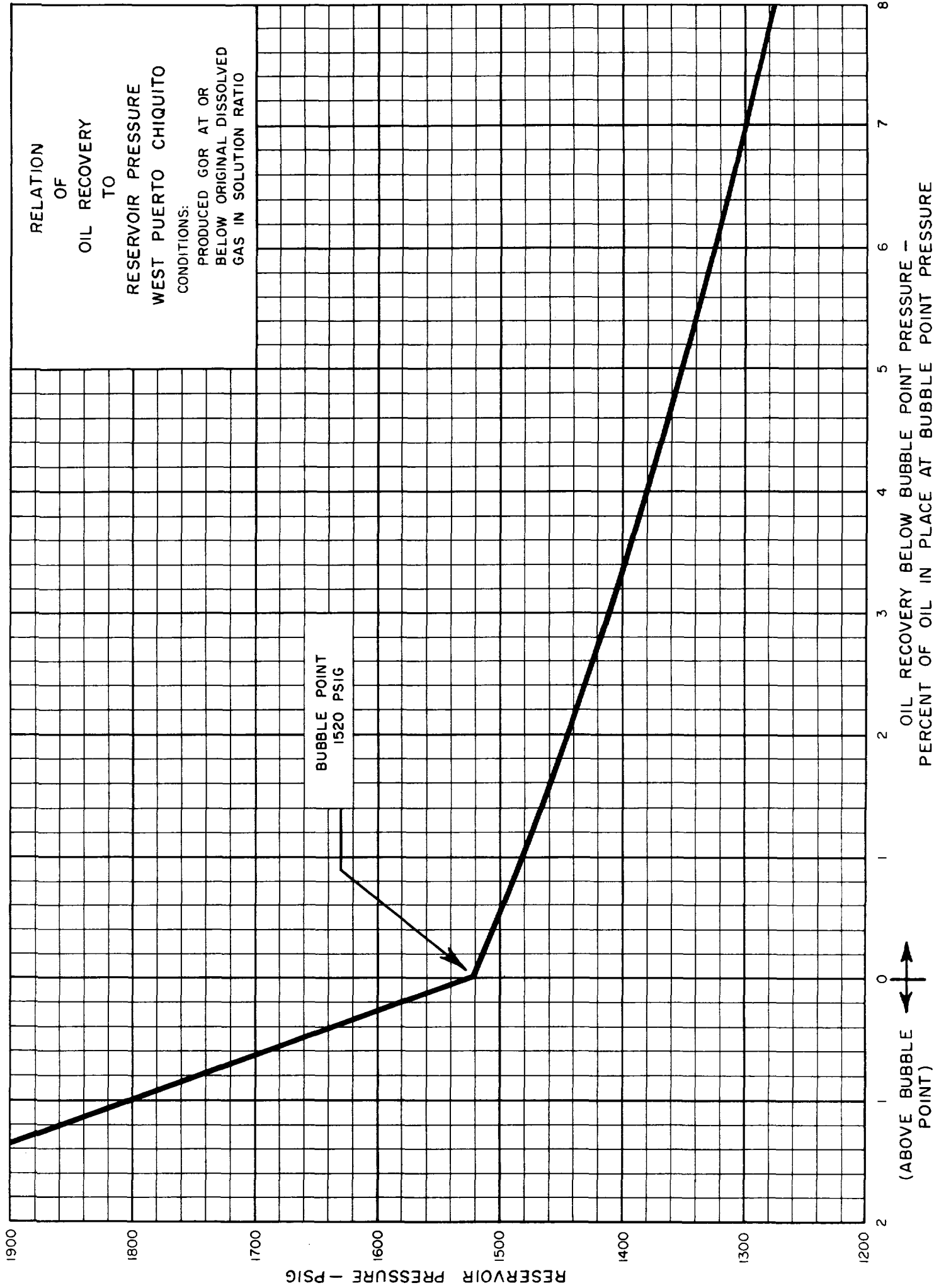
BOUNDARY OF NIOBRARA - GREENHORN
PARTICIPATING AREA AFTER PROPOSED
SIXTH EXPANSION



BOUNDARY OF PROPOSED SEVENTH
EXPANSION TO PARTICIPATING AREA

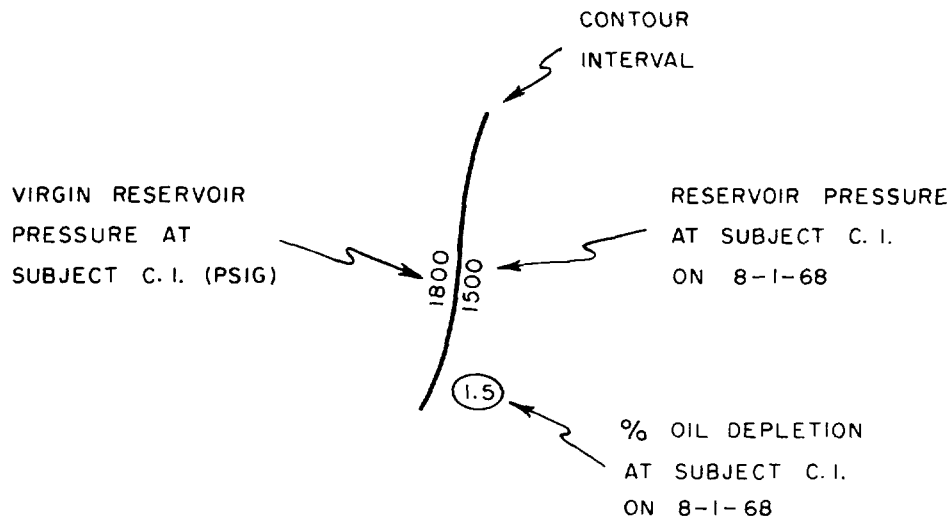


WELL WITHIN EXPANSION AREA DECEMBER, 1969
PROVIDING INFORMATION REGARDING EXPANSION



— LEGEND —

FOR 8-1-68 STATUS OF DEPLETION PLAT



← 1.0 →

AVERAGE DEPLETION ON 8-1-68 IN
% FOR AREA BETWEEN CONTOUR
INTERVALS INDICATED

ACRES 3602

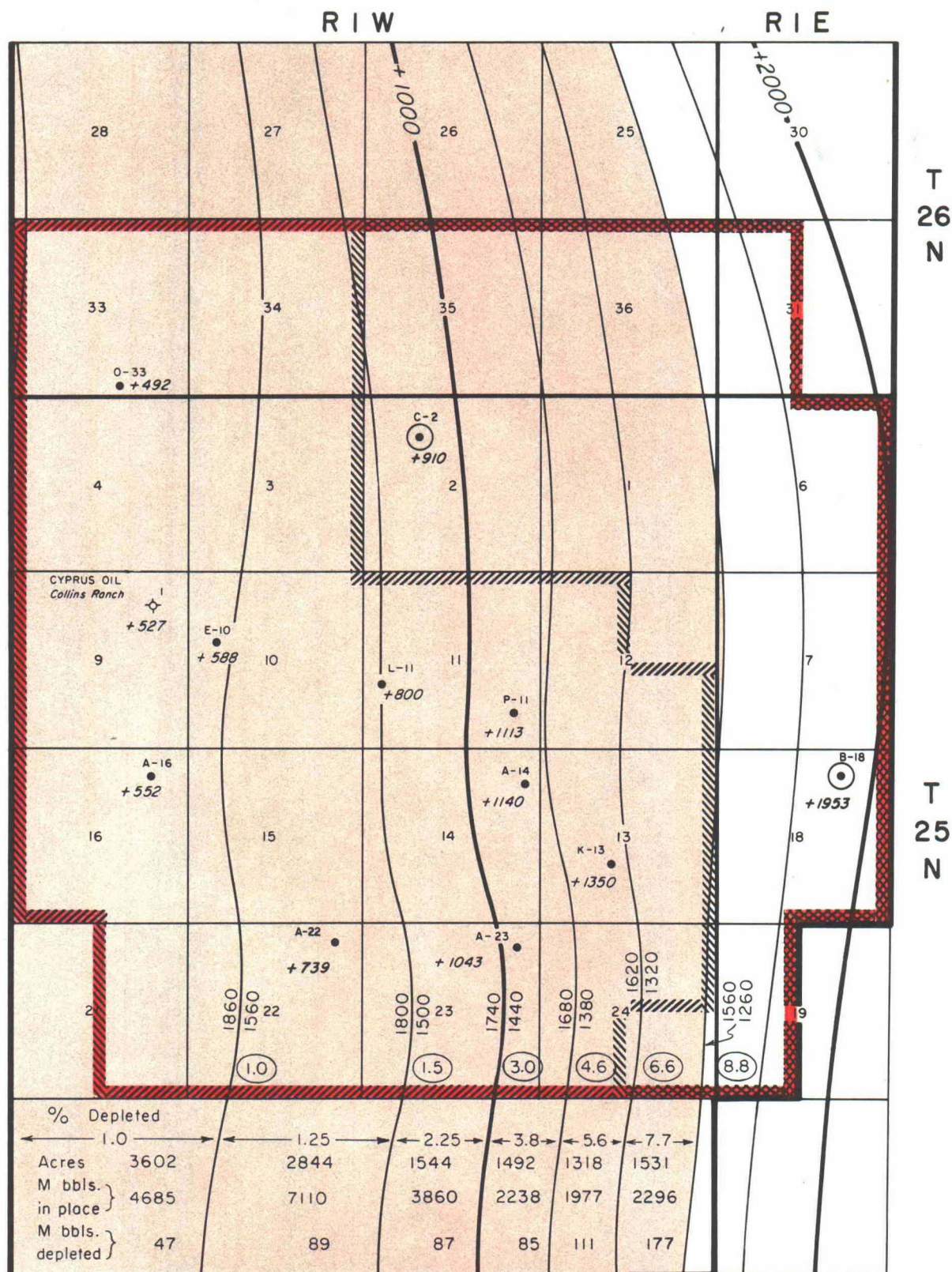
AREA BETWEEN CONTOUR
INTERVALS INDICATED BY
ARROWS

M BBLs.
IN PLACE 4685

OIL IN PLACE INITIALLY OF
AREA BETWEEN CONTOUR
INTERVALS INDICATED
(IN THOUSANDS OF STOCK TANK BBLs.)

M BBLs.
DEPLETED 47

AMOUNT OF DEPLETION OF
THE AREA BETWEEN CONTOUR
INTERVALS INDICATED AT 8-1-68
(IN THOUSANDS OF STOCK TANK BBLs.)



STATUS OF DEPLETION
OF RED OUTLINED AREA
ON 8-1-68

— LEGEND —
(see facing page)

PLAT OF PART OF CAÑADA OJITOS UNIT CONTOURED ON TOP OF ZONE "A"

CONTOUR INTERVAL 200'

BOUNDARY OF NIOBRARA - GREENHORN
PARTICIPATING AREA AFTER PROPOSED
SIXTH EXPANSION

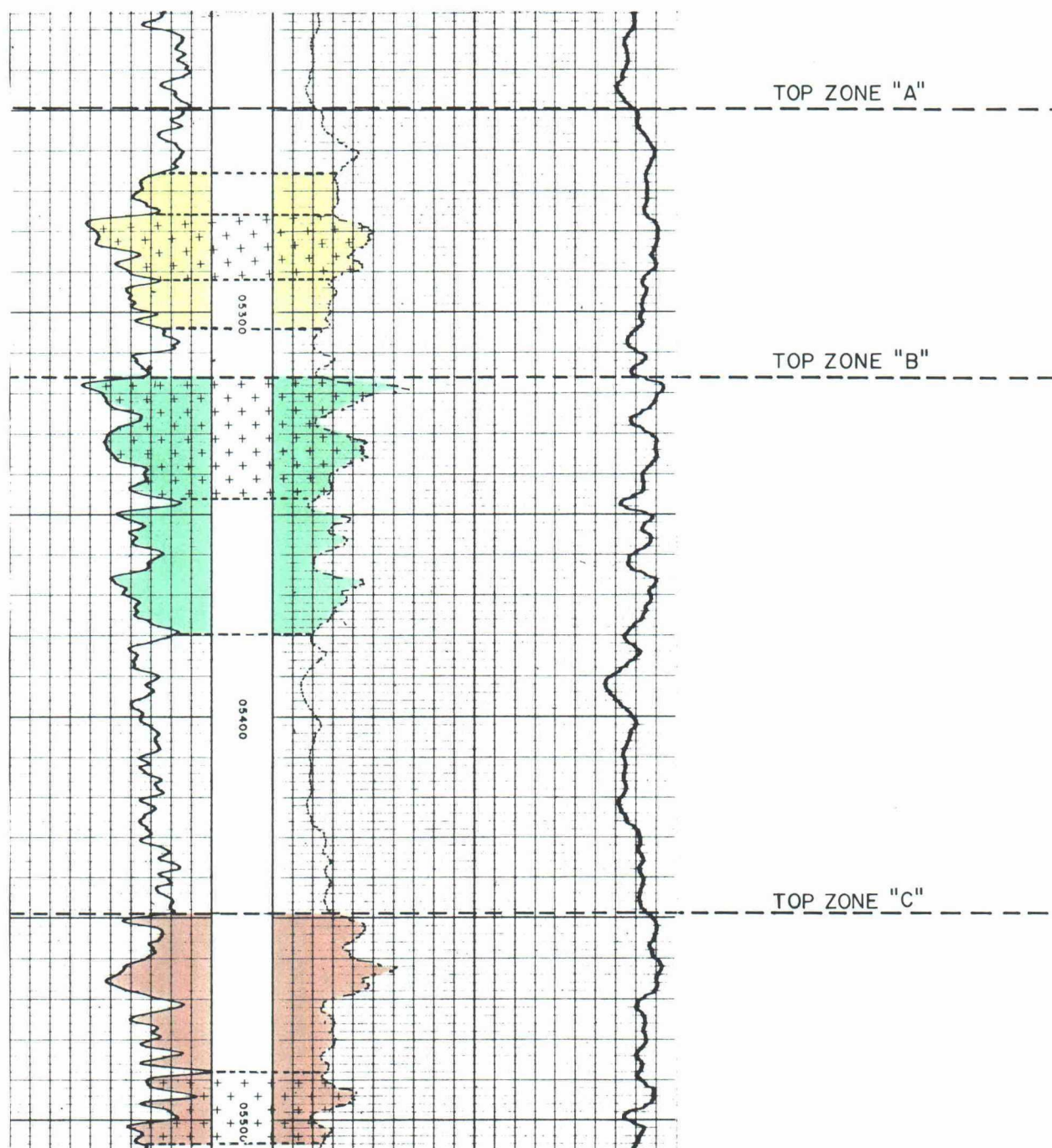
BOUNDARY OF PROPOSED SEVENTH
EXPANSION TO PARTICIPATING AREA

WELL WITHIN EXPANSION AREA DECEMBER, 1969
PROVIDING INFORMATION REGARDING EXPANSION

IDENTIFICATION OF MAIN PRODUCING ZONES
NORTHEAST PUERTO CHIQUITO
AND
SOUTHWEST PUERTO CHIQUITO

BENSON-MONTIN-GREER DRLG. CORP.

CAÑADA OJITOS UNIT NO. B-18



MAGNOLIA PET.
#1 Schmitz
NE 1/4 SE 1/4 SEC. 34
T 24 N-R1W
Elev.-G.L. 7302

READING & BATES, INC.
#1 Duff
NE 1/4 SE 1/4 SEC. 24
T 24 N-R1W
Elev.-G.L. 7174

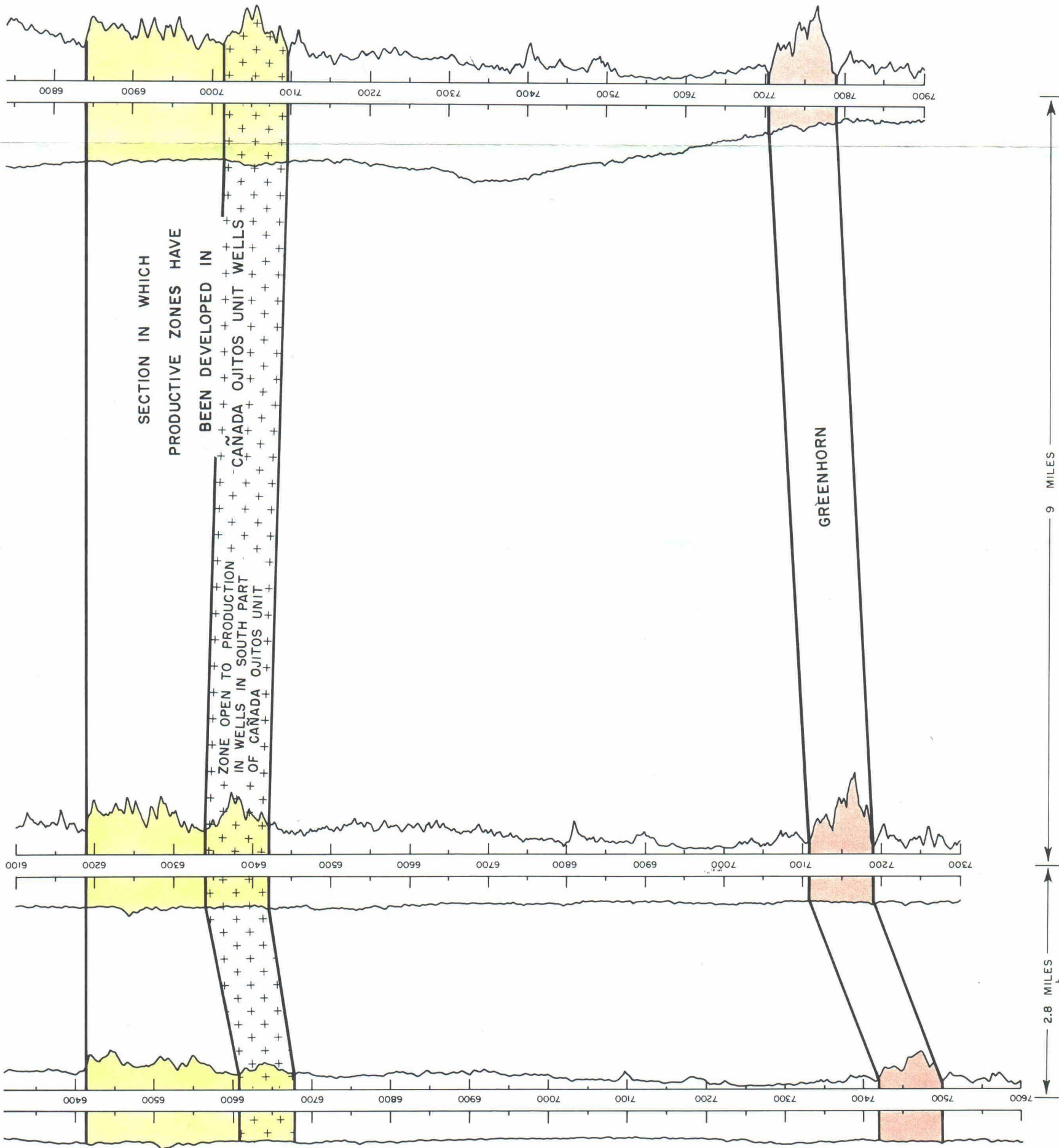
CYPRUS OIL
#1 Bolack - Federal
NE 1/4 NE 1/4 SEC. 9
T 25 N-R1W
Elev.-G.L. 7357

SOUTH-NORTH
CROSS-SECTION

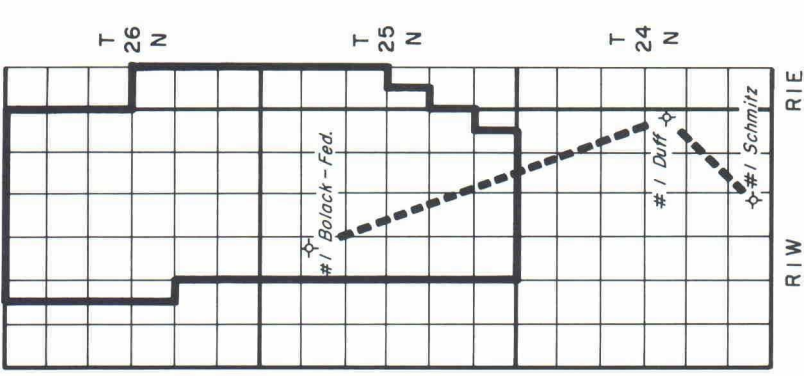
ARROYO BLANCO
TO
CAÑADA OJITOS UNIT

Rio Arriba County, New Mexico

—CONFIDENTIAL—



INDEX MAP SHOWING
LOCUS OF CROSS-SECTION



Boundary of Cañada
Ojitos Unit

2.8 MILES

9 MILES