



United States Department of the Interior  
Bureau of Land Management

500 North Loraine  
Midland, TX 79701

01 AUG 23 PM 1:02

August 20, 2001

Assistant District Manager  
Bureau of Land Management  
Roswell District Office  
2909 West 2<sup>nd</sup> Street  
Roswell, New Mexico 88201-2019

4402

New Mexico Oil Conservation Division  
1220 S. St. Francis Drive  
Santa Fe, New Mexico 87505

All Working Interest Owners

**COOPER JAL UNIT**

Secondary Recovery Unit  
Lea County, New Mexico

Ladies and Gentlemen:

As operator of the Cooper Jal Unit Texaco Exploration and Production Inc. (TEPI) submits for your approval a report of 2000 operations and a plan of development and operation for the year 2001. Enclosed are a unit map, unit production curve, and well status report.

**PAST OPERATIONS**

The Cooper Jal Unit became effective October 1, 1970. Injection into the Jalmat and Langlie Mattix Pools started in December 1970. The Unit operator converted additional wells to injection between 1971 and 1976. An infill drilling program occurred in the mid-1990's along with pattern adjustments.

Cumulative production from the Jalmat and Langlie Mattix Pools since unitization is 8.43 MMBO and 11.35 BCFG as of December 31, 2000. The average daily production was 501 BOPD, 617 MCFD, and 4731 BWPD during December, 2000. Cumulative injection into the Jalmat and Langlie Mattix Pools is 136,102 MBW through December 31, 2000. The average daily water injection rate during December 2000 was 6,695 barrels.

Bureau of Land Management,  
New Mexico OCD, &  
Working Interest Owners  
August 20, 2001  
Page 2

### **OPERATIONS SUMMARY FOR 2000**

Operations for the last year focused primarily on reducing operating expenses and maintaining lease profitability in a time of low oil prices. Several uneconomic or marginally economic patterns were shut-in.

### **DEVELOPMENT PLANS FOR 2001**

In 2001, TEPI plans to continue monitoring the waterflood redevelopment initiated during 1993, with emphasis on maintaining economic operations. Minor well work will be performed as warranted. Inactive wells will be reviewed, and wells will be plugged and abandoned as appropriate.

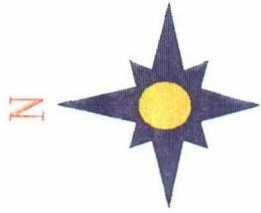
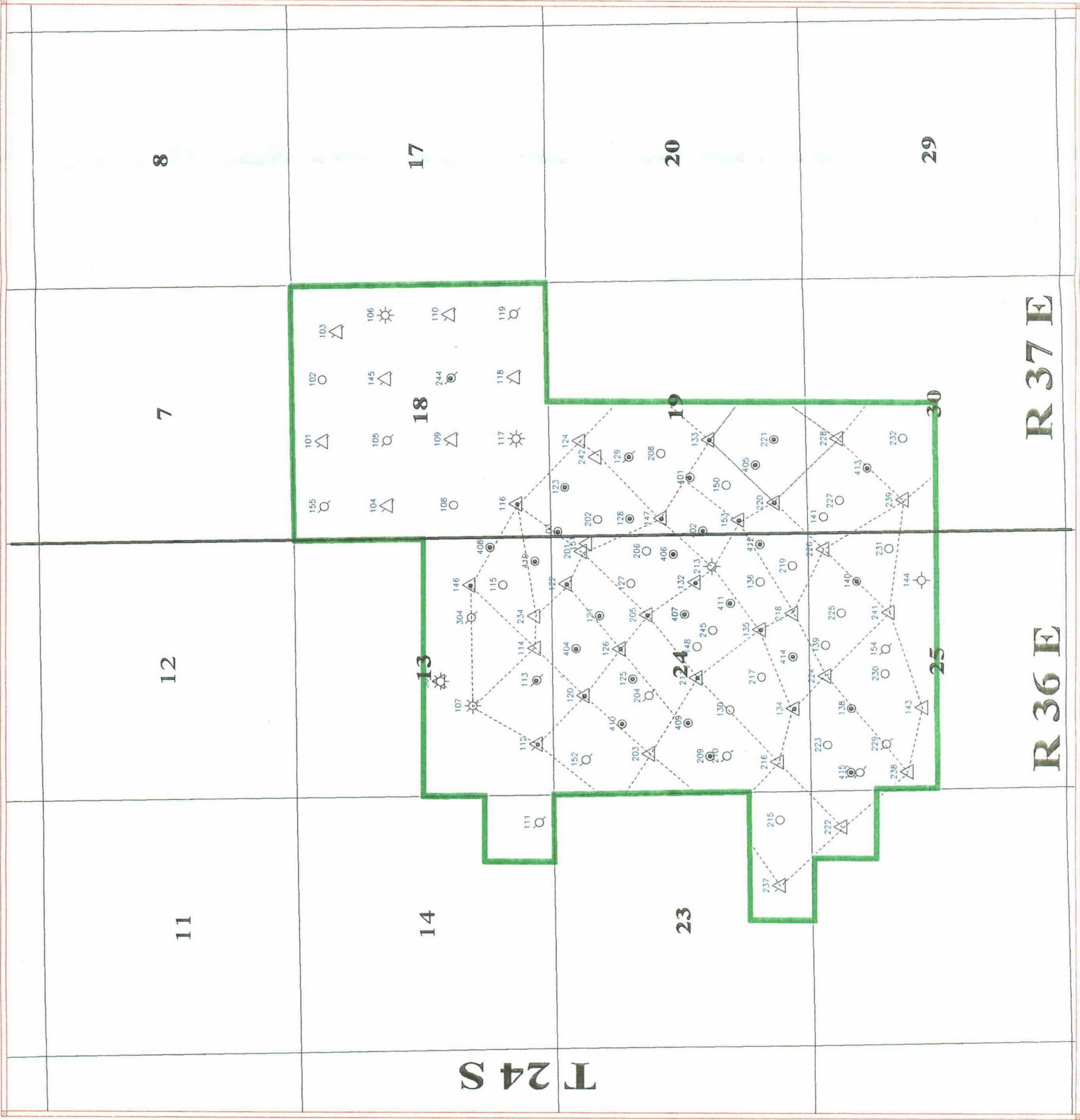
Yours very truly,

A handwritten signature in black ink, appearing to read 'Charles E. Sadler', with a stylized, cursive script.

Charles E. Sadler  
Asset Manager

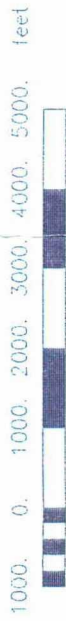
CRW-NAZ

Enclosure



- LEGEND
- SINGLE OIL PRODUCER
  - ◉ DHC OIL PRODUCER
  - △ WATER INJECTOR
  - ⊙ GAS PRODUCER
  - ⊗ SI DHC PRODUCER
  - △ SI WATER INJECTOR
  - ⊙ SI GAS PRODUCER
  - △ SI DUAL INJECTOR
  - △ DUAL INJECTOR

Scale 1:28900.4



TEXACO EXPLORATION AND PRODUCTION INC

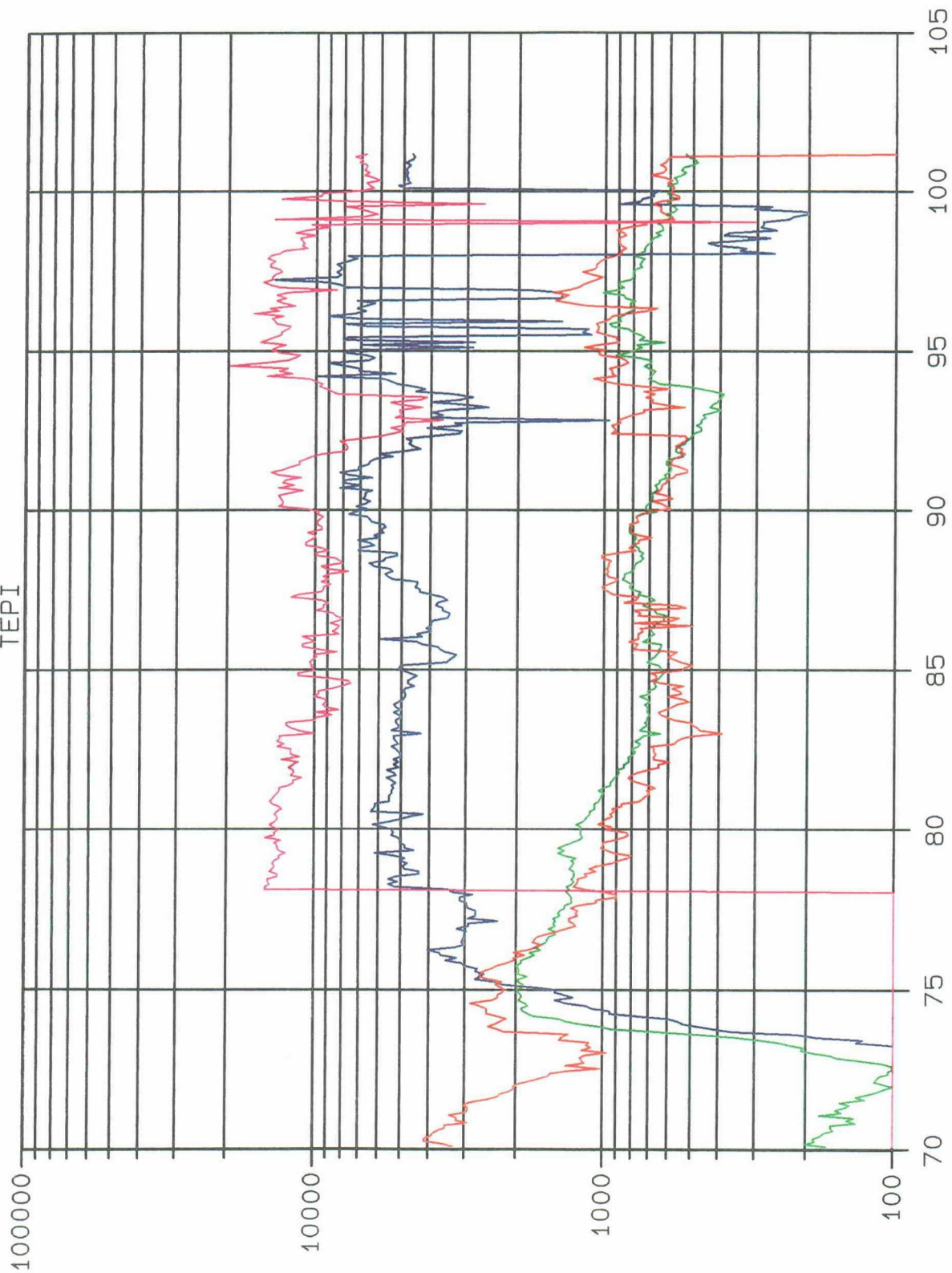
COOPER JAL UNIT  
LEA COUNTY, NEW MEXICO  
REDEVELOPMENT PROGRAM

CES

Scale 1:28900.4

3/25/97

COOPER JAL UNIT  
TEPI



YEARS

BOPD MCFFD BWPD BWIPD



COOPER JAL UNIT  
LEA COUNTY, NEW MEXICO  
WELL STATUS  
DECEMBER, 2000

WELL NO.	STATUS		WELL NO.	STATUS		WELL NO.	STATUS	
101	Active	Producer	204	Shut-In	Producer			
102	Shut-in	Producer	205	Active	Injector			
103	Shut-in	Injector	206	Shut-In	Producer			
104	Shut-in	Injector	208	Active	Producer			
105	Shut-in	Producer	209	Shut-in	Producer			
106	Active	Producer	210	Shut-in	Producer			
107	Shut-in	Producer	211	Active	Injector			
108	Shut-in	Producer	215	Active	Producer			
109	Shut-in	Injector	216	Active	Injector			
110	Active	Producer	217	Active	Producer			
111	Shut-in	Producer	218	Active	Injector			
112	Shut-in	Injector	219	Active	Producer			
113	Shut-in	Producer	220	Active	Injector			
114	Shut-in	Injector	221	Active	Producer			
115	Active	Producer	222	Shut-In	Injector			
116	Active	Injector	223	Active	Producer			
117	Active	Producer	224	Active	Injector			
118	Shut-in	Injector	225	Active	Producer			
119	Shut-in	Producer	226	Shut-in	Injector			
120	Active	Injector	227	Active	Producer			
121	Active	Producer	228	Active	Injector			
122	Active	Injector	229	Shut-in	Producer			
124	Shut-in	Injector	230	Shut-In	Producer			
125	Active	Producer	231	Active	Producer			
126	Shut-in	Injector	232	Shut-in	Producer			
127	Active	Producer	234	Active	Injector			
128	Active	Producer	237	Shut-in	Injector			
129	Shut-in	Producer	238	Active	Injector			
130	Active	Producer	239	Active	Injector			
132	Active	Injector	241	Active	Injector			
133	Active	Injector	242	Active	Injector			
134	Active	Injector	244	Shut-in	Producer			
135	Active	Injector	245	Active	Producer			
136	Active	Producer	303	Active	Producer			
138	Active	Producer	401	Active	Producer			
139	Active	Producer	402	Active	Producer			
140	Active	Producer	403	Shut-in	Producer			
141	Active	Producer	404	Active	Producer			
143	Shut-in	Injector	405	Active	Producer			
145	Shut-in	Injector	406	Active	Producer			
146	Active	Injector	407	Active	Producer			
147	Active	Injector	408	Active	Producer			
148	Shut-In	Producer	409	Active	Producer			
150	Active	Producer	411	Active	Producer			
151	Shut-In	Injector	412	Active	Producer			
152	Shut-in	Producer	413	Active	Producer			
153	Active	Injector	414	Active	Producer			
154	Shut-in	Producer	415	Active	Producer			
155	Shut-in	Producer	419	Active	Producer			
201	Active	Injector	420	Shut-in	Producer			
202	Active	Producer	421	Active	Producer			
203	Active	Injector	422	Active	Producer			



Texaco North America Production  
Permian Business Unit

500 North Loraine  
Midland TX 79701

P.O. Box 3109  
Midland TX 79702

NMOC.

**OPERATOR'S COPY**

#4402

January 28, 1999

Assistant District Manager  
Bureau of Land Management  
Roswell District Office  
2909 West 2<sup>nd</sup> Street  
Roswell, New Mexico 88201-2019



New Mexico Oil Conservation Division  
2040 S. Pacheco  
Santa Fe, New Mexico 87501

All Working Interest Owners  
(Address List Attached)

**COOPER JAL UNIT**  
Secondary Recovery Unit  
Lea County, New Mexico

RECEIVED

JAN 29 1999

BLM  
ROSWELL, N.M.

RECEIVED

JAN 29 1999

BLM  
ROSWELL, N.M.

APPROVED

FEB 11  
*Gay A. Stephen*  
AUTHORIZED OFFICER, MINERALS  
BUREAU OF LAND MANAGEMENT

Ladies and Gentlemen:

As operator of the Cooper Jal Unit Texaco Exploration and Production Inc. (TEPI) submits for your approval a report of 1998 operations and a plan of development and operation for the year 1999. Enclosed are a unit map, unit production curve, and well status report.

### **PAST OPERATIONS**

The Cooper Jal Unit became effective October 1, 1970. Injection into the Jalmat and Langlie Mattix Pools started in December 1970. The Unit operator converted additional wells to injection between 1971 and 1976. An infill drilling program occurred in the mid-1990's along with pattern adjustments.

Cumulative production from the Jalmat and Langlie Mattix Pools since unitization is 8.01 MMBO and 10.95 BCFG as of December 31, 1998. The average daily production was 673 BOPD, 800(Est.) MCFD, and 5,100 BWPD during December, 1998. Cumulative injection into the Jalmat and Langlie Mattix Pools is 130,751 MBW through December 31, 1998. The average daily water injection rate during December 1998 was 7,284 barrels.

Bureau of Land Management,  
New Mexico OCD, &  
Working Interest Owners  
January 28, 1999  
Page 2

### **OPERATIONS SUMMARY FOR 1998**

Operations for the last year focused primarily on reducing operating expenses and maintaining lease profitability in a time of low oil prices. Several uneconomic or marginally economic patterns were shut-in. A smaller injection pump was installed to reduce injection costs. The clean-up and remediation of numerous old battery sites was carried out.

### **DEVELOPMENT PLANS FOR 1999**

In 1999, TEPI plans to continue monitoring the waterflood redevelopment initiated during 1993, with emphasis on maintaining economic operations in a time of depressed oil prices. Minor well work will be performed as warranted.

Yours very truly,

A handwritten signature in cursive script, appearing to read "Charles E. Sadler".

Charles E. Sadler  
Asset Manager

CRW-NAZ

Enclosure

COOPER JAL UNIT  
LEA COUNTY, NEW MEXICO  
WELL STATUS  
DECEMBER, 1998

WELL NO.	STATUS		WELL NO.	STATUS		WELL NO.	STATUS	
101	Active	Producer	204	Shut-In	Producer			
102	Active	Producer	205	Active	Injector			
103	Shut-in	Injector	206	Shut-In	Producer			
104	Shut-in	Injector	208	Active	Producer			
105	Shut-in	Producer	209	Shut-in	Producer			
106	Active	Producer	210	Shut-in	Producer			
107	Active	Producer	211	Active	Injector			
108	Shut-in	Producer	215	Active	Producer			
109	Shut-in	Injector	216	Active	Injector			
110	Active	Producer	217	Active	Producer			
111	Shut-in	Producer	218	Active	Injector			
112	Shut-in	Injector	219	Active	Producer			
113	Shut-in	Producer	220	Active	Injector			
114	Active	Injector	221	Active	Producer			
115	Active	Producer	222	Shut-In	Injector			
116	Active	Injector	223	Active	Producer			
117	Active	Producer	224	Active	Injector			
118	Shut-in	Injector	225	Shut-in	Producer			
119	Shut-in	Producer	226	Active	Injector			
120	Active	Injector	227	Active	Producer			
121	Active	Producer	228	Active	Injector			
122	Active	Injector	229	Shut-in	Producer			
124	Shut-in	Injector	230	Shut-In	Producer			
125	Active	Producer	231	Active	Producer			
126	Active	Injector	232	Active	Producer			
127	Active	Producer	234	Active	Injector			
128	Active	Producer	237	Shut-in	Injector			
129	Shut-in	Producer	238	Active	Injector			
130	Active	Producer	239	Active	Injector			
132	Active	Injector	241	Active	Injector			
133	Active	Injector	242	Active	Injector			
134	Active	Injector	244	Shut-in	Producer			
135	Shut-In	Injector	245	Active	Producer			
136	Active	Producer	302	Shut-in	Producer			
138	Active	Producer	303	Active	Producer			
139	Active	Producer	401	Shut-in	Producer			
140	Active	Producer	402	Shut-in	Producer			
141	Active	Producer	403	Shut-in	Producer			
143	Active	Injector	404	Active	Producer			
145	Shut-in	Injector	405	Active	Producer			
146	Active	Injector	406	Active	Producer			
147	Active	Injector	407	Active	Producer			
148	Shut-In	Producer	408	Active	Producer			
150	Active	Producer	409	Active	Producer			
151	Shut-In	Injector	411	Active	Producer			
152	Shut-in	Producer	412	Active	Producer			
153	Active	Injector	413	Active	Producer			
154	Shut-in	Producer	414	Active	Producer			
155	Shut-in	Producer	415	Active	Producer			
201	Active	Injector	419	Active	Producer			
202	Active	Producer	421	Active	Producer			
203	Active	Injector	422	Active	Producer			

*4-11-97/0051A*  
*17-33 - Lea*

**THE WISER OIL COMPANY  
CAPROCK MALJAMAR UNIT**

**PLAN OF DEVELOPMENT  
1998**

Two new 20-acre infill producers and one new 10-acre infill producer were drilled and completed during the first ten months of 1998. A total of six existing wells were TA'd.

Two existing wells will be converted to injection during the remainder of 1998. No additional drilling or conversion work is planned for 1999. The waterflood will be monitored for effective and efficient performance and equipment repairs, well workovers and abandonment activities will be performed as necessary.

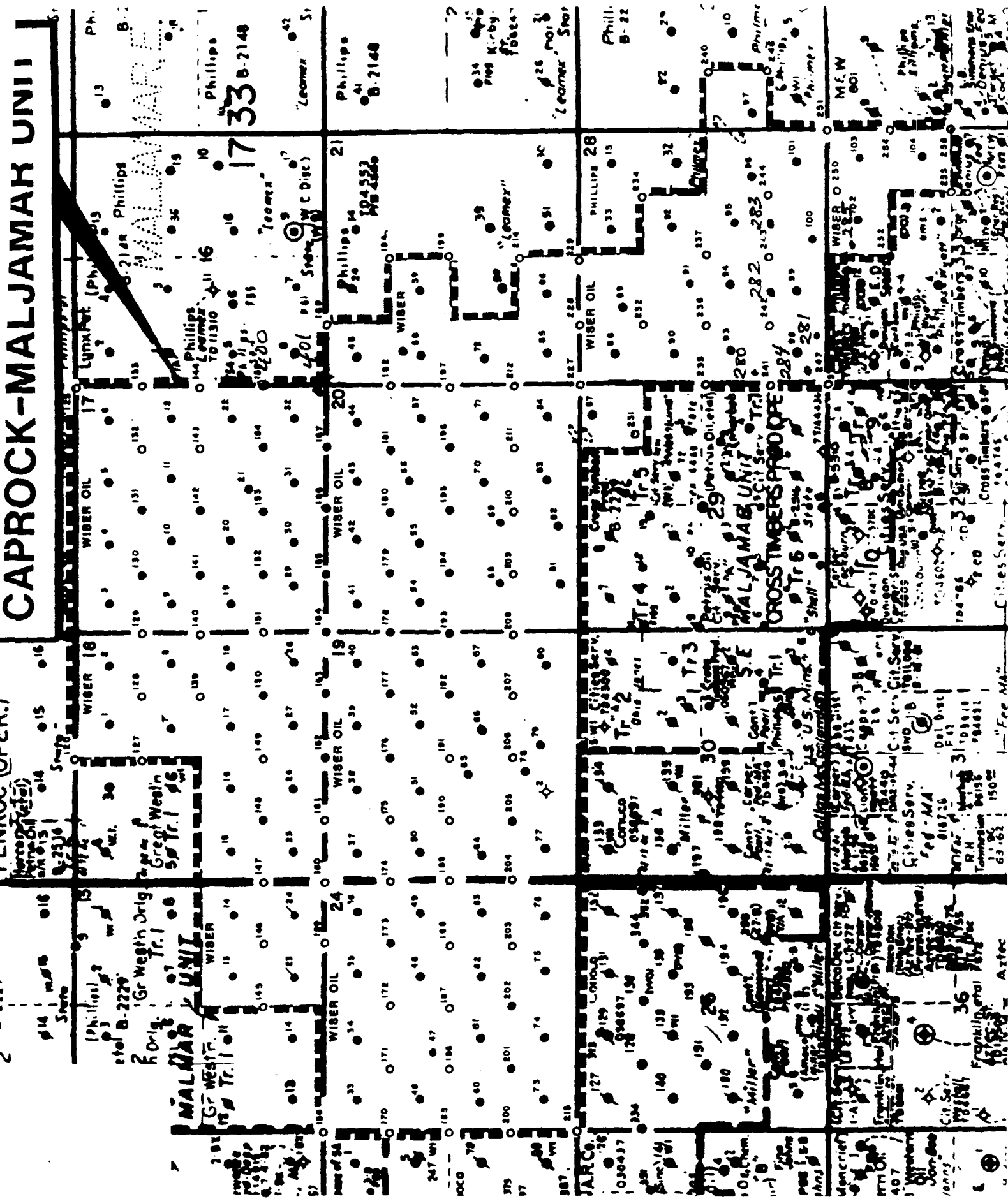
*01/11  
Feb  
Feb  
24 to  
AC*

**APPROVED**

FEB 11 1999  
*Mary C. Stephens*  
\_\_\_\_\_  
AUTHORIZED OFFICER, MINERALS  
BUREAU OF LAND MANAGEMENT



## 2



NEW WELLS - 1998  
NEW MEXICO

COMPLETED

LEASE	SPUD DATE	1ST PROD	TD	PERFS	IP TEST Oil/Gas/Wtr	FORMATION
SKELLY 402	11/20/97	01/02/98	3988	3477-3770	60/12/287	GRYBG & SAN AND
LEA D 21	11/02/97	01/02/98	4100	3483-3828	84/40/41	GRYBG & SAN AND
LEA D 22	09/26/97	01/06/98	4000	3456-3923	84/10/68	GRYBG & SAN AND
SKELLY 400	11/10/97	01/09/98	3922	3294-3541	114/56/181	GRYBG & SAN AND
SKELLY 401	10/26/97	01/12/98	3950	3296-3686	161/32/237	GRYBG & SAN AND
SKELLY 302	09/04/97	01/28/98	3800	2200-3531	46/1/99	GRYBG & SAN AND
CMU 285	01/07/98	01/30/98	4622	4421-4467	14/10/209	GRAYBURG
CMU 401	12/19/97	05/07/98	4925	4226-4402	14/5/43	GRAYBURG
STATE AZ 3	12/29/97	05/08/98	3759	3009-3257	95/88/37	GRYBG & SAN AND
CMU 400	12/12/97	06/09/98	4900	4424-4802	13/10/47	GRYBG & SAN AND



NEW MEXICO ENERGY, MINERALS  
& NATURAL RESOURCES DEPARTMENT

4402  
OIL CONSERVATION DIVISION  
2040 South Pacheco Street  
Santa Fe, New Mexico 87505  
(505) 827-7131

April 28, 1998

Charles E. Sadler  
Texaco Exploration & Production Inc.  
P. O. Box 3109  
Midland, TX 79702

RE: 1998 Plan of Development  
Cooper Jal Unit Area  
Secondary Recovery Unit  
Lea County, New Mexico

Gentlemen:

The New Mexico Oil Conservation Division is in receipt of your above referenced application which has been approved on this date. Our approval is subject to like approval by the New Mexico State Land Office and the Bureau of Land Management where applicable.

Should you have any questions pertaining to this matter, please contact me at (505) 827-8198.

Sincerely,

A handwritten signature in black ink, appearing to read "Roy E. Johnson".

Roy E. Johnson  
Senior Petroleum Geologist

REJ:kv

cc: NMSLO  
Bureau of Land Management - Roswell  
Unit File



U.S. DEPARTMENT OF THE INTERIOR  
BUREAU OF LAND MANAGEMENT

550 North Corraline  
Suite 616 74 79701

1000 North Corraline  
Suite 616 74 79701

April 13, 1998

Assistant District Manager  
Bureau of Land Management  
Roswell District Office  
1717 West Second Street  
Roswell, New Mexico 88201-2019

1717  
16  
1717

New Mexico Oil Conservation Division  
P. O. Box 2088  
Santa Fe, New Mexico 87501

All Working Interest Owners  
(Address List Attached)

**COOPER JAL UNIT**  
Secondary Recovery Unit  
Lea County, New Mexico

Ladies and Gentlemen:

As operator of the Cooper Jal Unit Texaco Exploration and Production Inc. (TEPI) submits for your approval a report of 1997 operations and a plan of development and operation for the year 1998. Enclosed are a unit map, unit production curve, and well status report.

### **PAST OPERATIONS**

The Cooper Jal Unit became effective October 1, 1970. Injection into the Jalmat and Langlie Mattix Pools started in December 1970. The Unit operator converted additional wells to injection between 1971 and 1976.

Cumulative production from the Jalmat and Langlie Mattix Pools since unitization is 7.76 MMBO and 10.64 BCFG as of December 31, 1997. The average daily production was 792 BOPD, 817 MCFD, and 7,707 BWPD during December, 1997. Cumulative injection into the Jalmat and Langlie Mattix Pools is 126,805,000 barrels through December 31, 1997. The average daily water injection rate during December 1997 was 14,931 barrels.

Bureau of Land Management,  
New Mexico OCD, &  
Working Interest Owners  
April 13, 1998  
Page 2

### **OPERATIONS SUMMARY FOR 1997**

Operations for the last year included the following:

- Performed workovers in six wells to temporarily abandon the Langlie Mattix and produce only from the Jalmat, to reduce water production.
- Shut in marginally economic patterns.
- Cleanout and/or acidize six wells to maintain efficient operations of the Unit.

### **DEVELOPMENT PLANS FOR 1998**

In 1998, TEPI plans to continue monitoring the waterflood redevelopment initiated during 1993. Our current development plan includes the following:

- Continue to monitor performance of producers drilled in 1993-96.
- Maintain current production through wellbore cleanout and stimulation of selected producers and injectors.

Yours very truly,



Charles E. Sadler  
Asset Manager

CRW-NAZ  
Enclosure



**COOPER JAL UNIT  
LEA COUNTY, NEW MEXICO  
WELL STATUS  
DECEMBER, 1997**

WELL NO.	STATUS		WELL NO.	STATUS		WELL NO.	STATUS	
101	Active	Producer	204	Active	Producer	422	Active	Producer
102	Active	Producer	205	Active	Injector			
103	Shut-in	Injector	206	Active	Producer			
104	Shut-in	Injector	208	Active	Producer			
105	Shut-in	Producer	209	Shut-in	Producer			
106	Active	Producer	210	Shut-in	Producer			
107	Active	Producer	211	Active	Injector			
108	Shut-in	Producer	215	Active	Producer			
109	Shut-in	Injector	216	Active	Injector			
110	Active	Producer	217	Active	Producer			
111	Shut-in	Producer	218	Active	Injector			
112	Shut-in	Injector	219	Active	Producer			
113	Shut-in	Producer	220	Active	Injector			
114	Active	Injector	221	Active	Producer			
115	Active	Producer	222	Active	Injector			
116	Active	Injector	223	Active	Producer			
117	Active	Producer	224	Active	Injector			
118	Shut-in	Injector	225	Shut-in	Producer			
119	Shut-in	Producer	226	Active	Injector			
120	Active	Injector	227	Active	Producer			
121	Active	Producer	228	Active	Injector			
122	Active	Injector	229	Shut-in	Producer			
123	Active	Producer	230	Active	Producer			
124	Shut-in	Injector	231	Active	Producer			
125	Active	Producer	232	Active	Producer			
126	Active	Injector	234	Active	Injector			
127	Active	Producer	237	Shut-in	Injector			
128	Active	Producer	238	Active	Injector			
129	Shut-in	Producer	239	Active	Injector			
130	Active	Producer	241	Active	Injector			
132	Active	Injector	242	Active	Injector			
133	Active	Injector	244	Shut-in	Producer			
134	Active	Injector	245	Active	Producer			
135	Active	Injector	302	Shut-in	Producer			
136	Active	Producer	303	Active	Producer			
138	Active	Producer	401	Shut-in	Producer			
139	Active	Producer	402	Shut-in	Producer			
140	Active	Producer	403	Shut-in	Producer			
141	Active	Producer	404	Active	Producer			
143	Active	Injector	405	Active	Producer			
145	Shut-in	Injector	406	Active	Producer			
146	Active	Injector	407	Active	Producer			
147	Active	Injector	408	Active	Producer			
148	Active	Producer	409	Active	Producer			
150	Active	Producer	410	Shut-in	Producer			
151	Active	Injector	411	Shut-in	Producer			
152	Shut-in	Producer	412	Active	Producer			
153	Active	Injector	413	Active	Producer			
154	Shut-in	Producer	414	Shut-in	Producer			
155	Shut-in	Producer	415	Active	Producer			
201	Active	Injector	419	Active	Producer			
202	Active	Producer	420	Active	Producer			
203	Active	Injector	421	Active	Producer			

ARCO Permian  
A Unit of Atlantic Richfield Company  
P. O. Box 1610  
Midland, TX 79702

George Bauerdorf Estate  
9363 Wilshire Boulevard, Suite 211  
Beverly Hills, CA 90210

Emilie S. Blaine  
715 Forest Trace  
Rockwall, TX 75087

James A. Davidson  
P. O. Box 494  
Midland, TX 79702

Exxon Company, USA  
Joint Interest Group  
P. O. Box 4707  
Houston, TX 77210-4707

Robert Kruse  
P. O. Box 327  
Key West, FL 33040

Robert Kruse  
P. O. Box 327  
Key West, FL 33040

McBride Oil & Gas Corp.  
P. O. Box 1515  
Roswell, NM 88202

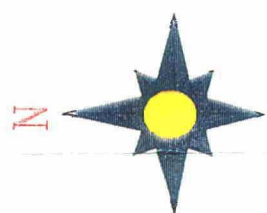
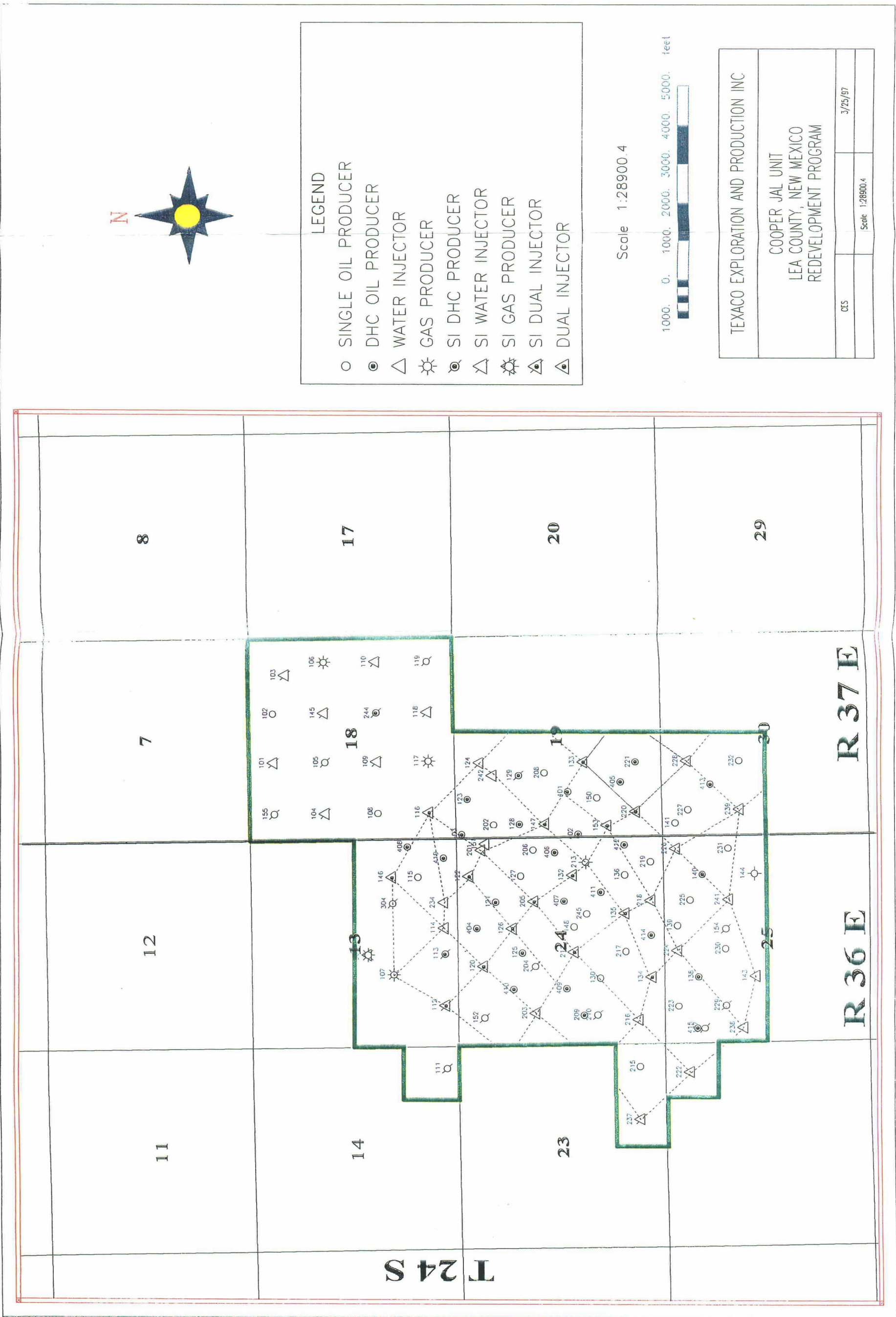
Larry A. Nermyr  
HC-57, Box 4106  
Sidney, MT 59270

Costilla Energy LLC  
P. O. Box 10369  
Midland, TX 79702

Mark L. Shidler, Inc.  
Petroleum Exploration & Production  
1010 Lamar, Suite 500  
Houston, Texas 77002

Adele I. Sowell Estate  
10721 45th Avenue S.E.  
Everett, WA 98208

Sunwest Bank of Albuquerque  
Trustee of the T. J. and  
Mary Ray Sivley Trust  
P. O. Box 26900  
Albuquerque, NM 87125-6900



LEGEND

- SINGLE OIL PRODUCER
- DHC OIL PRODUCER
- △ WATER INJECTOR
- ☼ GAS PRODUCER
- ⊗ SI DHC PRODUCER
- ▽ SI WATER INJECTOR
- ☼ SI GAS PRODUCER
- △ SI DUAL INJECTOR
- △ DUAL INJECTOR

Scale 1:28900.4



TEXACO EXPLORATION AND PRODUCTION INC			
COOPER JAL UNIT			
LEA COUNTY, NEW MEXICO			
REDEVELOPMENT PROGRAM			
CES			3/25/97
		Scale 1:28900.4	



500 West Corral  
Albuquerque, NM 87101

500 West Corral  
Albuquerque, NM 87101

April 13, 1998

Assistant District Manager  
Bureau of Land Management  
Roswell District Office  
1717 West Second Street  
Roswell, New Mexico 88201-2019

New Mexico Oil Conservation Division  
P. O. Box 2088  
Santa Fe, New Mexico 87501

All Working Interest Owners  
(Address List Attached)

**COOPER JAL UNIT**  
Secondary Recovery Unit  
Lea County, New Mexico

Ladies and Gentlemen:

As operator of the Cooper Jal Unit Texaco Exploration and Production Inc. (TEPI) submits for your approval a report of 1997 operations and a plan of development and operation for the year 1998. Enclosed are a unit map, unit production curve, and well status report.

**PAST OPERATIONS**

The Cooper Jal Unit became effective October 1, 1970. Injection into the Jalmat and Langlie Mattix Pools started in December 1970. The Unit operator converted additional wells to injection between 1971 and 1976.

Cumulative production from the Jalmat and Langlie Mattix Pools since unitization is 7.76 MMBO and 10.64 BCFG as of December 31, 1997. The average daily production was 792 BOPD, 817 MCFD, and 7,707 BWPD during December, 1997. Cumulative injection into the Jalmat and Langlie Mattix Pools is 126,805,000 barrels through December 31, 1997. The average daily water injection rate during December 1997 was 14,931 barrels.

Bureau of Land Management,  
New Mexico OCD, &  
Working Interest Owners  
April 13, 1998  
Page 2

### **OPERATIONS SUMMARY FOR 1997**

Operations for the last year included the following:

- Performed workovers in six wells to temporarily abandon the Langlie Mattix and produce only from the Jalmat, to reduce water production.
- Shut in marginally economic patterns.
- Cleanout and/or acidize six wells to maintain efficient operations of the Unit.

### **DEVELOPMENT PLANS FOR 1998**

In 1998, TEPI plans to continue monitoring the waterflood redevelopment initiated during 1993. Our current development plan includes the following:

- Continue to monitor performance of producers drilled in 1993-96.
- Maintain current production through wellbore cleanout and stimulation of selected producers and injectors.

Yours very truly,



Charles E. Sadler  
Asset Manager

CRW-NAZ  
Enclosure



**COOPER JAL UNIT  
LEA COUNTY, NEW MEXICO  
WELL STATUS  
DECEMBER, 1997**

WELL NO.	STATUS		WELL NO.	STATUS		WELL NO.	STATUS	
101	Active	Producer	204	Active	Producer	422	Active	Producer
102	Active	Producer	205	Active	Injector			
103	Shut-in	Injector	206	Active	Producer			
104	Shut-in	Injector	208	Active	Producer			
105	Shut-in	Producer	209	Shut-in	Producer			
106	Active	Producer	210	Shut-in	Producer			
107	Active	Producer	211	Active	Injector			
108	Shut-in	Producer	215	Active	Producer			
109	Shut-in	Injector	216	Active	Injector			
110	Active	Producer	217	Active	Producer			
111	Shut-in	Producer	218	Active	Injector			
112	Shut-in	Injector	219	Active	Producer			
113	Shut-in	Producer	220	Active	Injector			
114	Active	Injector	221	Active	Producer			
115	Active	Producer	222	Active	Injector			
116	Active	Injector	223	Active	Producer			
117	Active	Producer	224	Active	Injector			
118	Shut-in	Injector	225	Shut-in	Producer			
119	Shut-in	Producer	226	Active	Injector			
120	Active	Injector	227	Active	Producer			
121	Active	Producer	228	Active	Injector			
122	Active	Injector	229	Shut-in	Producer			
123	Active	Producer	230	Active	Producer			
124	Shut-in	Injector	231	Active	Producer			
125	Active	Producer	232	Active	Producer			
126	Active	Injector	234	Active	Injector			
127	Active	Producer	237	Shut-in	Injector			
128	Active	Producer	238	Active	Injector			
129	Shut-in	Producer	239	Active	Injector			
130	Active	Producer	241	Active	Injector			
132	Active	Injector	242	Active	Injector			
133	Active	Injector	244	Shut-in	Producer			
134	Active	Injector	245	Active	Producer			
135	Active	Injector	302	Shut-in	Producer			
136	Active	Producer	303	Active	Producer			
138	Active	Producer	401	Shut-in	Producer			
139	Active	Producer	402	Shut-in	Producer			
140	Active	Producer	403	Shut-in	Producer			
141	Active	Producer	404	Active	Producer			
143	Active	Injector	405	Active	Producer			
145	Shut-in	Injector	406	Active	Producer			
146	Active	Injector	407	Active	Producer			
147	Active	Injector	408	Active	Producer			
148	Active	Producer	409	Active	Producer			
150	Active	Producer	410	Shut-in	Producer			
151	Active	Injector	411	Shut-in	Producer			
152	Shut-in	Producer	412	Active	Producer			
153	Active	Injector	413	Active	Producer			
154	Shut-in	Producer	414	Shut-in	Producer			
155	Shut-in	Producer	415	Active	Producer			
201	Active	Injector	419	Active	Producer			
202	Active	Producer	420	Active	Producer			
203	Active	Injector	421	Active	Producer			

ARCO Permian  
A Unit of Atlantic Richfield Company  
P. O. Box 1610  
Midland, TX 79702

George Bauerdorf Estate  
9363 Wilshire Boulevard, Suite 211  
Beverly Hills, CA 90210

Emilie S. Blaine  
715 Forest Trace  
Rockwall, TX 75087

James A. Davidson  
P. O. Box 494  
Midland, TX 79702

Exxon Company, USA  
Joint Interest Group  
P. O. Box 4707  
Houston, TX 77210-4707

Robert Kruse  
P. O. Box 327  
Key West, FL 33040

Robert Kruse  
P. O. Box 327  
Key West, FL 33040

McBride Oil & Gas Corp.  
P. O. Box 1515  
Roswell, NM 88202

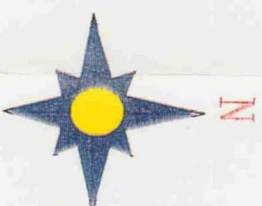
Larry A. Nermeyr  
HC-57, Box 4106  
Sidney, MT 59270

Costilla Energy LLC  
P. O. Box 10369  
Midland, TX 79702

Mark L. Shidler, Inc.  
Petroleum Exploration & Production  
1010 Lamar, Suite 500  
Houston, Texas 77002

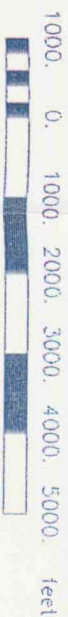
Adele I. Sowell Estate  
10721 45th Avenue S.E.  
Everett, WA 98208

Sunwest Bank of Albuquerque  
Trustee of the T. J. and  
Mary Ray Sivley Trust  
P. O. Box 26900  
Albuquerque, NM 87125-6900

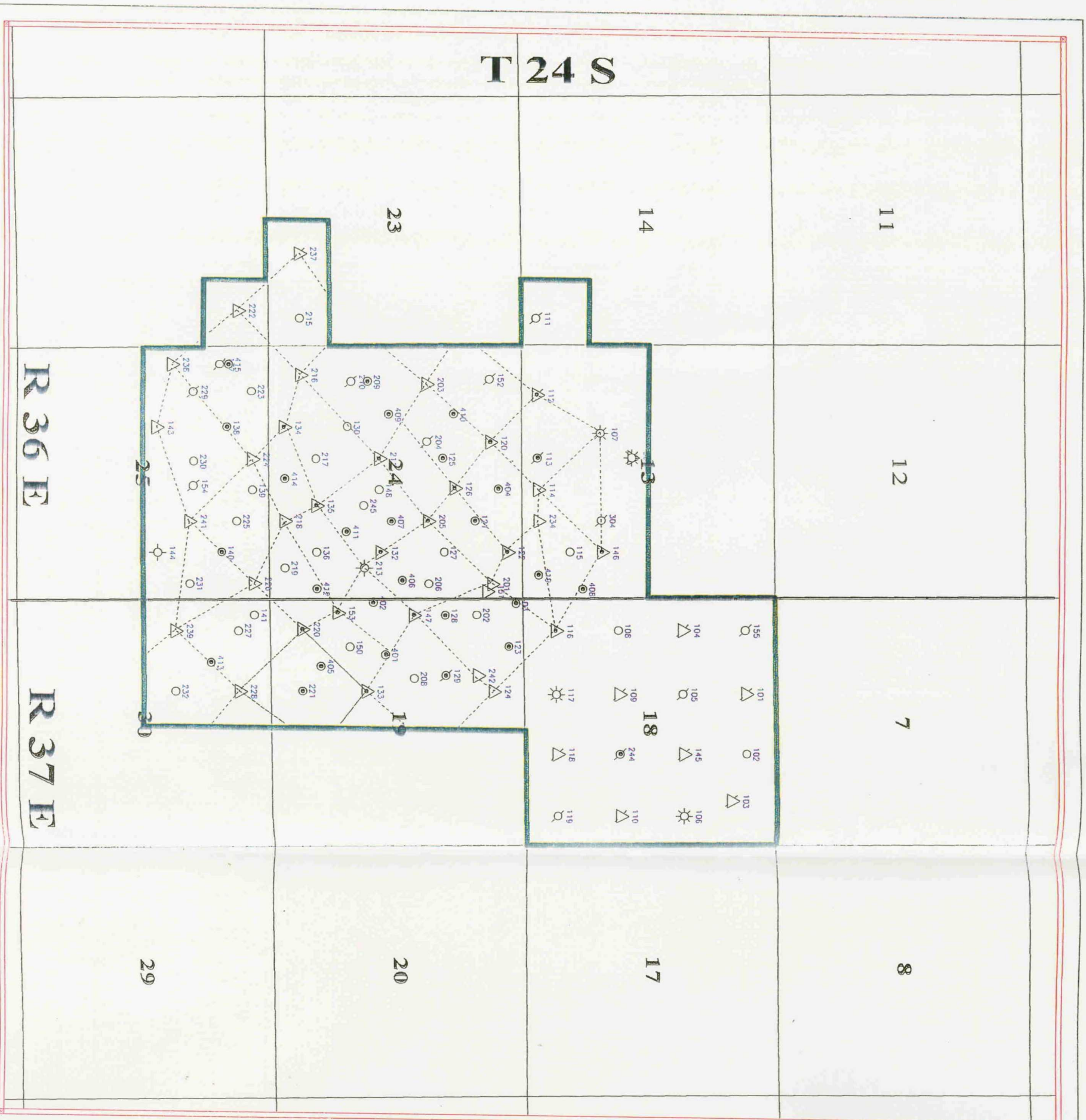


- LEGEND
- SINGLE OIL PRODUCER
  - DHC OIL PRODUCER
  - △ WATER INJECTOR
  - ☀ GAS PRODUCER
  - ⊗ SI DHC PRODUCER
  - ▽ SI WATER INJECTOR
  - ⊙ SI GAS PRODUCER
  - ⊕ SI DUAL INJECTOR
  - ⊖ DUAL INJECTOR

Scale 1:28900.4



TEXACO EXPLORATION AND PRODUCTION INC			
COOPER JAL UNIT			
LEA COUNTY, NEW MEXICO			
REDEVELOPMENT PROGRAM			
CIS			3/25/97
	Scale 1:28900.4		





3/18/97 4402  
D-Unit letter  
Tlx

March 26, 1997

Assistant District Manager  
Bureau of Land Management  
Roswell District Office  
1717 West Second Street  
Roswell, New Mexico 88201-2019

APR 17 1997

Commissioner of Public Lands  
P. O. Box 1148  
Santa Fe, New Mexico 87504-1148

New Mexico Oil Conservation Division  
P. O. Box 2088  
Santa Fe, New Mexico 87501

All Working Interest Owners  
(Address List Attached)

**COOPER JAL UNIT**  
Secondary Recovery Unit  
Lea County, New Mexico

Ladies and Gentlemen:

As operator of the Cooper Jal Unit Texaco Exploration and Production Inc. (TEPI) submits for your approval a report of 1996 operations and a plan of development and operation for the year 1997. Enclosed are a unit map, unit production curve, and well status report.

**PAST OPERATIONS**

The Cooper Jal Unit became effective October 1, 1970. Injection into the Jalmat and Langlie Mattix Pools started in December 1970. The Unit operator converted additional wells to injection between 1971 and 1976.

Cumulative production from the Jalmat and Langlie Mattix Pools since unitization is 7.47 MMBO and 10.25 BCFG as of December 31, 1996. The average daily production was 868 BOPD, 1251 MCFD, and 7,845 BWPD during December, 1996.

Bureau of Land Management,  
Commissioner of Public Lands,  
New Mexico OCD, &  
Working Interest Owners  
March 26, 1997  
Page 2

Cumulative injection into the Jalmat and Langlie Mattix Pools is 121,412,206 barrels through December 31, 1996. The average daily water injection rate during December 1996 was 14,124 barrels.

### **OPERATIONS SUMMARY FOR 1996**

Operations for the last year included the following:

- Drilled and completed three producers in the Jalmat and Langlie Mattix (commingled).
- Performed workovers in three wells to open the Jalmat gas zone and fracture-stimulate.
- Performed workovers to open additional pay in ten producers and stimulate with acid.
- Shut in marginally economic patterns.
- Performed wellbore cleanouts and returned shut-in wells to active service as needed to maintain efficient operations of the Unit.

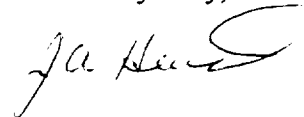
### **DEVELOPMENT PLANS FOR 1997**

In 1997, TEPI plans to continue monitoring the waterflood redevelopment initiated during 1993. Our current development plan includes the following:

- Continue to monitor performance of producers drilled in 1993-96.
- Recomplete wells as Jalmat gas producers as warranted.
- Open additional Jalmat pay in one producing well.
- Maintain current production through wellbore cleanout and stimulation of selected producers and injectors.

The current plan of development for 1997 may change through the year based on current oil prices and results from the 1993, 1994, 1995 and 1996 development.

Yours very truly,



J. A. Head  
Asset Manager

CRW-NAZ  
Enclosure



**ARCO Permian  
A Unit of Atlantic Richfield Company  
P. O. Box 1610  
Midland, TX 79702**

**George Bauerdorf Estate  
9363 Wilshire Boulevard, Suite 211  
Beverly Hills, CA 90210**

**Emilie S. Blaine  
715 Forest Trace  
Rockwall, TX 75087**

**James A. Davidson  
P. O. Box 494  
Midland, TX 79702**

**Exxon Company, USA  
Joint Interest Group  
P. O. Box 4707  
Houston, TX 77210-4707**

**Robert Kruse  
P. O. Box 327  
Key West, FL 33040**

**Robert Kruse  
P. O. Box 327  
Key West, FL 33040**

**McBride Oil & Gas Corp.  
P. O. Box 1515  
Roswell, NM 88202**

**Larry A. Nermyr  
HC-57, Box 4106  
Sidney, MT 59270**

**Costilla Energy LLC  
P. O. Box 10369  
Midland, TX 79702**

**Mark Shidler Inc.  
911 Walker, Suite 565  
Houston, TX 77002**

**Adele I. Sowell Estate  
10721 45th Avenue S.E.  
Everett, WA 98208**

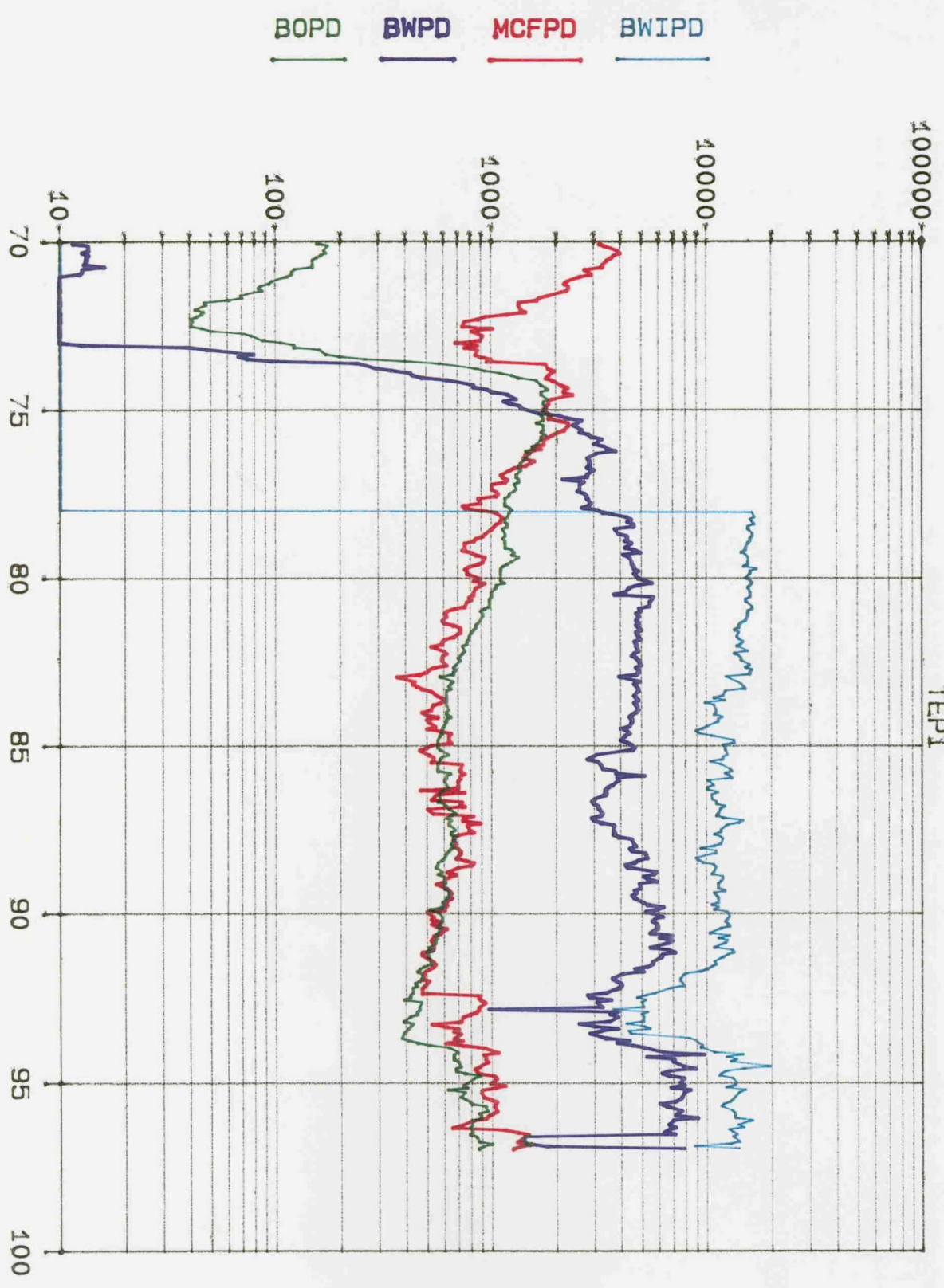
**Sunwest Bank of Albuquerque  
Trustee of the T. J. and  
Mary Ray Sivley Trust  
P. O. Box 26900  
Albuquerque, NM 87125-6900**

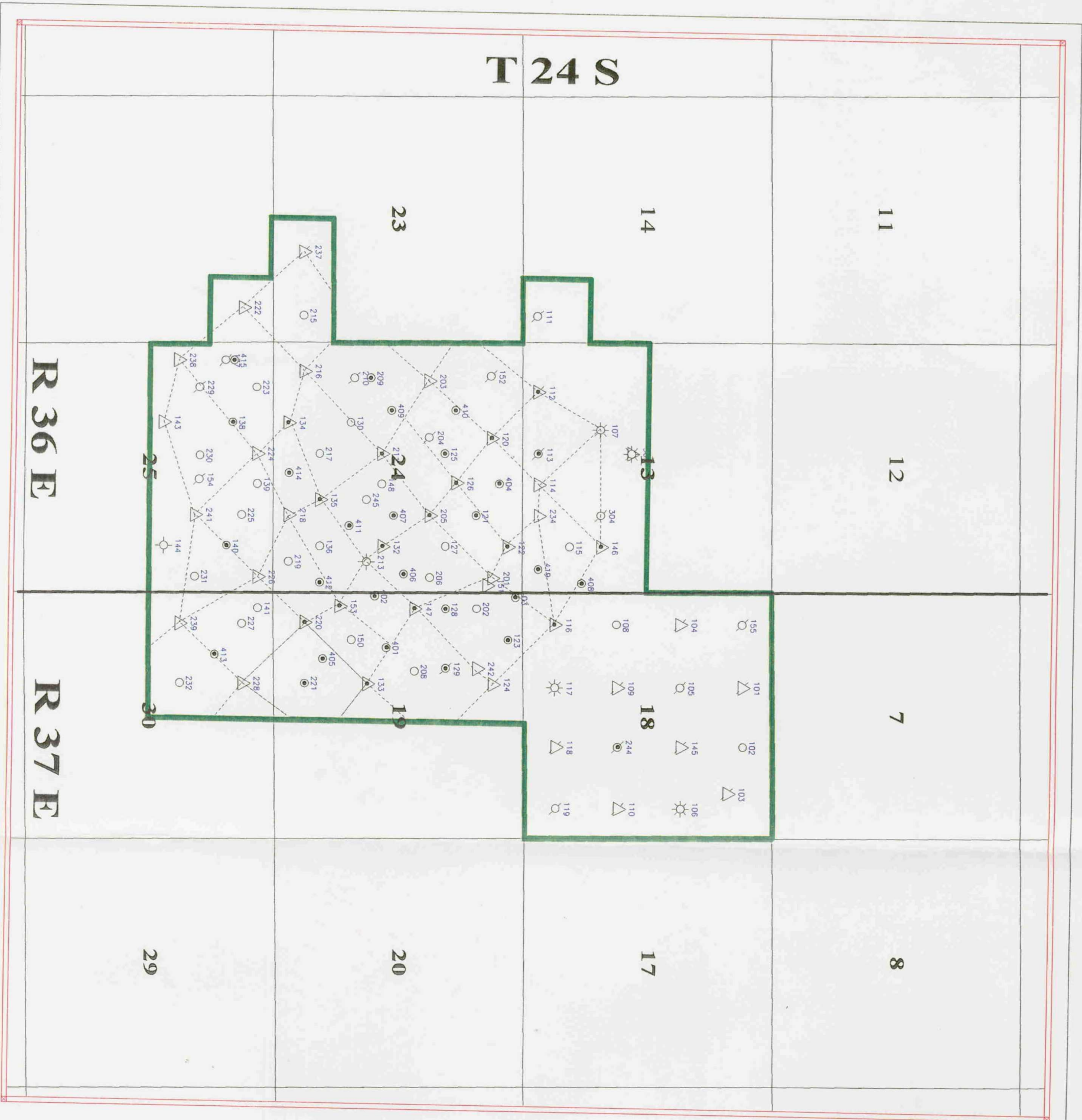
**COOPER JAL UNIT  
LEA COUNTY, NEW MEXICO  
WELL STATUS  
DECEMBER, 1996**

WELL NO.	STATUS		WELL NO.	STATUS		WELL NO.	STATUS	
101	Active	Producer	204	Shut-in	Producer	422	Active	Producer
102	Active	Producer	205	Active	Injector			
103	Shut-in	Injector	206	Active	Producer			
104	Shut-in	Injector	208	Active	Producer			
105	Shut-in	Producer	209	Shut-in	Producer			
106	Active	Producer	210	Shut-in	Producer			
107	Active	Producer	211	Active	Injector			
108	Shut-in	Producer	215	Active	Producer			
109	Shut-in	Injector	216	Active	Injector			
110	Active	Producer	217	Active	Producer			
111	Shut-in	Producer	218	Active	Injector			
112	Shut-in	Injector	219	Active	Producer			
113	Shut-in	Producer	220	Active	Injector			
114	Active	Injector	221	Active	Producer			
115	Active	Producer	222	Active	Injector			
116	Active	Injector	223	Active	Producer			
117	Shut-in	Producer	224	Active	Injector			
118	Shut-in	Injector	225	Active	Producer			
119	Shut-in	Producer	226	Active	Injector			
120	Active	Injector	227	Active	Producer			
121	Active	Producer	228	Active	Injector			
122	Active	Injector	229	Shut-in	Producer			
123	Active	Producer	230	Active	Producer			
124	Shut-in	Injector	231	Active	Producer			
125	Active	Producer	232	Active	Producer			
126	Active	Injector	234	Active	Injector			
127	Active	Producer	237	Shut-in	Injector			
128	Active	Producer	238	Active	Injector			
129	Shut-in	Producer	239	Active	Injector			
130	Active	Producer	241	Active	Injector			
132	Active	Injector	242	Active	Injector			
133	Active	Injector	244	Shut-in	Producer			
134	Active	Injector	245	Active	Producer			
135	Active	Injector	302	Shut-in	Producer			
136	Active	Producer	303	Active	Producer			
138	Active	Producer	401	Active	Producer			
139	Active	Producer	402	Active	Producer			
140	Active	Producer	403	Active	Producer			
141	Active	Producer	404	Active	Producer			
143	Active	Injector	405	Active	Producer			
145	Shut-in	Injector	406	Active	Producer			
146	Active	Injector	407	Active	Producer			
147	Active	Injector	408	Active	Producer			
148	Active	Producer	409	Active	Producer			
150	Active	Producer	410	Active	Producer			
151	Active	Injector	411	Active	Producer			
152	Shut-in	Producer	412	Active	Producer			
153	Active	Injector	413	Active	Producer			
154	Shut-in	Producer	414	Active	Producer			
155	Shut-in	Producer	415	Active	Producer			
201	Active	Injector	419	Active	Producer			
202	Active	Producer	420	Active	Producer			
203	Active	Injector	421	Active	Producer			

COOPER JAL UNIT

TEPI





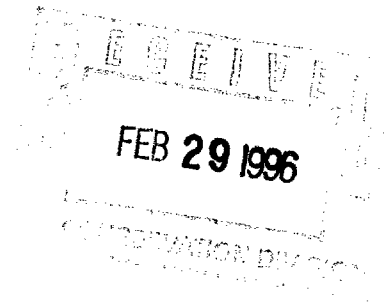


4402

3-1-96  
D- Unit letter  
Thx 127

February 26, 1996

Assistant District Manager  
Bureau of Land Management  
Roswell District Office  
1717 West Second Street  
Roswell, New Mexico 88201-2019



Commissioner of Public Lands  
P. O. Box 1148  
Santa Fe, New Mexico 87504-1148

New Mexico Oil Conservation Division  
P. O. Box 2088  
Santa Fe, New Mexico 87501

All Working Interest Owners  
(Address List Attached)

**COOPER JAL UNIT**  
Secondary Recovery Unit  
Lea County, New Mexico  
**In Reply to: 3180 (06557)**

Ladies and Gentlemen:

As operator of the Cooper Jal Unit Texaco Exploration and Production Inc. (TEPI) submits for your approval a report of 1995 operations and a plan of development and operation for the year 1996. Enclosed are a unit map, unit production curve, and well status report.

### **PAST OPERATIONS**

The Cooper Jal Unit became effective October 1, 1970. Injection into the Jalmat and Langlie Mattix Pools started in December 1970. The Unit operator converted additional wells to injection between 1971 and 1976.

Cumulative production from the Jalmat and Langlie Mattix Pools since unitization is 7.34 MMBO and 9.82 BCFG as of December 31, 1995. The average daily production was 892 BOPD, 837 MCFD, and 7,161 BWPD during December, 1995.

Bureau of Land Management,  
Commissioner of Public Lands,  
New Mexico OCD, &  
Working Interest Owners  
February 26, 1996  
Page 2

Cumulative injection into the Jalmat and Langlie Mattix Pools is 116,507,920 barrels through December 31, 1995. The average daily water injection rate during December 1995 was 13,359 barrels.

### **OPERATIONS SUMMARY FOR 1995**

Operations for the last year included the following:

- Drilled and completed six producers in the Jalmat and Langlie Mattix (commingled).
- Converted one producer to water injection.
- Performed workovers to open additional pay in two producers and to open the Jalmat zone in two Langlie Mattix injectors.
- Shut in marginally economic patterns.
- Performed wellbore cleanouts and returned shut-in wells to active service as needed to maintain efficient operations of the Unit.

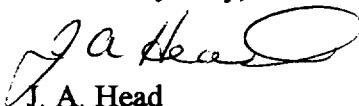
### **DEVELOPMENT PLANS FOR 1996**

In 1996, TEPI plans to continue monitoring the waterflood redevelopment initiated during 1993. Our current development plan includes the following:

- Continue to monitor performance of producers drilled in 1995. If economically warranted, drill up to three producers. No specific locations have been identified.
- Recomplete two shut-in producers in Section 18 as Jalmat gas producers.
- Open additional Jalmat pay in one producing well.
- Maintain current production through wellbore cleanout and acid stimulation of selected producers and injectors.

The current plan of development for 1996 may change through the year based on current oil prices and results from the 1993, 1994, and 1995 development.

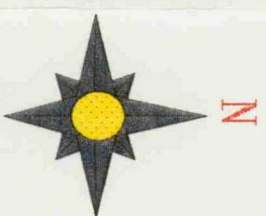
Yours very truly,



J. A. Head  
Asset Manager

CRW-NAZ  
Enclosures





LEGEND

○

SINGLE OIL PRODUCER

●

DHC OIL PRODUCER

▽

WATER INJECTOR

☀

GAS PRODUCER

⊗

SI DHC PRODUCER

▽

SI WATER INJECTOR

☀

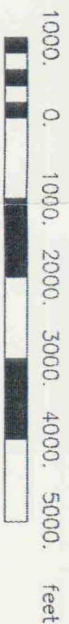
SI GAS PRODUCER

⊗

SI DUAL INJECTOR

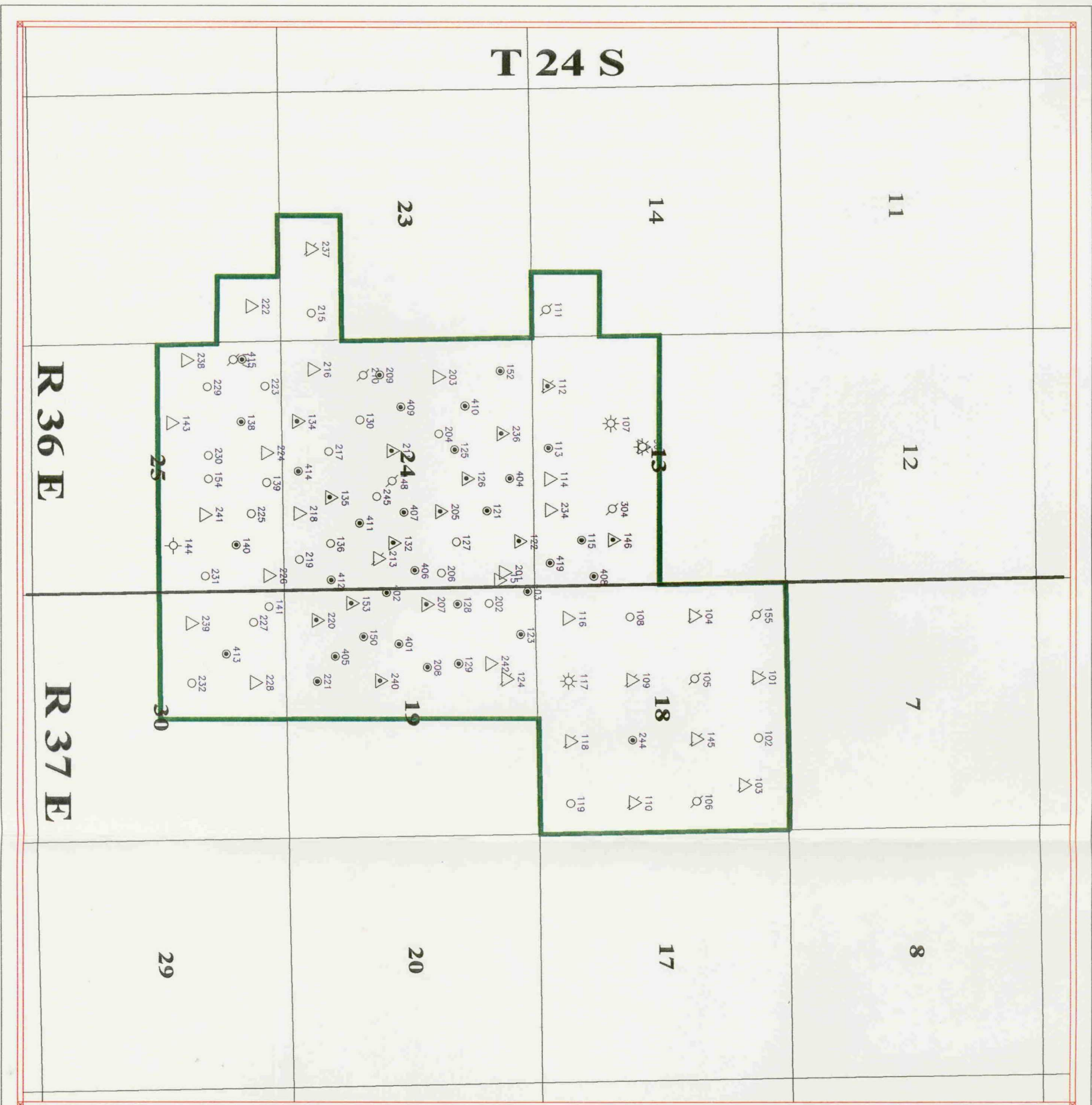
▽

DUAL INJECTOR

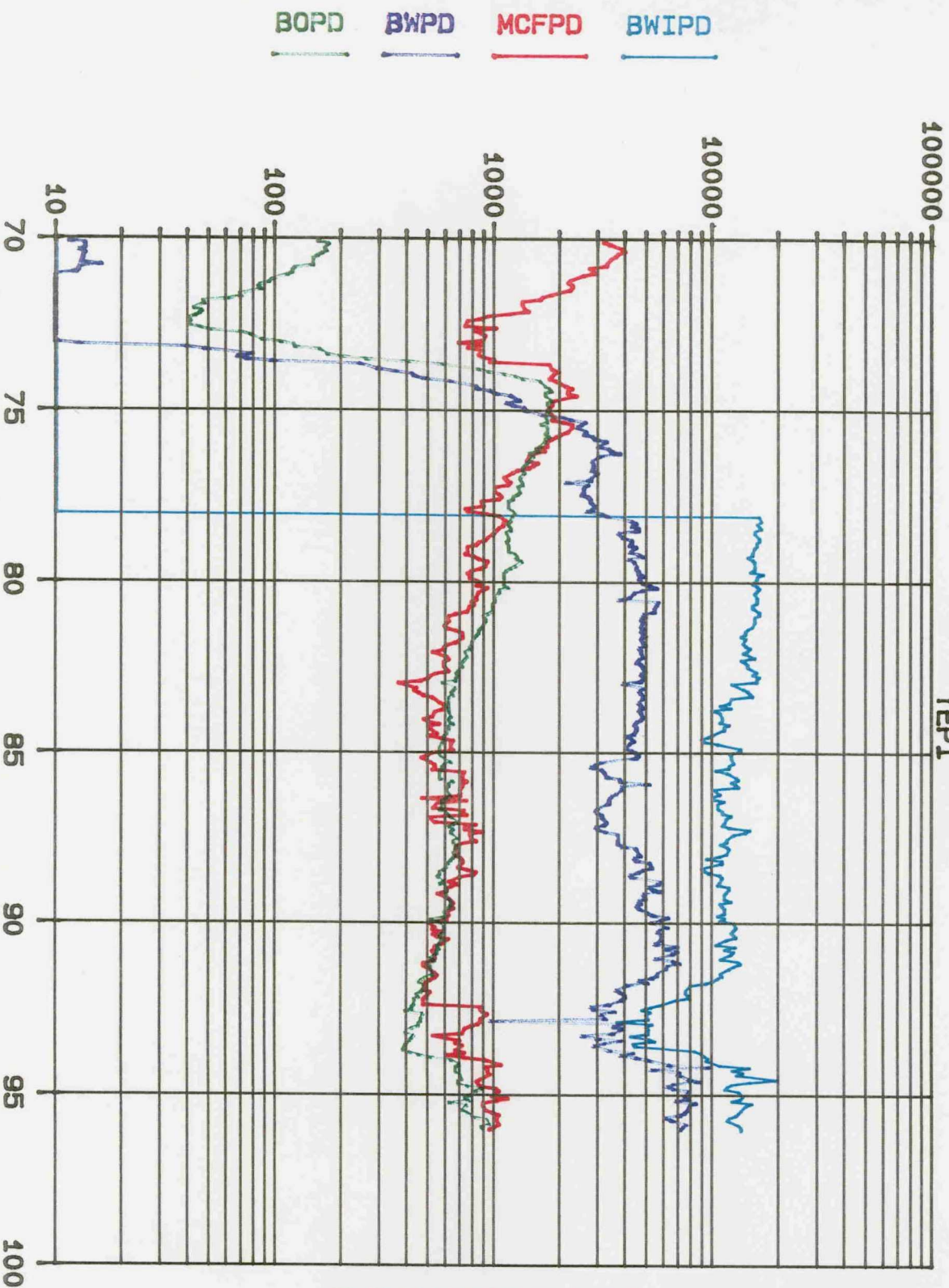


Scale 1:28436.09

TEXACO EXPLORATION AND PRODUCTION INC			
COOPER JAL UNIT			
LEA COUNTY, NEW MEXICO			
BASEMAP			
CES		2/21/96	
Scale 1:28436.09			



# COOPER JAL UNIT TEPI



YEARS

LEASE DATA  
 LSE  
 FLD 0  
 OPER TEPI  
 ZONE 0  
 ---  
 COUNTY 0  
 STATE 30  
 STATUS 12-95  
 CO 7234 MB0  
 CG 20422 MMCF  
 CM 35094 MBW  
 BOPD 898  
 BWPD 7161  
 MCYPD 953  
 WELLS 1  
 CI 79669 MBWI  
 BWIPD 13359



**COOPER JAL UNIT**  
**LEA COUNTY, NEW MEXICO**  
**WELL STATUS**  
**DECEMBER, 1995**

WELL NO.	STATUS		WELL NO.	STATUS	
101	Shut In	Injector	204	Active	Producer
102	Active	Producer	205	Active	Injector
103	Shut In	Injector	206	Active	Producer
104	Shut In	Injector	207	Active	Injector
105	Shut In	Producer	208	Active	Producer
106	Shut In	Producer	209	Active	Producer
107	Active	Producer	210	Shut In	Producer
108	Active	Producer	211	Active	Injector
109	Shut In	Injector	213	Plugged & Abandoned	
110	Shut In	Injector	215	Active	Producer
111	Shut In	Producer	216	Active	Injector
112	Shut In	Injector	217	Active	Producer
113	Active	Producer	218	Active	Injector
114	Active	Injector	219	Active	Producer
115	Active	Producer	220	Active	Injector
116	Active	Injector	221	Active	Producer
117	Active	Producer	222	Active	Injector
118	Shut In	Injector	223	Active	Producer
119	Active	Producer	224	Active	Injector
120	Active	Injector	225	Active	Producer
121	Active	Producer	226	Active	Injector
122	Active	Injector	227	Active	Producer
123	Active	Producer	228	Active	Injector
124	Shut In	Injector	229	Active	Producer
125	Active	Producer	230	Active	Producer
126	Active	Injector	231	Active	Producer
127	Active	Producer	232	Active	Producer
128	Active	Producer	234	Active	Injector
129	Active	Producer	236	Active	Injector
130	Active	Producer	237	Shut-in	Injector
132	Active	Injector	238	Active	Injector
133	Active	Injector	239	Active	Injector
134	Active	Injector	240	Active	Injector
135	Active	Injector	241	Active	Injector
136	Active	Producer	242	Active	Injector
137	Plugged & Abandoned		244	Active	Producer
138	Active	Producer	245	Active	Producer
139	Active	Producer	302	Shut In	Producer
140	Active	Producer	303	Active	Producer
141	Active	Producer	304	Plugged & Abandoned	
143	Active	Injector	401	Active	Producer
144	Plugged & Abandoned		402	Active	Producer
145	Shut In	Injector	403	Active	Producer
146	Active	Injector	404	Active	Producer
147	Active	Injector	405	Active	Producer
148	Shut In	Producer	406	Active	Producer
150	Active	Producer	407	Active	Producer
151	Shut In	Injector	408	Active	Producer
152	Shut In	Producer	409	Active	Producer
153	Active	Injector	410	Active	Producer
154	Active	Producer	411	Active	Producer
155	Shut In	Producer	412	Active	Producer
201	Active	Injector	413	Active	Producer
202	Active	Producer	414	Active	Producer
203	Active	Injector	415	Active	Producer
			419	Active	Producer

**COOPER JAL UNIT**  
**LEA COUNTY, NEW MEXICO**

ARCO Permian  
A Unit of Atlantic Richfield Company  
P. O. Box 1610  
Midland, TX 79702

George Bauerdorf Estate  
9363 Wilshire Boulevard, Suite 211  
Beverly Hills, CA 90210

Emilie S. Blaine  
715 Forest Trace  
Rockwall, TX 75087

James A. Davidson  
P. O. Box 494  
Midland, TX 79702

Exxon Company, USA  
Joint Interest Group  
P. O. Box 4707  
Houston, TX 77210-4707

Doyle Hartman  
P. O. Box 10426  
Midland, TX 79702

Robert Kruse  
P. O. Box 327  
Key West, FL 33040

Kathleen V. Lind  
18 Harmony Drive  
Oroville, CA 95966

McBride Oil & Gas Corp.  
P. O. Box 1515  
Roswell, NM 88202

Larry A. Nermyr  
HC-57, Box 4106  
Sidney, MT 59270

Parker & Parsley Development Co.  
P. O. Box 3178  
Midland, TX 79702

Mark Shidler Inc.  
911 Walker, Suite 565  
Houston, TX 77002

Adele I. Sowell Estate  
10721 45th Avenue S.E.  
Everett, WA 98208

Sunwest Bank of Albuquerque  
Trustee of the T. J. and  
Mary Ray Sivley Trust  
P. O. Box 26900  
Albuquerque, NM 87125-6900



#4402

JK

CONCERN DIVISION  
REC-100  
FEB 16 1995

D-unit letter  
Tha Ry

February 15, 1995

Assistant District Manager  
Bureau of Land Management  
Roswell District Office  
1717 West Second Street  
Roswell, New Mexico 88201-2019

Commissioner of Public Lands  
P. O. Box 1148  
Santa Fe, New Mexico 87504-1148

New Mexico Oil Conservation Division  
P. O. Box 2088  
Santa Fe, New Mexico 87501

All Working Interest Owners  
(Address List Attached)

**COOPER JAL UNIT**  
Secondary Recovery Unit  
Lea County, New Mexico  
**In Reply to: 3180 (06557)**

Ladies and Gentlemen:

As operator of the Cooper Jal Unit Texaco Exploration and Production Inc. (TEPI) submits for your approval a report of 1994 operations and a plan of development and operation for the year 1995. Enclosed are unit maps, a unit production curve, and a well status report.

**PAST OPERATIONS**

The Cooper Jal Unit became effective October 1, 1970. Injection into the Jalmat and Langlie Mattix Pools started in December 1970. The Unit operator converted additional wells to injection between 1971 and 1976.

Cumulative production from the Jalmat and Langlie Mattix Pools since unitization is 7.05 MMBO and 9.50 BCFG as of December 31, 1994. The average daily production was 783 BOPD, 985 MCFD, and 7,582 BWPD during December, 1994.

Bureau of Land Management,  
Commissioner of Public Lands,  
New Mexico OCD, &  
Working Interest Owners  
February 15, 1995  
Page 2

Cumulative injection into the Jalmat and Langlie Mattix Pools is 111,868,783 barrels through December 31, 1994. The average daily water injection rate during December 1994 was 13,805 barrels.

#### **OPERATIONS SUMMARY FOR 1994**

Operations for the last year included the following:

- Drilled and completed five producers in the Jalmat and Langlie Mattix (commingled).
- Converted two producers to water injection.
- Initiated workovers to recomplete two wells as Jalmat producers. Workovers were discontinued when bad casing was found in each well.
- Recompleted one producer uphole as a Jalmat gas producer.
- Performed wellbore cleanouts and returned shut-in wells to active service as needed to maintain efficient operations of the Unit.

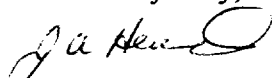
#### **DEVELOPMENT PLANS FOR 1995**

In 1995, TEPI plans to continue the waterflood redevelopment initiated during 1993. Our current development plan includes the following:

- Drill six 20-acre producing wells.
- Convert one well to water injection.
- Open additional pay in two producing wells and three injection wells.
- Maintain current production through wellbore cleanout and acid stimulation of selected producers and injectors.

The current plan of development for 1995 may change through the year based on current oil prices and results from the 1993 and 1994 development.

Yours very truly,



J. A. Head  
Asset Manager

CRW-NAZ  
Enclosures

**COOPER JAL UNIT**  
**LEA COUNTY, NEW MEXICO**

Amerada Hess Corp.  
Attn: Mr R. W. Mullins  
P. O. Box 2040  
Tulsa, OK 74102

ARCO Oil & Gas Company  
JIO - Rm. 477-23 MIO  
P. O. Box 1610  
Midland, TX 79702

George Bauerdorf Estate  
9363 Wilshire Boulevard, Suite 211  
Beverly Hills, CA 90210

Emilie S. Blaine  
715 Forest Trace  
Rockwall, TX 75087

James A. Davidson  
P. O. Box 494  
Midland, TX 79702

Exxon Company, USA  
Joint Interest Group ML #38  
P. O. Box 1700  
Midland, TX 79702

Doyle Hartman  
P. O. Box 10426  
Midland, TX 79702

Robert Kruse  
P. O. Box 327  
Key West, FL 33040

Kathleen V. Lind  
18 Harmony Drive  
Oroville, CA 95966

McBride Oil & Gas Corp.  
P. O. Box 1515  
Roswell, NM 88202

Meridian Oil, Inc.  
P. O. Box 51810  
Midland, TX 79710

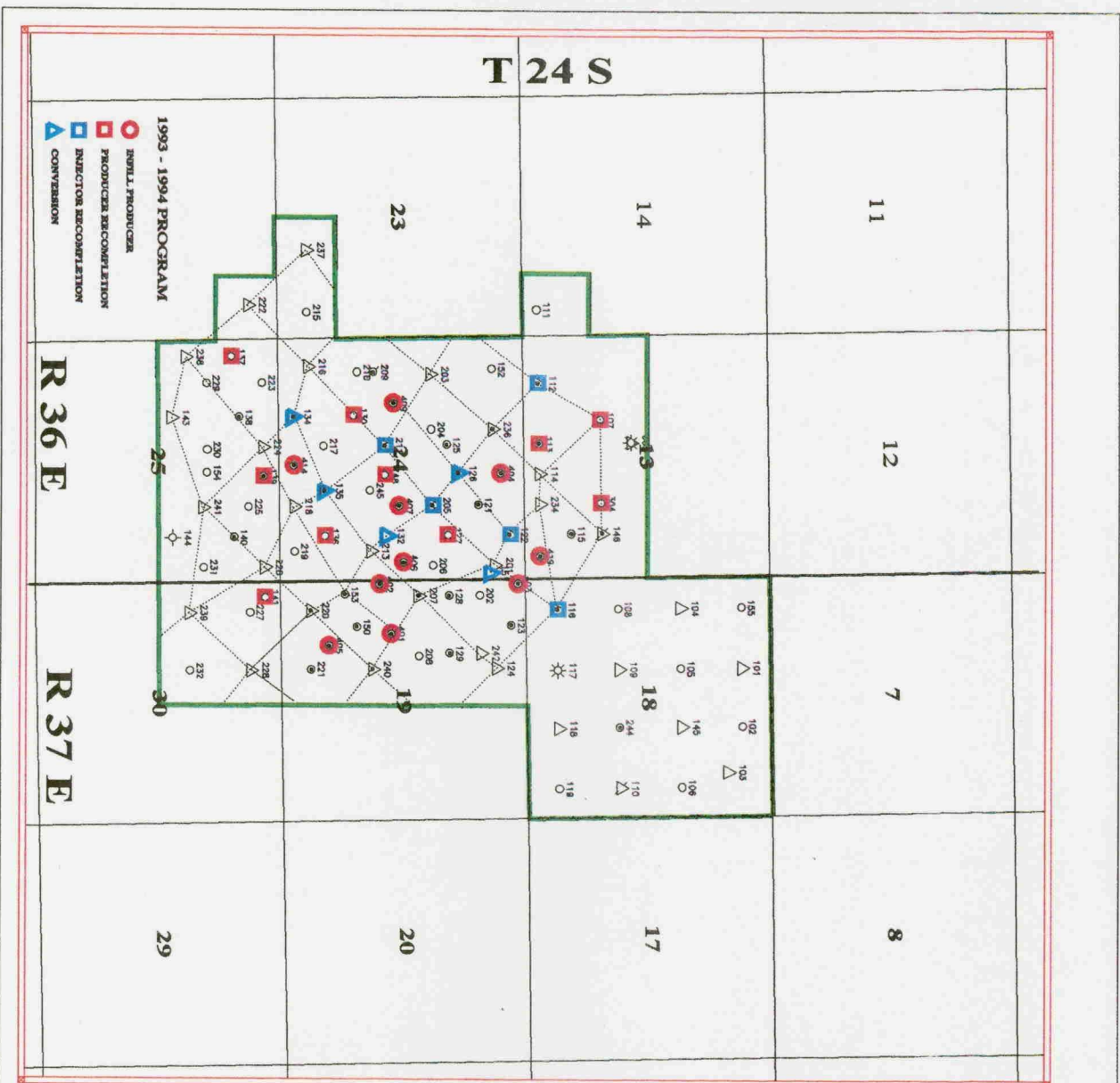
Larry A. Nermyr  
HC-57, Box 4106  
Sidney, MT 59270

Parker & Parsley Development Co.  
P. O. Box 3178  
Midland, TX 79702

Mark Shidler Inc.  
911 Walker, Suite 565  
Houston, TX 77002

Adele I. Sowell Estate  
10721 45th Avenue S.E.  
Everett, WA 98208

Sunwest Bank of Albuquerque  
Trustee of the T. J. and Mary Ray  
Sivley Trust  
P. O. Box 26900  
Albuquerque, NM 87125-6900



1993 - 1994 PROGRAM

○ INITIAL PRODUCER

◐ PRODUCER RECOMPLETION

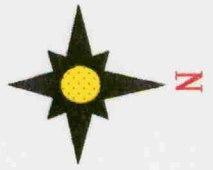
◑ INJECTOR RECOMPLETION

△ CONVERSION

R 36 E

R 37 E

T 24 S

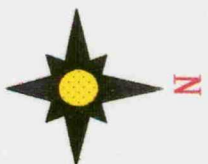
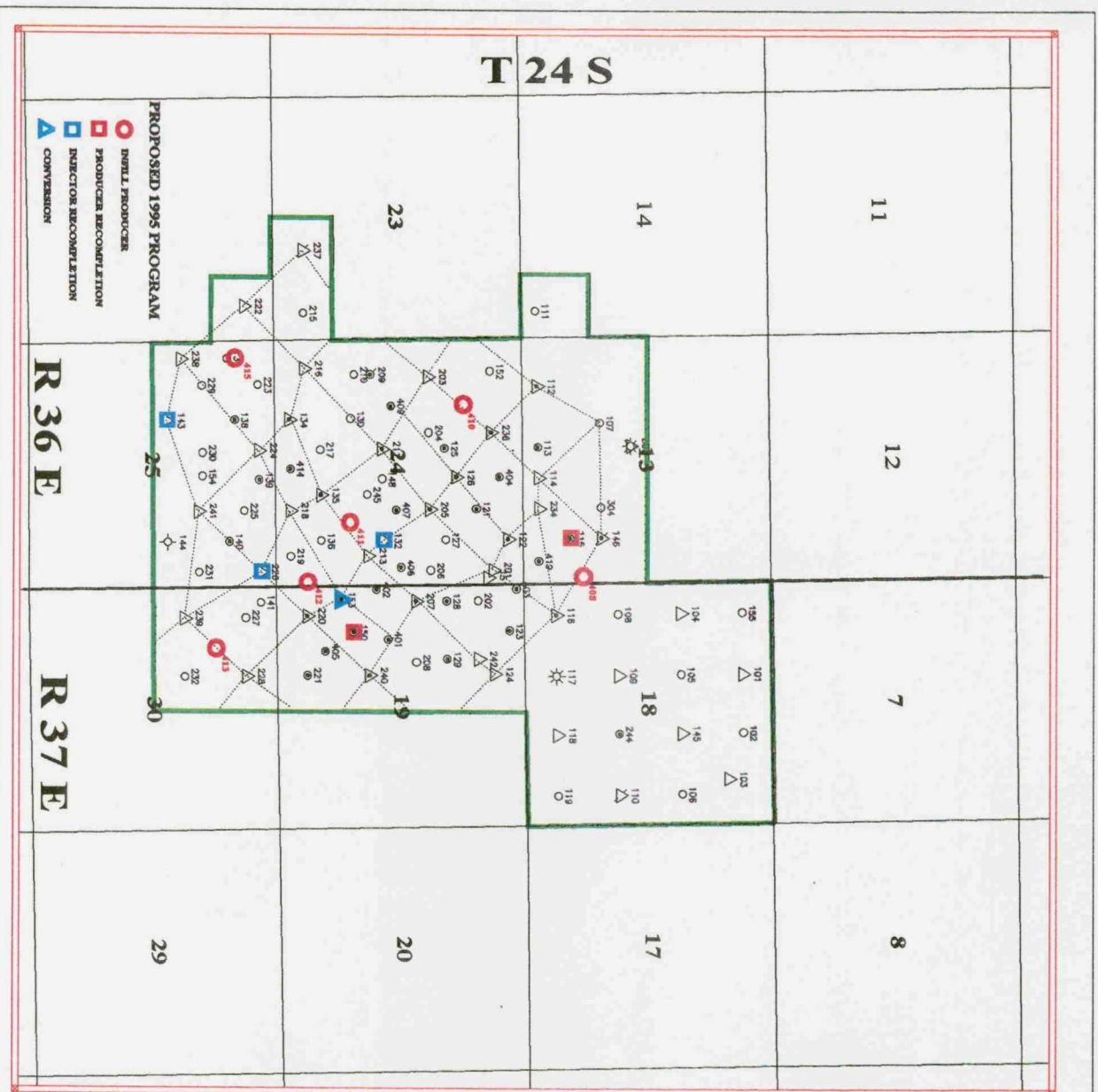


- LEGEND
- SINGLE OIL PRODUCER
  - ◐ DHC OIL PRODUCER
  - △ WATER INJECTOR
  - ☆ GAS PRODUCER
  - ◑ SI DHC PRODUCER
  - ◐ SI WATER INJECTOR
  - ☆ SI GAS PRODUCER
  - ◑ SI DUAL INJECTOR
  - △ DUAL INJECTOR

Scale 1:44703.52



TEXACO EXPLORATION AND PRODUCTION INC.		
COOPER JAL UNIT		
LEA COUNTY, NEW MEXICO		
REDEVELOPMENT PROGRAM		
CDS	Scale 1:44703.52	2/7/95



- LEGEND**
- SINGLE OIL PRODUCER
  - DHC OIL PRODUCER
  - △ WATER INJECTOR
  - ⊙ GAS PRODUCER
  - ⊙ SI DHC PRODUCER
  - ⊙ SI WATER INJECTOR
  - ⊙ SI GAS PRODUCER
  - ⊙ SI DUAL INJECTOR
  - ⊙ DUAL INJECTOR

Scale 1:43946.68

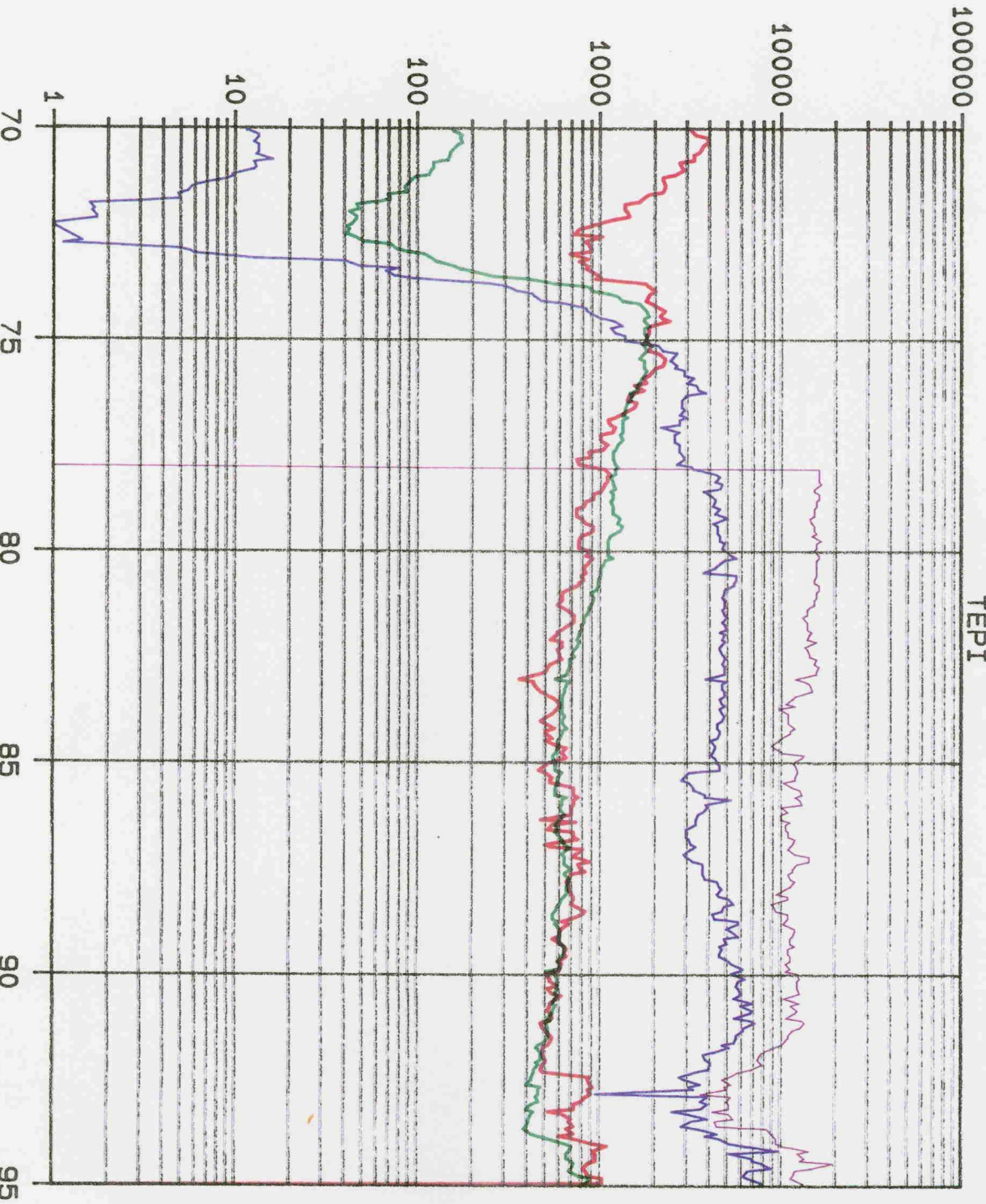


TEXACO EXPLORATION AND PRODUCTION INC		
COOPER JAL UNIT		
LEA COUNTY, NEW MEXICO		
REDEVELOPMENT PROGRAM		
QCS	Scale 1:43946.68	2/7/95



# COOPER JAL UNIT

TEPI



BOPD BWPD MCFPD BWIPD

YEARS

LEASE DATA  
 LSE  
 FLD 0  
 OPER TEPI  
 ZONE 0  
 --  
 COUNTY 0  
 STATE 30

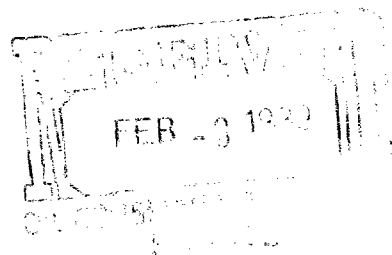


COOPER JAL UNIT  
LEA COUNTY, NEW MEXICO  
WELL STATUS  
DECEMBER, 1994

WELL NO.	STATUS		WELL NO.	STATUS	
101	Active	Injector	204	Active	Producer
102	Active	Producer	205	Active	Injector
103	Active	Injector	206	Active	Producer
104	Active	Injector	207	Active	Injector
105	Active	Producer	208	Active	Producer
106	Active	Producer	209	Active	Producer
107	Active	Producer	210	Active	Producer
108	Active	Producer	211	Active	Injector
109	Active	Injector	213	Shut-in	Injector
110	Shut In	Injector	215	Active	Producer
111	Active	Producer	216	Active	Injector
112	Active	Injector	217	Active	Producer
113	Active	Producer	218	Active	Injector
114	Active	Injector	219	Active	Producer
115	Active	Producer	220	Active	Injector
116	Active	Injector	221	Active	Producer
117	Active	Producer	222	Active	Injector
118	Active	Injector	223	Active	Producer
119	Active	Producer	224	Active	Injector
121	Active	Producer	225	Active	Producer
122	Active	Injector	226	Active	Injector
123	Active	Producer	227	Active	Producer
124	Active	Injector	228	Active	Injector
125	Active	Producer	229	Active	Producer
126	Active	Injector	230	Active	Producer
127	Active	Producer	231	Active	Producer
128	Active	Producer	232	Active	Producer
129	Active	Producer	234	Active	Injector
130	Active	Producer	235	Active	Injector
132	Active	Injector	236	Active	Injector
134	Active	Injector	237	Shut-in	Injector
135	Active	Injector	238	Active	Injector
136	Active	Producer	239	Active	Injector
137	Shut-in	Producer	240	Active	Injector
138	Active	Producer	241	Active	Injector
139	Active	Producer	242	Active	Injector
140	Active	Producer	244	Active	Producer
141	Active	Producer	245	Active	Producer
143	Active	Injector	303	Shut-in	Producer
144	Plugged & Abandoned		304	Shut-in	Producer
145	Active	Injector	401	Active	Producer
146	Shut-in	Injector	402	Active	Producer
147	Active	Injector	403	Active	Producer
148	Active	Producer	404	Active	Producer
150	Active	Producer	405	Active	Producer
151	Active	Injector	406	Active	Producer
152	Active	Producer	407	Active	Producer
153	Active	Producer	409	Active	Producer
154	Active	Producer	414	Active	Producer
155	Active	Producer	419	Active	Producer
201	Active	Injector			
202	Active	Producer			
203	Active	Injector			



January 11, 1989



District Supervisor  
Bureau of Land Management  
Roswell District Office  
P. O. Box 1397  
Roswell, New Mexico 88201

New Mexico Oil Conservation Division  
P. O. Box 2088  
Santa Fe, New Mexico 87501

All Working Interest Owners  
(Address List Attached)

RE: COOPER JAL UNIT  
SECONDARY RECOVERY UNIT  
LEA COUNTY, NEW MEXICO

#4402

Gentlemen:

In accordance with Section II of the Unit Agreement of the Development and Operation of the Cooper Jal Unit, Lea County, New Mexico, Texaco Inc. respectfully submits for your approval a report of past operations and a plan of development and operation for the waterflood unit for the year 1989.

PAST OPERATIONS

The Cooper Jal Unit became effective October 1, 1970. Injection started in November, 1971, into the combined Jalmat and Langlie Mattix Pools. Additional wells were converted between 1971 and 1976. By November, 1976, there were 23 Jalmat injectors and 25 Langlie Mattix injectors.

Cumulative oil production from the Jalmat and Langlie Mattix Pools since unitization was 5,589,550 barrels as of October 31, 1988. The average daily oil producing rate during October, 1988, was 677 barrels from 45 producers.

Bureau of Land Management,  
New Mexico Oil Conservation  
Division, and Working  
Interest Owners

- 2 -

January 11, 1989

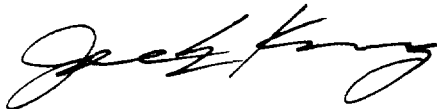
Cumulative injection into the Jalmat and Langlie Mattix Pools since unitization was 84,911,800 barrels as of October 31, 1988. The average daily injection rate during October, 1988, was 10,986 barrels at 950 psig.

During 1986 and 1987, six (6) producing wells were downhole commingled between the Jalmat and the Langlie Mattix zones. Other workovers included cleanouts, stimulation, perforating additional pay, and the repair of casing leaks.

DEVELOPMENT PLANS 1989

Plans for 1989 are to monitor the waterflood for effective and efficient operations.

Yours very truly,

A handwritten signature in cursive script, appearing to read "Jack King".

PWS:jss

Attachments

COOPER JAL UNIT  
WORKING INTEREST OWNERS

Exxon Company, USA  
Joint Interest Manager  
P. O. Box 1700  
Midland, Texas 79702-1700

George Bauerdorf Estate  
9363 Wilshire Boulevard  
Suite 211  
Beverly Hills, CA 90210

Mr. T. J. Sivley  
Drawer GG  
Artesia, New Mexico 88210

Conoco, Inc.  
P. O. Box 460  
Hobbs, New Mexico 88240

Mrs. Adele Irvine Sowell  
4738 Hallmark  
Dallas, Texas 75229

Damson Oil Corporation  
P. O. Box 4391  
Houston, Texas 77210

Doyle Hartman  
P. O. Box 10426  
Midland, Texas 79702

Amerada Hess Corporation  
Attn: Mr. R. W. Mullins  
P. O. Box 2040  
Tulsa, Oklahoma 74102

Kathleen Lind, Successor  
to Alic Bunch Estate  
18 Harmony Drive  
Oroville, CA 95966

ARCO Oil & Gas Company  
Joint Interest Operations  
P. O. Box 1610  
Midland, Texas 79702

OXY USA Inc.  
Attn: Joint Interest  
P. O. Box 50250  
Midland, Texas 79710

Graham Royalty, Ltd.  
5429 LBJ Freeway  
Suite 550  
Dallas, Texas 75240

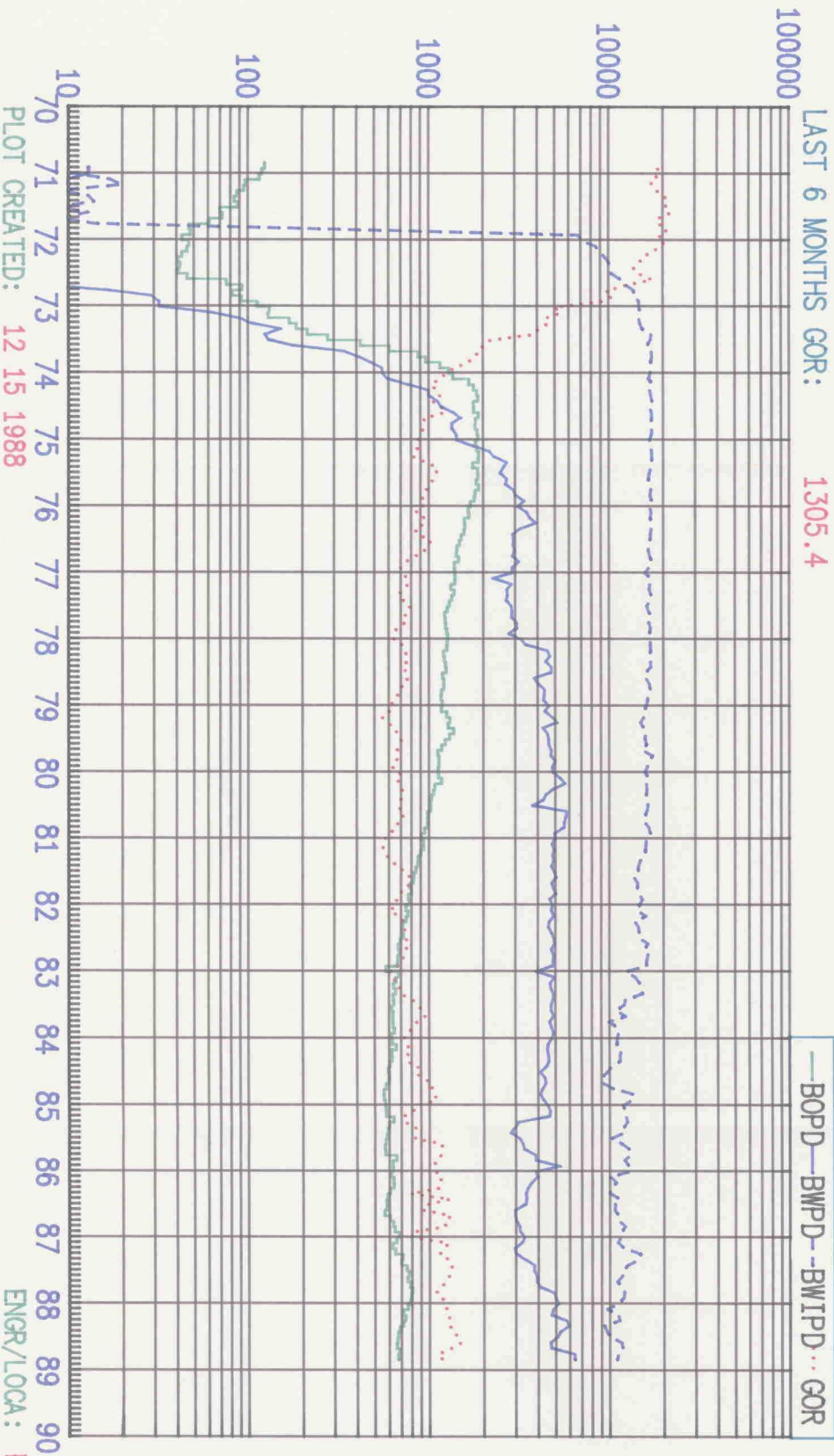
Kathleen Lind, Executrix  
Ira Wade Lind Estate  
18 Harmony Drive  
Oroville, CA 95966

Mr. John L. Harlan  
729 Lakeway Drive  
El Paso, Texas 79932-3120

McBride Oil & GAS CORP.  
P. O. BOX 1515  
Roswell, New Mexico 88202

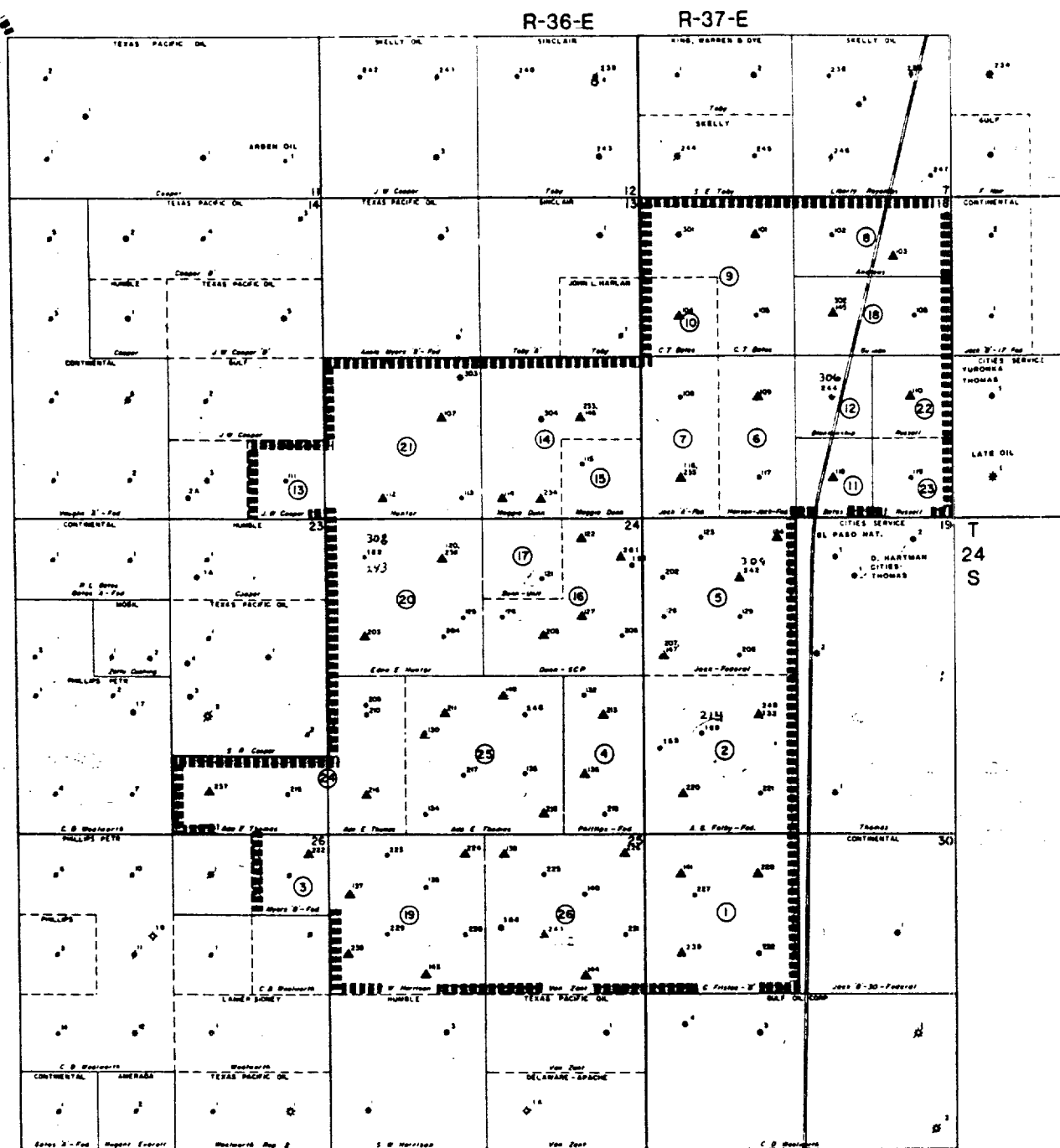
PROPERTY NAME: COOPER JAL UNIT  
FIELD NAME: LANGLEIE MATTIX AND JALMAT  
OPERATOR NAME: TEXACO INC.  
PRODUCING WELLS: 45

LAST 6 MONTHS GOR: 1305.4



PLOT CREATED: 12 15 1988

ENGR/LOCA: PWS / DST



# LEGEND

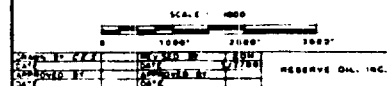
- UNIT BOUNDARY
- TRACT NUMBER
- INJECTION WELL
- 100 LAMBLE MATIX ZONE
- 200 JALMAT OIL ZONE
- 300 JALMAT GAS ZONE

TEXACO

COOPER JAL UNIT

JALMAT AND LAMBLE MATIX FIELDS

LEA COUNTY, NEW MEXICO





RECEIVED  
FEB 16 1994  
SANTA FE, NM 87501

4402

February 16, 1994

Assistant District Manager  
Bureau of Land Management  
Roswell District Office  
1717 West Second Street  
Roswell, New Mexico 88201-2019

*D- unit letters  
Tha  
ok'd 2-24-94*

Commissioner of Public Lands  
P. O. Box 1148  
Santa Fe, New Mexico 87504-1148

New Mexico Oil Conservation Division  
P. O. Box 2088  
Santa Fe, New Mexico 87501

All Working Interest Owners  
(Address List Attached)

**COOPER JAL UNIT**  
Secondary Recovery Unit  
Lea County, New Mexico  
**In Reply To: 14-08-0001-11584**  
**3180 (065)**

Ladies and Gentlemen:

As operator of the Cooper Jal Unit Texaco Exploration and Production Inc. [TEPI] submits for your approval a report of 1993 operations and a plan of development and operation for the year 1994. Enclosed are a unit map, unit production curve, and a well status report.

### **PAST OPERATIONS**

The Cooper Jal Unit became effective October 1, 1970. Injection into the Jalmat and Langlie Mattix Pools started in December 1970. The Unit operator converted additional wells to injection between 1971 and 1976.

Cumulative production from the Jalmat and Langlie Mattix Pools since unitization is 6.78 MMBO and 9.15 BCFG as of November 30, 1993. The average daily production was 612 BOPD, 736 MCFD, and 4,990 BWPD during November 1993.

Bureau of Land Management,  
Commissioner of Public Lands,  
New Mexico OCD, &  
Working Interest Owners  
February 16, 1994  
Page 2

Cumulative injection into the Jalmat and Langlie Mattix Pools is 101,794,000 barrels through November 30, 1993. The average daily water injection rate during November 1993 was 9,582 barrels.

### **OPERATIONS SUMMARY FOR 1993**

Operations for the last year included the following:

- Replaced the injection distribution system.
- Drilled and completed five producers in the Jalmat and Langlie Mattix. [commingled].
- Converted three producers to water injection.
- Recompleted six injectors uphole as Jalmat producers.
- Deepened three injectors.
- Recompleted one producer uphole as a Jalmat producer.
- Performed wellbore cleanouts and returned shut-in wells to active service as needed to maintain efficient operations of the Unit.

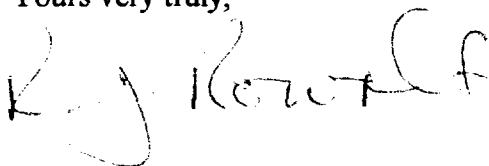
### **DEVELOPMENT PLANS FOR 1994**

In 1994, TEPI plans to continue the waterflood redevelopment initiated during 1993. Our current development plan includes the following:

- Drill five 20-acre producing wells.
- Convert two wells to water injection. Return four shut-in injectors to active service.
- Return one shut-in gas well to active service.
- Maintain current production through wellbore cleanout and acid stimulation of selected producers and injectors.

The current plan of development for 1994 may change through the year based on current oil prices and results from the 1993 development.

Yours very truly,



R. J. Rowalt  
Assistant Division Manager

JHO/srt  
Attachments



COOPER JAL UNIT  
LEA COUNTY, NEW MEXICO  
WORKING INTEREST OWNERS

Exxon Company, USA  
Joint Int. Group ML #38  
P. O. Box 1700  
Midland, TX. 79702

George Bauerdorf Estate  
Suite 211  
9363 Wilshire Boulevard  
Beverly Hills, CA. 90210

Mark Shidler Inc.  
911 Walker, Suite 565  
Houston, TX. 77002

Adele I. Sowell Estate  
10721 45th Avenue S.E.  
Everett, WA. 98208

McBride Oil & Gas Corp.  
P. O. Box 1515  
Roswell, N.M. 88202

Emilie S. Blaine  
715 Forest Trace  
Rockwall, TX. 75087

ARCO Oil & Gas Company  
Jt. Interest Operations  
Rm. 477-23 MIO  
P. O. Box 1610  
Midland, TX. 79702

Robert Kruse  
P. O. Box 327  
Key West, FL. 33040

Mr. T. J. Sivley  
Drawer GG  
Artesia, N.M. 88210

Doyle Hartman  
P. O. Box 10426  
Midland, TX. 79702

Amerada Hess Corp.  
Attn: R. W. Mullins  
P. O. Box 2040  
Tulsa, OK. 74102

James A. Davidson  
P. O. Box 494  
Midland, TX. 79702

Kathleen V. Lind  
18 Harmony Drive  
Oroville, CA. 95966

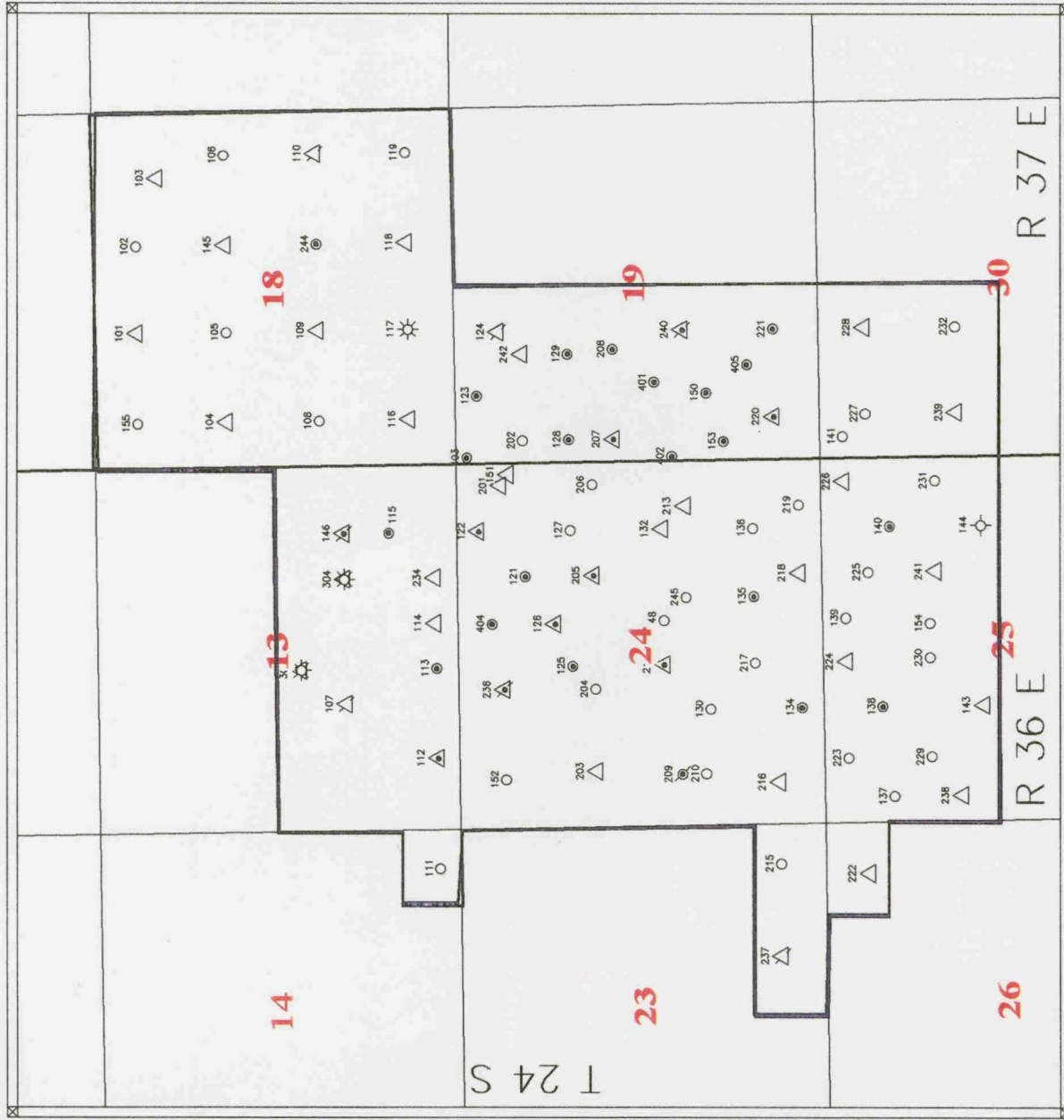
Meridian Oil, Inc.  
P. O. Box 51810  
Midland, TX. 79710

Parker & Parsley  
Development Co.  
P. O. Box 3178  
Midland, TX. 79702

Larry A. Nermyr  
HC-57, Box 4106  
Sidney, MT. 59270



- LEGEND
- SINGLE OIL PROD
  - COMM. OIL PROD
  - △ WATER INJECTOR
  - ✱ GAS PRODUCER
  - ✱ SI COMM. PROD
  - △ SI WATER INJECTOR
  - ✱ SI GAS PROD
  - △ SI DUAL INJECTOR
  - △ DUAL INJECTOR



TEXACO EXPLORATION AND PRODUCTION INC

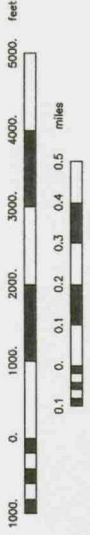
COOPER JAL UNIT  
LEA COUNTY, NEW MEXICO

J. H. Ollms

Scale 1:30000.

2/1/84

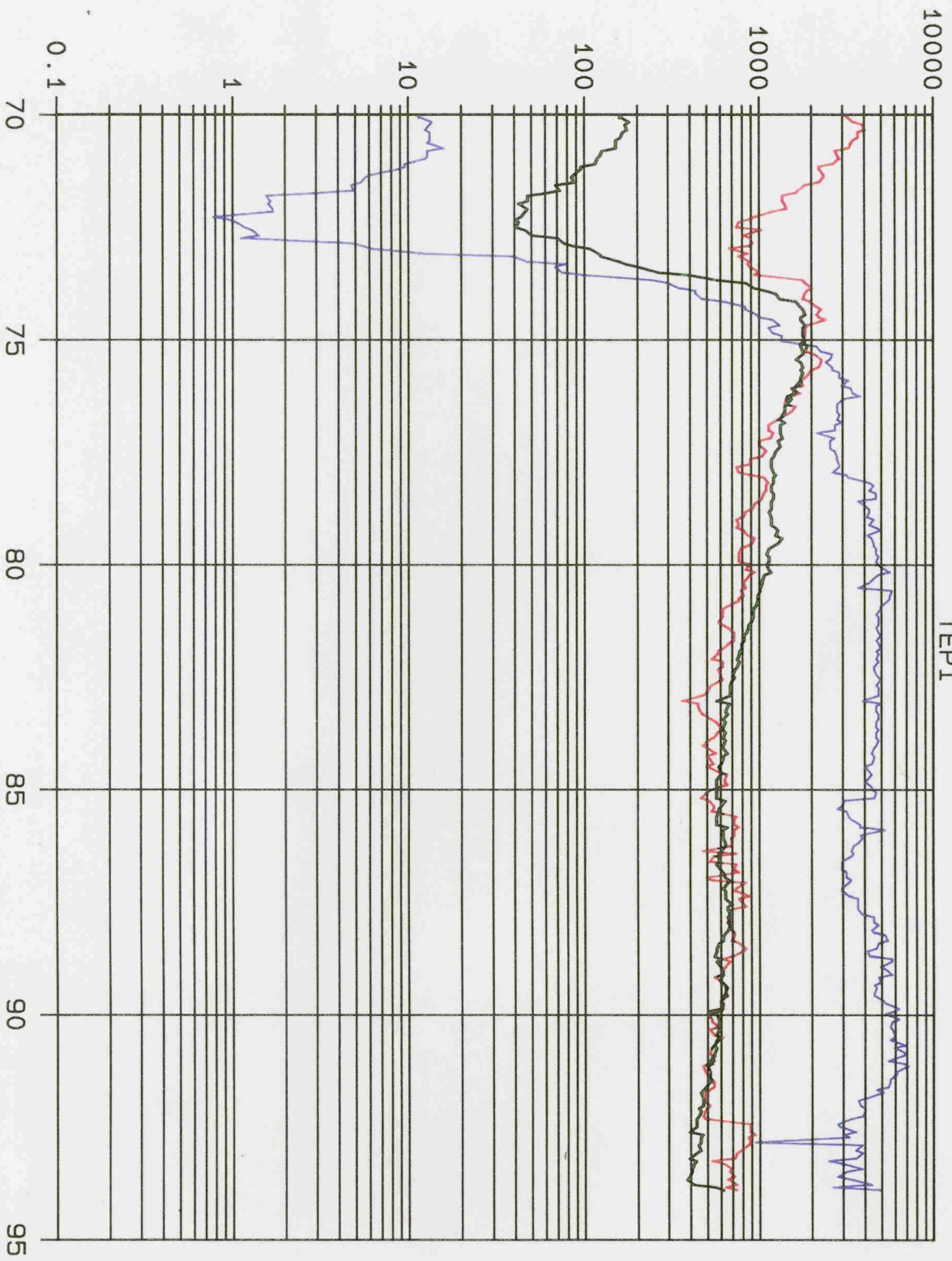
Scale 1:30000.



COOPER JAL UNIT

TEPI

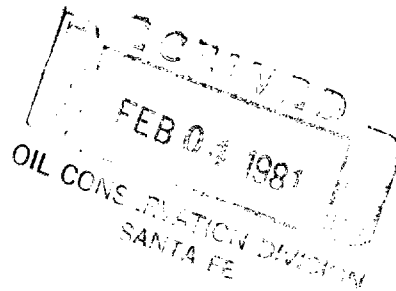
BOPD      BWPD      MCFPD



YEARS

**COOPER JAL UNIT  
LEA COUNTY, NEW MEXICO  
WELL STATUS  
DECEMBER, 1993**

WELL NO.	STATUS		WELL NO.	STATUS	
101	Active	Injector	201	Active	Injector
102	Active	Producer	202	Active	Producer
103	Active	Injector	203	Active	Injector
104	Active	Injector	204	Active	Producer
105	Active	Producer	205	Active	Injector
106	Active	Producer	206	Active	Producer
107	Shut-in	Injector	207	Active	Injector
108	Active	Producer	208	Active	Producer
109	Active	Injector	209	Active	Producer
110	Active	Injector	210	Active	Producer
111	Active	Producer	211	Active	Injector
112	Active	Injector	213	Active	Injector
113	Active	Producer	215	Active	Producer
114	Active	Injector	216	Active	Injector
115	Active	Producer	217	Active	Producer
116	Active	Injector	218	Active	Injector
117	Active	Producer	219	Active	Producer
118	Active	Injector	220	Active	Injector
119	Active	Injector	221	Active	Producer
120	Shut-in	Producer	222	Active	Injector
121	Active	Producer	223	Active	Producer
122	Active	Injector	224	Active	Injector
123	Active	Producer	225	Active	Producer
124	Shut-in	Injector	226	Active	Injector
125	Active	Producer	227	Active	Producer
126	Active	Injector	228	Active	Injector
127	Active	Producer	229	Active	Producer
128	Active	Producer	230	Active	Producer
129	Active	Producer	231	Active	Producer
130	Active	Producer	232	Active	Producer
132	Active	Injector	233	Shut-in	Injector
133	Shut-in	Inejctor	234	Active	Injector
134	Active	Producer	235	Active	Injector
135	Active	Producer	236	Shut-in	Injector
136	Active	Producer	237	Shut-in	Injector
137	Shut-in	Producer	238	Active	Injector
138	Active	Producer	239	Active	Injector
139	Active	Producer	240	Shut-in	Injector
140	Active	Producer	241	Active	Injector
141	Active	Producer	242	Active	Injector
143	Active	Injector	244	Active	Producer
144	Plugged & Abandoned		245	Active	Producer
145	Active	Injector	303	Shut-in	Producer
146	Shut-in	Injector	304	Shut-in	Producer
147	Shut-in	Injector	401	Active	Producer
148	Active	Producer	402	Active	Producer
150	Active	Producer	403	Active	Producer
151	Active	Injector	404	Active	Producer
152	Active	Producer	405	Active	Producer
153	Active	Producer			
154	Active	Producer			
155	Active	Producer			



Getty Oil Company

Central Exploration and Production Division  
P. O. Box 730  
Hobbs, New Mexico 88240

January 29, 1981

File: Cooper Jal Unit  
Lea County, New Mexico

4412

Director (3)  
United States Geological Survey  
P. O. Drawer 1857  
Roswell, New Mexico

Commissioner of Public Lands (3)  
The State of New Mexico  
Capitol Annex Building  
Santa Fe, New Mexico 87501

Oil Conservation Division (3)  
of the State of New Mexico  
Capitol Annex Building  
Santa Fe, New Mexico

OK  
S/H 2/6/81

Gentlemen:

Getty Oil Company respectfully submits for your approval a report of past operations and a plan of development for the year 1981 on the Cooper Jal Unit.

#### Past Operations

The Cooper Jal Unit became effective October 1, 1970. Injection started in November, 1971 into the combined Jalmat and Langlie Mattix Pools. Additional wells were converted between 1971 and 1976 so that the count of injectors in the Jalmat as of November 1, 1976 was 23, and in the Langlie Mattix as of November 1, 1976, 25.

Cumulative oil production from the Jalmat since unitization was 1,750,834 barrels on January 1, 1981. The average daily producing rate during December, 1980 was 521 barrels of oil from 21 producers.

Cumulative oil production from the Langlie Mattix Pool was 2,116,875 barrels on January 1, 1981. The average daily producing rate during December, 1980 was 392 barrels of oil from 28 producers.

Cumulative injection into the Jalmat since unitization was 25,021,465 barrels of water on January 1, 1981. The average daily injection rate during December, 1980 was 7,967 barrels at 872 psig.

Cumulative injection into the Langlie Mattix since unitization was 28,230,383 barrels water on January 1, 1981. The average daily injection rate during December, 1980 was 8,122 barrels at 932 psig.

The unit was operated by Reserve Oil and Gas Company from the date of unitization until this past year, when Reserve Oil and Gas Company was merged into Getty Oil Company.

Cooper Jal Unit  
Lea County, New Mexico  
January 29, 1981  
Page Two (2)

## Development Plans for 1981

Plans for the unit are to perform remedial and stimulation workovers on wells as they are warranted for efficient oil recovery. Several tubing string will probably be replaced, as scale and corrosion appears to be the major operational problem facing the unit.

Injection profiles will be conducted on a few of the injectors as warranted to aid in improving injection profiles and maintaining efficient waterflooding.

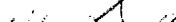
Very truly yours,

GETTY OIL COMPANY

Dale R. Crockett  
Hobbs Area Superintendent

JDM/1y

## Attachments

Approved: 2/1/73 10 51  
  
Director  
Oil Conservation Division  
Energy and Minerals Department

1. **THE STATE OF TEXAS, COUNTY OF DALLAS, ss. I, JAMES A. HARRIS, Clerk of the County Court, do hereby certify that the within and foregoing is a true and correct copy of the original as the same appears from the records of said County Court.**  
 2. **WITNESSES MY HAND AND SEAL OF OFFICE, this 11th day of May, 1906.**  
 3. **JAMES A. HARRIS,**  
 4. **Clerk of the County Court.**



IN REPLY REFER TO:

UNITED STATES  
DEPARTMENT OF THE INTERIOR  
GEOLOGICAL SURVEY

Drawer 1857  
Roswell, New Mexico 88201

November 17, 1970

Reserve Oil and Gas Company  
1806 Fidelity Union Tower  
Dallas, Texas 75201

Attention: Mr. M. Wyndell Thomas

Gentlemen:

Your initial plan of secondary recovery operations, dated September 28, 1970, supplemented by your letter of November 5, 1970, for the Cooper Jal unit, Lea County, New Mexico, has been approved on this date.

One approved copy of the plan is enclosed.

Sincerely yours,

(ORIG. SCD.) CARL C. TRAYWICK

CARL C. TRAYWICK  
Acting Oil and Gas Supervisor

cc:

Washington (w/cy plan)

Hobbs (w/cy plan)

NMOCC, Santa Fe (letter only)

OIL CONSERVATION DIVISION

P. O. BOX 2088

SANTA FE, NEW MEXICO 87501

February 17, 1981

Getty Oil Company  
P. O. Box 730  
Hobbs, New Mexico 88240

Attention: Dale R. Crockett

Re: Case No. 4402  
Cooper Jal Unit  
1981 Plan of Development

Gentlemen:

We hereby approve the 1981 Plan of Development for the Cooper Jal Unit, Lea County, New Mexico, subject to like approval by the United States Geological Survey and the Commissioner of Public Lands.

Three approved copies of the Plan of Development are returned herewith.

Yours very truly,

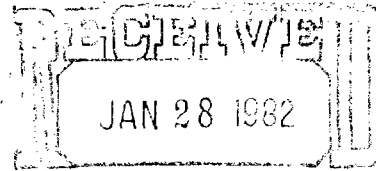
JOE D. RAMEY  
Director

JDR/EP/fd  
enc.

cc: U.S.G.S. - Albuquerque  
Commissioner of Public Lands

C  
O  
P  
Y





Getty Oil Company |

OIL CONSERVATION DIVISION  
SANTA FE

Central Exploration and Production Division

January 19, 1982

P.O. Box 730  
Hobbs, New Mexico 88240

File: Cooper Jal Unit  
Lea County, New Mexico

U.S. Geological Survey (3)  
Conservation Division  
P.O. Box 26124  
Albuquerque, New Mexico 87125

Commissioner of Public Lands (3)  
The State of New Mexico  
Capitol Annex Building  
Santa Fe, New Mexico 87501

Oil Conservation Division (3)  
of the State of New Mexico  
Capitol Annex Building  
Santa Fe, New Mexico

All Working Interest Owners

Gentlemen:

Getty Oil Company respectfully submits for your approval a report of past operations and a plan of development for the year 1982 on the Cooper Jal Unit.

#### PAST OPERATIONS

The Cooper Jal Unit became effective October 1, 1970. Injection started in November, 1971 into the combined Jalmat and Langlie Mattix Pools. Additional wells were converted between 1971 and 1976. By November 1, 1976 there were 23 injectors in the Jalmat and 25 in the Langlie Mattix.

Cumulative oil production from the Jalmat since unitization was 1,886,532 barrels as of November 1, 1981. The average daily producing rate during October, 1981 was 337 barrels of oil from 21 producers.

Cumulative oil production from the Langlie Mattix Pool was 2,242,553 barrels as of November 1, 1981. The average daily producing rate during October, 1981 was 464 barrels of oil from 28 producers.

Cumulative injection into the Jalmat since unitization was 27,488,165 barrels of water as of December 1, 1981. The average daily injection rate during November 1981 was 7314 barrels at 898 psig.

Cumulative injection into the Langlie Mattix since unitization was 282,760,133 barrels water as of December 1, 1981. The average daily injection rate during November, 1980 was 7985 barrels at 907 psig.

The unit was operated by Reserve Oil and Gas Company from the date of unitization until 1980 when Reserve Oil and Gas Company was merged into Getty Oil Company.

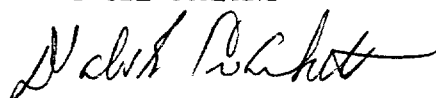
DEVELOPMENT PLANS FOR 1982

Plans for the unit are to perform remedial and stimulation workovers on wells as they are warranted for efficient oil recovery. Several tubing strings will probably be replaced, as scale and corrosion appears to be the major operational problem facing the unit.

Injection profiles will be conducted on a few of the injectors as warranted to aid in improving injection profiles and maintaining efficient waterflooding.

Very truly yours,

GETTY OIL COMPANY

A handwritten signature in dark ink, appearing to read "Dale R. Crockett", written in a cursive style.

Dale R. Crockett  
Area Superintendent

RH.

RH/ly

Enclosures

MAR 24 1982

MAR 22 1982

Getty Oil Company  
Attention: Dale R. Crockett  
P. O. Box 730  
Hobbs, New Mexico 88240

4402

Gentlemen:

An approved copy of your 1982 Plan of Development for the Cooper Jal unit area, Lea County, New Mexico is enclosed. Such plan, proposing that remedial and stimulation workovers on wells be performed as needed, was approved on this date subject to like approval by the appropriate officials of the State of New Mexico.

Sincerely yours,

(ORIG. SGD.) JAMES W. SHELTON

for Gene F. Daniel  
Deputy Minerals Manager  
Oil and Gas

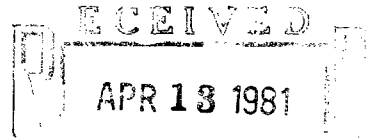
Enclosure

cc:  
NMOCD, Santa Fe  
DS, Roswell (w/encl)



IN REPLY REFER TO:

UNITED STATES  
DEPARTMENT OF THE INTERIOR  
GEOLOGICAL SURVEY  
South Central Region  
P. O. Box 26124  
Albuquerque, New Mexico 87125



06 APR 1981

OIL CONSERVATION DIVISION  
SANTA FE

4402

Getty Oil Company  
Attention: Dale R. Crockett  
P. O. Box 730  
Hobbs, New Mexico 88240

Gentlemen:

One approved copy of your 1981 plan of development for the Copper  
Jal unit area, Lea County, New Mexico is enclosed. Such plan,  
proposing to perform remedial and stimulation workovers on wells,  
was approved on this date subject to like approval by the  
appropriate officials of the State of New Mexico.

Sincerely yours,

ORIGINAL SIGNED BY:

Gene F. Daniel  
Deputy Conservation Manager  
Oil and Gas

Enclosure

cc:  
NMOCD, Santa Fe/  
DS, Roswell (w/enclosure)



# United States Department of the Interior

GEOLOGICAL SURVEY  
P. O. Drawer 1857  
Roswell, New Mexico 88201

APR 29 1976  
U.S. DEPARTMENT OF THE INTERIOR  
BUREAU OF LAND MANAGEMENT  
Santa Fe

April 29, 1976

Reserve Oil and Gas Company  
Attention: Mr. Erd M. Johnson  
First Savings Building  
Midland, Texas 79701

Gentlemen:

Your letter of April 19, 1976, transmitted two executed copies of a cooperative lease line agreement in which Reserve Oil and Gas Company as operator of the Cooper Jal unit and Skelly Oil Company as operator of the Myers Langlie Mattix unit, will cooperate in water flooding involving the common boundary between sec. 18, T. 24S., R. 37E., Cooper Jal unit, and sec. 7, T. 24S., R. 37E., Myers Langlie Mattix unit, Lea County, New Mexico.

Our letter of March 1, 1976, gave approval of the proposed lease line agreement. Inasmuch as you have submitted two fully executed copies of the cooperative lease line agreement, such agreement has been approved by the Acting Area Oil and Gas Supervisor on this date. You are requested to notify all interested parties of this approval.

Sincerely yours,

(ORIG. SGD.) CARL C. TRAYWICK

CARL C. TRAYWICK  
Acting Area Oil and Gas Supervisor

cc:  
Skelly Oil Company  
Attn: Leland Franz  
P. O. Box 1351  
Midland, TX 79701

Hobbs (w/cy agr.)  
NMOCC, Santa Fe (ltr. only) ← This Copy for  
Com. of Pub Lands, Santa Fe (ltr. only)

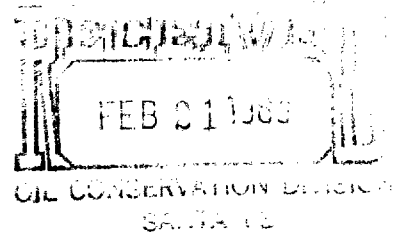
RLindau:d1k



IN REPLY  
REFER TO:

# United States Department of the Interior

BUREAU OF LAND MANAGEMENT  
505 MARQUETTE AVENUE, N.W., SUITE 815  
ALBUQUERQUE, NEW MEXICO 87102



FEB 17 1983

Getty Oil Company  
Attention: Dale R. Crockett  
P. O. Box 730  
Hobbs, New Mexico 88240

Gentlemen:

An approved copy of your 1983 plan of development for the Cooper Jal  
unit area, Lea County, New Mexico, is enclosed. Such plan, proposing  
to perform remedial and stimulation workovers on wells as they are  
warranted, was approved on this date subject to like approval by the  
appropriate officials of the State of New Mexico.

Sincerely yours,

(SIGNED)

Gene F. Daniel  
Deputy Minerals Manager  
Oil and Gas

Enclosure

cc:  
NMOCD



IN REPLY REFER TO

# United States Department of the Interior

## BUREAU OF LAND MANAGEMENT

Box 1200, Roswell, New Mexico 88201

# 4402

Cooper Jal Unit

April 2, 1984

Getty Oil Company  
Attention: Mr. W. A. Fruea  
P.O. Box 730  
Hobbs, NM 88240

NOT STATE

Gentlemen:

Enclosed is an approved copy of your 1984 Plan of Development and Operation for the Cooper Jal Unit Area, Lea County, covering the period beginning January 1, 1984, and ending December 31, 1984. This plan, proposing that numerous stimulations and remedial workovers on wells will be performed to improve secondary oil recovery during 1984, was approved this date, subject to like approval by the New Mexico Commissioner of Public Lands and the New Mexico Oil Conservation Division.

Sincerely yours,

*S/Richard Bastin*

Associate District Manager

Enclosure (1)

cc: Commissioner of Public Lands, Santa Fe  
NMOC, Santa Fe

JOEL M. CARSON

LAW OFFICES  
**A. J. LOSEE**  
CARPER BUILDING - P. O. DRAWER 239  
ARTESIA, NEW MEXICO 88210

AREA CODE 505  
746-3508

9 October 1970

970 OCT 13 AM 8 21

Oil Conservation Commission  
P. O. Box 2088  
Santa Fe, New Mexico

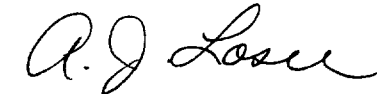
Re: Cooper Jal Unit Agreement, Lea County, New Mexico  
Our File 18-007-001

Gentlemen:

The Cooper Jal Unit Agreement was approved by the United States Geological Survey on September 29, 1970, and was designated as their No. 14-08-0001-11584. Enclosed, you will please find a xerox copy of the certificate of such approval.

Also enclosed, you will please find xerox copy of the Certificate as to Effective Date reflecting that pursuant to the provisions of Article 22, the Unit Agreement became effective as of 7:00 A.M., October 1, 1970. This certificate was filed on October 1, 1970, in Book 292 at Page 707 of the Miscellaneous Records of Lea County.

Very truly yours,



A. J. Losee

AJL:jw  
Enclosures

cc: Mr. John Pingree





UNITED STATES  
DEPARTMENT OF THE INTERIOR  
GEOLOGICAL SURVEY  
Drawer 1857  
Roswell, New Mexico 88201

MS 2144  
PM 12 54  
130 06  
P 10 OCT

IN REPLY REFER TO:

440  
September 29, 1970

Mr. A. J. Losee  
P. O. Drawer 239  
Artesia, New Mexico 88210

Dear Mr. Losee:

The Cooper Jal unit agreement, Lea County, New Mexico, was approved on September 29, 1970, and has been designated No. 14-08-0001-11584. Please submit the Certificate of Effectiveness required by Article 22 of the unit agreement to formally establish the effective date.

Enclosed is one approved copy of the unit agreement for your records. Please furnish the New Mexico Oil Conservation Commission and all other interested principals with appropriate evidence of this approval.

Sincerely yours,

(ORIG. SCD.) CARL C. TRAYWICK

CARL C. TRAYWICK  
Acting Oil and Gas Supervisor

cc:  
Washington (w/cy agreement)  
BLM, Santa Fe (w/cy agreement)  
NMOCC, Santa Fe (w/cy agreement)  
BOMC, Roswell  
Hobbs (w/cy agreement)



UNITED STATES  
DEPARTMENT OF THE INTERIOR  
GEOLOGICAL SURVEY

Drawer 1857  
Roswell, New Mexico 88201

November 18, 1970

4400

Mr. A. J. Losee  
P.O. Drawer 239  
Artesia, New Mexico 88210

Dear Mr. Losee:

Receipt of the following papers submitted by you in behalf of Reserve Oil and Gas Company relative to commitment of certain production payment interests in the Cooper Jal unit area is hereby acknowledged.

1. Joinder to the unit agreement by Permian Charitable Foundation of Midland, Texas, Inc., committing its production payment interests in tracts 4, 14, 19 and 25.
2. Letter from R. Olsen Estate stating that Texas Pacific Oil Company is authorized to commit said estate's production payment interest in tract 3 to the unit agreement.
3. Letter from Howard Olsen stating that Texas Pacific Oil Company is authorized to commit his production payment interest in tract 3 to the unit agreement.
4. Release of production payment in tract 3 by the Prudential Insurance Company of America.
5. Release of production payment in tracts 4, 14, 19 and 25 by ANC Corporation.

(ORIG. SGD.) CARL C. TRAYWICK  
CARL C. TRAYWICK  
Acting Oil and Gas Supervisor

cc:  
Washington (w/cy atchs)  
Hobbs (w/cy atchs)  
BLM, Santa Fe (w/cy atchs)  
NMOCC, Santa Fe (ltr only)  
Accounting



UNITED STATES  
DEPARTMENT OF THE INTERIOR  
GEOLOGICAL SURVEY

Drawer 1857  
Roswell, New Mexico 88201

PH 1 06  
130 OCT  
970

IN REPLY REFER TO:

October 14, 1970

A. J. Losee  
P. O. Drawer 239  
Artesia, New Mexico 88210

Dear Mr. Losee:

Your letter of October 9, 1970, transmits one copy of a "Certificate as to Effective Date" for the Cooper Jal unit agreement, No. 14-08-0001-11584. Such instrument is filed pursuant to Article 22 of the unit agreement to formally establish the effective date of the unit agreement as October 1, 1970. The certificate is hereby accepted for the record and copies thereof are being furnished to the appropriate Federal offices.

Sincerely yours,

N. O. FREDERICK  
Regional Oil and Gas Supervisor

cc:  
Washington (w/cy attach.)  
BLM, Santa Fe (w/cy attach.)  
Hobbs (w/cy attach.)  
NMOCC, Santa Fe (ltr. only) ✓  
Accounts



JOEL M. CARSON

LAW OFFICES  
**A. J. LOSEE**  
CARPER BUILDING - P. O. DRAWER 239  
ARTESIA, NEW MEXICO 88210

17 July 1970

20 JUL 20 1970

AREA CODE 505  
746-3508

Mr. A. L. Porter, Jr.  
Secretary-Director  
Oil Conservation Commission  
P. O. Box 2088  
Santa Fe, New Mexico 87501

*Case 4402*

Dear Mr. Porter:

Enclosed, please find triplicate copies of the following applications, together with the attachments therein referred to, before the Oil Conservation Commission of the State of New Mexico, to-wit:

- ✓ 1. Application for Approval of Cooper-Jal Unit Agreement.
2. Application for Approval of Waterflood Project, Jalmat Oil Pool.
3. Application for Approval of a Waterflood Project, Langlie Mattix Pool.
4. Application for Approval of South Langlie Jal Unit Agreement.
5. Application for Approval of a Waterflood Project, South Langlie-Mattix Pool.

We ask that you set these cases for hearing before an examiner on August 19, 1970.

Very truly yours,

  
A. J. Losee

AJL:jw  
Enclosures

cc: Mr. Carl Traywick, Acting Supervisor  
U.S.G.S., Roswell, New Mexico with  
Application for Approval of Cooper-  
Jal Unit Agreement enclosed.  
Mr. M. Wyndell Thomas



Texas Eastern America Production  
10000 North Street, Suite 1000

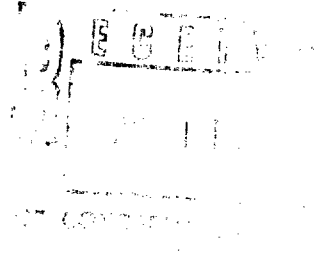
500 North Loraine  
Midland TX 79701

500 North Loraine  
Midland TX 79702

4402

April 4, 2000

Assistant District Manager  
Bureau of Land Management  
Roswell District Office  
2909 West 2<sup>nd</sup> Street  
Roswell, New Mexico 88201-2019



✓ New Mexico Oil Conservation Division  
2040 S. Pacheco  
Santa Fe, New Mexico 87501

All Working Interest Owners  
(Address List Attached)

**COOPER JAL UNIT**  
Secondary Recovery Unit  
Lea County, New Mexico

Ladies and Gentlemen:

As operator of the Cooper Jal Unit Texaco Exploration and Production Inc. (TEPI) submits for your approval a report of 1999 operations and a plan of development and operation for the year 2000. Enclosed are a unit map, unit production curve, and well status report.

### **PAST OPERATIONS**

The Cooper Jal Unit became effective October 1, 1970. Injection into the Jalmat and Langlie Mattix Pools started in December 1970. The Unit operator converted additional wells to injection between 1971 and 1976. An infill drilling program occurred in the mid-1990's along with pattern adjustments.

Cumulative production from the Jalmat and Langlie Mattix Pools since unitization is 8.23 MMBO and 11.12 BCFG as of December 31, 1999. The average daily production was 599 BOPD, 595(Est.) MCFD, and 654 BWPD during December, 1999. Cumulative injection into the Jalmat and Langlie Mattix Pools is 133,709 MBW through December 31, 1999. The average daily water injection rate during December 1999 was 6,818 barrels.

Bureau of Land Management,  
New Mexico OCD, &  
Working Interest Owners  
April 4, 2000  
Page 2

### **OPERATIONS SUMMARY FOR 1999**

Operations for the last year focused primarily on reducing operating expenses and maintaining lease profitability in a time of low oil prices. Several uneconomic or marginally economic patterns were shut-in.

### **DEVELOPMENT PLANS FOR 2000**

In 2000, TEPI plans to continue monitoring the waterflood redevelopment initiated during 1993, with emphasis on maintaining economic operations in a time of depressed oil prices. Minor well work will be performed as warranted. Performance of the wells drilled in the mid-1990's will be reviewed to determine whether additional drilling may be feasible.

Yours very truly,

A handwritten signature in cursive script, reading "C. E. Sadler" followed by a stylized monogram "MSK".

Charles E. Sadler  
Asset Manager

CRW-NAZ

Enclosure

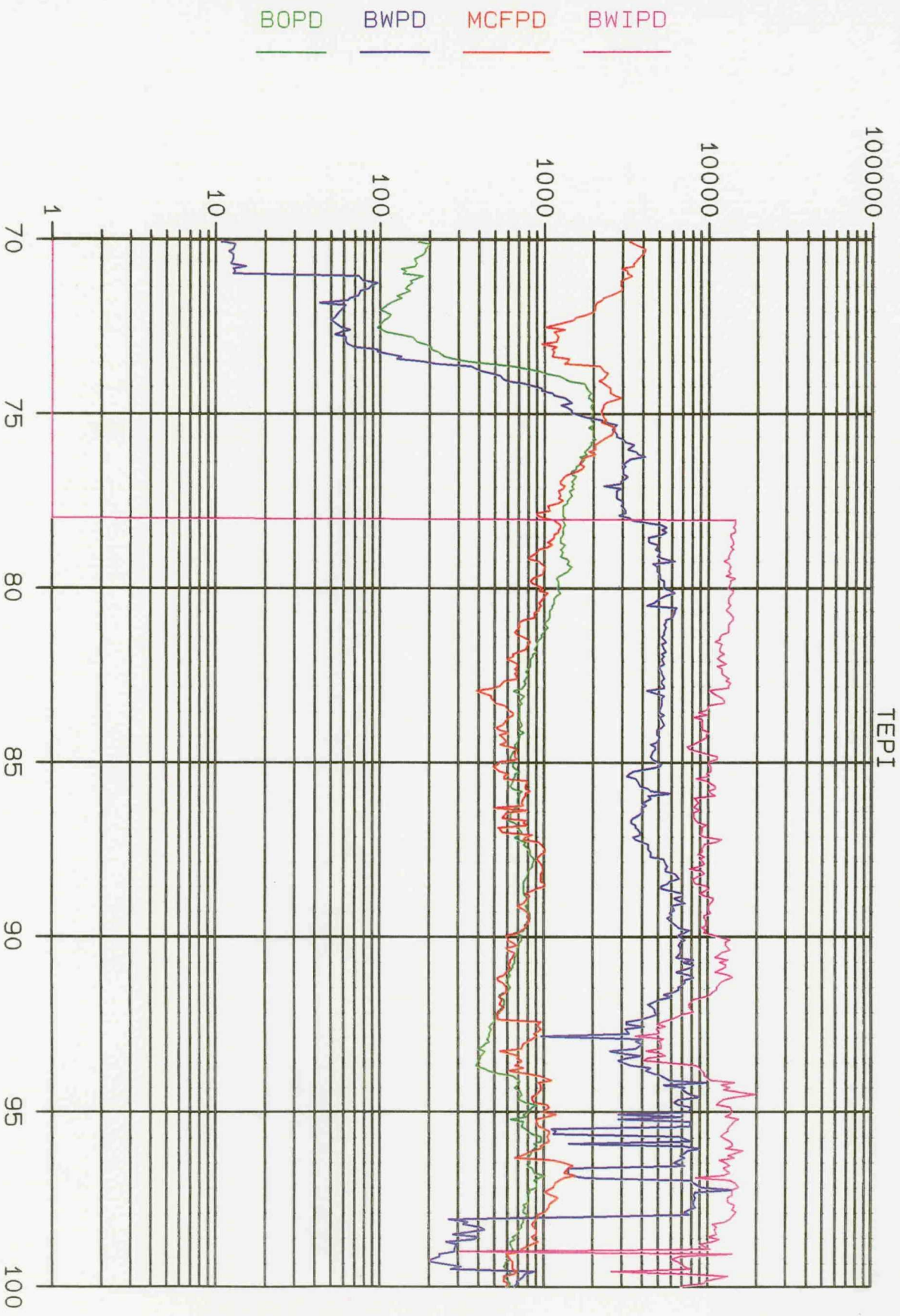
COOPER JAL UNIT  
LEA COUNTY, NEW MEXICO  
WELL STATUS  
DECEMBER, 1999

WELL NO.	STATUS		WELL NO.	STATUS		WELL NO.	STATUS	
101	Active	Producer	204	Shut-In	Producer			
102	Active	Producer	205	Active	Injector			
103	Shut-in	Injector	206	Shut-In	Producer			
104	Shut-in	Injector	208	Active	Producer			
105	Shut-in	Producer	209	Shut-in	Producer			
106	Active	Producer	210	Shut-in	Producer			
107	Shut-in	Producer	211	Active	Injector			
108	Shut-in	Producer	215	Active	Producer			
109	Shut-in	Injector	216	Active	Injector			
110	Active	Producer	217	Active	Producer			
111	Shut-in	Producer	218	Active	Injector			
112	Shut-in	Injector	219	Active	Producer			
113	Shut-in	Producer	220	Active	Injector			
114	Active	Injector	221	Active	Producer			
115	Active	Producer	222	Shut-In	Injector			
116	Active	Injector	223	Active	Producer			
117	Shut-in	Producer	224	Active	Injector			
118	Shut-in	Injector	225	Shut-in	Producer			
119	Shut-in	Producer	226	Active	Injector			
120	Active	Injector	227	Shut-in	Producer			
121	Shut-in	Producer	228	Active	Injector			
122	Active	Injector	229	Shut-in	Producer			
124	Shut-in	Injector	230	Shut-In	Producer			
125	Active	Producer	231	Shut-in	Producer			
126	Active	Injector	232	Active	Producer			
127	Active	Producer	234	Active	Injector			
128	Active	Producer	237	Shut-in	Injector			
129	Shut-in	Producer	238	Active	Injector			
130	Active	Producer	239	Active	Injector			
132	Active	Injector	241	Active	Injector			
133	Active	Injector	242	Active	Injector			
134	Active	Injector	244	Shut-in	Producer			
135	Active	Injector	245	Active	Producer			
136	Active	Producer	302	Shut-in	Producer			
138	Active	Producer	303	Active	Producer			
139	Active	Producer	401	Shut-in	Producer			
140	Active	Producer	402	Shut-in	Producer			
141	Active	Producer	403	Shut-in	Producer			
143	Active	Injector	404	Shut-in	Producer			
145	Shut-in	Injector	405	Active	Producer			
146	Active	Injector	406	Active	Producer			
147	Active	Injector	407	Active	Producer			
148	Shut-In	Producer	408	Active	Producer			
150	Active	Producer	409	Active	Producer			
151	Shut-In	Injector	411	Active	Producer			
152	Shut-in	Producer	412	Active	Producer			
153	Active	Injector	413	Active	Producer			
154	Shut-in	Producer	414	Active	Producer			
155	Shut-in	Producer	415	Active	Producer			
201	Active	Injector	419	Active	Producer			
202	Active	Producer	421	Active	Producer			
203	Active	Injector	422	Active	Producer			

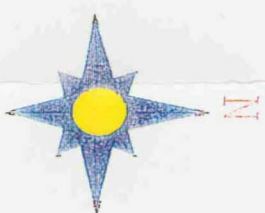


COOPER JAL UNIT

TEPI

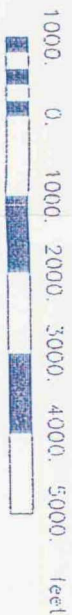


YEARS



- LEGEND
- SINGLE OIL PRODUCER
  - DHC OIL PRODUCER
  - △ WATER INJECTOR
  - ☀ GAS PRODUCER
  - ⊗ SI DHC PRODUCER
  - ▽ SI WATER INJECTOR
  - ☀ SI GAS PRODUCER
  - ⊗ SI DUAL INJECTOR
  - △ DUAL INJECTOR

Scale 1:28900.4



TEXACO EXPLORATION AND PRODUCTION INC			
COOPER JAL UNIT			
LEA COUNTY, NEW MEXICO			
REDEVELOPMENT PROGRAM			
DES			3/25/97
Scale 1:28900.4			



OK'd 3/30/99

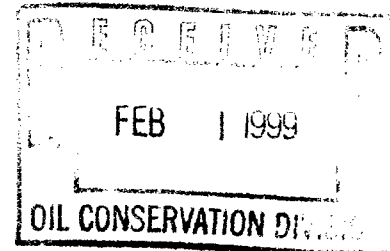
Division of Wildlife Management  
P.O. Box 79701  
Austin, Texas 78779-0701

Oil North Division  
Midland, TX 79701

Division of Wildlife Management  
P.O. Box 79701  
Austin, Texas 78779-0701

January 28, 1999

Assistant District Manager  
Bureau of Land Management  
Roswell District Office  
2909 West 2<sup>nd</sup> Street  
Roswell, New Mexico 88201-2019



New Mexico Oil Conservation Division  
2040 S. Pacheco  
Santa Fe, New Mexico 87501

All Working Interest Owners  
(Address List Attached)

**COOPER JAL UNIT**  
Secondary Recovery Unit  
Lea County, New Mexico

Ladies and Gentlemen:

As operator of the Cooper Jal Unit Texaco Exploration and Production Inc. (TEPI) submits for your approval a report of 1998 operations and a plan of development and operation for the year 1999. Enclosed are a unit map, unit production curve, and well status report.

### **PAST OPERATIONS**

The Cooper Jal Unit became effective October 1, 1970. Injection into the Jalmat and Langlie Mattix Pools started in December 1970. The Unit operator converted additional wells to injection between 1971 and 1976. An infill drilling program occurred in the mid-1990's along with pattern adjustments.

Cumulative production from the Jalmat and Langlie Mattix Pools since unitization is 8.01 MMBO and 10.95 BCFG as of December 31, 1998. The average daily production was 673 BOPD, 800(Est.) MCFD, and 5,100 BWPD during December, 1998. Cumulative injection into the Jalmat and Langlie Mattix Pools is 130,751 MBW through December 31, 1998. The average daily water injection rate during December 1998 was 7,284 barrels.

Bureau of Land Management,  
New Mexico OCD, &  
Working Interest Owners  
January 28, 1999  
Page 2


### **OPERATIONS SUMMARY FOR 1998**

Operations for the last year focused primarily on reducing operating expenses and maintaining lease profitability in a time of low oil prices. Several uneconomic or marginally economic patterns were shut-in. A smaller injection pump was installed to reduce injection costs. The clean-up and remediation of numerous old battery sites was carried out.

### **DEVELOPMENT PLANS FOR 1999**

In 1999, TEPI plans to continue monitoring the waterflood redevelopment initiated during 1993, with emphasis on maintaining economic operations in a time of depressed oil prices. Minor well work will be performed as warranted.

Yours very truly,

A handwritten signature in cursive script, appearing to read "Charles E. Sadler".

Charles E. Sadler  
Asset Manager

CRW-NAZ

Enclosure



COOPER JAL UNIT  
LEA COUNTY, NEW MEXICO  
WELL STATUS  
DECEMBER, 1998

WELL NO.	STATUS		WELL NO.	STATUS		WELL NO.	STATUS	
101	Active	Producer	204	Shut-In	Producer			
102	Active	Producer	205	Active	Injector			
103	Shut-in	Injector	206	Shut-In	Producer			
104	Shut-in	Injector	208	Active	Producer			
105	Shut-in	Producer	209	Shut-in	Producer			
106	Active	Producer	210	Shut-in	Producer			
107	Active	Producer	211	Active	Injector			
108	Shut-in	Producer	215	Active	Producer			
109	Shut-in	Injector	216	Active	Injector			
110	Active	Producer	217	Active	Producer			
111	Shut-in	Producer	218	Active	Injector			
112	Shut-in	Injector	219	Active	Producer			
113	Shut-in	Producer	220	Active	Injector			
114	Active	Injector	221	Active	Producer			
115	Active	Producer	222	Shut-In	Injector			
116	Active	Injector	223	Active	Producer			
117	Active	Producer	224	Active	Injector			
118	Shut-in	Injector	225	Shut-in	Producer			
119	Shut-in	Producer	226	Active	Injector			
120	Active	Injector	227	Active	Producer			
121	Active	Producer	228	Active	Injector			
122	Active	Injector	229	Shut-in	Producer			
124	Shut-in	Injector	230	Shut-In	Producer			
125	Active	Producer	231	Active	Producer			
126	Active	Injector	232	Active	Producer			
127	Active	Producer	234	Active	Injector			
128	Active	Producer	237	Shut-in	Injector			
129	Shut-in	Producer	238	Active	Injector			
130	Active	Producer	239	Active	Injector			
132	Active	Injector	241	Active	Injector			
133	Active	Injector	242	Active	Injector			
134	Active	Injector	244	Shut-in	Producer			
135	Shut-In	Injector	245	Active	Producer			
136	Active	Producer	302	Shut-in	Producer			
138	Active	Producer	303	Active	Producer			
139	Active	Producer	401	Shut-in	Producer			
140	Active	Producer	402	Shut-in	Producer			
141	Active	Producer	403	Shut-in	Producer			
143	Active	Injector	404	Active	Producer			
145	Shut-in	Injector	405	Active	Producer			
146	Active	Injector	406	Active	Producer			
147	Active	Injector	407	Active	Producer			
148	Shut-In	Producer	408	Active	Producer			
150	Active	Producer	409	Active	Producer			
151	Shut-In	Injector	411	Active	Producer			
152	Shut-in	Producer	412	Active	Producer			
153	Active	Injector	413	Active	Producer			
154	Shut-in	Producer	414	Active	Producer			
155	Shut-in	Producer	415	Active	Producer			
201	Active	Injector	419	Active	Producer			
202	Active	Producer	421	Active	Producer			
203	Active	Injector	422	Active	Producer			

ARCO Permian  
A Unit of Atlantic Richfield Company  
P. O. Box 1610  
Midland, TX 79702

George Bauerdorf Estate  
9363 Wilshire Boulevard, Suite 211  
Beverly Hills, CA 90210

Emilie S. Blaine  
715 Forest Trace  
Rockwall, TX 75087

James A. Davidson  
P. O. Box 494  
Midland, TX 79702

Exxon Company, USA  
Joint Interest Group  
P. O. Box 4707  
Houston, TX 77210-4707

Robert Kruse  
P. O. Box 327  
Key West, FL 33040

Robert Kruse  
P. O. Box 327  
Key West, FL 33040

McBride Oil & Gas Corp.  
P. O. Box 1515  
Roswell, NM 88202

Larry A. Nermyr  
HC-57, Box 4106  
Sidney, MT 59270

Costilla Energy LLC  
P. O. Box 10369  
Midland, TX 79702

Mark L. Shidler, Inc.  
Petroleum Exploration & Production  
1010 Lamar, Suite 500  
Houston, Texas 77002

Adele I. Sowell Estate  
10721 45th Avenue S.E.  
Everett, WA 98208

Sunwest Bank of Albuquerque  
Trustee of the T. J. and  
Mary Ray Sivley Trust  
P. O. Box 26900  
Albuquerque, NM 87125-6900

# COOPER JAL UNIT

TEPI

100000

LEASE DATA

LSE

FLD

OPER TEPI

ZONE

--

COUNTY

STATE

10000

STATUS 12-98

CO 8963 MBO

CG 12681 MMCF

CW 45013 MBW

BOPD 673

BWPD 5100

MCFPD 800

WELLS 1

CI 84955 MBWI

BWIPD 7284

BWIPD

MCFPD

BWPD

BOPD

YEARS

70

75

80

85

90

95

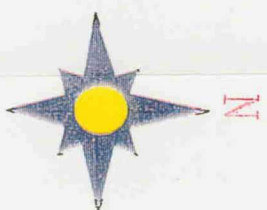
100

100

10

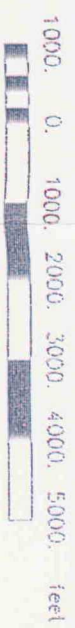
1





- LEGEND
- SINGLE OIL PRODUCER
  - DHC OIL PRODUCER
  - △ WATER INJECTOR
  - ☀ GAS PRODUCER
  - ⊗ SI DHC PRODUCER
  - ▽ SI WATER INJECTOR
  - ☀ SI GAS PRODUCER
  - ▽ SI DUAL INJECTOR
  - ⊗ DUAL INJECTOR

Scale 1:28900 4



TEXACO EXPLORATION AND PRODUCTION INC.

COOPER JAL UNIT  
LEA COUNTY, NEW MEXICO  
REDEVELOPMENT PROGRAM

CES

Scale 1:28900.4

3/25/97

