

#4985

**2002 PLAN OF DEVELOPMENT  
PIPELINE DEEP UNIT AREA  
LEA COUNTY, NEW MEXICO**

TO: New Mexico Oil Conservation Division  
Energy, Minerals & Natural Resources  
2040 South Pacheco Street  
Santa Fe, New Mexico 87505  
Attention: Lori Wrotenbery, Director

Pursuant to the provisions of Section 10 of the Pipeline Deep Unit Agreement for Development and Operation of the Pipeline Deep Unit Area dated April 12, 1973 (No. 14-08-0001-12402), Matador Operating Company, as Unit Operator for the Pipeline Deep Unit, respectfully submits for approval this 2002 Plan of Development for the Pipeline Deep Unit Area for the period ending December 31, 2002.

**SUMMARY OF 2001 OPERATIONS**

No wells were drilled or recompleted in 2001. Production for 2001 is summarized below:

WELL NAME	PRODUCING INTERVAL	GAS MCF	CONDENSATE BBL
Pipeline Deep #1	Middle Morrow	24,706	121
Pipeline Deep #2	Middle/Upper Morrow	40,790	1,093

**PLAN OF DEVELOPMENT FOR 2002**

No development wells or recompletions are scheduled.

This plan may be modified or supplemented from time to time with the approval needed, when necessary, to meet changed conditions or to protect the interest of all parties to the Unit Agreement.

Submitted this 1<sup>st</sup> day of April, 2002.

Sincerely,

MATADOR OPERATING COMPANY

  
R.F. Burke, Vice President

**2003 PLAN OF DEVELOPMENT  
PIPELINE DEEP UNIT AREA  
LEA COUNTY, NEW MEXICO**

TO: New Mexico Oil Conservation Division  
Energy, Minerals & Natural Resources  
2040 South Pacheco Street  
Santa Fe, New Mexico 87505  
Attention: Lori Wrotenbery, Director

Pursuant to the provisions of Section 10 of the Pipeline Deep Unit Agreement for Development and Operation of the Pipeline Deep Unit Area dated April 12, 1973 (No. 14-08-0001-12402), Matador Operating Company, as Unit Operator for the Pipeline Deep Unit, respectfully submits for approval this 2003 Plan of Development for the Pipeline Deep Unit Area for the period ending December 31, 2003.

**SUMMARY OF 2002 OPERATIONS**

No wells were drilled or recompleted in 2002. Production for 2002 is summarized below:

WELL NAME	PRODUCING INTERVAL	GAS MCF	CONDENSATE BBL
Pipeline Deep #1	Middle Morrow	21,760	1,448
Pipeline Deep #2	Middle/Upper Morrow	43,428	630

**PLAN OF DEVELOPMENT FOR 2003**

No development wells or recompletions are scheduled for 2003.

This plan may be modified or supplemented from time to time with the approval needed, when necessary, to meet changed conditions or to protect the interest of all parties to the Unit Agreement.

Submitted this 1<sup>st</sup> day of April, 2003.

Sincerely,

MATADOR OPERATING COMPANY



R.F. Burke, Vice President

★ 4985

**2001 PLAN OF DEVELOPMENT  
PIPELINE DEEP UNIT AREA  
LEA COUNTY, NEW MEXICO**

TO: New Mexico Oil Conservation Division  
Energy, Minerals & Natural Resources  
2040 South Pacheco Street  
Santa Fe, New Mexico 87505  
Attention: Lori Wrotenbery, Director

Pursuant to the provisions of Section 10 of the Pipeline Deep Unit Agreement for Development and Operation of the Pipeline Deep Unit Area dated April 12, 1973 (No. 14-08-0001-12402), Matador Operating Company, as Unit Operator for the Pipeline Deep Unit, respectfully submits for approval this 2001 Plan of Development for the Pipeline Deep Unit Area for the period ending December 31, 2001.

**SUMMARY OF 2000 OPERATIONS**

No wells were drilled or recompleted in 2000. Production for 2000 is summarized below:

WELL NAME	PRODUCING INTERVAL	GAS MCF	CONDENSATE BBL
Pipeline Deep #1	Middle Morrow	32,154	138
Pipeline Deep #2	Middle/Upper Morrow	48,496	1,062

**PLAN OF DEVELOPMENT FOR 2001**

No development wells or recompletions are scheduled.

This plan may be modified or supplemented from time to time with the approval needed, when necessary, to meet changed conditions or to protect the interest of all parties to the Unit Agreement.

Submitted this 1<sup>st</sup> day of April, 2001.

Sincerely,

MATADOR OPERATING COMPANY

  
R.F. Burke, Vice President

**2000 PLAN OF DEVELOPMENT  
PIPELINE DEEP UNIT AREA  
LEA COUNTY, NEW MEXICO**

TO: New Mexico Oil Conservation Division  
Energy, Minerals & Natural Resources  
2040 South Pacheco Street  
Santa Fe, New Mexico 87505  
Attention: Lori Wrotenberg, Director

Pursuant to the provisions of Section 10 of the Unit Agreement for Development and Operation of the Pipeline Deep Unit Area dated April 12, 1973 (No. 14-08-0001-12402), Matador Operating Company as Unit Operator for the Pipeline Deep Unit, respectfully submits for approval this 2000 Plan of Development for the Pipeline Deep Unit Area for the period ending December 31, 2000.

**SUMMARY OF 1999 OPERATIONS**

No wells were drilled or recompleted in 1999. Production for 1999 is summarized below:

WELL NAME	PRODUCING INTERVAL	GAS MCF	CONDENSATE BBL
Pipeline Deep #1	Middle Morrow	38,642	185
Pipeline Deep #2	Middle/Upper Morrow	50,743	1,048

**PLAN OF DEVELOPMENT FOR 2000**

No development wells or recompletions are scheduled.

This plan may be modified or supplemented from time to time with the approval needed, when necessary, to meet changed conditions or to protect the interest of all parties to the Unit Agreement.

Submitted this 1st day of April, 2000.

Sincerely,

MATADOR OPERATING COMPANY



R. F. Burke, Vice President

MA

**2000 PLAN OF DEVELOPMENT  
PIPELINE DEEP UNIT AREA  
LEA COUNTY, NEW MEXICO**

TO: New Mexico Oil Conservation Division  
Energy, Minerals & Natural Resources  
2040 South Pacheco Street  
Santa Fe, New Mexico 87505  
Attention: Lori Wrotenbery, Director

Pursuant to the provisions of Section 10 of the Unit Agreement for Development and Operation of the Pipeline Deep Unit Area dated April 12, 1973 (No. 14-08-0001-12402), Matador Operating Company as Unit Operator for the Pipeline Deep Unit, respectfully submits for approval this 2000 Plan of Development for the Pipeline Deep Unit Area for the period ending December 31, 2000.

**SUMMARY OF 1999 OPERATIONS**

No wells were drilled or recompleted in 1999. Production for 1999 is summarized below:

WELL NAME	PRODUCING INTERVAL	GAS MCF	CONDENSATE BBL
Pipeline Deep #1	Middle Morrow	38,642	185
Pipeline Deep #2	Middle/Upper Morrow	50,743	1,048

**PLAN OF DEVELOPMENT FOR 2000**

No development wells or recompletions are scheduled.

This plan may be modified or supplemented from time to time with the approval needed, when necessary, to meet changed conditions or to protect the interest of all parties to the Unit Agreement.

Submitted this 1st day of April, 2000.

Sincerely,

MATADOR OPERATING COMPANY



R. F. Burke, Vice President

MA

**1999 PLAN OF DEVELOPMENT  
PIPELINE DEEP UNIT AREA  
LEA COUNTY, NEW MEXICO**

TO: New Mexico Oil Conservation Division  
Energy & Minerals Division  
2040 South Pacheco Street  
Santa Fe, New Mexico 87505  
Attention: Lori Wrotenbery, Director

Pursuant to the provisions of Section 10 of the Unit Agreement for Development and Operation of the Pipeline Deep Unit Area dated April 12, 1973 (No. 14-08-0001-12402), Matador Operating Company as Unit Operator for the Pipeline Deep Unit, respectfully submits for approval this 1999 Plan of Development for the Pipeline Deep Unit Area for the period ending December 31, 1999.

**SUMMARY OF 1998 OPERATIONS**

No wells were drilled or recompleted in 1998. Production for 1998 is summarized below:

WELL NAME	PRODUCING INTERVAL	GAS MCF	CONDENSATE BBL
Pipeline Deep #1	Middle Morrow	42694	222
Pipeline Deep #2	Middle/Upper Morrow	54303	668

**PLAN OF DEVELOPMENT FOR 1999**

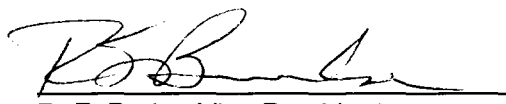
No development wells or recompletions are scheduled.

This plan may be modified or supplemented from time to time with the approval needed, when necessary, to meet changed conditions or to protect the interest of all parties to the Unit Agreement.

Submitted this 1st day of April, 1999.

Sincerely,

MATADOR OPERATING COMPANY

  
R. F. Burke, Vice President MA

**1999 PLAN OF DEVELOPMENT  
PIPELINE DEEP UNIT AREA  
LEA COUNTY, NEW MEXICO**

TO: New Mexico Oil Conservation Division  
Energy & Minerals Division  
2040 South Pacheco Street  
Santa Fe, New Mexico 87505  
Attention: Lori Wrotenbery, Director

Pursuant to the provisions of Section 10 of the Unit Agreement for Development and Operation of the Pipeline Deep Unit Area dated April 12, 1973 (No. 14-08-0001-12402), Matador Operating Company as Unit Operator for the Pipeline Deep Unit, respectfully submits for approval this 1999 Plan of Development for the Pipeline Deep Unit Area for the period ending December 31, 1999.

**SUMMARY OF 1998 OPERATIONS**

No wells were drilled or recompleted in 1998. Production for 1998 is summarized below:

WELL NAME	PRODUCING INTERVAL	GAS MCF	CONDENSATE BBL
Pipeline Deep #1	Middle Morrow	42694	222
Pipeline Deep #2	Middle/Upper Morrow	54303	668

**PLAN OF DEVELOPMENT FOR 1999**


No development wells or recompletions are scheduled.

This plan may be modified or supplemented from time to time with the approval needed, when necessary, to meet changed conditions or to protect the interest of all parties to the Unit Agreement.

Submitted this 1st day of April, 1999.

Sincerely,

MATADOR OPERATING COMPANY

  
R. F. Burke, Vice President MA



NEW MEXICO ENERGY, MINERALS  
& NATURAL RESOURCES DEPARTMENT

4985  
OIL CONSERVATION DIVISION  
2040 South Pacheco Street  
Santa Fe, New Mexico 87505  
(505) 827-7131

April 28, 1998

Mona D. Ables  
Matador Petroleum Corporation  
Suite 158, Pecan Creek  
8340 Meadow Road  
Dallas, TX 75231-3751

RE: 1998 Plan of Development  
Pipeline Deep Unit Area  
Lea County, New Mexico  
Pipeline Prospect

Gentlemen:

The New Mexico Oil Conservation Division is in receipt of your above referenced application which has been approved on this date. Our approval is subject to like approval by the New Mexico State Land Office and the Bureau of Land Management where applicable.

Should you have any questions pertaining to this matter, please contact me at (505) 827-8198.

Sincerely,

Roy E. Johnson  
Senior Petroleum Geologist

REJ:kv

cc: NMSLO  
Bureau of Land Management - Roswell  
Unit File

---



**MATADOR PETROLEUM CORPORATION**

SUITE 158, PECAN CREEK  
8340 MEADOW ROAD  
DALLAS, TEXAS 75231-3751  
(214) 987-3650  
FAX: (214) 691-1415

April 13, 1998

1998 Plan of Development  
Pipeline Deep Unit Area  
Lea County, New Mexico  
Pipeline Prospect

Oil Conservation Division  
Energy & Minerals Division  
2040 South Pacheco  
Santa Fe, NM 87505  
Attention: Lori Wrotenbury

Gentlemen:

Enclosed for your approval, please find two (2) copies of Matador Operating Company's 1998 Plan of Development for the Pipeline Deep Unit Area.

If you need any additional information, please feel free to call.

Sincerely,



Mona D. Ables  
(214) 987-7129

**1998 PLAN OF DEVELOPMENT  
PIPELINE DEEP UNIT AREA  
LEA COUNTY, NEW MEXICO**

TO: Oil Conservation Division  
Energy & Minerals Division  
2040 South Pacheco  
Santa Fe, New Mexico 87505  
Attention: Mrs. Lori Wrotenbury, Director

Pursuant to the provisions of Section 10 of the Unit Agreement for Development and Operation of the Pipeline Deep Unit Area dated April 12, 1973 (No. 14-08-0001-12402), Matador Operating Company as Unit Operator for the Pipeline Deep Unit, respectfully submits for approval this 1998 Plan of Development for the Pipeline Deep Unit Area for the period ending December 31, 1998.

**SUMMARY OF 1997 OPERATIONS**

No wells were drilled or recompleted in 1997. Production for 1997 is summarized below:

WELL NAME	PRODUCING INTERVAL	GAS MMCF	CONDENSATE BBL
Pipeline Deep #1	Middle Morrow	11.438	1351
Pipeline Deep #2	Middle/Upper Morrow	59.454	1223

**PLAN OF DEVELOPMENT FOR 1998**

No new wells or recompletions are scheduled.

This plan may be modified or supplemented from time to time with the approval needed, when necessary, to meet changed conditions or to protect the interest of all parties to the Unit Agreement.

Submitted this 9<sup>th</sup> day of April, 1998.

Sincerely,

MATADOR OPERATING COMPANY

  
Austin Murr  
Land Manager

**1998 PLAN OF DEVELOPMENT  
PIPELINE DEEP UNIT AREA  
LEA COUNTY, NEW MEXICO**

TO: Oil Conservation Division  
Energy & Minerals Division  
2040 South Pacheco  
Santa Fe, New Mexico 87505  
Attention: Mrs. Lori Wrotenbury, Director

Pursuant to the provisions of Section 10 of the Unit Agreement for Development and Operation of the Pipeline Deep Unit Area dated April 12, 1973 (No. 14-08-0001-12402), Matador Operating Company as Unit Operator for the Pipeline Deep Unit, respectfully submits for approval this 1998 Plan of Development for the Pipeline Deep Unit Area for the period ending December 31, 1998.

**SUMMARY OF 1997 OPERATIONS**

No wells were drilled or recompleted in 1997. Production for 1997 is summarized below:

WELL NAME	PRODUCING INTERVAL	GAS MMCF	CONDENSATE BBL
Pipeline Deep #1	Middle Morrow	11.438	1351
Pipeline Deep #2	Middle/Upper Morrow	59.454	1223

**PLAN OF DEVELOPMENT FOR 1998**

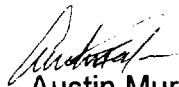
No new wells or recompletions are scheduled.

This plan may be modified or supplemented from time to time with the approval needed, when necessary, to meet changed conditions or to protect the interest of all parties to the Unit Agreement.

Submitted this 9<sup>th</sup> day of April, 1998.

Sincerely,

MATADOR OPERATING COMPANY

  
Austin Murr  
Land Manager



4985

MAR 31 1997

March 28, 1997

Oil Conservation Division  
Energy & Minerals Division  
2040 South Pacheco  
Santa Fe, New Mexico 87505  
Attn: Mr. William J. LeMay, Director

1997 Plan of Development  
Pipeline Deep Unit Area  
Lea County, New Mexico  
Pipeline Prospect (7435)

Gentlemen:

Please find enclosed for your approval two (2) copies of Union's 1997 Plan of Development for the Pipeline Deep Unit.

Should you have any questions, please let me know.

Sincerely,

UNION OIL COMPANY OF CALIFORNIA  
dba Spirit Energy 76

A handwritten signature in cursive script that reads "Linda H. Hicks".

Linda H. Hicks  
Land Advisor/Contracts

LHH/s  
Enclosure

1997 PLAN OF DEVELOPMENT  
PIPELINE DEEP UNIT AREA  
LEA COUNTY, NEW MEXICO

TO: Oil Conservation Division  
Energy & Minerals Division  
2040 South Pacheco  
Santa Fe, New Mexico 87505  
Attn: Mr. William J. LeMay, Director

Union Oil Company of California as Unit Operator for the Pipeline Deep Unit, pursuant to the provisions of Section 10 of the Unit Agreement for Development and Operation of the Pipeline Deep Unit Area dated April 12, 1973 (No. 14-08-0001-8496), respectfully submits for approval this 1997 Plan of Development for the Pipeline Deep Unit Area for the period ending December 31, 1997.

SUMMARY OF 1996 OPERATIONS

Stimulated Middle Morrow in the Pipeline Deep Fed #1 well. Production for 1996 is summarized below:

<u>WELL NO.</u>	<u>1996 PRODUCTION COMPLETED INTERVAL</u>	<u>MMCF + BC</u>
Pipeline Deep #1	Middle Morrow	45.349 + 405
Pipeline Deep #2	Middle/Upper Morrow	47.411 + 1387

PLAN OF DEVELOPMENT FOR 1997

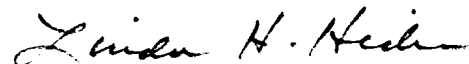
No new wells or recompletions are scheduled.

This plan may be modified or supplemented from time to time with the approval needed, when necessary, to meet changed conditions or to protect the interest of all parties to the Unit Agreement.

Submitted this 28th day of March, 1997.

Sincerely,

UNION OIL COMPANY OF CALIFORNIA



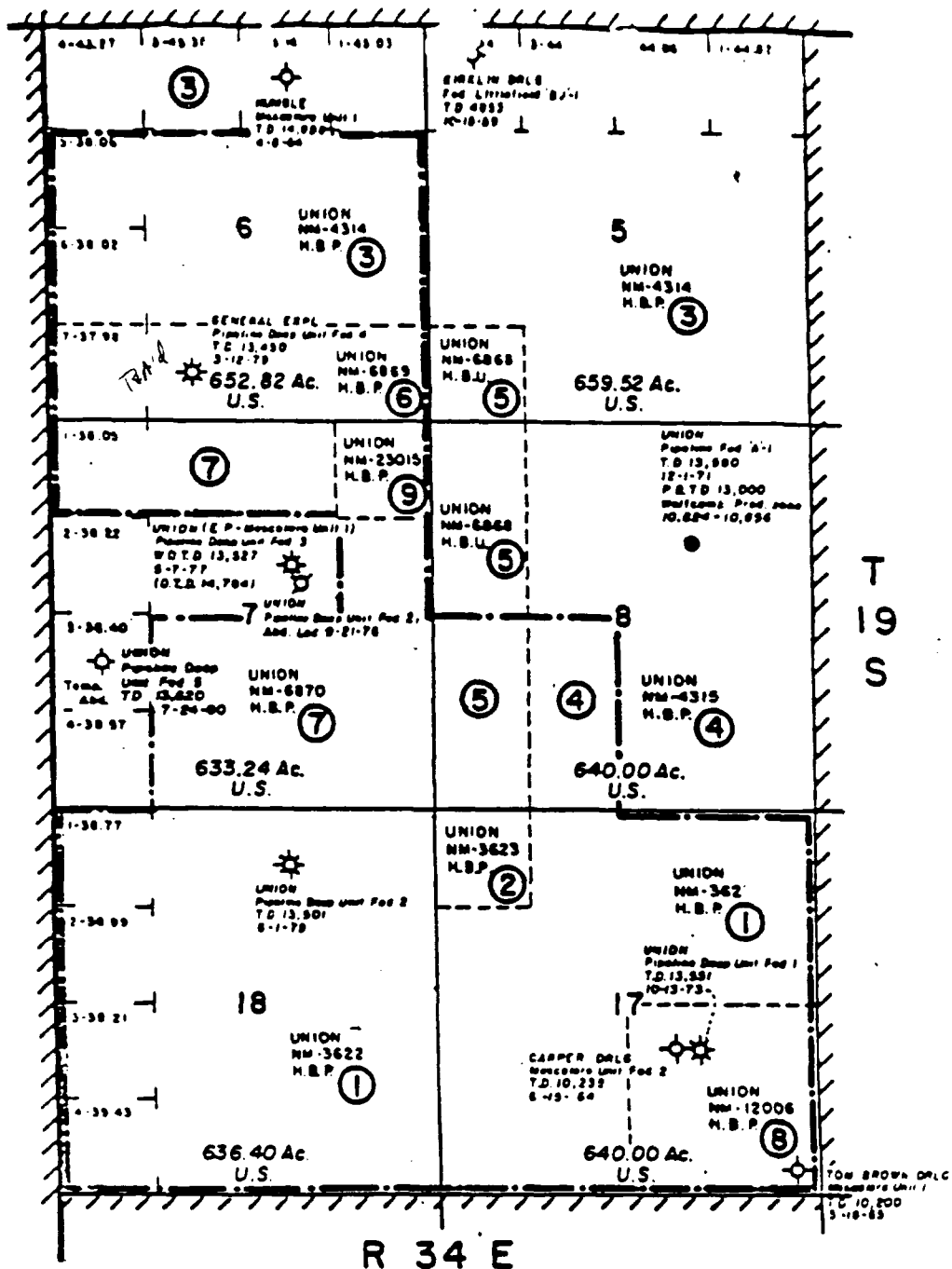
Linda H. Hicks  
Land Advisor/Contracts

LHH/s

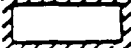

**PIPELINE DEEP UNIT  
2 YEAR PRODUCTION HISTORY  
UNION OIL COMPANY OF CALIFORNIA**

<b>WELL:</b> <b>PROD FORM:</b> <b>STATUS:</b>	<b>PIPELINE DEEP FEDERAL #1</b> Middle Morrow Producing Gas Well	<b>PIPELINE DEEP FEDERAL #2</b> Middle and Upper Morrow Producing Gas Well
---	--	--

DATE	OIL VOL		GAS VOL		WAT VOL		OIL VOL		GAS VOL		WAT VOL	
	PROD	bbls	PROD	Mscf	PROD	bbls	PROD	bbls	PROD	Mscf	PROD	bbls
Jan-95	47		3302		2		146		4726		0	
Feb-95	0		2789		9		116		3616		0	
Mar-95	3		2857		0		155		3159		0	
Apr-95	0		2738		0		104		3110		0	
May-95	143		2150		1		130		2871		0	
Jun-95	54		2392		0		91		2568		3	
Jul-95	25		2364		11		85		2489		0	
Aug-95	60		2394		7		100		2779		0	
Sep-95	53		2499		184		114		3096		0	
Oct-95	11		2143		21		26		3696		0	
Nov-95	8		2378		1		42		3256		0	
Dec-95	0		2701		0		116		2546		0	
ANNUAL	404		30707		236		1225		37912		3	
Jan-96	99		2706		0		116		3382		0	
Feb-96	39		2375		0		142		2889		0	
Mar-96	61		2566		0		107		2889		0	
Apr-96	50		2355		0		82		3909		0	
May-96	38		2346		0		124		3948		0	
Jun-96	28		2127		0		107		4261		0	
Jul-96	5		3701		0		110		4058		0	
Aug-96	0		6147		0		110		4031		0	
Sep-96	2		5541		106		124		4398		0	
Oct-96	3		5403		79		117		4779		0	
Nov-96	0		5087		54		127		4314		0	
Dec-96	80		4995		51		121		4553		7	
ANNUAL	405		45349		290		1387		47411		7	



**EXHIBIT "A" - (REVISED)**  
**LAND OWNERSHIP MAP - PIPELINE DEEP UNIT**  
 (AS CONTRACTED EFFECTIVE SEPTEMBER 1, 1979)  
 LEA COUNTY, NEW MEXICO

-  ORIGINAL UNIT BOUNDARY  
 REVISED UNIT BOUNDARY & PARTICIPATING AREA  
 ② TRACT-NUMBER-INDEX TO EXHIBIT "B"

SCALE: 1" = 2000'

Unocal Corporation  
Oil and Gas Operations  
1004 North Big Spring, Suite 300  
P.O. Box 3100  
Midland, Texas 79702  
Telephone (915) 685-7600

4985



Central U.S. Business Unit

*D-Unit letter*

March 28, 1996

Oil Conservation Division  
Energy & Minerals Division  
P.O. Box 2088  
Santa Fe, New Mexico 87504-2088  
Attn: Mr. William J. LeMay, Director

1996 Plan of Development  
Pipeline Deep Unit Area  
Lea County, New Mexico  
Pipeline Prospect (7435)

Gentlemen:

Please find enclosed for your approval two (2) copies of Union's 1996 Plan of Development for the Pipeline Deep Unit.

Should you have any questions, please let me know.

Sincerely,

UNION OIL COMPANY OF CALIFORNIA

Linda H. Hicks  
Land Advisor/Contracts

LHH/s  
Enclosure



1996 PLAN OF DEVELOPMENT  
PIPELINE DEEP UNIT AREA  
LEA COUNTY, NEW MEXICO

TO: Oil Conservation Division  
Energy & Minerals Division  
P.O. Box 2088  
Santa Fe, New Mexico 87504  
Attn: Mr. William J. LeMay, Director

Union Oil Company of California as Unit Operator for the Pipeline Deep Unit, pursuant to the provisions of Section 10 of the Unit Agreement for Development and Operation of the Pipeline Deep Unit Area dated April 12, 1973 (No. 14-08-0001-12402) respectfully submits for approval this 1996 Plan of Development for the Pipeline Deep Unit Area for the period ending December 31, 1996.

SUMMARY OF 1995 OPERATIONS

No new wells or recompletions in 1995. Production for 1995 is summarized below:

<u>WELL NO.</u>	<u>1995 PRODUCTION COMPLETED INTERVAL</u>	<u>MMCF + BC</u>
Pipeline Deep #1	Middle Morrow	30.707 + 404
Pipeline Deep #2	Middle Morrow	37.912 + 1,225

PLAN OF DEVELOPMENT FOR 1996

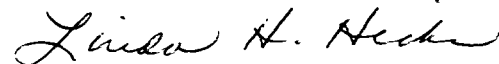
A stimulation on the Pipeline Deep Unit #1 well is planned for 1996.

This plan may be modified or supplemented from time to time with the approval needed, when necessary, to meet changed conditions or to protect the interest of all parties to the Unit Agreement.

Submitted this 28th day of March, 1996.

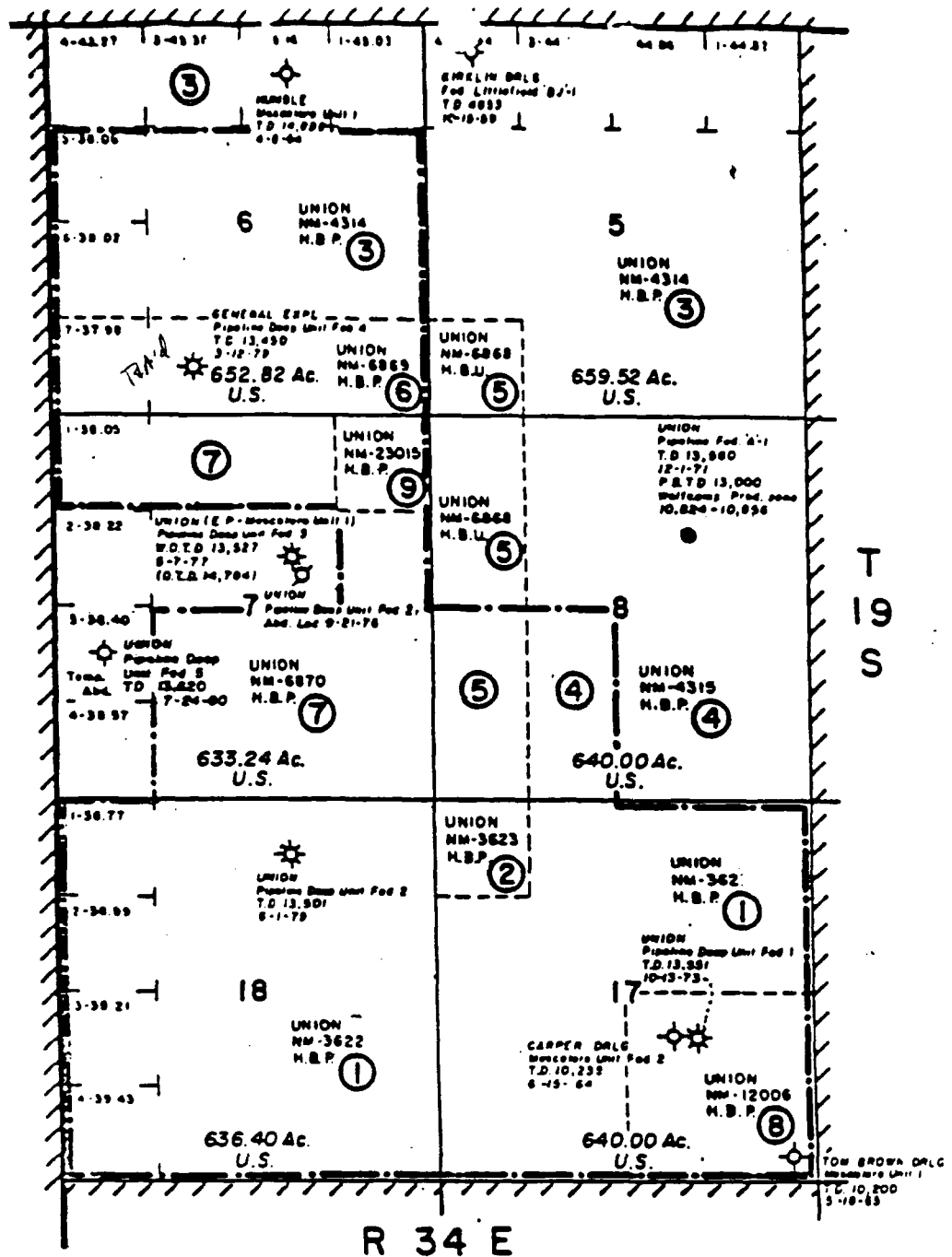
Sincerely,

UNION OIL COMPANY OF CALIFORNIA

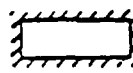



Linda H. Hicks  
Land Advisor/Contracts

LHH/s

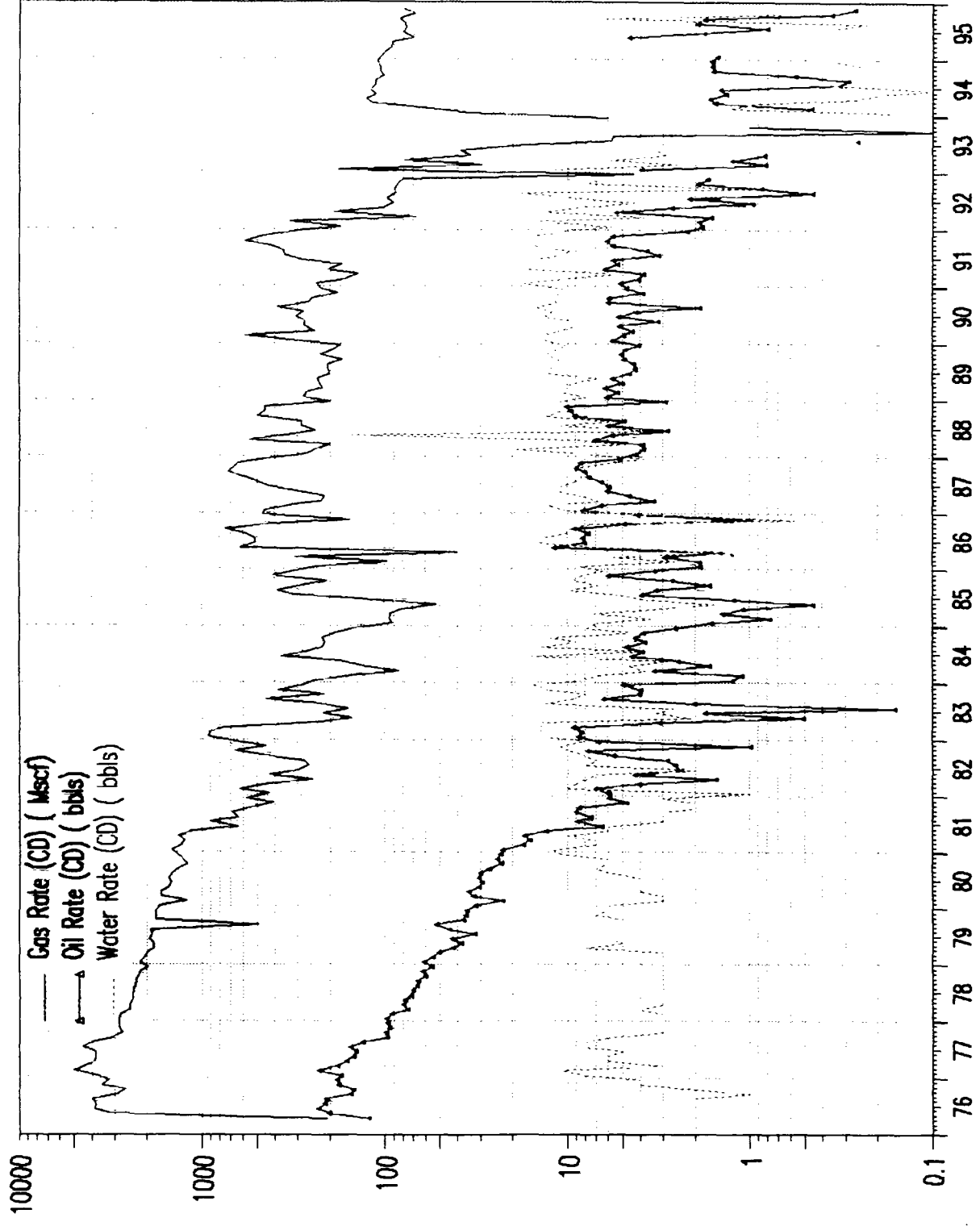


**EXHIBIT "A" - (REVISED)**  
**LAND OWNERSHIP MAP - PIPELINE DEEP UNIT**  
 (AS CONTRACTED EFFECTIVE SEPTEMBER 1, 1979)  
 LEA COUNTY, NEW MEXICO

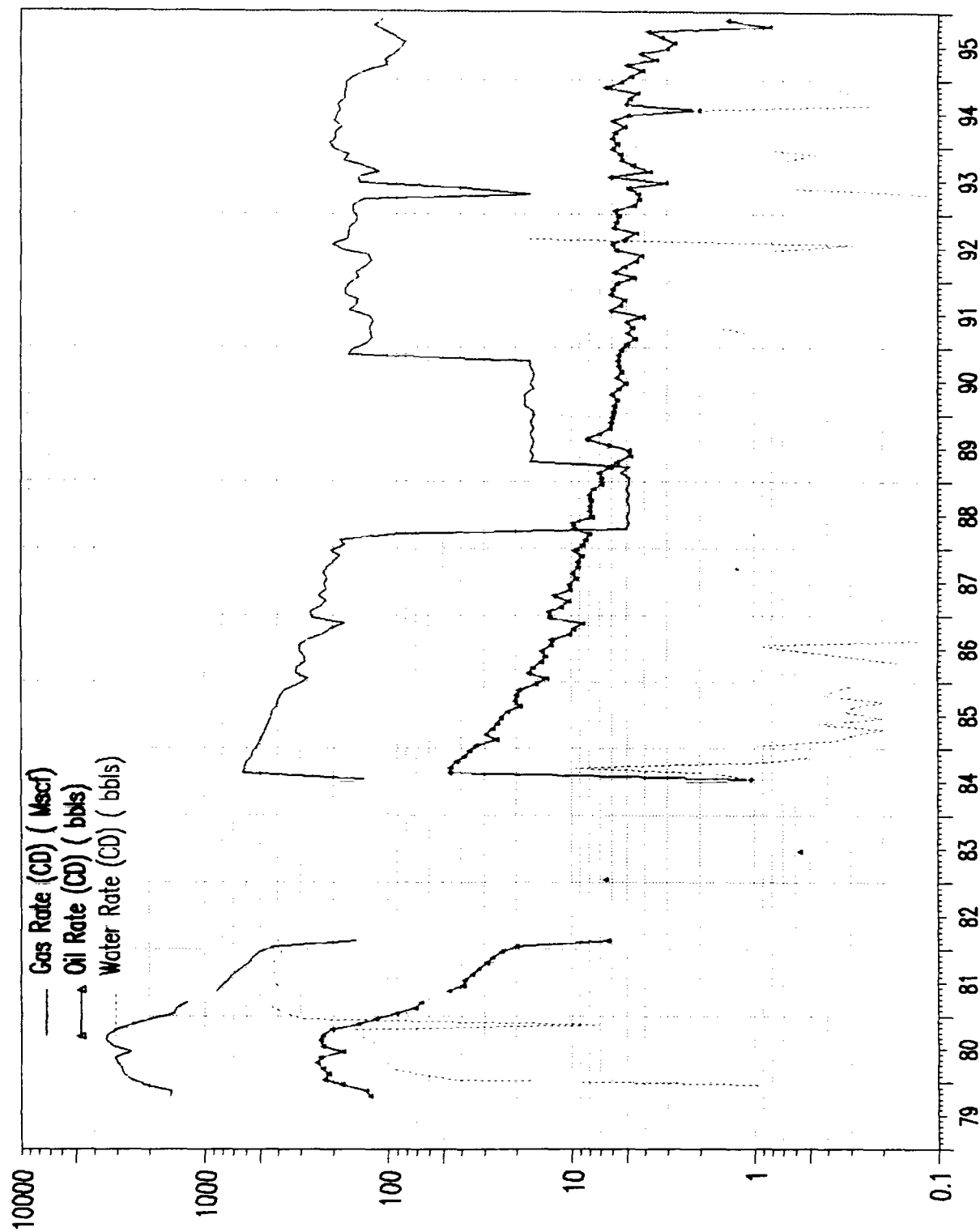
-  ORIGINAL UNIT BOUNDARY  
 REVISED UNIT BOUNDARY & PARTICIPATING AREA  
 ② TRACT-NUMBER-INDEX TO EXHIBIT "B"

SCALE: 1" = 2000'

FIELD : QUAIL RIDGE MORROW  
LEASE : PIPELINE DEEP UN FED #1



FIELD : QUAIL RIDGE MORROW NO  
LEASE : PIPELINE DEEP UN FED #2



OK  
4-3-95

1995 PLAN OF DEVELOPMENT  
PIPELINE DEEP UNIT AREA  
LEA COUNTY, NEW MEXICO

TO: Oil Conservation Division  
Energy & Minerals Division  
P.O. Box 2088  
Santa Fe, New Mexico 87504

Attn: Mr. William J. LeMay, Director

Union Oil Company of California as Unit Operator for the Pipeline Deep Unit, pursuant to the provisions of Section 10 of the Unit Agreement for Development and Operation of the Pipeline Deep Unit Area, dated April 12, 1973 (No. 14-08-0001-8496), respectfully submits for approval this 1995 Plan of Development for the Pipeline Deep Unit Area for the period ending December 31, 1995.

SUMMARY OF 1994 OPERATIONS

No new Unit wells were drilled in 1994. Yearly production for 1994 for each Unit well is shown below:

WELL	COMPLETED INTERVAL	GAS MMCF	CONDENSATE (BBL)
1	Middle Morrow	37.142	380
2	Middle Morrow	67.197	1868

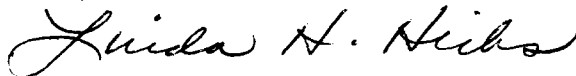
PLAN OF DEVELOPMENT FOR 1995

Union has no plans to drill any new wells or recompleat any existing wells in 1995.

This plan may be modified or supplemented from time to time with the approval needed, when necessary, to meet changed conditions or to protect the interest of all parties to the Unit Agreement.

Submitted this 31st day of March, 1995.

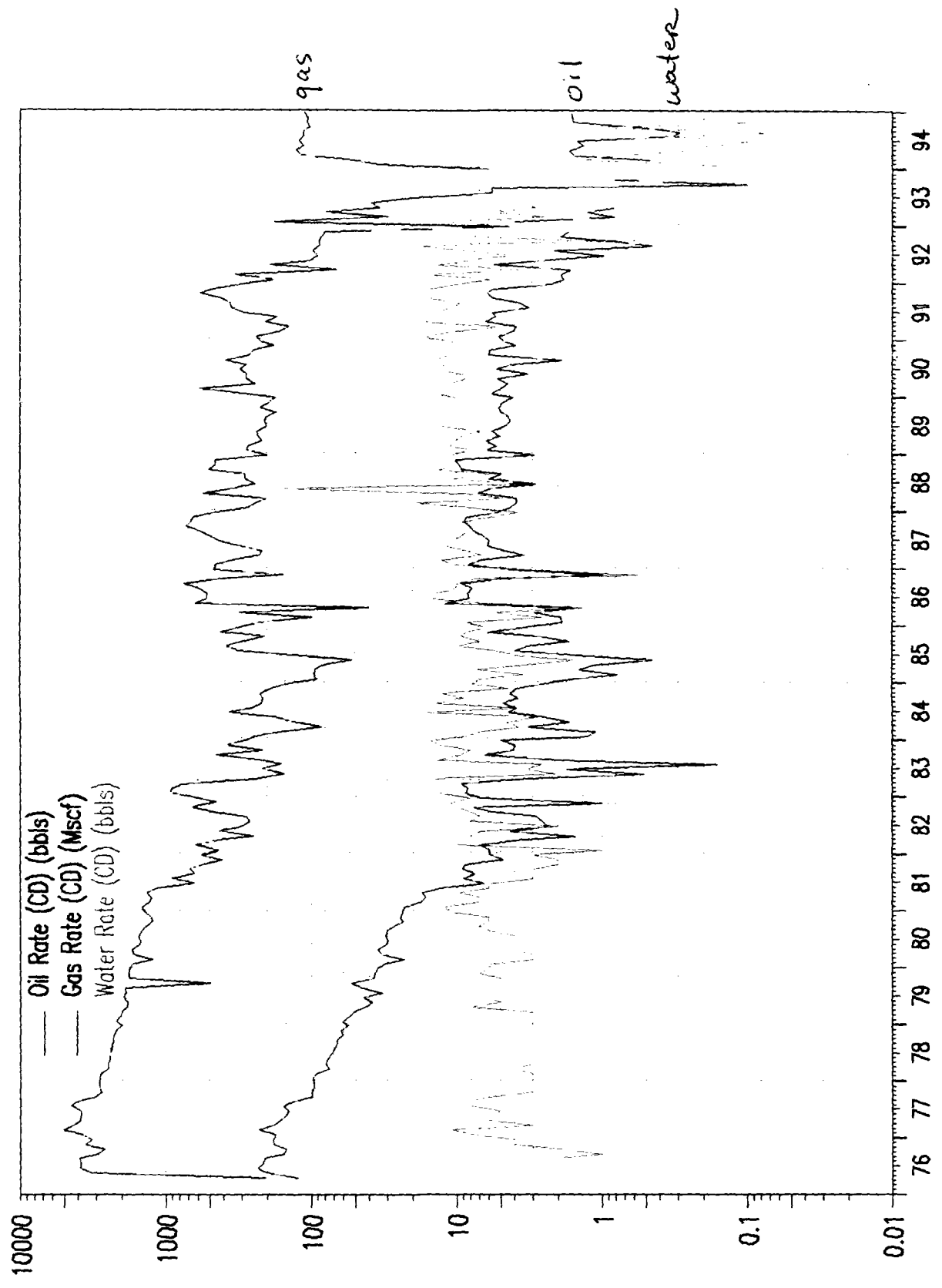
Sincerely,  
UNION OIL COMPANY OF CALIFORNIA



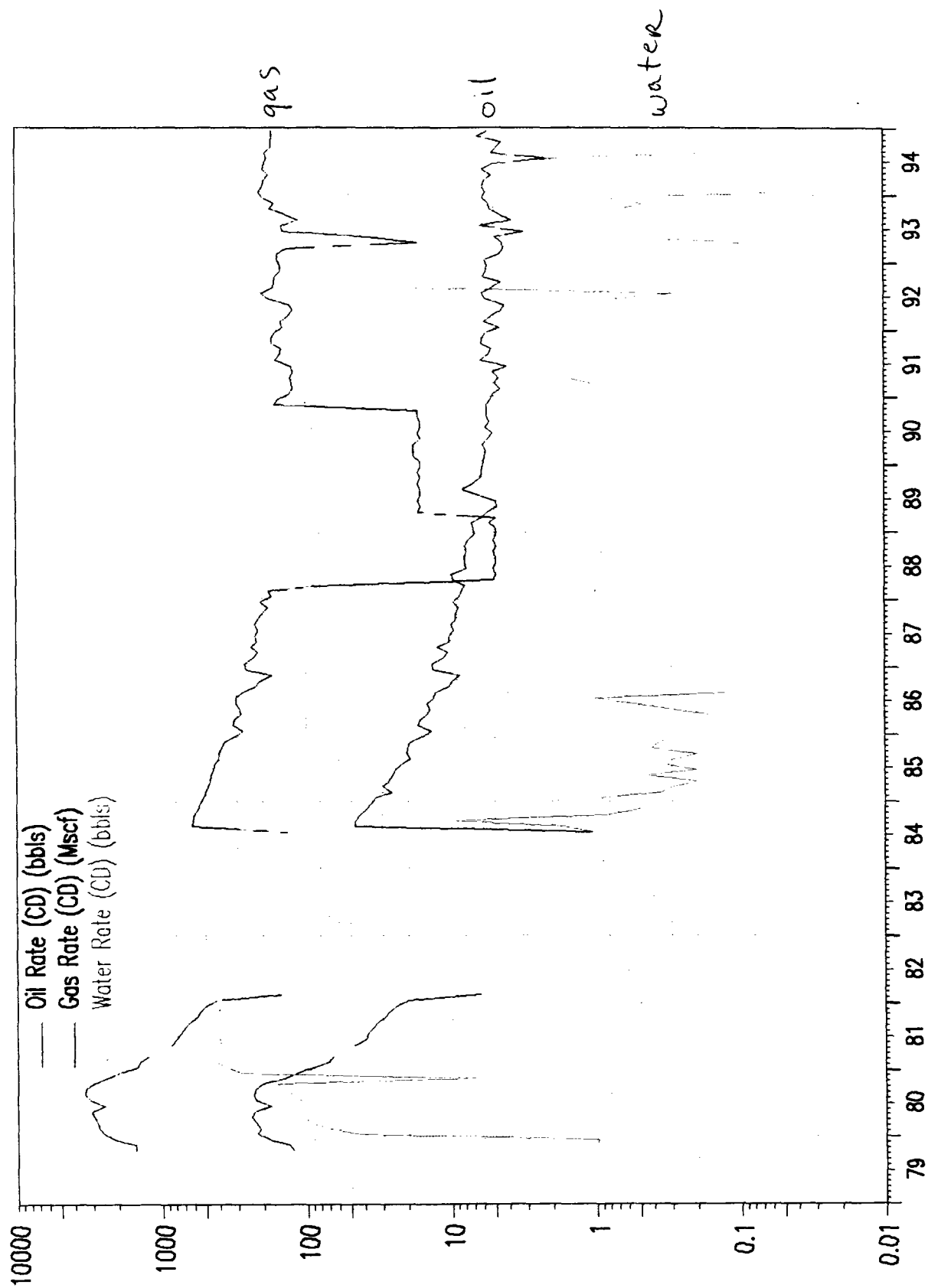
Linda H. Hicks  
Land Advisor/Contracts



FIELD : QUAIL RIDGE MORROW  
LEASE : PIPELINE DEEP UN FED #1



FIELD : QUAIL RIDGE MORROW NO  
LEASE : PIPELINE DEEP UN FED #2





Unocal Energy Resources Division  
Unocal Corporation  
1004 North Big Spring, Suite 300  
P.O. Box 3100  
Midland, Texas 79702  
Telephone (915) 685-7600

#4985



Permian Basin Business Unit

March 31, 1994

MAR 31 1994

Oil Conservation Division  
Energy & Minerals Division  
P. O. Box 2088  
Santa Fe, New Mexico 87504-2088

Attn: Mr. William J. LeMay, Director

1994 Plan of Development  
Pipeline Deep Unit Area  
Lea County, New Mexico  
Pipeline Deep Prospect (7435)

Gentlemen:

Please find enclosed for your approval two (2) copies of Union's 1994 Plan of Development for the Pipeline Deep Unit.

Should you have any questions, please let me know.

Sincerely,

UNION OIL COMPANY OF CALIFORNIA  
dba UNOCAL

Linda H. Hicks  
Land Advisor/Contracts

LHH/jb  
Enclosures

**1994 PLAN OF DEVELOPMENT  
PIPELINE DEEP UNIT AREA  
LEA COUNTY, NEW MEXICO**

TO: Oil Conservation Division  
Energy & Minerals Division  
P. O. Box 2088  
Santa Fe, New Mexico 88201-2088

MAR 31 1994

Attn: Mr. William J. LeMay, Director  
Oil & Gas Division

Union Oil Company of California as Unit Operator for the Pipeline Deep Unit Area, pursuant to the provisions of Section 10 of the Unit Agreement for Development and Operation of the Pipeline Deep Unit Area, dated April 12, 1973 (No. 14-08-0001-8496), respectfully submits for approval this 1994 Plan of Development for the Pipeline Deep Unit Area. This plan is for the period ending December 31, 1994.

SUMMARY OF 1993 OPERATIONS

No new Unit wells were drilled in 1993. Unit well #1 was recompleted to Middle Morrow 12/1/93. Yearly production for 1993 for each Unit well is shown below:

<u>WELL</u>	<u>COMPLETED INTERVAL</u>	<u>GAS MMCF</u>	<u>CONDENSATE (BBL)</u>
1	Middle Morrow	12.192	217
2	Middle Morrow	47.606	1764

PLAN OF DEVELOPMENT FOR 1994

Union has no plans to drill any new wells or recomplete any existing wells in 1994. Only work to be done includes bottomhole pressure measurements.

This plan may be modified or supplemented from time to time with the approval needed, when necessary, to meet changed conditions or to protect the interest of all parties to the Unit Agreement.

Submitted this 31st day of March, 1994.

Sincerely,

UNION OIL COMPANY OF CALIFORNIA

*Linda H. Hicks*

Linda H. Hicks  
Land Advisor/Contracts

DWIGHTS ENERGYDATA, INC.  
GAS WELL HISTORY  
NEW MEXICO GAS SOUTHEAST

RUN DATE: 02/04/94  
Published 1/94  
(#250,025,19S34E17J00PM )

OPERATOR (#748982)	WELL NAME	WELL #
UNION OIL CO OF CAL	PIPELINE DEEP UNIT FEDERAL	000001

LOCATION	STATE	DIST	COUNTY (#025)	LEASE #
17J 19S 34E	NM	002	LEA	70516

API #	FIELD (#8058974)	RESERVOIR
30-025-2447000	QUAIL RIDGE (MORROW) PM	MORROW

TOTAL DEPTH	UPPER PERF	LOWER PERF	GAS GATH	LIQ GATH	GAS GRAV	LIQ GRAV	TEMP GRAD	N-FACTOR
13551	13456	13460	PHIPC	LLANO	0.67	58.0	0.969	0.793

COMP DATE	1ST PROD DATE	LAST PROD DATE	STATUS DATE	STATUS
7310	7604	9308		ACT

CUM THRU LPD GAS/MCF	GAS CUM SINCE DATE	CUM THRU LPD COND/BBLs	COND CUM SINCE DATE
5830231	FPDAT	177553	FPDAT

DWIGHTS ENERGYDATA, INC.  
 UNION OIL CO OF CAL  
 PIPELINE DEEP UNIT FEDERAL

RUN DATE: 02/04/94  
 Published 1/94  
 (#250,025,19S34E17J00PM )

\*\*\* MONTHLY PRODUCTION HISTORY \*\*\*

MONTH	GAS MCF	CUM GAS MCF	COND BBLs	CUM COND BBLs	WATER BBLs	DAYS ON
JAN	9111	5565197	178	173447	409	31
FEB	16311	5581508	139	173586	392	28
MAR	7473	5588981	137	173723	351	30
APR	8321	5597302	157	173880	265	30
MAY	8588	5605890	100	173980	286	-
JUN	9197	5615087	158	174138	401	30
JUL	8624	5623711	131	174269	377	25
AUG	11976	5635687	59	174328	461	-
SEP	7891	5643578	179	174507	344	30
OCT	7741	5651319	183	174690	378	31
NOV	5448	5656767	117	174807	321	-
DEC	6929	5663696	147	174954	328	25
1990	107610	5663696	1685	174954	4313	
JAN	7335	5671031	158	175112	538	31
FEB	4674	5675705	115	175227	302	20
MAR	4362	5680067	119	175346	166	16
APR	6171	5686238	190	175536	490	30
MAY	5341	5691579	166	175702	484	26
JUN	8520	5700099	169	175871	455	30
JUL	10975	5711074	99	175970	340	31
AUG	11098	5722172	114	176084	299	22
SEP	12659	5734831	169	176253	460	30
OCT	17883	5752714	188	176441	514	31
NOV	13941	5766655	170	176611	477	30
DEC	9307	5775962	69	176680	314	25
1991	112266	5775962	1726	176680	4839	
JAN	5478	5781440	57	176737	178	19
FEB	9632	5791072	55	176792	445	28
MAR	2097	5793169	51	176843	117	31
APR	5682	5798851	164	177007	410	28
MAY	3168	5802019	83	177090	268	22
JUN	2688	5804707	29	177119	129	18
JUL	3026	5807733	66	177185	275	23
AUG	2716	5810449	14	177199	558	15
SEP	2648	5813097	26	177225	30	17
OCT	2629	5815726	60	177285	238	20
NOV	2399	5818125	51	177336	201	23
DEC	135	5818260	0	177336	0	2
1992	42298	5818260	656	177336	2849	
JAN	5544	5823804	122	177458	362	29
FEB	828	5824632	23	177481	70	5
MAR	2423	5827055	39	177520	180	22
APR	1021	5828076	25	177545	86	13
MAY	1198	5829274	0	177545	101	15
JUN	603	5829877	0	177545	135	7
JUL	178	5830055	8	177553	0	4
AUG	176	5830231	0	177553	25	3
1993	11971	5830231	217	177553	959	

OPERATOR (#748982)	WELL NAME	WELL #
UNION OIL CO OF CAL	PIPELINE DEEP UNIT FEDERAL	000002

LOCATION	STATE	DIST	COUNTY (#025)	LEASE #
18B 19S 34E	NM	002	LEA	82685

API #	FIELD (#8059024)	RESERVOIR
30-025-2623500	QUAIL RIDGE NORTH (MORROW) PM	MORROW

TOTAL DEPTH	UPPER PERF	LOWER PERF	GAS GATH	LIQ GATH	GAS GRAV	LIQ GRAV	TEMP GRAD	N-FACTOR
13501	13388	13402	LLANO	SCURP	0.66	53.2	0.969	0.943

COMP DATE	1ST PROD DATE	LAST PROD DATE	STATUS DATE	STATUS
7906	7910	9308		ACT

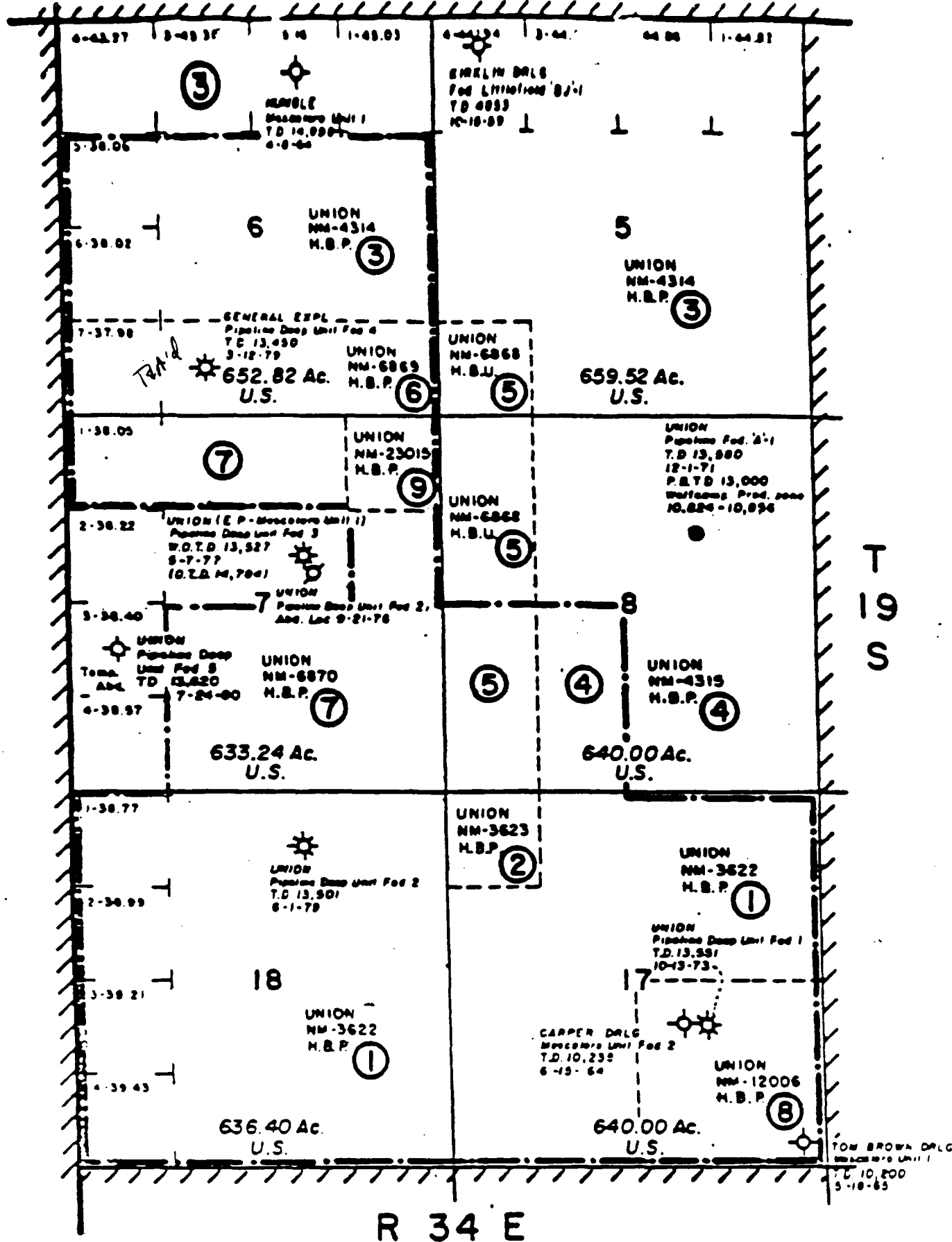
CUM THRU LPD GAS/MCF	GAS CUM SINCE DATE	CUM THRU LPD COND/BBLs	COND CUM SINCE DATE
2105946	FPDAT	140781	FPDAT

DWIGHTS ENERGYDATA, INC.  
 UNION OIL CO OF CAL  
 PIPELINE DEEP UNIT FEDERAL

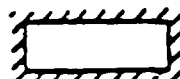
RUN DATE: 02/04/94  
 Published 1/94  
 (#250,025,19S34E18B00PM )

\*\*\* MONTHLY PRODUCTION HISTORY \*\*\*

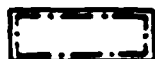
MONTH	GAS MCF	CUM GAS MCF	COND BBLs	CUM COND BBLs	WATER BBLs	DAYS ON
JAN	500	1954312	181	134171	0	31
FEB	500	1954812	163	134334	0	28
MAR	554	1955366	174	134508	0	31
APR	536	1955902	179	134687	0	30
MAY	500	1956402	170	134857	0	-
JUN	500	1956902	152	135009	0	30
JUL	500	1957402	176	135185	0	31
AUG	500	1957902	166	135351	0	-
SEP	500	1958402	166	135517	0	30
OCT	517	1958919	172	135689	0	31
NOV	4921	1963840	166	135855	0	30
DEC	4835	1968675	165	136020	0	31
1990	14863	1968675	2030	136020	0	
JAN	4044	1972719	156	136176	0	31
FEB	3437	1976156	126	136302	0	28
MAR	3853	1980009	153	136455	33	31
APR	3778	1983787	139	136594	47	30
MAY	3745	1987532	156	136750	0	31
JUN	3747	1991279	122	136872	0	30
JUL	4986	1996265	190	137062	0	31
AUG	4623	2000888	168	137230	0	31
SEP	4354	2005242	154	137384	0	30
OCT	5264	2010506	189	137573	0	31
NOV	5107	2015613	177	137750	0	30
DEC	5003	2020616	175	137925	0	30
1991	51941	2020616	1905	137925	80	
JAN	4480	2025096	141	138066	0	31
FEB	4304	2029400	168	138234	0	29
MAR	4060	2033460	159	138393	0	31
APR	3674	2037134	133	138526	0	30
MAY	3940	2041074	129	138655	0	31
JUN	5250	2046324	170	138825	25	30
JUL	6163	2052487	186	139011	9	31
AUG	0	2052487	0	139011	0	0
SEP	4885	2057372	133	139144	0	30
OCT	4990	2062362	181	139325	0	31
NOV	4443	2066805	170	139495	0	30
DEC	4550	2071355	171	139666	0	31
1992	50739	2071355	1741	139666	34	
JAN	4807	2076162	178	139844	0	31
FEB	4341	2080503	127	139971	18	28
MAR	4128	2084631	132	140103	0	31
APR	4145	2088776	129	140232	3	30
MAY	4985	2093761	151	140383	19	30
JUN	4273	2098034	92	140475	0	29
JUL	4471	2102505	190	140665	0	31
AUG	3441	2105946	116	140781	0	31
1993	34591	2105946	1115	140781	40	



**EXHIBIT "A" - (REVISED)**  
**LAND OWNERSHIP MAP - PIPELINE DEEP UNIT**  
 (AS CONTRACTED EFFECTIVE SEPTEMBER 1, 1979)  
 LEA COUNTY, NEW MEXICO



ORIGINAL UNIT BOUNDARY



REVISED UNIT BOUNDARY & PARTICIPATING AREA



TRACT NUMBER - INDEX TO EXHIBIT "B"

SCALE: 1" = 2000'



**State of New Mexico**  
**Commissioner of Public Lands**

310 OLD SANTA FE TRAIL P.O. BOX 1148

SANTA FE, NEW MEXICO 87504-1148

**RAY POWELL, M.S., D.V.M.**  
**COMMISSIONER**

(505) 827-5760  
FAX (505) 827-5766

#5060

RECEIVED  
DIVISION  
MAR 1 1995 8 52

March 1, 1995

Sahara Operating Company  
P.O. Box 10280  
Midland, Texas 79702

Attention: Ms. Celeste G. Dale

Re: Resignation/Designation of Successor Unit Operator  
North El Mar Unit  
Lea County, New Mexico

Dear Ms. Dale:

This office is in receipt of a resignation/designation of successor unit operator, wherein Conoco Inc. has resigned as unit operator of the North El Mar Unit and designated Sahara Operating Company as the successor unit operator.

The Commissioner of Public Lands has this date approved the resignation of Conoco Inc. and the designation of Sahara Operating Company as the successor unit operator of this unit. This change in operators is effective July 1, 1994. In accordance with this approval, Sahara Operating Company is now responsible for all operations and the reporting of all production from the unit. Our approval is subject to like approval by the Bureau of Land Management.



Sahara Operating Company

Page 2

March 1, 1995

If you have any questions, or if we may be of further help, please contact Pete Martinez at (505) 827-5791.

Very truly yours,

JAY POWELL, M.S., D.V.M.  
COMMISSIONER OF PUBLIC LANDS

BY: 

JAMES B. LEWIS, Director  
Oil/Gas and Minerals Division  
(505) 827-5744

RP/JBL/cpm

Enclosure

cc: Reader File

Conoco Inc.

OCD--Roy Johnson

TRD

BLM--Roswell

**Unocal North American  
Oil & Gas Division**  
Unocal Corporation  
1004 North Big Spring Street, Suite 300  
P.O. Box 3100  
Midland, Texas 79702  
Telephone (915) 684-8231

4985



Southwestern Region

March 23, 1993

Oil Conservation Division  
Energy & Minerals Division  
P. O. Box 2088  
Santa Fe, New Mexico 87504-2088

Attn: Mr. William J. LeMay, Director

1993 Plan of Development  
Pipeline Deep Unit Area  
Lea County, New Mexico  
Pipeline Deep Prospect (7435)

Gentlemen:

Please find enclosed for your approval two (2) copies of Union's 1993 Plan of Development for the Pipeline Deep Unit.

Should you have any questions, please let me know.

Sincerely,

UNION OIL COMPANY OF CALIFORNIA  
dba UNOCAL

A handwritten signature in cursive script that reads "Linda H. Hicks".

Linda H. Hicks  
Supervisor of Contracts

LHH/jb  
Enclosures

**1993 PLAN OF DEVELOPMENT  
PIPELINE DEEP UNIT AREA  
LEA COUNTY, NEW MEXICO**

TO: Oil Conservation Division  
Energy & Minerals Division  
P. O. Box 2088  
Santa Fe, New Mexico 88201-2088

Attn: Mr. William J. LeMay, Director  
Oil & Gas Division

Union Oil Company of California as Unit Operator for the Pipeline Deep Unit Area, pursuant to the provisions of Section 10 of the Unit Agreement for Development and Operation of the Pipeline Deep Unit Area, dated April 12, 1973 (No. 14-08-0001-8496), respectfully submits for approval this 1993 Plan of Development for the Pipeline Deep Unit Area. This plan is for the period ending December 31, 1993.

SUMMARY OF 1992 OPERATIONS

No new Unit wells were drilled in 1992. Yearly production for 1992 for each Unit well is shown below:

<u>WELL</u>	<u>COMPLETED INTERVAL</u>	<u>GAS MMCF</u>	<u>CONDENSATE (BBL)</u>	<u>CURRENT TESTS MCFD + BCPD</u>
1	Lower Morrow	42.063	656	179 + 4
2	Middle Morrow	55.874	1898	155 + 5.7

PLAN OF DEVELOPMENT FOR 1993

Union has no plans to drill any new wells or recompleate any existing wells in 1993.

This plan may be modified or supplemented from time to time with the approval needed, when necessary, to meet changed conditions or to protect the interest of all parties to the Unit Agreement.

Submitted this 23rd day of March, 1993.

Sincerely,

UNION OIL COMPANY OF CALIFORNIA

*Linda H. Hicks*

Linda H. Hicks  
Supervisor of Contracts

LHH/jb

HICKS/POPIPELINE

**1993 PLAN OF DEVELOPMENT  
PIPELINE DEEP UNIT AREA  
LEA COUNTY, NEW MEXICO**

TO: Oil Conservation Division  
Energy & Minerals Division  
P. O. Box 2088  
Santa Fe, New Mexico 88201-2088

Attn: Mr. William J. LeMay, Director  
Oil & Gas Division

Union Oil Company of California as Unit Operator for the Pipeline Deep Unit Area, pursuant to the provisions of Section 10 of the Unit Agreement for Development and Operation of the Pipeline Deep Unit Area, dated April 12, 1973 (No. 14-08-0001-8496), respectfully submits for approval this 1993 Plan of Development for the Pipeline Deep Unit Area. This plan is for the period ending December 31, 1993.

SUMMARY OF 1992 OPERATIONS

No new Unit wells were drilled in 1992. Yearly production for 1992 for each Unit well is shown below:

<u>WELL</u>	<u>COMPLETED INTERVAL</u>	<u>GAS MMCF</u>	<u>CONDENSATE (BBL)</u>	<u>CURRENT TESTS MCFD + BCPD</u>
1	Lower Morrow	42.063	656	179 + 4
2	Middle Morrow	55.874	1898	155 + 5.7

PLAN OF DEVELOPMENT FOR 1993

Union has no plans to drill any new wells or recompleat any existing wells in 1993.

This plan may be modified or supplemented from time to time with the approval needed, when necessary, to meet changed conditions or to protect the interest of all parties to the Unit Agreement.

Submitted this 23rd day of March, 1993.

Sincerely,

UNION OIL COMPANY OF CALIFORNIA

*Linda H. Hicks*

Linda H. Hicks  
Supervisor of Contracts

LHH/jb

HICKS/PIPELINE

UNION OIL CO OF CAL

PIPELINE DEEP UNIT FEDERAL

WELL#1

Ident. #	State	Dist	County	Location
19S34E17J00PM	NM(30)	2	025 LEA	17J 19S 34E

API #	Field (#8058974 )	Reservoir
30-025-24470	QUAIL RIDGE (MORROW)	MORROW

Month	Oil bbls	Cum Oil bbls	Gas mcf	Cum Gas mcf	Water bbls	No.of Wells
January	57	176737	5478	5781440	178	1
February	55	176792	9632	5791072	445	1
March	51	176843	2097	5793169	117	1
April	164	177007	5682	5798851	410	1
May	83	177090	3168	5802019	268	1
June	29	177119	2688	5804707	129	1
July	66	177185	3026	5807733	275	1
August	14	177199	2616	5810349	558	1
September	26	177225	2648	5812997	30	1
October	60	177285	2629	5815626	238	1
November	51	177336	2399	5818025	51	1
December	0	177336	<del>135</del>	5818025	0	0
Total 1992	656	177336	<del>42063</del> 42118	5818025	2699	1

UNION OIL CO OF CAL

PIPELINE DEEP UNIT FEDERAL

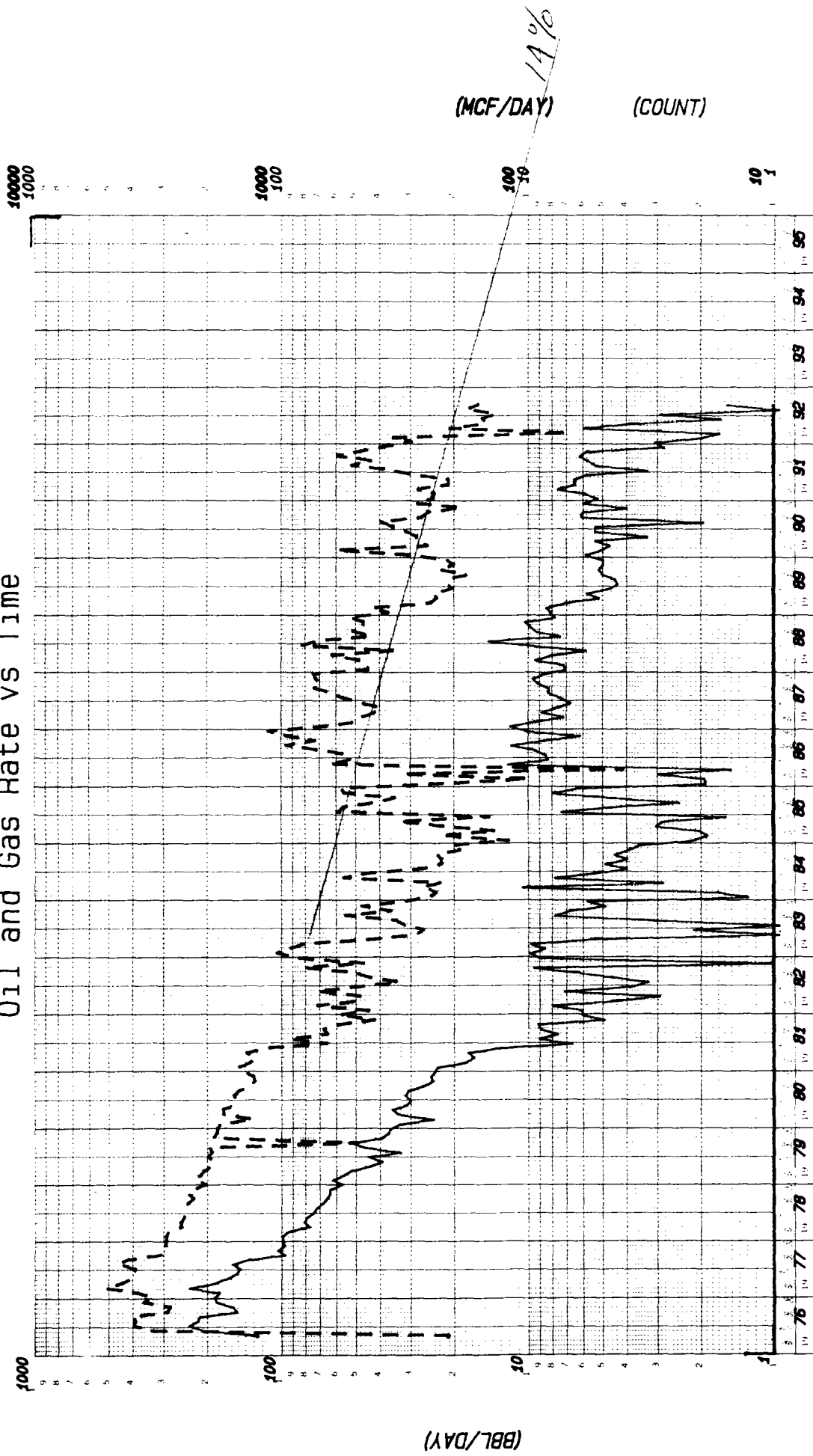
WELL#2

State	Dist	County	Location
NM(30)	2	025 LEA	18B 19S 34E


API #	Field (#8059024 )	Reservoir
30-025-26235	QUAIL RIDGE NORTH (MORROW)	MORROW

Month	Oil bbls	Cum Oil bbls	Gas mcf	Cum Gas mcf	Water bbls	No.of Wells
January	141	138066	4480	2025096	0	1
February	168	138234	4304	2029400	0	1
March	159	138393	4060	2033460	0	1
April	133	138526	3674	2037134	0	1
May	129	138655	3940	2041074	0	1
June	170	138825	5250	2046324	25	1
July	186	139011	6163	2052487	9	1
August	157	139168	5135	2057622	558	1
September	133	139301	4885	2062507	0	1
October	181	139482	4990	2067497	29	1
November	170	139652	4443	2071940	0	1
December	171	139823	<del>4550</del>	2071940	0	1
Total 1992	1898	139823	<del>51324</del> 55874	2071940	621	1

# Oil and Gas Rate vs Time

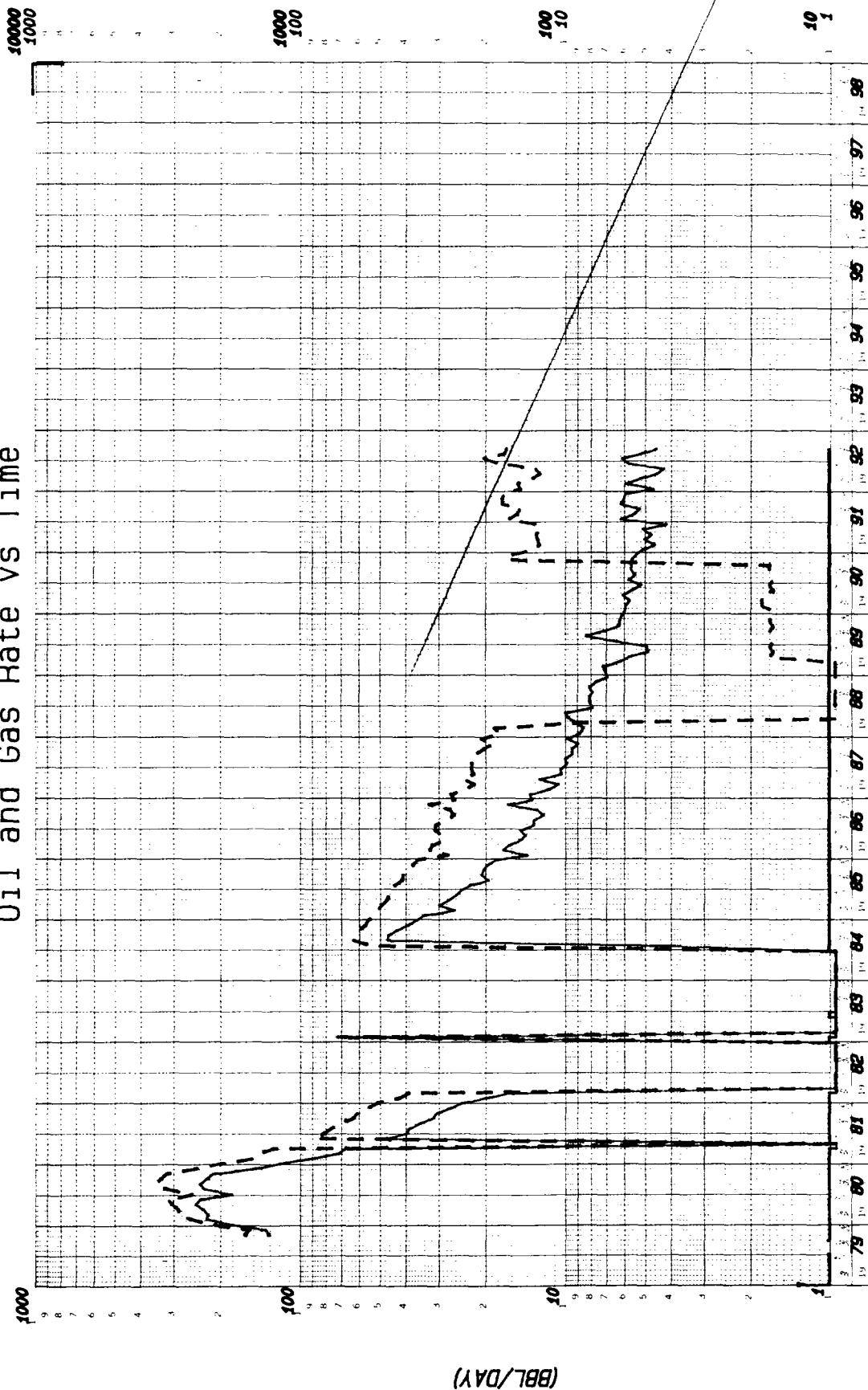


LEGEND	
WELLS	—
OIL	—
GAS	- - -

UNOCAL 		ANDREWS DISTRICT	
Lease:	PIPELINE DEEP UNIT FEDERAL		
Field:	QUAIL RIDGE (MORROW) #1		
County:	LEA	NM	
Operator:	UNION OIL CO OF CAL		
Retrieval Code:	250, 025, 19534E17J00PM		

PM  
Date: 01-22-93  
Cumulative Bo : 177225  
Cumulative Mcf: 5812997

# Oil and Gas Rate vs Time



LEGEND	
WELLS	—
OIL	—
GAS	- - -

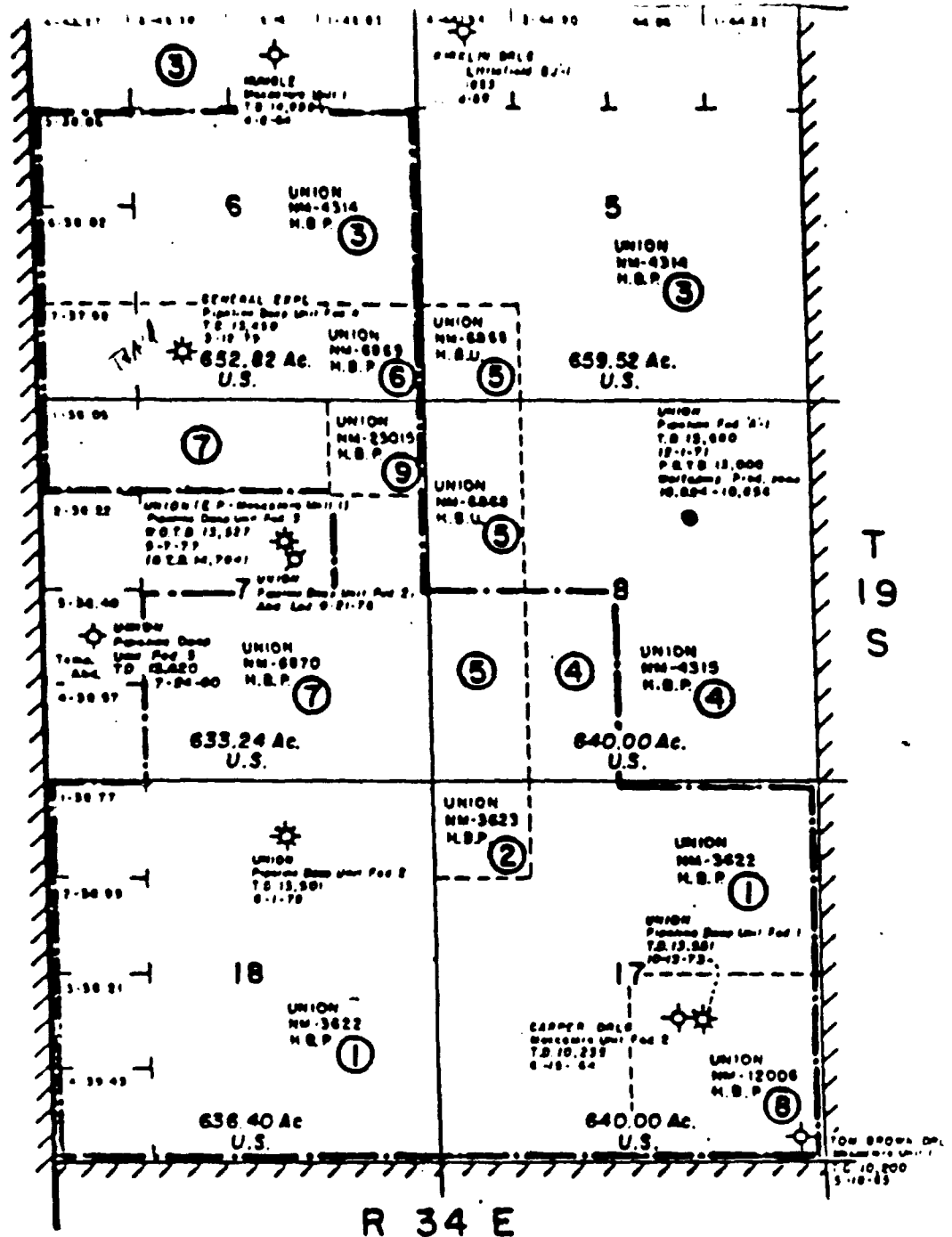
UNOCAL (75)		ANDREWS DISTRICT
Lease:	PIPELINE DEEP UNIT FEDERAL	
Field:	GUAIL RIDGE NORTH (MORROW)	
County:	LEA	NM
Operator:	UNION OIL CO OF CAL	
Retrieval Code:	250, 025, 19S34E18B00PM	

PM

Date: 01-22-93

Cumulative Bo : 139301

Cumulative Mcf: 2062507



**EXHIBIT "A" - (REVISED)**  
**LAND OWNERSHIP MAP - PIPELINE DEEP UNIT**  
 (AS CONTRACTED EFFECTIVE SEPTEMBER 1, 1979)  
 LEA COUNTY, NEW MEXICO

- ② ORIGINAL UNIT BOUNDARY
- ② REVISED UNIT BOUNDARY & PARTICIPATING AREA
- ② TRACT-NUMBER-INDEX TO EXHIBIT "B"

SCALE: 1" = 2000'



**Unocal North American  
Oil & Gas Division**

Unocal Corporation  
1004 North Big Spring Street, Suite 300  
P.O. Box 3100  
Midland, Texas 79702  
Telephone (915) 684-8281

#4985

UN DIVISION

RECEIVED

**UNOCAL** 

'92 MAR 31 PM 9 53

Southwestern Region

March 23, 1992

Oil Conservation Division  
Energy & Minerals Division  
P. O. Box 2088  
Santa Fe, New Mexico 87504-2088

Attn: Mr. William J. LeMay, Director

1992 Plan of Development  
Pipeline Deep Unit Area  
Lea County, New Mexico  
Pipeline Deep Prospect (7435)

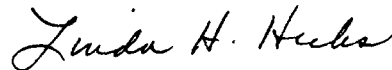
Gentlemen:

Please find enclosed for your approval two (2) copies of Union's 1992 Plan of Development for the Pipeline Deep Unit.

Should you have any questions, please let me know.

Sincerely,

UNION OIL COMPANY OF CALIFORNIA  
dba UNOCAL



Linda H. Hicks  
Supervisor of Contracts

LHH/jb  
Enclosures

**1992 PLAN OF DEVELOPMENT  
PIPELINE DEEP UNIT AREA  
LEA COUNTY, NEW MEXICO**

TO: Oil Conservation Division  
Energy & Minerals Division  
P. O. Box 2088  
Santa Fe, New Mexico 88201-2088

Attn: Mr. William J. LeMay, Director  
Oil & Gas Division

Union Oil Company of California as Unit Operator for the Pipeline Deep Unit Area, pursuant to the provisions of Section 10 of the Unit Agreement for Development and Operation of the Pipeline Deep Unit Area, dated April 12, 1973 (No. 14-08-0001-8496), respectfully submits for approval this 1992 Plan of Development for the Pipeline Deep Unit Area. This plan is for the period ending December 31, 1992.

SUMMARY OF 1991 OPERATIONS

No new Unit wells were drilled in 1991. Yearly production for 1991 for each Unit well is shown below:

<u>WELL</u>	<u>COMPLETED INTERVAL</u>	<u>GAS MMCF</u>	<u>CONDENSATE (BBL)</u>	<u>CURRENT TESTS MCFD + BCPD</u>
1	Lower Morrow	112.266	1726	300 + 2
2	Middle Morrow	51.941	1905	161 + 6

PLAN OF DEVELOPMENT FOR 1992

Union has no plans to drill any new wells or recompleate any existing wells in 1992.

This plan may be modified or supplemented from time to time with the approval needed, when necessary, to meet changed conditions or to protect the interest of all parties to the Unit Agreement.

Submitted this 24 day of March, 1992.

Sincerely,

UNION OIL COMPANY OF CALIFORNIA

*Linda H. Hicks*

Linda H. Hicks  
Supervisor of Contracts

LHH/jb

HICKS/POPIPELINE

**(COUNT)**

**Mo**

**Date: 02-14-92**

**Cumulative Bo : 175970**

Cumulative Mcf: 5711074

UNOCAL

76

**ANDREWS  
DISTRICT**

**Losses:** PIPELINE DEEP UNIT FEDERAL #1

**Field:** QUAIL RIDGE (MORRISON)

County: LEA NM

**Operator:** UNION OIL CO OF CAL

Retrieval Code: 250, 025, 19534E17J00PM

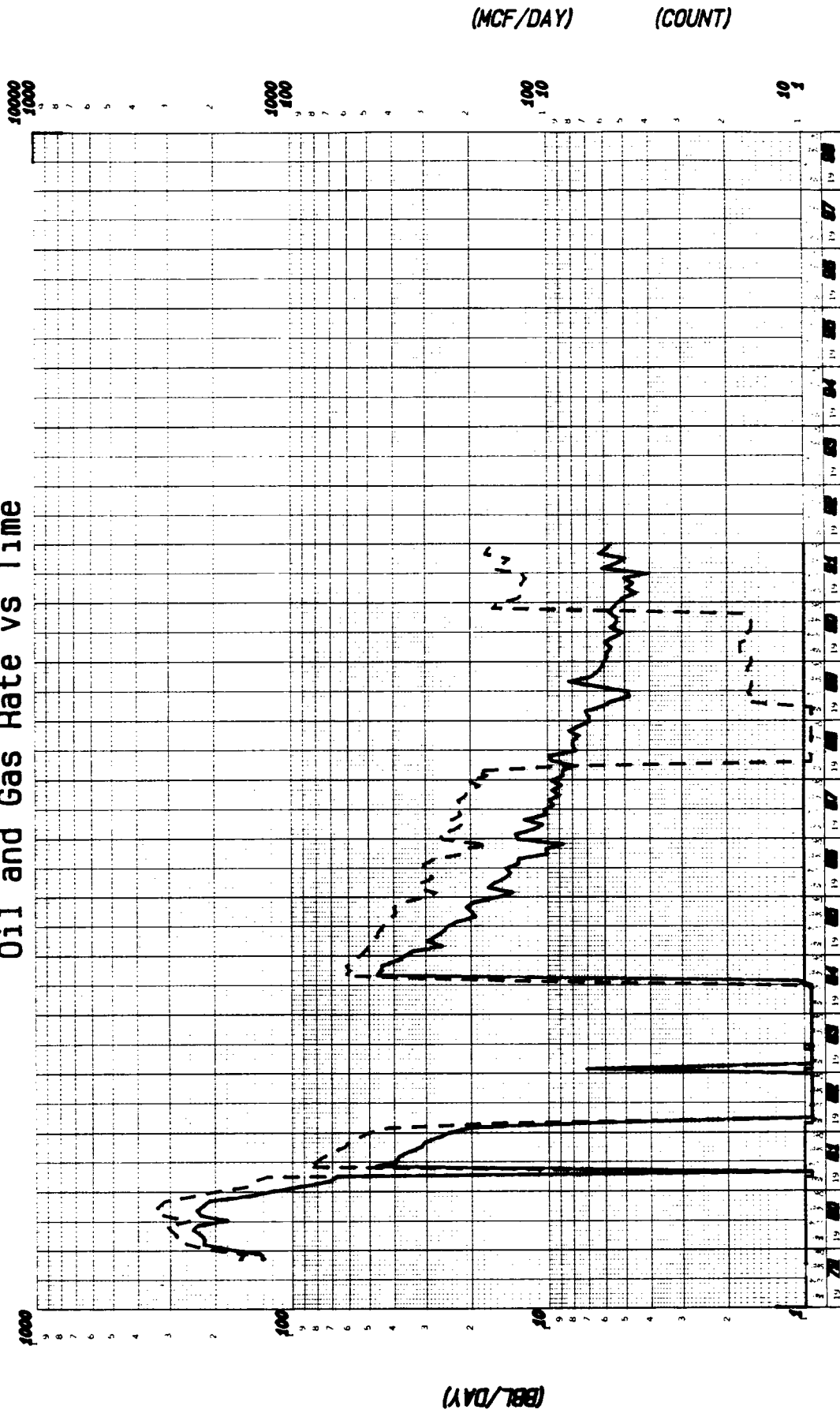
## LEGEND

**WELLS.**

# OIL

**SVS**

# Oil and Gas Rate vs Time



UNOCAL		ANDREWS DISTRICT	
Lease:	PIPELINE DEEP UNIT FEDERAL #2		
Field:	QUAIL RIDGE NORTH (MORROW)		
County:	LEA	NM	
Operator:	UNION OIL CO OF CAL		
Retrieval Code:	250, 025, 19S34E18N00PM		

LEGEND	
WELLS	—
OIL	- - -
GAS	...

Date: 02-17-92  
 Cumulative Bo : 197925  
 Cumulative Mcf: 2020616  
 PM



Unocal Oil & Gas Division  
Unocal Corporation  
1004 North Big Spring Street, Suite 300  
P.O. Box 3100  
Midland, Texas 79702  
Telephone (915) 684-8231

#4985

**UNOCAL** 76

OK'd 3-6-91

Southwestern Region

March 1, 1991

Oil Conservation Division  
Energy and Minerals Division  
P. O. Box 2088  
Roswell, New Mexico 87504-2088

Attn: Mr. William J. LeMay,  
Director

RE: 1991 Plan of Development  
Pipeline Deep Unit  
Lea County, New Mexico  
Pipeline Prospect (7729)

Gentlemen:

Please find enclosed for your approval two copies of Union's 1991 Plan of Development for the Pipeline Deep Unit.

Should you have any questions, please let me know.

Sincerely,

UNION OIL COMPANY OF CALIFORNIA  
dba UNOCAL

*Linda H. Hicks*

Linda H. Hicks  
Supervisor of Contracts

LHH/jb  
Enclosures

1991 PLAN OF DEVELOPMENT  
PIPELINE DEEP UNIT AREA  
LEA COUNTY, NEW MEXICO

TO: Oil Conservation Division  
Energy and Minerals Division  
P. O. Box 2088  
Roswell, New Mexico 87504-2088

Attn: Mr. William J. LeMay,  
Director

Union Oil Company of California as Unit Operator for the Pipeline Deep Unit Area, pursuant to the provisions of Section 10 of the Unit Agreement for Development and Operation of the Pipeline Deep Unit Area, dated April 12, 1973, (No. 14-08-0001-12402), respectfully submits for approval this 1991 Plan of Development and Operation for the Pipeline Deep Unit Area for the period ending December 31, 1991.

SUMMARY OF 1990 OPERATIONS

No new Unit wells were drilled in 1990. Yearly production for 1990 for each Unit well is shown below:

<u>WELL</u>	<u>COMPLETED INTERVAL</u>	<u>GAS MMCF</u>	<u>CONDENSATE (BBL)</u>	<u>CURRENT TESTS MCFD + BCPD</u>
1	Lower Morrow	107.6	1685	182 + 5
2	Middle Morrow	14.9	2030	164 + 5

PLAN OF DEVELOPMENT FOR 1991

Union has no plans to drill any new wells or recompleate any existing wells in 1991.

This plan may be modified or supplemented from time to time with the approval needed, when necessary, to meet changed conditions or to protect the interest of all parties to the Unit Agreement.

Submitted this 1st day of march, 1991.

Sincerely,

UNION OIL COMPANY OF CALIFORNIA

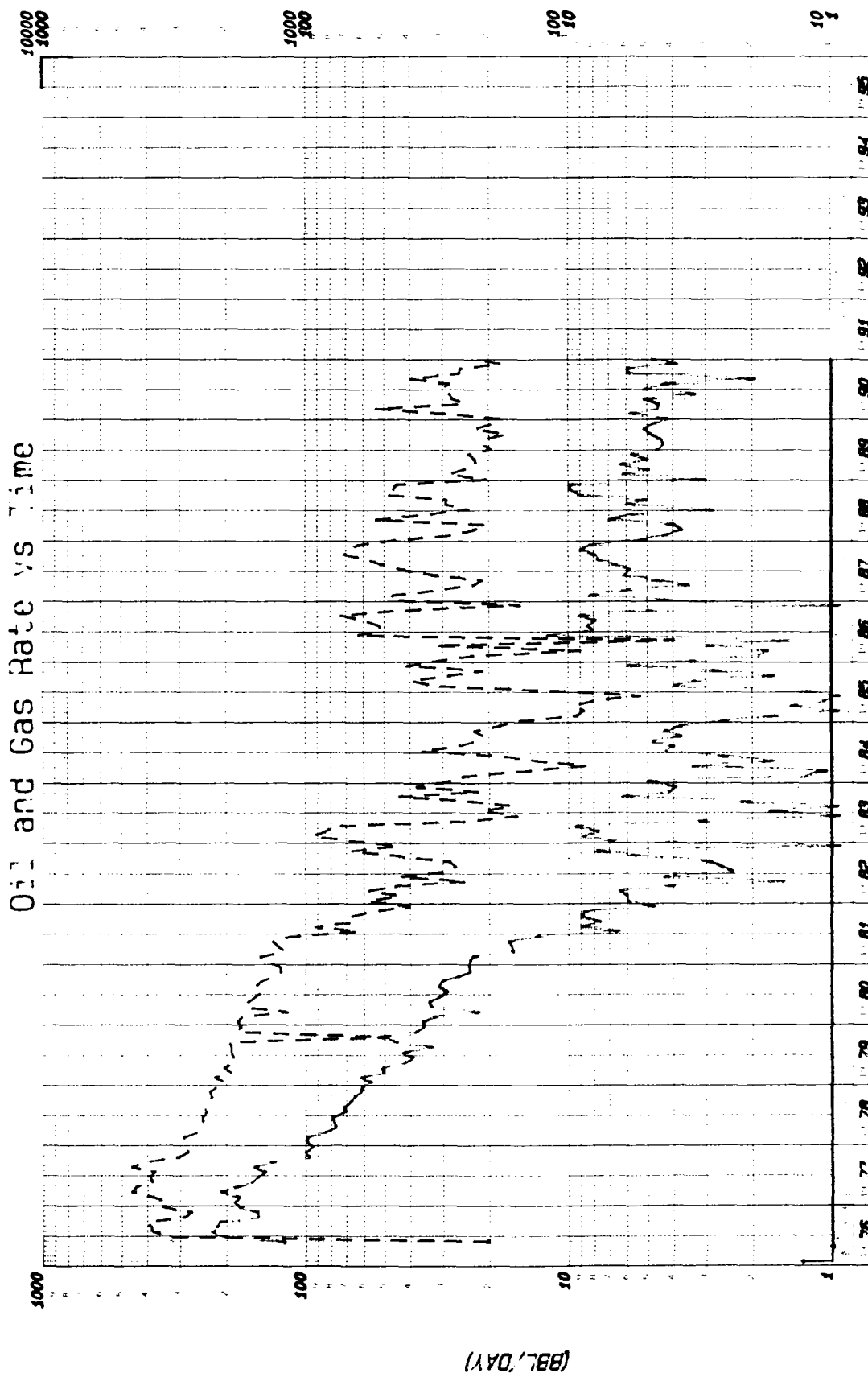
*Linda H. Hicks*

Linda H. Hicks  
Supervisor of Contracts

LHH/jb







Oil and Gas Rate vs Time

(MCF/DAY) (COUNT)

Date: 01-28-91  
Cumulative Bo : 174954  
Cumulative Mcf: 5663696

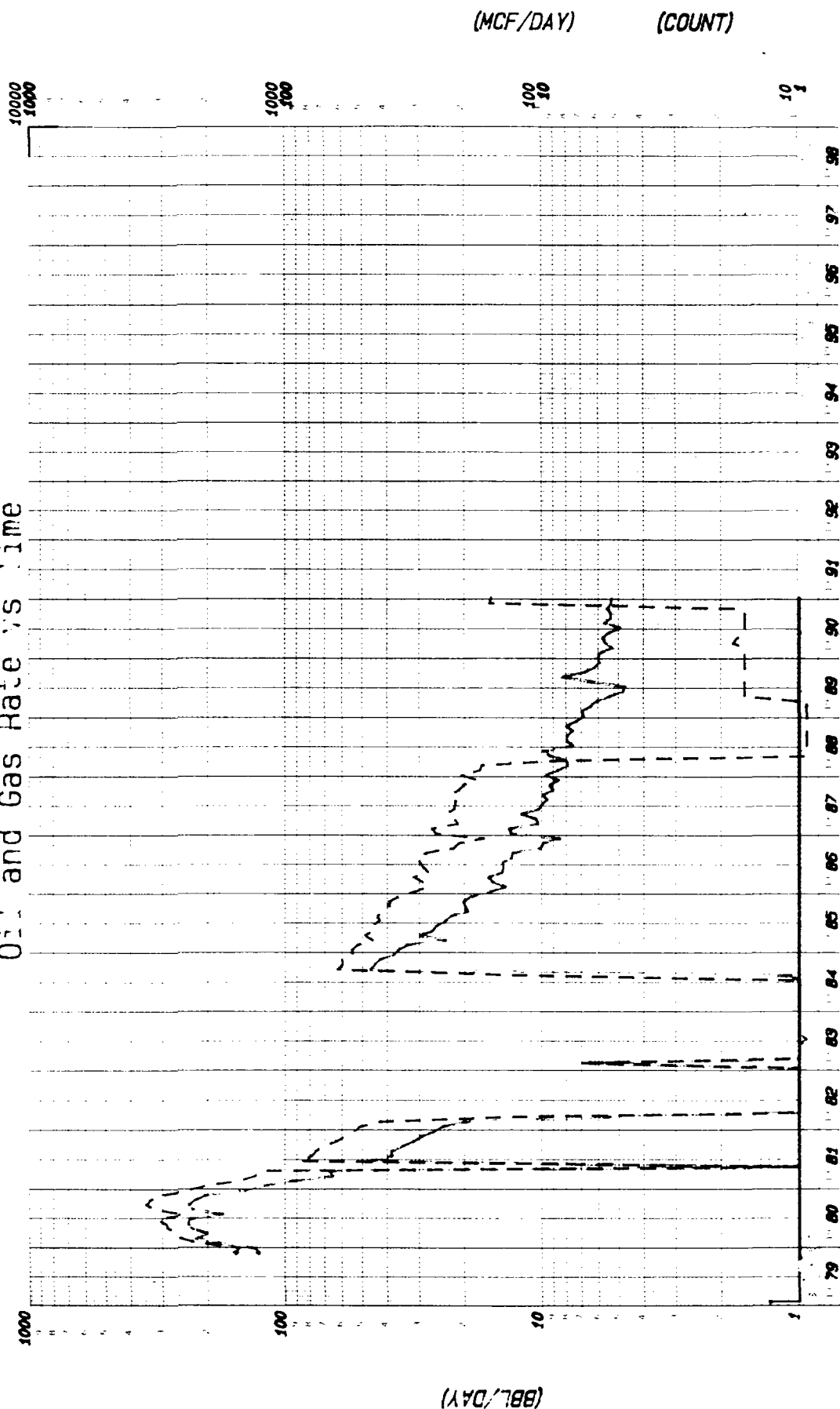
PM


UNOCAL MIDLAND DISTRICT

Lease: PIPELINE DEEP UNIT FEDERAL #1  
Field: GUAIL RIDGE MORROW (BAS)  
County: LEA NM  
Operator: UNION OIL CO OF CAL  
Retrieval Code: 260, 026, 19834E17J00PM

LEGEND  
WELLS —  
OIL —  
GAS —

# Oil and Gas Rate vs Time



**UNOCAL**  MIDLAND DISTRICT  
 Lease: PIPELINE DEEP UNIT FEDERAL #2 PM  
 Field: GRAIL RIDGE HORIZON, NORTH (GAS)  
 County: LEA NM  
 Operator: UNION OIL CO OF CAL  
 Retrieval Code: 250, 025, 19S34E18N00PM

**LEGEND**  
 WELLS ———  
 OIL ———  
 GAS ———

Date: 01-28-91  
 Cumulative Bo: 136020  
 Cumulative Mcf: 1968675

#4985

Unocal North American  
Oil & Gas Division  
Unocal Corporation  
1004 North Big Spring Street, Suite 300  
P.O. Box 3100  
Midland, Texas 79702  
Telephone (915) 684-8231

UNION

UNOCAL 

700021 009 24

Southwestern Region

3-23-90  
D-UNIT LETTER  
Tha  
Ry

March 15, 1990

Oil Conservation Division  
Energy and Minerals Division  
P. O. Box 2088  
Santa Fe, New Mexico 87504-2088

Attn: Mr. William J. LeMay,  
Director

Re: 1990 Plan of Development  
~~Pipeline Deep Unit~~  
Lea County, New Mexico  
Pipeline Prospect (7453)

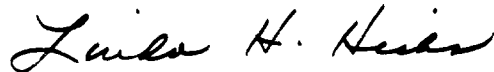
Gentlemen:

Please find enclosed for your approval two copies of Union's 1990 Plan of Development for the Pipeline Deep Unit.

Should you have any questions, please let me know.

Sincerely yours,

Union Oil Company of California



Linda H. Hicks  
Supervisor of Contracts

/ LHH:jpp

Enclosures

1990 PLAN OF DEVELOPMENT AND OPERATION  
PIPELINE DEEP UNIT AREA  
LEA COUNTY, NEW MEXICO

TO: Oil Conservation Division  
Energy and Minerals Division  
P. O. Box 2088  
Santa Fe, New Mexico 87504-2088

Attn: Mr. William J. LeMay,  
Director

Union Oil Company of California as Unit Operator for the Pipeline Deep Unit Area, pursuant to the provisions of Section 10 of the Unit Agreement for Development and Operation of the Laguna Deep Unit Area, dated April 12, 1973, (No. 14-08-0001-12402), respectfully submits for approval this 1990 Plan of Development and Operation for the Pipeline Deep Unit Area for the period ending December 31, 1990.

SUMMARY OF 1989 OPERATIONS:

No new Unit wells were drilled in 1988. The Pipeline Deep Unit Well No. 4 was plugged in the Morrow and a recompletion was attempted in the Bone Springs formation, a non-unitized formation. The recompletion was unsuccessful and the well is temporarily abandoned. Yearly production for 1989 for each Unit well is shown below:

<u>Well</u>	<u>Completed Interval</u>	<u>Gas MCF</u>	<u>Condensate (BBL)</u>	<u>Current Tests MCFD + BCPD</u>
1	Lower Morrow	79,187	1841	173 + 4
2	Middle Morrow	4,950	2283	16 + 6
4	Middle Morrow	1,945	0	T & A

PLAN OF DEVELOPMENT FOR 1990

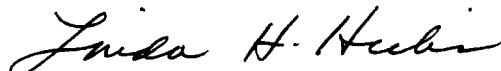
No new wells are planned for 1990.

This plan may be modified or supplemented from time to time with the approval needed, when necessary, to meet changed conditions or to protect the interest of all parties to the Unit Agreement.

Submitted this 15 day of March, 1990.

Sincerely yours,

Union Oil Company of California  
dba Unocal



Linda H. Hicks  
Supervisor of Contracts

LHH:jpp

Pipeline Deep Unit Federal #1

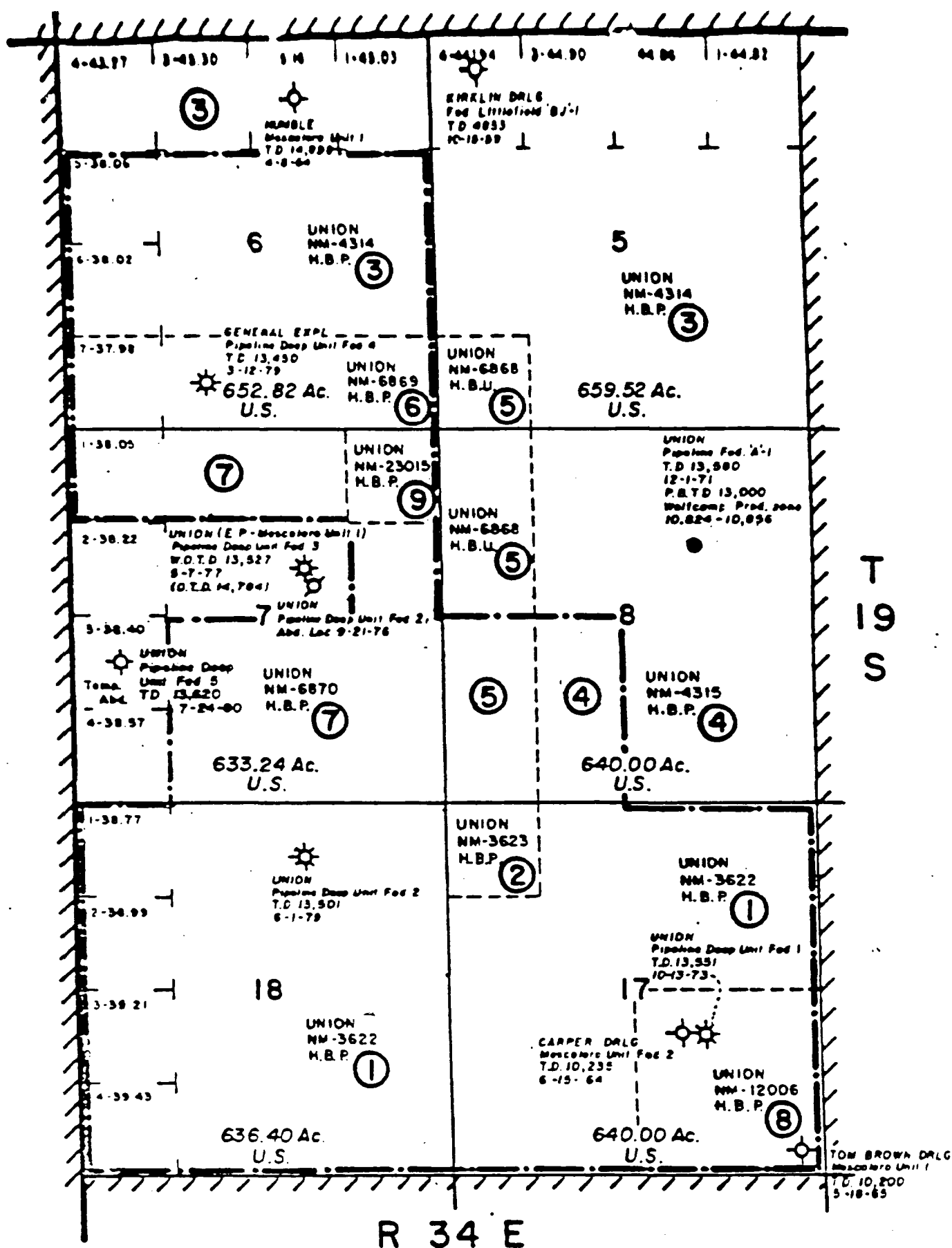
	Condensate <u>(Bbls)</u>	Gas <u>(MCF)</u>
<u>1988</u>		
Jan.	131	8239
Feb.	112	6941
Mar.	120	6199
Apr.	213	16414
May	176	10692
June	85	7249
July	185	8861
Aug.	152	8817
Sept.	274	15008
Oct.	298	14090
Nov.	303	13558
Dec.	91	6196
<u>1989</u>		
Jan.	190	8627
Feb.	149	7533
Mar.	193	6773
Apr.	151	6864
May	176	7278
June	138	5981
July	132	6408
Aug.	135	6387
Sept.	147	5192
Oct.	157	6930
Nov.	146	5852
Dec.	127	5362

# Pipeline Deep Unit Federal #2

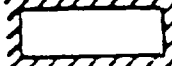

	Condensate <u>(Bbls)</u>	Gas <u>(MCF)</u>
<u>1988</u>		
Jan.	268	5342
Feb.	243	5264
Mar.	247	2654
Apr.	288	150
May	305	150
June	232	150
July	246	150
Aug.	246	150
Sept.	233	150
Oct.	247	150
Nov.	226	150
Dec.	211	150
<u>1989</u>		
Jan.	214	150
Feb.	198	150
Mar.	189	150
Apr.	168	500
May	148	500
June	145	500
July	195	500
Aug.	256	500
Sept.	210	500
Oct.	191	500
Nov.	183	500
Dec.	186	500

# Pipeline Deep Unit Federal #4

	Condensate <u>(Bbls)</u>	Gas <u>(MCF)</u>
<u>1988</u>		
Jan.	0	430
Feb.	0	0
Mar.	0	628
Apr.	0	560
May	19	831
June	0	184
July	4	353
Aug.	154	230
Sept.	4	421
Oct.	0	362
Nov.	0	183
Dec.	0	502
<u>1989</u>		
Jan.	0	307
Feb.	0	183
Mar.	0	150
Apr.	0	150
May	0	150
June	0	222
July	0	250
Aug.	0	183
Sept.	0	184
Oct.	0	166
Nov.	T&A	



**EXHIBIT "A" - (REVISED)**  
**LAND OWNERSHIP MAP - PIPELINE DEEP UNIT**  
 (AS CONTRACTED EFFECTIVE SEPTEMBER 1, 1979)  
 LEA COUNTY, NEW MEXICO

-  ORIGINAL UNIT BOUNDARY  
 REVISED UNIT BOUNDARY & PARTICIPATING AREA  
 ② TRACT-NUMBER-INDEX TO EXHIBIT "B"

SCALE: 1" = 2000'



#5028

# State of New Mexico



W.R. HUMPHRIES  
COMMISSIONER

## Commissioner of Public Lands

P.O. BOX 1148  
SANTA FE, NEW MEXICO 87504-1148

November 27, 1989

Century Production Inc.  
c/o Triton Oil and Gas Co.  
P.O. Drawer V  
Freer, Texas 78357

RE: Resignation-Designation of Unit Operator  
~~Antebellum Unit~~  
Eddy County, New Mexico

Gentlemen:

In a letter dated April 15, 1987 you were notified that our records show that the Great Basins Petroleum Co, is the current Unit Operator for the Antebellum Unit in Eddy County, New Mexico. In that letter we requested that you submit the required documentation as required by under Section 6 of the Unit Agreement:

"6. SUCCESSOR UNIT OPERATOR. Whenever the Unit Operator shall tender his or its resignation as Unit Operator or shall be removed as hereinabove provided, or a change of Unit Operator is negotiated by working interest owners, the owners of the working interests in the participating area or areas according to their respective acreage interests in such participating area or areas, or, until a participating area or areas shall have been established, the owners of the working interests according to their respective acreage interests in in all unitized land, shall by majority vote select a successor Unit Operator: Provided, That, if a majority but not less than 75 per cent of the working interests qualified to vote are owned by one party to this agreement, a concurring vote of one or more additional working interest owner shall be required to select a new operator. Such selection shall not become effective until

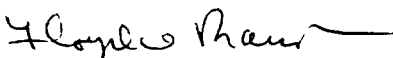
(a) a Unit Operator so selected shall accept in writing the duties and responsibilities of Unit Operator, and

(b) the selection shall have been approved by the Supervisor and approved by the Land Commissioner."

As of this date, we have still not received the required information and documentation and hereby request that we received it within 30 days. If you have any questions, please do not hesitate to contact Susan Howarth at (505) 827-5791.

Very truly yours,

W. R. HUMPHRIES,  
COMMISSIONER OF PUBLIC LANDS

BY:   
FLOYD O. PRANDO, Director  
Oil and Gas Division  
(505) 827-5749

# State of New Mexico



W.R. HUMPHRIES  
COMMISSIONER

## Commissioner of Public Lands

SLO REF NO. OG-32

P.O. BOX 1148  
SANTA FE, NEW MEXICO 87504-1148

April 15, 1987

Century Production Inc.  
C/O Triton Oil and Gas Co.  
P. O. Drawer V  
Freer, Texas 78357

Re: Resignation-Designation of Unit  
Operator form-Antebellum Unit  
Eddy County, New Mexico

Gentlemen:

The Bureau of Land Management has notified this office by their letter of March 18, 1987, that your 1987 Plan of Development has been approved. Our records still reflect that Great Basins Petroleum Co. is the current unit operator for the Antebellum Unit Area Eddy County, New Mexico.

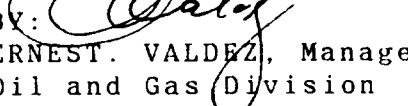
Please submit a change in unit operator to this office for approval as per Articles 8 and 9. Article 9 states that "such selection shall not become effective until (a) a Unit Operator so selected shall accept in writing the duties and responsibilities of Unit Operator, and (b) written notice of such selection shall have been filed with the Supervisor and approved the by the Commissioner."

Enclosed is a sample model for a designation of successor unit operator by working interest owners and a model for a change in unit operator by assignment.

If we may be of further help please do not hesitate to call on us.

Very truly yours,

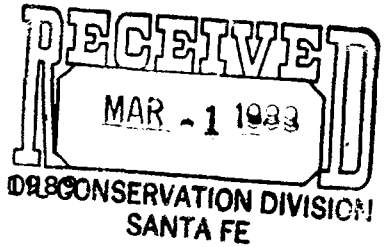
W. R. HUMPHRIES  
COMMISSIONER OF PUBLIC LANDS

BY:   
ERNEST. VALDEZ, Manager  
Oil and Gas Division  
(505) 827-5744

WRH/EV/pm  
encls.

Unocal Oil & Gas Division  
Unocal Corporation  
1004 North Big Spring Street, P.O. Box 671  
Midland, Texas 79702  
Telephone (915) 682-9731

**UNOCAL** 76



Midland District  
Central Region

#4985

February 23, 1989 OIL CONSERVATION DIVISION  
SANTA FE

Oil Conservation Division  
Energy and Minerals Division  
P. O. Box 2088  
Santa Fe, New Mexico 87504-2088

Attn: Mr. William J. LeMay,  
Director

1989 Plan of Development  
Pipeline Deep Unit  
Lea County, New Mexico  
Pipeline Prospect (7453)

Gentlemen:

Please find enclosed for your approval two copies of Union's 1989 Plan of Development for the Pipeline Deep Unit.

Should you have any questions, please let me know.

Sincerely yours,

Union Oil Company of California

A handwritten signature in cursive script that reads "Linda H. Hicks".

Linda H. Hicks  
Landman

LHH:jpp

Enclosures

1989 PLAN OF DEVELOPMENT  
PIPELINE DEEP UNIT AREA  
LEA COUNTY, NEW MEXICO

TO: Oil Conservation Division  
Energy and Minerals Division  
P. O. Box 2088  
Santa Fe, New Mexico 87504-2088

Attn: Mr. William J. LeMay, Director

Union Oil Company of California, as Unit Operator for the Pipeline Deep Unit Area, pursuant to the provisions of Section 10 of the Unit Agreement for Development and Operations of the Pipeline Deep Unit Area, dated April 12, 1973, (No. 14-08-0001-12402), respectfully submits for approval this 1989 Plan of Development for the Pipeline Deep Unit Area. This plan is for the period ending December 31, 1989.

SUMMARY OF 1988 OPERATIONS:

No new Unit wells were drilled in 1988. Yearly production for 1988 for each Unit well is shown below:

<u>WELL</u>	<u>GAS (MCF)</u>	<u>CONDENSATE (BBL)</u>	<u>CURRENT TESTS</u> <u>MCFD + BCPD</u>
1	122,300	1837	40 + 5
2	14,600	2951	161 + 6
4	4,700	0	14 + 0

1989 PLAN OF DEVELOPMENT

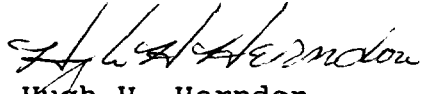
No new wells are planned for 1989.

This plan may be modified or supplemented from time to time with the approval needed, when necessary to meet changed conditions or to protect the interest of all parties to the Unit Agreement.

Submitted this 24 day of February, 1989.

Sincerely yours,

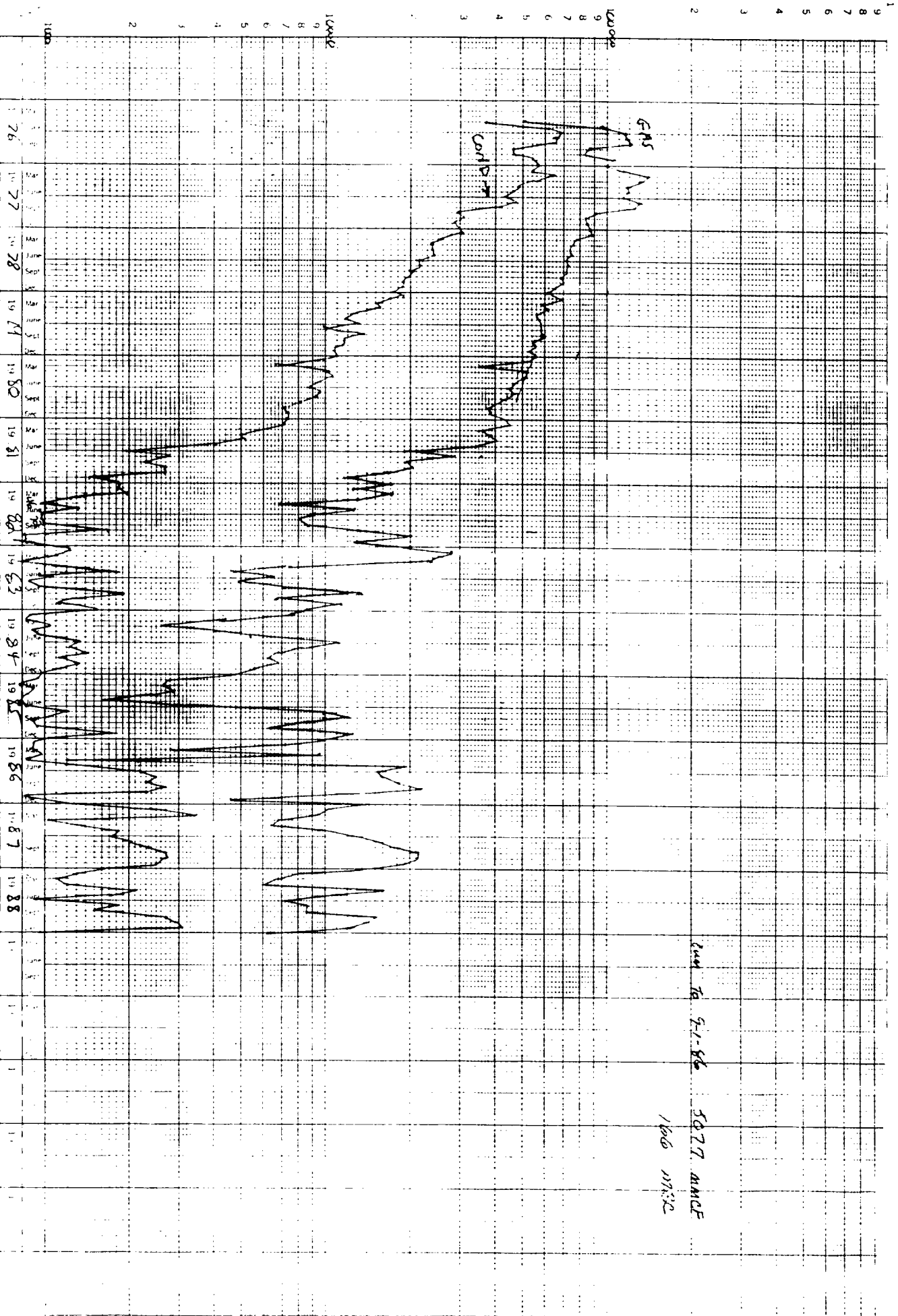
Union Oil Company of California

  
Hugh H. Herndon  
District Land Manager

HHH:LHH:jpp

- Pipeline Deep Unit Federal #1  
 Quail Ridge Morrow Field

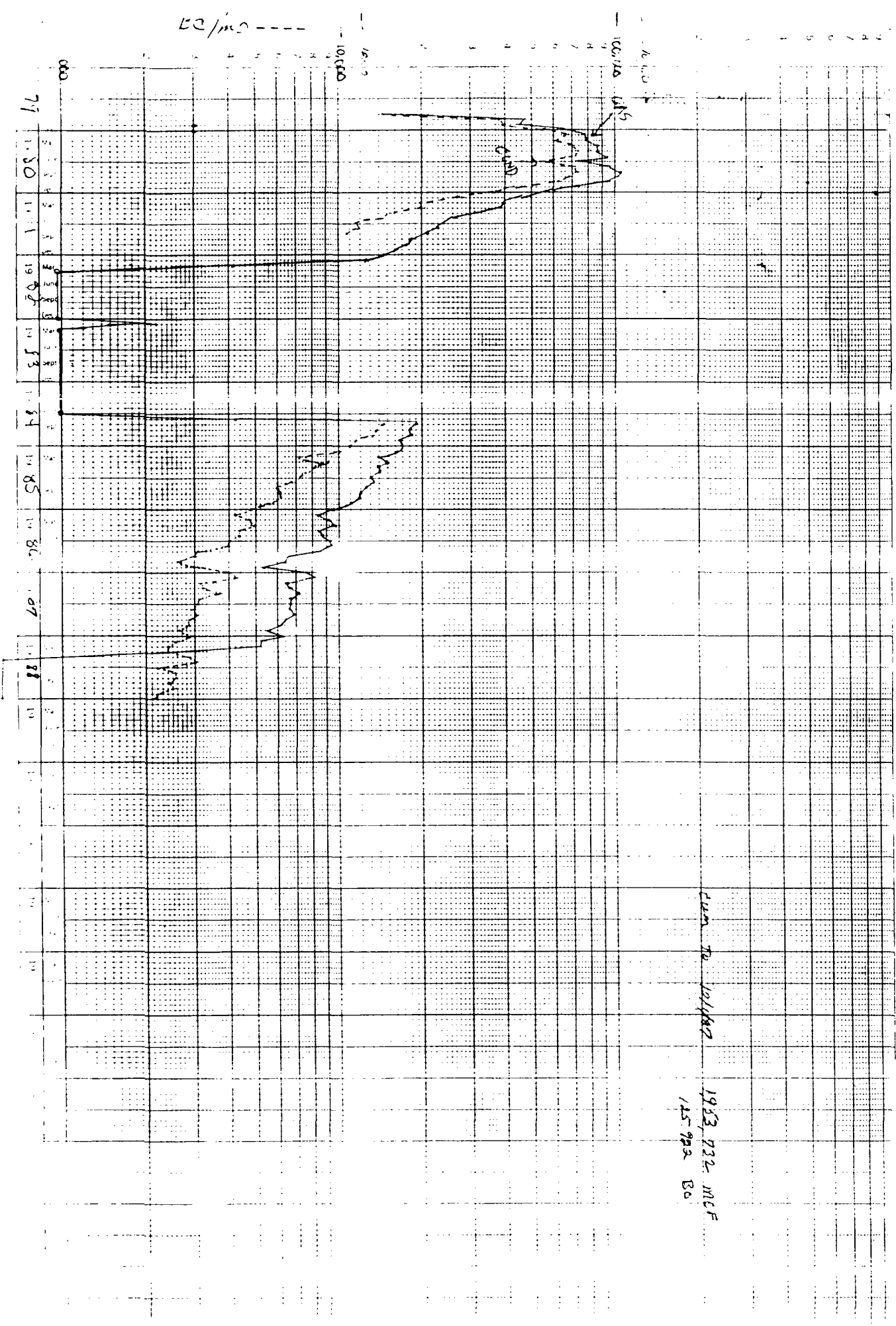
Run to 5-1-86 5077 AMCF  
 1600 MISC



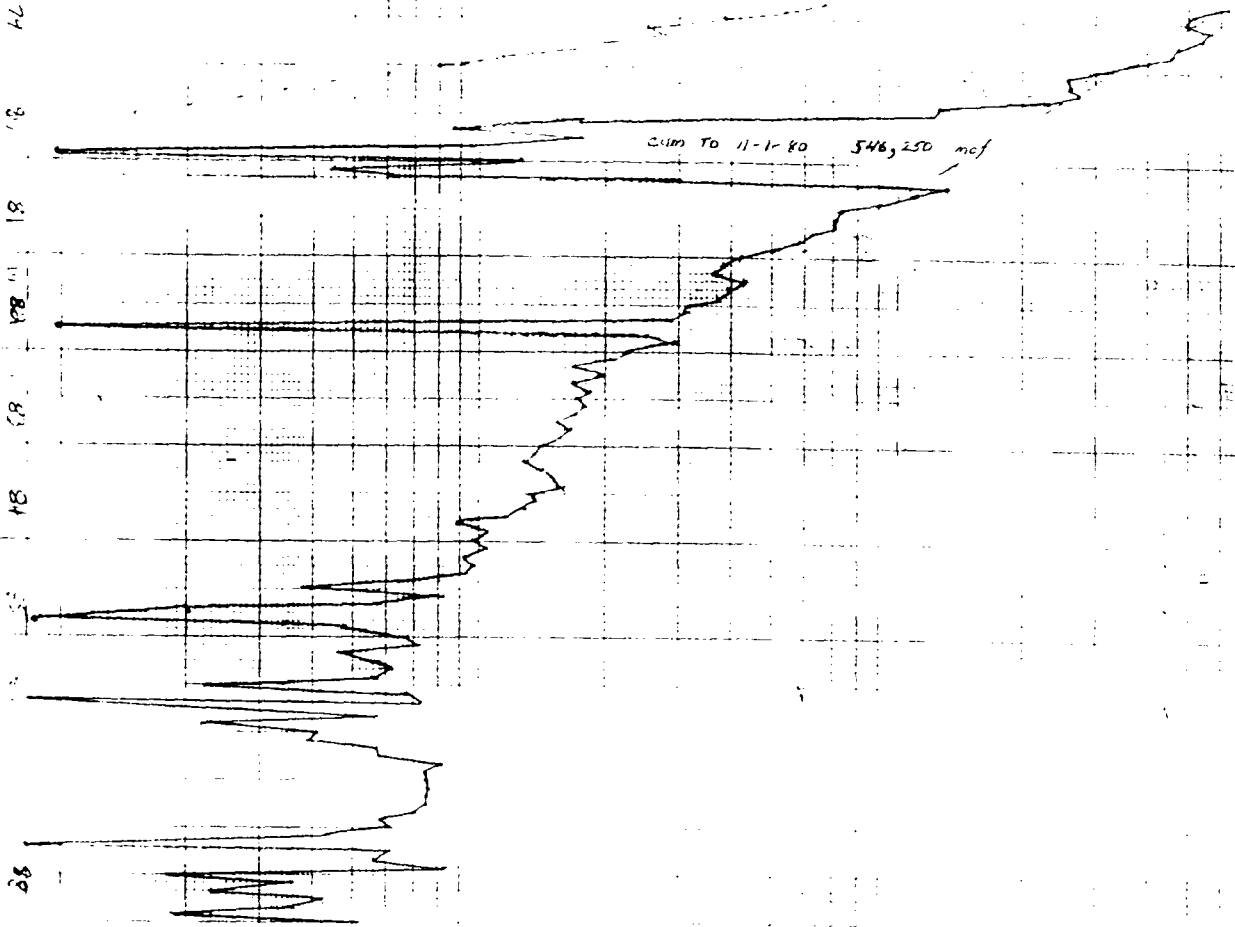
COND EXPANDED

Pipeline Deep Unit Federal #2  
 - Quail Ridge, North Morrow Field

Run to 10/1/82  
 1983, 922 MCF  
 145,922 Bo



Quail Ridge Morrow Field  
Pipeline Deep Unit Well #4



Cum 9-1-86

750 MMCF  
38 MB



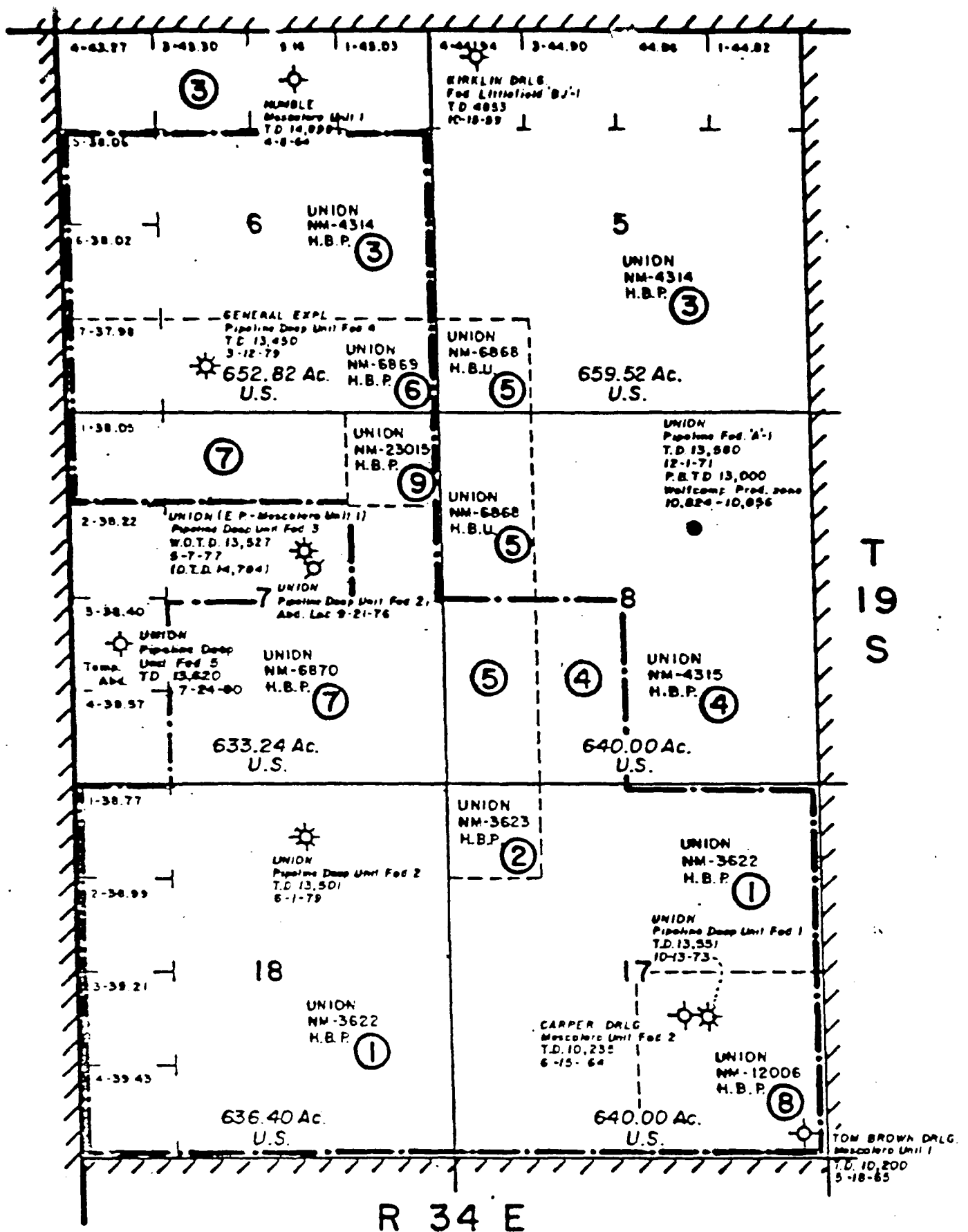
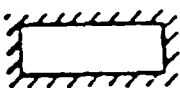


EXHIBIT "A" - (REVISED)

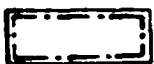
LAND OWNERSHIP MAP - PIPELINE DEEP UNIT

(AS CONTRACTED EFFECTIVE SEPTEMBER 1, 1979)

LEA COUNTY, NEW MEXICO



ORIGINAL UNIT BOUNDARY



REVISED UNIT BOUNDARY & PARTICIPATING AREA

②

TRACT-NUMBER-INDEX TO EXHIBIT "B"

SCALE: 1" = 2000'



STATE OF NEW MEXICO

ENERGY, MINERALS AND NATURAL RESOURCES DEPARTMENT

OIL CONSERVATION DIVISION

4985

GARREY CARRUTHERS  
GOVERNOR

March 7, 1988

POST OFFICE BOX 2088  
STATE LAND OFFICE BUILDING  
SANTA FE, NEW MEXICO 87504  
(505) 827-5800

Unocal  
P. O. Box 671  
Midland, Texas 79702

Attention: Linda H. Hicks

Re: 1988 Plan of Development  
Pipeline Deep Unit  
Lea County, New Mexico  
Pipeline Prospect (7453)

Gentlemen:

The above-referenced submittal has been approved by the New Mexico Oil Conservation Division effective this date. Such approval is contingent upon like approval by the New Mexico Commissioner of Public Lands and the Bureau of Land Management.

Sincerely,

ROY E. JOHNSON,  
Senior Petroleum Geologist

REJ/dr

cc: Commissioner of Public Lands - Santa Fe  
Bureau of Land Management - Albuquerque

**Unocal Oil & Gas Division**  
Unocal Corporation  
500 North Marientfeld, P.O. Box 671  
Midland, Texas 79702  
Telephone (915) 682-9731



March 1, 1988

Midland District

Oil Conservation Division  
Energy and Minerals Division  
P.O. Box 2088  
Santa Fe, New Mexico 87501  
Attn: Mr. William J. LeMay  
Director

1988 Plan of Development  
Pipeline Deep Unit  
Lea County, New Mexico  
Pipeline Prospect (7453)

Gentlemen:

Please find enclosed for your approval two copies of Union's 1988 Plan of Development and Operations for the Pipeline Deep Unit.

Should you have any questions, please let me know.

Sincerely yours,

UNION OIL COMPANY OF CALIFORNIA

A handwritten signature in cursive script that reads "Linda H. Hicks".

Linda H. Hicks  
Landman

LHH/s  
Enclosures



1988 PLAN OF DEVELOPMENT AND OPERATIONS

FOR

PIPELINE DEEP UNIT AREA

LEA COUNTY, NEW MEXICO

TO: Oil Conservation Division  
Energy and Minerals Division  
P.O. Box 2088  
Santa Fe, New Mexico 87501  
Attn: Mr. William J. LeMay

Union Oil Company of California, as Unit Operator for the Pipeline Deep Unit Area, pursuant to the provisions of Section 10 of the Unit Agreement for Development and Operations of the Pipeline Deep Unit Area, dated April 12, 1973, (No. 14-08-0001-12402), respectfully submits for approval this 1988 Plan of Development and Operation for the Pipeline Deep Unit Area. This plan is for the period ending December 31, 1988.

SUMMARY OF 1987 OPERATIONS:

No new Unit wells were drilled in 1987. Yearly production for 1987 for each Unit well is shown below:

<u>WELL</u>	<u>GAS(MCF)</u>	<u>CONDENSATE (BBL)</u>
1	167,950	2620
2	80,136	3776
4	8,031	183

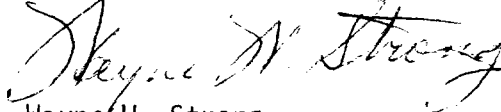
PLAN OF DEVELOPMENT AND OPERATIONS FOR 1988:

No new wells are planned for 1988.

This plan may be modified or supplemented from time to time with the approval needed, when necessary to meet changed conditions or to protect the interest of all parties to the Unit Agreement.

Sincerely yours,

UNION OIL COMPANY OF CALIFORNIA

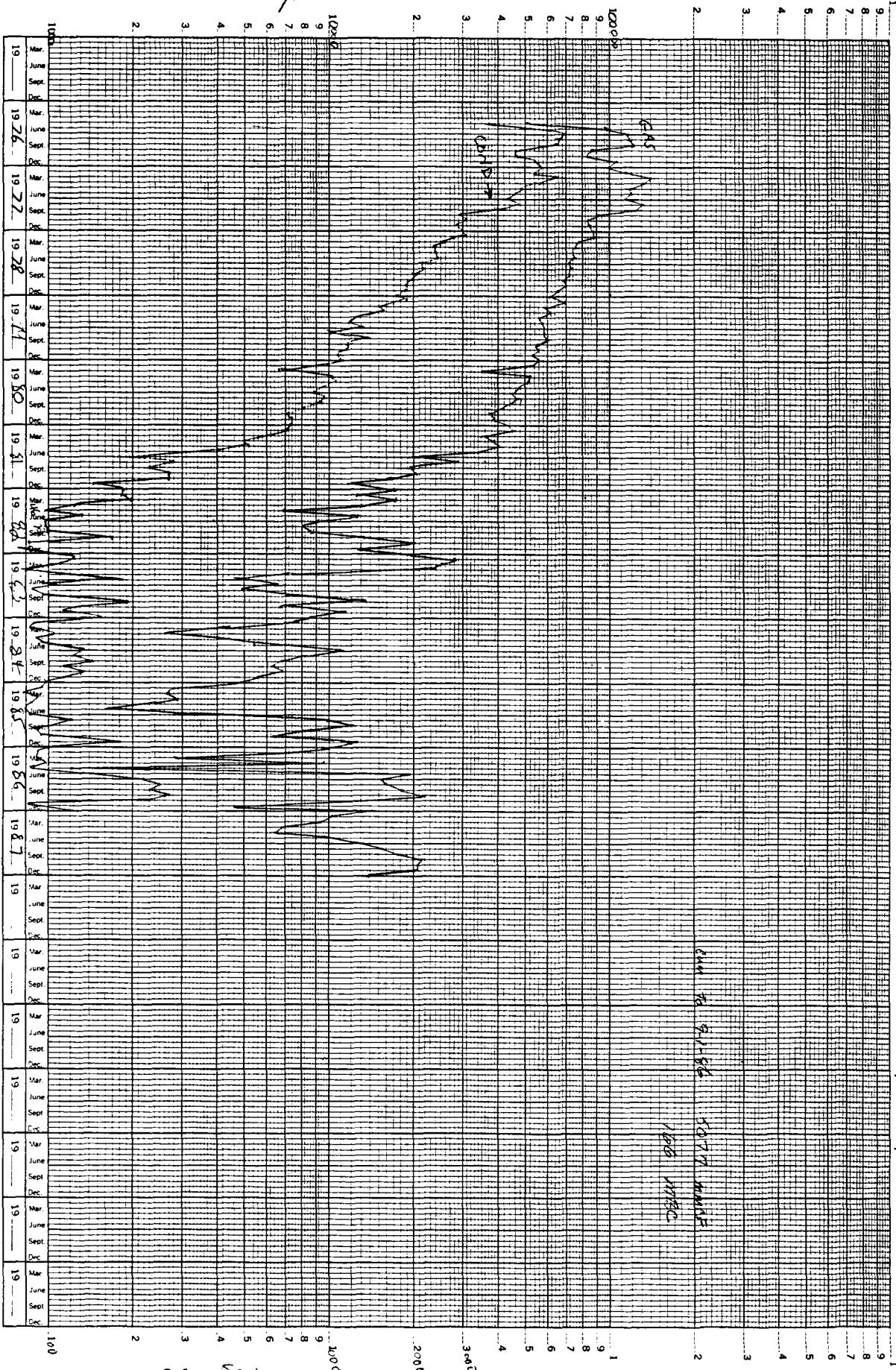


Wayne W. Strong  
District Land Manager

Submitted this 1 day of March, 1988.

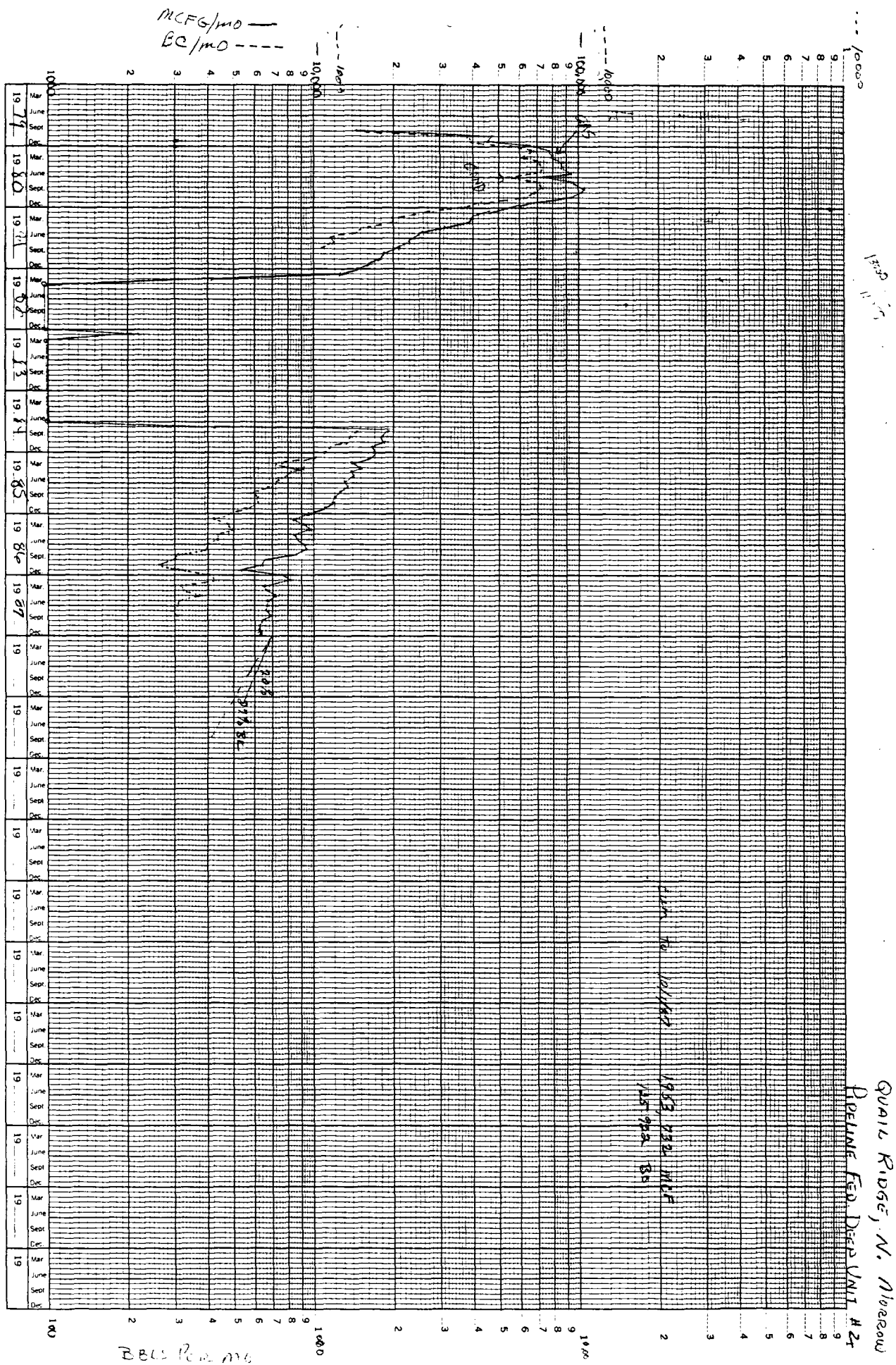
WWS/lhh

MCFG/m



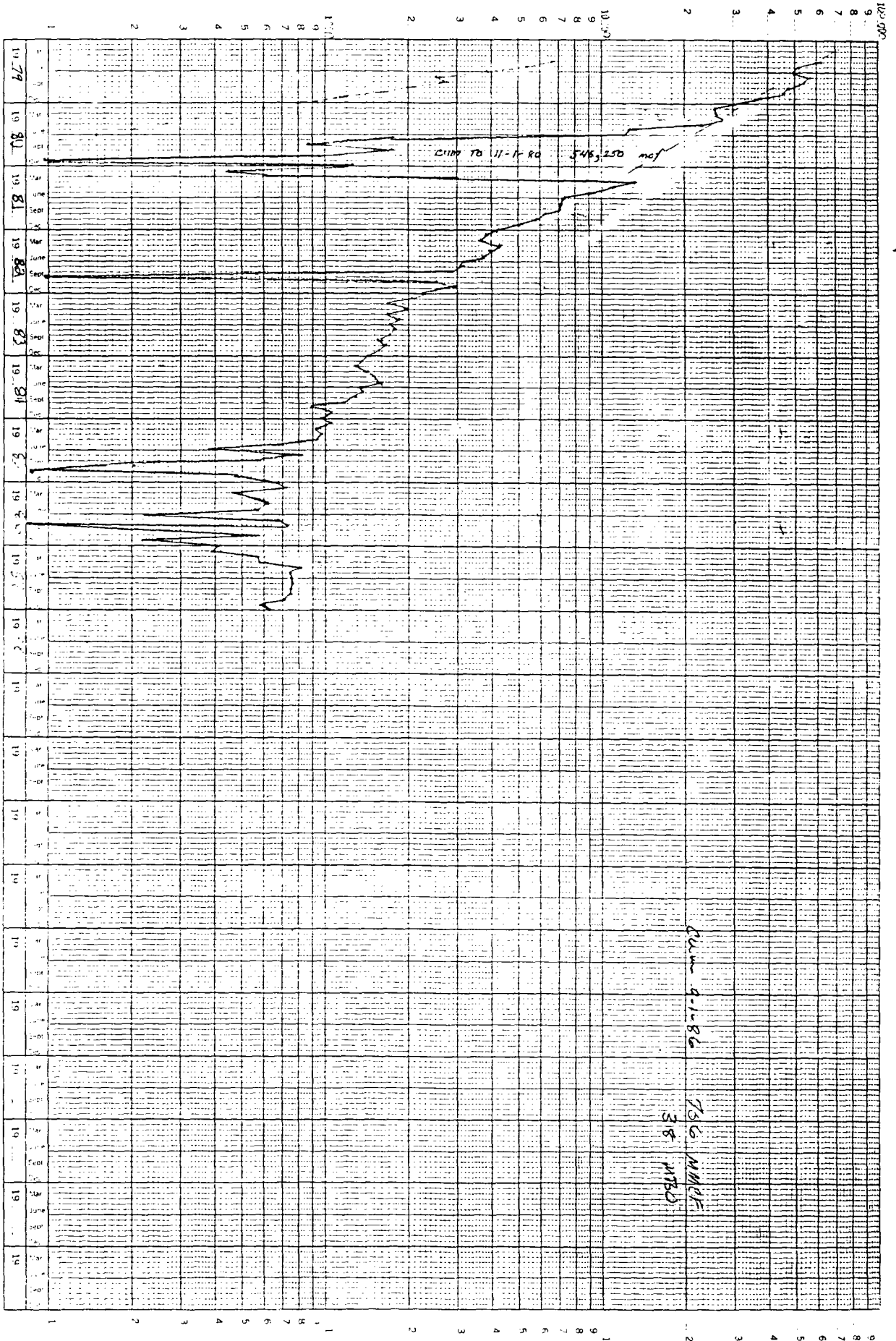
PIPELINE EROSION DEEP #1  
Quail Ridge

COND. BPAI Scale 1000



— Flow Rate in PPM  
--- Cond. Rate PPM/MO

Neaqua Quail Ridge Morrow Field  
Pipeline Deep Unit Well #4



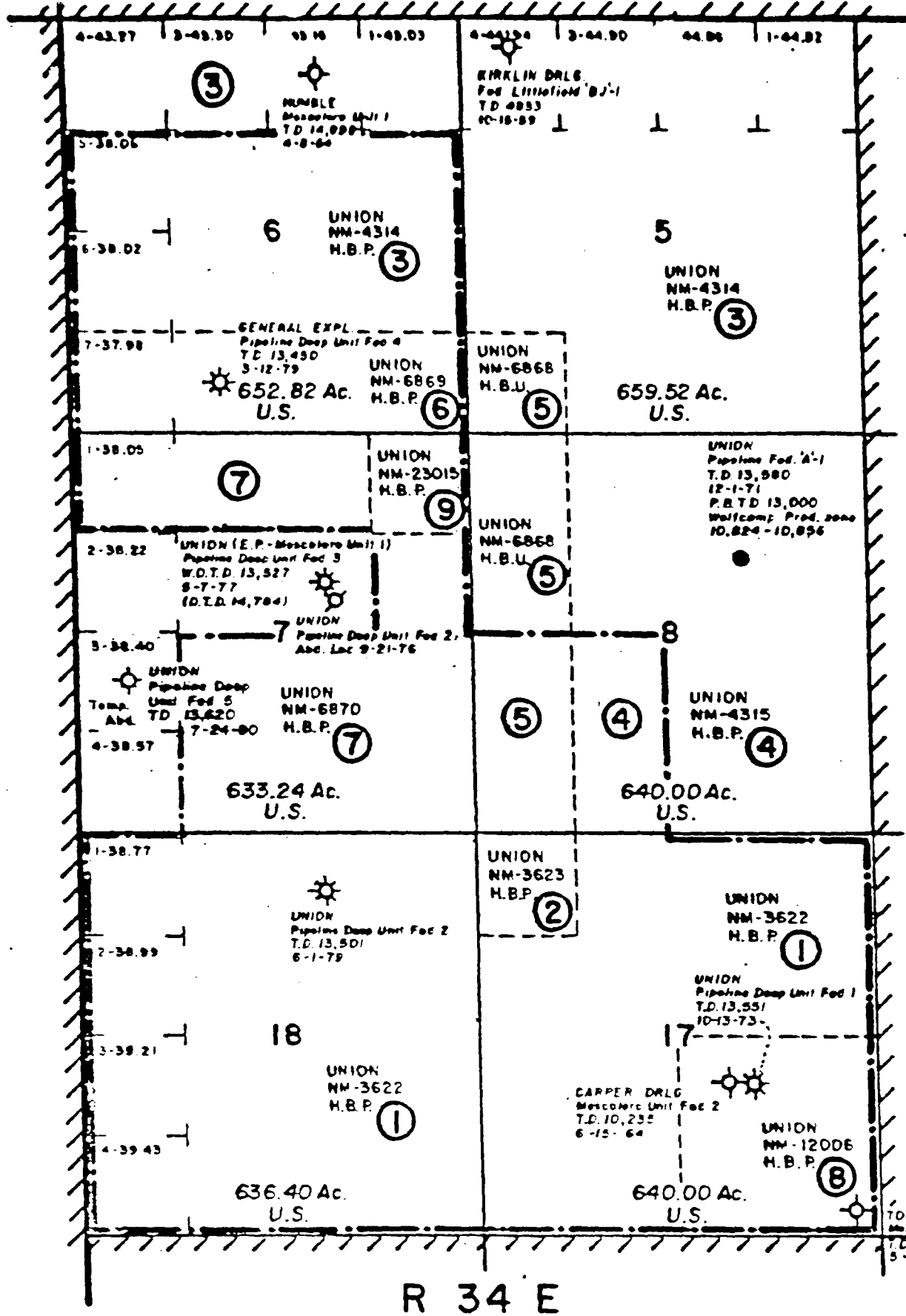


EXHIBIT "A" - (REVISED)

LAND OWNERSHIP MAP - PIPELINE DEEP UNIT

(AS CONTRACTED EFFECTIVE SEPTEMBER 1, 1979)

LEA COUNTY, NEW MEXICO

- ① ORIGINAL UNIT BOUNDARY
- ② REVISED UNIT BOUNDARY & PARTICIPATING AREA
- ③ TRACT-NUMBER-INDEX TO EXHIBIT "B"

SCALE: 1" = 2000'



ENERGY AND MINERALS DEPARTMENT

OIL CONSERVATION DIVISION



#4985

March 4, 1987

GAREY CARRUTHERS  
DIRECTOR

POST OFFICE BOX 2086  
STATE LAND OFFICE BUILDING  
SANTA FE NEW MEX CO 87501  
(505) 827-5800

Unocal  
P. O. Box 671  
Midland, Texas 79702

Attention: Linda H. Hicks

Re: 1987 Plan of Development  
Pipeline Deep Unit  
Lea County, New Mexico  
Pipeline Prospect (7435)

Gentlemen:

The above-referenced submittal has been approved by the New Mexico Oil Conservation Division effective this date. Such approval is contingent upon like approval by the New Mexico Commissioner of Public Lands and the Bureau of Land Management.

Sincerely,

ROY E. JOHNSON,  
Senior Petroleum Geologist

REJ/dr

cc: Commissioner of Public Lands - Santa Fe  
Bureau of Land Management - Albuquerque



# United States Department of the Interior

BUREAU OF LAND MANAGEMENT  
P. O. Box 1397  
Roswell, New Mexico 88201

#4985

IN REPLY  
REFER TO:

14-08-0001-12402  
3180 (060)

March 19, 1985

Union Oil Company of California  
500 North Marienfeld  
Midland, Texas 79702

RE: 1985 Plan of Development  
Pipeline Deep Unit  
Lea County, New Mexico

Gentlemen:

We are in receipt of your letter dated March 1, 1985 which describes your 1985 Plan of Development for the Pipeline Deep Unit, Lea County, New Mexico.

Such plan proposes no new drilling for 1985 and is approved effective as of January 1, 1985.

Sincerely yours,

S/T. Kreager

Acting District Manager

cc:

Commissioner of Public Lands, Santa Fe

NMOCD, Santa Fe

NMSO, Micrographics (943B)



TONEY ANAYA  
GOVERNOR

STATE OF NEW MEXICO  
**ENERGY AND MINERALS DEPARTMENT**  
OIL CONSERVATION DIVISION

#4985

POST OFFICE BOX 2088  
STATE LAND OFFICE BUILDING  
SANTA FE, NEW MEXICO 87501  
(505) 827-5800

March 4, 1985

Union Oil Company of California  
P.O. Box 671  
Midland, Texas 79702

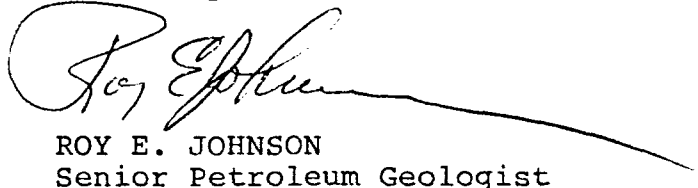
Attention: Larry Murphy

Re: Pipeline Deep Unit  
1985 Plan of Development  
Pipeline Prospect (7435)  
Lea County, New Mexico

Dear Mr. Murphy:

The above referenced submittal has been approved by the New Mexico Oil Conservation Division effective this date. Such approval is contingent upon like approval by the New Mexico Commissioner of Public Lands and the Bureau of Land Management.

Sincerely,



ROY E. JOHNSON  
Senior Petroleum Geologist

REJ/dp

cc: Commissioner of Public Lands - Santa Fe  
Bureau of Land Management - Albuquerque  
OCD District Office - Hobbs

Union Oil and Gas Division: Central Region

Union Oil Company of California  
500 North Marienfeld, Midland, Texas 79701  
P.O. Box 671, Midland, Texas 79702  
Telephone (915) 682-9731



Robert V. Lockhart  
District Land Manager  
Midland District

March 1, 1985

Oil Conservation Division  
Energy and Minerals Division  
P. O. Box 2088  
Santa Fe, New Mexico 87501

Attn: Mr. Dick Stamets, Director

Dear Mr. Stamets:

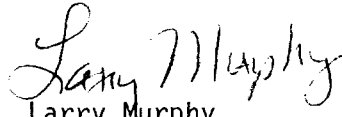
Pipeline Deep Unit  
1985 Plan of Development  
Pipeline Prospect (7435)  
Lea County, New Mexico

Please find enclosed two (2) copies of Union's Plan of Development for the Pipeline Deep Unit. We respectfully request your approval of same.

Should you have any questions, please do not hesitate to contact me.

Yours truly,

UNION OIL COMPANY OF CALIFORNIA

  
Larry Murphy  
Landman

JLM:dah

Enclosures

1985 PLAN OF DEVELOPMENT AND OPERATION

FOR

Pipeline Deep Unit Area  
Lea County, New Mexico

TO: Oil Conservation Division  
Energy and Minerals Division  
Attn: Mr. Dick Stamets, Director  
P. O. Box 2088  
Santa Fe, New Mexico 87501

UNION OIL COMPANY OF CALIFORNIA, as Unit Operator for the Pipeline Deep Unit Area, pursuant to the provisions of Section 10 of the Unit Agreement for Development and Operation of the Pipeline Deep Unit Area, dated April 12, 1973, (No. 14-08-0001-12402), respectfully submits for approval this 1985 Plan of Development and Operation for the Pipeline Unit Area. This plan is for the period ending December 31, 1985.

SUMMARY OF 1984 OPERATIONS:

Workover operations were successful to cement squeeze the watered-out Morrow perforations and recompleate in other Morrow Sands in the Pipeline Deep Unit Federal Unit #2. This producer was returned to production July, 1984, at a rate of 605 MCF and 47 BC and 3 BWP. Yearly production for 1984 for each unit well is shown below:

<u>WELL NO.</u>	<u>PRODUCTION SUMMARY 1984</u>		<u>CURRENT DAILY PRODUCTION</u>	
	<u>GAS (MCF)</u>	<u>CONDENSATE (BBL)</u>	<u>GAS (MCF)</u>	<u>CONDENSATE (BBL)</u>
1	73,695	1,143	148	2
2	93,605	6,439	548	36
4	16,603	216	290	.5

PLAN OF DEVELOPMENT AND OPERATION FOR 1985:

All operations are expected to be normal for the year. No wells are planned to be drilled.

This Plan may be modified or supplemented from time to time with the necessary approval needed, when necessary to meet changed conditions or to protect the interest of all parties to the Unit Agreement.

SUBMITTED this 1st day of March, 1985.

UNION OIL COMPANY OF CALIFORNIA

By:   
H. Rene' Moulinet  
District Land Manager (Acting)

1985 PLAN OF DEVELOPMENT AND OPERATION

FOR

Pipeline Deep Unit Area  
Lea County, New Mexico

TO: Oil Conservation Division  
Energy and Minerals Division  
Attn: Mr. Dick Stamets, Director  
P. O. Box 2088  
Santa Fe, New Mexico 87501

UNION OIL COMPANY OF CALIFORNIA, as Unit Operator for the Pipeline Deep Unit Area, pursuant to the provisions of Section 10 of the Unit Agreement for Development and Operation of the Pipeline Deep Unit Area, dated April 12, 1973, (No. 14-08-0001-12402), respectfully submits for approval this 1985 Plan of Development and Operation for the Pipeline Unit Area. This plan is for the period ending December 31, 1985.

SUMMARY OF 1984 OPERATIONS:

Workover operations were successful to cement squeeze the watered-out Morrow perforations and recompleate in other Morrow Sands in the Pipeline Deep Unit Federal Unit #2. This producer was returned to production July, 1984, at a rate of 605 MCF and 47 BC and 3 BWPD. Yearly production for 1984 for each unit well is shown below:

WELL NO.	<u>PRODUCTION SUMMARY 1984</u>		<u>CURRENT DAILY PRODUCTION</u>	
	<u>GAS (MCF)</u>	<u>CONDENSATE (BBL)</u>	<u>GAS (MCF)</u>	<u>CONDENSATE (BBL)</u>
1	73,695	1,143	148	2
2	93,605	6,439	548	36
4	16,603	216	290	.5

PLAN OF DEVELOPMENT AND OPERATION FOR 1985:

All operations are expected to be normal for the year. No wells are planned to be drilled.

This Plan may be modified or supplemented from time to time with the necessary approval needed, when necessary to meet changed conditions or to protect the interest of all parties to the Unit Agreement.

SUBMITTED this 1st day of March, 1985.

UNION OIL COMPANY OF CALIFORNIA

By: H. Rene Moulinet  
H. Rene Moulinet  
District Land Manager (Acting)

#4985

14-08-0001-12402

November 6, 1984

Union Oil Company of California  
Attn: Robert V. Lockhart  
500 North Marienfield  
Midland, TX 79701

RE: 1984 Plan of Development,  
Pipeline Deep Unit, Lea  
County, New Mexico

Gentlemen:

We are in receipt of your letter dated August 6, 1984 which summarizes 1981 through 1983 production operations and describes the 1984 Plan of Development for the Pipeline Deep Unit, Lea County, New Mexico.

Your 1984 Plan of Development proposing to squeeze cement a watered out perforated interval and test additional Morrow interval(s) in the Unit Well No. 2 is hereby approved effective this date.

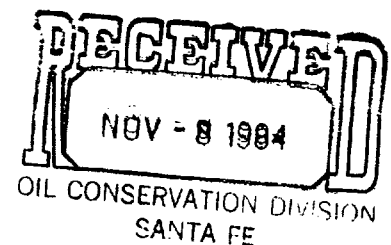
We appreciate your detailed summary of operations and production history for the Pipeline Deep Unit.

Sincerely yours,

E.L. Kiegan

District Manager

cc: Commissioner of Public Lands, Santa Fe  
NMOCD, Santa Fe



Union Oil and Gas Division: Central Region

Union Oil Company of California  
500 North Mariefeld, Midland, Texas 79701  
P.O. Box 671, Midland, Texas 79702  
Telephone (915) 682-9731

OIL CONSERVATION DIVISION

MAY 11 1981

RECEIVED

**UNION** 

OIL CONSERVATION DIVISION

MAY 11 1981

RECEIVED

Robert V. Lockhart  
District Land Manager  
Midland District

4985

May 6, 1981

Oil Conservation Division  
Energy and Minerals Division  
P. O. Box 2088  
Santa Fe, New Mexico 87501

Attn: Mr. Joe Ramey, Director

Gentlemen:

Pipeline Deep Unit  
Lea County New Mexico  
Elimination of Lands & Unit  
Boundary to Pipeline Deep Participating Area  
Effective August 1, 1980

Reference is made to our letter wherein you were furnished with Union Oil Company of California's letter dated November 12, 1980 requesting the U.S.G.S.'s approval for a proposed contraction of the subject area as a result of the dry hole completion of the Pipeline Deep Unit #5.

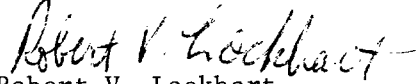
Enclosed for the completion of your file is a copy of the Survey's letter dated April 28, 1981 and an approved copy of Union's letter dated November 12, 1980.

If anything further is required, please contact the undersigned.

Thank you for your cooperation in this matter.

Yours very truly,

UNION OIL COMPANY OF CALIFORNIA

  
Robert V. Lockhart  
District Land Manager

RVL:cs  
Encl.





# United States Department of the Interior

GEOLOGICAL SURVEY

South Central Region

P. O. Box 26124

Albuquerque, New Mexico 87125

CONSERVATION DIVISION  
MAY 11 1981

RECEIVED  
*Pipeline Pres.*

28 APR 1981

Union Oil Company of California  
Attention: Robert V. Lockhart  
P. O. Box 671  
Midland, Texas 79702

RECEIVED  
MAY 1 1981  
MIDLAND DISTRICT LAND

Gentlemen:

Your letter of November 12, 1980 requests approval of the elimination of certain lands from the Pipeline Deep Unit area as a result of the completion, as a dry hole, of your Pipeline Deep Federal Well No. 5.

The lands requested for elimination by your application are Lots 3 and 4, section 7, T. 19 S., R. 34 E., N.M.P.M., comprising 76.97 acres.

We hereby approve the elimination of such lands from the Pipeline Deep Unit area pursuant to section 11 of the unit agreement and one approved copy of the elimination is returned herewith.

Sincerely yours,

Gene F. Daniel  
Deputy Conservation Manager  
Oil and Gas

Enclosure

*Copy: OCD / Mr. Joe D. Ramsey  
Region*

Union Oil Company of California  
500 North Mariefeld, Midland, Texas 79701  
P.O. Box 671, Midland, Texas 79702  
Telephone (915) 682-9731



9/10/80 CONSERVATION DIV.  
MAY 11 1981  
RECEIVED

Robert V. Lockhart  
District Land Manager  
Midland District

November 12, 1980

Director U.S. Geological Survey  
Department of the Interior  
Washington, D. C. 20025

Attn: Supervisor U.S. Geological Survey  
P. O. Box 26124  
Albuquerque, New Mexico 87125

Gentlemen:

Pipeline Deep Unit  
Lea County, New Mexico  
No. 14-08-0001-12402  
Elimination of Lands & Unit  
Boundary to Pipeline Deep Participating Area  
Effective August 1, 1980

Pursuant to Section 11 of the Pipeline Deep Unit Agreement, approved by the Supervisor of the United States Geological Survey, July 26, 1973, Union Oil Company of California as Unit Operator, submits for your approval the elimination of certain lands from the Unit boundary and present participating area. The elimination request is submitted as a result of the completion, as a dry hole, of our Pipeline Deep Federal Well #5 located 1980' FSL and 660' FWL, Section 7, T-19-S, R-34-E, Lea County, New Mexico. After an unsuccessful attempt to treat by acidizing and complete in the Morrow formation from 13,054' to 13,288', the well was shut-in on July 24, 1980. We are presently evaluating plans to convert the well to a salt water disposal facility.

Union requests the following lands be eliminated effective August 1, 1980:

<u>Township 19 South, Range 34 East</u>	<u>Acres</u>
Section 7: Lots 3 & 4	76.97

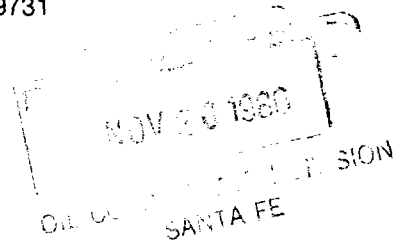
We are enclosing for your reference and approval the following items:

- 1.) An ownership map marked Exhibit "A", showing thereon the boundary of the Unit Area and the boundary of the proposed revision herein.
- 2.) Revised Exhibit "B", showing contracted Morrow participating area effective August 1, 1980.
- 3.) Geological report by Coyle Singletary, with attached structure map.

Cont'd. next pg.-

Union Oil and Gas Division: Central Region

Union Oil Company of California  
500 North Marienfeld, Midland, Texas 79701  
P.O. Box 671, Midland, Texas 79702  
Telephone (915) 682-9731



November 17, 1980

Robert V. Lockhart  
District Land Manager  
Midland District

Oil & Conservation Division  
Energy & Mineral Division  
P. O. Box 2088  
Santa Fe, New Mexico 87501

Attn: Mr. Joe D. Ramey, Director

Gentlemen:

Unit Contraction  
Case No. 4985  
Order No. R-4552  
Pipeline Deep Unit Area  
Lea County, New Mexico  
(U.S.G.S. Contract #14-08-0001-12402)

Enclosed for your reference and file is a copy of our letter dated November 12, 1980 requesting the Supervisor's approval of a proposed contraction for the Union Oil Company of California operated Pipeline Deep Unit. Also being submitted are the attached items and maps referenced in the aforesaid letter for your reference and file.

You will be furnished with a copy of the Supervisor's approval as soon as it is received.

Should you have any questions, please contact the undersigned.

Yours very truly,

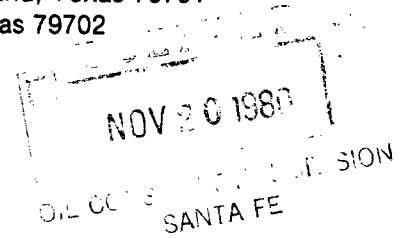
UNION OIL COMPANY OF CALIFORNIA

*Robert V. Lockhart*  
Robert V. Lockhart  
District Land Manager

RVL:ib

Union Oil and Gas Division: Central Region

Union Oil Company of California  
500 North Mariefeld, Midland, Texas 79701  
P.O. Box 671, Midland, Texas 79702  
Telephone (915) 682-9731



Robert V. Lockhart  
District Land Manager  
Midland District

November 17, 1980

Oil & Conservation Division  
Energy & Mineral Division  
P. O. Box 2088  
Santa Fe, New Mexico 87501

Attn: Mr. Joe D. Ramey, Director

Gentlemen:

Unit Contraction  
Case No. 4985  
Order No. R-4552  
Pipeline Deep Unit Area  
Lea County, New Mexico  
(U.S.G.S. Contract #14-08-0001-12402)

Enclosed for your reference and file is a copy of our letter dated November 12, 1980 requesting the Supervisor's approval of a proposed contraction for the Union Oil Company of California operated Pipeline Deep Unit. Also being submitted are the attached items and maps referenced in the aforesaid letter for your reference and file.

You will be furnished with a copy of the Supervisor's approval as soon as it is received.

Should you have any questions, please contact the undersigned.

Yours very truly,

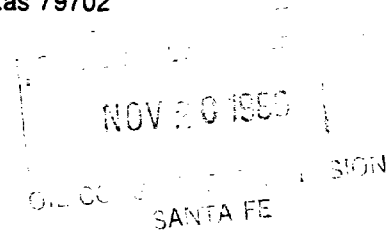
UNION OIL COMPANY OF CALIFORNIA

  
Robert V. Lockhart  
District Land Manager

RVL:ib

Union Oil and Gas Division: Central Region

Union Oil Company of California  
500 North Marienfeld, Midland, Texas 79701  
P.O. Box 671, Midland, Texas 79702  
Telephone (915) 682-9731



Robert V. Lockhart  
District Land Manager  
Midland District

November 17, 1980

Oil & Conservation Division  
Energy & Mineral Division  
P. O. Box 2088  
Santa Fe, New Mexico 87501

Attn: Mr. Joe D. Ramey, Director

Gentlemen:

Unit Contraction  
Case No. 4985  
Order No. R-4552  
Pipeline Deep Unit Area  
Lea County, New Mexico  
(U.S.G.S. Contract #14-08-0001-12402)

Enclosed for your reference and file is a copy of our letter dated November 12, 1980 requesting the Supervisor's approval of a proposed contraction for the Union Oil Company of California operated Pipeline Deep Unit. Also being submitted are the attached items and maps referenced in the aforesaid letter for your reference and file.

You will be furnished with a copy of the Supervisor's approval as soon as it is received.

Should you have any questions, please contact the undersigned.

Yours very truly,

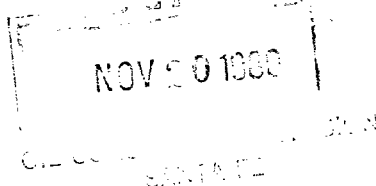
UNION OIL COMPANY OF CALIFORNIA

*Robert V. Lockhart*  
Robert V. Lockhart  
District Land Manager

RVL:ib

Union Oil and Gas Division: Central Region

Union Oil Company of California  
500 North Mariefeld, Midland, Texas 79701  
P.O. Box 671, Midland, Texas 79702  
Telephone (915) 682-9731



Robert V. Lockhart  
District Land Manager  
Midland District

November 12, 1980

Director U.S. Geological Survey  
Department of the Interior  
Washington, D. C. 20025

Attn: Supervisor U.S. Geological Survey  
P. O. Box 26124  
Albuquerque, New Mexico 87125

Gentlemen:

Pipeline Deep Unit  
Lea County, New Mexico  
No. 14-08-0001-12402  
Elimination of Lands & Unit  
Boundary to Pipeline Deep Participating Area  
Effective August 1, 1980

Pursuant to Section 11 of the Pipeline Deep Unit Agreement, approved by the Supervisor of the United States Geological Survey, July 26, 1973, Union Oil Company of California as Unit Operator, submits for your approval the elimination of certain lands from the Unit boundary and present participating area. The elimination request is submitted as a result of the completion, as a dry hole, of our Pipeline Deep Federal Well #5 located 1980' FSL and 660' FWL, Section 7, T-19-S, R-34-E, Lea County, New Mexico. After an unsuccessful attempt to treat by acidizing and complete in the Morrow formation from 13,054' to 13,288', the well was shut-in on July 24, 1980. We are presently evaluating plans to convert the well to a salt water disposal facility.

Union requests the following lands be eliminated effective August 1, 1980:

<u>Township 19 South, Range 34 East</u>	<u>Acres</u>
Section 7: Lots 3 & 4	76.97

We are enclosing for your reference and approval the following items:

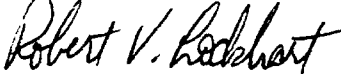
- 1.) An ownership map marked Exhibit "A", showing thereon the boundary of the Unit Area and the boundary of the proposed revision herein.
- 2.) Revised Exhibit "B", showing contracted Morrow participating area effective August 1, 1980.
- 3.) Geological report by Coyle Singletary, with attached structure map.

Cont'd. next pg.-

Applicant respectfully requests approval of the elimination, effective August 1, 1980, of the above described lands from the Pipeline Deep Unit Agreement and also request approval of the attached revised Exhibits "A" & "B" for the new Pipeline Deep Unit, as contracted. Upon receipt of such approvals, we shall send appropriate notification of the foregoing to all other parties in interest as required by the Unit Agreement.

Very truly yours,

UNION OIL COMPANY OF CALIFORNIA

  
Robert V. Lockhart  
District Land Manager

RVL:ib