



JIM BACA
COMMISSIONER

State of New Mexico

OFFICE OF THE

Commissioner of Public Lands

Santa Fe

5028

P.O. BOX 1148
SANTA FE, NEW MEXICO 87504-1148

SLO REF NO. OG-1299

April 26, 1993

Tenison Oil Company
601 One Glen Lakes
8140 Walnut Hill Lane
Dallas, Texas 75231

Attn: Mr. William B. Tenison

Re: 1993 Plan of Development
Antebellum Unit
Lea County, New Mexico

Gentlemen:

The Commissioner of Public Lands has this date approved the above captioned Plan of Development. Our approval is subject to like approval by all other appropriate agencies.

The possibility of drainage by wells outside of the Unit Area and the need for further development of the unit may exist. You will be contacted at a later date regarding these possibilities.

If you have any questions, or if we may be of further help, please contact Pete Martinez at (505) 827-5791.

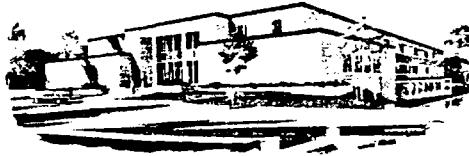
Very truly yours,

JIM BACA
COMMISSIONER OF PUBLIC LANDS

BY: *Floyd O. Prando*
FLOYD O. PRANDO, Director
Oil and Gas Division
(505) 827-5744

JB/FOP/pm
cc: OCD
BLM

State of New Mexico



SLO REF NO. OG-31

W.R. HUMPHRIES
COMMISSIONER

Commissioner of Public Lands

April 15, 1987

P.O. BOX 1148
SANTA FE, NEW MEXICO 87504-1148

Century Production Inc.
C/O Triton Oil and Gas Co.
P. O. Drawer V
Freer, Texas 78357

#5028

Re: 1987 Plan of Development
Antebellum Unit
Lea County, New Mexico


Gentlemen:

The Bureau of Land Management has notified this office that your 1987 Plan of Development for the Antebellum Unit Area, Lea County, New Mexico has been approved. Our records reflect that the last plan of Development for the referenced unit was dated October 23, 1974 covered the development period of 1975. Under the terms of Article 10 of the Unit Agreement, please submit your Plan of Development for 1987.

As part of your plan we require an up-to-date map of the unit area showing all wells and the zone(s) of completion. In addition please furnish a summary by months of the last years production history. Please be advised that the above information (map and production history) will be required by this office on all future Plans of Development that require the Land Commissioner's approval.

Very truly yours,

W. R. HUMPHRIES
COMMISSIONER OF PUBLIC LANDS

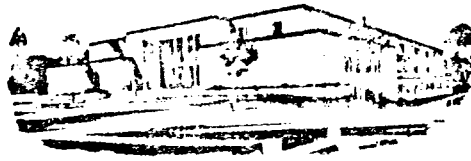
BY: 
ERNEST VALDEZ, Manager
Oil and Gas Division
(505) 827-5744

WRH/EV/pm
encls.

cc: OCD-Santa Fe, New Mexico
BLM-Roswell, New Mexico

2,355-540

State of New Mexico



Commissioner of Public Lands

March 30, 1979

ALEX J. ARMIJO
COMMISSIONER

P. O. BOX 1148
SANTA FE, NEW MEXICO 87501

5028

Great Basins Petroleum Co.
1011 Gateway West Building
1801 Avenue of the Stars
Century City
Los Angeles, California 90067

Re: Antebellum Unit
Lea County, New Mexico
AUTOMATIC ELIMINATION

ATTENTION: Derwin H. Booker

Gentlemen:

We are in receipt of your letter of March 26, 1979, together with five (5) counterparts of Revised Exhibits "A" and "B" and a Schedule of Leases eliminated from the Antebellum Unit, effective as of March 1, 1979.

The Commissioner of Public Lands concurs with the description of lands eliminated and approves the elimination subject to like approval by the United States Geological Survey.

Enclosed are two sets surplus to our need.

Very truly your,

ALEX J. ARMIJO
COMMISSIONER OF PUBLIC LANDS

BY:
RAY D. GRAHAM, Director
Oil and Gas Division

AJA, RDG/s
encls.

cc: OCD-Santa Fe, New Mexico
 USGS-Roswell, New Mexico
 USGS-Albuquerque, New Mexico

Unit Name ANTIBELLUM UNIT (EXPLORATORY)
Operator GREAT BASINS PETROLEUM COMPANY
County Lea

DATE	OCC CASE NO. <u>5028</u>	EFFECTIVE DATE	TOTAL ACREAGE	STATE	FEDERAL	INDIAN-FEE	SEGREGATION CLAUSE	TERM
APPROVED	OCC ORDER NO. <u>R-4605</u>	DATE						
Commissioner	July 31, 1973	9-13-73	3,840.00	1,600.00	2,240.00	-0-	Yes	5yrs.
9-10-73								

(Tract 1 Federal Lease Not Committed)
320.00 acres

UNIT AREA
TOWNSHIP 23 SOUTH, RANGE 34 EAST, NMPM
Sections 16 and 17: All
Sections 20, 21, and 22: All
Section 29: All

*all covered by lease
21-23-34
21-34-35
21-35-36
all*

Unit Name ANTIBELLUM UNIT (EXPLORATORY)
Operator GREAT BASINS PETROLEUM COMPANY
LEA
County

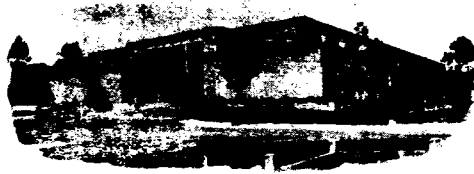
STATE TRACT NO.	LEASE NO.	INST-TUTION	SEC.	TWP.	RGE.	SUBSECTION	RATIFIED		ACREAGE	LESSEE
							DATE	ACRES	NOT RATIFIED	
8	K-3595	C.S.	22	23S	34E	NW/4 EFFECTIVE DATE.....	9-7-73	160.00		Superior Oil Company
9	L-1484	C.S.	16	23S	34E	W/2 ELIMINATED	9-6-73	320.00		Allied Chemical Corp.
10	L-1592-2	C.S.	21	23S	34E	N/2 ELIMINATED	9-3-73	320.00		Rex P. Fuller
11	L-3573-1	C.S.	29	23S	34E	NW/4 ELIMINATED	9-6-73	160.00		Allied Chemical Corp.
12	L-4333-2	C.S.	21	23S	34E	SW/4 <i>Pomavice</i> ELIMINATED	9-3-73	160.00		Rex P. Fuller
13	L-4398-2	C.S.	16	23S	34E	W/2NE/4, SE/4NE/4, E/2SE/4 ELIMINATED	9-3-73	200.00		Rex P. Fuller
14	L-4804-2	C.S.	22	23S	34E	NE/4 ELIMINATED	9-3-73	160.00		Rex P. Fuller
15	LG-50	C.S.	16	23S	34E	NE/4NE/4, W/2SE/4 ELIMINATED	9-31-73	120.00		Atlantic Richfield Co.

EFFECTIVE DATE.....



PHIL R. LUCERO
COMMISSIONER

State of New Mexico



Commissioner of Public Lands
October 14, 1975

TELEPHONE
505-827-2748

P. O. BOX 1148
SANTA FE, NEW MEXICO 87501

Great Basins Petroleum Company
1011 Gateway West- Century City
Los Angeles, California 90067

Re: Application for Initial Participating
Area, Morrow Formation, Antebellum
Unit, Lea County, New Mexico

ATTENTION: Mr. J. R. Kandle

Gentlemen:

The Commissioner of Public Lands has this date approved your Initial Participating Area, Morrow Formation, for the Antebellum Unit, Lea County, New Mexico. This approval is subject to like approval by the United States Geological Survey.

Enclosed is one approved copy for your files. In the future please submit three copies to this office.

Please remit a Three (\$3.00) Dollar filing fee.

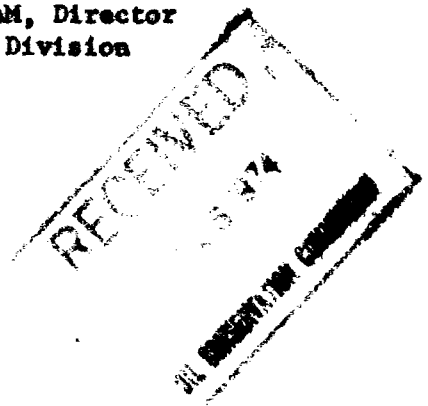
Very truly yours,

PHIL R. LUCERO
COMMISSIONER OF PUBLIC LANDS

BY:
RAY D. GRAHAM, Director
Oil and Gas Division

FRL/RDG/s
encl.
cc:

USGS-Roswell, New Mexico
OCC- Santa Fe, New Mexico ✓



GREAT BASINS PETROLEUM CO.

1011 GATEWAY WEST • CENTURY CITY • LOS ANGELES, CALIFORNIA 90067 • TELEPHONE 879-0666

CABLE: BASINOIL

October 3, 1975

Commissioner of Public Lands
State of New Mexico
P.O. Box 1148
Santa Fe, New Mexico 87501

Attention: Mr. Phil Lucero

Re: Application For Initial Participating
Area, Morrow Formation, Antebellum
Unit, Lea County, New Mexico

Gentlemen:

Great Basins Petroleum Co. is herewith submitting its application that the Geological Survey and the Commissioner of Public Lands respectfully designate the S $\frac{1}{2}$ of Section 21, T.23S., R.34E., Antebellum Unit, Lea County, New Mexico, as the Initial Participating Area for the Morrow Formation. It is Great Basins concerted analysis of available data attached hereto, that the proposed 320 acres for the Participating Area is the only area that can be reasonably proven productive, at this point in time, as so defined in paragraph 11 of the Unit Agreement for the Development of the Antebellum Unit.

Background of the Antebellum Unit Antebellum Unit #1

The Antebellum Unit Well No. 1 located in the SE/4 SW/4 Section 21, T.23S., R.34E., Lea County, New Mexico was spudded by Great Basins Petroleum Co. at 9:30 P.M. September 10, 1973. The subject well was completed on February 28, 1974 (14,210' T.D.) for a calculated absolute open flow potential of 20,785 MCFGPD (Texas method), 16,404 MCFGPD (New Mexico method) from the Morrow formation 13,454 to 13,476 feet. For inter-company designation and correlation purposes this particular sand development is referred to as the "Sleeper Sand". During this initial completion test, the 9-5/8" casing was in a state of collapse onto the 2-7/8" tubing. A rig was subsequently moved in, the casing repaired and the subject well repotentialled on June 8, 1974 for 30,000 MCFGPD (Texas method) and

October 3, 1975

Page 2

21,988 MCF/GPD (New Mexico method). On September 26, 1974 Great Basins Petroleum Co. entered into an agreement between itself and Colorado Interstate Gas Company to purchase gas from the No. 1 well. On August 18, 1975 Colorado commenced purchasing gas from the No. 1. The first 24 hour continuous production was obtained on August 20, 1975 at the rate of 9.53 MMCFPD @ 5500 PSI flowing tubing pressure, 12/64" choke. At the writing of this report, the production rate has not stabilized and is still on its initial decline. The producing data as of September 24, 1975 is 5.19 MMCFPD, 4525 PSI F.T.P., 11 BBLS-50.0° API gravity oil, 3 BWP.

Antebellum Unit #2 - Completion

Antebellum Unit Well No. 2 was spudded on May 12, 1975 in the NW/4 NE/4 Section 29 and perforated, completed (T.D. 14,318') and stimulated in the Morrow intervals 13,599'-13,609' and 13,699'-13,709' on September 15, 1975. The initial producing rate of these stimulated intervals was ± 75 BWP, ± 300 MCFPD, 350 PSI T.P., 14/64" choke. All available mud log, wireline log and correlative factors indicate that the subject well should be a commercial dry gas producer. The predominance of evaluation factors lend no reasonable explanation to the above mentioned water production. The only reasonable explanation to date appears to be to accept the historical experience in the area that this phenomenon is indicative of Morrow Sands for no explainable, rational reason to initially produce water as is this case, and to eventually, after ± 1 month, dry up and produce dry gas at commercial rates. It was Great Basins opinion prior to the actual completion that the No. 2 Well would be capable of delivering ± 1.5 -2.0 MMCFPD gas against 1000 PSI pipeline pressure. This estimation is still in effect. Likewise, based on the above reasoning, it is Great Basins intent to continue production testing the subject for at least one month or until October 15, 1975, with the anticipation that this historical experience persists and that the well will "dry up" to a commercial producer.

Antebellum Unit #2 - Geological

In the drilling of the No. 2 Well, the "Sleeper Sand" in the No. 1 Well was not encountered--a "shale-out" condition existed even though, structurally, the No. 2 Well was within ± 5 feet(!) of the No. 1 Well. The completed sand sections in the No. 2 Well were better developed than the No. 1 Well. The 13,599'-13,609' equivalent interval in the No. 1 had 5.5% porosity versus 9.5% for example on the No. 2. This close structural proximity condition is a primary factor for Great Basins' persistence on the No. 2 Well.

Justification of Participating Area

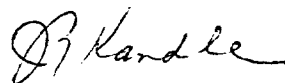
To support Great Basins' application that only the $S\frac{1}{2}$ of Section 21, T.23S., R.34E. be designated as the Initial Participating Area enclosed are (1) a geologic east-west cross-section and (2) a post Antebellum Unit #1 seismic interpretation of the area. The drilling of the No. 2 discredits the creditability of the structural interpretation via seismic, but does for purposes of this application and other interpretations have validity from a faulting interpretation.

It is Great Basins' interpretation that the geologic cross-section indicates that without a reasonable doubt that the "Sleeper Sand" is confined, at this point in time, entirely to the No. 1 Well. It is our interpretation, also, that accumulation is not structurally controlled, but rather stratigraphically controlled via permeability and shale variations. It is our further interpretation that the major faulting, as indicated by seismic, influenced this stratigraphic deposition. It is Great Basins' interpretation that the NW-SE trending fault NE of No. 1 provided a Morrow basin low at the No. 1 location for deposition of sand from the NE structural high. Consequently, the fault pattern would indicate that at this time, only the $S\frac{1}{2}$ of Section 21 can be reasonably proven to be productive. The notorious lenticular deposition characteristics of Morrow sands also infers that only the $S\frac{1}{2}$ of Section 21 can be reasonably proven to be productive. The "shale-out" of the excellent sand deposition of the "Sleeper Sand" between Well's No. 1 and 2 substantiate this reasoning with only 5 feet of structural variation.

As supported herein, Great Basins hereby submits that the Geological Survey and the Commissioner of Public Lands designate the $S\frac{1}{2}$ of Section 21, T.23S., R.34E., Lea County, New Mexico, Antebellum Unit as the Initial Participating Area for the Morrow Formation.

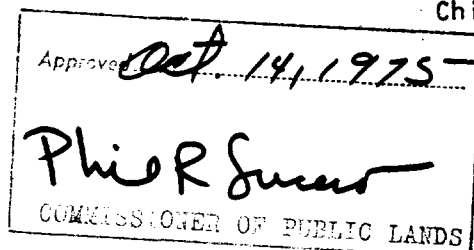
Finally, please be advised that due to casing procurement problems, Great Basins will not be able to fulfill its Proposed Plan of Development For the Calendar Year 1975 as submitted to you in a letter of October 23, 1974. Partial casing for the drilling of the No. 3 Well is in shipment transit at this time, but is not expected to be entirely in hand until December 1975. Due to uncertainties of promised deliveries, it is our decision to not commence operations until pipe stock is entirely in hand. If rig availability can be coordinated, it is Great Basins intention to commence drilling of No. 3 during January, 1975.

Sincerely yours,



J. R. Kandle
Chief Petroleum Engineer

JRK:mjt
Encls:



11-8

OIL CONSERVATION COMMISSION
P. O. BOX 2088
SANTA FE NEW MEXICO 87501

January 27, 1975

Great Basins Petroleum Co.
1011 Gateway West, Century City,
Los Angeles, California 90067

Attention: Mr. C. W. Hatten

Re: 1975 Plan of Development,
Antebellum Unit, Lea County,
New Mexico.

Gentlemen:

This is to advise that the New Mexico Oil Conservation Commission has this date approved the Plan of Development for the calendar year 1975 for the Antebellum Unit, Lea County, New Mexico, subject to like approval by the United States Geological Survey and the Commissioner of Public Lands of the State of New Mexico.

One approved copy of the plan is returned herewith.

Very truly yours,

A. L. PORTER, Jr.
Secretary-Director

ALP/JEK/og

cc: Commissioner of Public Lands
Santa Fe, New Mexico

United States Geological Survey
Roswell, New Mexico

GREAT BASINS PETROLEUM CO.

1011 GATEWAY WEST • CENTURY CITY • LOS ANGELES, CALIFORNIA 90067 • TELEPHONE 879-0666

CHARLES W. HATTEN
PRESIDENT

CABLE: BASINOIL

January 13, 1975

Commissioner of Public Lands
State of New Mexico
P.O. Box 1148
Santa Fe, New Mexico 87541
Attn: Mr. Phil Lucero

Oil Conservation Commission
State of New Mexico
P.O. Box 2088
Santa Fe, New Mexico 87541
Attn: Mr. Dan Nutter

Re: Great Basins Petroleum Co. Proposed Plan of Development
for the Calendar Year 1975 - Antebellum Unit, T.23S.,
R.34E., Lea County, New Mexico

Gentlemen:

Enclosed is a copy of Great Basins Petroleum Co's Proposed Plan of Development for the Calendar Year 1975 - Antebellum Unit, T.23S., R34E., Lea County, New Mexico, dated October 23, 1974, to the United States Department of the Interior, Roswell, N.M., and Oil Conservation Commission, Hobbs, N. M. Also enclosed is a copy of the letter of tentative approval for the Plan of Development from the Department of the Interior, Roswell, N.M.

Per the tentative letter of approval from the Department of the Interior, Great Basins hereby is respectfully requesting approval of the Plan of Development from the State of New Mexico. The relative time table for the Plan of Development as set forth in the letter of October 23, 1974, as you can see, has been extended, however, the basic plan still remains in effect. Rig availability continues to be a problem. It is anticipated, however, that a rig will be available within an estimated 60 days.

Very truly yours,


C. W. Hatten

JRK:CWH:mb
Encls.

GREAT BASINS PETROLEUM CO.

1011 GATEWAY WEST • CENTURY CITY • LOS ANGELES, CALIFORNIA 90067 • TELEPHONE 879-0666

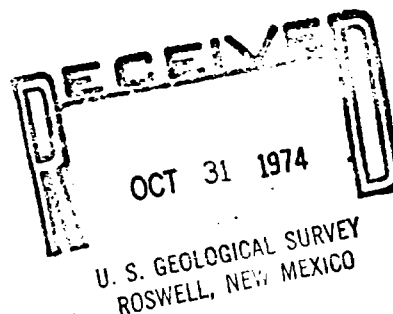
October 23, 1974

CHARLES W. HATTEN
PRESIDENT

CABLE: BASINOIL

United States Department of the Interior
Geological Survey
Drawer 1857
Roswell, New Mexico 88201
Attention: Mr. Carl C. Traywick

Oil Conservation Commission
State of New Mexico
P.O. Box 1980
Hobbs, New Mexico 88240
Attention: Mr. J. D. Ramey



Re: Great Basins Petroleum Co. Proposed Plan of Development for the Calendar Year 1975 - Antebellum Unit, T23S, R34E, Lea County, New Mexico

Gentlemen:

Per requirements, Great Basins Petroleum Co. is herewith submitting its Proposed Plans for Development for the Calendar Year 1975 for the Antebellum Unit, T23S, R34E, Lea County, New Mexico. This proposed plan of development is subject to change or alteration, however, pending the availability of rigs, miscellaneous equipment, casing and/or a revised geologic interpretation.

Background of the Antebellum Unit

The Antebellum Unit Well No. 1 located in the SE/4 SW/4 Section 21, T23S, R34E, N.M.P.M., Lea County, New Mexico was spudded by Great Basins Petroleum Co. at 9:30 P.M., September 10, 1973. The subject well was completed on February 28, 1974 (14,210' T.D.) for a calculated absolute open flow potential of 20,785 MCFGPD (Texas method). 16,404 MCFGPD (New Mexico method) from the Morrow formation 13,454 to 13,476 feet. During this initial completion test, the 9-5/8" casing was in a state of collapse onto the 2-7/8" tubing. A rig was subsequently moved in, the casing repaired and the subject well repotentialized on June 8, 1974 for 30,000 MCFGPD (Texas method) and 21,988 MCFGPD (New Mexico method). The well has been shut in since June 8, 1974 pending formulation of a gas purchasing agreement. On September 26, 1974 Great Basins Petroleum Co. entered into an agreement

October 23, 1974

between itself and Colorado Interstate Gas Company to purchase gas from the well. Colorado Interstate Gas Company is at present preparing to lay a pipeline to the Antebellum Unit #1. It is expected that gas sales will commence on or about December 1, 1974.

1975 Development Plans for the Antebellum Unit

Great Basins Petroleum Co. expects to commence drilling of the Antebellum Unit Well No. 2 on or about December 15, 1974, dependent of course on rig and casing availability. Location of the Antebellum Unit No. 2 well will be in the N/2 of Section 29, T23S, R34E. The design of the well will be such as to allow drilling and exploration into the Devonian, if structure is verified by the time the bottom of the Morrow is penetrated; however, primary completion emphasis will be in the Morrow zone.

If the present geologic picture of the Morrow is substantiated by the Antebellum Unit No. 2 well, it is planned that an Antebellum Unit No. 3 well will immediately follow the No. 2 well and will be drilled in the N/2 of Section 20, T23S, R34E, commencing on or about June 1975. It should be cautioned, however, that this third location is subject to change, based upon an updating of the geologic picture from data obtained from the No. 2 well. Structurally, the area is extremely complex from a faulting situation which makes it impossible to set forth any long range well-by-well location plan of development. These two wells at the present time are the extent of the development which Great Basins contemplates for the calendar year 1975 in the Antebellum Unit.

A participating area for the Antebellum Unit No. 1 well has not been proposed at the present time. It is planned that a participating area will be proposed approximately three months after production has commenced from the well.

If you require any further information from Great Basins, we would be more than willing to cooperate with any request.

Very truly yours,

Charles H. Hatten

CWH/JK:mr
Attach.

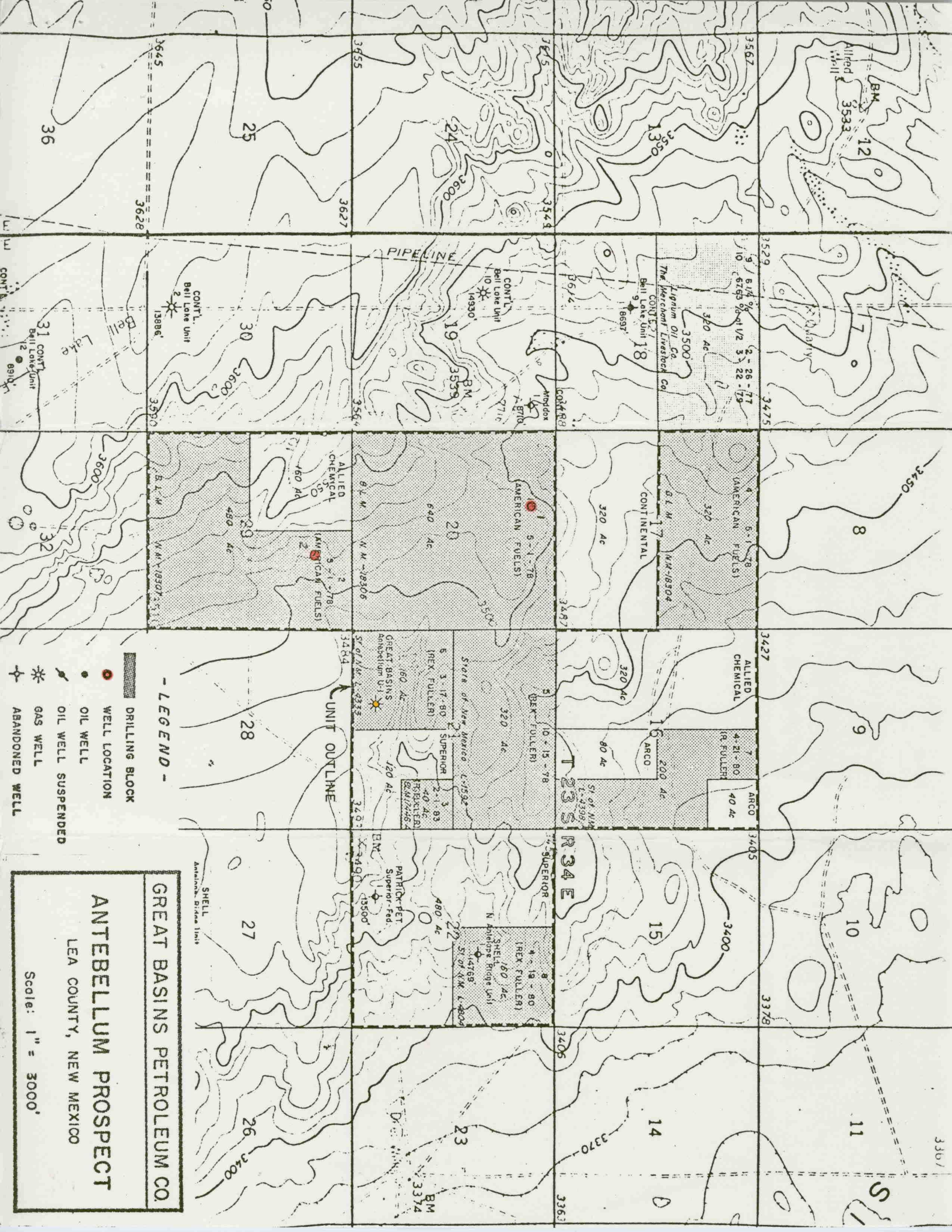
APPROVED DEC 18 1974

Carl E. Trujillo
ACTING Area Oil & Gas Supervisor
U. S. Geological Survey

Subject to like approval by the
appropriate State officials.

Approved *A. L. Porter* 27 1974
Secretary-Director

NEW MEXICO OIL CONSERVATION COMMISSION



- LEGEND -

- DRILLING BLOCK
- WELL LOCATION
- OIL WELL
- OIL WELL SUSPENDED
- GAS WELL
- ABANDONED WELL

GREAT BASINS PETROLEUM CO.

ANTEBELLUM PROSPECT

LEA COUNTY, NEW MEXICO

Scale: 1" = 3000'



United States Department of the Interior

GEOLOGICAL SURVEY

Drawer 1857
Roswell, New Mexico 88201

Quot
RECEIVED
DEC 23 1974
For Baker

December 18, 1974

Great Basins Petroleum Company
Attention: Mr. Charles Hatten
1011 Gateway West, Century City
Los Angeles, California 90067

Gentlemen:

Three approved copies of your 1975 plan of development for the Antebellum unit area, Lea County, New Mexico, are enclosed. Such plan proposes the drilling of unit well No. 2 to the Morrow and if structure is verified the well will be further drilled to the Devonian. Also proposed is the drilling of unit well No. 3 which is predicated upon geological confirmation by the information developed by the drilling of unit well No. 2.

Approval of the plan on this date is subject to like approval by the appropriate officials of the State of New Mexico.

Sincerely yours,

CARL C. TRAYWICK
Acting Area Oil and Gas Supervisor



United States Department of the Interior

GEOLOGICAL SURVEY

Drawer 1857

Roswe 1, New Mexico 88201

December 18, 1974

Great Basins Petroleum Company
Attention: Mr. Charles Hatten
1011 Gateway West, Century City
Los Angeles, California 90067

Gentlemen:

Three approved copies of your 1975 plan of development for the Antebellum unit area, Lea County, New Mexico, are enclosed. Such plan proposes the drilling of unit well No. 2 to the Morrow and if structure is verified the well will be further drilled to the Devonian. Also proposed is the drilling of unit well No. 3 which is predicated upon geological confirmation by the information developed by the drilling of unit well No. 2.

Approval of the plan on this date is subject to like approval by the appropriate officials of the State of New Mexico.

Sincerely yours,

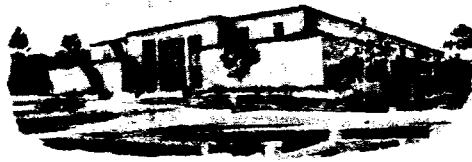
CARL C. TRAYWICK
Acting Area Oil and Gas Supervisor

cc:
NMOCC, Santa Fe (ltr only)
Com. Pub. Lands, Santa Fe (ltr only)
Hobbs (w/cy plan)

JAGillham:ds

State of New Mexico

TELEPHONE
505-827-2748



Commissioner of Public Lands

January 17, 1975

PHIL R. LUCERO
COMMISSIONER

P. O. BOX 1148
SANTA FE, NEW MEXICO 87501

Great Basins Petroleum Co.
1011 Gateway West, Century City
Los Angeles, California 90067

Re: Antebellum Unit
PLAN OF DEVELOPMENT
FOR 1975
Lea County, New Mexico

ATTENTION: Mr. Charles Hatten

Gentlemen:

The Commissioner of Public Lands has this date approved your Plan of Development and Operation for the year 1975. This plan proposes the drilling of unit well No. 2 to the Morrow and if structure is verified the well will be further drilled to the Devonian. Also proposed is the drilling of unit well No. 3 which is predicated upon geological confirmation by the information developed by the drilling of unit well No. 2. This approval is subject to like approval by the New Mexico Oil Conservation Commission. The United States Geological Survey approved the said plan on December 18, 1974.

Enclosed is one approved copy of the plan.

Please remit a Three (\$3.00) Dollar filing fee.

Very truly yours,

PHIL R. LUCERO
COMMISSIONER OF PUBLIC LANDS

BY:
RAY D. GRAHAM, Director
Oil and Gas Division

PRL/RDG/s
encl.
cc:

USGS-Roswell, New Mexico
OCC- Santa Fe, New Mexico



United States Department of the Interior

GEOLOGICAL SURVEY

Drawer 1357
Roswell, New Mexico 88201

September 13, 1973

Hunker, Fedric & Higginbotham, P.A.
P.O. Box 1837
Roswell, New Mexico 88201

Gentlemen:

One approved copy of the Antebellum unit agreement, Lea County, New Mexico, is enclosed. Such agreement has been assigned No. 14-08-0001-12409 and is effective September 13, 1973, the same date as approved.

You are requested to furnish the New Mexico Oil Conservation Commission and all other interested principals with appropriate evidence of this approval.

Sincerely yours,

CARL C. TRAYWICK
Acting Area Oil and Gas Supervisor

cc:
/NMOCC, Santa Fe (ltr only)
Com. Pub. Lands, Santa Fe (ltr only)
Area Geologist, Roswell (ltr only)
Hobbs (w/cy appln)

JFSims:ds

LAW OFFICE OF
HUNKER, FEDRIC & HIGGINBOTHAM, P.A.

210 HINKLE BUILDING
POST OFFICE BOX 1837

GEORGE H. HUNKER, JR.
DON M. FEDRIC
RONALD M. HIGGINBOTHAM

ROSWELL, NEW MEXICO 88201

TELEPHONE 622-2700
AREA CODE 505

September 11, 1973

United States Geological Survey
Department of Interior
Federal Building
Roswell, New Mexico 88201

Attention: Mr. Carl Traywick

Re: Antebellum Unit
Lea County, New Mexico

Gentlemen:

We submit the captioned unit for final approval, and enclose the following:

1. Copy of the letter dated June 17, 1971, from USGS, designating the Antebellum Unit Area as being appropriate for unitization.
2. Copy of Order dated July 31, 1973, from the Oil Conservation Commission of the State of New Mexico, approving the Antebellum Unit Agreement.
3. Original Certificate of Approval for the Antebellum Unit, dated September 10, 1973, from the Commissioner of Public Lands for the State of New Mexico.
4. Original executed Antebellum Unit Agreement (2 copies and 2 xerox copies).
5. Original executed Antebellum Unit Operating Agreement (1 copy and 1 xerox copy).
6. Copy of letter dated September 4, 1973, from Continental Oil Company, declining to commit to the Antebellum Unit.
7. Copies of letters dated September 7, 1973, to R. S. Magruder and Richard P. DeSmet and Thelma F. DeSmet, overriding royalty interest holders for certain leases located within the Antebellum Unit Area.

September 11, 1973

The Unit Agreement has been executed or ratified by all lessees of record and/or working interest owners, except Continental, who declined to commit. Those executing or ratifying are Great Basins Petroleum Co., American Fuels Corporation, Hoover H. Wright, Atlantic Richfield Company, Allied Chemical Company, Superior Oil Company, R. P. Fuller and Rex P. Fuller.

Additionally, we have attached to the Unit Agreement the Ratification of all overriding royalty interest holders, except Magruder and DeSmet, who have been contacted, but from whom we have not as yet received an answer.

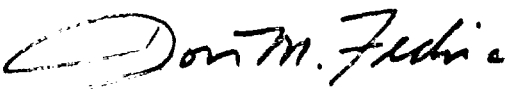
The Unit Operating Agreement has been executed or ratified by all working interest owners and lessees of record, except Continental, who declined to commit.

We trust that these enclosures and the information contained therein will be satisfactory for final Unit Approval, which we hereby request.

Thank you for your kind attention.

Yours very sincerely,

HUNKER, FEDRIC & HIGGINSON, P.A.


Don M. Fedric
Attorney for Great Basins Petroleum Co.

DMF:dd
Encls.

cc: Great Basins Petroleum Co.
cc: Mr. Bill Stapler

State of New Mexico

TELEPHONE
505-827-2748



Commissioner of Public Lands
September 10, 1973

ALEX J. ARMIJO
COMMISSIONER

P. O. Box 1148
SANTA FE, NEW MEXICO

Hunker, Fredric & Higginbotham, P.A.
210 Hinkle Building
P. O. Box 1837
Roswell, New Mexico 88204

Re: ANTEBELLUM UNIT
Las County, New Mexico

ATTENTION: Mr. George H. Hunker, Jr.

Gentlemen:

The Commissioner of Public Lands has this date approved your Antebellum Unit Agreement, Las County, New Mexico, subject to line approval by the United States Geological Survey.

Enclosed are five (5) Certificates of Approval.

Please advise this office when the United States Geological Survey has approved this unit so that we may finish processing the unit and ascertain the effective date.

Very truly yours,

RAY D. GRAHAM, Director
Oil and Gas Department

AJA/RDC/s
encls.

cc: USGS-Roswell, New Mexico
OCC- Santa Fe, New Mexico —



OIL CONSERVATION COMMISSION

STATE OF NEW MEXICO
P. O. BOX 2088 - SANTA FE
87501

I. R. TRUJILLO
CHAIRMAN

LAND COMMISSIONER
ALEX J. ARMIJO
MEMBER

STATE GEOLOGIST
A. L. PORTER, JR.
SECRETARY - DIRECTOR

July 31, 1973

Mr. George Hunker
Hunker, Federic & Higginbotham
Attorneys at Law
Post Office Box 1837
Roswell, New Mexico 88201

Re: CASE NO. 5028
ORDER NO. R-4605
Applicant:

Great Basins Petroleum

Dear Sir:

Enclosed herewith are two copies of the above-referenced Commission order recently entered in the subject case.

Very truly yours,

A. L. Porter, Jr.

A. L. PORTER, Jr.
Secretary-Director

ALP/ir

Copy of order also sent to:

Hobbs OCC x
 Artesia OCC
 Aztec OCC

Other Unit Division - State Land Office

June 25th
Geo Hunter

Great Basins
Petroleum

At Antebellum
Unit Agreement
3840 acres
state & federal
lands

~~T26S, R29E~~ Lea
T23S, R34E, Lea County