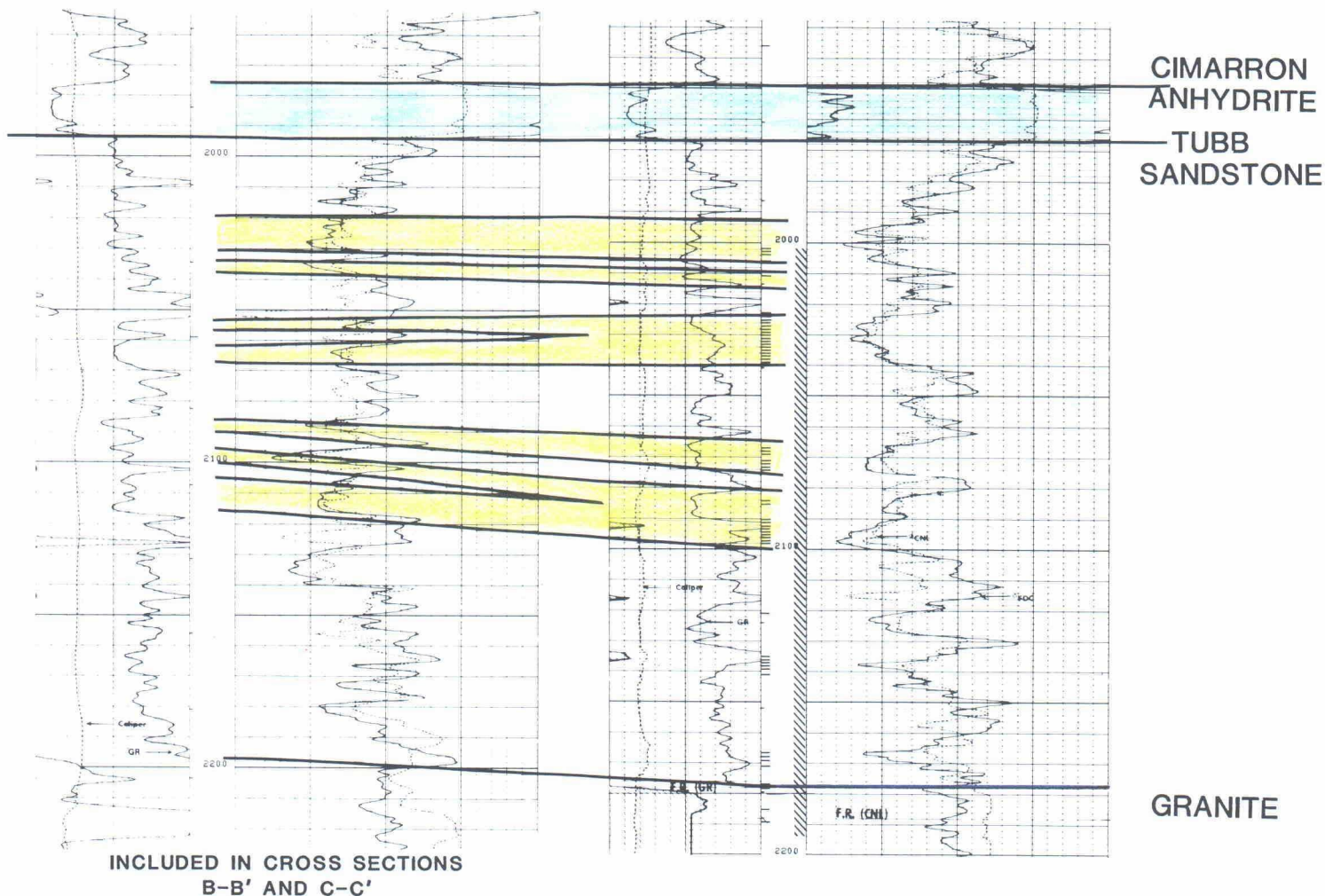


CITIES SERVICE
STATE "DO" NO. 1
T18N, R30E, SEC. 20
SCHLUMBERGER NEUTRON DENSITY

CITIES SERVICE
STATE "DS" NO. 1
T18N, R30E, SEC. 29
SCHLUMBERGER NEUTRON DENSITY



CORED INTERVAL

PERMEABILITY > 5 md

CORRELATION OF LOG RESPONSE
AND CORE PERMEABILITY
WEST BRAVO DOME AREA

GEOLOGY: R. EGG

SEPT., 1984

Ex. 4