

Spur Oil Inc.
Samantha #1 L-26-28N-1E

Spur Oil Inc.
Samantha' #1, L-26-28N-01E
Rio Arriba County
Wildcat Gallup

PRESUMED DOWNHOLE CONDITIONS

1. 9-7/8" hole to 85'.
2. 7-5/8" 26# csg. set @ 85'. Cmt. circulated to surface.
3. 6 1/2" hole to 1658'.
4. 4 1/2" 10.5# csg. set @ 1685'. Cmt. circulated to surface.
5. TD @ 1685'.

DIVISION APPROVED PLUGGING PROGRAM

1. Go in hole with tubing to 1685' and set a cement plug 1685' - 1500' inside casing.
2. Wait on cement a minimum of 4 hours.
3. Go in hole with tubing and tag plug. If plug is above 1550', go to step 4. If not, fill to 1500'.
4. Set a cement plug 150' to surface inside casing.
5. Set dry hole marker.
6. Fill pits, clean and level location.

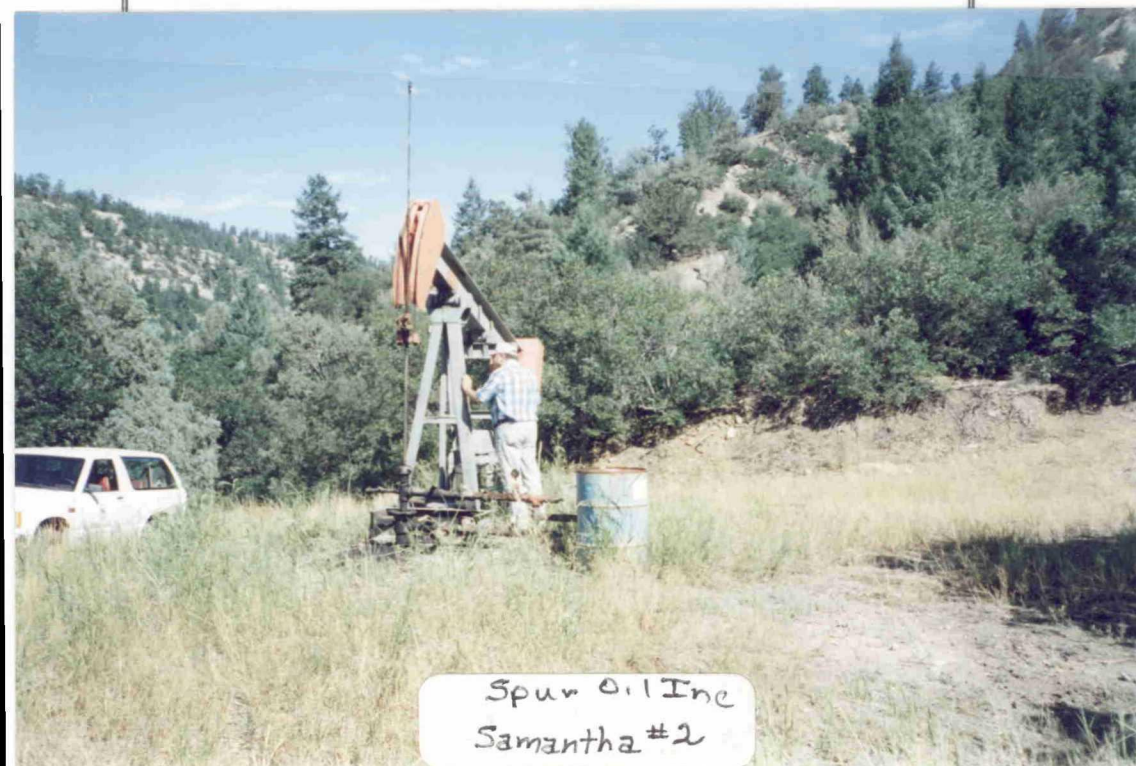
*All plugs will be with neat cement with or without an accelerator.

OPERATOR Spur Oil Inc		PROPERTY NAME Samantha		Well No. 2
DATE 11-9-94	LOCATION ULSTR) K-26-28N-1E		FOOTAGE 1985 FSL 2290 FWL	
API NO. 30-039-23444		POOL Undes. Dakota		Oct. 1984
Tops				
Gallup 750				
Greenhorn 1704				
Dakota				
7 5/8" 26" 9 7/8 hole 75' 64 cu. ft. circ.				
4 1/2" 10.5 6 1/4 hole 1780 256 cu. ft. circ.				
Perfs 1708-1748				
CASING RECORD:				

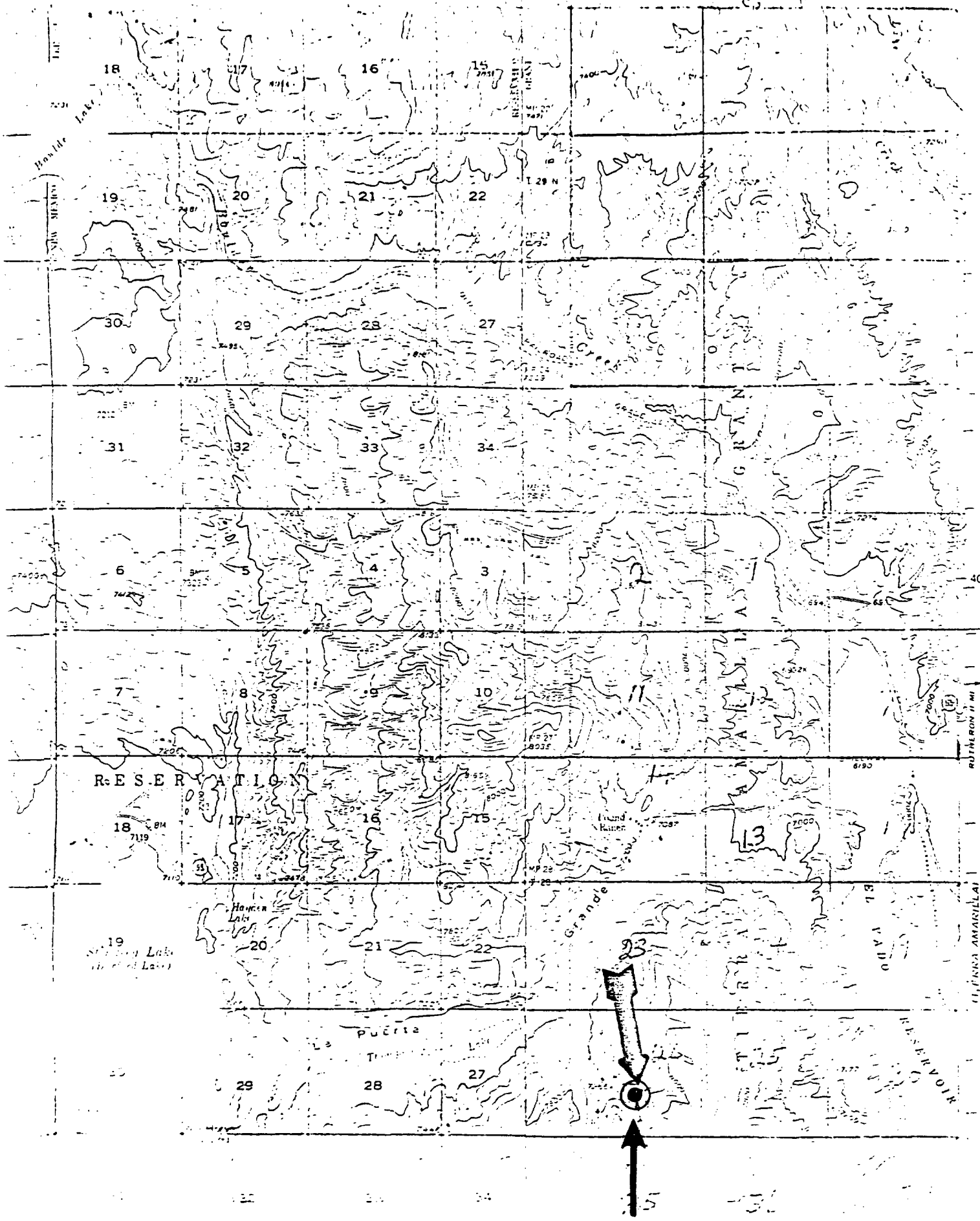
75'
7 5/8" 26"
9 7/8 hole
64 cu. ft.
circ.

1708
1748

1780'
4 1/2 10.5
6 1/4 Hole
256 cu. ft.
circ.



Spur Oil Inc
Samantha #2



Spur Oil Inc.
Samantha #2 K-26-28N-1E

Spur Oil Inc.
Samantha #2, K-26-28N-01E
Rio Arriba County
Undesignated Dakota

PRESUMED DOWNHOLE CONDITIONS

1. 9-7/8" hole to 75'
2. 7-5/8" 26# csg. set @ 75'. Cmt. circulated to surface.
3. 6 1/2" hole to 1780'.
4. 4 1/2" 10.5# csg. set @ 1775. Cmt. circulated to surface.
5. PBTD @ 1775'.
6. TD @ 1780'.

DIVISION APPROVED PLUGGING PROGRAM

1. Go in hole with tubing to 1775' and set a cement plug 1775' - 1600' inside casing.
2. Wait on cement a minimum of 4 hours.
3. Go in hole with tubing and tag plug. If plug is above 1650' go to step 4. If not, fill to 1600'.
4. Set a cement plug 150' to surface inside casing.
5. Set a dry hole marker.
6. Fill pits, clean and level location.

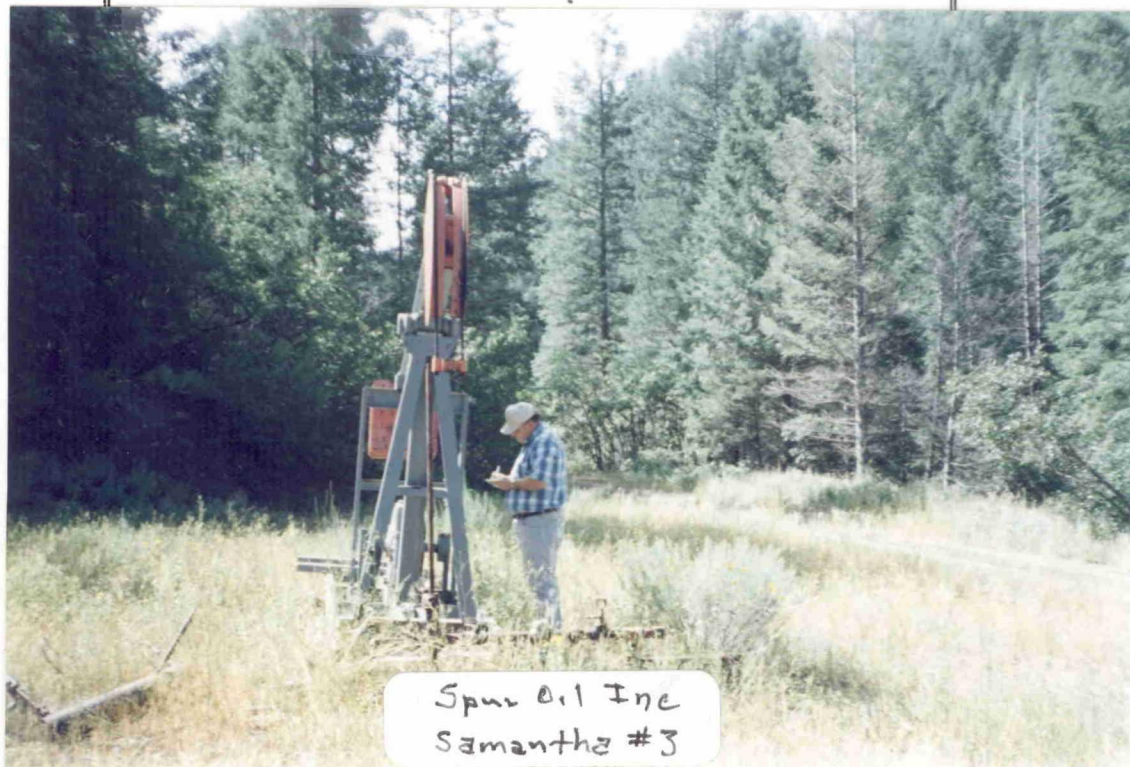
*All plugs will be with neat cement with or without an accelerator.

OPERATOR Spur Oil Inc		PROPERTY NAME Samantha	Well No. 3
DATE 11-9-94	LOCATION ULSTR) N-26-28N-1E	FOOTAGE 1105 FSL 2490 FWT	
API NO. 30-039-23446		POOL Undes. Dakota	
Tops			
Gallup 984			
Greenhorn 1599			
Dakota			
7 ⁵ / ₈ 2 ¹ / ₂ " 9 ⁷ / ₈ hole 78' 64 cu. ft cement circ.			
4 ¹ / ₂ " 10.5 6 ¹ / ₄ hole 1777' 256 cu. ft cement circ.			
Perfs 1708-1748			
CASING RECORD:			

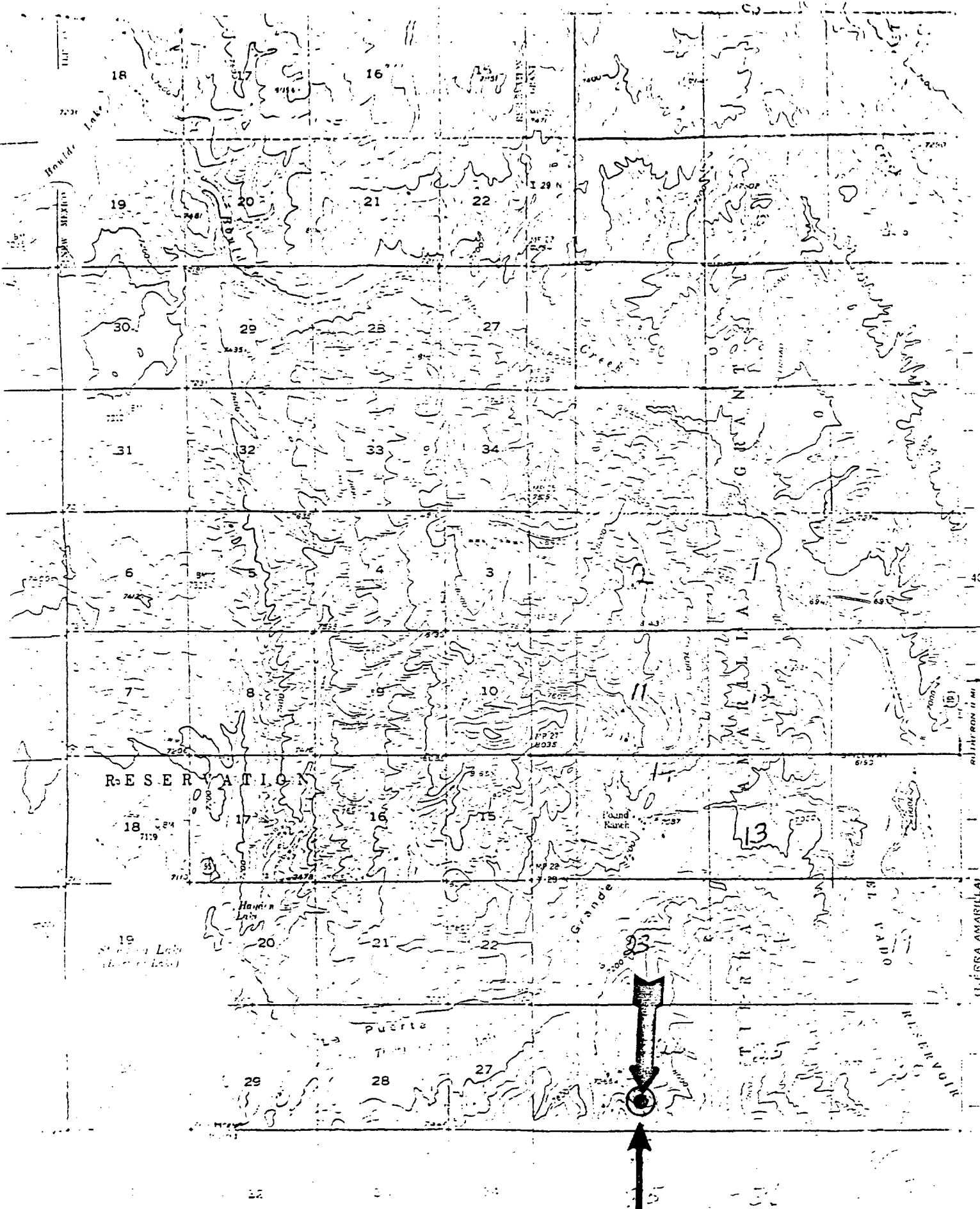
78'
7⁵/₈ 2¹/₂"
9⁷/₈ Hole
64 cu ft
circ.

1708
1748

1778 ft.
4¹/₂ 10.5
6¹/₄ Hole
256 cu. ft.
circ.



Spur Oil Inc
Samantha #3



Spur Oil Inc.
Samantha #3 N-26-28N-1E

Spur Oil Inc.
Samantha #3, N-26-28N-01E
Rio Arriba County
Undesignated Gallup

PRESUMED DOWNHOLE CONDITIONS

1. 9-7/8" hole to 78'.
2. 7-5/8" 26# csg. set @ 76'. Cmt. circulated to surface.
3. 6 1/2" hole to 1778'.
4. 4 1/2" 10.5 # csg. set @ 1777'. Cmt. circulated to surface.
5. TD @ 1778'.

DIVISION APPROVED PLUGGING PROGRAM

1. Go in hole with tubing to 1777'. Set a cement plug 1777' to 1600' inside casing.
2. Wait on cement a minimum of 4 hours.
3. Go in hole with tubing and tag plug. If plug is above 1650' go to step 4. If not, fill to 1600'.
4. Set a cement plug 150' to surface inside casing.
5. Set dry hole marker.
6. Fill pits, clean and level location.

*All plugs will be with neat cement with or without an accelerator.

WELL PROFILE

7" @ 156'

4 1/2 @ 965'

TD 1445'

WELL BORE DIAMETER

OPERATOR Spur Oil Inc.

WELL # Gonzales 13 #1

U-S-T-R I-13-31N-1E

COUNTY Rio Arriba

FIELD W/C

DATE _____

SIZE	7"	4 1/4"	2 3/8"
WEIGHT	17#	9.5	-
DEPTH	156	965	-
Cu. Ft. 547 CFT.	26	131	-
TOP CFT.	To Surface	-	-

ITEM NO.

EQUIPMENT AND SERVICES

6 1/4" hole to TD

COMMENTS: No reports to indicate if well
was perforated & stimulated.

PREPARED BY: Gholson



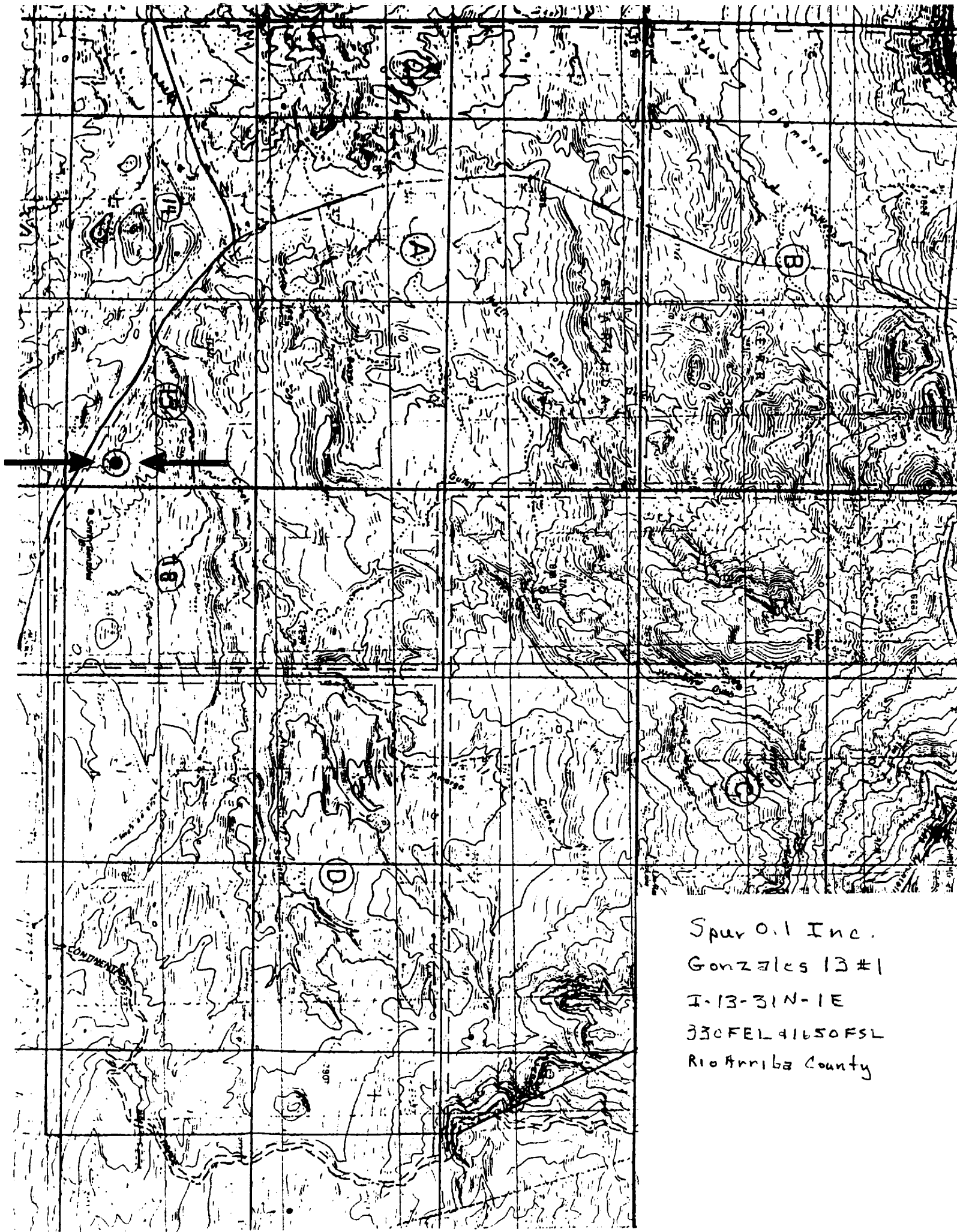
Spur Oil Inc
Gonzales 13-1

Spur Oil Inc.
Gonzales 13 #1 I-13-31N-1E

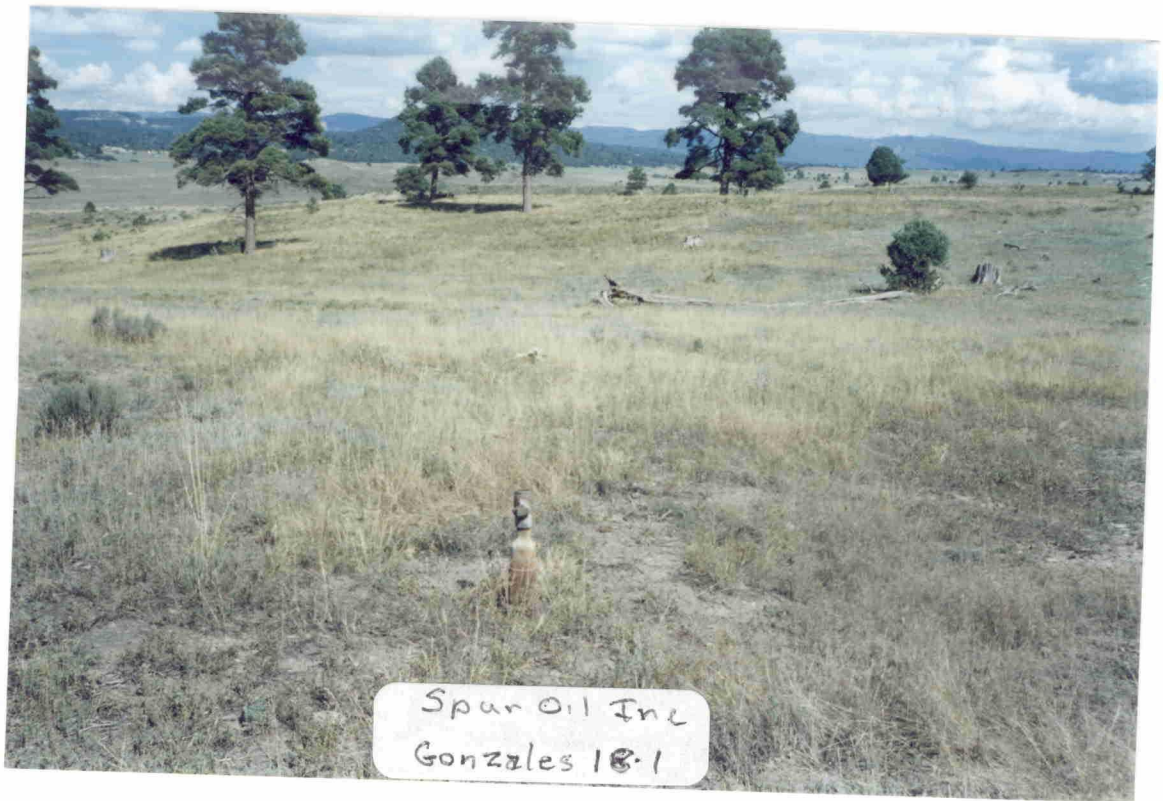
DIVISION APPROVED PLUGGING PROGRAM

- 1 Drill out and/or clean out hole to TD at 1445'.
- 2 Set a cement plug 1445'-1295'.
- 3 Pull out of cement and reverse out tubing to make sure it is clear. WOC a minimum of 4 hours and tag plug. If top of cement is above 1345' go to step 4. If not, fill to 1295'.
4. Pull out of hole to casing shoe at 965 and set a cement plug 965'-765' inside casing.
5. Pull out of hole to 200' and set a cement plug 200'-100' inside casing.
6. Come out of hole and set top plug and dry hole marker with a minimum of 10 sacks of cement.
7. Fill pits, clean and level location.

All plugs to be with neat cement with or without an accelerator.



Spur Oil Inc.
Gonzales 13 #1
T-13-31N-1E
330FEL 41650FSL
Rio Arriba County



Spur Oil Inc
Gonzales 18-1

TD 1380--

SIZE	7" 4 1/2"	2 3/8
WEIGHT	17# 9.5	4.6#
DEPTH	162	656 -
Cu Ft. SH. CIT.	26	87
TOF CIT.	To Surface	To Surface

[illegible]

COMMENTS: Lost bottom 500' of drill string -
top of fish 880'.

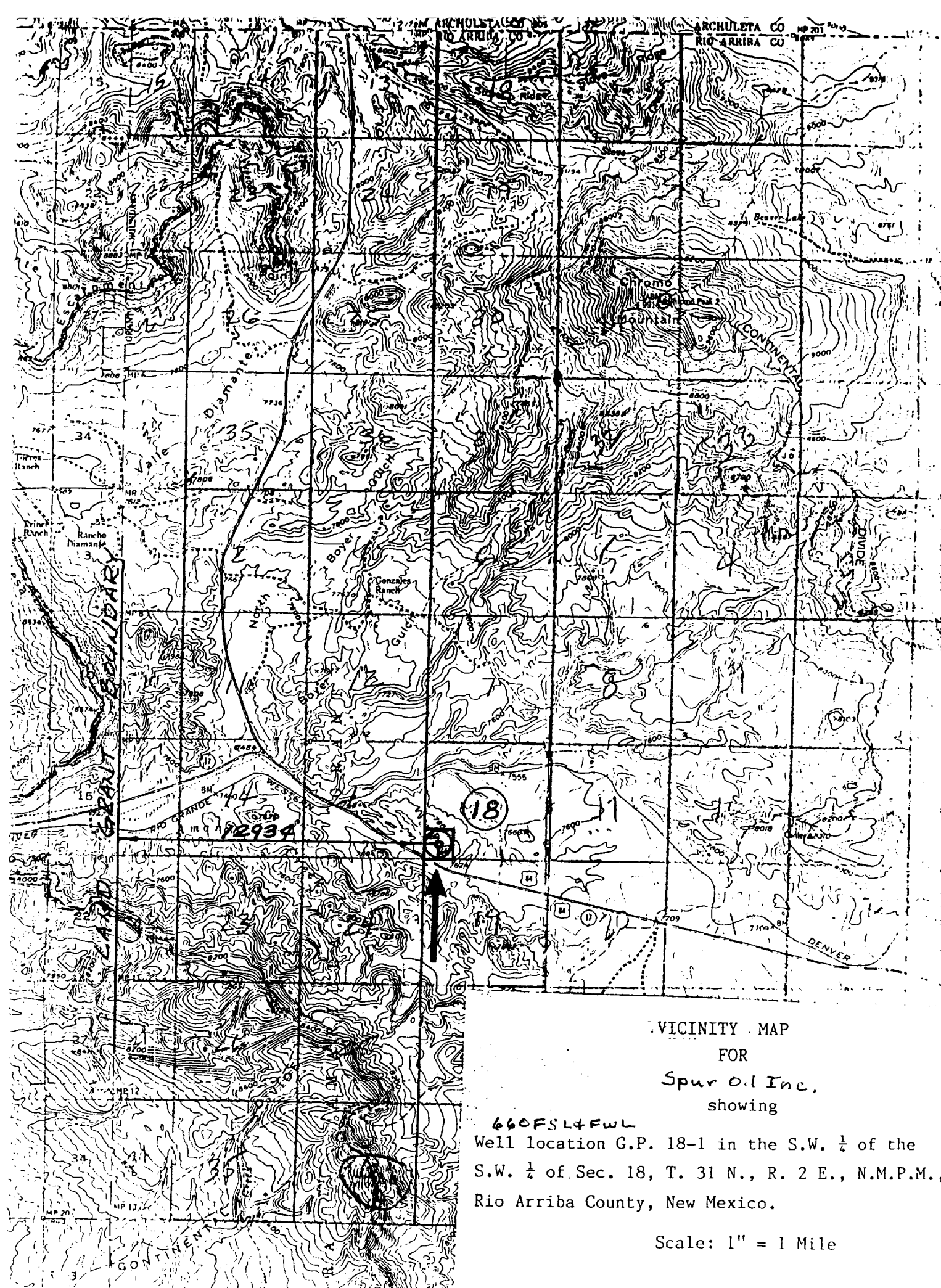
PREPARED BY: Gholson

Spur Oil Inc.
Gonzales 18 #1 M-18-31N-2E

DIVISION APPROVED PLUGGING PROGRAM

1. Drill out and/or clean out hole to top of fish at 880'.
2. Set a cement plug inside casing 880'-450' to cover casing stub and perforations.
3. Come out of hole to 210' and set a cement plug from 210' to 100' inside casing.
4. Set a top plug and dry hole marker with a minimum of 10 sacks of cement.
5. Fill pits, clean and level location.

All plugs to be with neat cement with or without an accelerator.





Spur 0.1 Inc
Quintan Ranch #1

OPERATOR SPUR OIL INC.		PROPERTY NAME QUINLAN RANCH		WELL NO. 1
DATE 8-31-95	LOCATION ULSTR) H-23-32N-02E		FOOTAGE 2000 ' FNL & 100 ' FWL	
API NO. 30-039-22135		POOL ELEVATION 8705 FT.		
Tops				
POINT LOOKOUT 500 FT.				
GALLUP 1380 FT.				
GREENHORN 2145 FT.				
CASING RECORD		T.O.C. <u>740'</u> ? <u>2340'</u> Perf <u>3370'</u> <u>2450'</u> PBTD <u>3650'</u> <u>2698'</u> <u>2830'</u> <u>3188'</u> <u>3320'</u> <u>3558'</u> <u>3690'</u> <u>3865'</u>		
8 5/8 SURFACE 513 FT. CEMENT 448 CU. FT. CIRC.				
5 1/2 3865 FT. ??? CEMENT 1019 CU FT. TOC 740 FT.				
PBTD 2450 FT. ????				
Current Wellbore				

Spur Oil Inc.
Quinlan Ranch #1
H-23-32N-02E
2000' FNL & 100' FWL

Downhole Equipment
Unknown

Division Approved Plugging Procedure

1. * Go in hole and tag PBTD. If T.D. is 3865 ft. Spot the following plugs.
 Plug 1 3690' - 3558' 15 sxs.
 Plug 2 3320' - 3188' 15 sxs.
 Plug 3 2830' - 2698' 15 sxs.
 Plug 4 2650' - 2429' 25 sxs.
2. If PBTD is 2450' or above spot a plug at 2195' to 2095' WOC & tag cement. If cement is at 2095' or above go to step 3 if not fill csg. To 2095'.
3. Pull up to 1430' & spot a plug to 1330'.
4. GIH with wireline and perforate two holes at 550'.
5. Bullhead cement down 5 ½ csg. & circ. Cement to the surface.
6. Install dryhole marker & restore location.

* Note PBTD has not been varified. If TD is found at 2450' use procedure outlined in steps 2-6. If TD is 3865' use steps 1-6.

Spur 0.1 Inc.

No.1 Quinlan Ranch
Tierra Amarilla Grant
Rio Arriba County, N.M.

2000' FNL & 100' FWL H. 23-32 N-2E

(CHAMA PEAK) 356

MP 202+5.10

S44°25'05"E

No.1 Quinlan

COLORADO
NEW MEXICO

Tuck Canyon

Rabbit View
Peak

Chama

Stockard
G

Landing
Strip



Spur Oil Inc.
Quinlan #2
N-19-31N-03E

OPERATOR SPUR OIL INC.		PROPERTY NAME QUINLAN RANCH	WELL NO. 2
DATE 8-31-95	LOCATION ULSTR) N-19-31N-03E	FOOTAGE 450 FSL & 2200 FWL	
API NO. 30-039-24504		POOL WILDCAT ENTRADA ELEVATION 7884 FT.	

Tops	
DAKOTA 358 FT.	
MORRISON 690 FT.	
TODILTO 1354 FT.	
ENTRADA 1412 FT.	
CASING RECORD 8 5/8 24# SURFACE 42 FT. CEMENT CIRC. 5 1/2 17# 1310 FT. CEMENT CIRC. T.D. 1461 FT. PBTD 550 FT. ???? PERFS. 375' - 381', 452' - 457' & 1220' - 1232' WELL MAY BE PLUGGED BACK TO 550' ??????? <p style="text-align: center;">Current Wellbore</p>	

Spur Oil Inc.
Quinlan Ranch # 2
N-19-31N-03E
450' FSL & 2200' FWL

Downhole Equipment
Unknown

Division Approved Plugging Procedure

1. Go in hole and tag PBTD. If T.D. is 1461 ft. Spot the following plugs.
2. Spot a cement plug* from 1461'- 1170 '. WOC & tag cement at 1170' or above.
3. Pump down the 5 ½ casing and try to establish circulation out the BH. If circulation is established go to step 4. If no circulation is established go to step 6.
4. Pull and lay down tubing to 507' and spot a cement plug from 507' to the surface.
5. Pull tubing and bullhead cement down the 5 ½ and circulate cement through BH.
6. If cement will not circulate WOC and tag cement.
7. If cement is below 8 5/8 shoe at 42' GIH with wireline and perforate 2 holes at 92'.
8. Bullhead cement down 5 ½ casing and circulate cement to the surface.
9. Install dryhole marker & restore location.

Note PBTD has not been verified. If TD is found at 550' use procedure outlined in steps 3-9. If TD is 1461' use steps 1- 9.

* Calcium Chloride may be used as a accelerator.

C-115 - Operator's Monthly Report (Continuation)

DISPOSITION OF OIL, GAS, AND WATER																
PRODUCTION																
INJECTION																
7																
8																
9																
10																
11																
12																
13																
14																
15																
16																
17																
18																
19																
20																
21																
22																
23																
On hand at end of month																
24																
25																
26																
27																
28																
29																
30																
31																
32																
33																
34																
35																
36																
37																
38																
39																
40																
41																
42																
43																
44																
45																
46																
47																
48																
49																
50																
51																
52																
53																
54																
55																
56																
57																
58																
59																
60																
61																
62																
63																
64																
65																
66																
67																
68																
69																
70																
71																
72																
73																
74																
75																
76																
77																
78																
79																
80																
81																
82																
83																
84																
85																
86																
87																
88																
89																
90																
91																
92																
93																
94																
95																
96																
97																
98																
99																
100																
101																
102																
103																
104																
105																
106																
107																
108																
109																
110																
111																
112																
113																
114																
115																
116																
117																
118																
119																
120																
121																
122																
123																
124																
125																
126																
127																
128																
129																
130																
131																
132																
133																
134																
135																
136																
137																
138																
139																
140																
141																
142																
143																
144																
145																
146																
147																
148																
149																
150																
151																
152																
153																
154																
155																
156																
157																
158																
159																
160																
161																
162																
163																
164																
165																
166																
167																
168																
169																
170																
171																
172																
173																
174																
175																
176																
177																
178																
179																
180																
181																
182																
183																
184																
185																
186																
187																
188																
189																
190																
191																
192																
193																
194																
195																
196																
197																
198																
199																
200																
201																
202																
203																
204																
205																
206																
207																
208																
209																
210																
211																
212																
213																
214																
215																
216																
217																
218																
219																
220																
221																
222																
223																
224																
225																
226																
227																
228																
229																
230																
231																
232																
233																
234																
235																
236																
237																
238																
239																
240																
241																
242																
243																
244																
245																
246																
247																
248																
249																
250																
251																
252																
253																
254																
255																
256																
257																
258																
259																
260																
261																
262																
263																
264																
265																
266																
267																
268																
269																
270																
271																
272																
273																
274																
275																
276																
277																
278																
279																
280																
281																
282																
283																
284																
285																
286																
287																
288																
289																
290																
291																
292																
293																
294																
295																
296																
297																
298																
299																
300																
301																
302																
303																
304																
305																
306																
307																
308																
309																
310																
311																
312																
313																
314																
315																
316																
317																
318																
319																
320																
321																
322																
323																
324																
325																
326																
327																
328																
329																
330																
331																
332																
333																
334																
335																
336																
337																
338																
339																
340																
341																
342																
343																
344																
345																
346																
347																
348																
349																
350																
351																
352																
353																
354																
355																
356																
357																
358																
359																
360																
361																
362																
363																
364																
365																
366																
367																
368																
369																
370																
371																
372																
373																
374																
375																
376																
377																
378																
379																
380																
381																
382																
383																
384																
385																
386																
387																
388																
389																
390																
391																
392																
393																
394																
395																
396																
397																
398																
399																
400																
401																
402																
403																
404																
405																
406																
407																
408																
409																
410																
411																
412																
413																
414																
415																
416																
417																
418																
419																
420																
421																
422																
423																
424																
425																
426																
427																
428																
429																
430																
431																
432																
433																
434																
435																
436																
437																
438																
439																
440																
441																
442																
443																
444																
445																
446																
447																
448																
449																
450																
451																
452																
453																
454																
455																
456																
457																
458																
459																
460																
461																
462																
463																
464																
465																
466																
467																
468																
469																
470																
471																
472																
473																
474																
475																
476																
477																
478																
479																
480																
481																
482																
483																
484																
485																
486																
487																
488																
489																
490																
491																
492																
493																
494																
495																
496																
497																
498																
499																
500																
501																
502																
503																
504																
505																
506																
507																
508																
509																
510																
511																
512																
513																
514																
515																
516																
517																
518																
519																
520																
521																
522																
523																
524																
525																
526																
527																
528																
529																
530																
531																
532																
533																
534																
535																
536																
537																
538																
539																
540																
541																
542																
543																
544																
545																
546																
547																
548																
549																
550																
551																
552																
553																
554																
555																
556																
557																
558																
559																
560																
561																
562																
563																
564																
565																
566																
567																
568																
569																
570																
571																
572																
573																
574																
575																
576																
577																
578																
579																
580																
581																
582																
583																
584																
585																
586																
587																
588																
589																
590																
591																
592																
593																
594																
595																
596																
597																
598																
599																
600																
601																
602																
603																
604																
605																
606																
607																
608																
609																
610																
611																
612																
613																
614																
615																
616																
617																
618																
619																
620																
621																
622																
623																
624																
625																
626																
627																
628																
629																
630																
631																
632																
633																
634																
635																
636																
637																
638																
639																
640																
641																
642																
643																
644																
645																
646																
647																
648																
649																
650																
651																
652																
653																
654																
655																
656																
657																
658																
659																
660																
661																
662																
663																
664																
665																
666																
667																
668																
669																
670																
671																
672																
673																
674																
675																
676																
677																
678																
679																
680																
681																
682																
683																
684																
685																
686																
687																
688																
689																
690																
691																
692																
693																
694																
695																
696																
697																
698																
699																
700																
701																
702																
703																
704																
705																
706																
707																
708																
709																
710																
711																
712																
713																
714																
715																
716																
717																
718																
719																
720																
721																
722																
723																
724																
725																
726																
727																
728																
729																
730																
731																
732																
733																
734																
735																
736																
737																
738																
739																
740																
741																
742																
743																
744																
745																
746																
747																
748																
749																
750																
751																
752																
753																
754																
755																
756																
757																
758																
759																
760																
761																
762																
763																
764																
765																
766																
767																
768																
769																
770																
771																
772																
773																
774																
775																
776																
777																
778																
779																
780																
781																

8	From
---	------

1

1

11

STATE OF NEW MEXICO

\$50,000.00 BLANKET PLUGGING BOND

BOND NO. LSC 659001

(For Use of Surety Company)

File with Oil Conservation Division, P.O. Box 2088, Santa Fe 87501

KNOW ALL MEN BY THESE PRESENTS:

That SPUR OIL, INC., (An individual) (a partnership) (a corporation organized in the State of TEXAS, with its principal office in the city of DALLAS, State of TEXAS, and authorized to do business in the State of New Mexico), as PRINCIPAL, and OLD REPUBLIC INSURANCE COMPANY, a corporation organized and existing under the laws of the State of PENNSYLVANIA, and authorized to do business in the State of New Mexico, as SURETY, are held firmly bound unto the State of New Mexico, for the use and benefit of the Oil Conservation Division of New Mexico pursuant to Section 65-3-11, New Mexico Statutes Annotated, 1953 Compilation, as amended, in the sum of Fifty Thousand Dollars (\$50,000.00) lawful money of the United States, for the payment of which, well and truly to be made, said PRINCIPAL and SURETY hereby bind themselves, their successors and assigns, jointly and severally, firmly by these presents.

The conditions of this obligation are such that:

WHEREAS, The above principal has heretofore or may hereafter enter into oil and gas leases, or carbon dioxide (CO₂) gas leases, or helium gas leases with the State of New Mexico; and

WHEREAS, The above principal has heretofore or may hereafter enter into oil and gas leases, or carbon dioxide (CO₂) gas leases, or helium gas leases on lands patented by the United States of America to private individuals, and on lands otherwise owned by private individuals; and

WHEREAS, The above principal, individually, or in association with one or more other parties, has commenced or may commence the drilling of wells to prospect for and produce oil or gas, or carbon dioxide (CO₂) gas or helium gas, or does own or may acquire, own or operate such well, or such wells started by others on land embraced in said State oil and gas leases, or carbon dioxide (CO₂) gas leases, or helium gas leases, and on land patented by the United States of America to private individuals, and on land otherwise owned by private individuals, the identification and location of said well being expressly waived by both principal and surety hereto.

NOW, THEREFORE, If the above bounden principal and surety or either of them or their successors or assigns, or any of them, shall plug all of said wells when dry or when abandoned in accordance with the rules, regulations, and orders of the Oil Conservation Division of New Mexico in such way as to confine the oil, gas, and water in the strata in which they are found, and to prevent them from escaping into other strata;

THEN, THEREFORE, This obligation shall be null and void; otherwise and in default of complete compliance with any and all of said obligations, the same shall remain in full force and effect.

PROVIDED, HOWEVER, That thirty (30) days after receipt by the Oil Conservation Division of New Mexico of written notice of cancellation from the surety, the obligation of the surety hereunder shall terminate as to property or wells acquired, drilled, or started after said thirty (30) day period but shall continue in effect, notwithstanding said notice, as to property or wells theretofore acquired, drilled or started.

Re
6-20-88
139-74-05

RECEIVED
JAN 1 1989
OIL CON. DIV.
SFE

OLD REPUBLIC INSURANCE COMPANY

POWER OF ATTORNEY

KNOW ALL MEN BY THESE PRESENTS: That OLD REPUBLIC INSURANCE COMPANY, a Pennsylvania stock insurance corporation, do hereby make, constitute and appoint:

TA HOLLOWAY, ANNIE TUTT, LISA ROLLINS, TENA B. WILSON, NITA STANBERRY, JARA STEVENS, DONNA BERRY, EACH OF DALLAS, TX

as true and lawful Attorney(s)-in-Fact, with full power and authority for and on behalf of the company as surety, to execute and deliver and to bind OLD REPUBLIC INSURANCE COMPANY thereby, and all of the acts of said Attorneys-in-Fact, pursuant to these presents, the seal of the company thereto (if a seal is required), bonds, undertakings, recognizances or other written obligations in the nature thereof follows:

ALL WRITTEN INSTRUMENTS IN AN AMOUNT NOT TO EXCEED AN AGGREGATE OF TWO HUNDRED FIFTY THOUSAND (\$250,000) FOR ANY SINGLE OBLIGATION, REGARDLESS OF THE NUMBER OF INSTRUMENTS ISSUED FOR THE OBLIGATION. This appointment is made under and by authority of the board of directors at a special meeting held on May 29, 1986. This Power of Attorney is signed and sealed by facsimile under and by the authority of the following resolutions adopted by the board of directors of the OLD REPUBLIC INSURANCE COMPANY on May 29, 1986.

RESOLVED FURTHER, that the chairman, president or any vice-president of the Company's surety division, in conjunction with the secretary or any assistant secretary of the Company, be and hereby are authorized and directed to execute and deliver, to such person as such officers of the Company may deem appropriate, Powers of Attorney in the form presented to and attached to the minutes of this meeting, authorizing such persons to execute and deliver and affix the seal of the Company to bonds, undertakings, recognizances and suretyship obligations of all kinds, other than bail bonds, bank depository bonds, mortgage deficiency bonds, mortgage guaranty bonds, guarantees of installment paper and note guaranty bonds. The said officers may revoke any Power of Attorney previously granted to any such person. The authority of any Power of Attorney granted by any such officer of the Company as aforesaid shall not exceed five million dollars (\$5,000,000.00) except (a) bonds required to be filed as open penalty bonds, and (b) bonds filed with any court or governmental authority requiring an unlimited penalty in bonds filed in that court.

RESOLVED FURTHER, that any bond, undertaking, recognition, or suretyship obligation shall be valid and binding upon the Company (i) when signed by the chairman, president or any vice president of the Company's surety division and attested and sealed (if a seal be required) by any secretary or assistant secretary, or (ii) when signed by a duly authorized attorney-in-fact and sealed with the seal of the Company (if a seal be required).

RESOLVED FURTHER, that the signature of any officer designated above, and the seal of the Company, may be affixed by facsimile to any Power of Attorney or certification thereof authorizing the execution and delivery of any bond, undertaking, recognition, or other suretyship obligation of the Company, and such signature and seal when so used shall have the same force and effect as though manually affixed.

IN WITNESS WHEREOF, OLD REPUBLIC INSURANCE COMPANY has caused these presents to be signed by its proper officer, and its corporate seal to be affixed this 2ND day of DECEMBER, 1987.

Patricia A. Montag
Asst. Secretary
STATE OF WISCONSIN, COUNTY OF WAUKESHA - SS
On this 2ND day of DECEMBER, 1987, personally came before me, DONALD L. BOWEN, Vice President of the OLD REPUBLIC INSURANCE COMPANY who executed the above instrument, and they each acknowledged the execution of the same, and being by me duly sworn, did severally depose and say, that they are the said officers of the corporation aforesaid, and that the seal affixed to the above instrument is the seal of the corporation, and that said corporate seal and their signatures as such officers were duly affixed and subscribed to the said instrument by the authority of the board of directors of said organization.

Donald L. Bowen
Vice President
DONALD L. BOWEN
Notary Public
My commission expires: 02/05/89

Jean M. Stutter
Notary Public
My commission expires: 02/05/89

CERTIFICATE
I, the undersigned, assistant secretary of the OLD REPUBLIC INSURANCE COMPANY, a Pennsylvania corporation, CERTIFY that the foregoing and attached power of attorney remains in full force and has not been revoked; and furthermore, that the Resolutions of the board of directors set forth in the Power of Attorney, are now in force.

Signed and sealed at the City of Brookfield this 9TH day of JUNE, 1988
Audrey M. Shaw
Assistant Secretary



SPUR OIL, INC.

3109 N. HASKELL ST
DALLAS, TEXAS 75204

Address

By

Signature

Title

(Note: Principal, if corporation, affix corporate seal here.)

OLD REPUBLIC INSURANCE COMPANY

1221 RIVER BLVD
DALLAS, TEXAS 75247

Address

By

Attorney-in-Fact

(Note: Corporate surety affix corporate seal here.)

ACKNOWLEDGEMENT FORM FOR NATURAL PERSONS

STATE OF _____)
COUNTY OF _____) ss.

RECEIVED
JAN 13 1995

On this _____ day of _____, 19____, before me personally appeared _____, to me known to be the person (persons) described in and who executed the foregoing instrument and acknowledged that he (they) executed the same as his (their) free act and deed.

IN WITNESS WHEREOF, I have hereunto set my hand and seal on the day and year in this certificate first above written.

Notary Public

My Commission expires _____

ACKNOWLEDGEMENT FORM FOR CORPORATION

STATE OF TEXAS)
COUNTY OF DALLAS) ss.

On this 9TH day of JUNE, 1988, before me personally appeared FRED B. SHELTON, JR., to me personally known who, being by me duly sworn, did say that he is VICE PRESIDENT - COUNSEL of SPUR OIL INC and that the foregoing instrument was signed and sealed on behalf of said corporation by authority of its board of directors, and acknowledged said instrument to be the free act and deed of said corporation.

IN WITNESS WHEREOF, I have hereunto set my hand and seal on the day and year in this certificate first above written.

Notary Public

My Commission expires 3/31/89 MALLERY M. MOORE

ACKNOWLEDGEMENT FORM FOR CORPORATE SURETY

STATE OF TEXAS)
COUNTY OF DALLAS) ss.

On this 9TH day of JUNE, 1988, before me appeared LISA ROLLINS, to me personally known, who, being by me duly sworn, did say that he is ATTORNEY-IN-FACT of OLD REPUBLIC INSURANCE COMPANY and that the foregoing instrument was signed and sealed on behalf of said corporation by authority of its board of directors, and acknowledged said instrument to be the free act and deed of said corporation.

IN WITNESS WHEREOF, I have hereunto set my hand and seal on the day and year in this certificate first above written.

Notary Public

1-20-92 ANNIE TUTT

My Commission expires _____

(Note: Corporate surety attach power of attorney.)

APPROVED BY:

OIL CONSERVATION DIVISION OF NEW MEXICO

By

Date