

NMOCD Case No. 11996

July 28, 1998

**EXHIBITS RELATING TO SUBJECT FRUITLAND COAL WELL
PERFORMANCE AND AREA FRUITLAND COAL WELL
PERFORMANCE**

(3 PAGES)

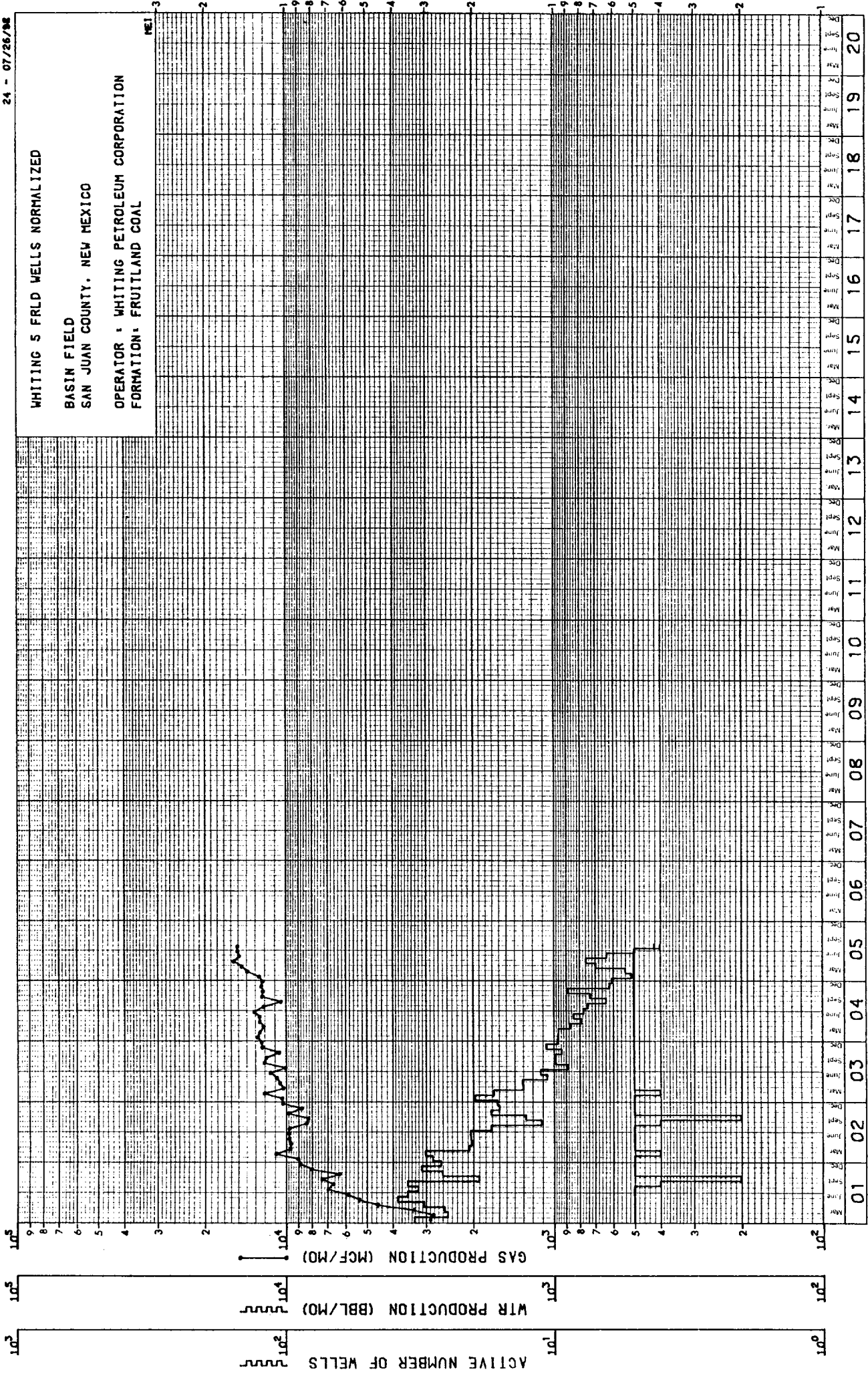
NMOCD CASE #11996
PENDRAGON ENERGY
EXHIBIT

M-10

WHITING 5 FRLD WELLS NORMALIZED

BASIN FIELD
SAN JUAN COUNTY, NEW MEXICO

OPERATOR : WHITING PETROLEUM CORPORATION
FORMATION: FRUITLAND COAL

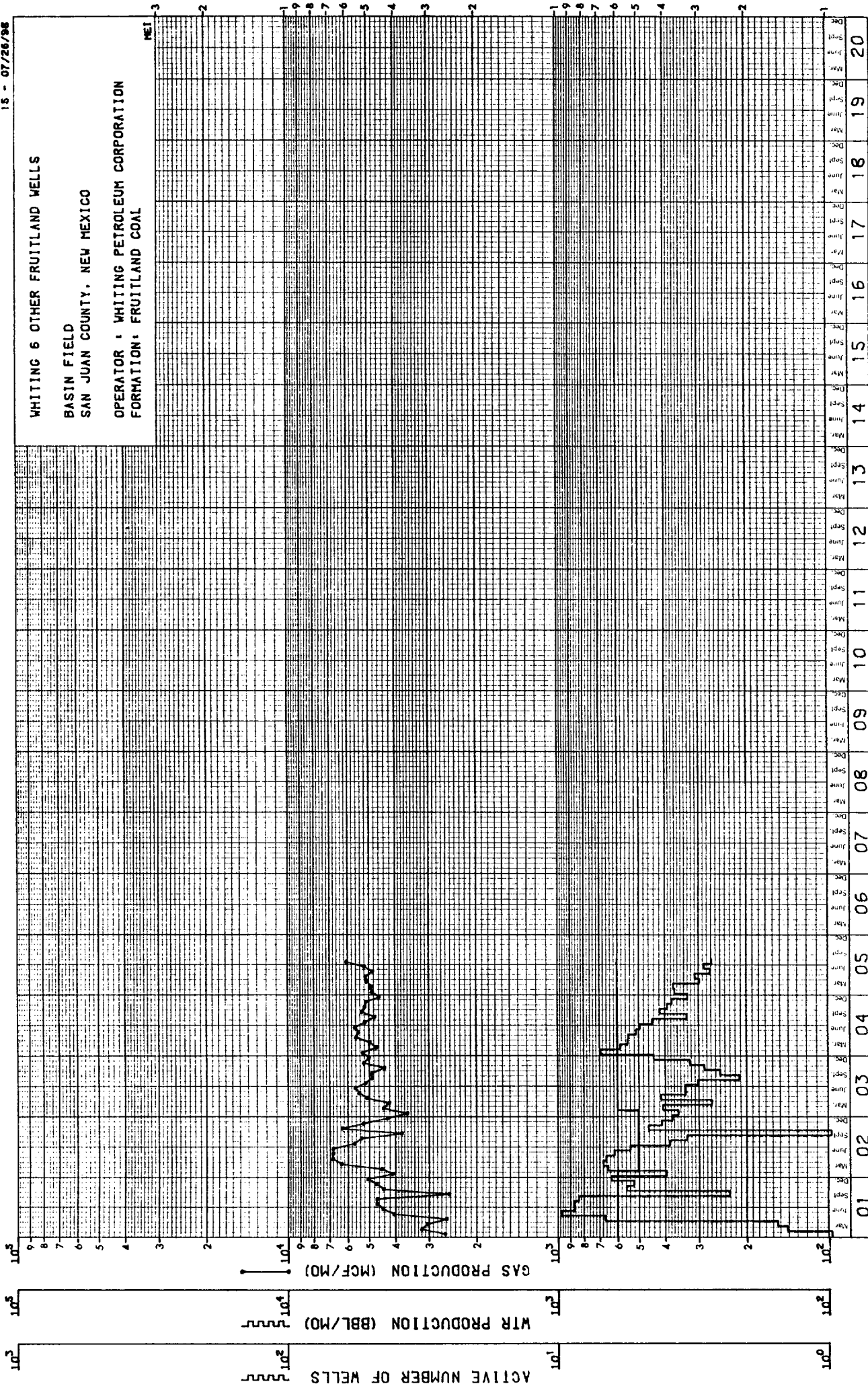


WHITING 6 OTHER FRUITLAND WELLS

BASIN FIELD

SAN JUAN COUNTY, NEW MEXICO

OPERATOR : WHITING PETROLEUM CORPORATION
FORMATION: FRUITLAND COAL



AVERAGE AREA FRUITLAND COAL PRODUCTION

BASIN FIELD
SAN JUAN COUNTY, NEW MEXICO

OPERATOR : VARIOUS
FORMATION : FRUITLAND COAL

